

OPERATOR: **Extraction Oil & Gas**

WELL NAME: **Jesser 3E-10-15N**

FIELD NAME: DJ Basin - Wattenberg

DRILLING RIG: Patterson 901

API #: 05-123-45669

LAT/LONG: 40.341708, -104.996923

SURFACE HOLE: NWSW S3-T4N-R68W, 2314' FSL, 636' FWL

BOTTOM HOLE: S3-T4N-R68W, 660' FSL, 460' FEL

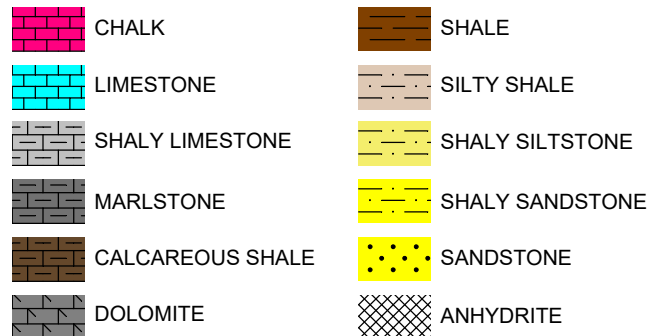


Earth Science Agency, LLC

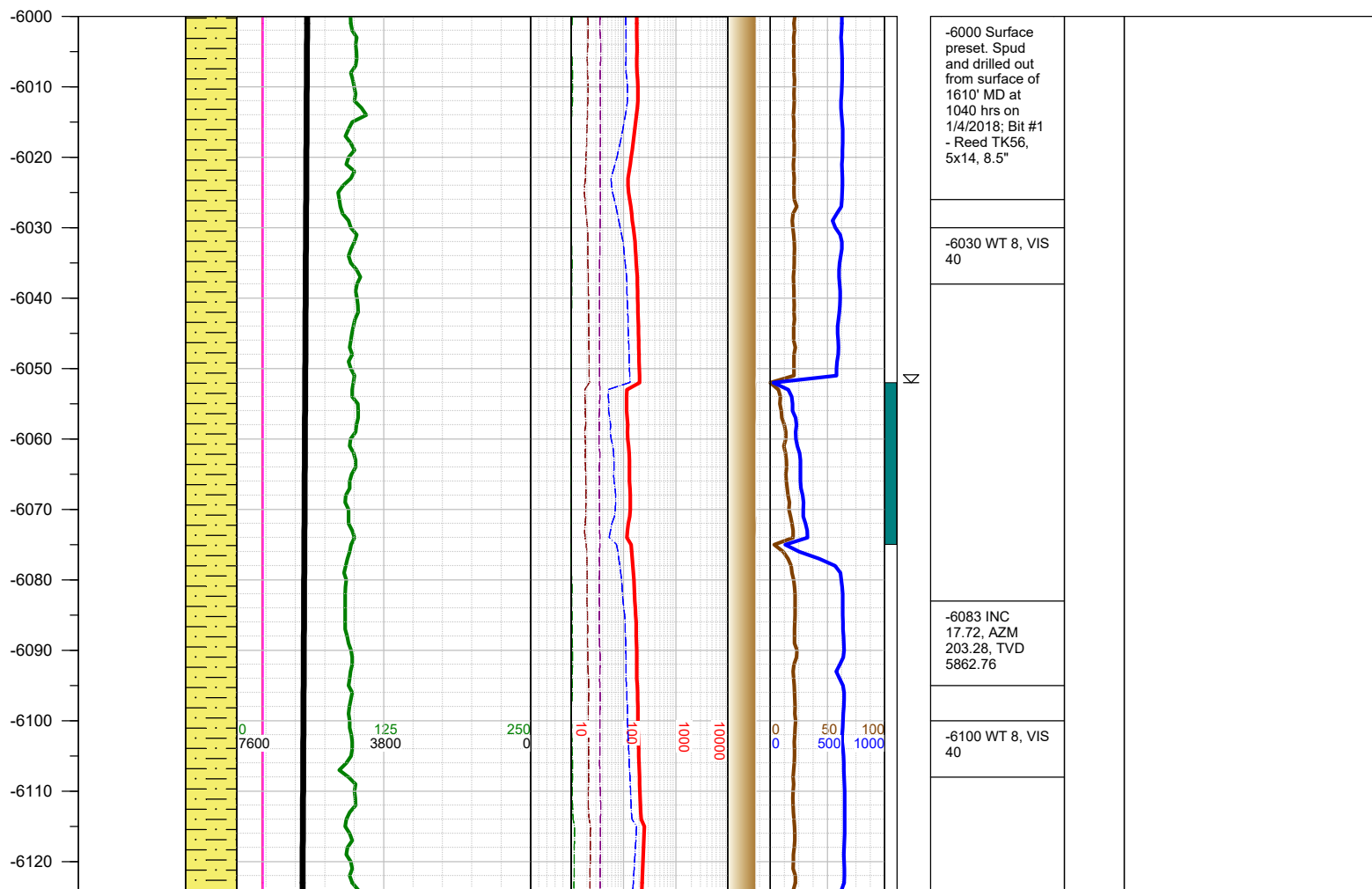
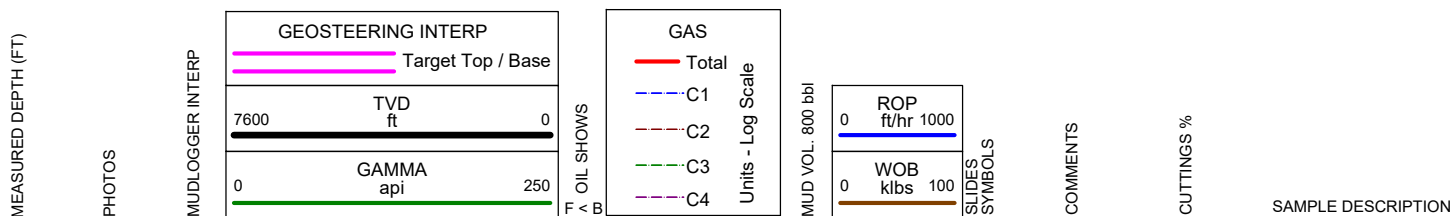
COUNTY: Weld
STATE: Colorado
GROUND ELEVATION: 5115'
KELLY BUSHING: 5144'
DRILLING FLUID: OBM
TVD VS. MD: 6965' / 11900'
SPUD DATE: January 4, 2018
TD DATE: January 6, 2018

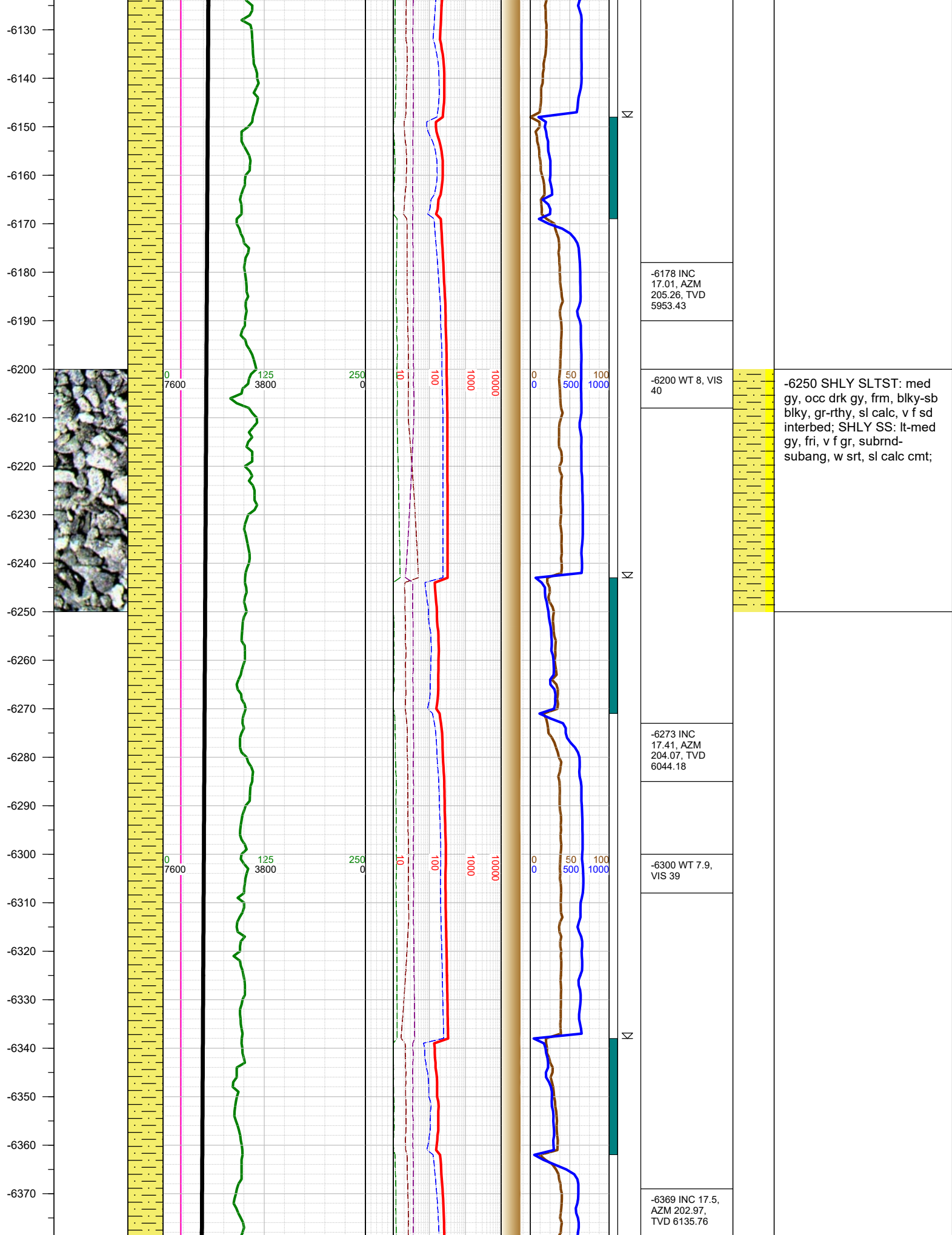
DEPTHS LOGGED: 6000' - 11900'
DATES LOGGED: January 4, 2018 - January 6, 2018
GEOLOGISTS: Blake Eatherton, Dominic Pitre
SCALE: 5" = 100'

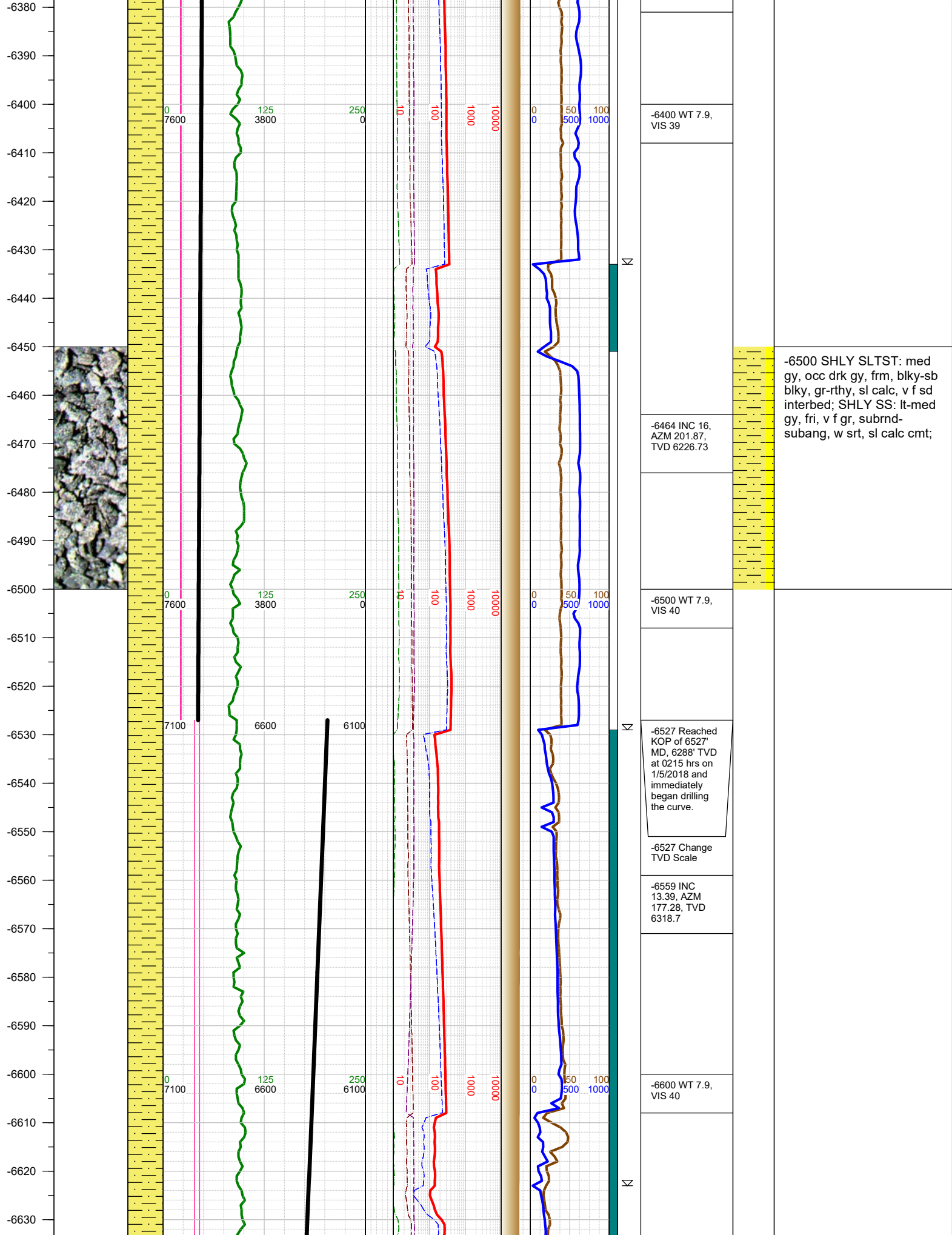
LEGEND

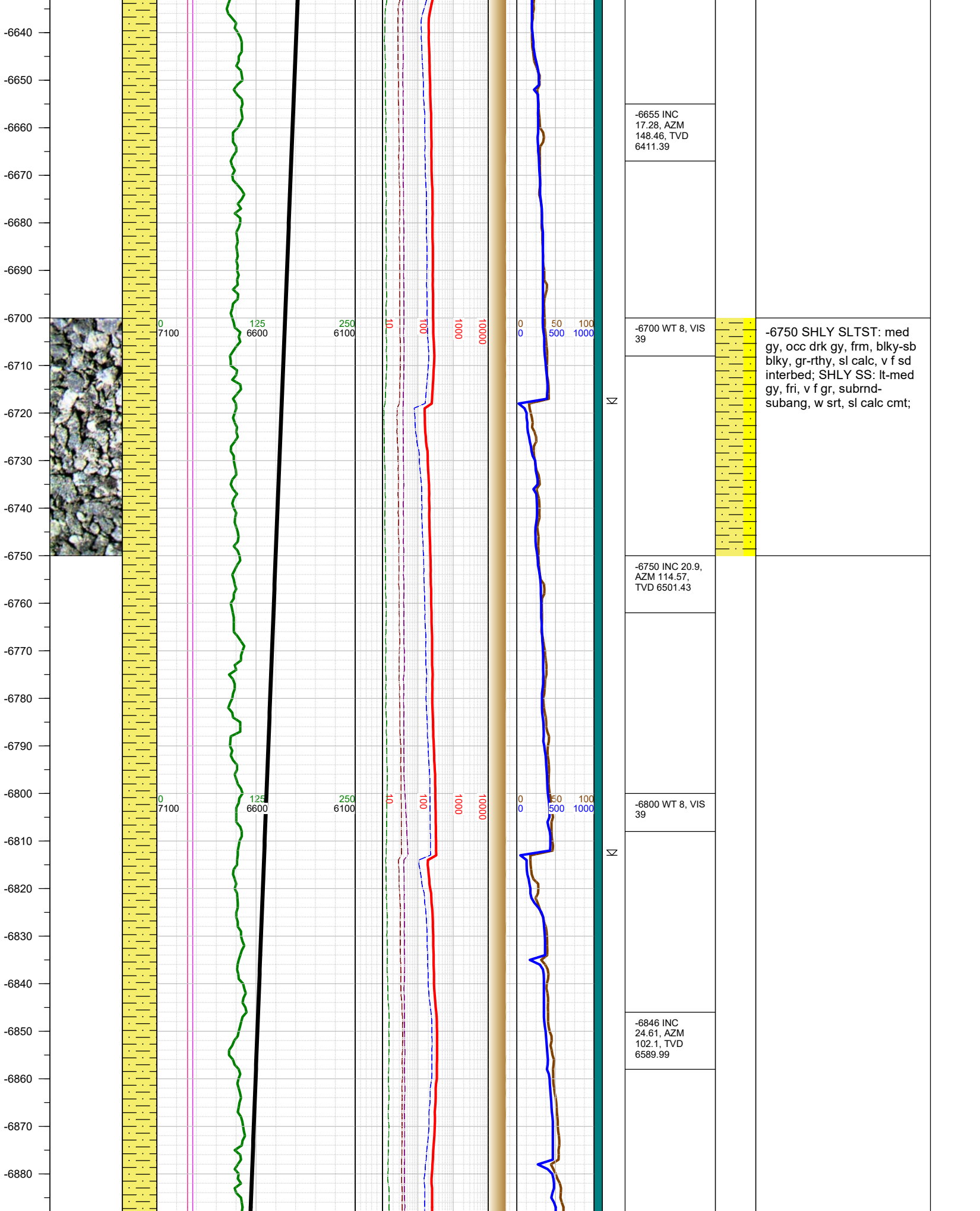


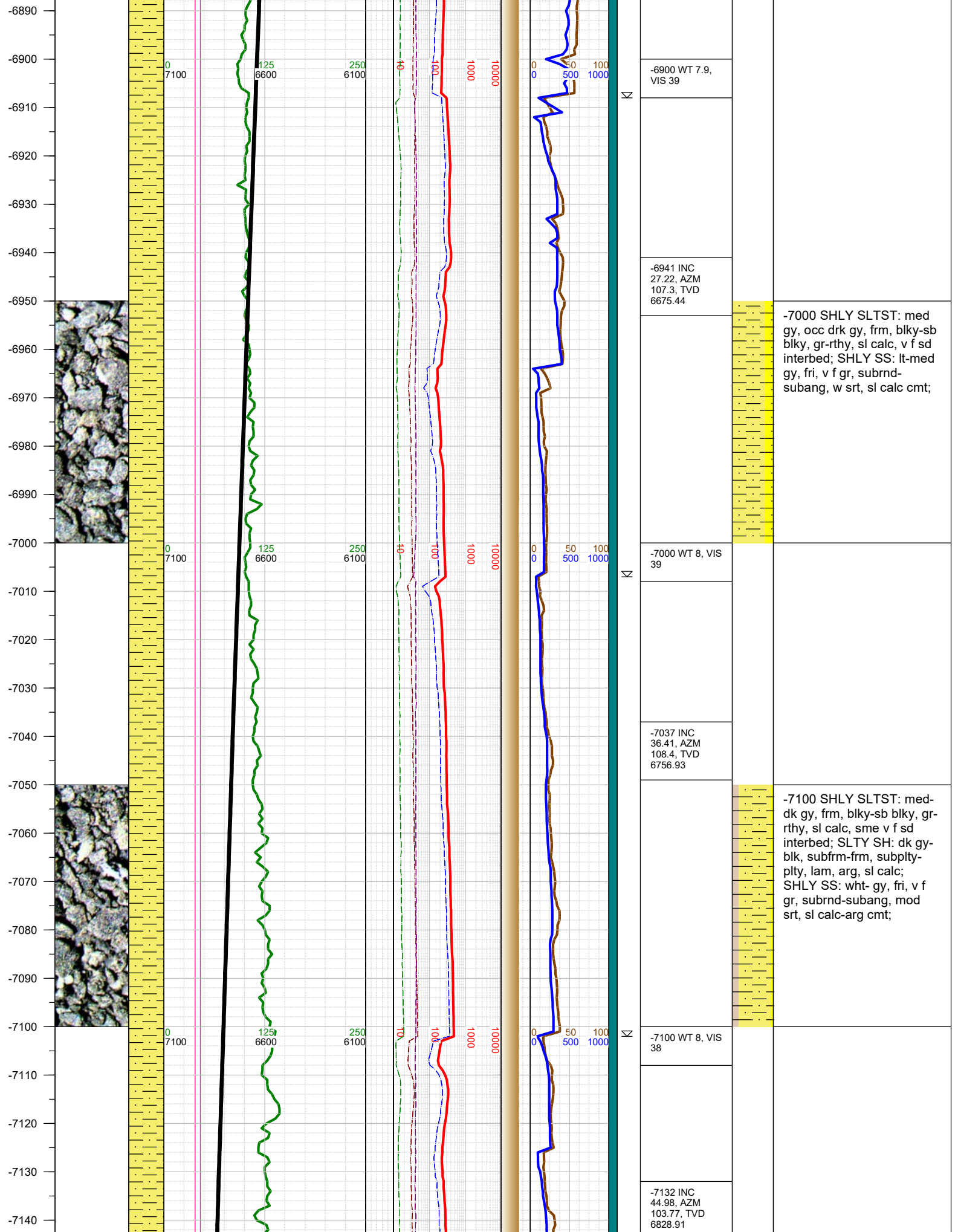
FORMATION CONNECTION MIDNIGHT NEW BIT GAS SHOW FAULT

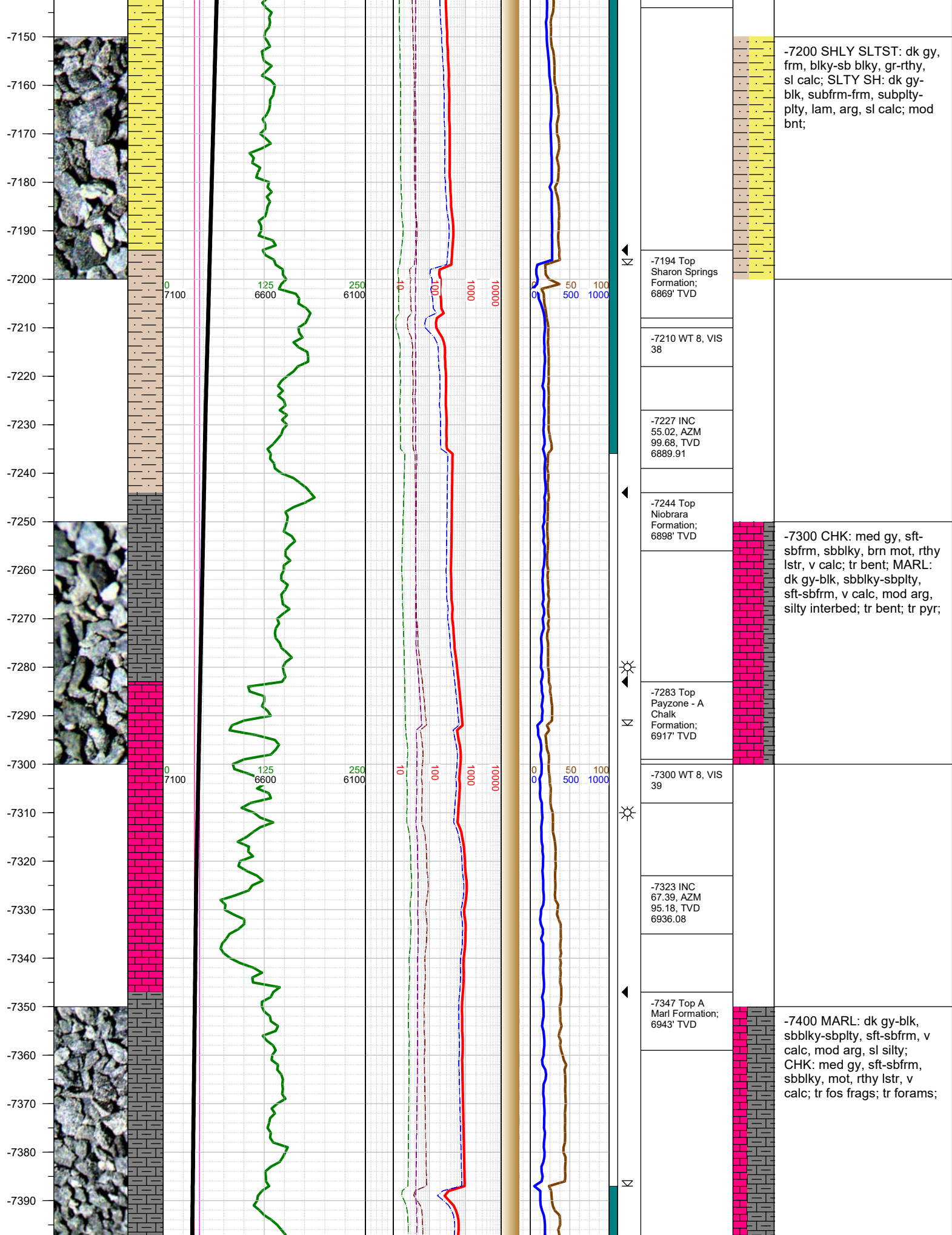


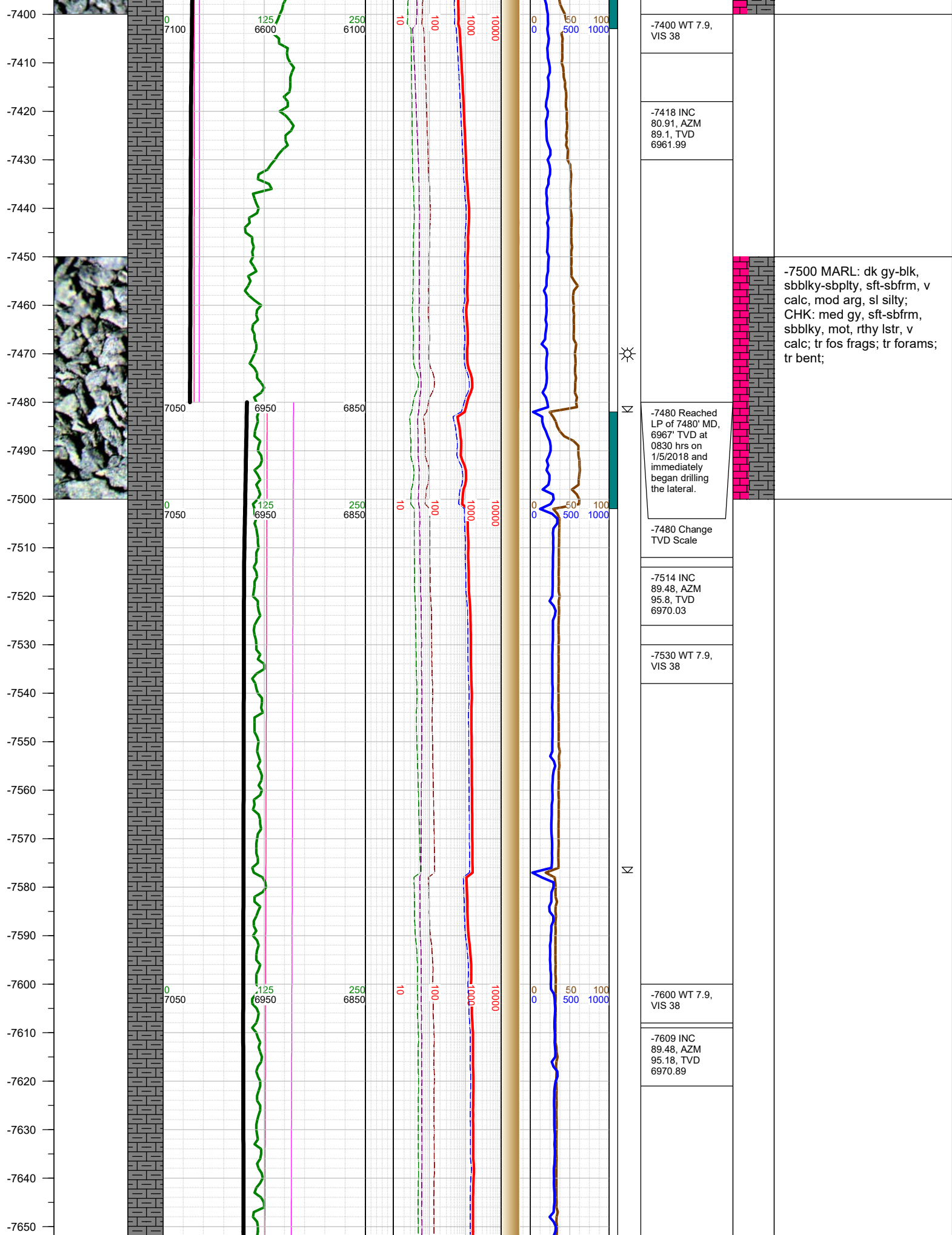


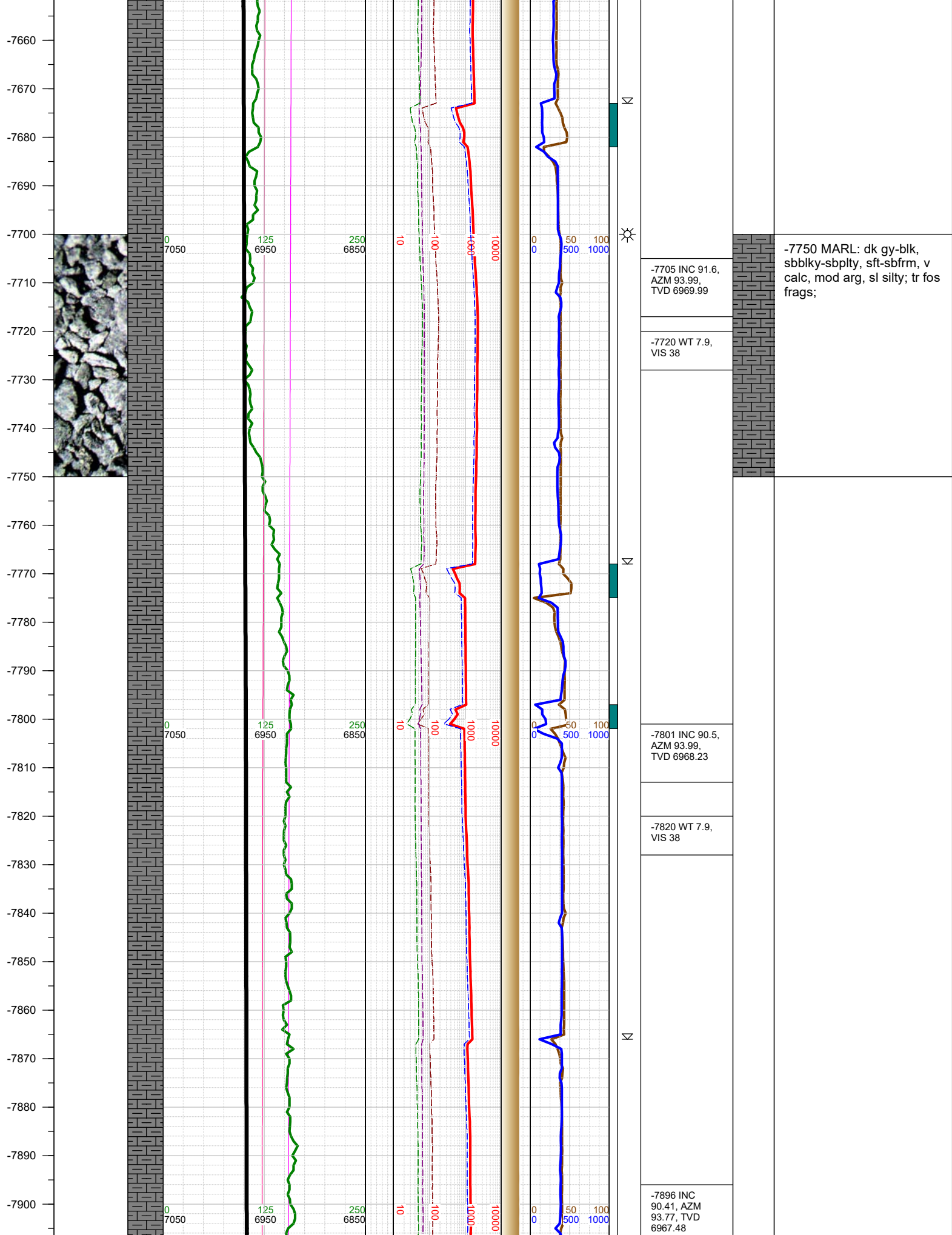




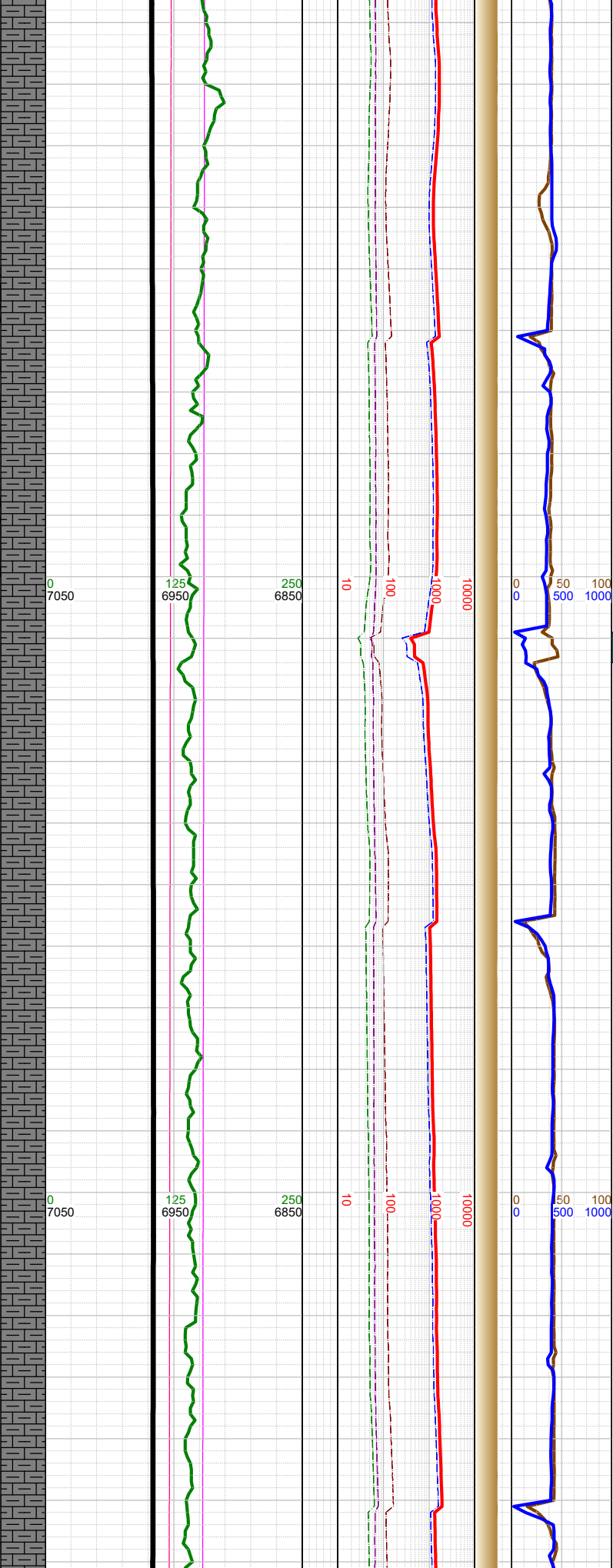




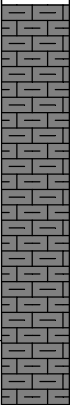




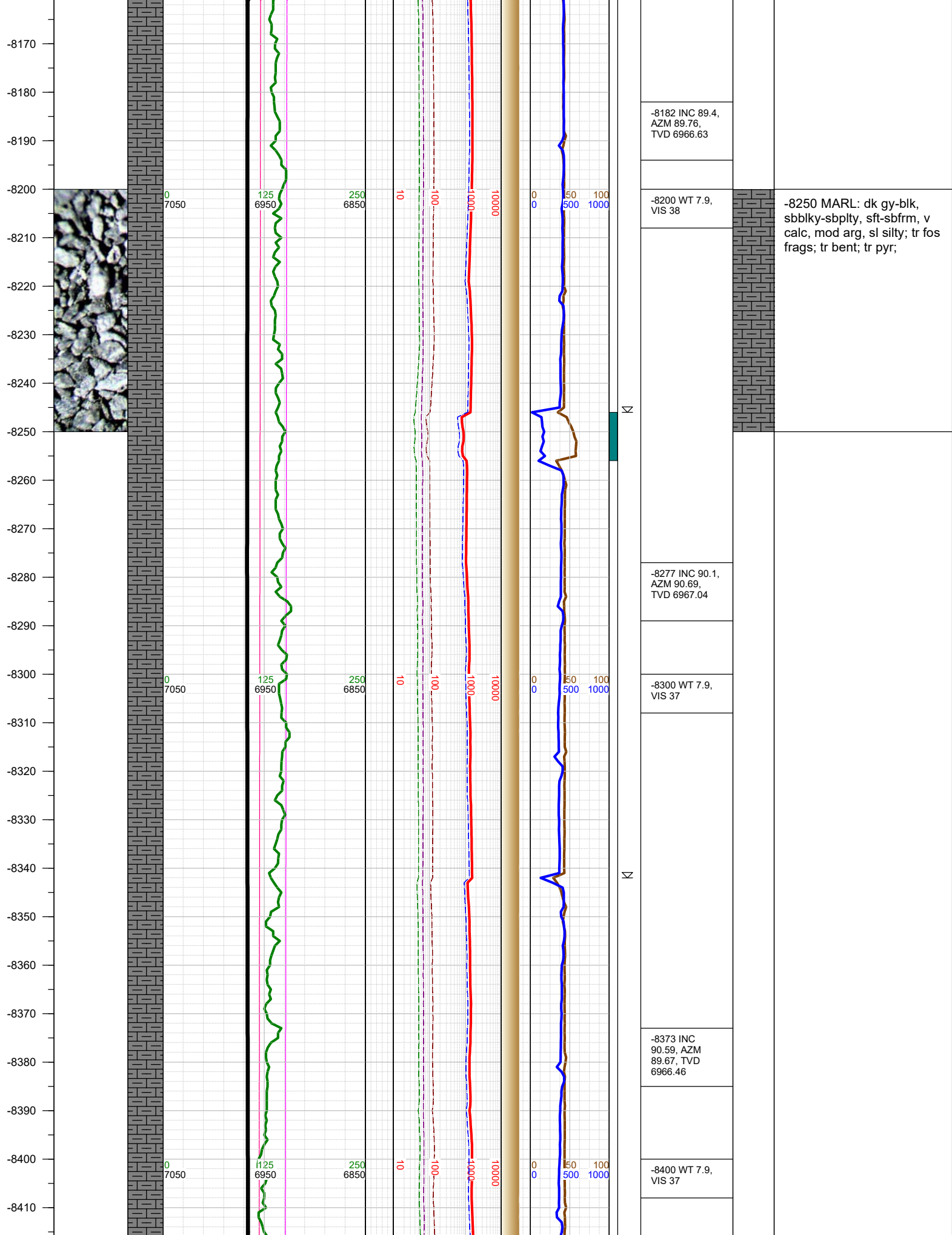
-7910
-7920
-7930
-7940
-7950
-7960
-7970
-7980
-7990
-8000
-8010
-8020
-8030
-8040
-8050
-8060
-8070
-8080
-8090
-8100
-8110
-8120
-8130
-8140
-8150
-8160



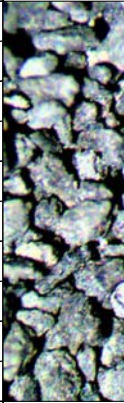
-7910 WT 7.9, VIS 38
-7992 INC 90.9, AZM 93.07, TVD 6966.38
-8010 WT 7.9, VIS 38
-8087 INC 89.7, AZM 91.7, TVD 6965.88
-8100 WT 7.9, VIS 38



-8000 MARL: dk gy-blk, sbblky-sbplty, sft-sbfrm, v calc, mod arg, sl silty; tr fos frags;



-8420
-8430
-8440
-8450
-8460
-8470
-8480
-8490
-8500
-8510
-8520
-8530
-8540
-8550
-8560
-8570
-8580
-8590
-8600
-8610
-8620
-8630
-8640
-8650
-8660
-8670



0
7050

125
6950

250
6850

10

100

1000

10000

0
0

50
500

100
1000



-8468 INC
90.28, AZM
89.19, TVD
6965.74

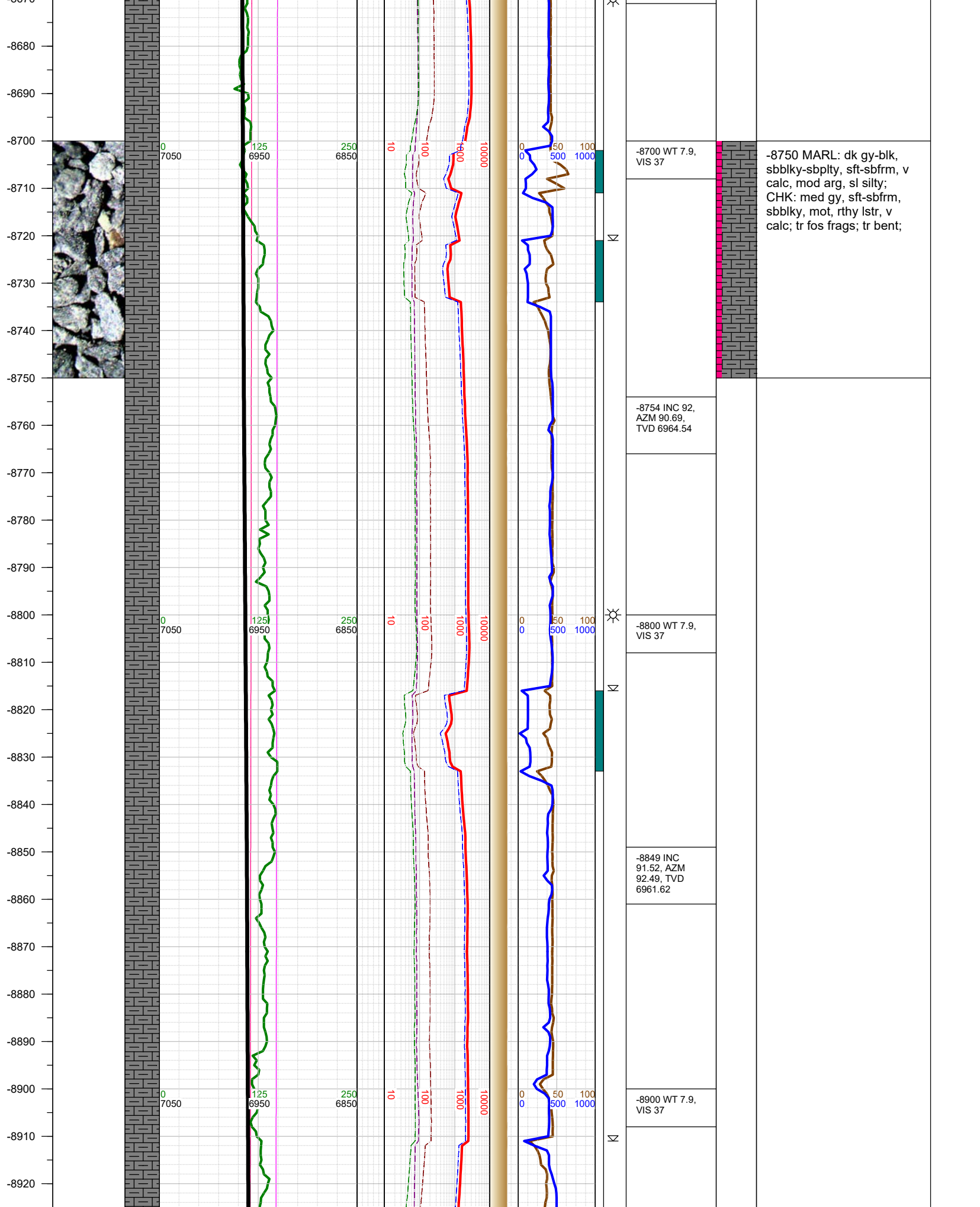
-8500 WT 7.9,
VIS 37

-8563 INC
89.31, AZM
87.6, TVD
6966.08

-8600 WT 7.9,
VIS 38

-8659 INC
90.28, AZM
88.39, TVD
6966.43

-8500 MARL: dk gy-blk,
sbbly-sbply, sft-sbfrm, v
calc, mod arg, sl silty; tr fos
frags; tr bent; tr pyr;



-8750 MARL: dk gy-blk, sbblky-sbplty, sft-sbfrm, v calc, mod arg, sl silty; CHK: med gy, sft-sbfrm, sbblky, mot, rthy lstr, v calc; tr fos frags; tr bent;

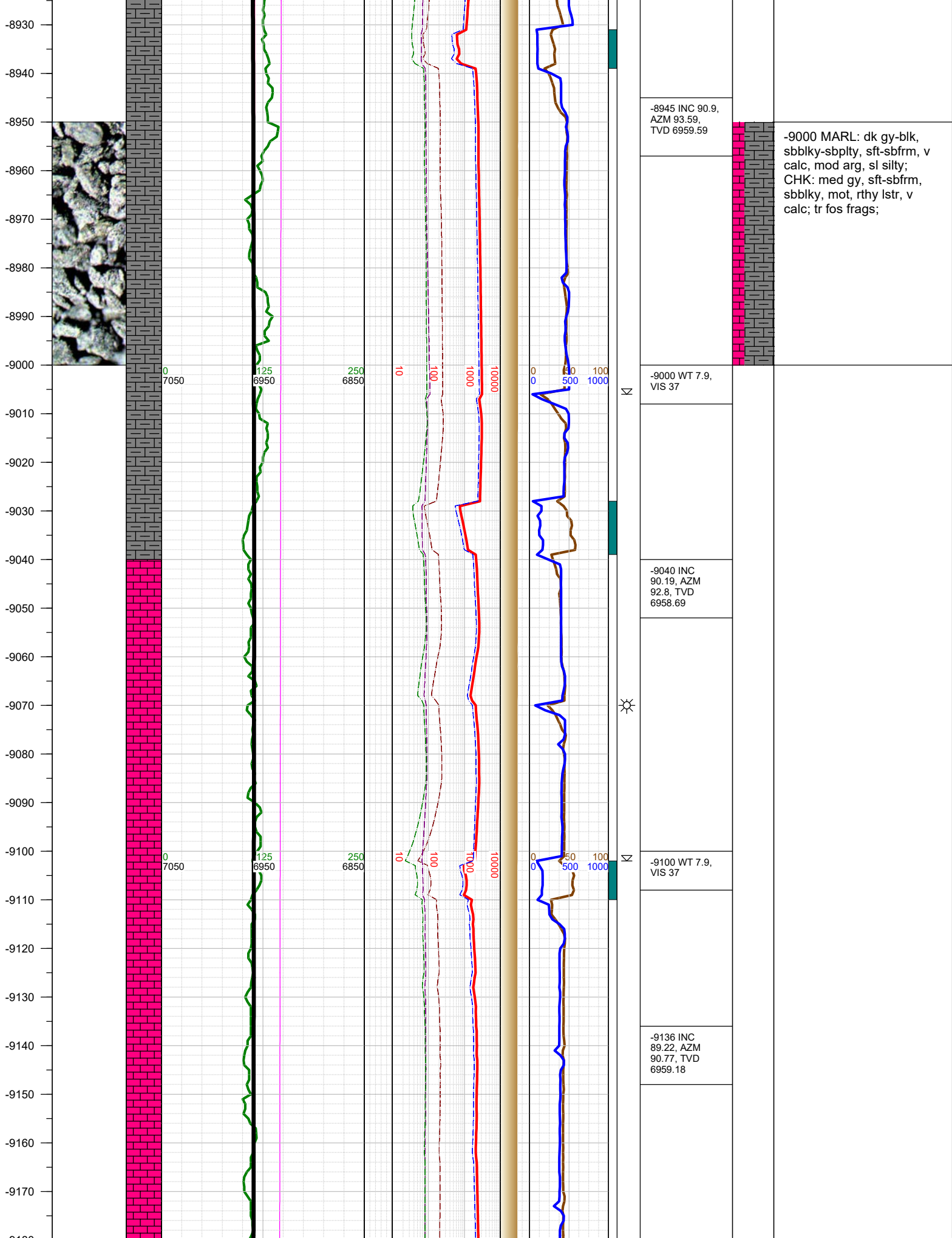
-8700 WT 7.9, VIS 37

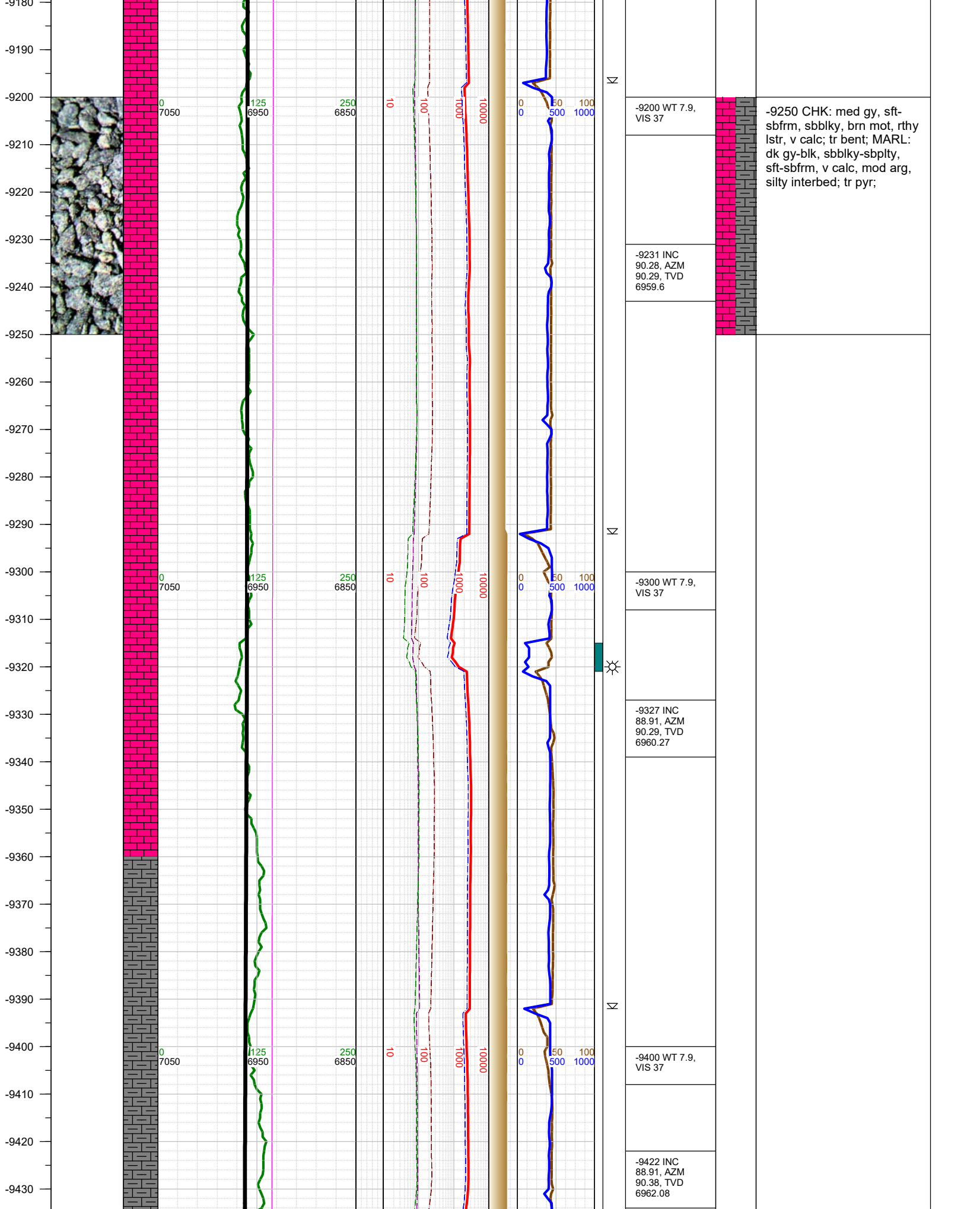
-8754 INC 92, AZM 90.69, TVD 6964.54

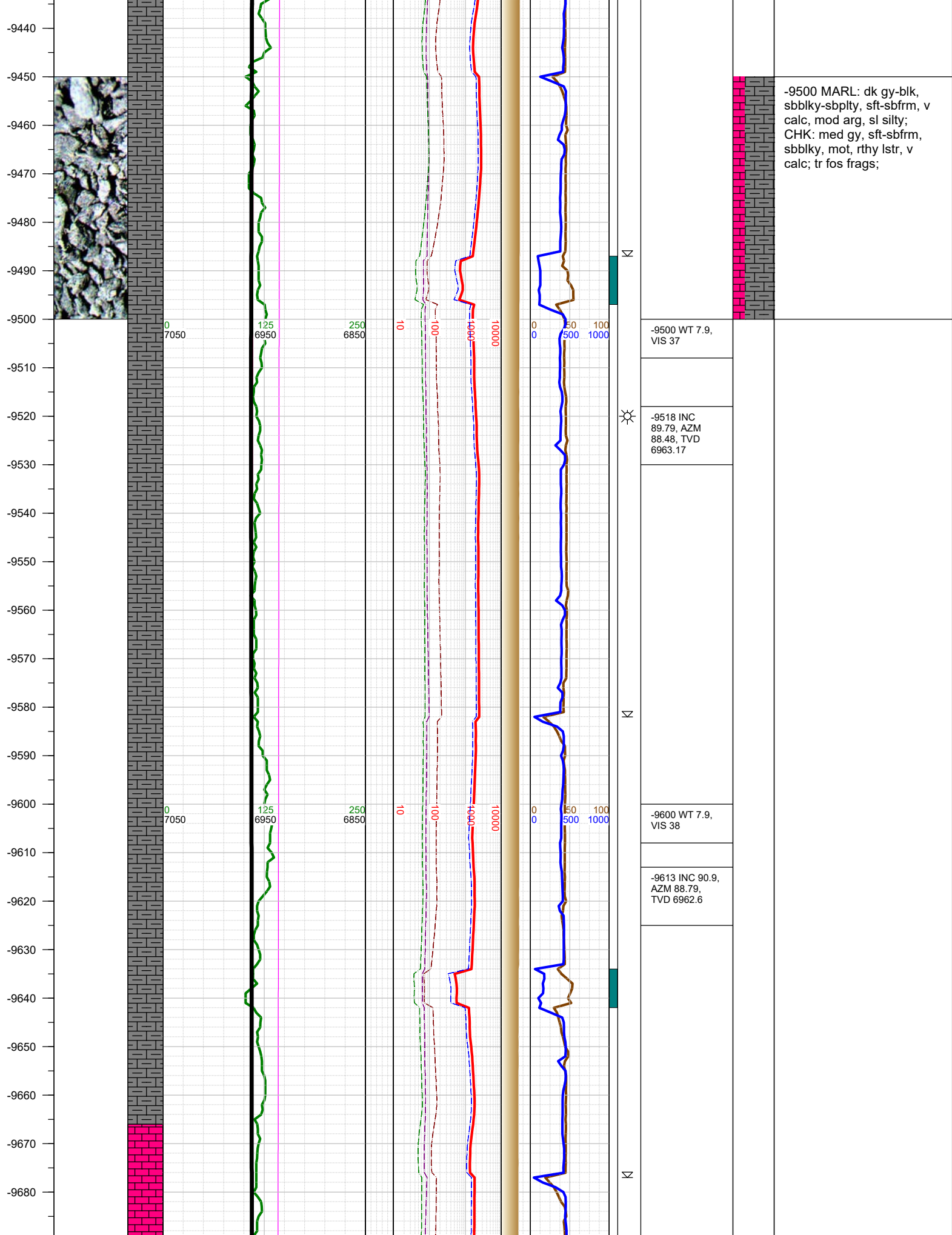
-8800 WT 7.9, VIS 37

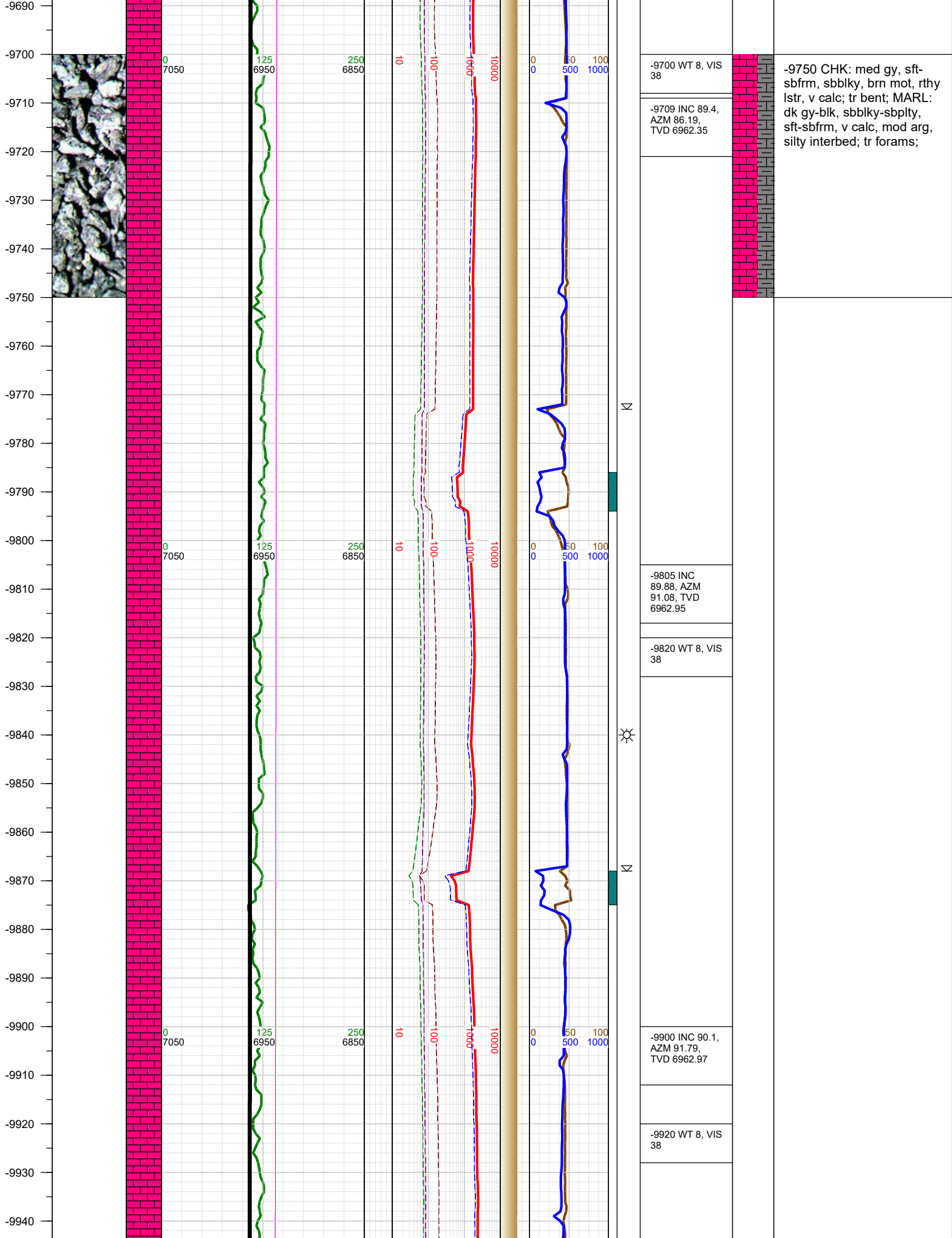
-8849 INC 91.52, AZM 92.49, TVD 6961.62

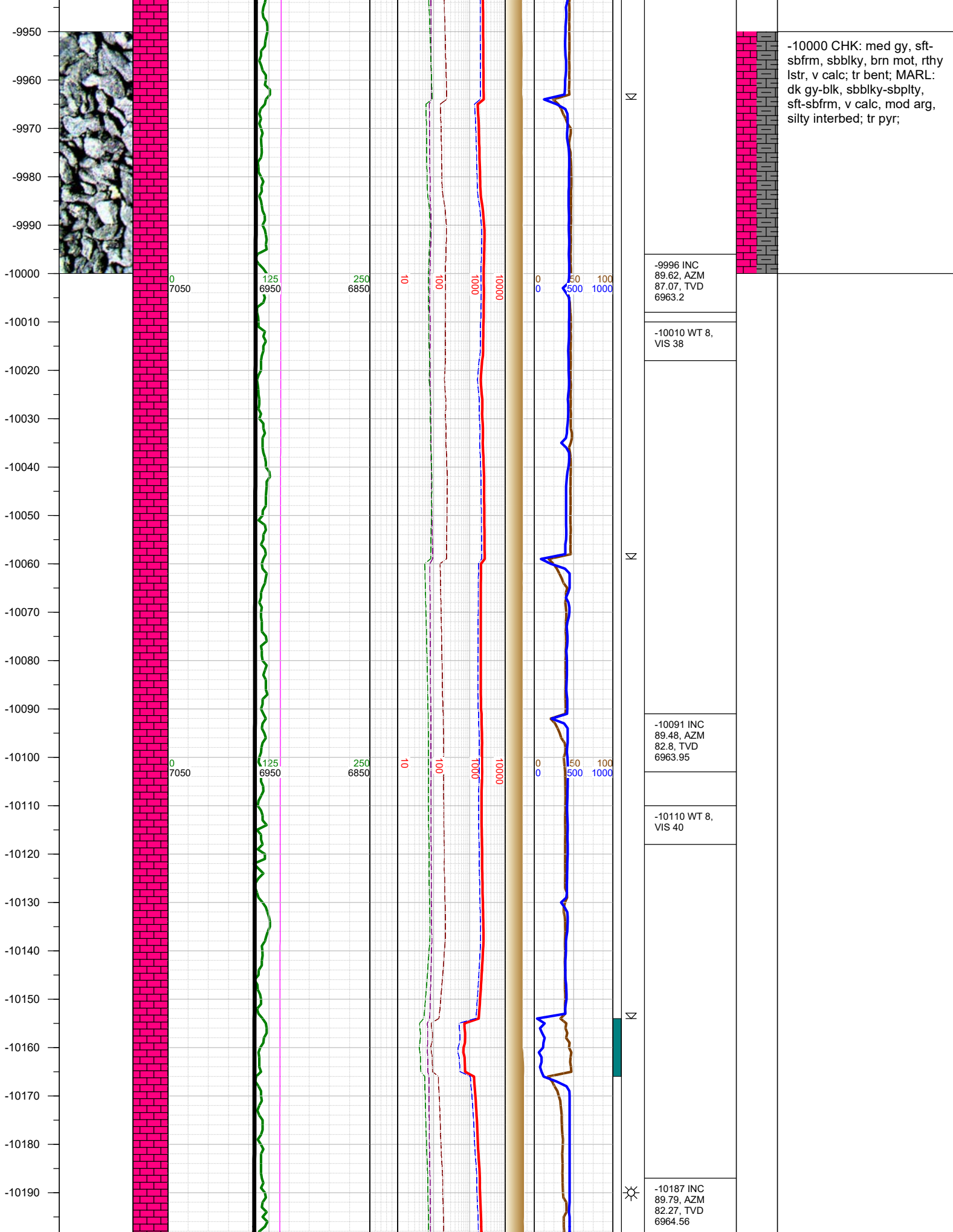
-8900 WT 7.9, VIS 37











-10000 CHK: med gy, sft-sbfrm, sbblky, brn mot, rthy lstr, v calc; tr bent; MARL: dk gy-blk, sbblky-sbplty, sft-sbfrm, v calc, mod arg, silty interbed; tr pyr;

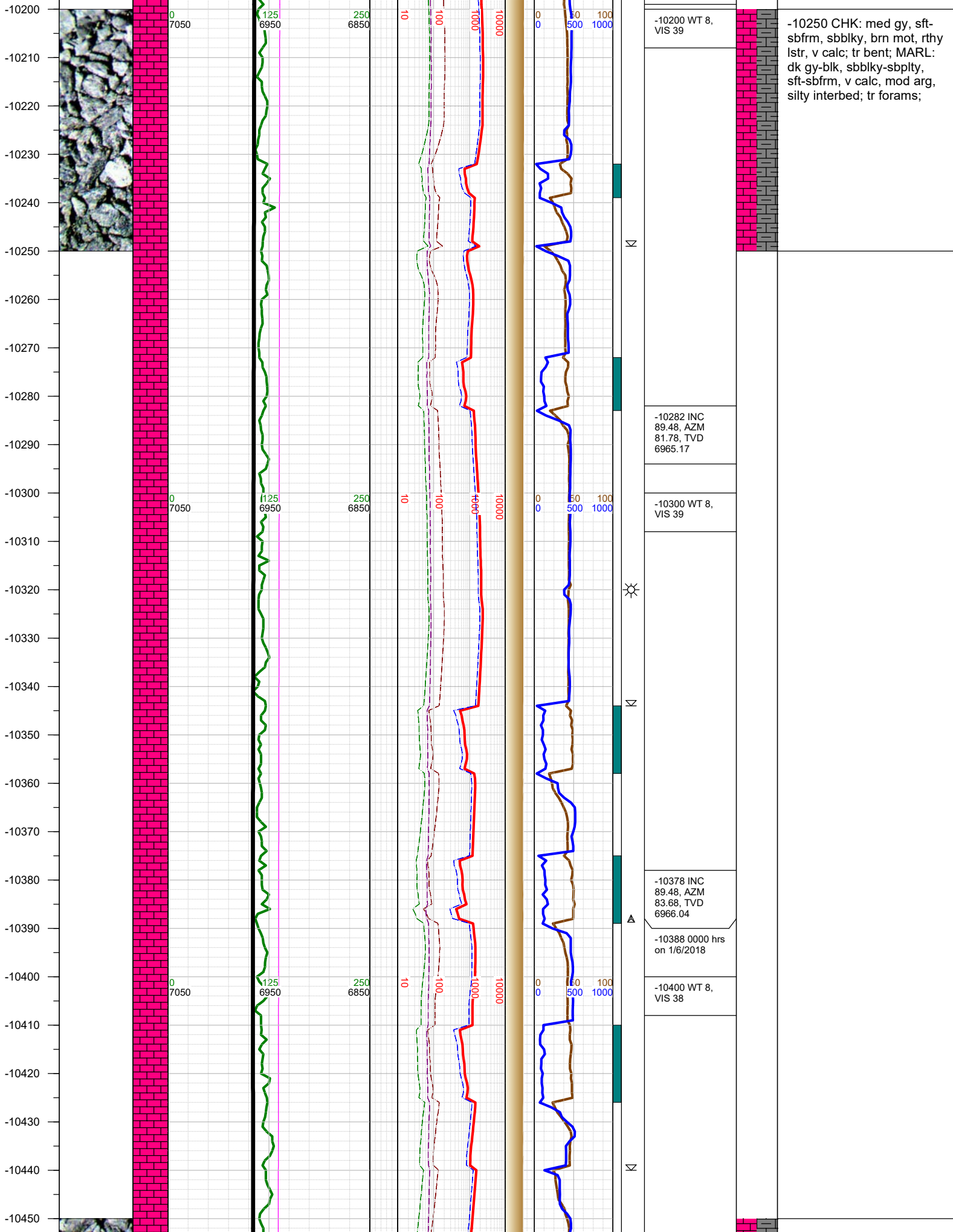
-9996 INC
89.62, AZM
87.07, TVD
6963.2

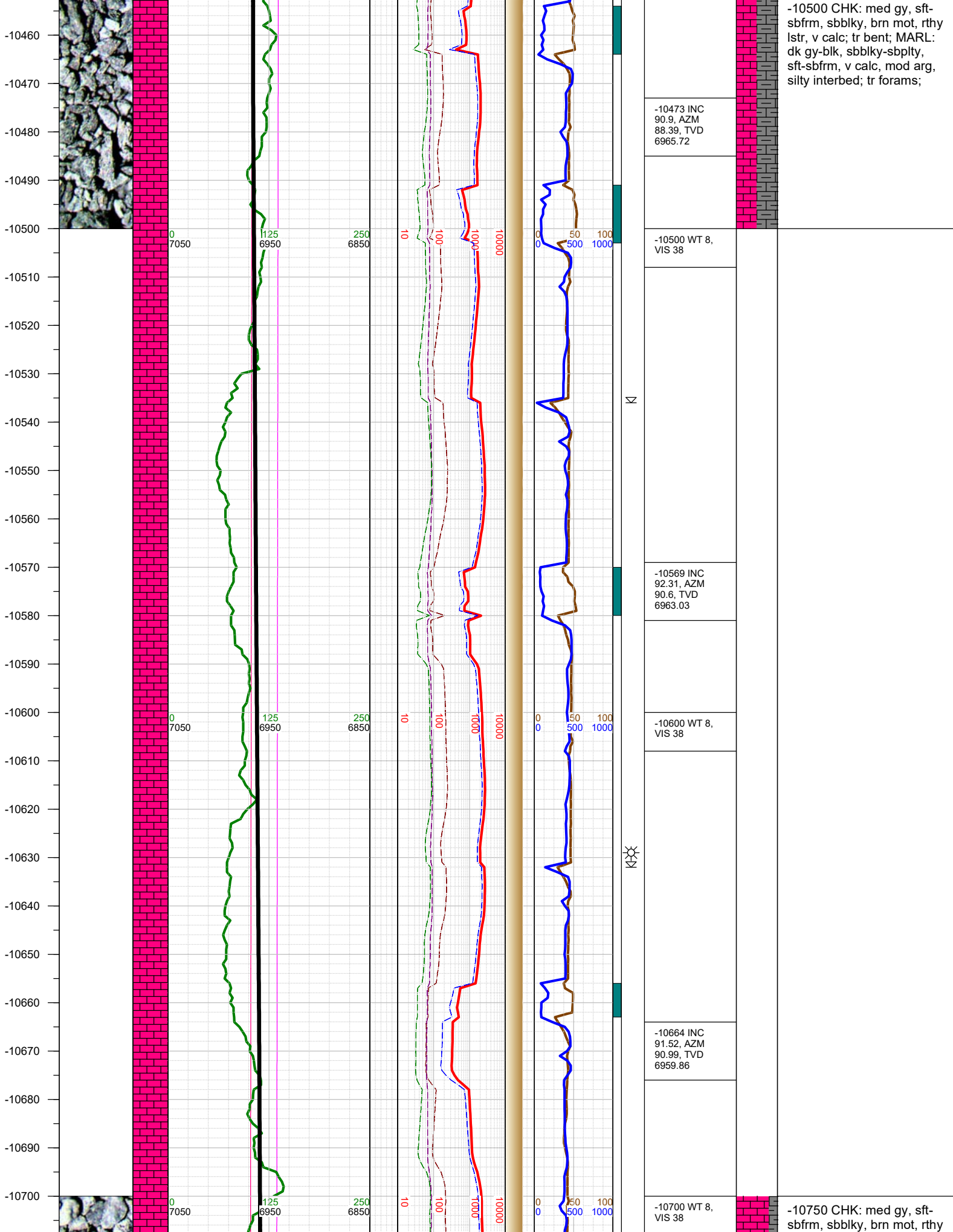
-10010 WT 8,
VIS 38

-10091 INC
89.48, AZM
82.8, TVD
6963.95

-10110 WT 8,
VIS 40

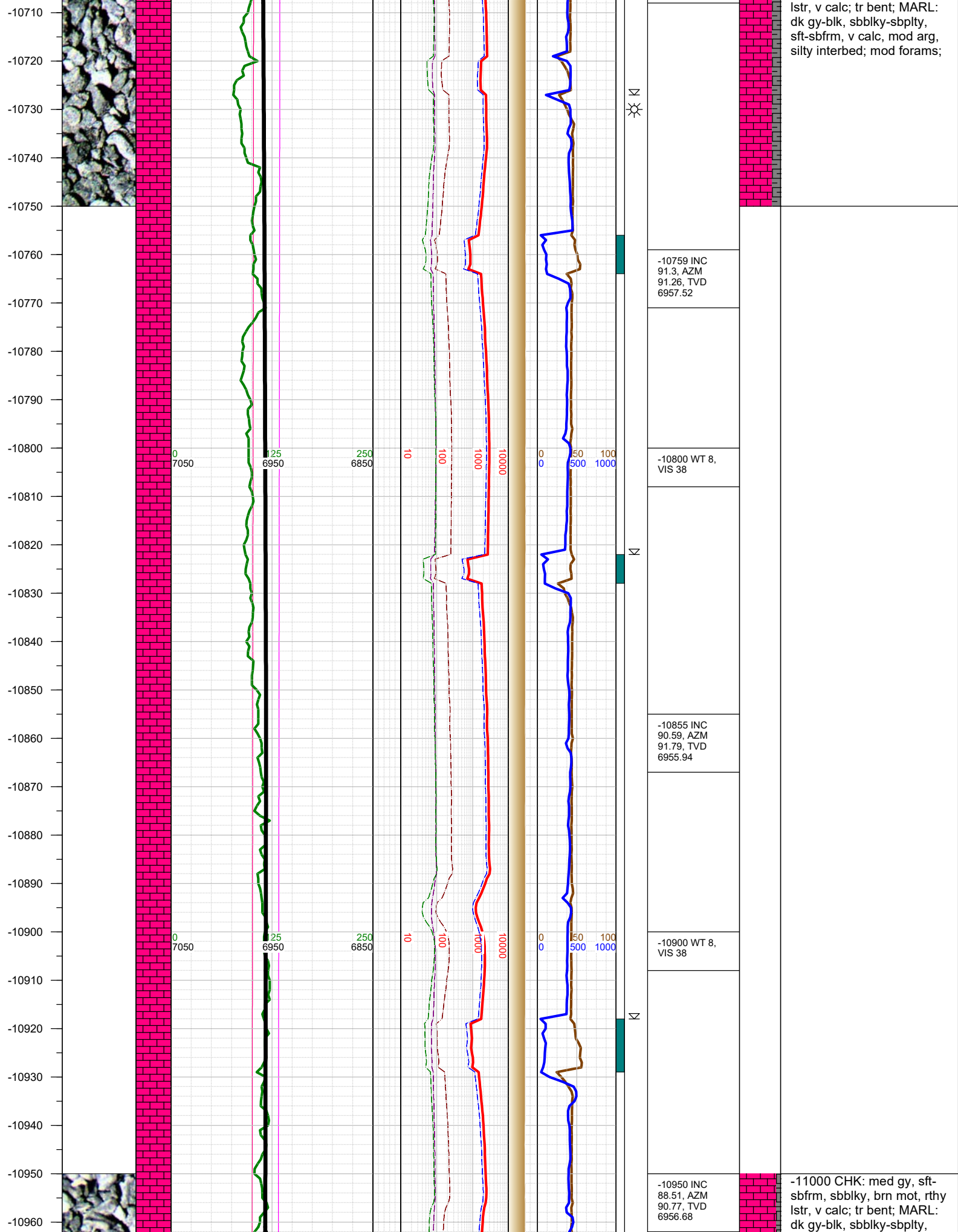
-10187 INC
89.79, AZM
82.27, TVD
6964.56

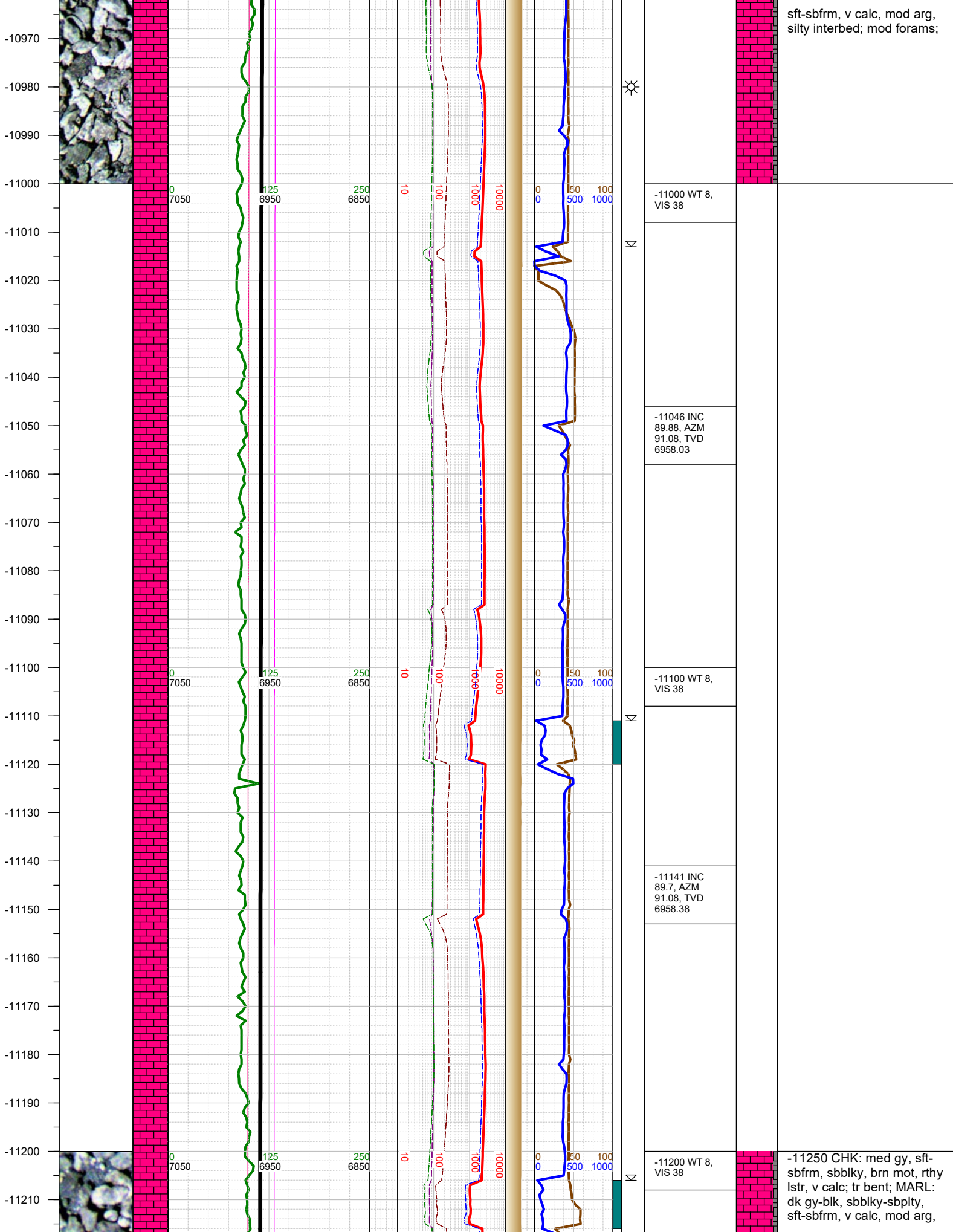




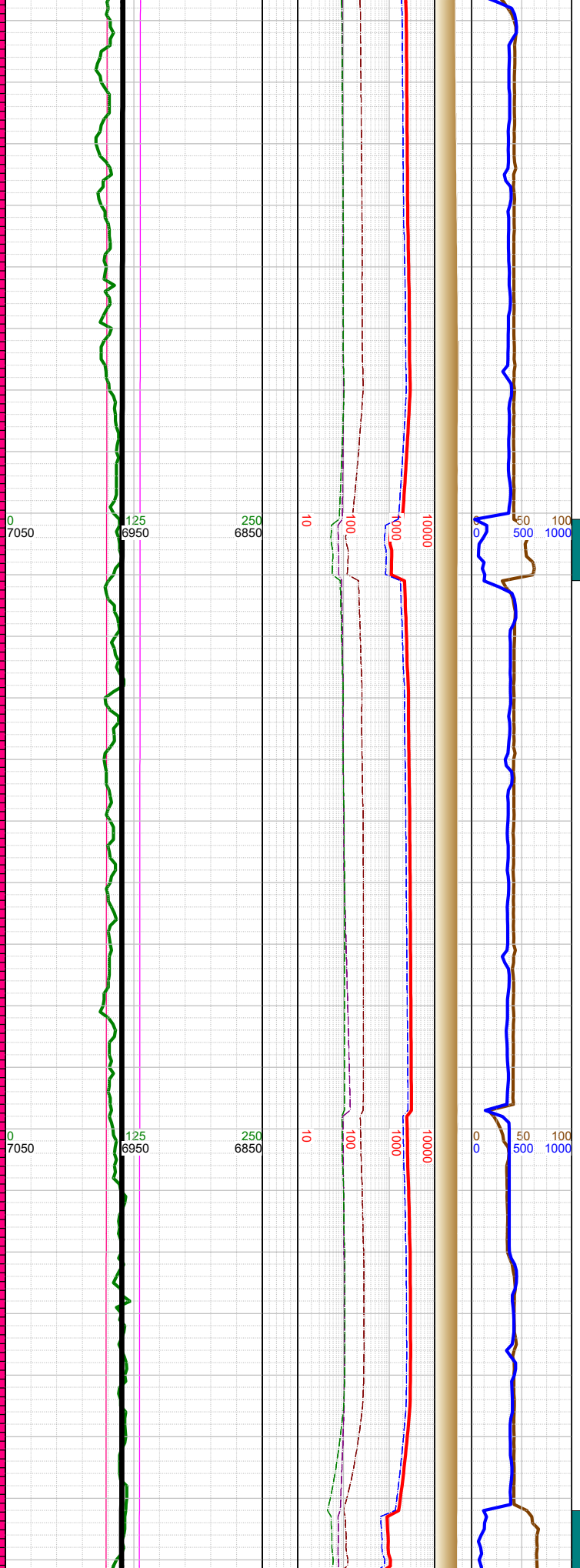
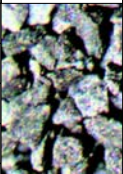
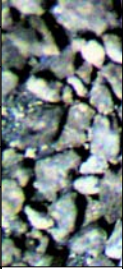
-10500 CHK: med gy, sft-sbfrm, sbblky, brn mot, rthy lstr, v calc; tr bent; MARL: dk gy-blk, sbblky-sbply, sft-sbfrm, v calc, mod arg, silty interbed; tr forams;

-10750 CHK: med gy, sft-sbfrm, sbblky, brn mot, rthy





-11220
-11230
-11240
-11250
-11260
-11270
-11280
-11290
-11300
-11310
-11320
-11330
-11340
-11350
-11360
-11370
-11380
-11390
-11400
-11410
-11420
-11430
-11440
-11450
-11460
-11470



☀
☀

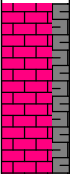
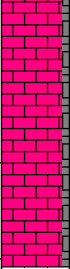
-11237 INC
89.79, AZM
90.2, TVD
6958.81

-11300 WT 8,
VIS 38

-11332 INC
89.31, AZM
90.07, TVD
6959.55

-11400 WT 8,
VIS 38

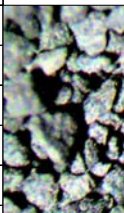
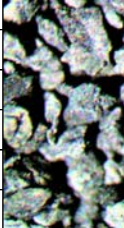
-11427 INC
90.9, AZM
90.07, TVD
6959.38



silty interbed; mod forams;

-11500 CHK: med gy, sft-sbfrm, sbblky, brn mot, rthy lstr, v calc; MARL: dk gy-blk, sbblky-sbplty, sft-sbfrm, v calc, mod arg, silty interbed;

-11480
-11490
-11500
-11510
-11520
-11530
-11540
-11550
-11560
-11570
-11580
-11590
-11600
-11610
-11620
-11630
-11640
-11650
-11660
-11670
-11680
-11690
-11700
-11710
-11720



0
7050

125
6950

250
6850

10

100

1000

10000

0
0

50

100

W

W

W

-11500 WT 8,
VIS 39

-11523 INC
88.51, AZM
88.17, TVD
6959.87

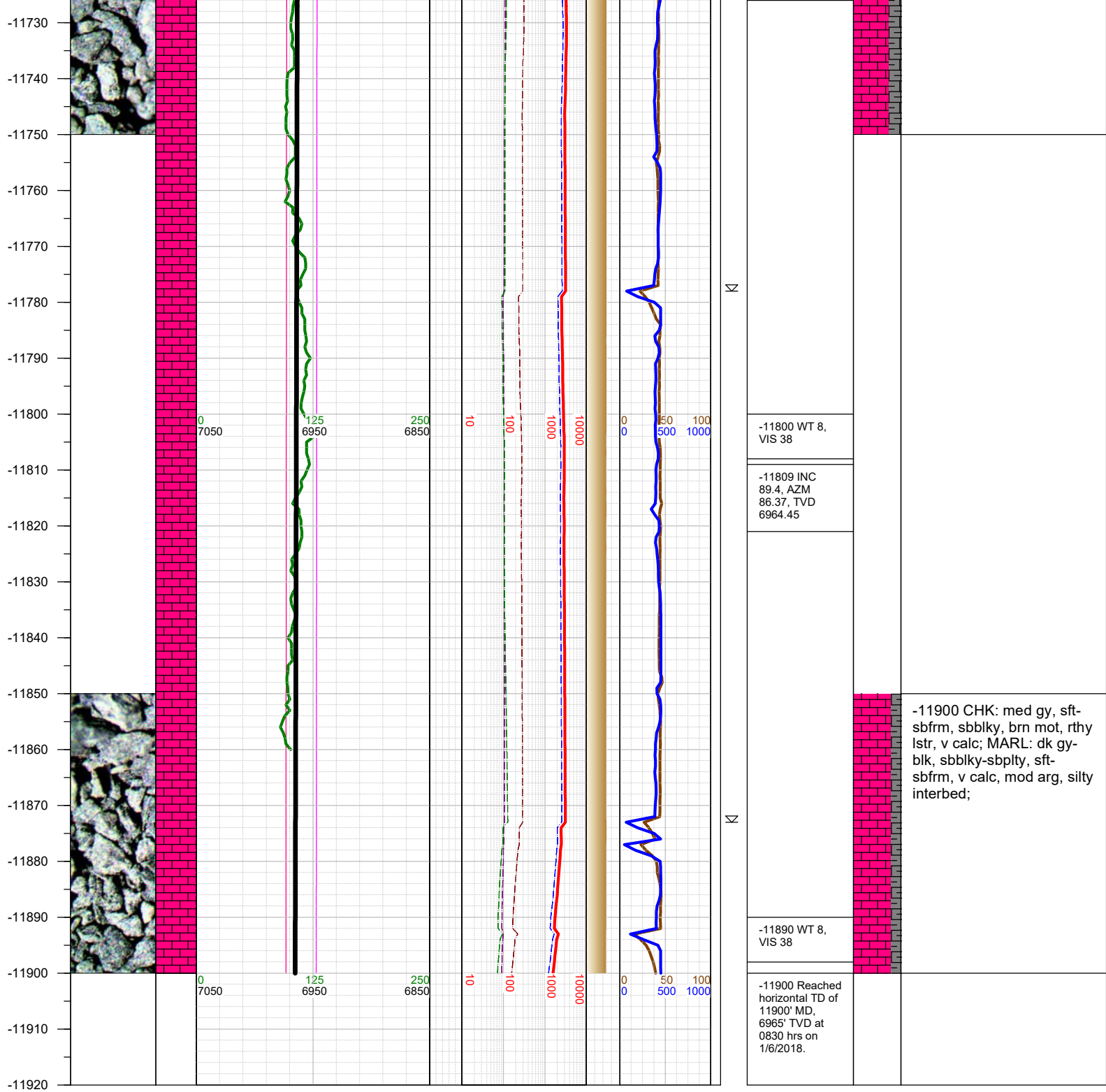
-11600 WT 8,
VIS 39

-11619 INC
88.82, AZM
87.87, TVD
6962.11

-11700 WT 8,
VIS 39

-11714 INC
89.48, AZM
87.47, TVD
6963.52

-11750 CHK: med gy, sft-
sbfrm, sbbkly, brn mot, rthy
lstr, v calc; MARL: dk gy-
blk, sbbkly-sbplty, sft-
sbfrm, v calc, mod arg, silty
interbed;



TOTAL DEPTH = 11900'

Thank you for using Earth Science Agency