



EXTRACTION OIL & GAS
Project: WELD COUNTY, COLORADO (NAD 83)
Site: Sec 3, T4N-R68W 6th PM (KB 29' CORRECT 111917)
Well: Jessor 3E 10-14C
Wellbore: Wellbore #1
Plan: Plan #2 (Jessor 3E 10-14C/Wellbore #1)

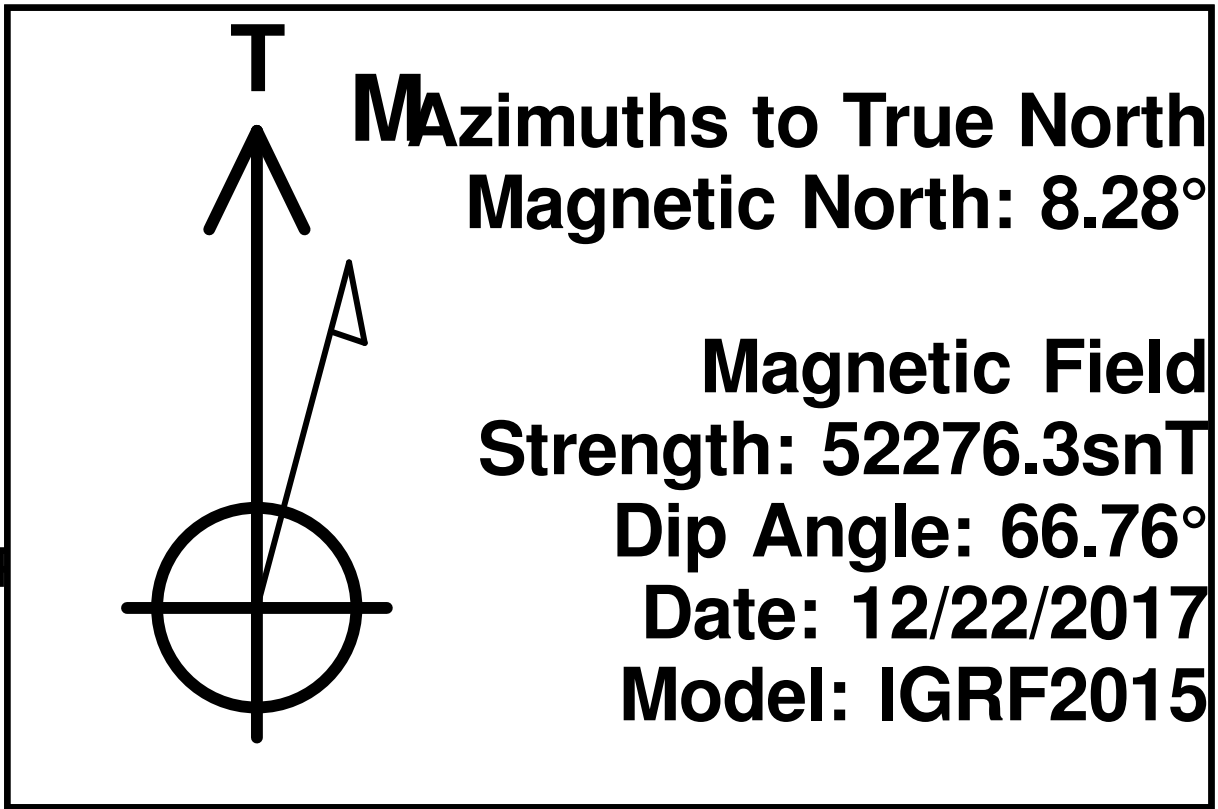
WELL DETAILS: Jessor 3E 10-14C

Ground Elevation:: 5110.0
RKB Elevation: KB=29 @ 5139.0usft
Rig Name:

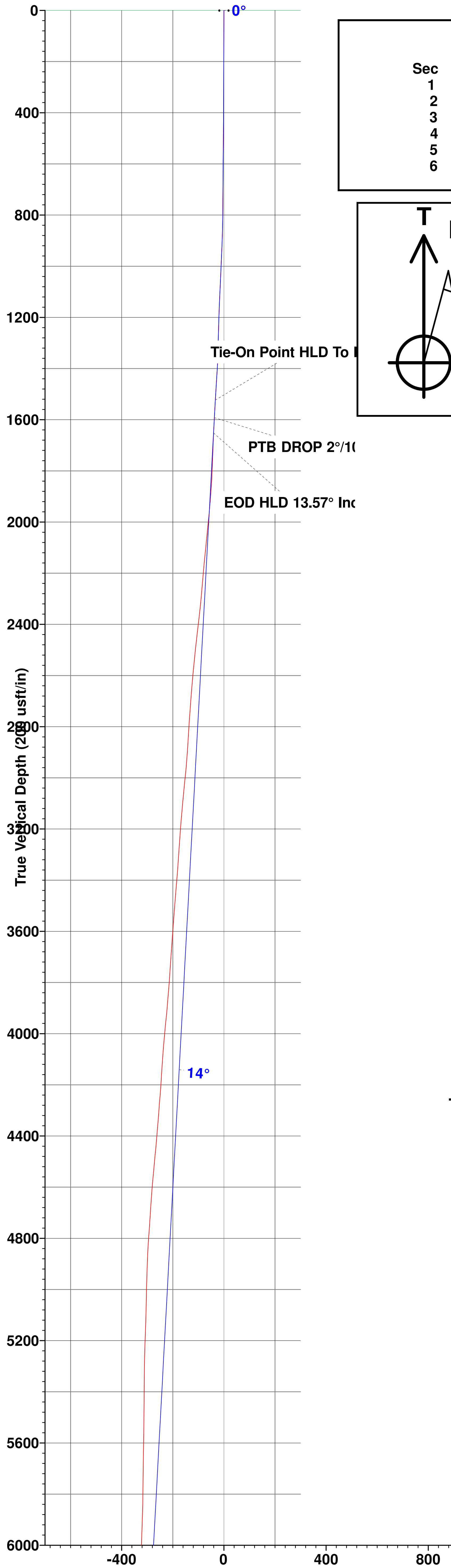


0.0 0.0 Northing 1367722.23 Easting 3140211.81 Latitude 40° 20' 30.145 N Longitude 104° 59' 49.182 W

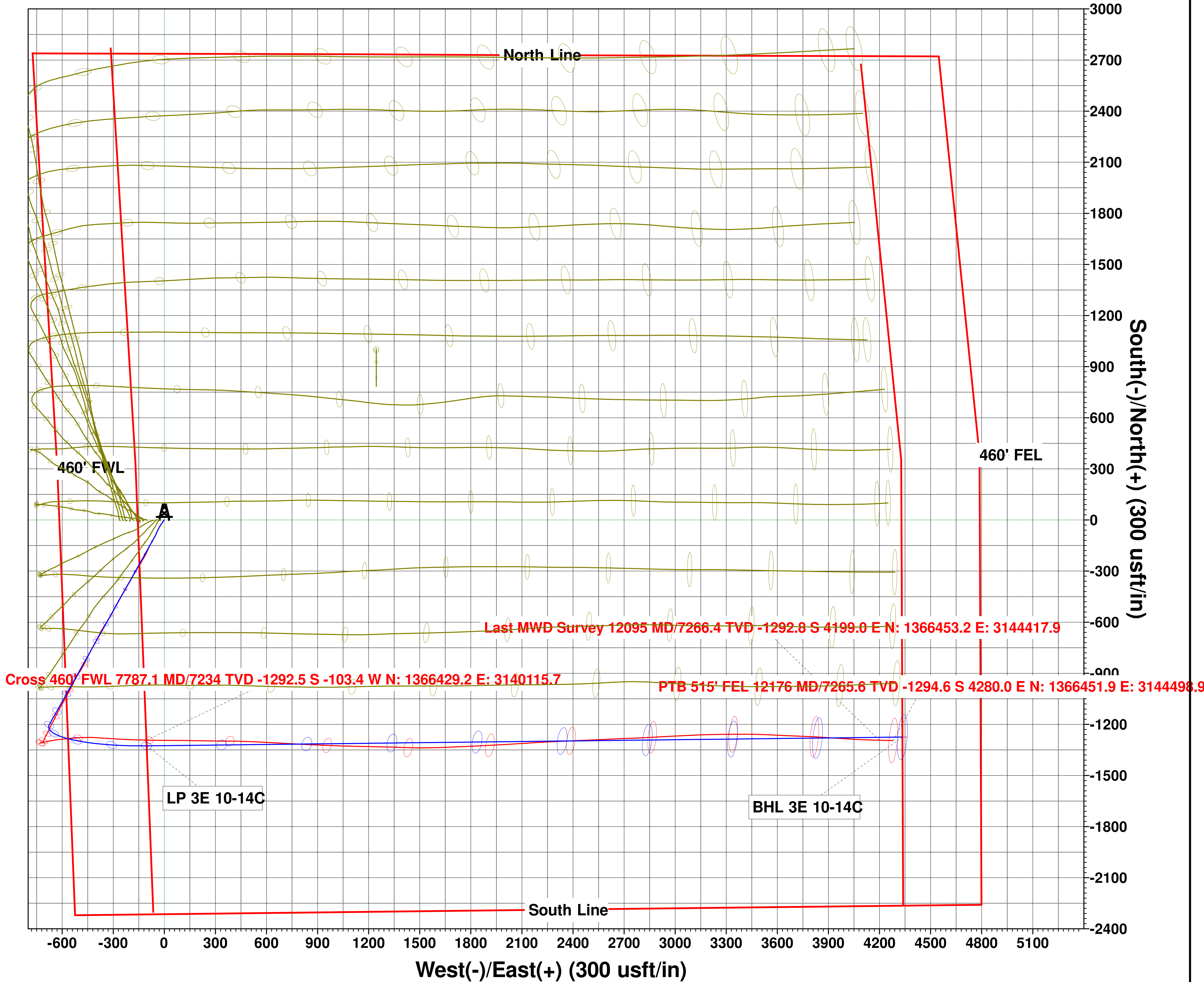
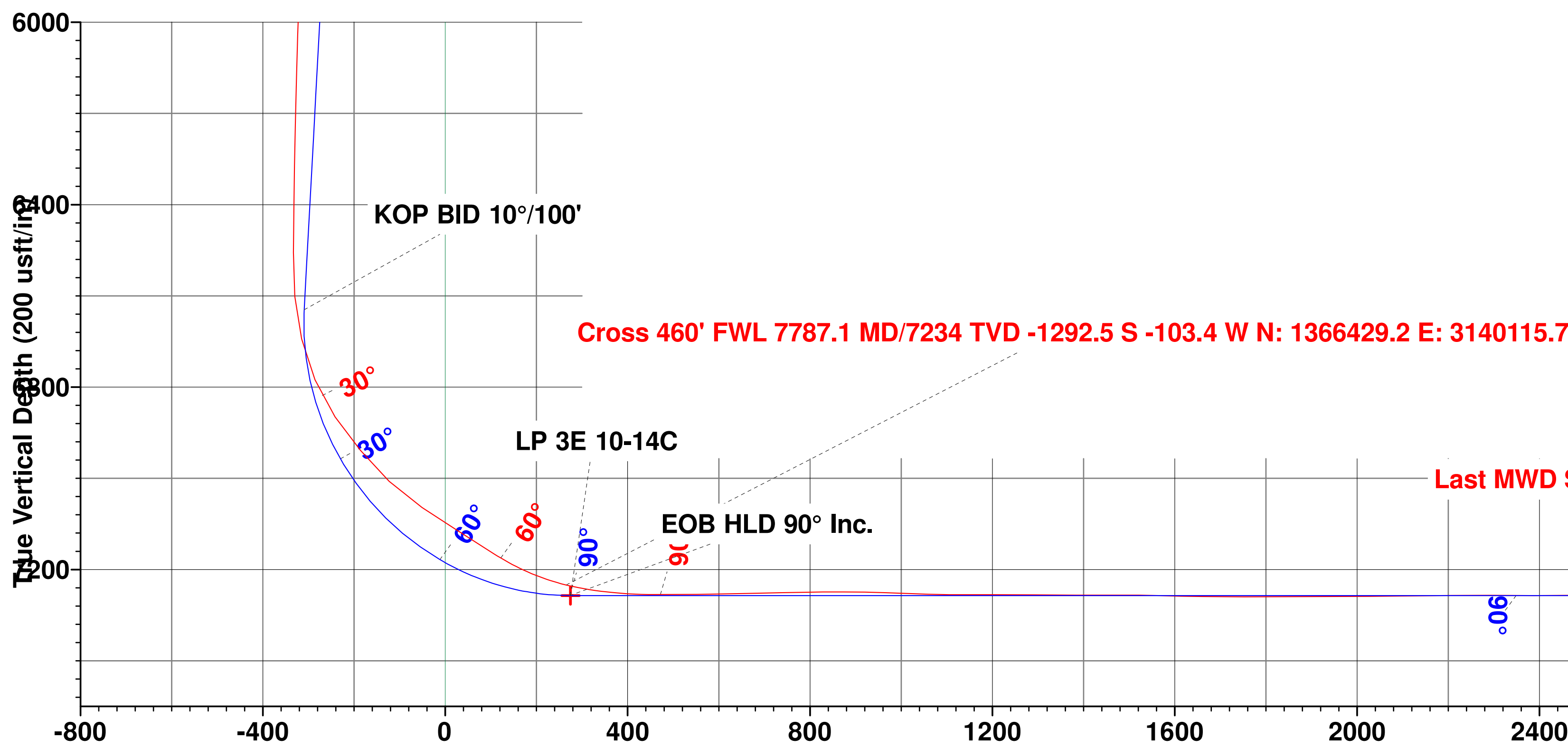
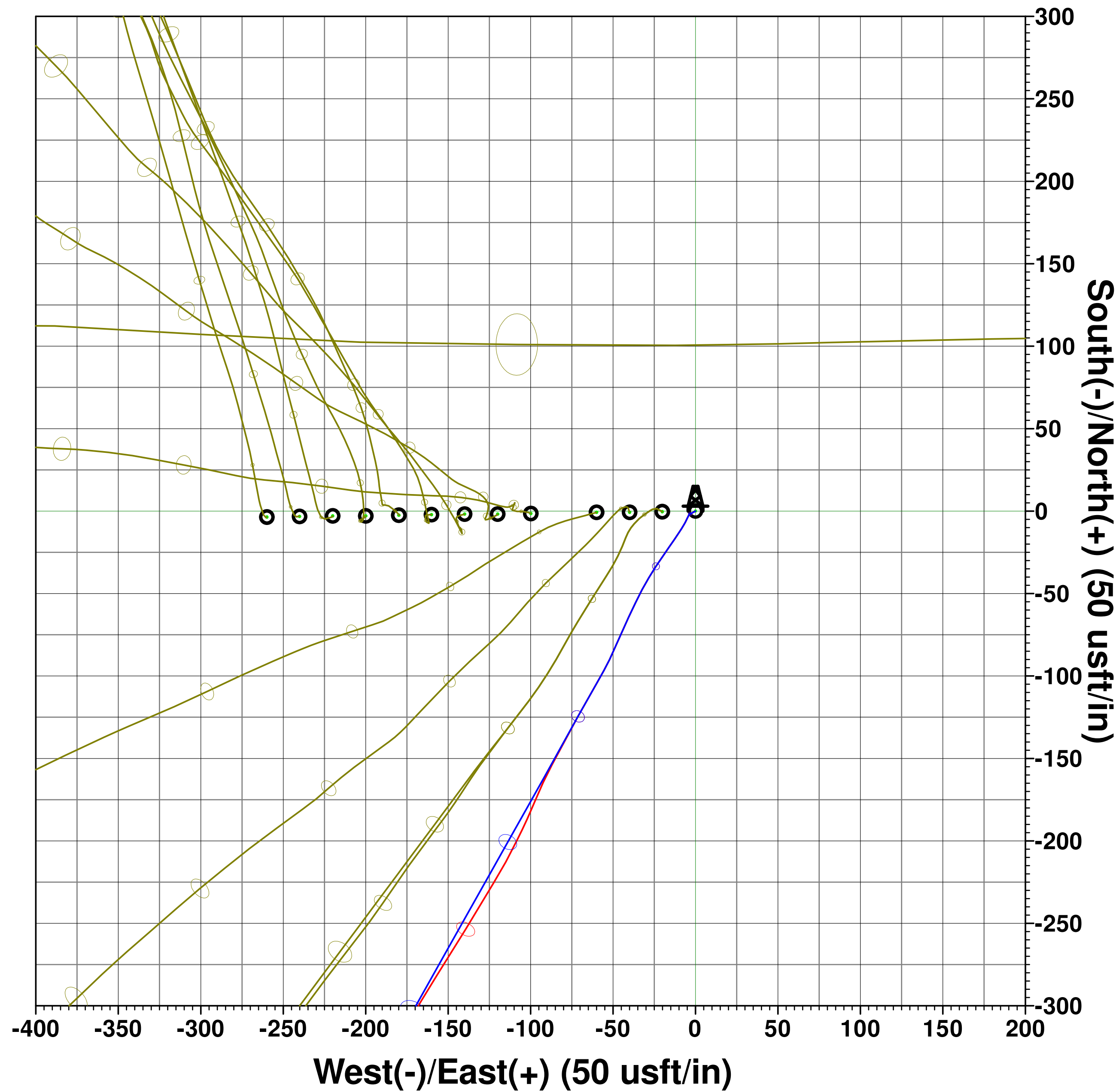
Planned Section Details									
Sec	MD	Inc	Azi	TVD	+N/-S	+E/-W	Dleg	TFace	VSect
1	1537.0	14.80	208.88	1523.5	-124.5	-71.2	0.00	0.00	-33.2
2	1608.0	14.80	208.88	1592.1	-140.3	-80.0	0.00	0.00	-37.2
3	1669.7	13.57	209.31	1651.9	-153.6	-87.4	2.00	175.31	-40.5
4	6791.2	13.57	209.31	6630.5	-1201.4	-675.6	0.00	0.00	-309.3
5	7758.6	90.00	89.34	7257.0	-1325.8	-105.1	10.00	-119.28	273.1
6	12198.4	90.00	89.34	7257.0	-1274.3	4334.4	0.00	0.00	4517.9



PROJECT DETAILS: WELD COUNTY, COLORADO (NAD 83)
Geodetic System: US State Plane 1983
Datum: North American Datum 1983
Ellipsoid: GRS 1980
Zone: Colorado Northern Zone
System Datum: Mean Sea Level
Local North: True



Vertical Section at 106.38° (200 usft/in)



Vertical Section at 106.38° (200 usft/in)