



EXTRACTION OIL & GAS  
Project: WELD COUNTY, COLORADO (NAD 83)  
Site: Sec 3, T4N-R68W 6th PM (KB 29' CORRECT 111917)  
Well: Jesser 3E 10-13N  
Wellbore: Wellbore #1  
Plan: Plan #2 (Jesser 3E 10-13N/Wellbore #1)

WELL DETAILS: Jesser 3E 10-13N

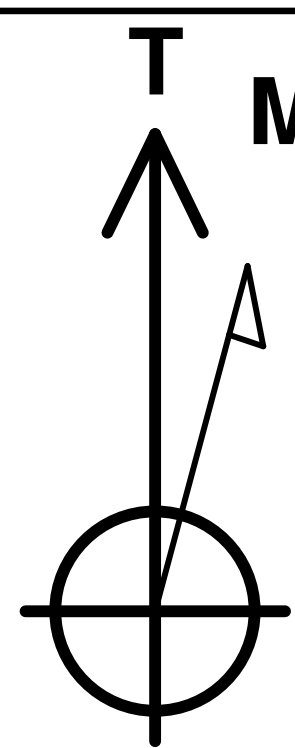
Ground Elevation:: 5110.0  
RKB Elevation: KB=29 @ 5139.0usft  
Rig Name:



0.0 0.0 Northing 1367721.74 Easting 3140191.74 Latitude 40° 20' 30.141 N Longitude 104° 59' 49.441 W

Planned Section Details

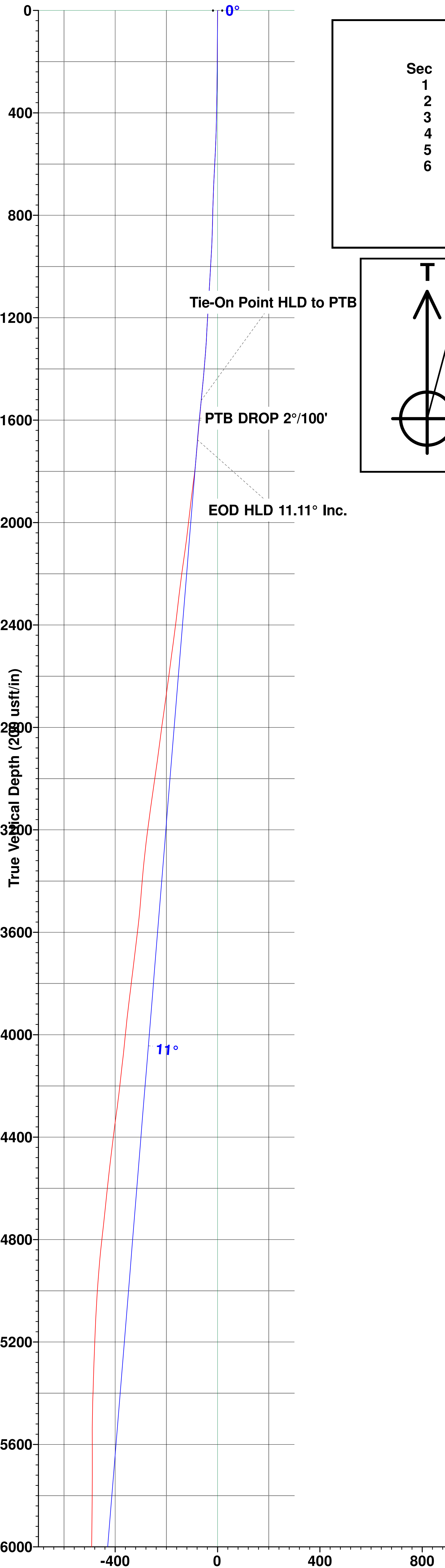
Sec	MD	Inc	Azi	TVD	+N/-S	+E/-W	Dleg	TFace	VSect
1	1537.0	12.81	218.27	1523.2	-131.1	-93.7	0.00	0.00	-63.7
2	1608.0	12.81	218.27	1592.4	-143.5	-103.4	0.00	0.00	-70.7
3	1694.6	11.11	216.65	1677.2	-157.7	-114.3	2.00	-169.62	-78.3
4	6517.6	11.11	216.65	6409.8	-903.4	-669.1	0.00	0.00	-462.5
5	7484.7	90.00	89.34	7042.0	-995.5	-99.0	10.00	-126.79	114.2
6	11937.0	90.00	89.34	7042.0	-943.9	4353.0	0.00	0.00	4454.2



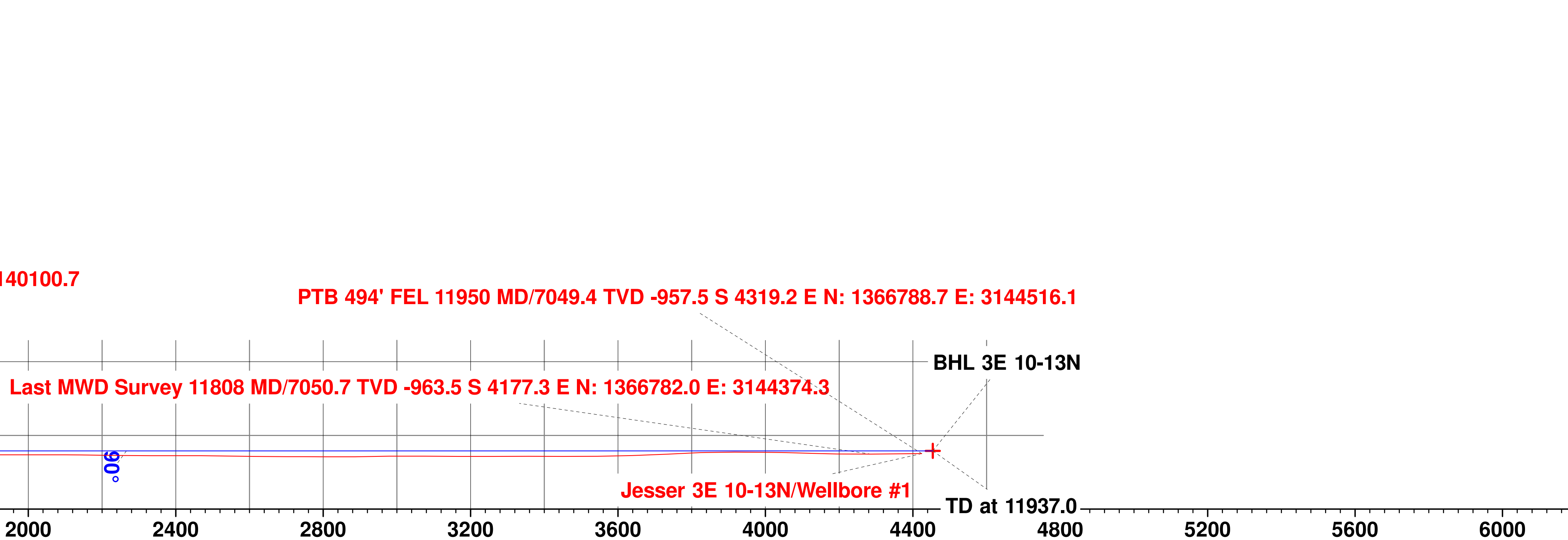
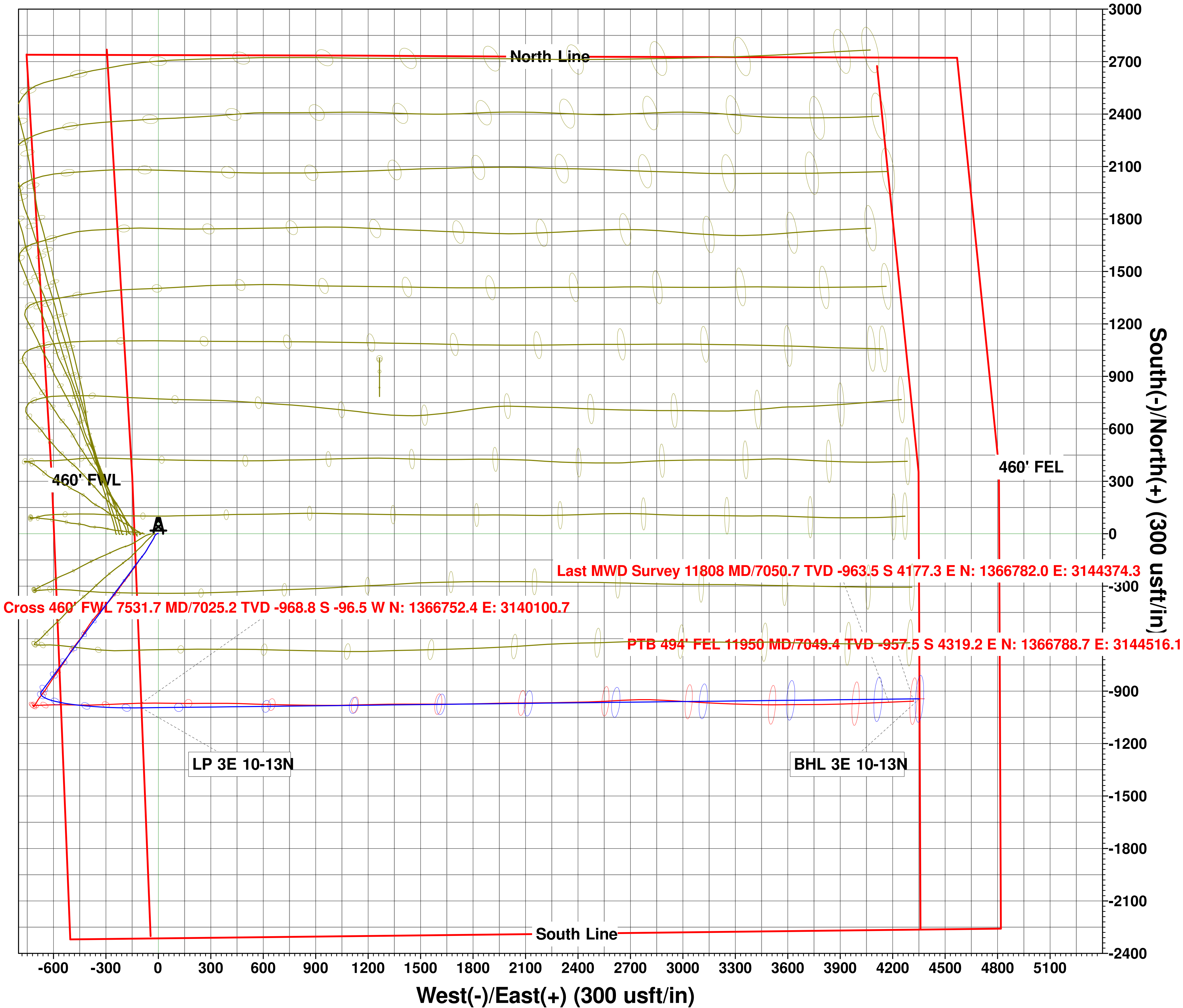
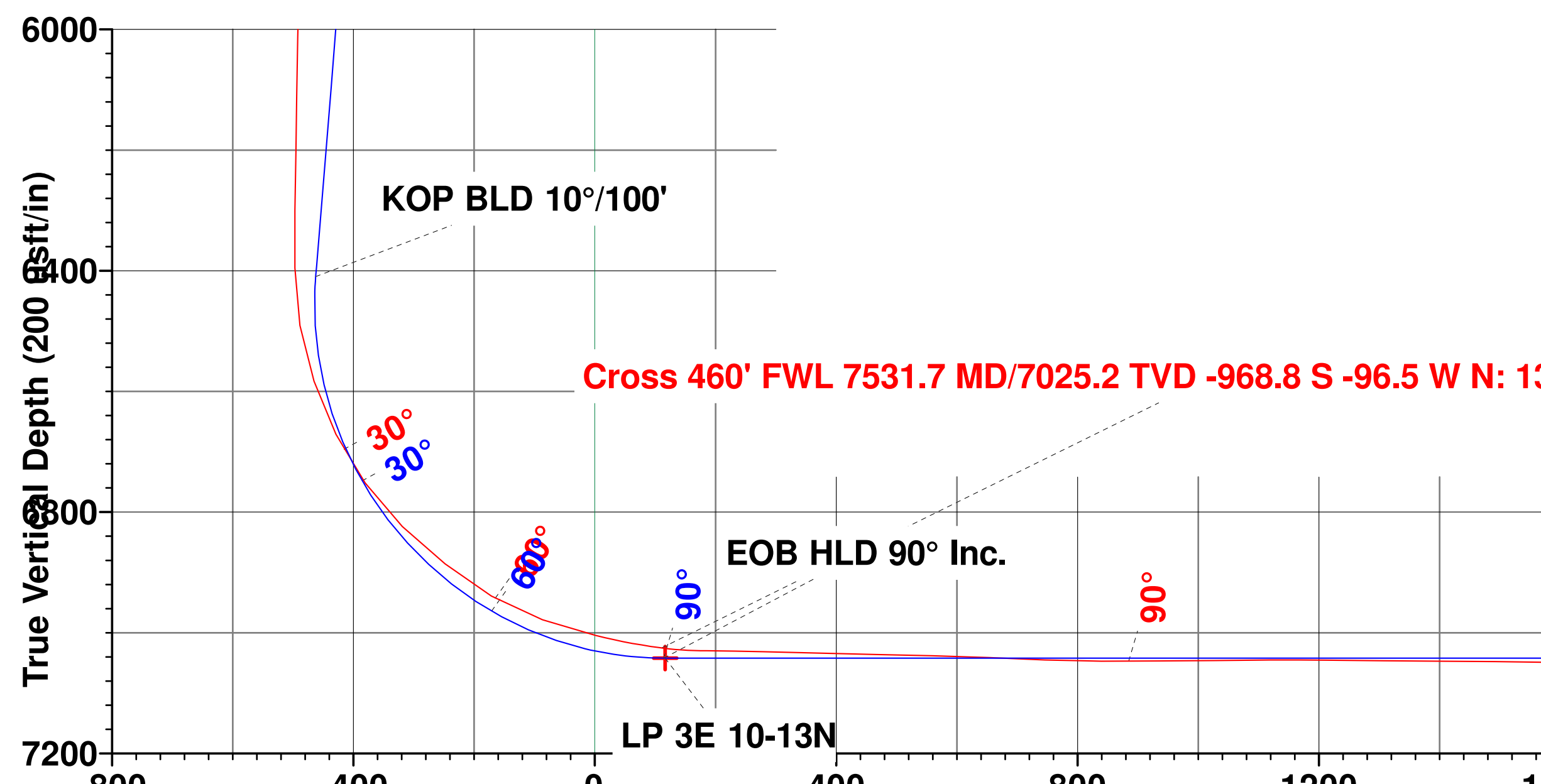
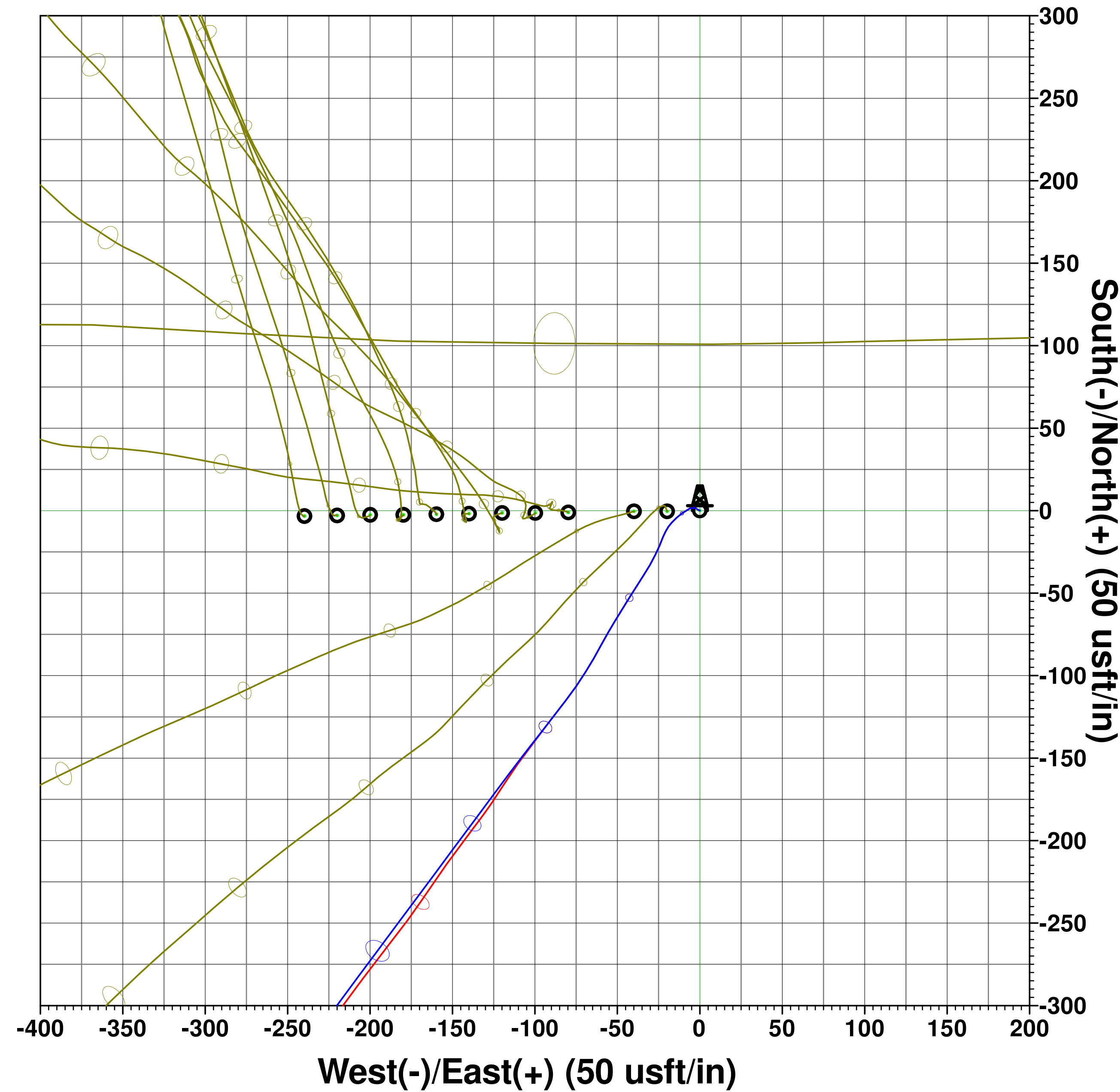
Mazimuths to True North  
Magnetic North: 8.28°

Magnetic Field  
Strength: 52279.4snT  
Dip Angle: 66.76°  
Date: 12/12/2017  
Model: IGRF2015

PROJECT DETAILS: WELD COUNTY, COLORADO (NAD 83)  
Geodetic System: US State Plane 1983  
Datum: North American Datum 1983  
Ellipsoid: GRS 1980  
Zone: Colorado Northern Zone  
System Datum: Mean Sea Level  
Local North: True



Vertical Section at 102.23° (200 usft/in)



Vertical Section at 102.23° (200 usft/in)