

OPERATOR: **Extraction Oil & Gas**

WELL NAME: **Jesser 3E-10-13N**

FIELD NAME: DJ Basin - Wattenberg

DRILLING RIG: Patterson 901

API #: 05-123-45670

LAT/LONG: 40.341706, -104.997067

SURFACE HOLE: NWSW S3-T4N-R68W, 2314' FSL, 596' FWL

BOTTOM HOLE: S3-T4N-R68W, 1320' FSL, 460' FEL



Earth Science Agency, LLC

COUNTY: Weld

STATE: Colorado

GROUND ELEVATION: 5110'

KELLY BUSHING: 5139'

DRILLING FLUID: OBM

TVD VS. MD: 7049' / 11950'

SPUD DATE: December 29, 2017

TD DATE: December 31, 2017

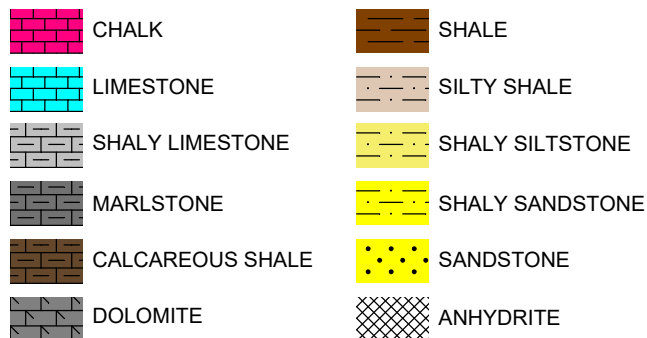
DEPTHS LOGGED: 6000' - 11950'

DATES LOGGED: December 29, 2017 - December 31, 2017

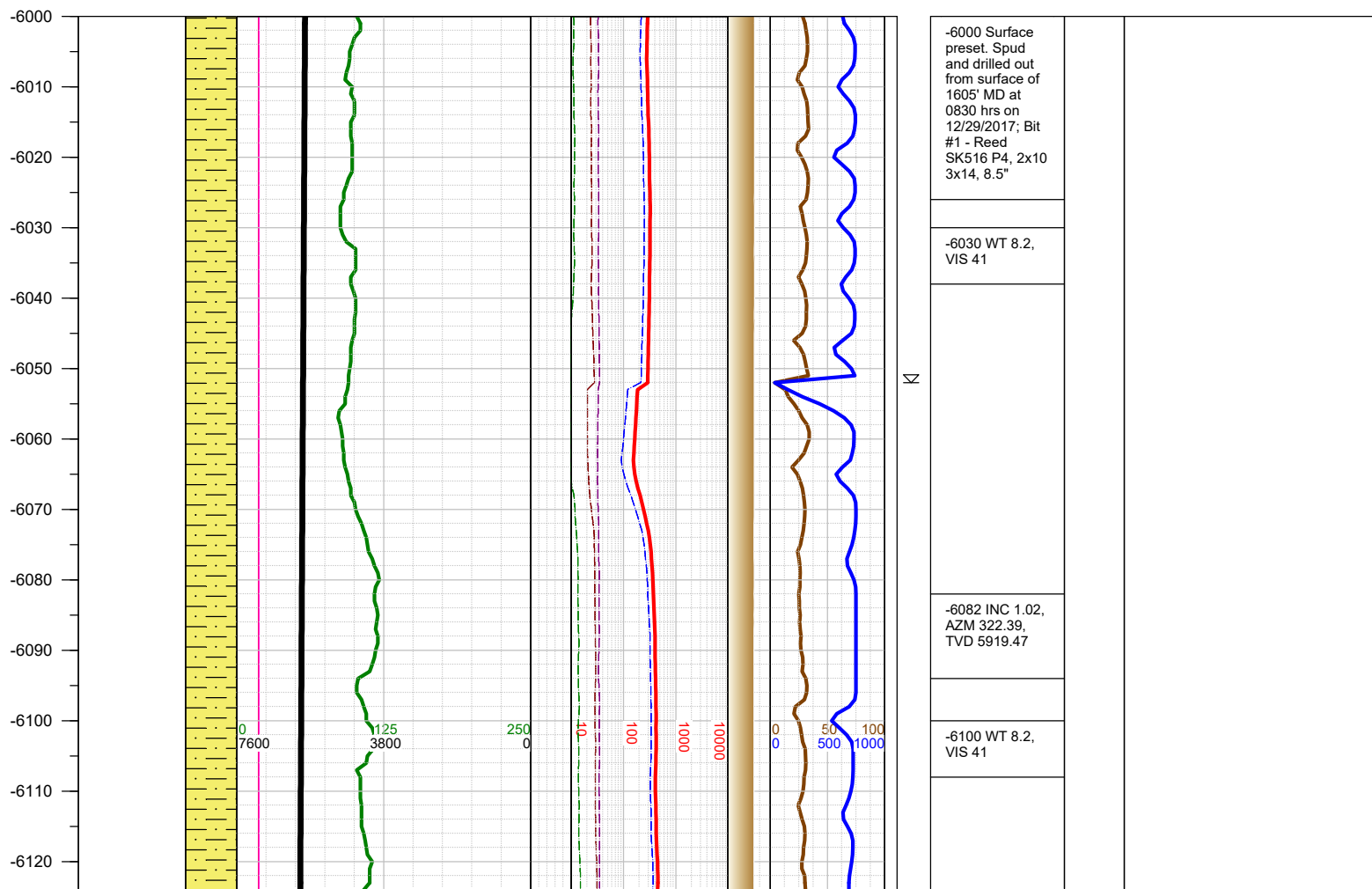
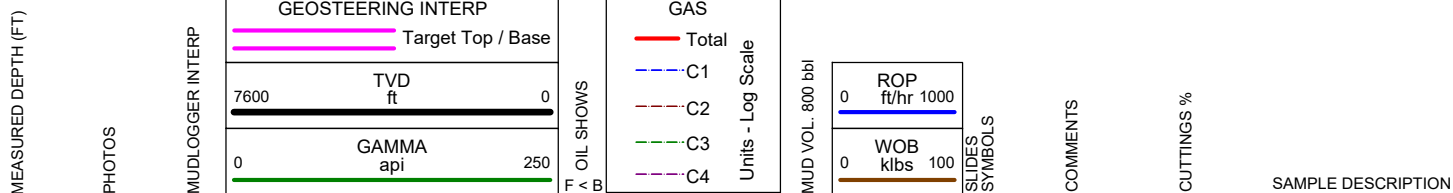
GEOLOGISTS: Blake Eatherton, Dominic Pitre

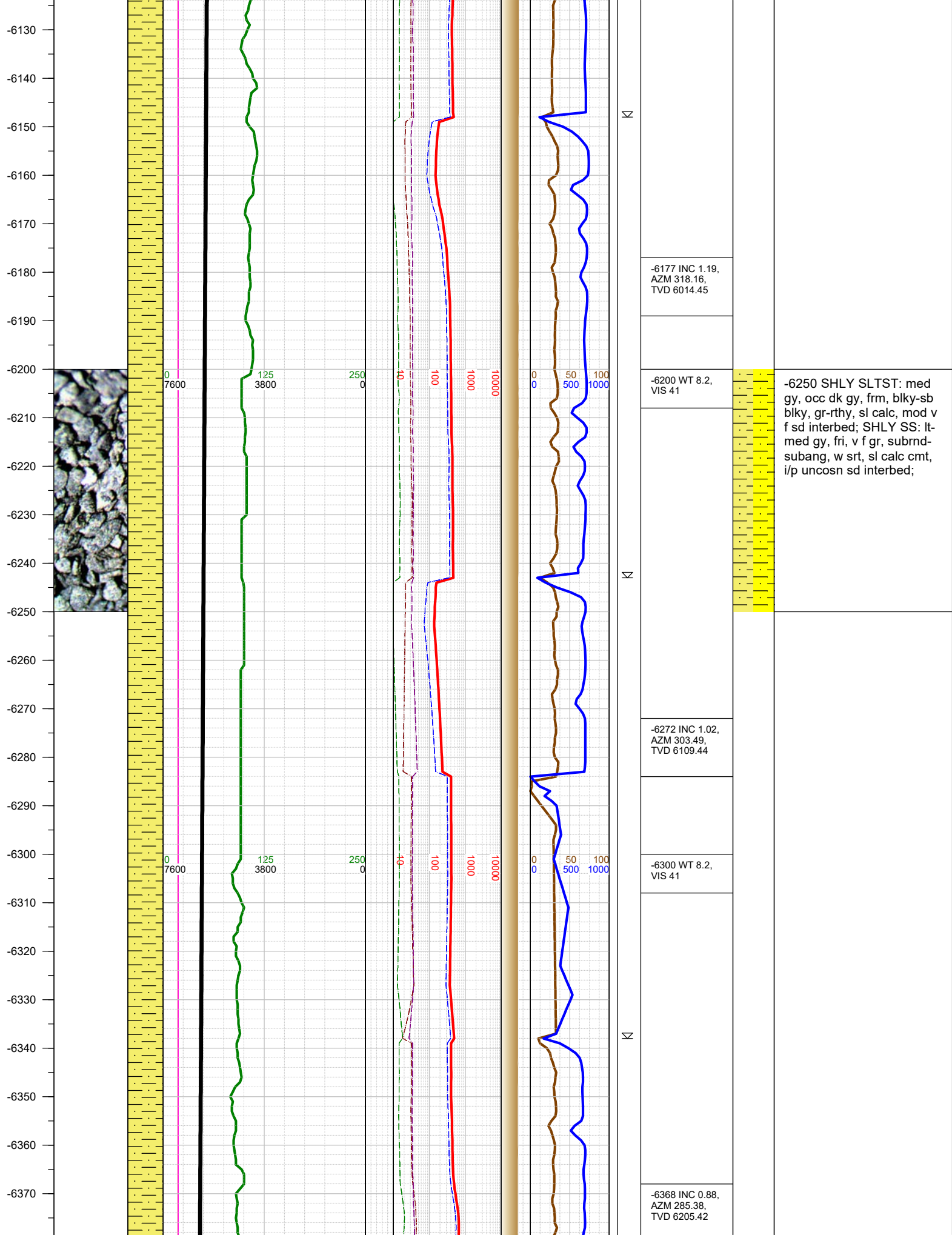
SCALE: 5" = 100'

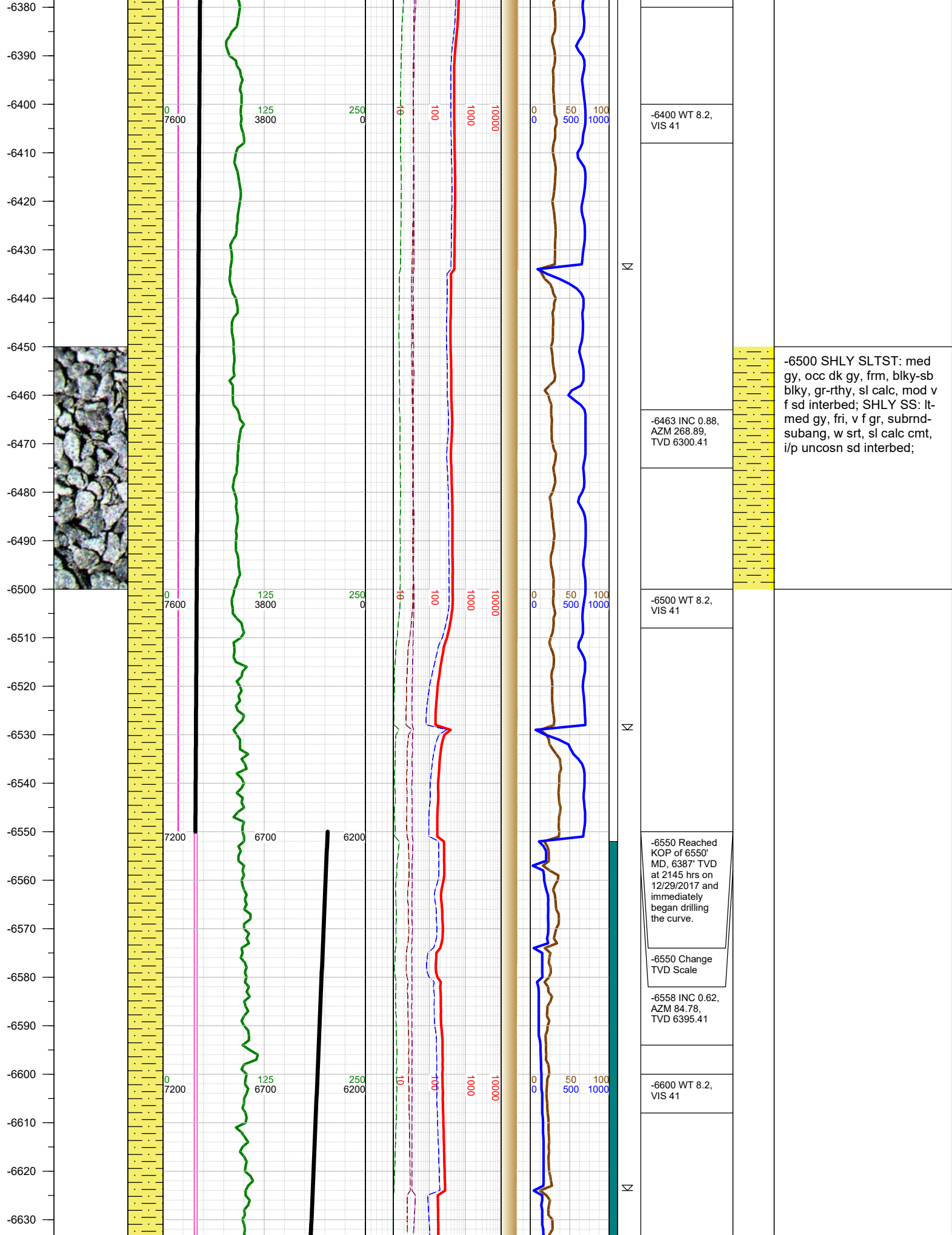
LEGEND

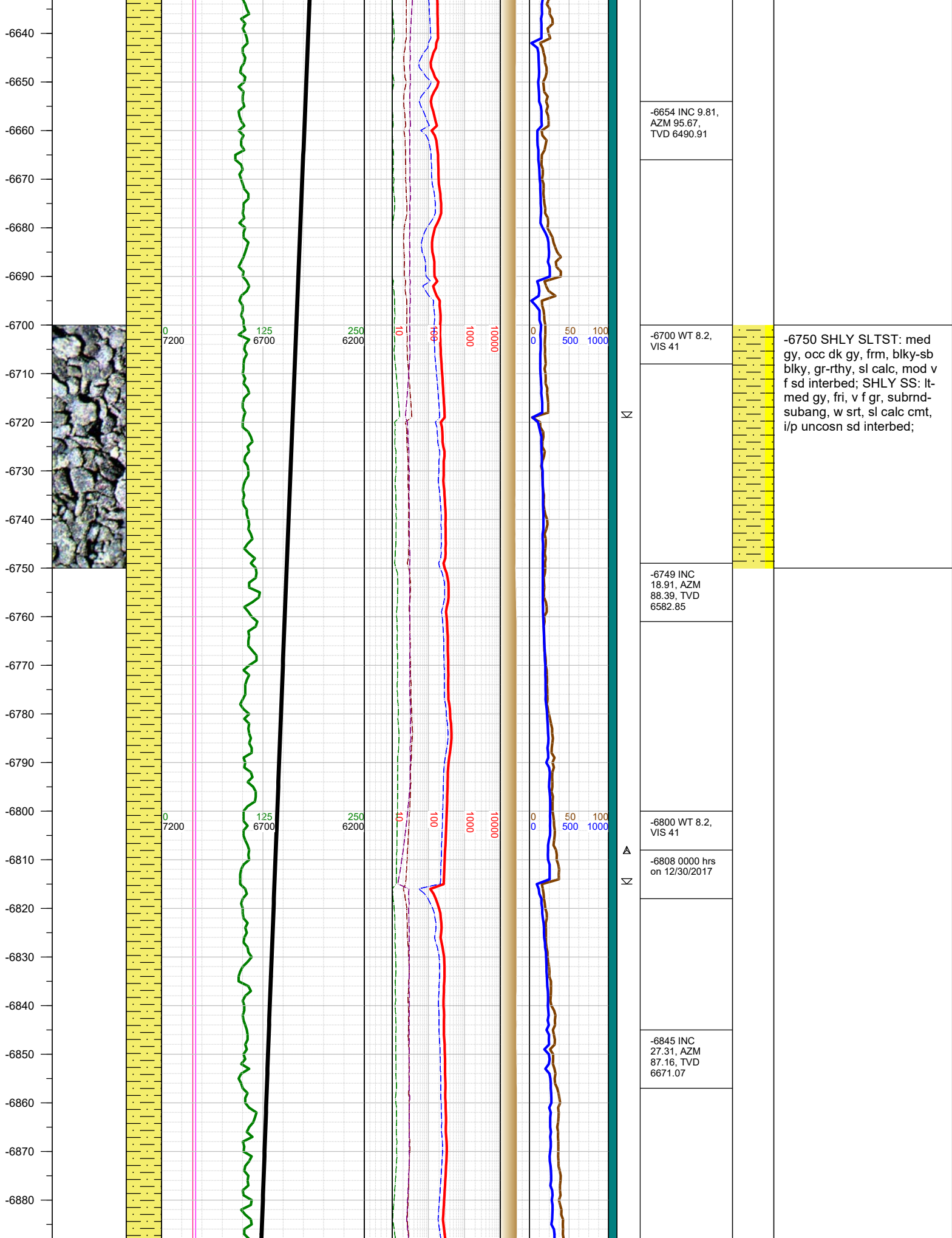


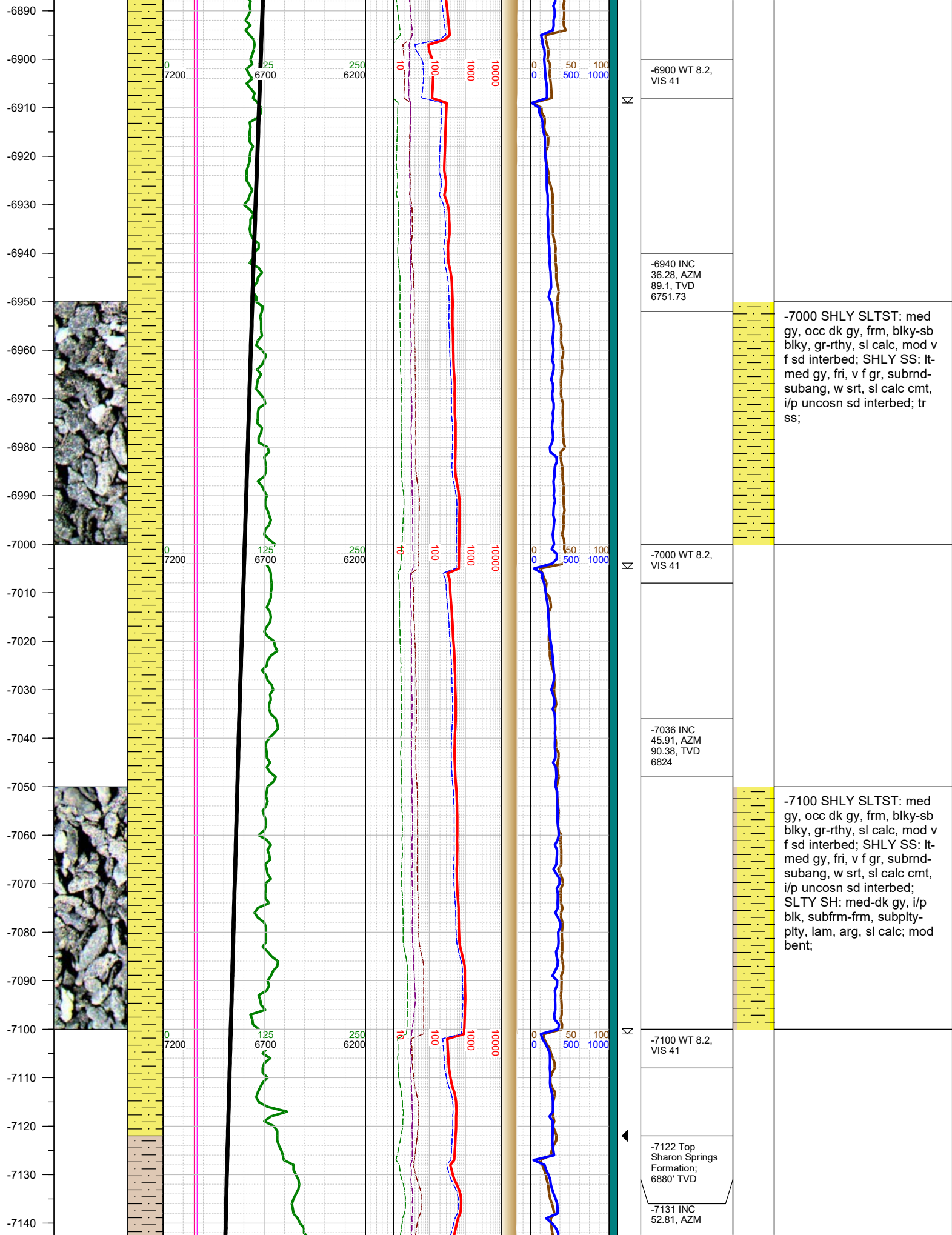
FORMATION \approx CONNECTION Δ MIDNIGHT NEW BIT GAS SHOW FAULT

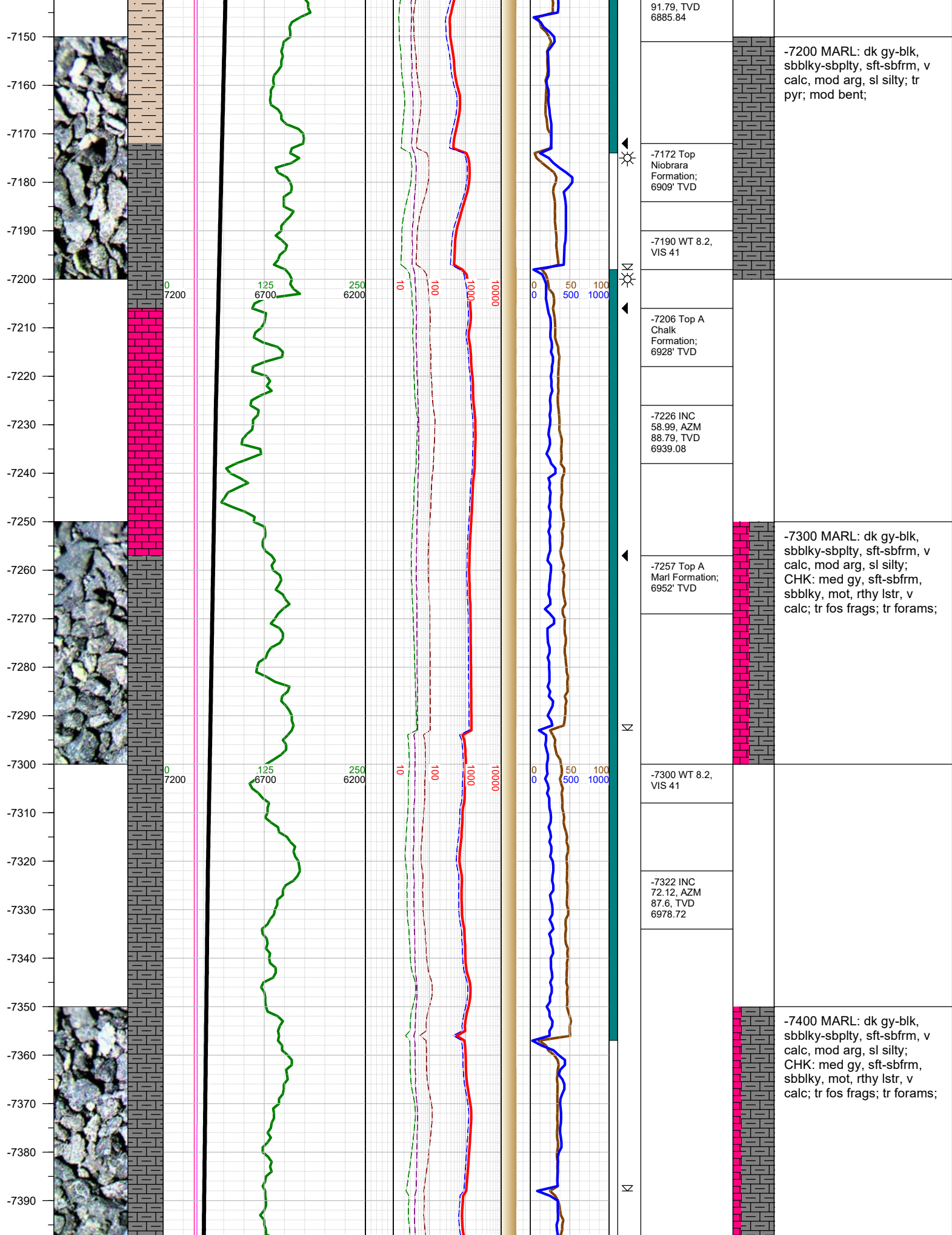


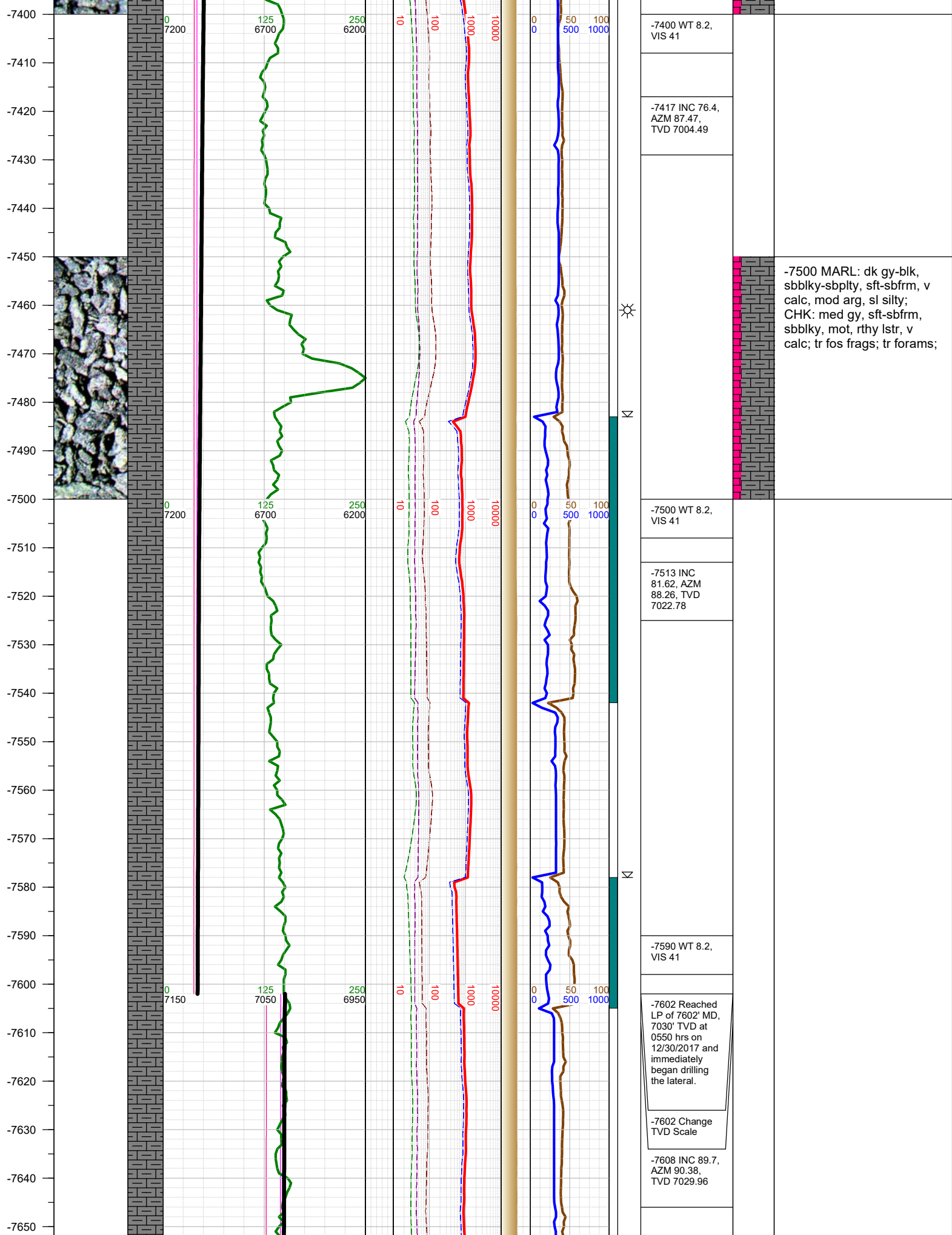


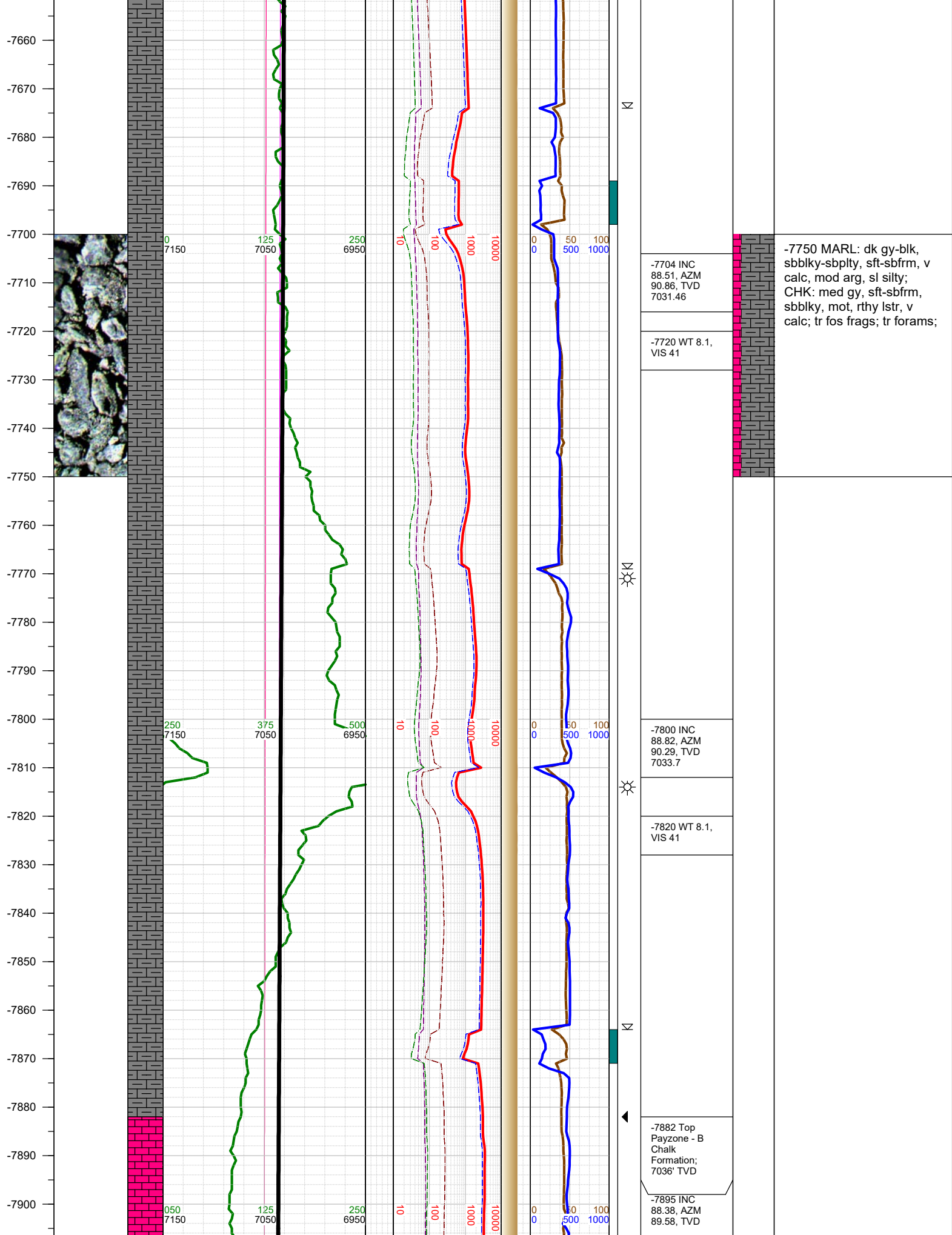


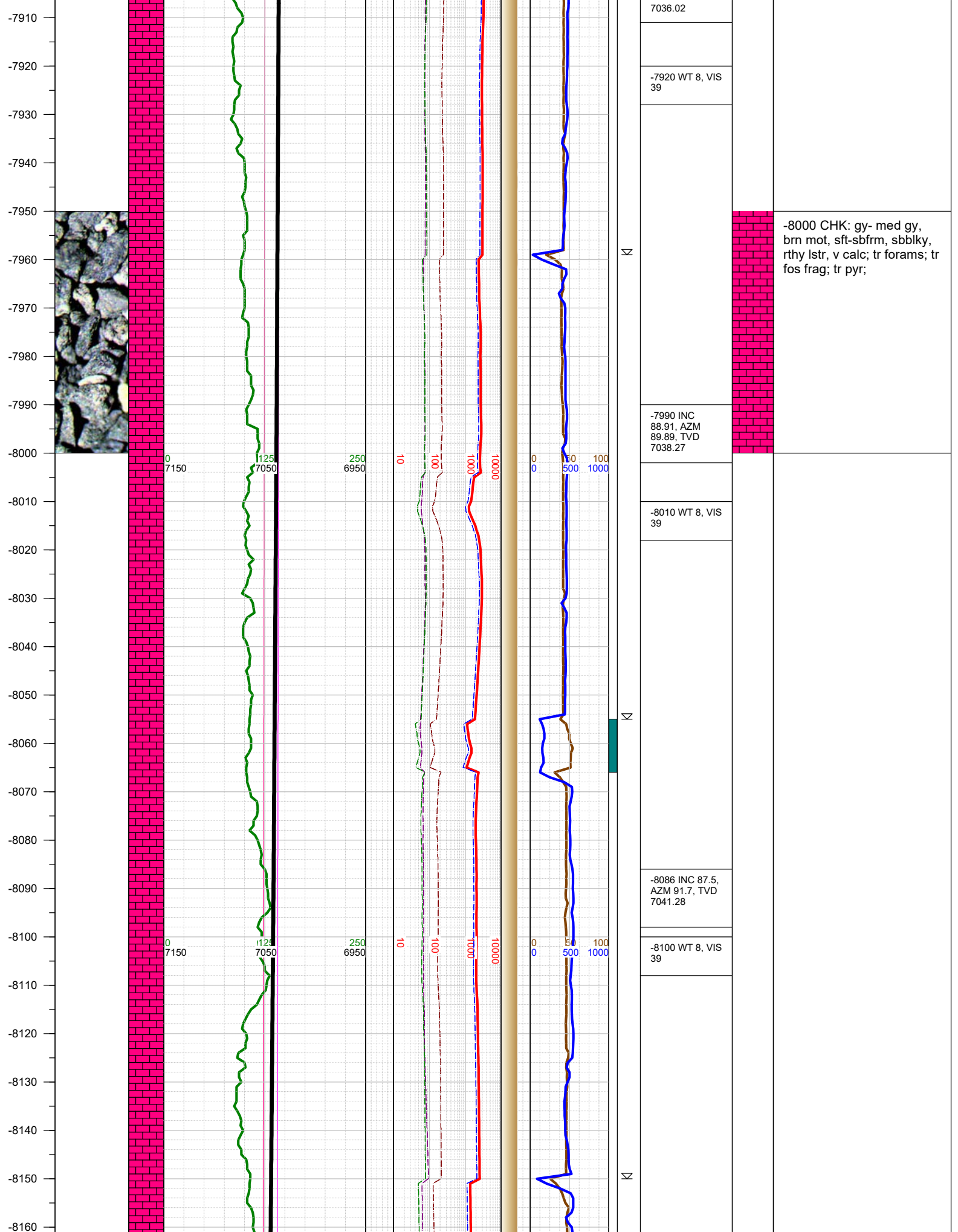


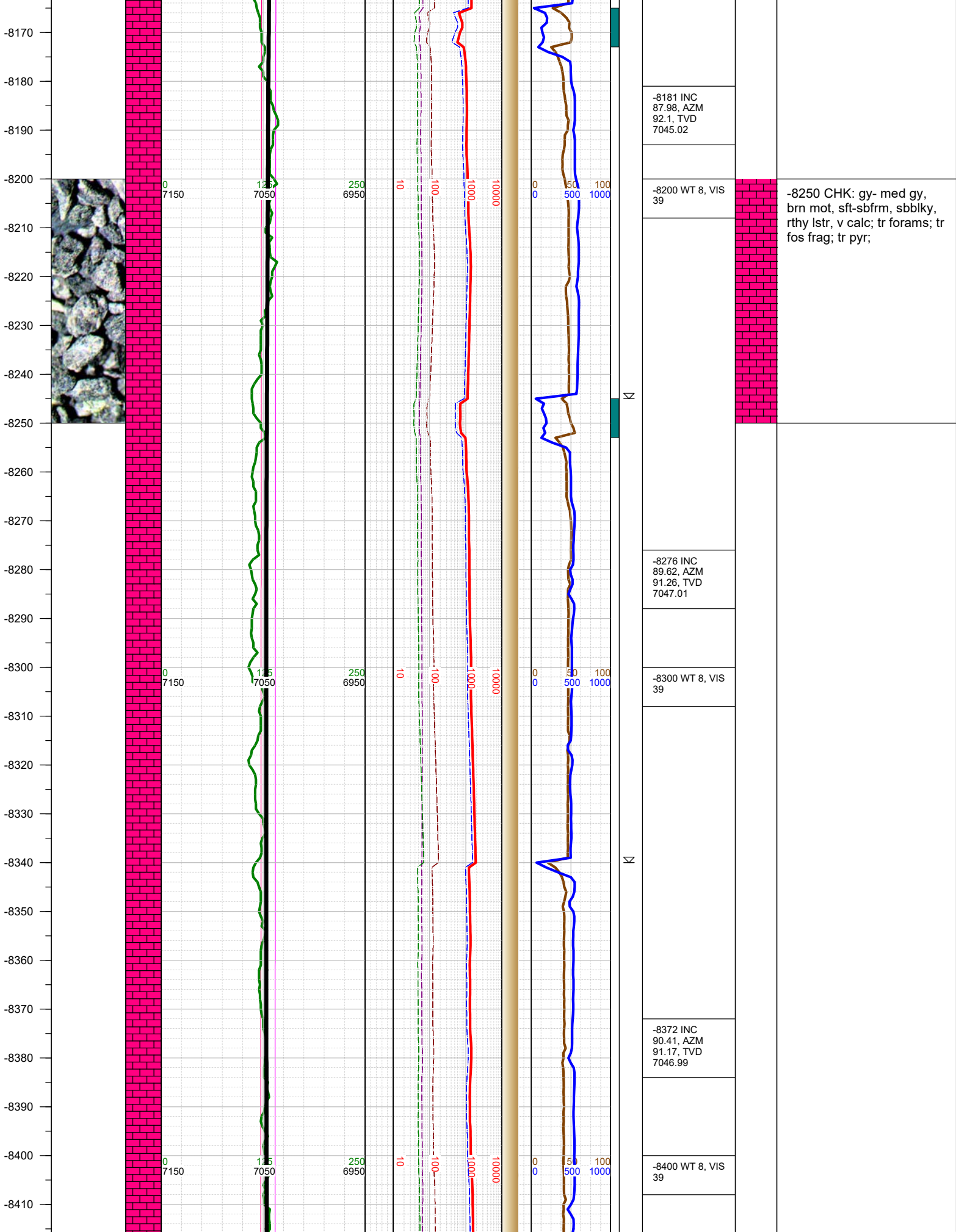












-8420
-8430
-8440
-8450
-8460
-8470
-8480
-8490
-8500
-8510
-8520
-8530
-8540
-8550
-8560
-8570
-8580
-8590
-8600
-8610
-8620
-8630
-8640
-8650
-8660
-8670



0
7150

125
7050

250
6950

10

100

1000

10000

0
0

50
500

100
1000

N

N

N

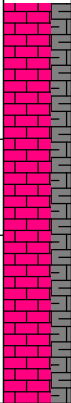
-8467 INC
90.59, AZM
90.69, TVD
7046.16

-8500 WT 8, VIS
39

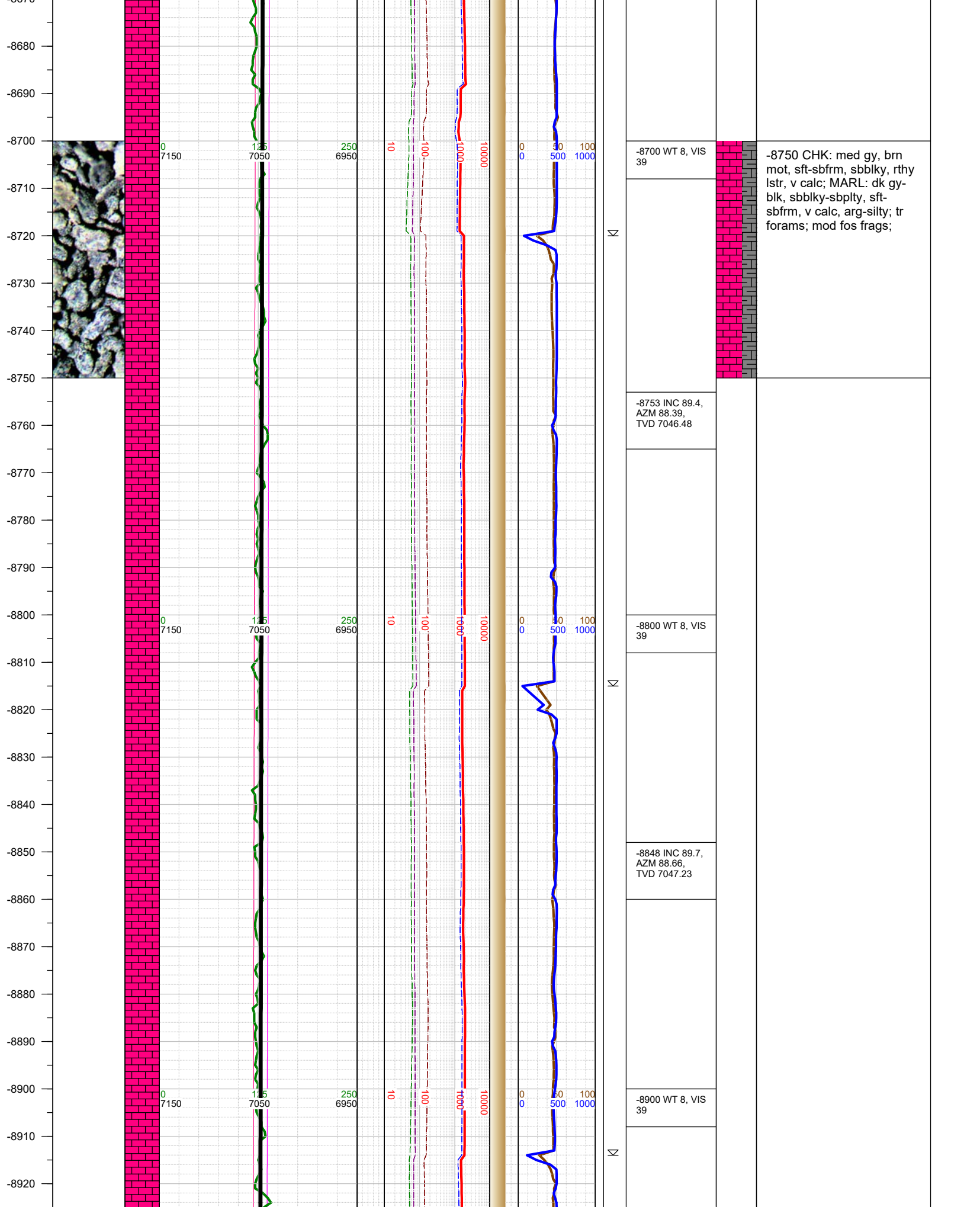
-8562 INC
90.41, AZM
90.47, TVD
7045.33

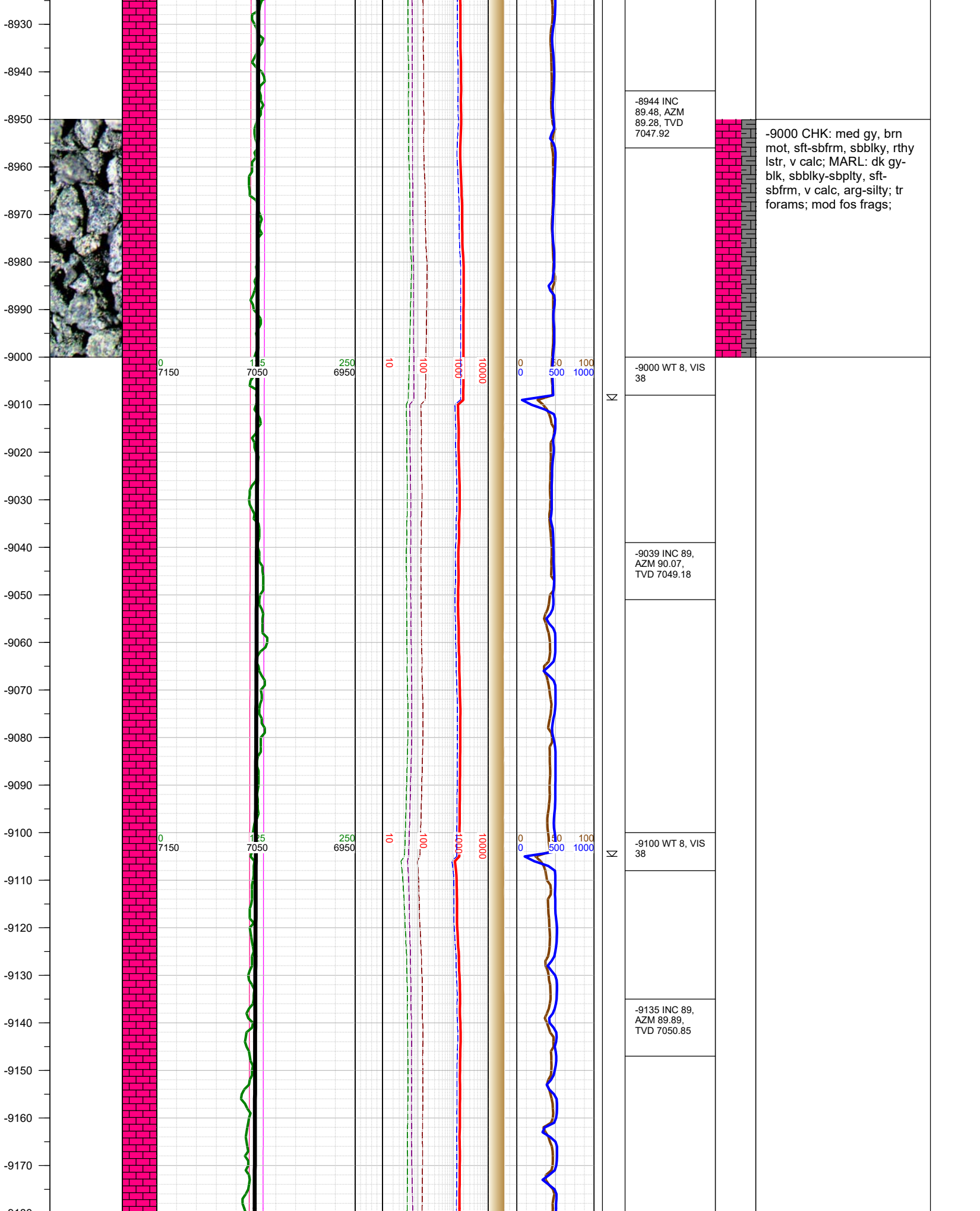
-8600 WT 8, VIS
39

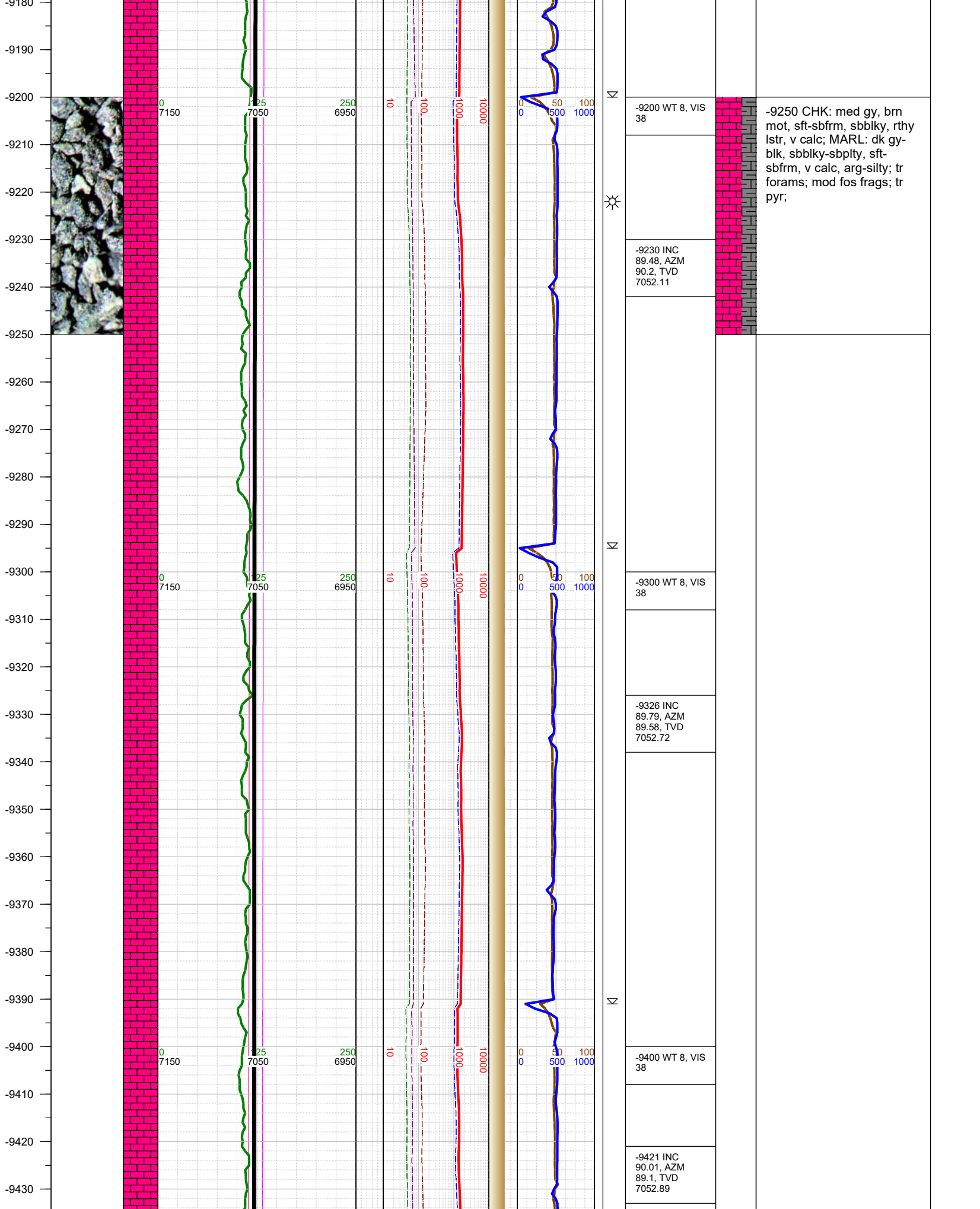
-8658 INC 89.4,
AZM 89.1, TVD
7045.49



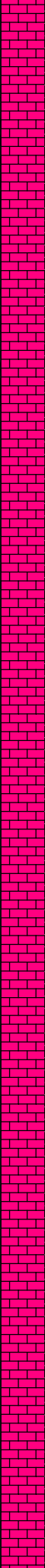
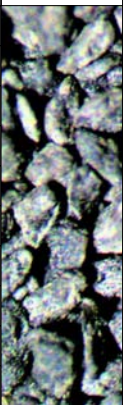
-8500 CHK: med gy, brn
mot, sft-sbfrm, sbblky, rthy
lstr, v calc; MARL: dk gy-
blk, sbblky-sbplty, sft-
sbfrm, v calc, arg-silty; tr
forams; mod fos frags;







-9440
-9450
-9460
-9470
-9480
-9490
-9500
-9510
-9520
-9530
-9540
-9550
-9560
-9570
-9580
-9590
-9600
-9610
-9620
-9630
-9640
-9650
-9660
-9670
-9680



0
7150

25
7050

250
6950

10

100

1000

10000

0
0

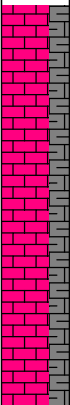
50
500

100
1000

Σ

Σ

Σ



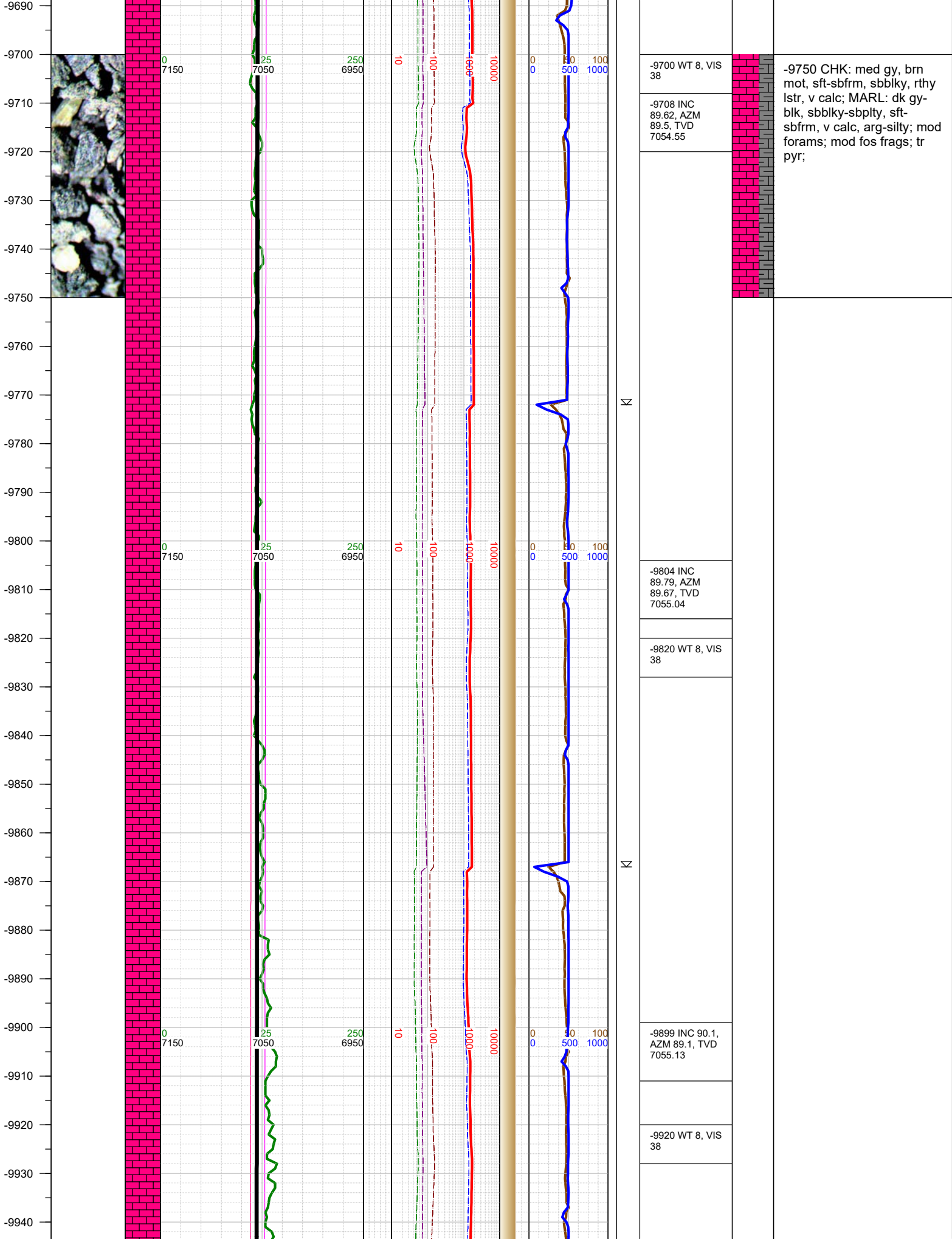
-9500 CHK: med gy, brn
mot, sft-sbfrm, sbblky, rthy
lstr, v calc; MARL: dk gy-
blk, sbblky-sbply, sft-
sbfrm, v calc, arg-silty; tr
forams; mod fos frags; tr
pyr;

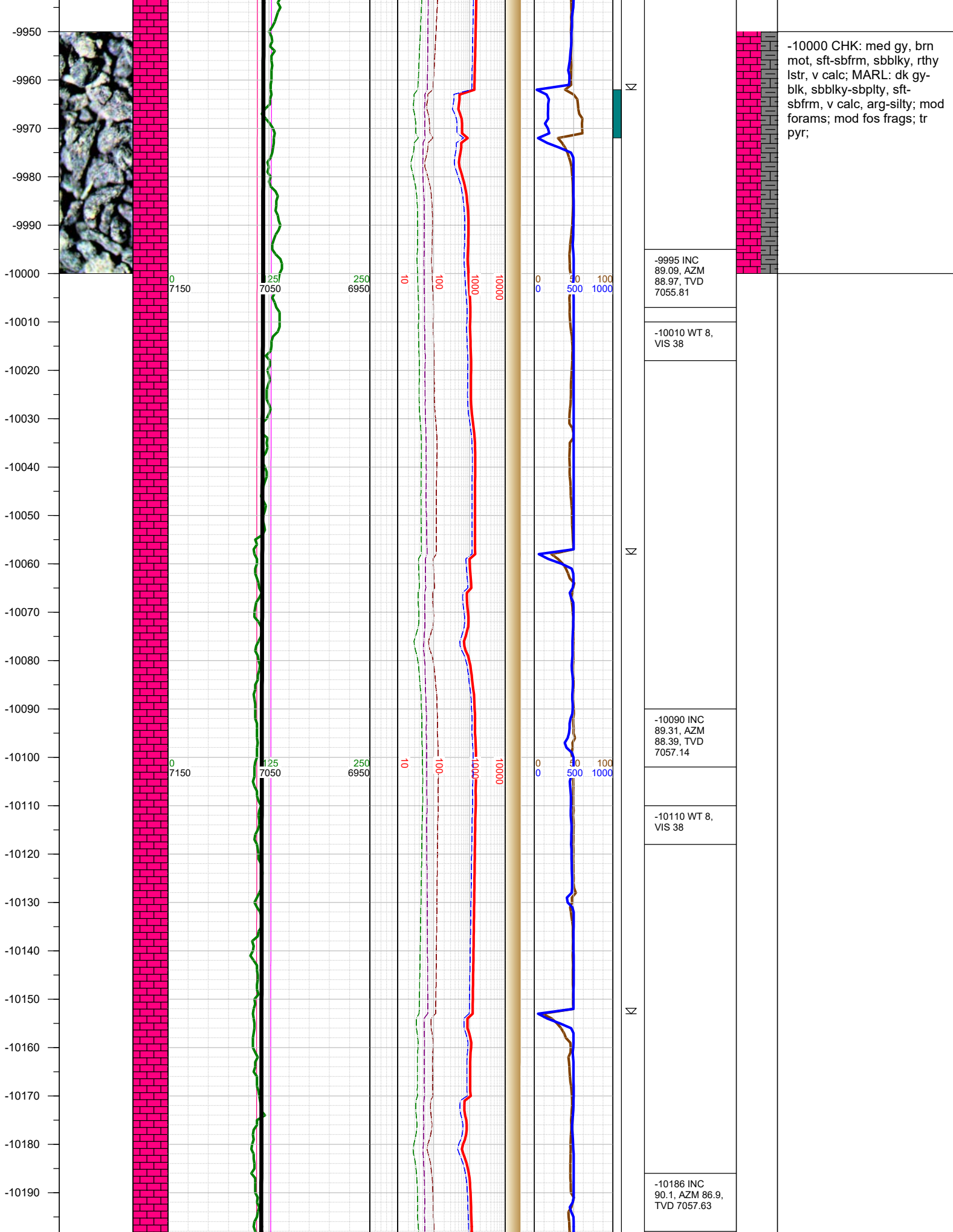
-9500 WT 8, VIS
38

-9517 INC
90.19, AZM
88.26, TVD
7052.72

-9600 WT 8, VIS
38

-9612 INC 89,
AZM 89.1, TVD
7053.39





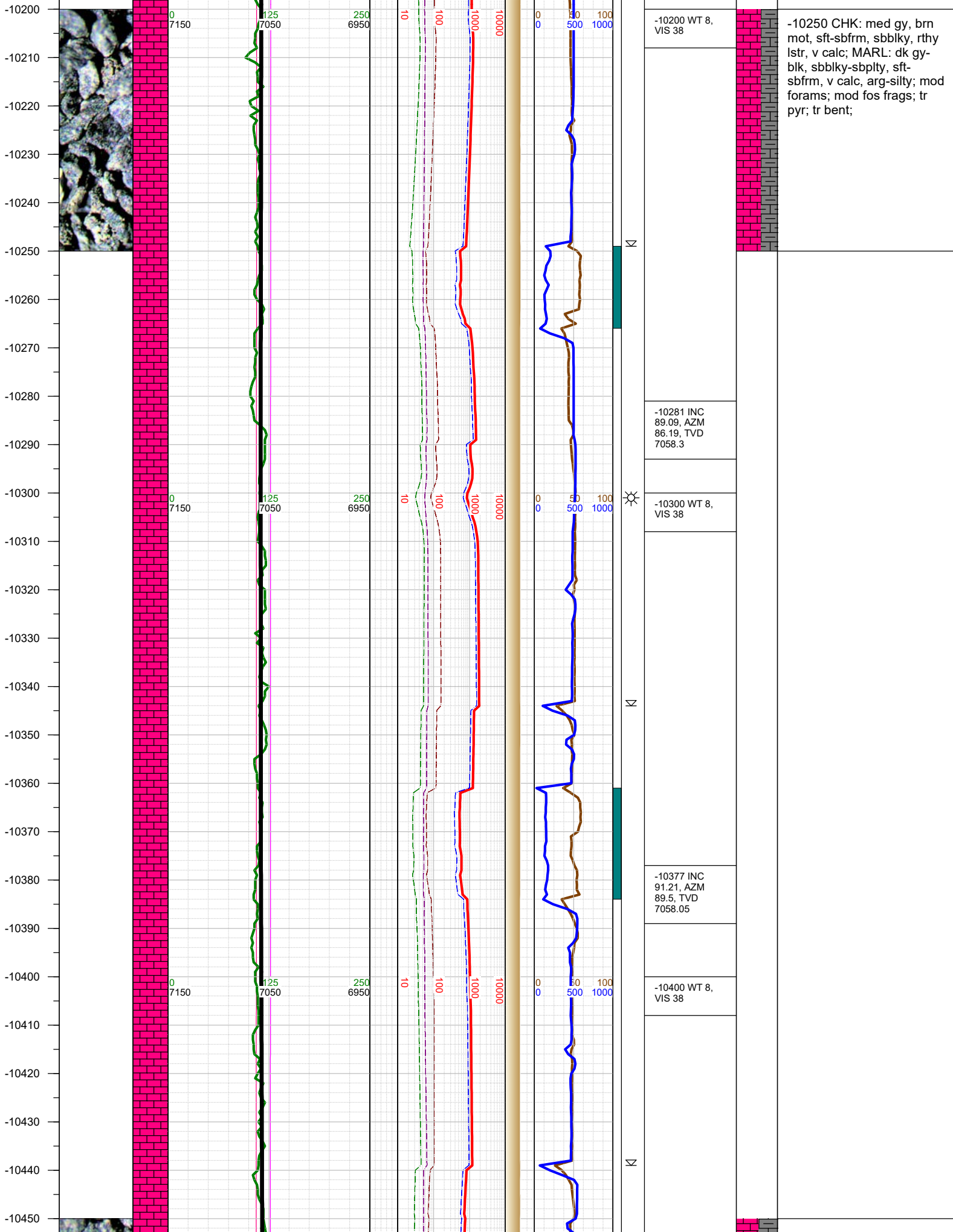
-9995 INC
89.09, AZM
88.97, TVD
7055.81

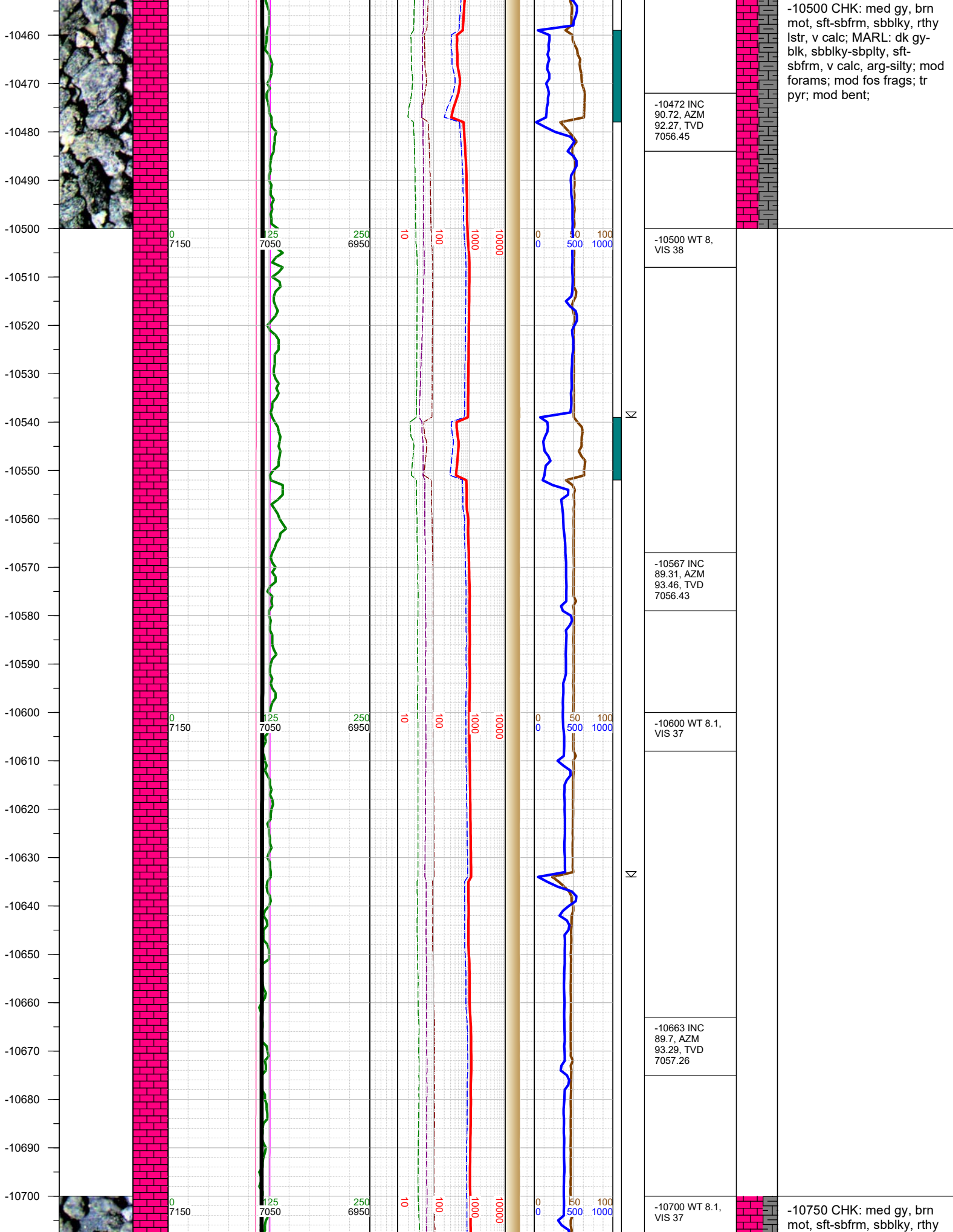
-10010 WT 8,
VIS 38

-10090 INC
89.31, AZM
88.39, TVD
7057.14

-10110 WT 8,
VIS 38

-10186 INC
90.1, AZM 86.9,
TVD 7057.63





-10500 CHK: med gy, brn mot, sft-sbfrm, sbbiky, rthy lstr, v calc; MARL: dk gy-blk, sbbiky-sbpity, sft-sbfrm, v calc, arg-silty; mod forams; mod fos frags; tr pyr; mod bent;

-10472 INC
90.72, AZM
92.27, TVD
7056.45

-10500 WT 8,
VIS 38

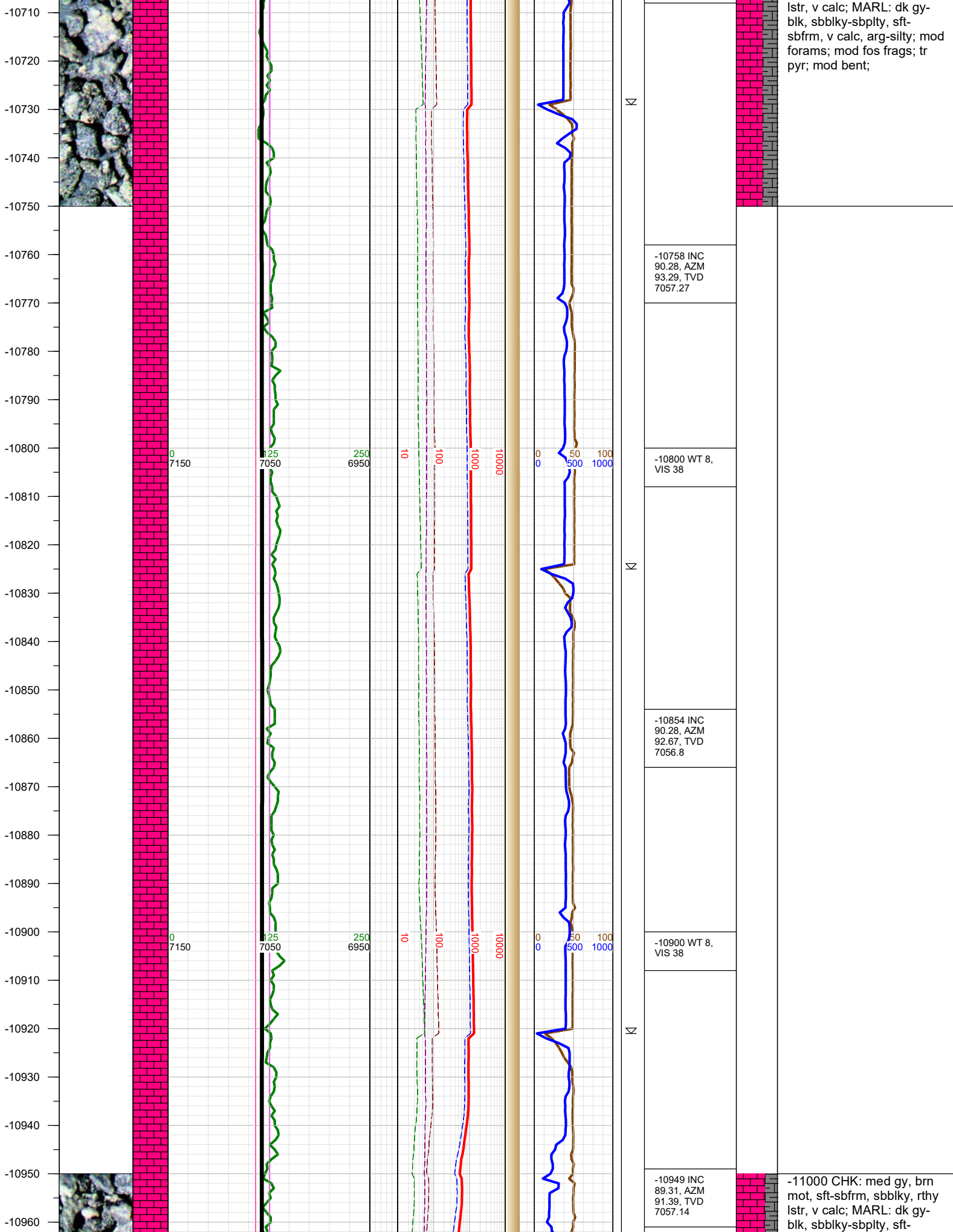
-10567 INC
89.31, AZM
93.46, TVD
7056.43

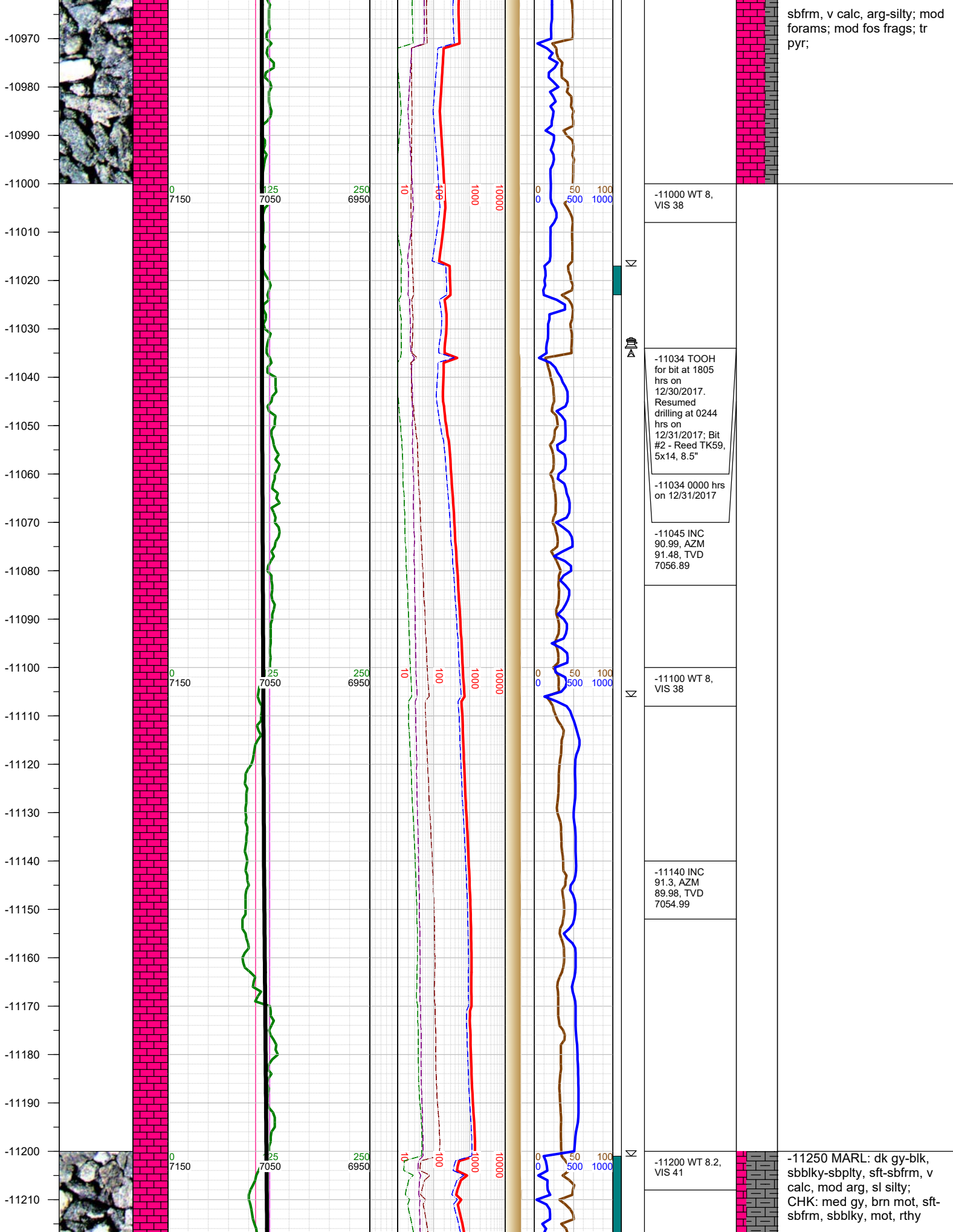
-10600 WT 8.1,
VIS 37

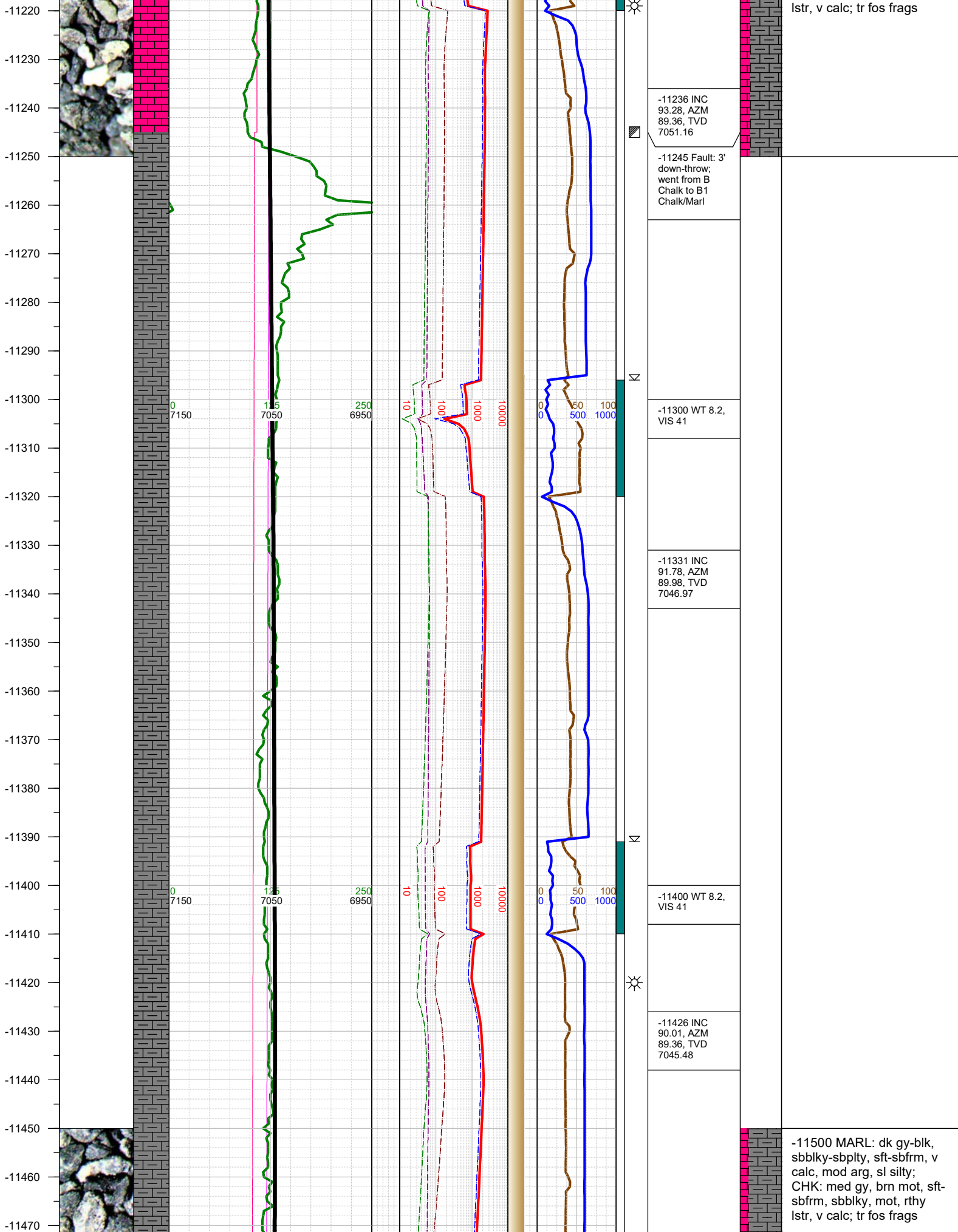
-10663 INC
89.7, AZM
93.29, TVD
7057.26

-10700 WT 8.1,
VIS 37

-10750 CHK: med gy, brn mot, sft-sbfrm, sbbiky, rthy







lstr, v calc; tr fos frags

-11500 MARL: dk gy-blk, sbblky-sbplty, sft-sbfrm, v calc, mod arg, sl silty; CHK: med gy, brn mot, sft-sbfrm, sbblky, mot, rthy lstr, v calc; tr fos frags

