



EXTRACTION OIL & GAS  
Project: WELD COUNTY, COLORADO (NAD 83)  
Site: Sec 3, T4N-R68W 6th PM (KB 29' CORRECT 111917)  
Well: Jesser 3E 10-11N  
Wellbore: Wellbore #1  
Plan: Plan #2 (Jesser 3E 10-11N/Wellbore #1)

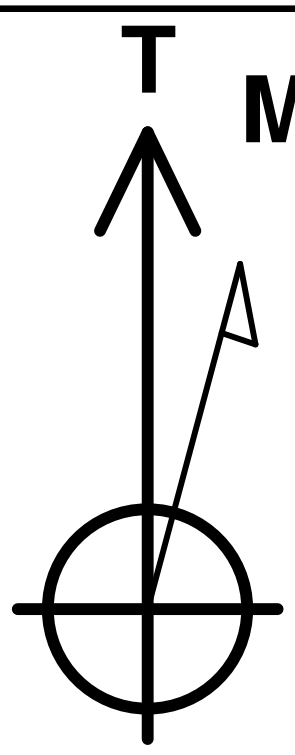
WELL DETAILS: Jesser 3E 10-11N

Ground Elevation:: 5111.0  
RKB Elevation: KB=29 @ 5140.0usft  
Rig Name:



	Northing	Easting	Latitude	Longitude
0.0	0.0	1367721.16	3140151.88	40° 20' 30.138 N 104° 59' 49.956 W

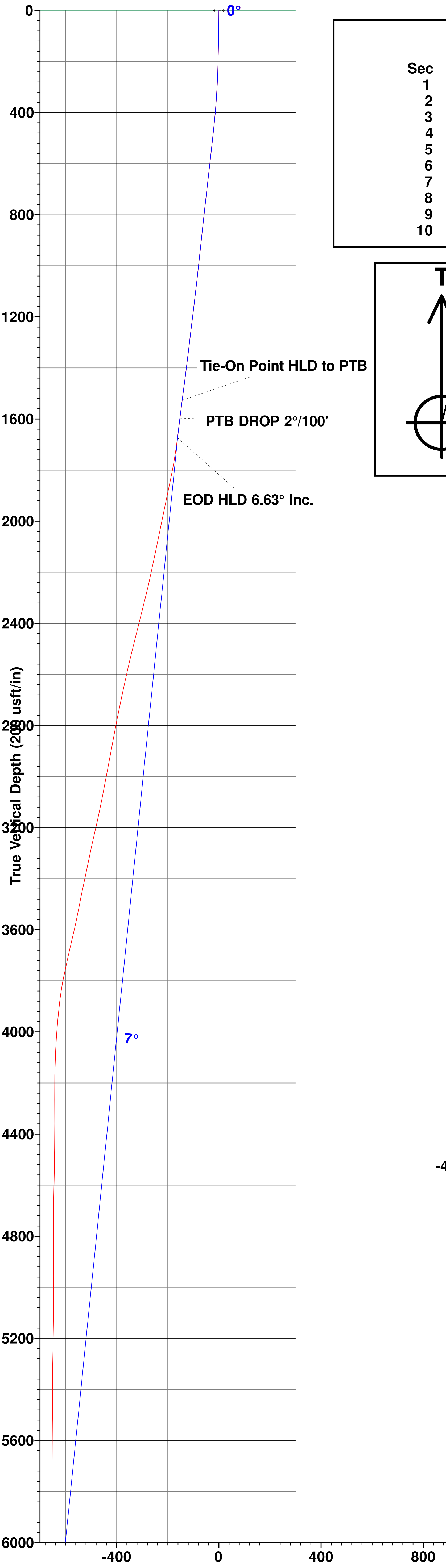
Planned Section Details									
Sec	MD	Inc	Azi	TVD	+N/-S	+E/-W	Dleg	TFace	VSect
1	1537.0	7.91	251.67	1526.5	-72.2	-148.2	0.00	0.00	-143.3
2	1608.0	7.91	251.67	1596.8	-75.3	-157.5	0.00	0.00	-152.3
3	1685.8	6.63	244.64	1674.0	-78.9	-166.6	2.00	-148.65	-161.2
4	6393.0	6.63	244.64	6349.7	-311.7	-657.8	0.00	0.00	-636.3
5	7353.2	90.00	89.34	6982.0	-335.8	-87.6	10.00	-155.15	-65.8
6	8350.7	90.00	89.34	6982.0	-324.4	909.8	0.00	0.00	928.8
7	8567.7	90.00	85.00	6982.0	-313.6	1126.5	2.00	-90.00	1144.4
8	8667.5	90.00	85.00	6982.0	-304.9	1225.9	0.00	0.00	1243.0
9	8907.5	90.00	89.80	6982.0	-294.1	1465.5	2.00	90.00	1481.4
10	11831.8	90.00	89.80	6982.0	-283.8	4389.8	0.00	0.00	4399.0



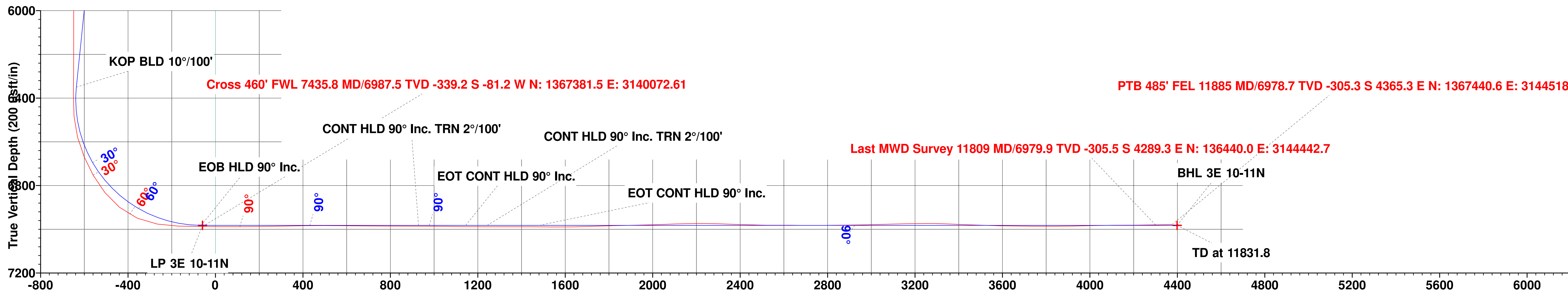
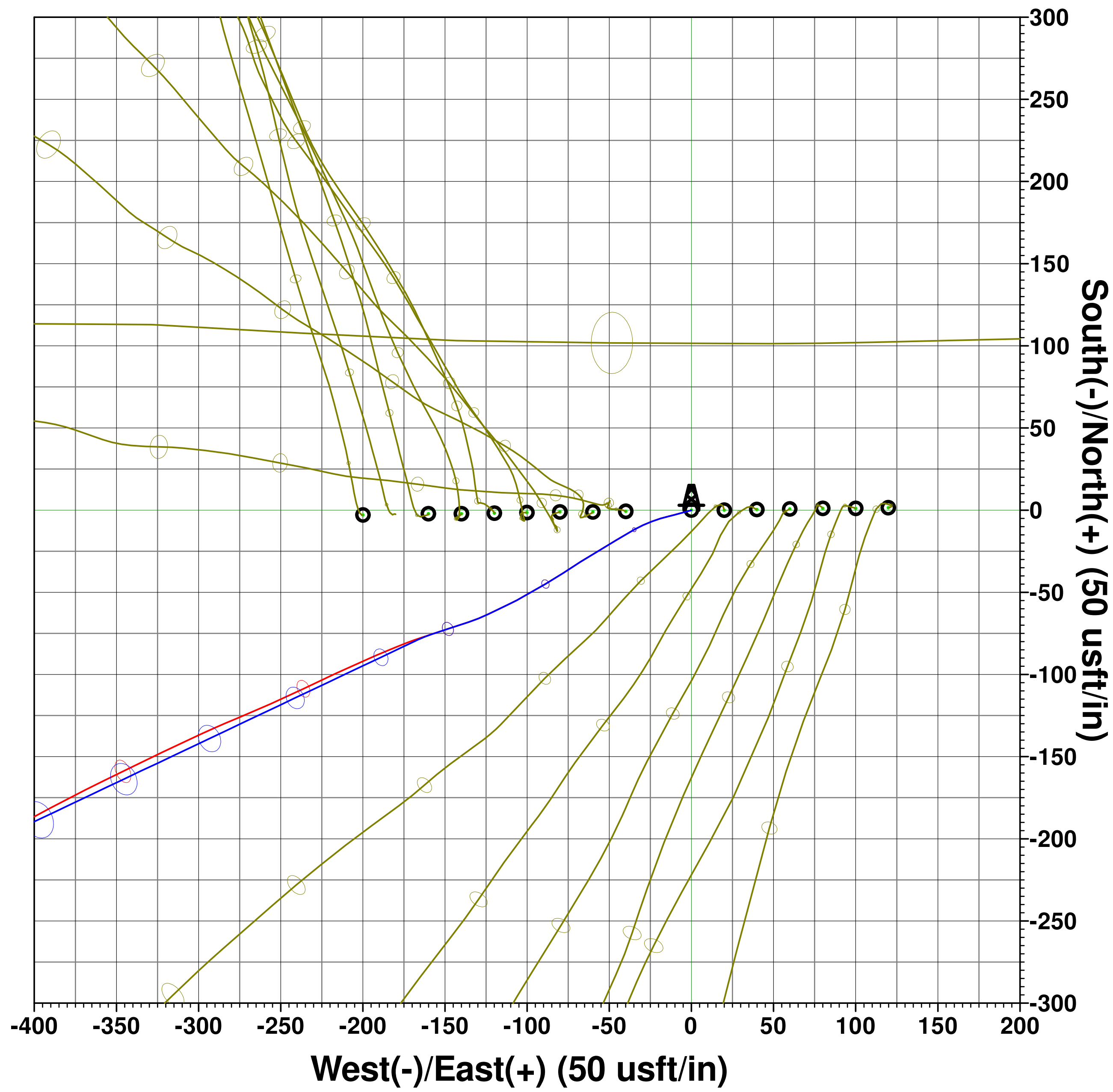
Mazimuths to True North  
Magnetic North: 8.28°

Magnetic Field  
Strength: 52281.3snT  
Dip Angle: 66.76°  
Date: 12/6/2017  
Model: IGRF2015

PROJECT DETAILS: WELD COUNTY, COLORADO (NAD 83)  
Geodetic System: US State Plane 1983  
Datum: North American Datum 1983  
Ellipsoid: GRS 1980  
Zone: Colorado Northern Zone  
System Datum: Mean Sea Level  
Local North: True



Vertical Section at 93.70° (200 usft/in)



Vertical Section at 93.70° (200 usft/in)

