

# HALLIBURTON

iCem<sup>®</sup> Service

## **EXTRACTION OIL & GAS-EBUS**

Date: Thursday, November 16, 2017

### **Jesser 3E-10-11N Surface**

Job Date: Saturday, November 04, 2017

Sincerely,

**Justin Lansdale**

## Legal Notice

---

### Warning Disclaimer

Although the information contained in this report is based on sound engineering practices, the copyright owner(s) does (do) not accept any responsibility whatsoever, in negligence or otherwise, for any loss or damage arising from the possession or use of the report whether in terms of correctness or otherwise. The application, therefore, by the user of this report or any part thereof, is solely at the user's own risk.

### Limitations of Liability

Except as expressly set forth herein, there are no representations or warranties by Halliburton, express or implied, including implied warranties of merchantability and/or fitness for a particular purpose. In no event will Halliburton or its suppliers be liable for consequential, incidental, special, punitive or exemplary damages (including, without limitation, loss of data, profits, use of hardware, or software). Customer accepts full responsibility for any investment made based on results from the Software. Any interpretations, analyses or modeling of any data, including, but not limited to Customer data, and any recommendation or decisions based upon such interpretations, analyses or modeling are opinions based upon inferences from measurements and empirical relationships and assumptions, which inferences and assumptions are not infallible, and with respect to which professional may differ. Accordingly, Halliburton cannot and does not warrant the accuracy, correctness or completeness of any such interpretation, recommendation, modeling or other products of the Software Product. As such, any interpretation, recommendation or modeling resulting from the Software for the purpose of any drilling, well treatment, production or financial decision will be at the sole risk of Customer. Under no circumstances will Halliburton or its suppliers be liable for any damages.

Table of Contents

---

1.0    Cementing Job Summary ..... 4

    1.1    Executive Summary .....4

2.0    Real-Time Job Summary ..... 7

    2.1    Job Event Log .....7

3.0    Attachments..... 9

    3.1    Job Chart.....9

    3.2    Jesser 3E-10-11N-Custom Results (1).png.....10

## 1.0 Cementing Job Summary

---

### 1.1 Executive Summary

---

Halliburton appreciates the opportunity to perform the cementing services on the **Jesser 3E-10-11N** cement **Surface** casing job. A pre-job safety meeting was held before the job where details of the job were discussed, potential safety hazards were reviewed, and environmental compliance procedures were outlined.

Halliburton maintains a continuous quality improvement process and appreciates any comments or suggestions that you may have. Halliburton again thanks you for the opportunity to perform service work on this well. We hope to be your solutions provider for future projects.

Respectfully,

**Halliburton [Fort Lupton]**

The Road to Excellence Starts with Safety

Sold To #: 369404		Ship To #: 3830625		Quote #:		Sales Order #: 0904417424					
Customer: EXTRACTION OIL & GAS -				Customer Rep: Larry Siegel							
Well Name: JESSER			Well #: 3E-10-11N		API/UWI #: 05-123-45664-00						
Field: WATTENBERG		City (SAP): BERTHOUD		County/Parish: WELD		State: COLORADO					
Legal Description: NW SW-3-4N-68W-2314FSL-556FWL											
Contractor: PATTERSON-UTI ENERGY				Rig/Platform Name/Num: PATTERSON 341							
Job BOM: 7521 7521											
Well Type: HORIZONTAL OIL											
Sales Person: HALAMERICA\HX38199				Srv Supervisor: Steven Markovich							
Job											
Formation Name											
Formation Depth (MD)		Top		Bottom							
Form Type				BHST							
Job depth MD		1584ft		Job Depth TVD							
Water Depth				Wk Ht Above Floor							
Perforation Depth (MD)		From		To							
Well Data											
Description	New / Used	Size in	ID in	Weight lbm/ft	Thread	Grade	Top MD ft	Bottom MD ft	Top TVD ft	Bottom TVD ft	
Casing	0	9.625	8.921	36	8 RD	J-55	0	1584	0	0	
Open Hole Section			13.5				0	1600	0	1600	
Tools and Accessories											
Type	Size in	Qty	Make	Depth ft		Type	Size in	Qty	Make		
Guide Shoe	9.625			1584		Top Plug	9.625		HES		
Float Shoe	9.625					Bottom Plug	9.625		HES		
Float Collar	9.625					SSR plug set	9.625		HES		
Insert Float	9.625					Plug Container	9.625		HES		
Stage Tool	9.625					Centralizers	9.625		HES		
Fluid Data											
Stage/Plug #: 1											
Fluid #	Stage Type	Fluid Name			Qty	Qty UoM	Mixing Density lbm/gal	Yield ft3/sack	Mix Fluid Gal	Rate bbl/min	Total Mix Fluid Gal
1	Red Dye Spacer	Red Dye Spacer			10	bbl	8.33				
Fluid #	Stage Type	Fluid Name			Qty	Qty UoM	Mixing Density lbm/gal	Yield ft3/sack	Mix Fluid Gal	Rate bbl/min	Total Mix Fluid Gal
2	SwiftCem	SWIFTCM (TM) SYSTEM			550	sack	13.5	1.74		5	9.2
9.20 Gal		FRESH WATER									

Fluid #	Stage Type	Fluid Name	Qty	Qty UoM	Mixing Density lbm/gal	Yield ft3/sack	Mix Fluid Gal	Rate bbl/min	Total Mix Fluid Gal
3	Fresh Water	Fresh Water	119	bbl	8.33				
Cement Left In Pipe		Amount	44 ft		Reason			Shoe Joint	
Mix Water:		pH ##	Mix Water Chloride:## ppm			Mix Water Temperature:## °F °C			
Cement Temperature:## °F °C		Plug Displaced by:## lb/gal kg/m3 XXXX			Disp. Temperature:## °F °C				
Plug Bumped?		Yes/No	Bump Pressure:#### psi MPa			Floats Held?		Yes/No	
Cement Returns:## bbl m3		Returns Density:## lb/gal kg/m3			Returns Temperature:## °F °C				
<b>Comment</b> Cement to surface at 90bbls away bringing 29bbls of cement to surface.									

## 2.0 Real-Time Job Summary

## 2.1 Job Event Log

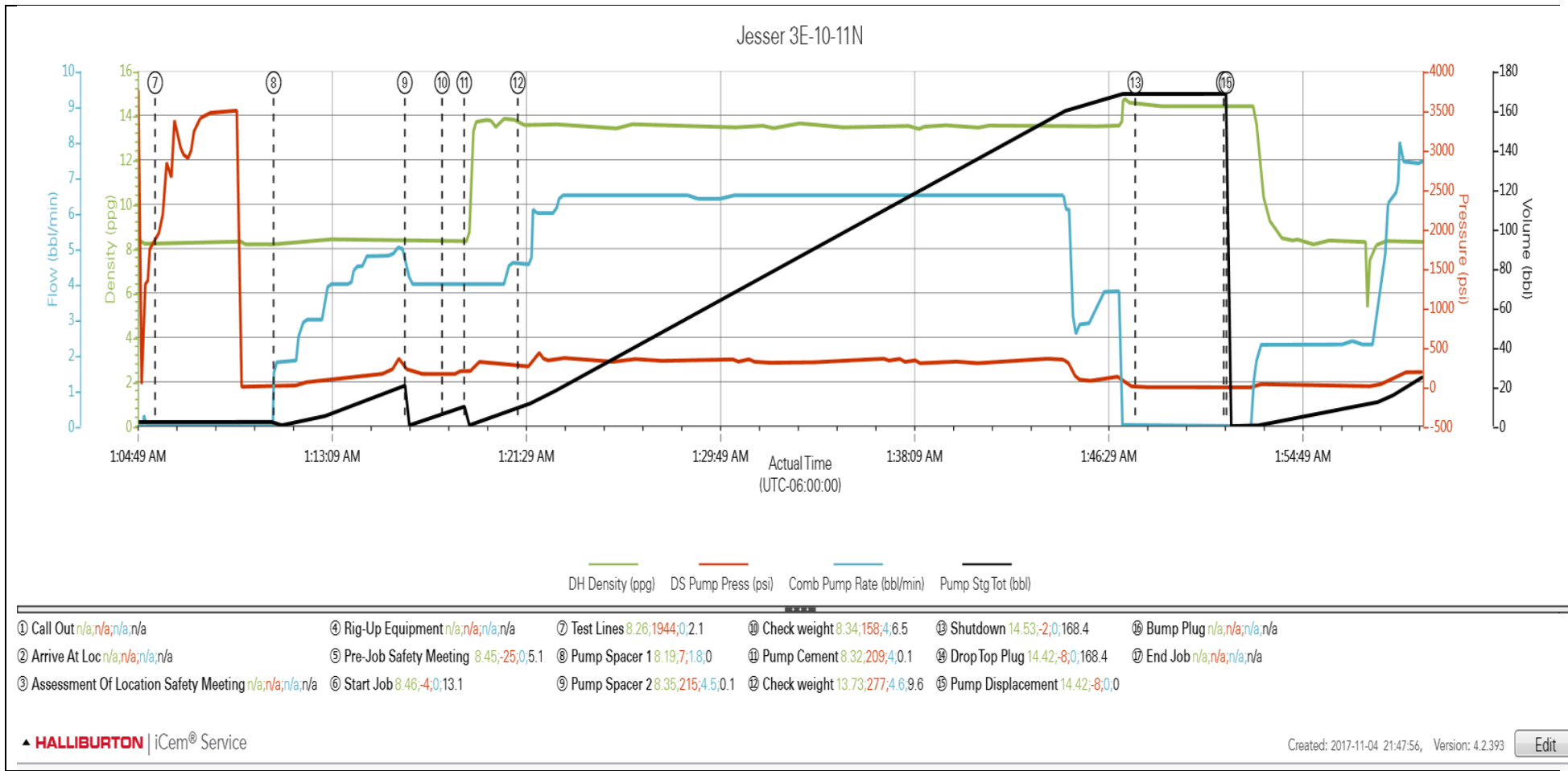
Type	Seq. No.	Activity	Graph Label	Date	Time	Source	Comments
Event	1	Call Out	Call Out	11/4/2017	11:30:00	USER	Job called out with an on location time of 20:30
Event	2	Arrive At Loc	Arrive At Loc	11/4/2017	19:00:00	USER	Arrived on location rig was still drilling.
Event	3	Assessment Of Location Safety Meeting	Assessment Of Location Safety Meeting	11/4/2017	19:15:00	USER	JSA and hazard hunt with HES crew.
Event	4	Rig-Up Equipment	Rig-Up Equipment	11/4/2017	19:30:00	USER	Rigged up HES lines and equipment.
Event	5	Pre-Job Safety Meeting	Pre-Job Safety Meeting	11/5/2017	00:30:00	USER	JSA with HES and rig crew on job procedure.
Event	6	Start Job	Start Job	11/5/2017	00:56:08	COM4	TD 1600' TP 1584' FC 1542' 9 5/8" 36# surface casing, 13 1/2" openhole.
Event	7	Test Lines	Test Lines	11/5/2017	01:05:40	COM4	Set kick outs to 500psi for kick out test then bring pressure up to 3000psi and hold.
Event	8	Pump Spacer 1	Pump Spacer 1	11/5/2017	01:10:45	COM4	Break circulation. Circulation achieved at 20bbls away.
Event	9	Pump Spacer 2	Pump Spacer 2	11/5/2017	01:16:23	COM4	Pump 10bbls of Red Dye
Event	10	Check Weight	Check weight	11/5/2017	01:17:59	COM4	Weight verified by pressurized scales.
Event	11	Pump Cement	Pump Cement	11/5/2017	01:18:56	COM4	Pump 170bbls (550sks) of 13.5ppg 1.74yield Cement. Pumped at 6.5bbl/min 373psi
Event	12	Check Weight	Check weight	11/5/2017	01:21:14	COM4	Weight verified by pressurized scales.
Event	13	Shutdown	Shutdown	11/5/2017	01:47:44	COM4	Shutdown
Event	14	Drop Top Plug	Drop Top Plug	11/5/2017	01:51:32	COM4	Plug pre loaded into HES head. Plug drop and loaded in front f company rep.

Event	15	Pump Displacement	Pump Displacement	11/5/2017	01:51:39	COM4	Pump 119bbls of H2O. Pumped at 8bbl/min and slowed down with pressure increase. Red Dye to surface at 73bbls away, cement to surface at 90bbls away bringing 29bbls of cement to surface.
Event	16	Bump Plug	Bump Plug	11/5/2017	02:15:00	COM4	Bumped plug at 119bbls away, final lifting pressure was 475 brought pressure 500psi over and held it. Opened the release line to check floats, after 1 bbl back floats held.
Event	17	End Job	End Job	11/5/2017	02:16:12	COM4	Thank you Steve Markovich and crew.



3.0 Attachments

3.1 Job Chart



3.2 Jesser 3E-10-11N-Custom Results (1).png

