

OPERATOR: **Extraction Oil & Gas**

WELL NAME: **Jesser 3E-10-11N**

FIELD NAME: DJ Basin - Wattenberg

DRILLING RIG: Patterson 901

API #: 05-123-45664

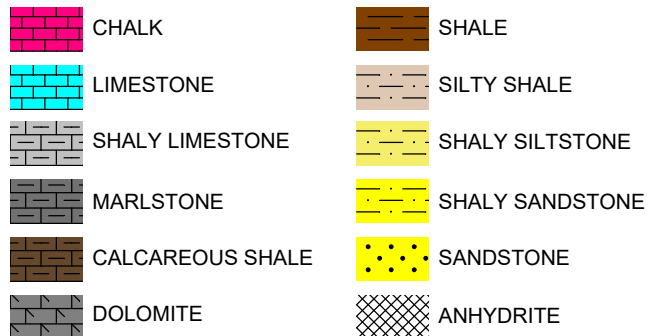
LAT/LONG: 40.341705, -104.99721  
SURFACE HOLE: NWSW S3-T4N-R68W, 2314' FSL, 556' FWL  
BOTTOM HOLE: S3-T4N-R68W, 1980' FSL, 460' FEL



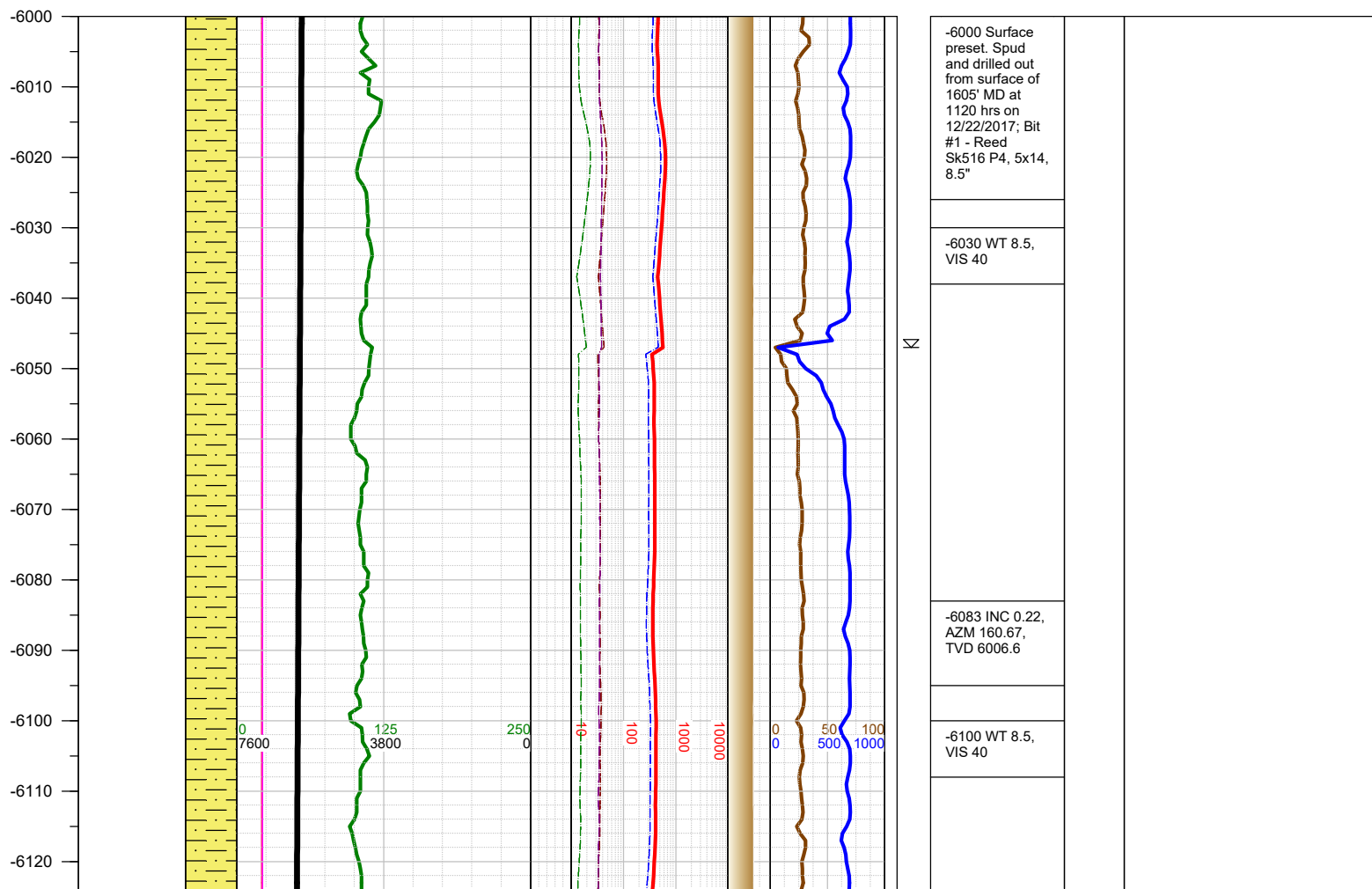
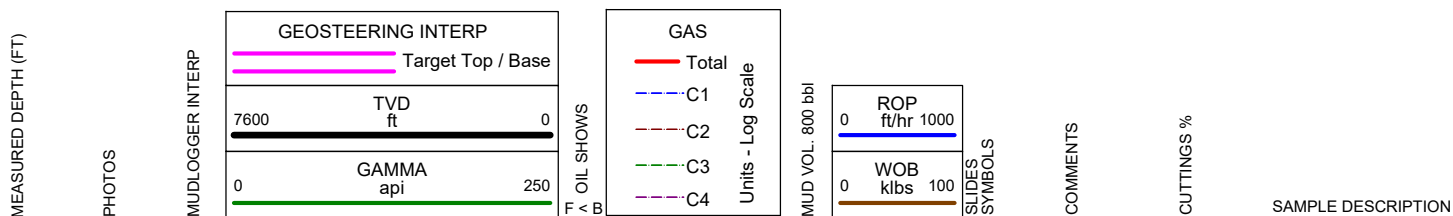
Earth Science Agency, LLC

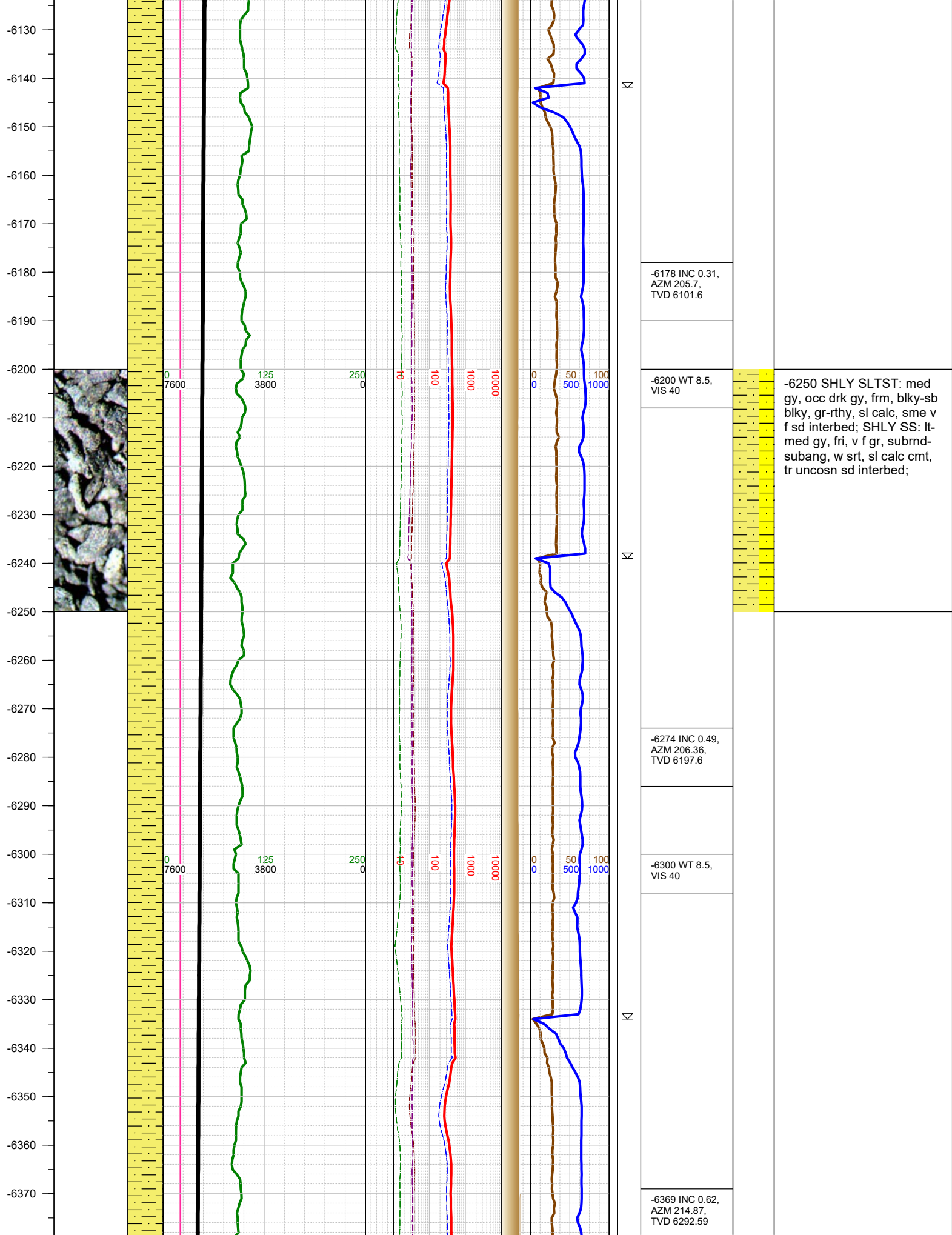
COUNTY: Weld  
STATE: Colorado  
GROUND ELEVATION: 5111'  
KELLY BUSHING: 5140'  
DRILLING FLUID: OBM  
TVD VS. MD: 6979' / 11885'  
SPUD DATE: December 22, 2017  
TD DATE: December 24, 2017  
  
DEPTHS LOGGED: 6000' - 11885'  
DATES LOGGED: December 22, 2017 - December 24, 2017  
GEOLOGISTS: Blake Eatherton, Dominic Pitre  
SCALE: 5" = 100'

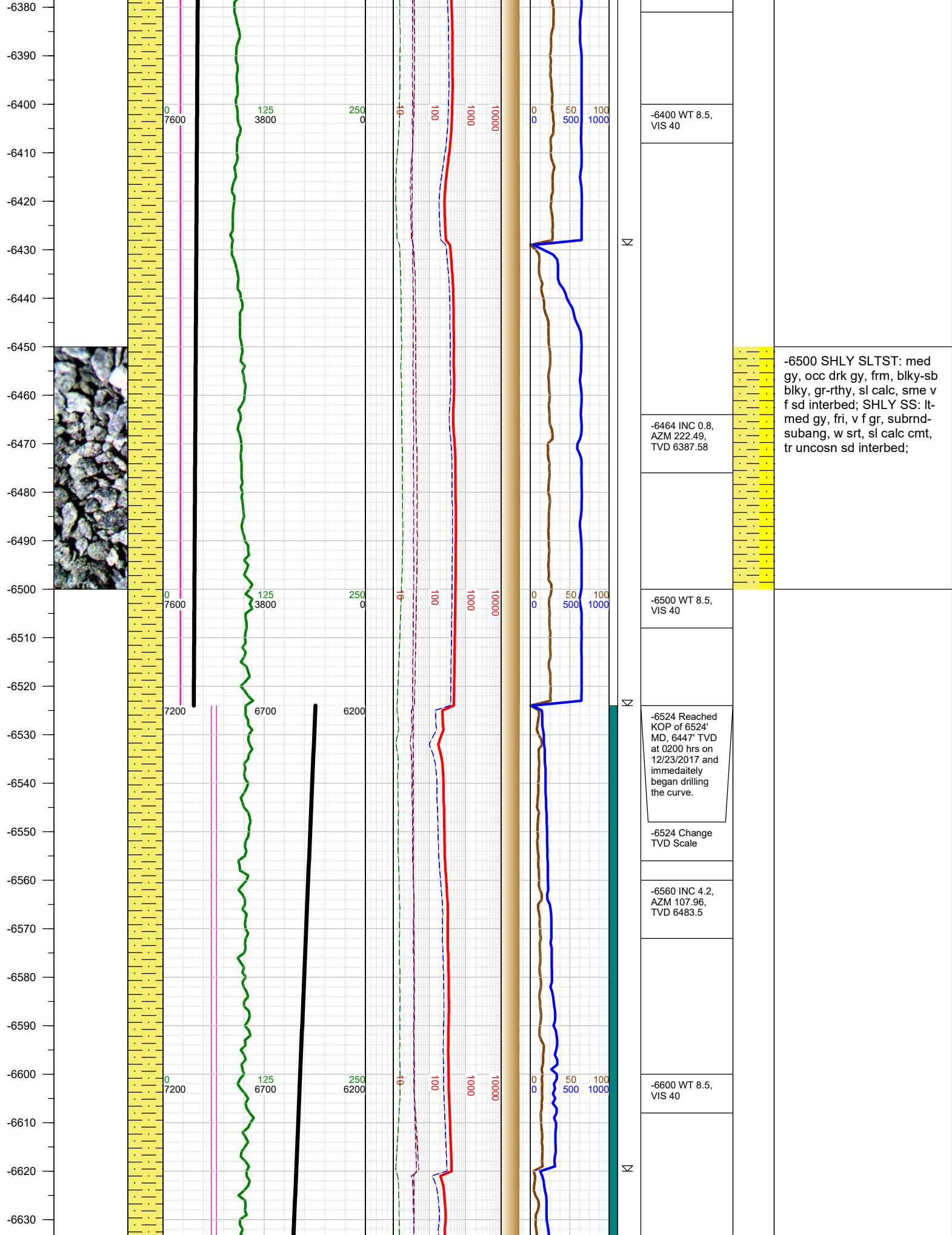
#### LEGEND

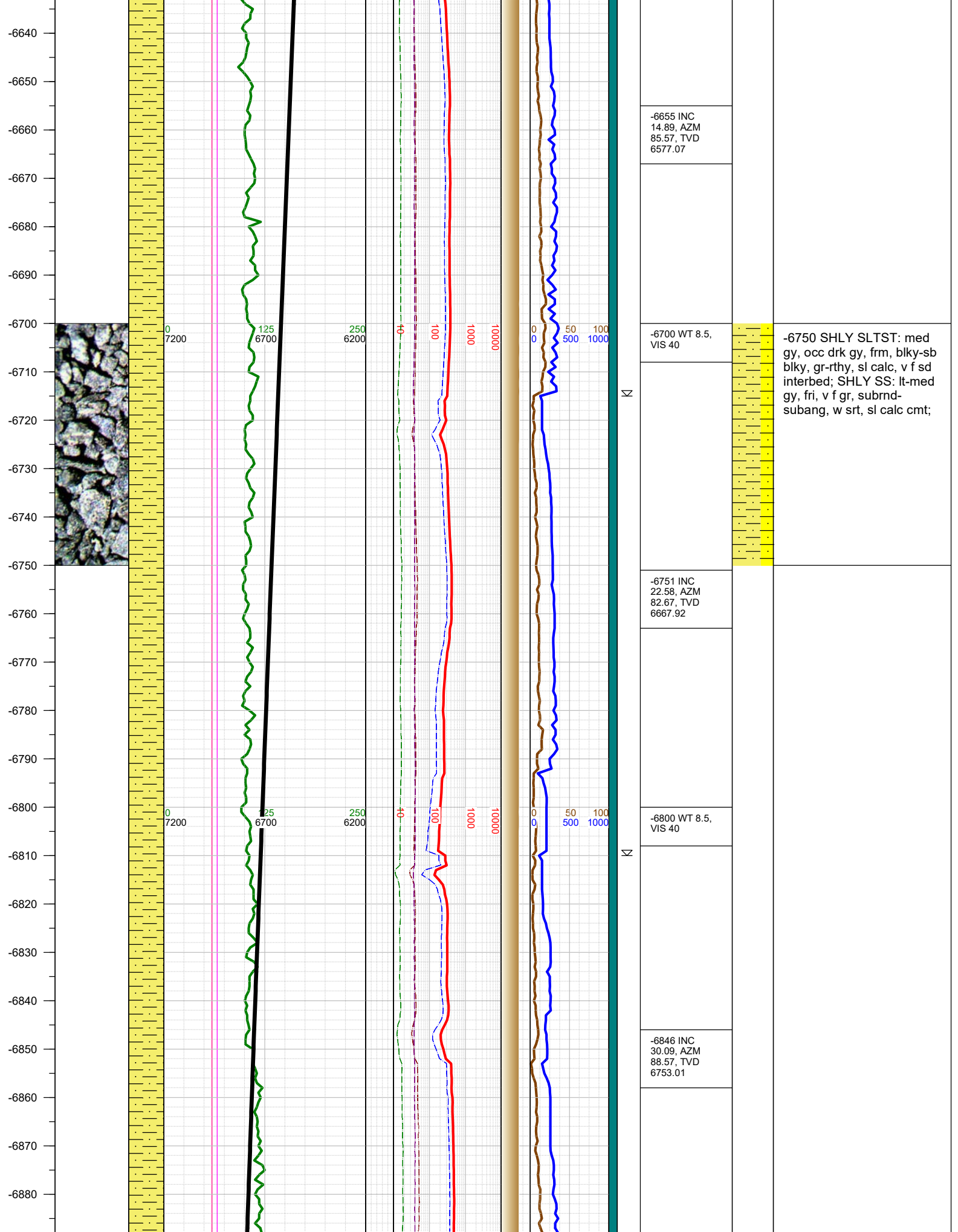


FORMATION  $\approx$  CONNECTION  $\Delta$  MIDNIGHT NEW BIT GAS SHOW FAULT

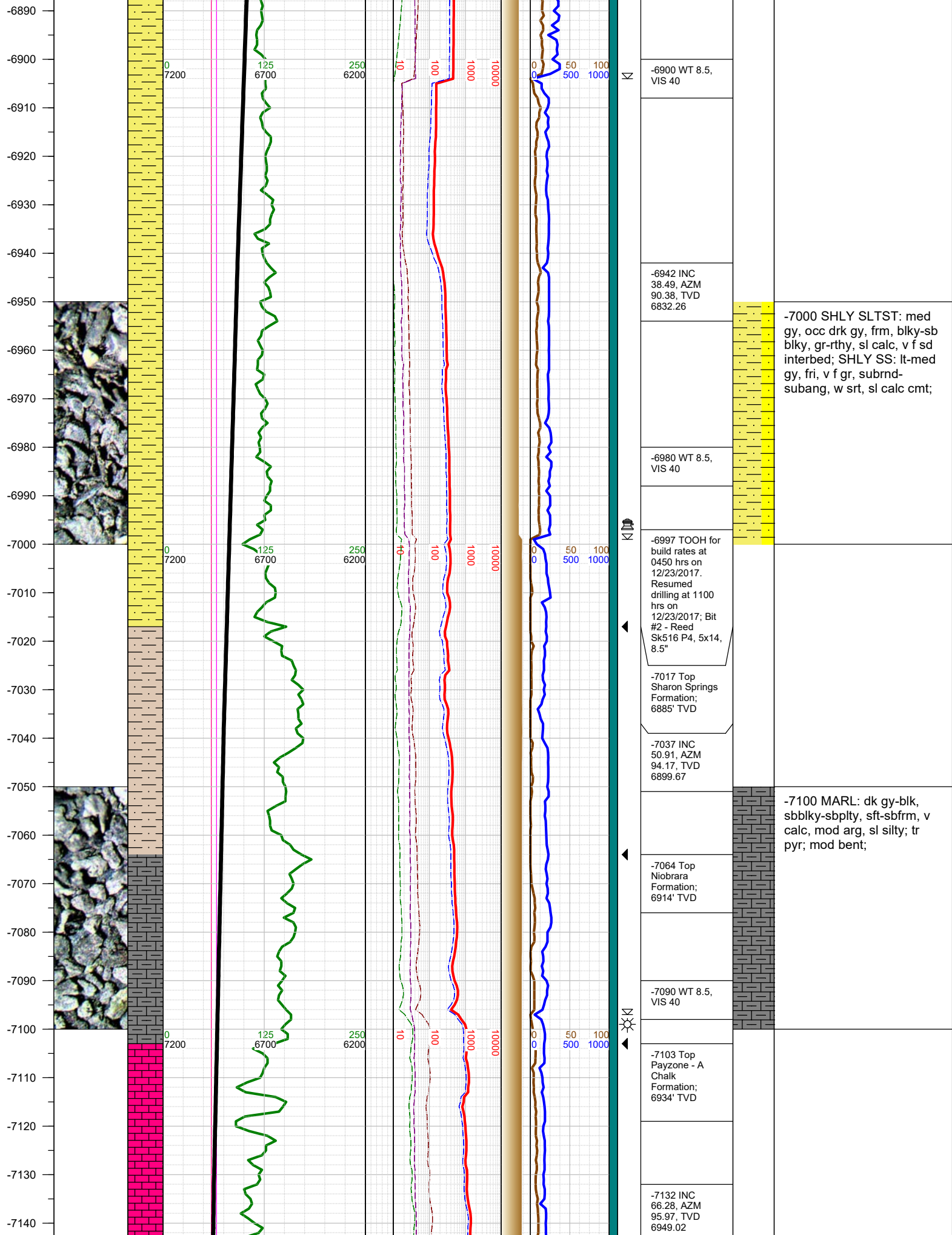


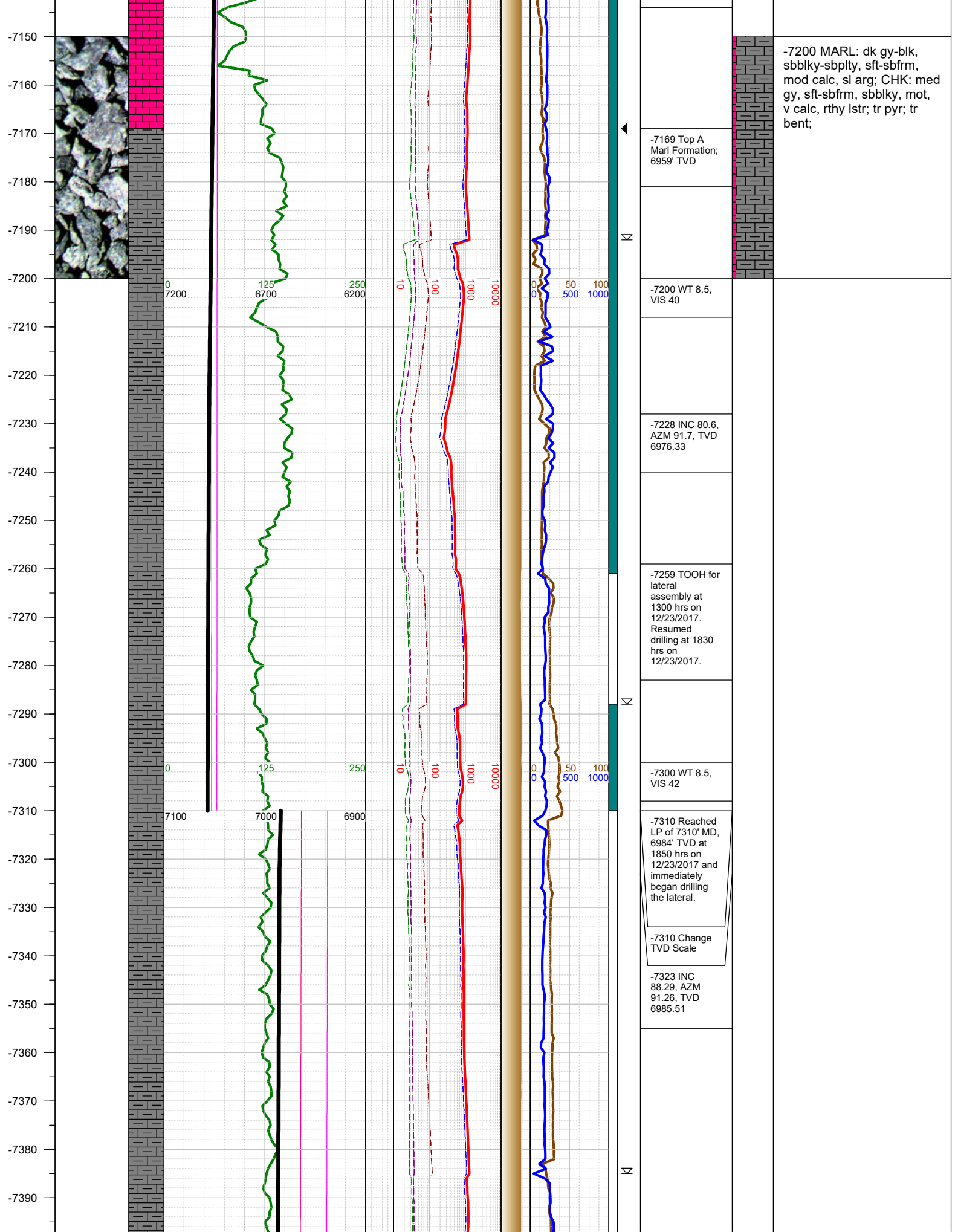


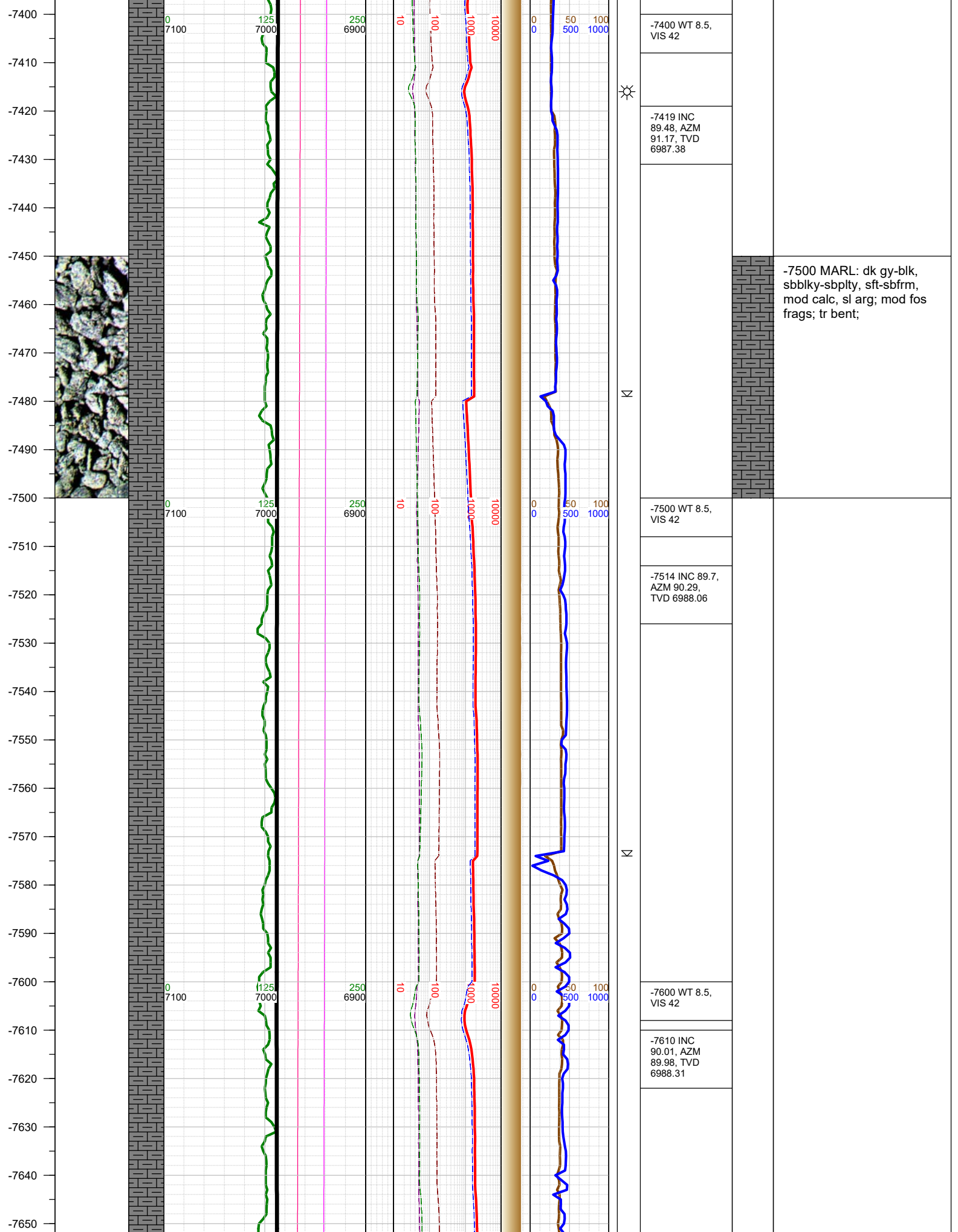




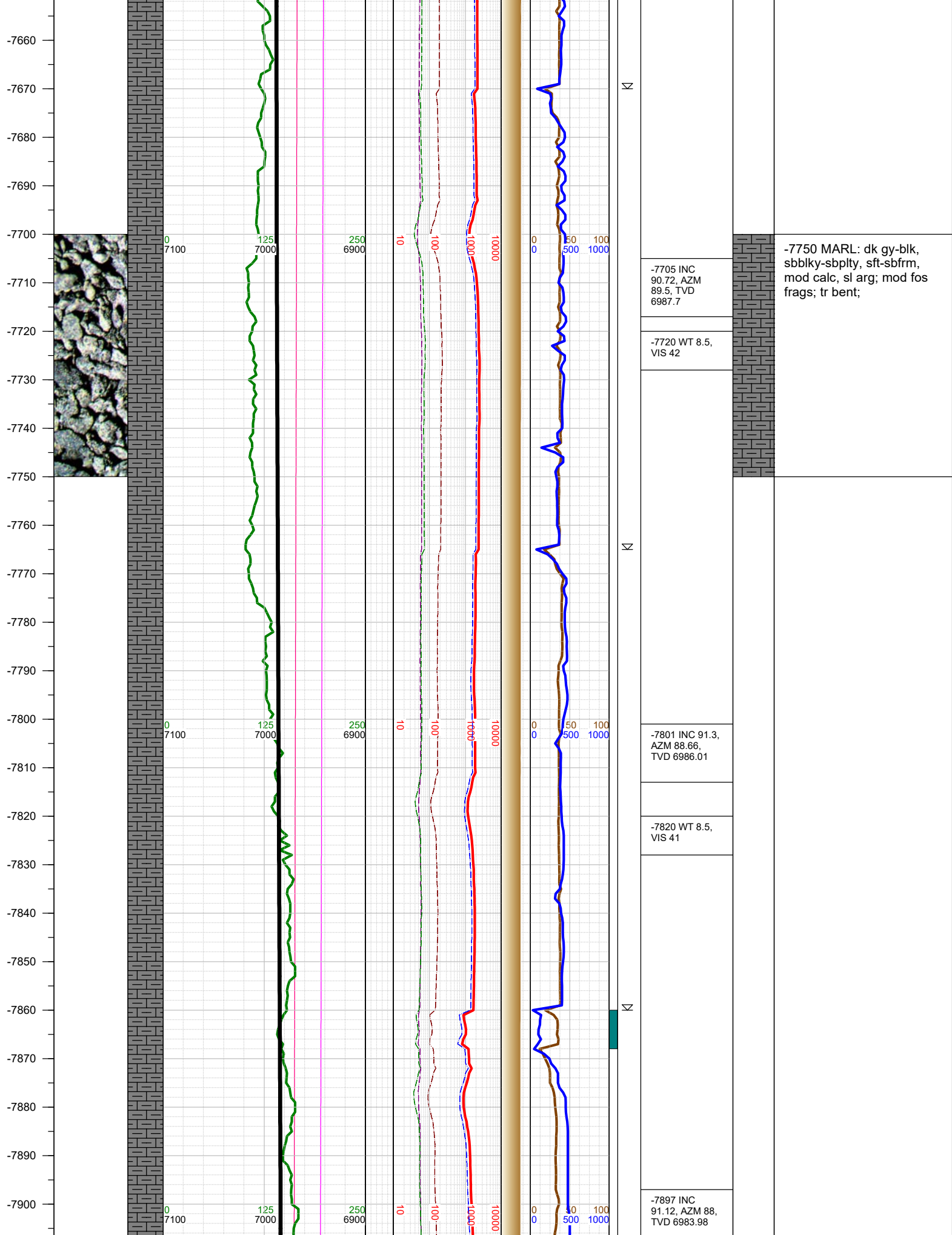




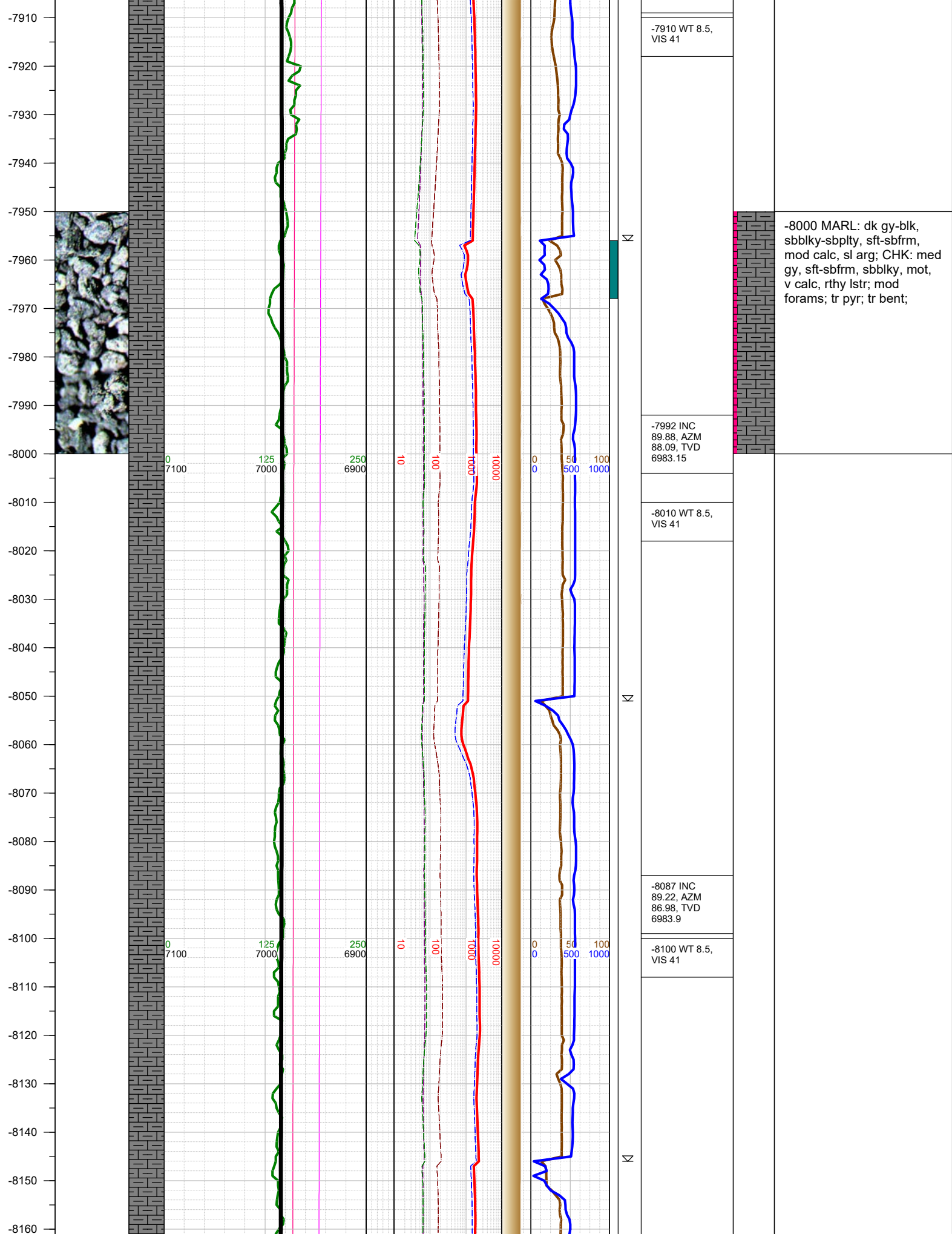


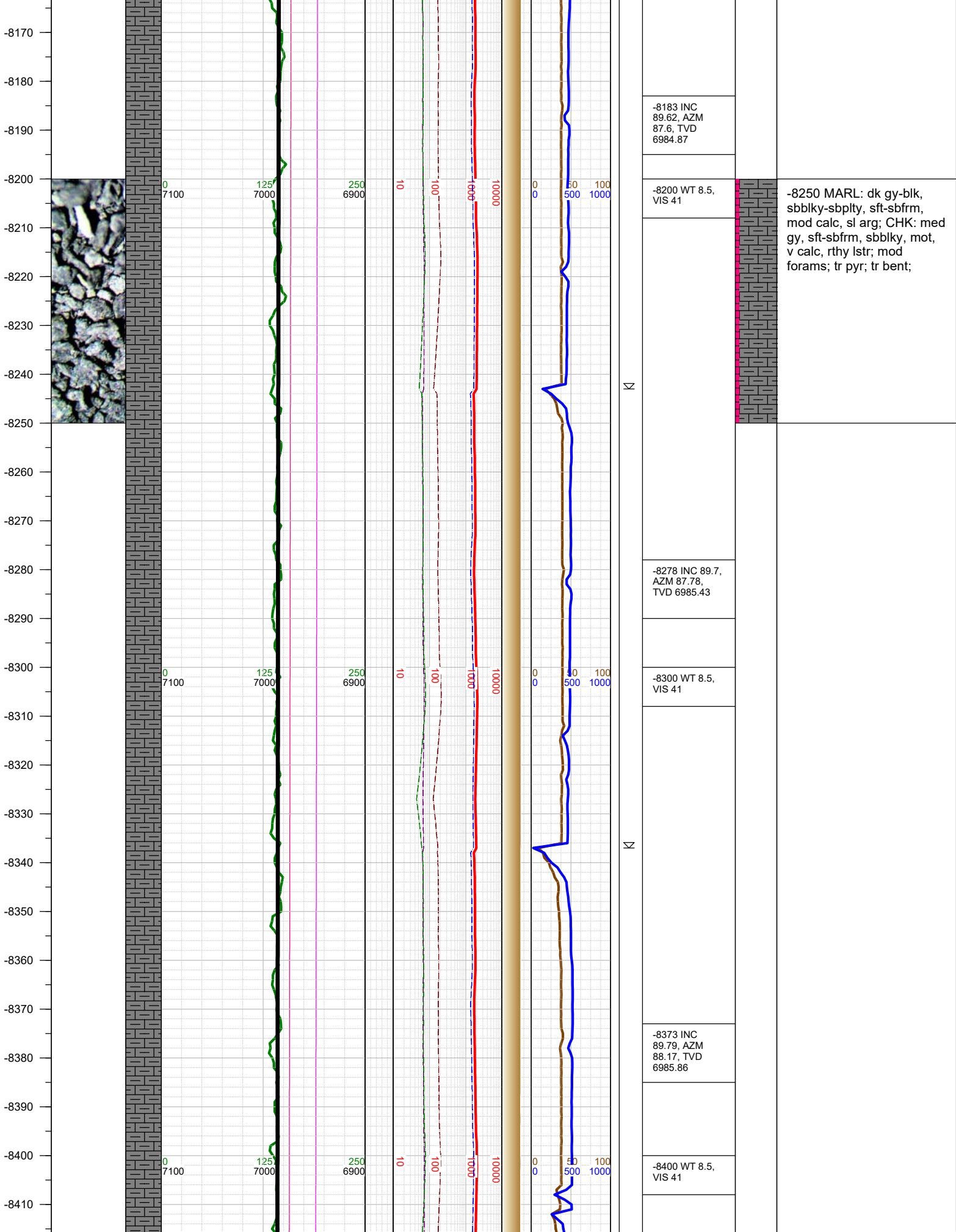




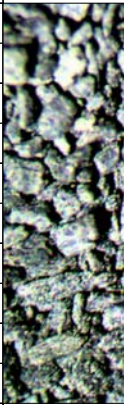








-8420  
-8430  
-8440  
-8450  
-8460  
-8470  
-8480  
-8490  
-8500  
-8510  
-8520  
-8530  
-8540  
-8550  
-8560  
-8570  
-8580  
-8590  
-8600  
-8610  
-8620  
-8630  
-8640  
-8650  
-8660  
-8670



0  
7100

125  
7000

250  
6900

10

100

1000

10000

0  
0

50  
500

100  
1000

N

N

N

-8469 INC 89.7,  
AZM 87.69,  
TVD 6986.28

-8500 WT 8.5,  
VIS 41

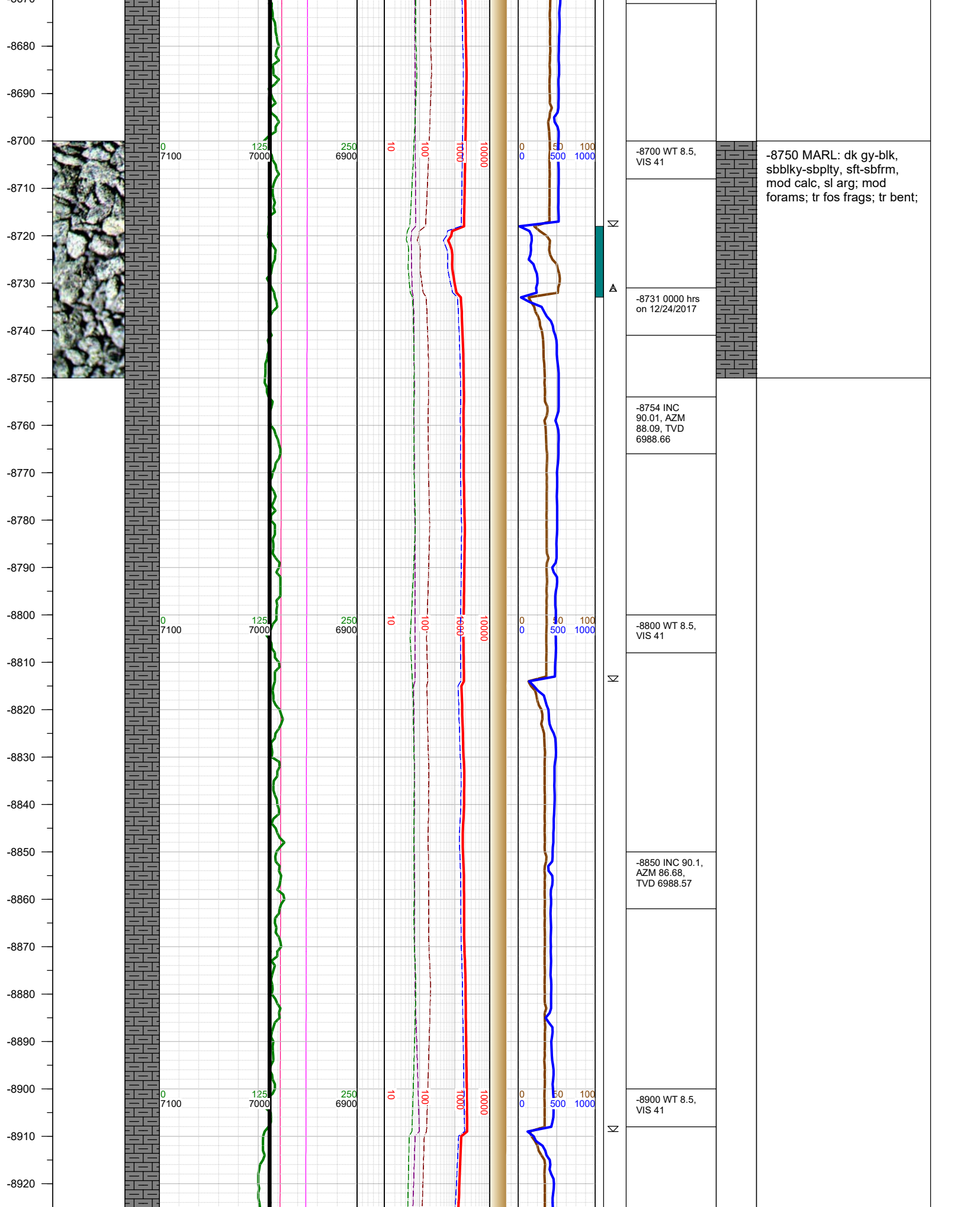
-8564 INC 89.4,  
AZM 85.88,  
TVD 6987.03

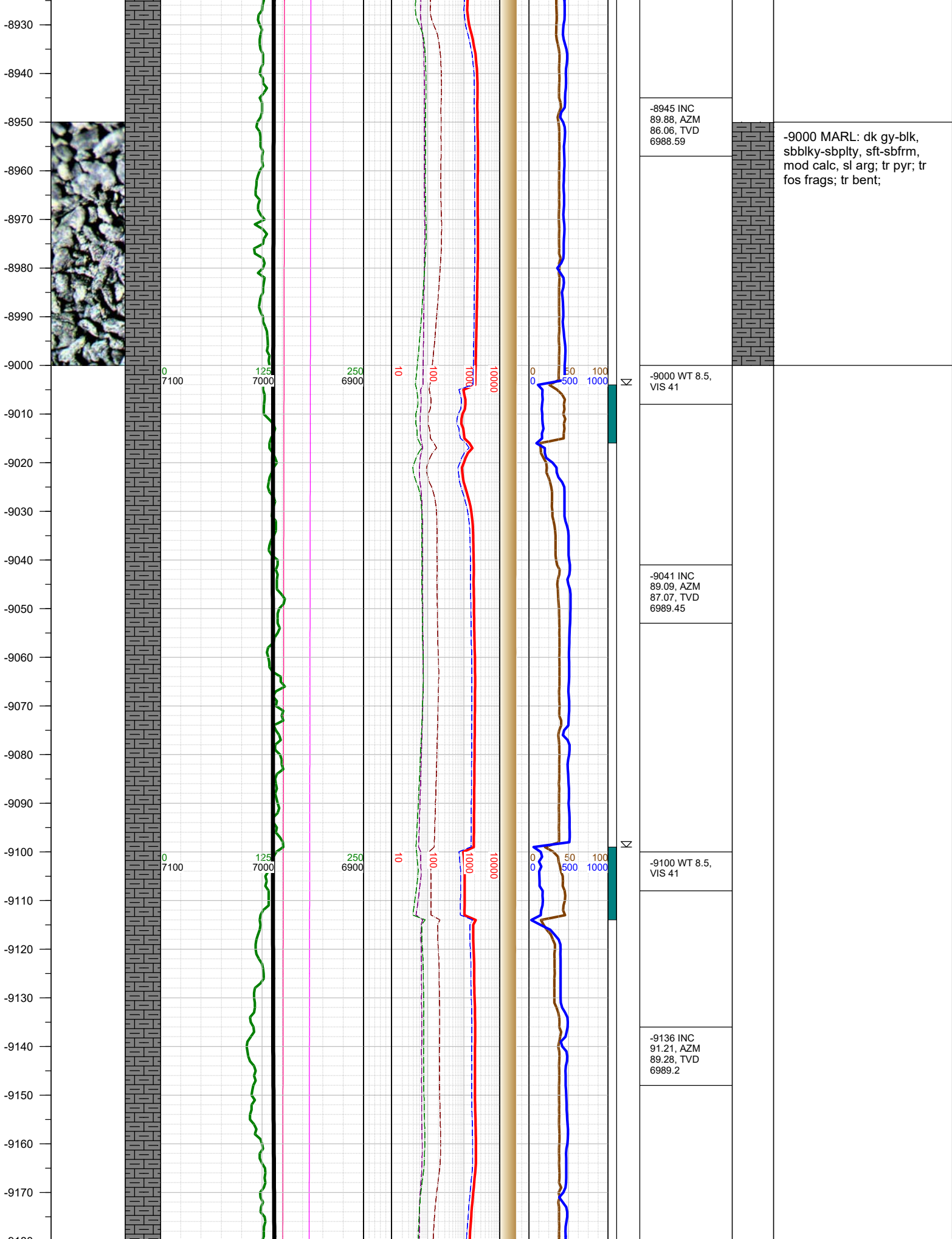
-8600 WT 8.5,  
VIS 41

-8659 INC  
89.31, AZM  
86.5, TVD  
6988.1

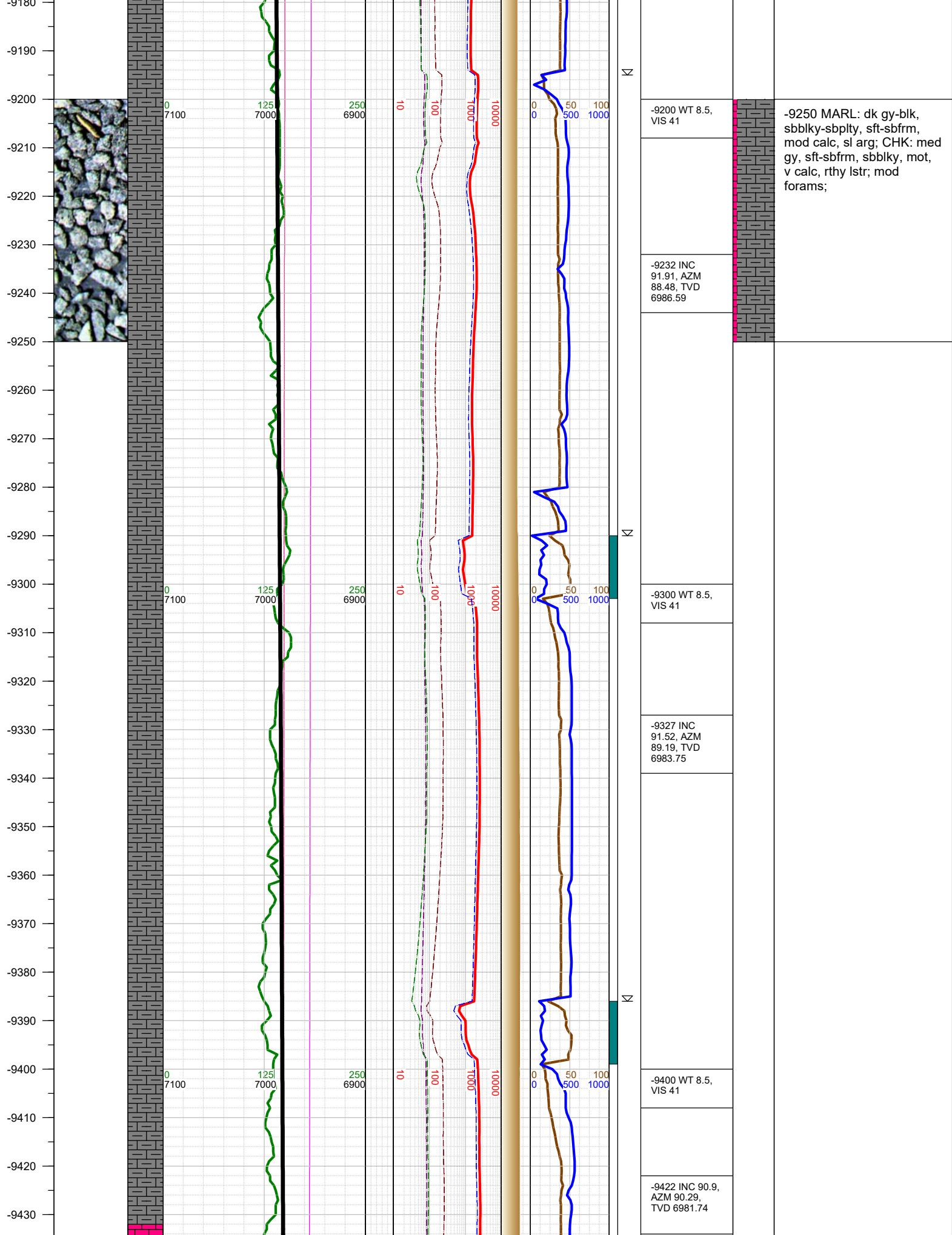
-8500 MARL: dk gy-blk,  
sbbky-sbply, sft-sbfrm,  
mod calc, sl arg; mod  
forams; tr fos frags; tr bent;





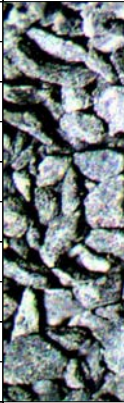


-9000 MARL: dk gy-blk, sbblky-sbplty, sft-sbfrm, mod calc, sl arg; tr pyr; tr fos frags; tr bent;





-9440  
-9450  
-9460  
-9470  
-9480  
-9490  
-9500  
-9510  
-9520  
-9530  
-9540  
-9550  
-9560  
-9570  
-9580  
-9590  
-9600  
-9610  
-9620  
-9630  
-9640  
-9650  
-9660  
-9670  
-9680



0  
7100

125  
7000

250  
6900

10

100

1000

10000

0  
0

50  
500

100  
1000

N

N



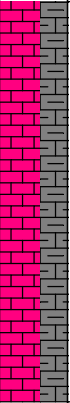
N

-9500 WT 8.5,  
VIS 41

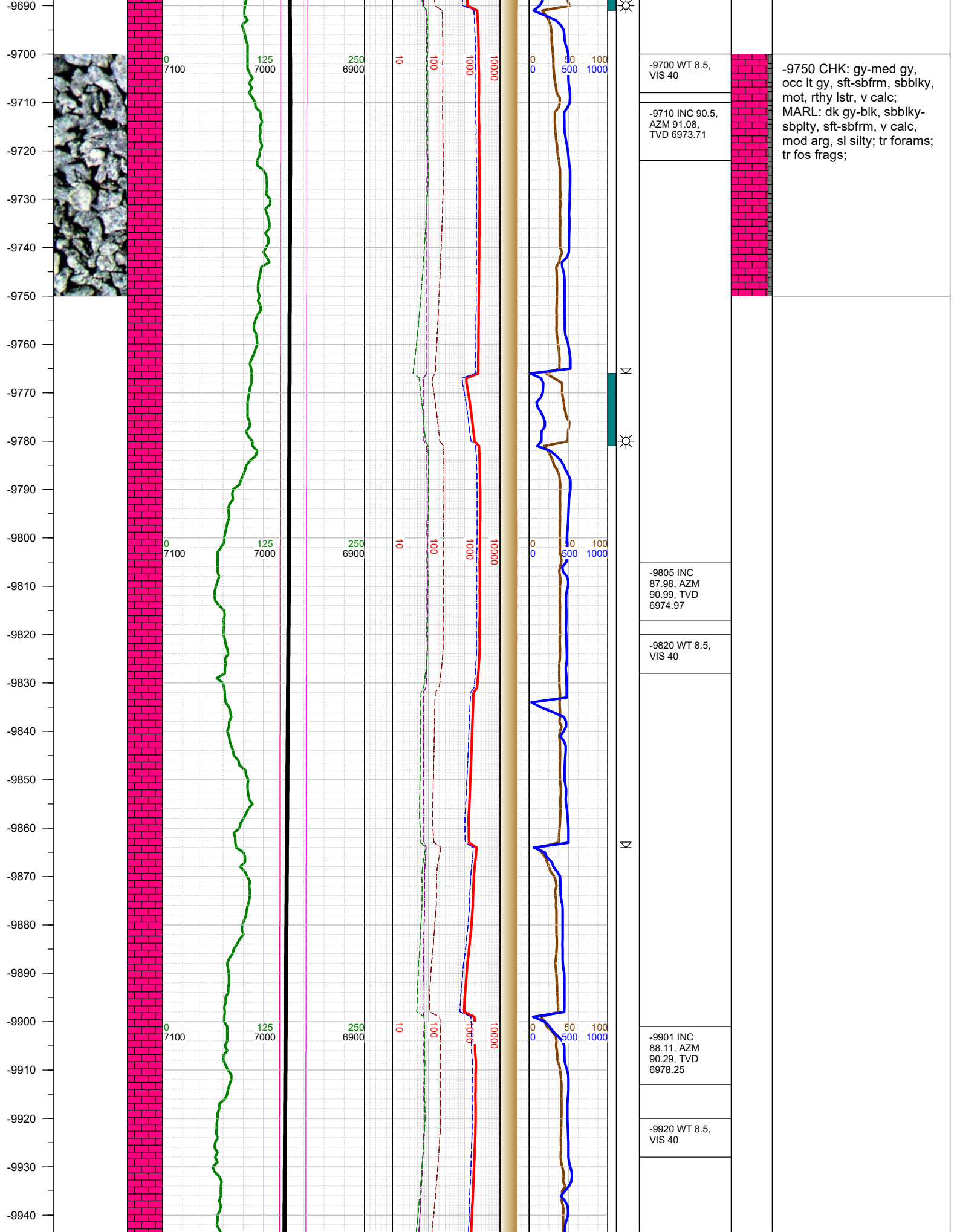
-9518 INC  
92.09, AZM  
89.89, TVD  
6979.23

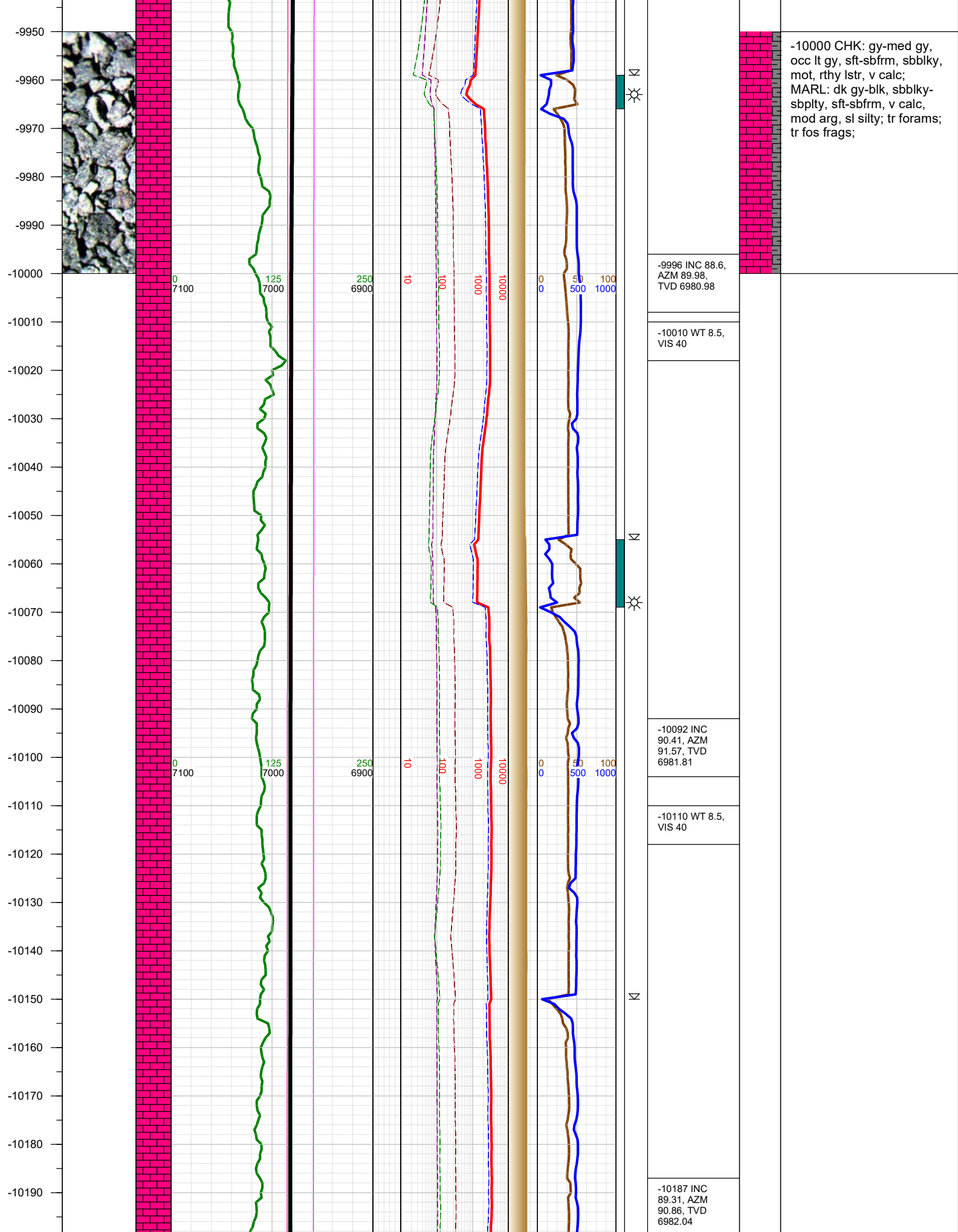
-9600 WT 8.5,  
VIS 41

-9614 INC 92,  
AZM 89.89,  
TVD 6975.81

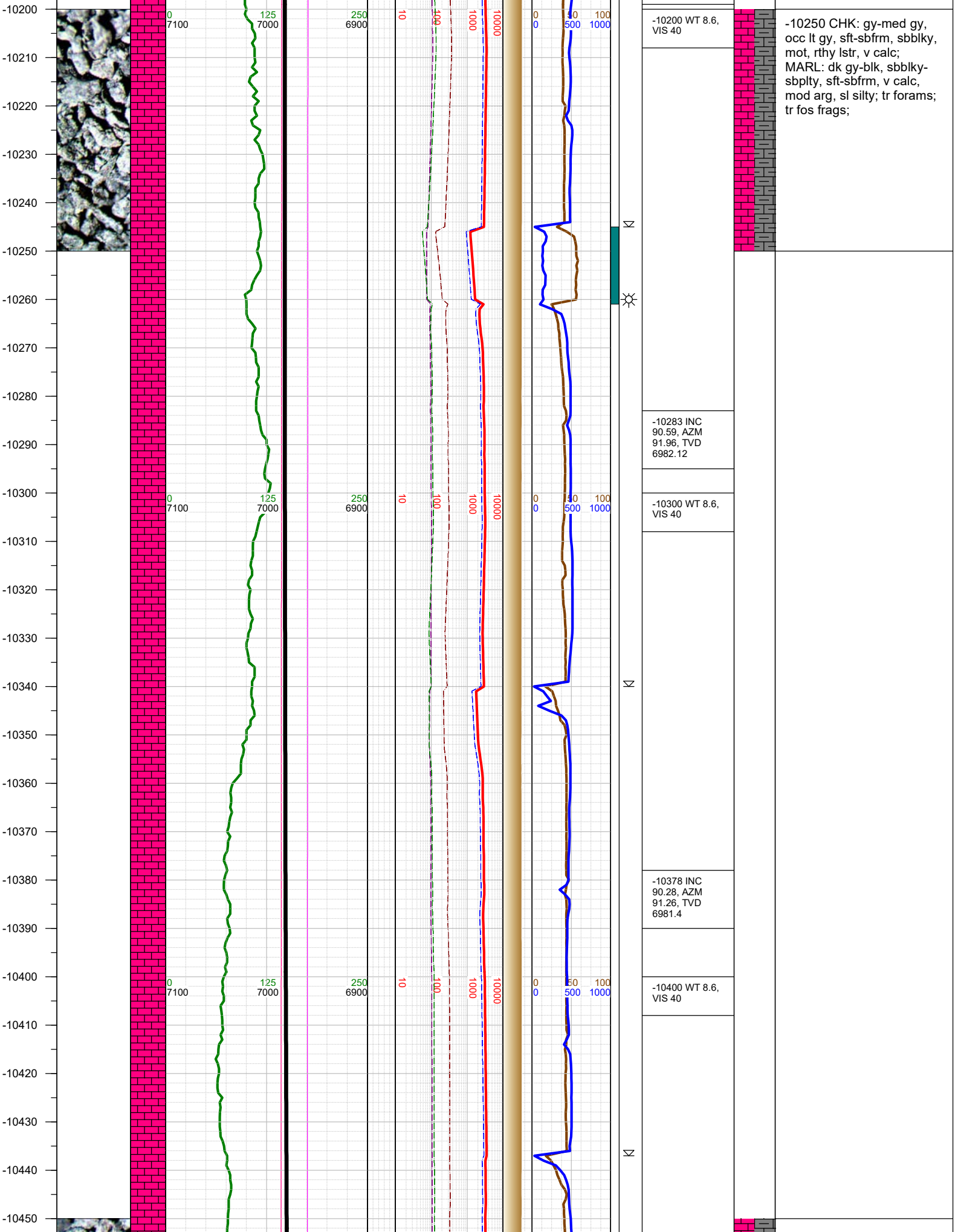


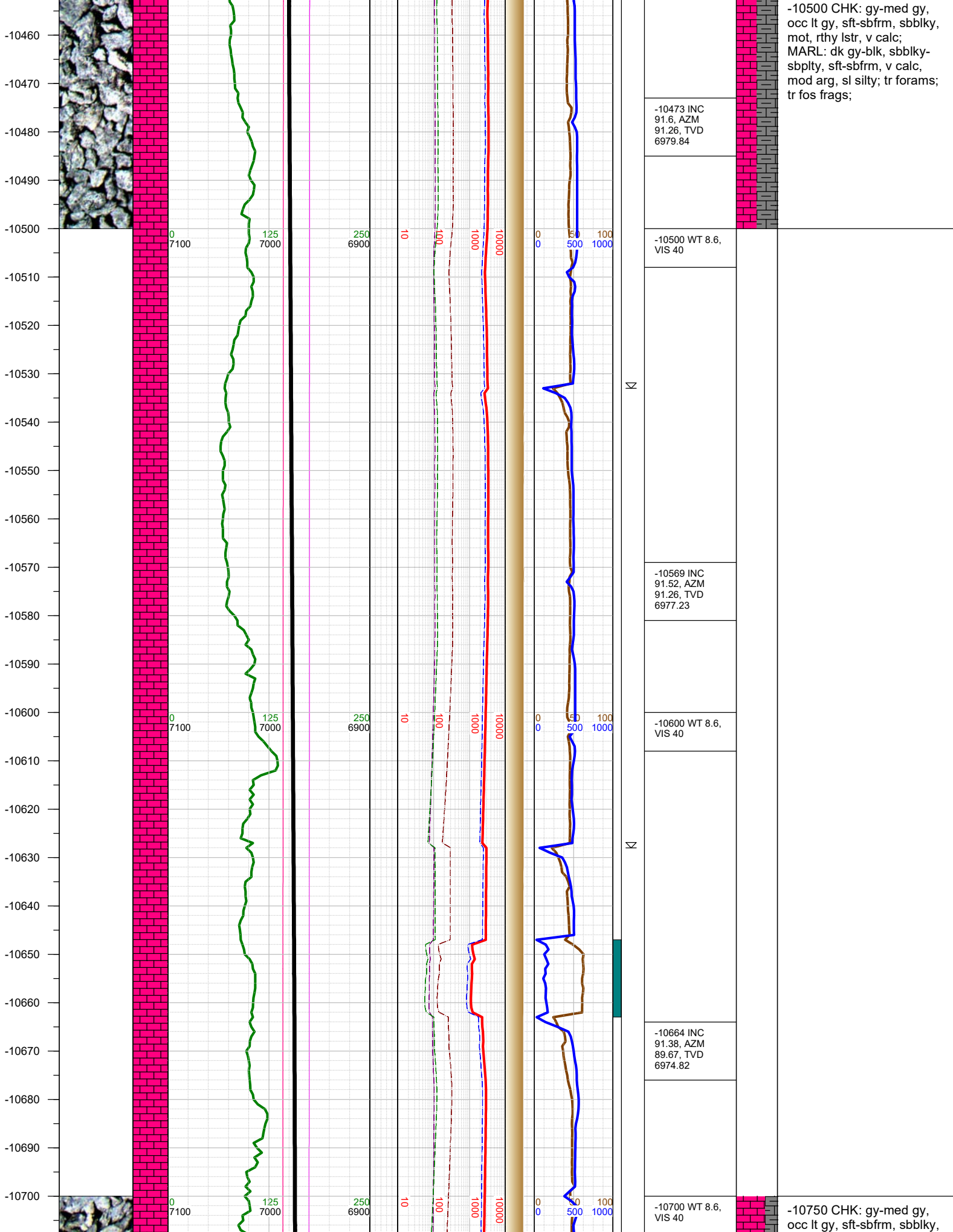
-9500 CHK: gy-med gy,  
occ lt gy, sft-sbfrm, sbblky,  
mot, rthy lstr, v calc;  
MARL: dk gy-blk, sbblky-  
sbplty, sft-sbfrm, v calc,  
mod arg, sl silty; tr pyr; tr  
forams; tr bent;

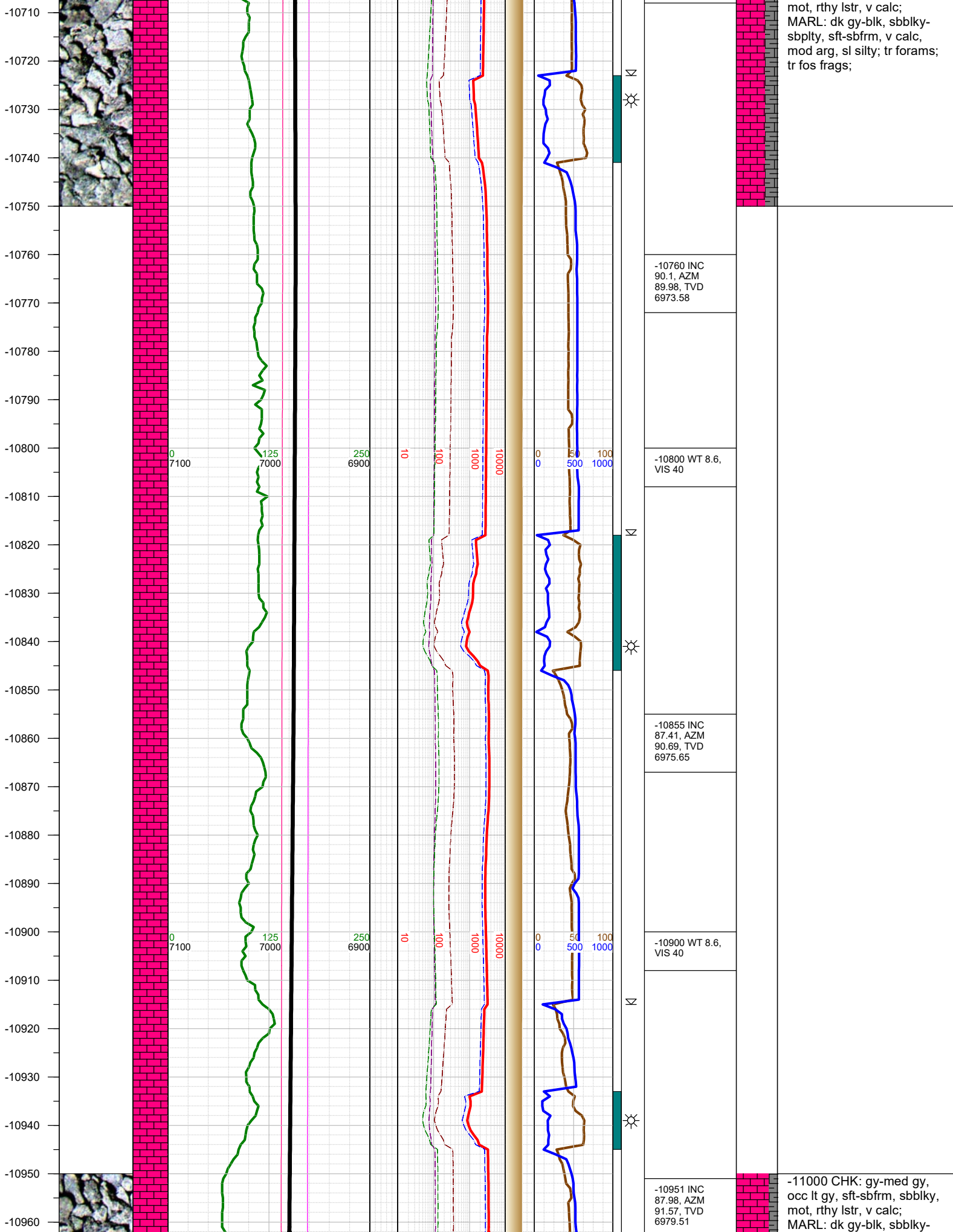




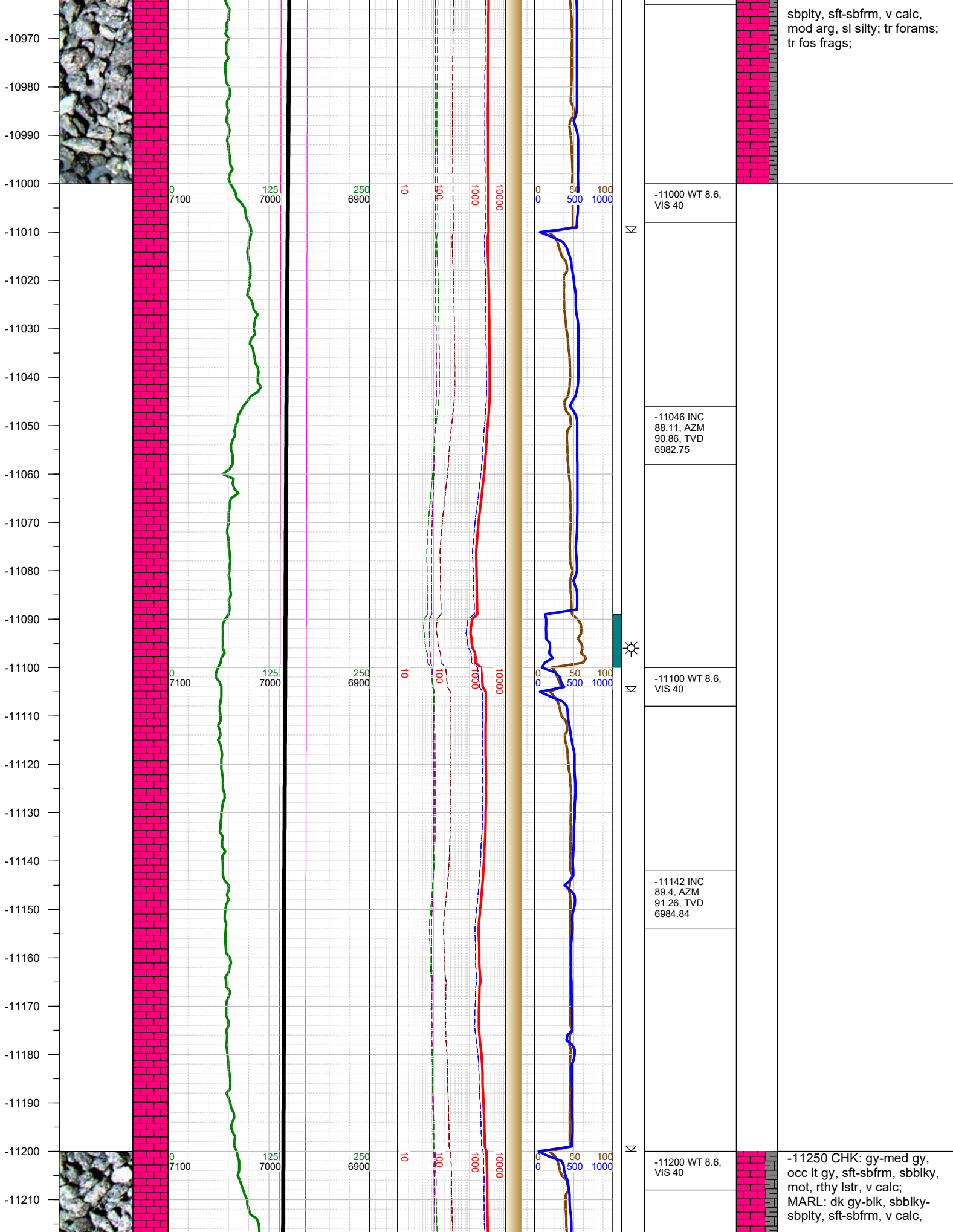


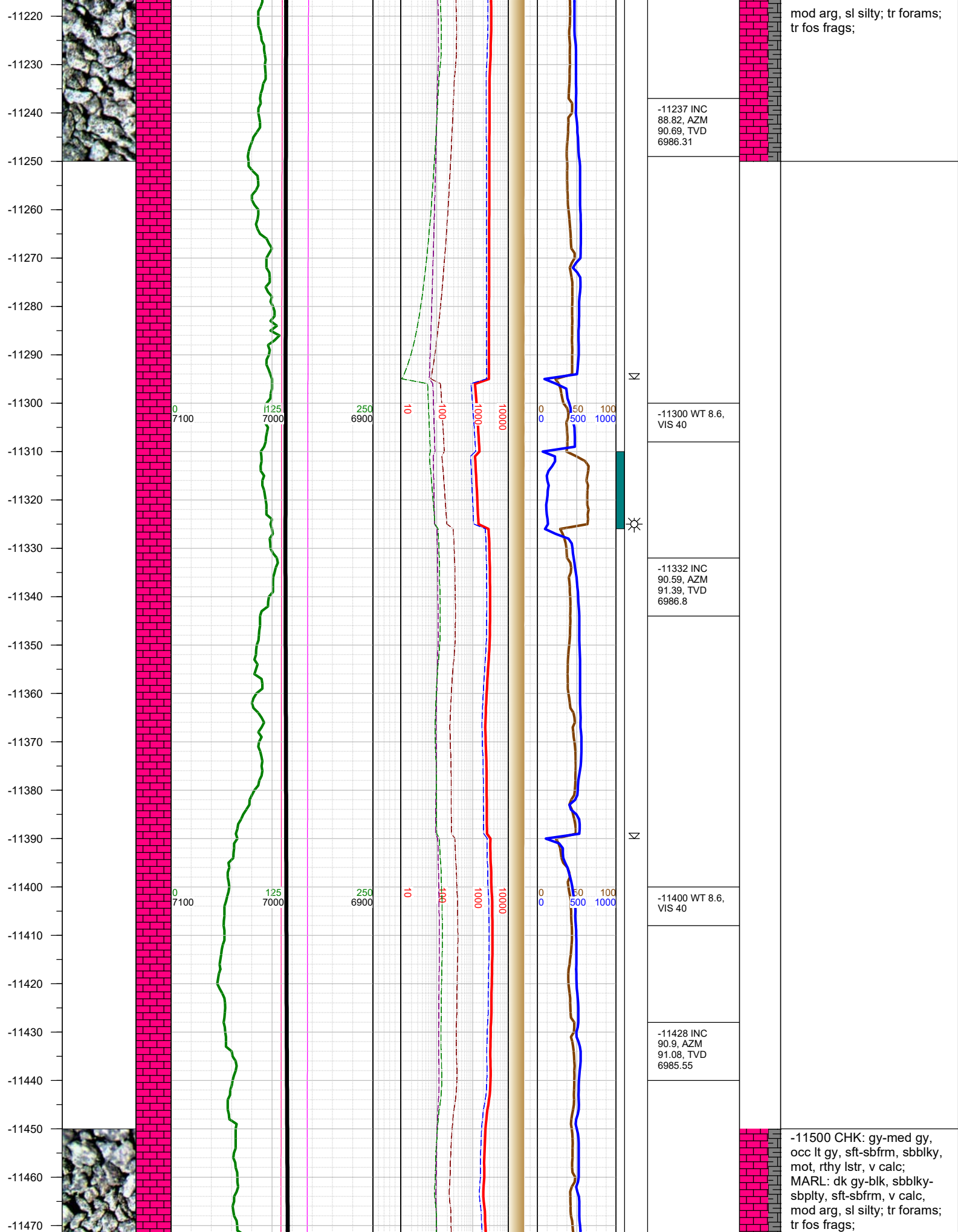


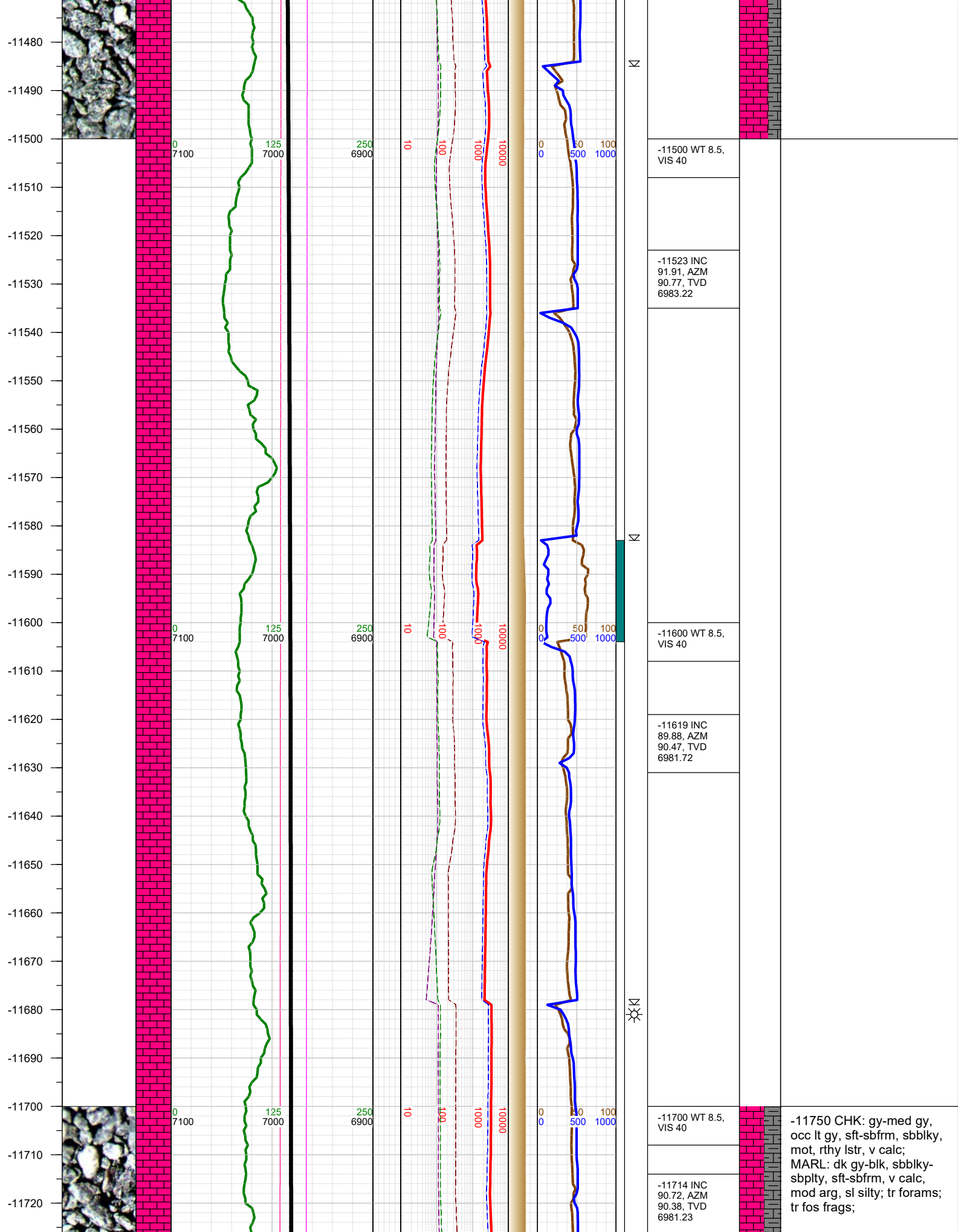




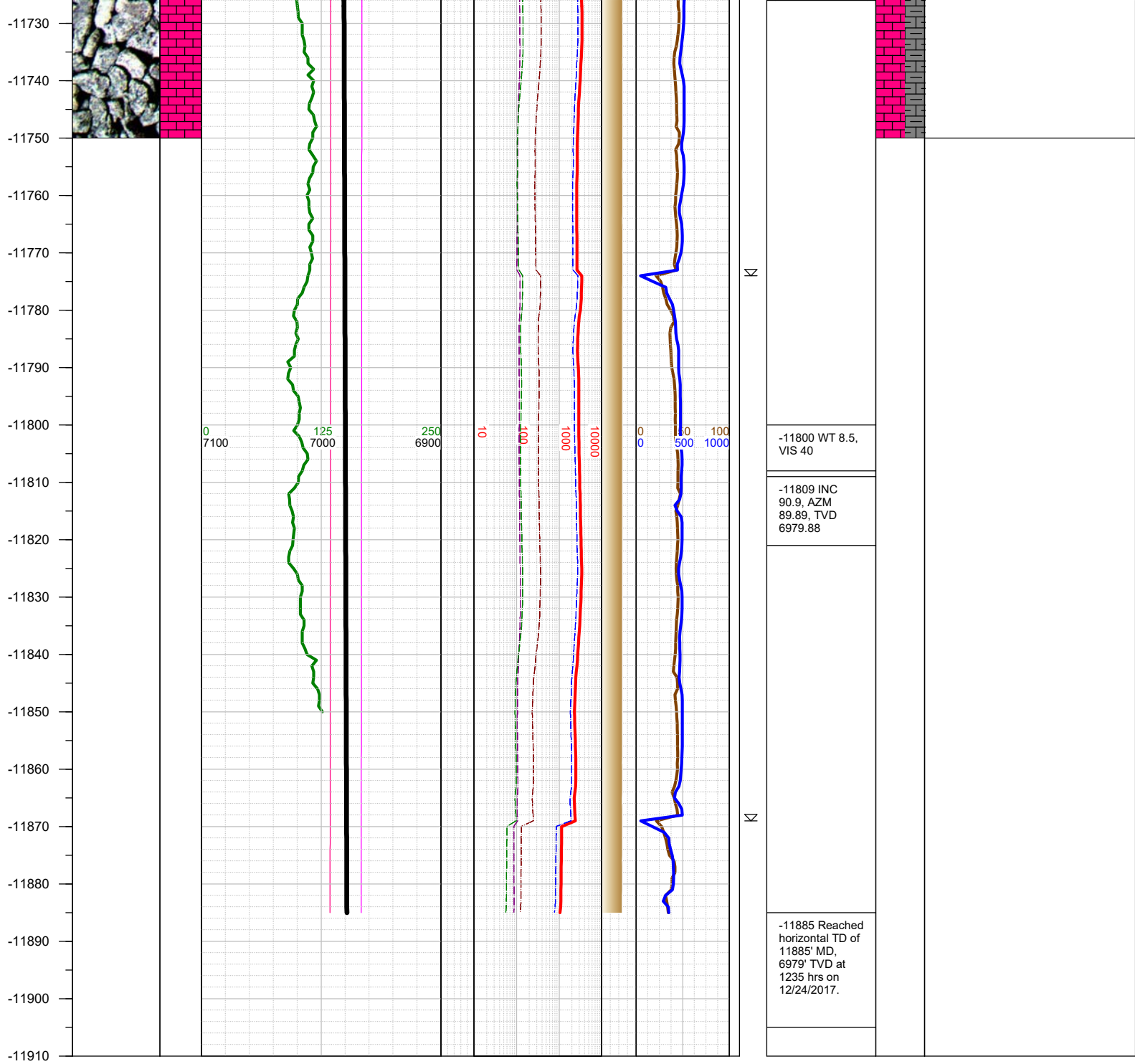












TOTAL DEPTH = 11885'

Thank you for using Earth Science Agency