

OPERATOR: **Extraction Oil & Gas**

WELL NAME: **Jesser 3E-10-7N**

FIELD NAME: DJ Basin - Wattenberg

DRILLING RIG: Patterson 901

API #: 05-123-45662

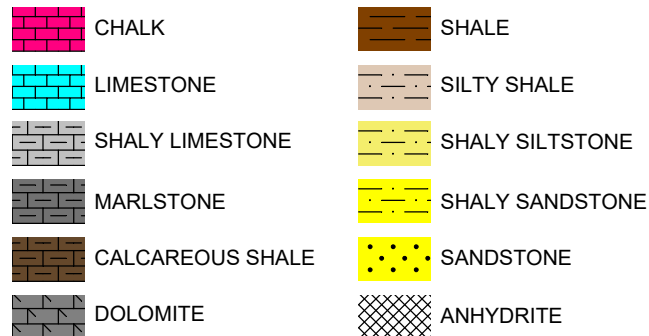
LAT/LONG: 40.341702, -104.997497
SURFACE HOLE: NWSW S3-T4N-R68W, 2314' FSL, 476' FWL
BOTTOM HOLE: S3-T4N-R68W, 1980' FNL, 460' FEL



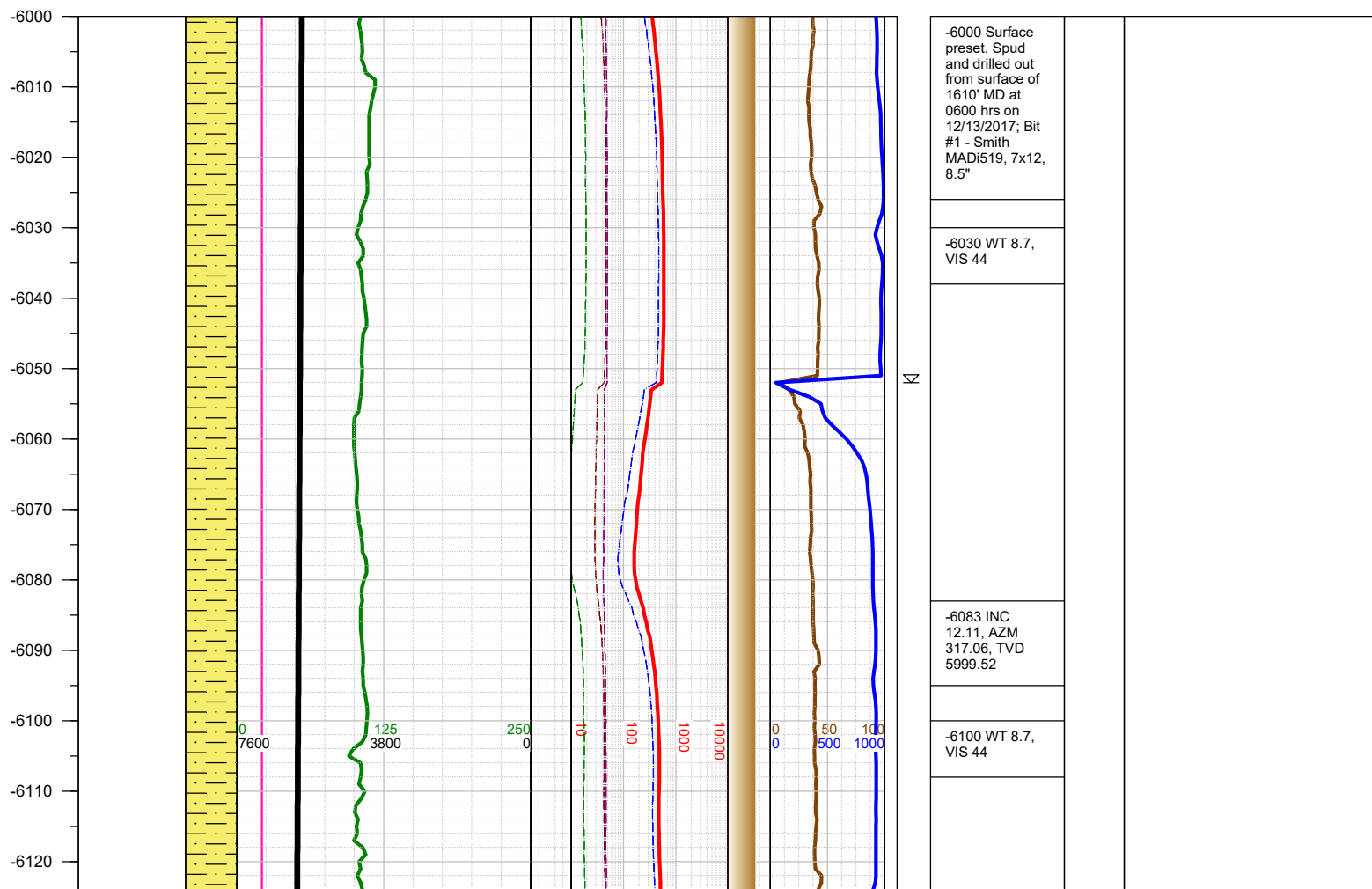
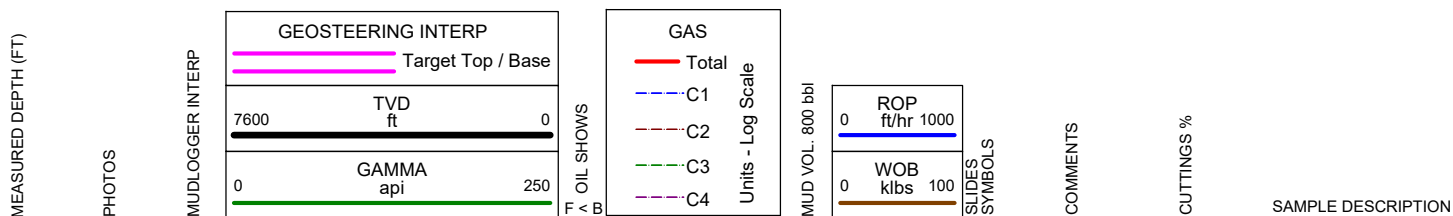
Earth Science Agency, LLC

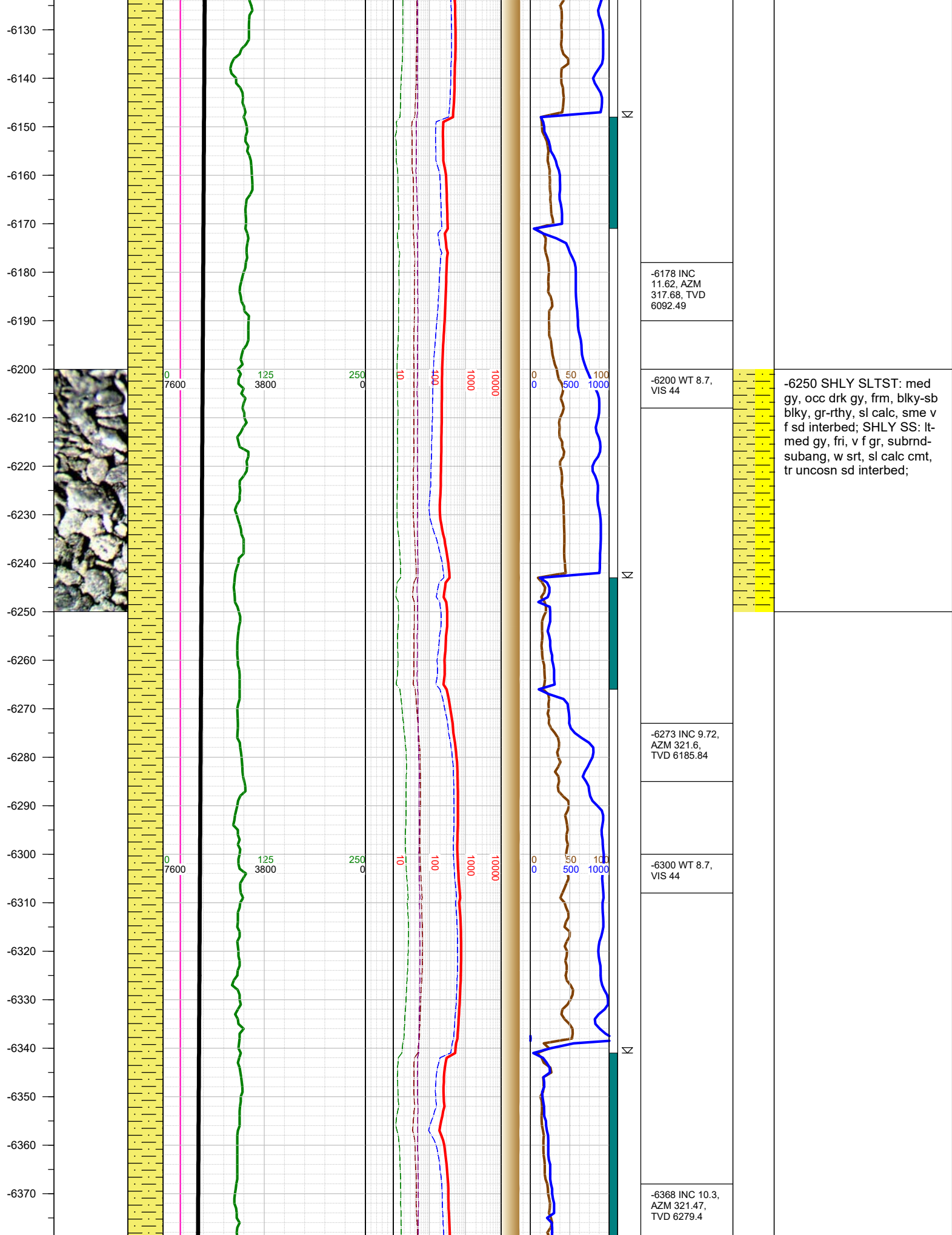
COUNTY: Weld
STATE: Colorado
GROUND ELEVATION: 5112'
KELLY BUSHING: 5141'
DRILLING FLUID: OBM
TVD VS. MD: 6953' / 11870'
SPUD DATE: December 13, 2017
TD DATE: December 15, 2017
DEPTHS LOGGED: 6000' - 11870'
DATES LOGGED: December 13, 2017 - December 15, 2017
GEOLOGISTS: Joe Coon, Dominic Pitre
SCALE: 5" = 100'

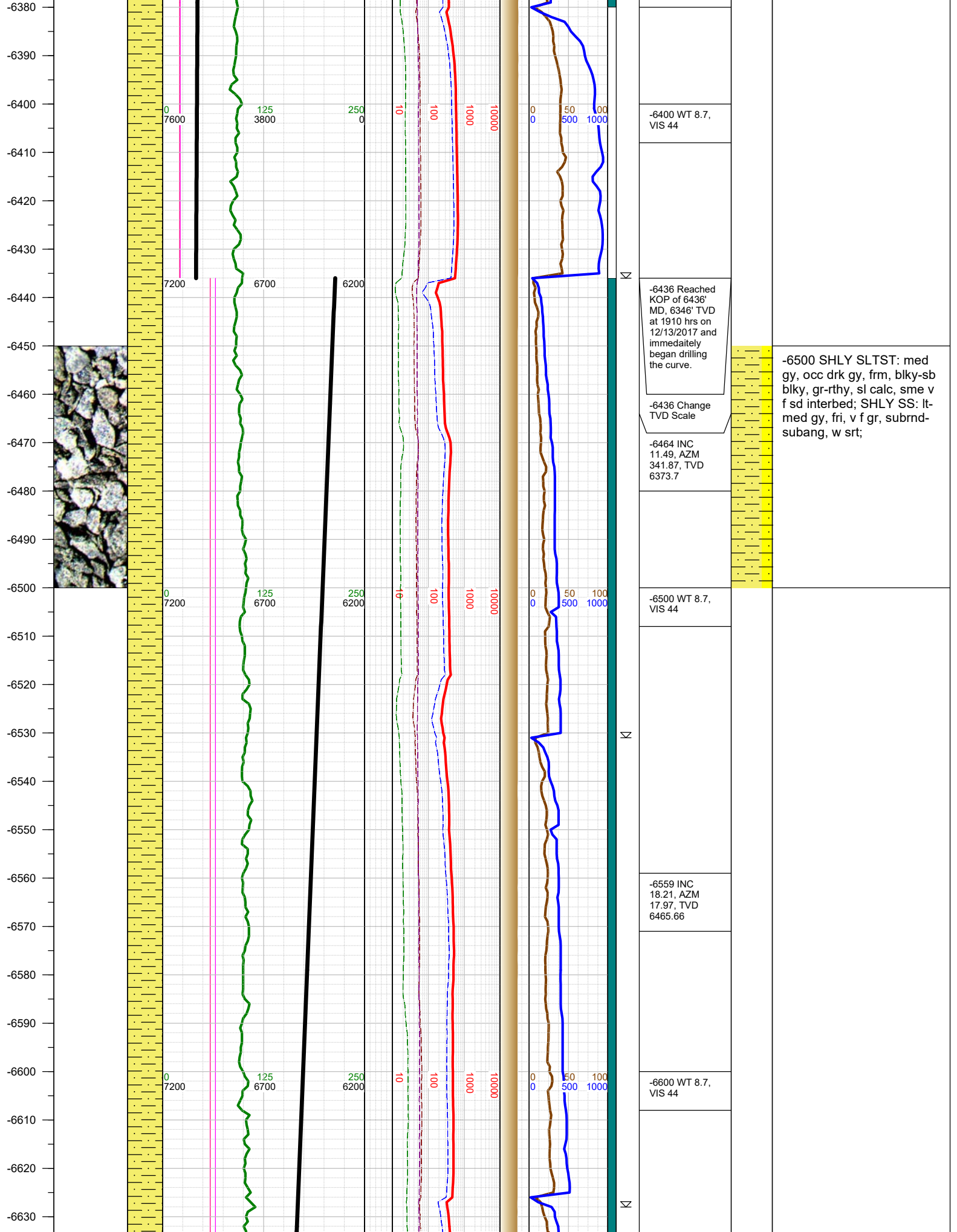
LEGEND

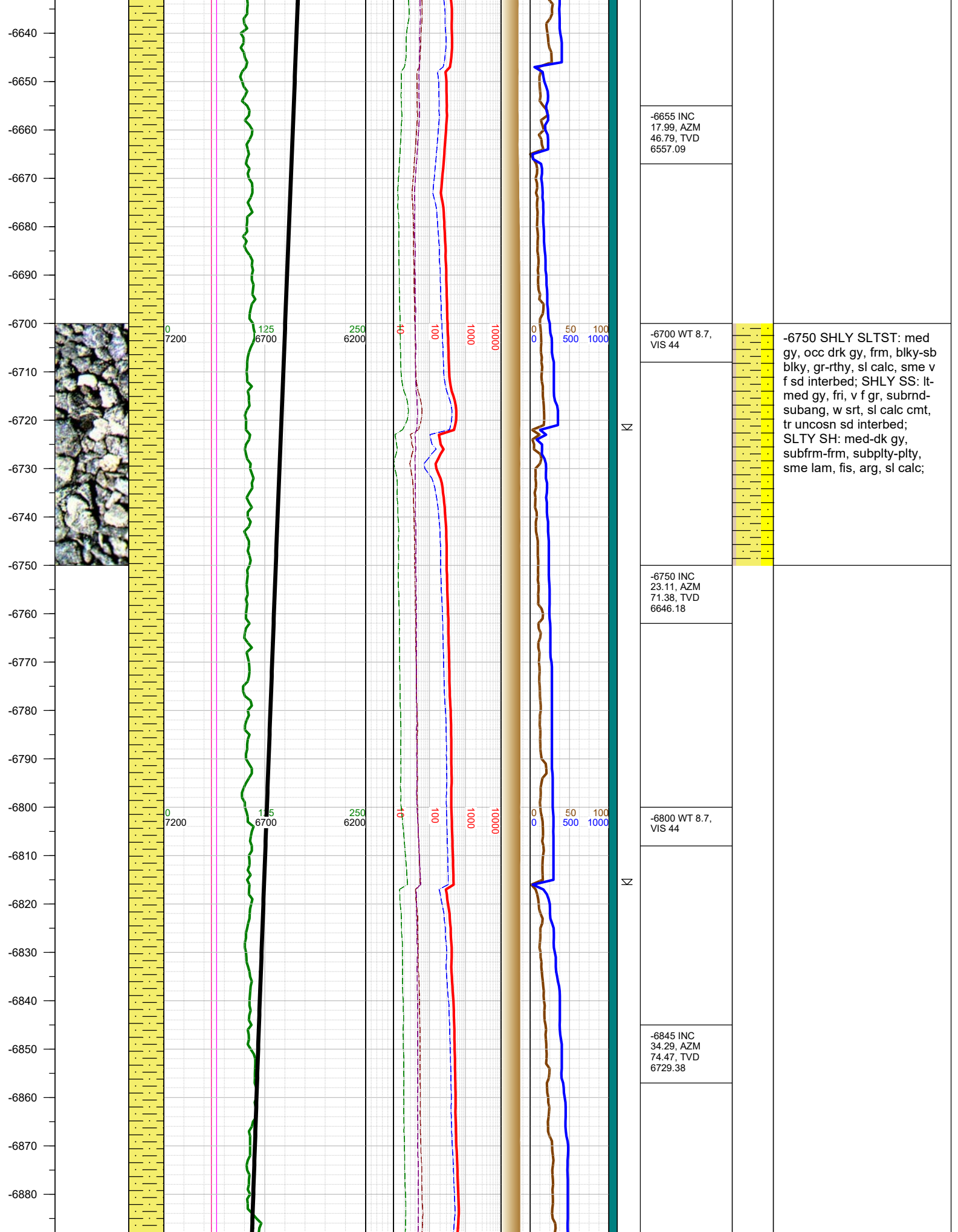


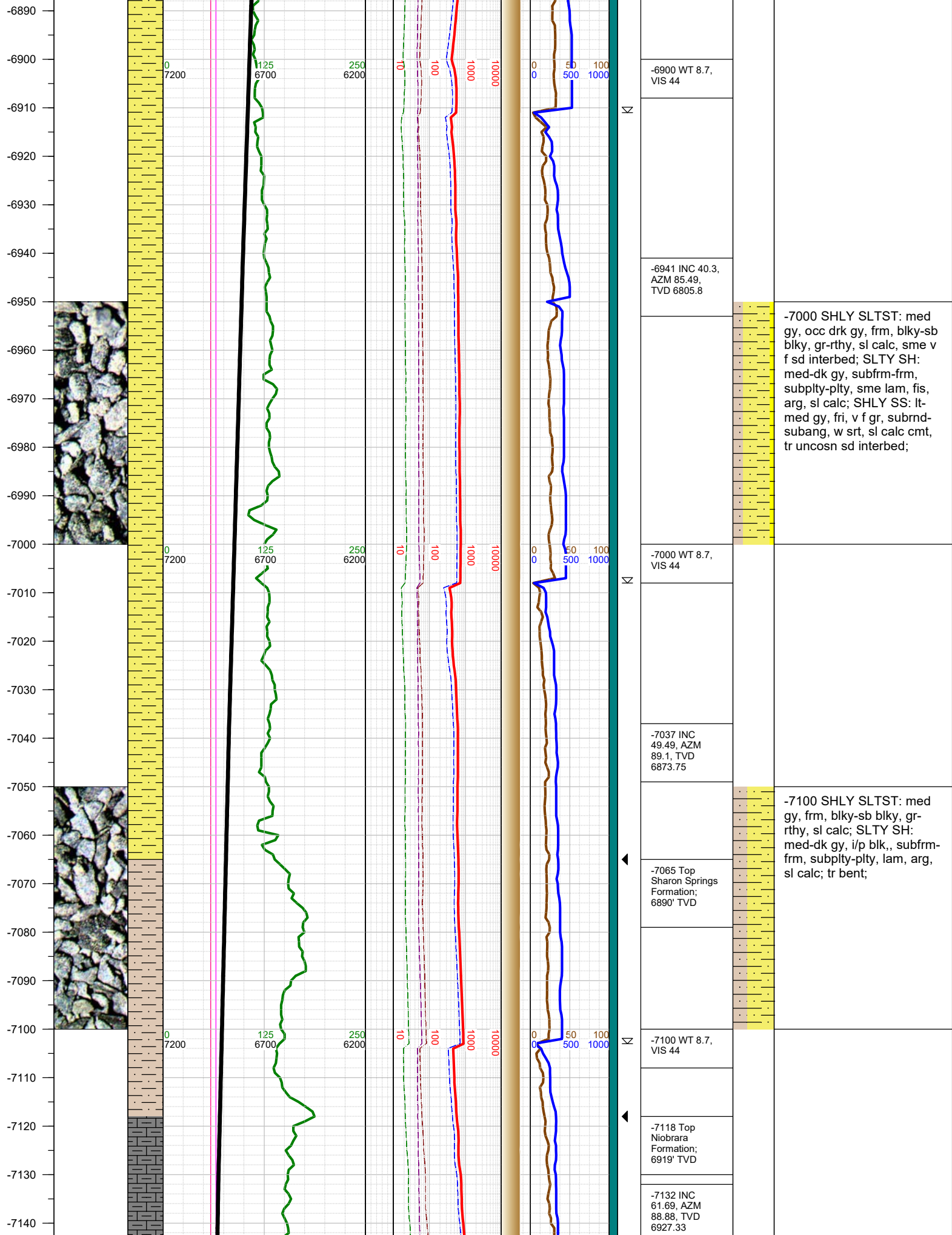
FORMATION \approx CONNECTION Δ MIDNIGHT NEW BIT GAS SHOW FAULT

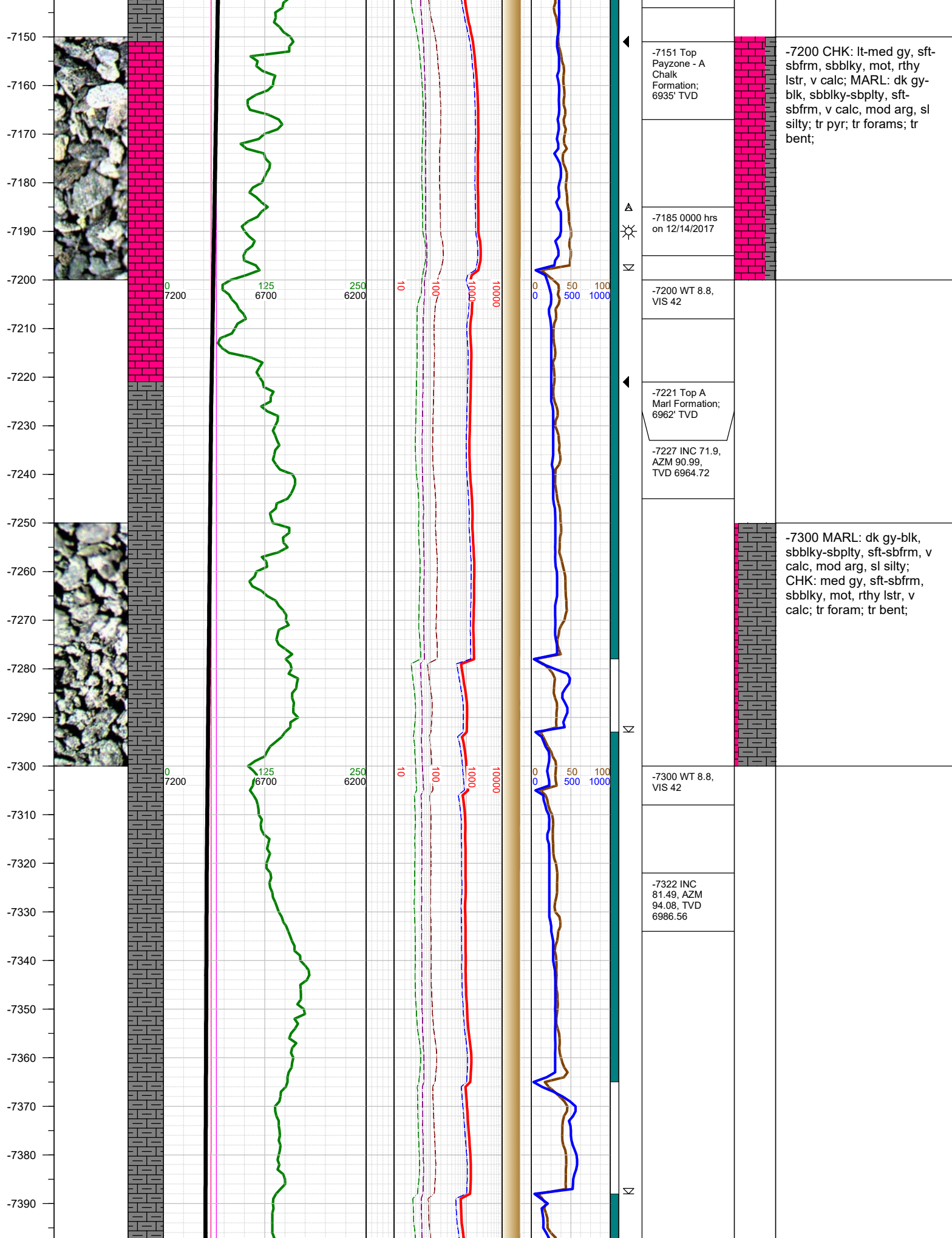


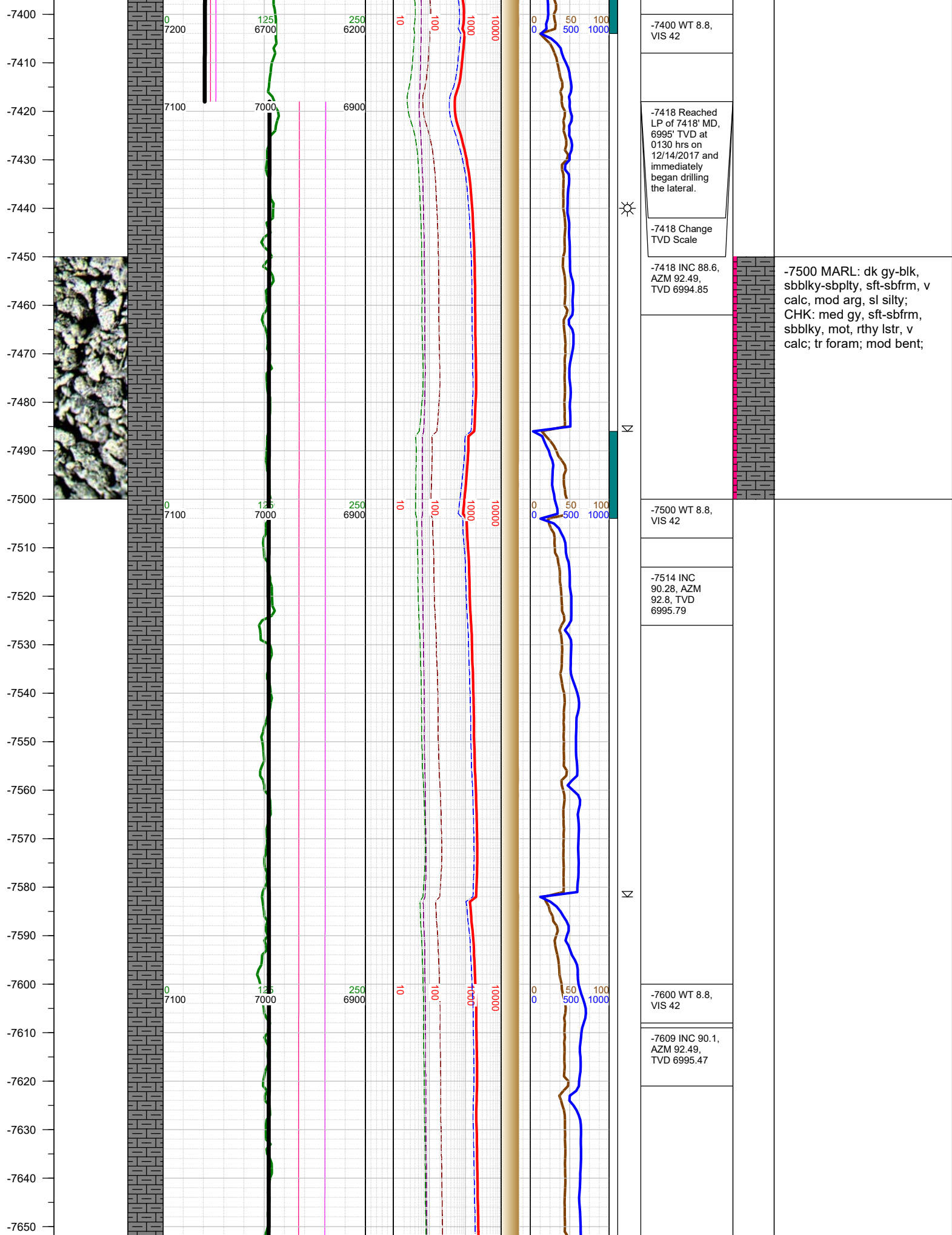


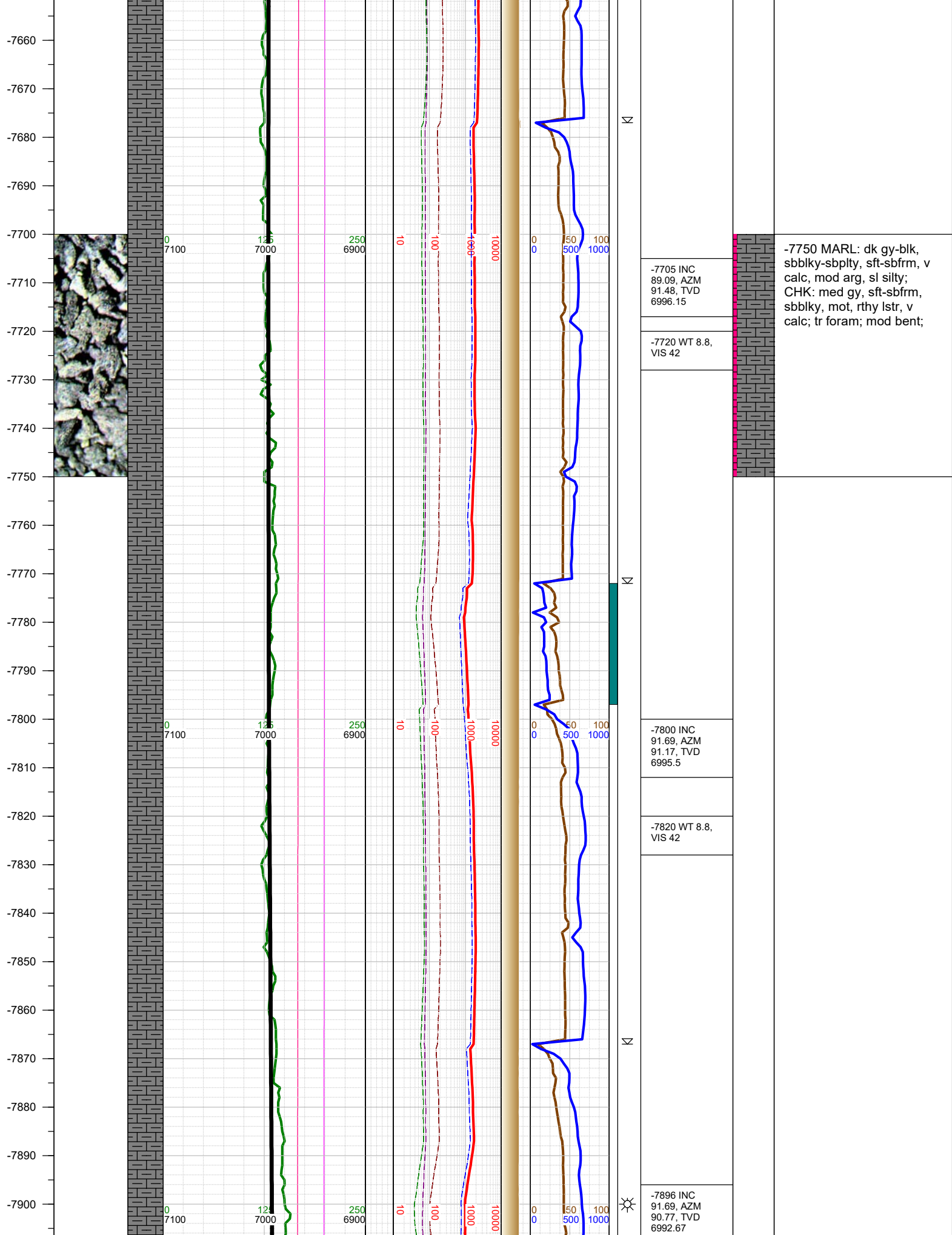




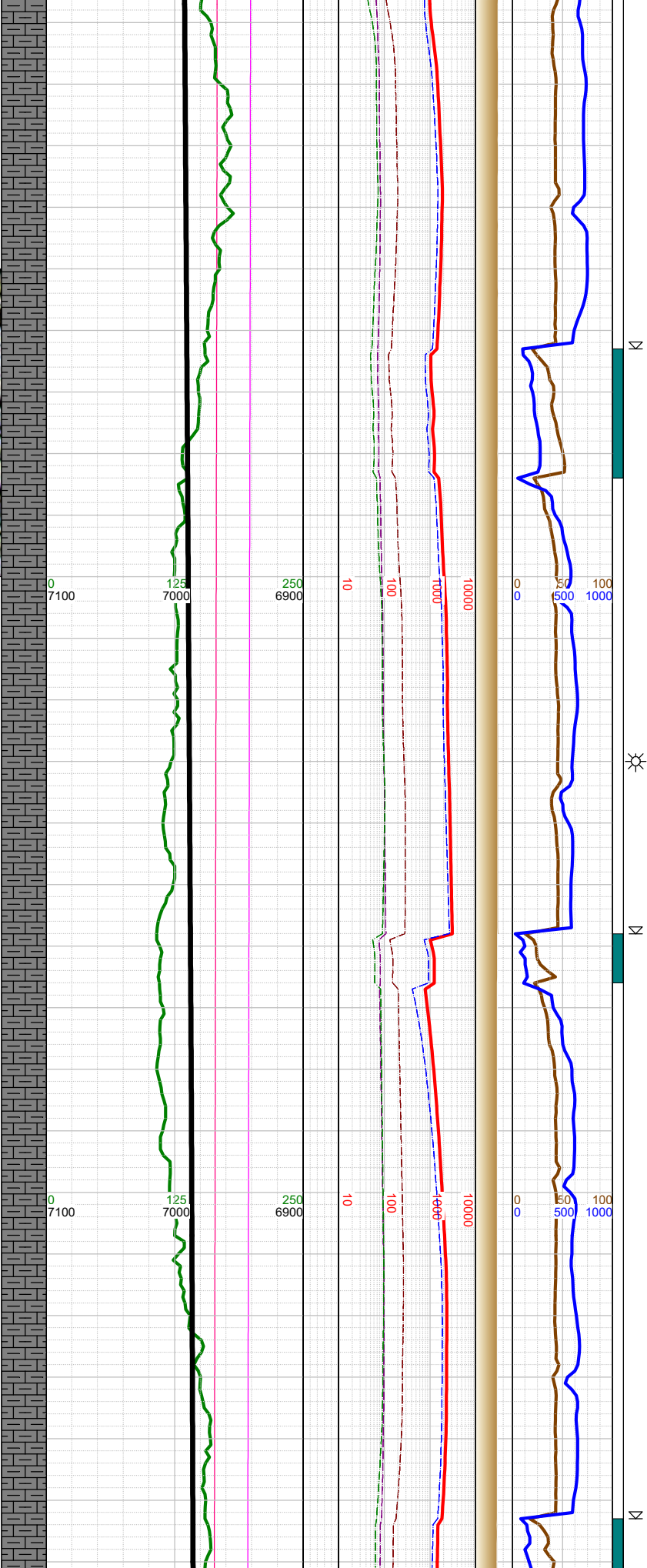
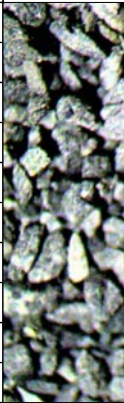




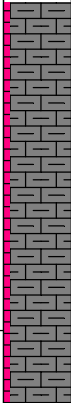




-7910
-7920
-7930
-7940
-7950
-7960
-7970
-7980
-7990
-8000
-8010
-8020
-8030
-8040
-8050
-8060
-8070
-8080
-8090
-8100
-8110
-8120
-8130
-8140
-8150
-8160

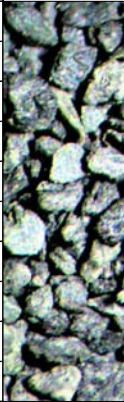


-7910 WT 8.8, VIS 42
-7991 INC 91.78, AZM 93.2, TVD 6989.8
-8010 WT 8.8, VIS 42
-8087 INC 91.52, AZM 93.2, TVD 6987.03
-8100 WT 8.8, VIS 42



-8000 MARL: dk gy-blk, sbblky-sbplty, sft-sbfrm, v calc, mod arg, sl silty; CHK: med gy, sft-sbfrm, sbblky, mot, rthy lstr, v calc; tr foram; mod bent;

-8170
-8180
-8190
-8200
-8210
-8220
-8230
-8240
-8250
-8260
-8270
-8280
-8290
-8300
-8310
-8320
-8330
-8340
-8350
-8360
-8370
-8380
-8390
-8400
-8410



0
7100

125
7000

250
6900

10

100

1000

10000

0
0

50
500

100
1000

Σ

-8182 INC
90.41, AZM
94.08, TVD
6985.43

-8200 WT 8.8,
VIS 42

-8277 INC
90.41, AZM
93.86, TVD
6984.75

-8300 WT 8.8,
VIS 42

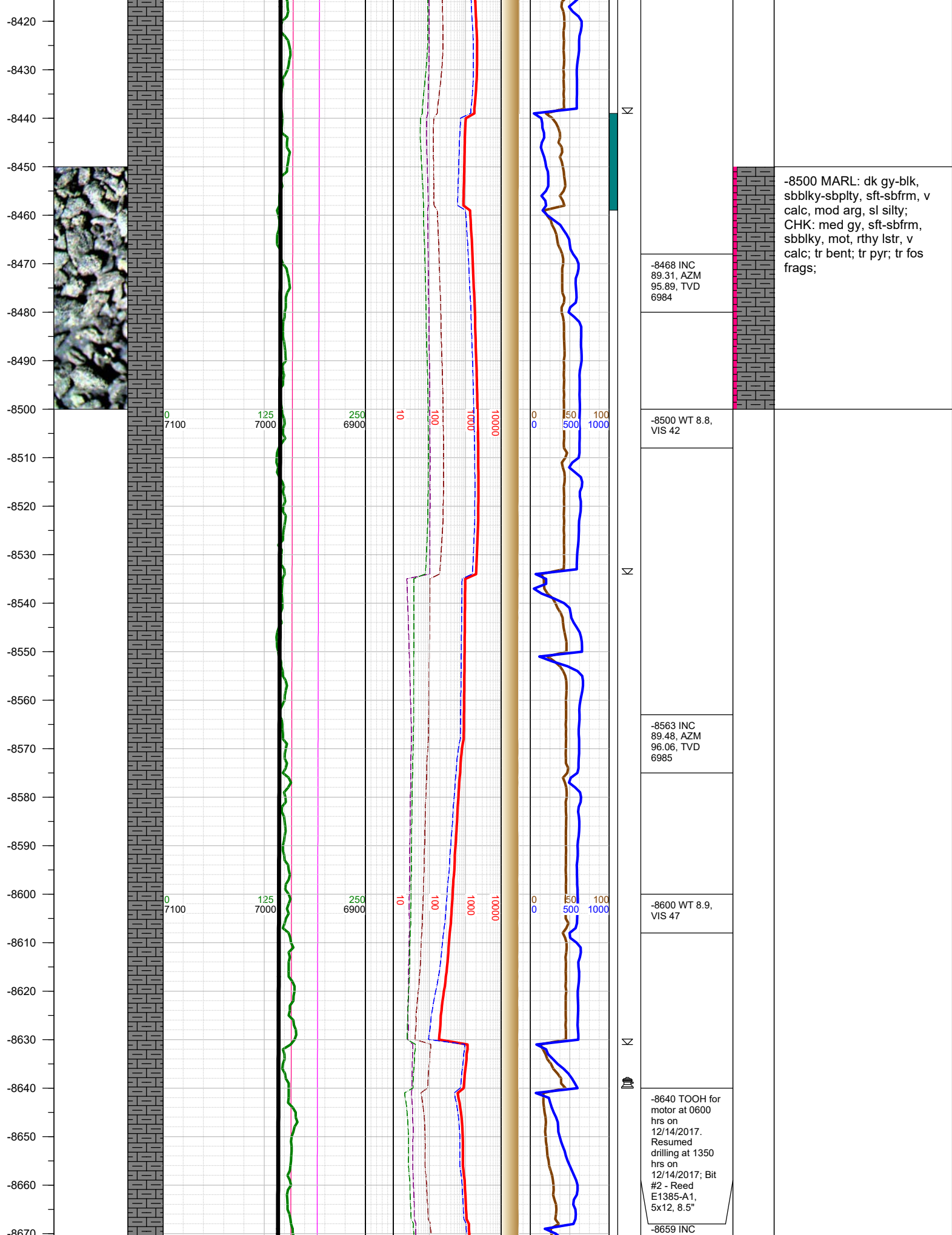
-8373 INC
90.59, AZM
93.59, TVD
6983.91

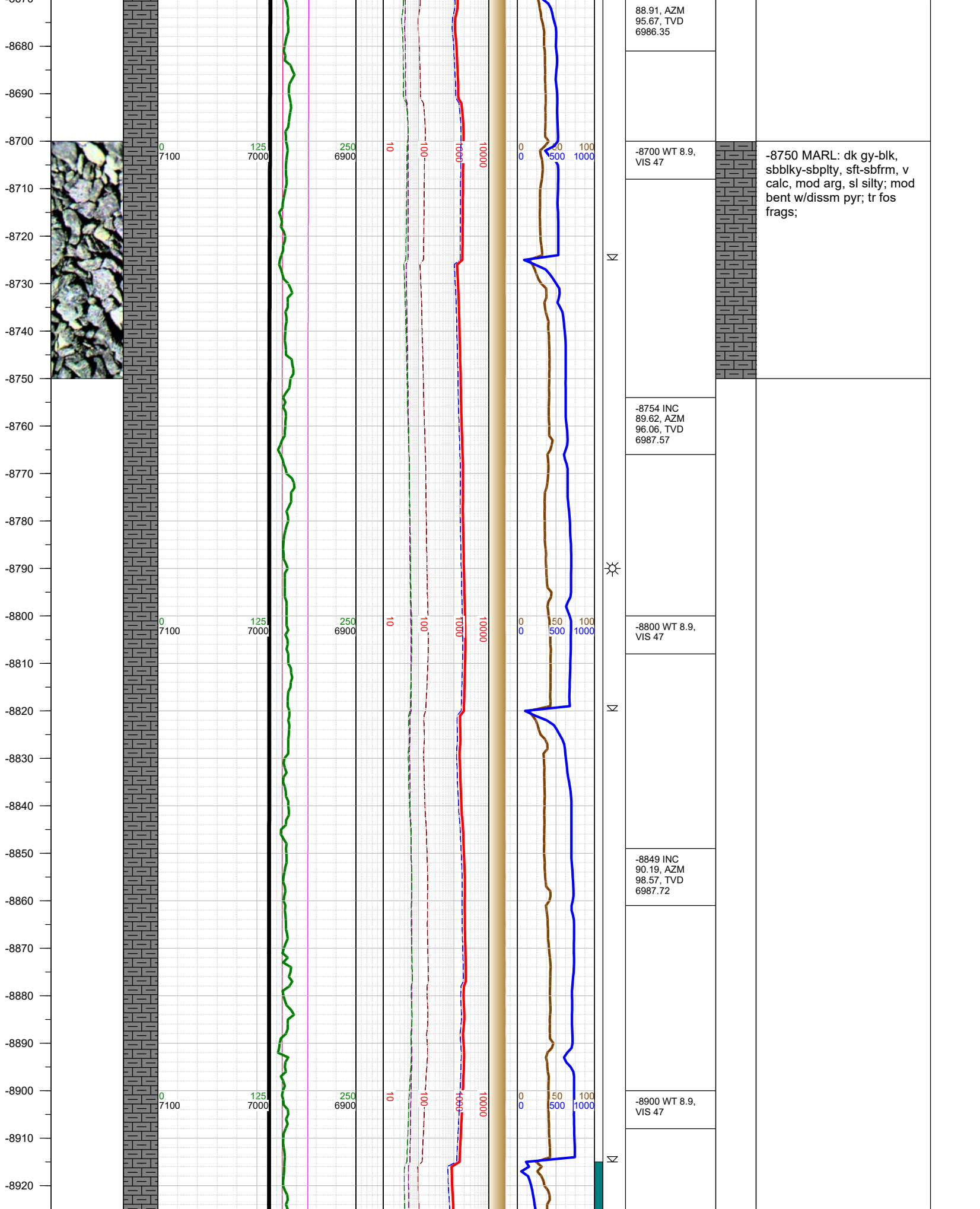
Σ

☼

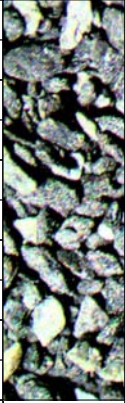
-8400 WT 8.8,
VIS 42

-8250 MARL: dk gy-blk,
sbbkly-sbplty, sft-sbfrm, v
calc, mod arg, sl silty; tr
pyr; tr fos frags;





-8930
-8940
-8950
-8960
-8970
-8980
-8990
-9000
-9010
-9020
-9030
-9040
-9050
-9060
-9070
-9080
-9090
-9100
-9110
-9120
-9130
-9140
-9150
-9160
-9170



0
7100

125
7000

250
6900

10

100

1000

10000

0
0

50
500

100
1000

Σ

☀

Σ

-8945 INC
89.79, AZM
91.88, TVD
6987.74

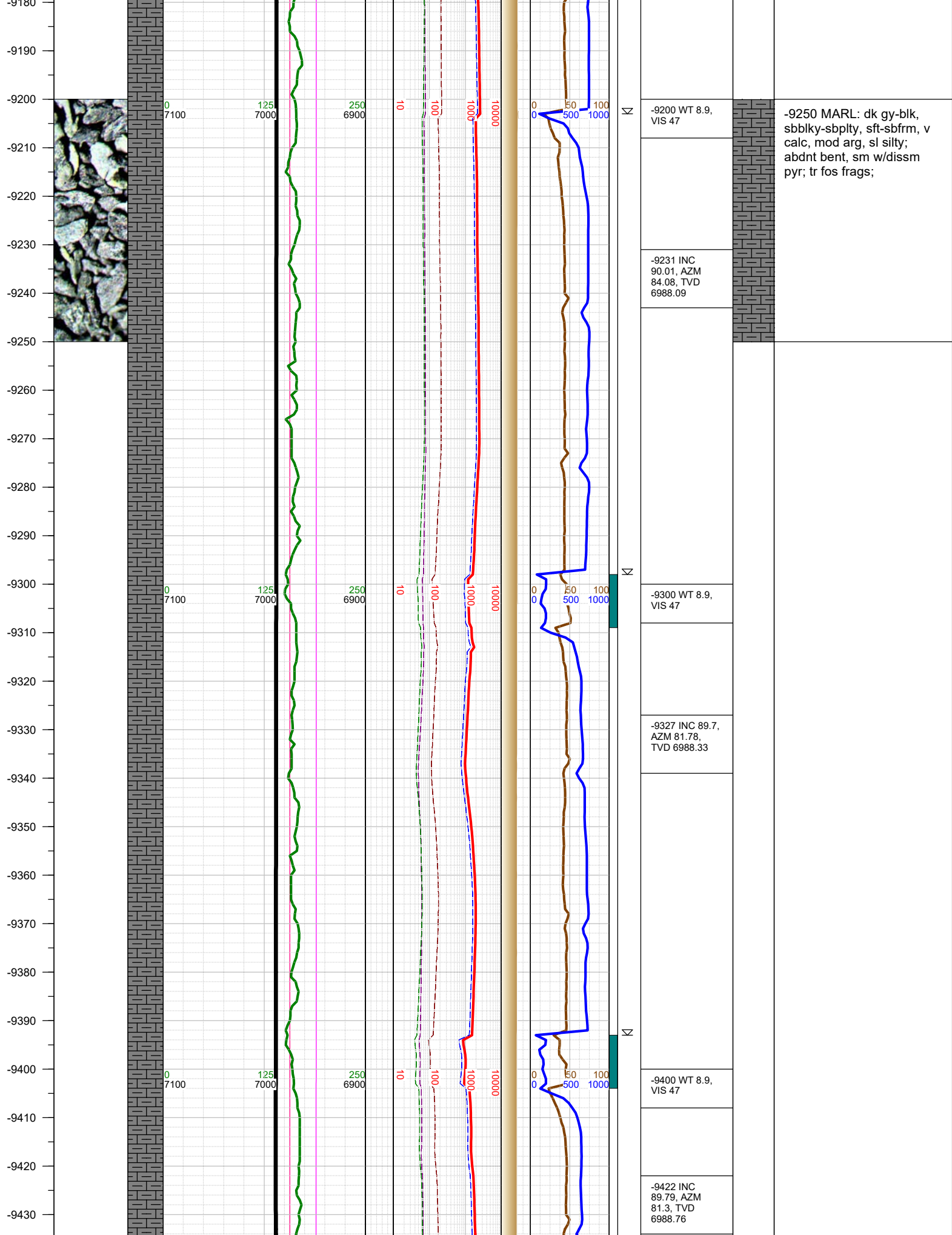
-9000 WT 8.9,
VIS 47

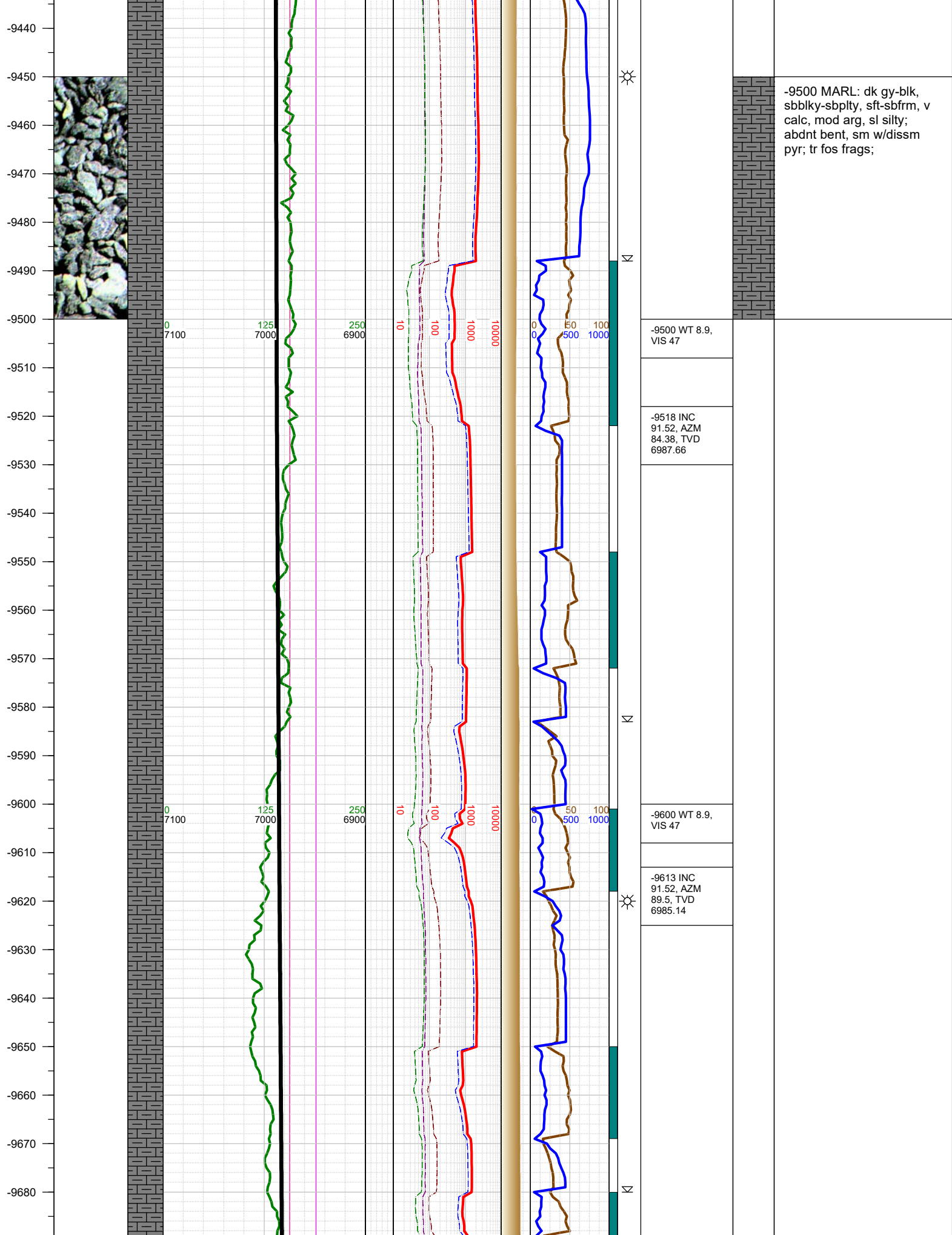
-9040 INC 90.1,
AZM 91.57,
TVD 6987.83

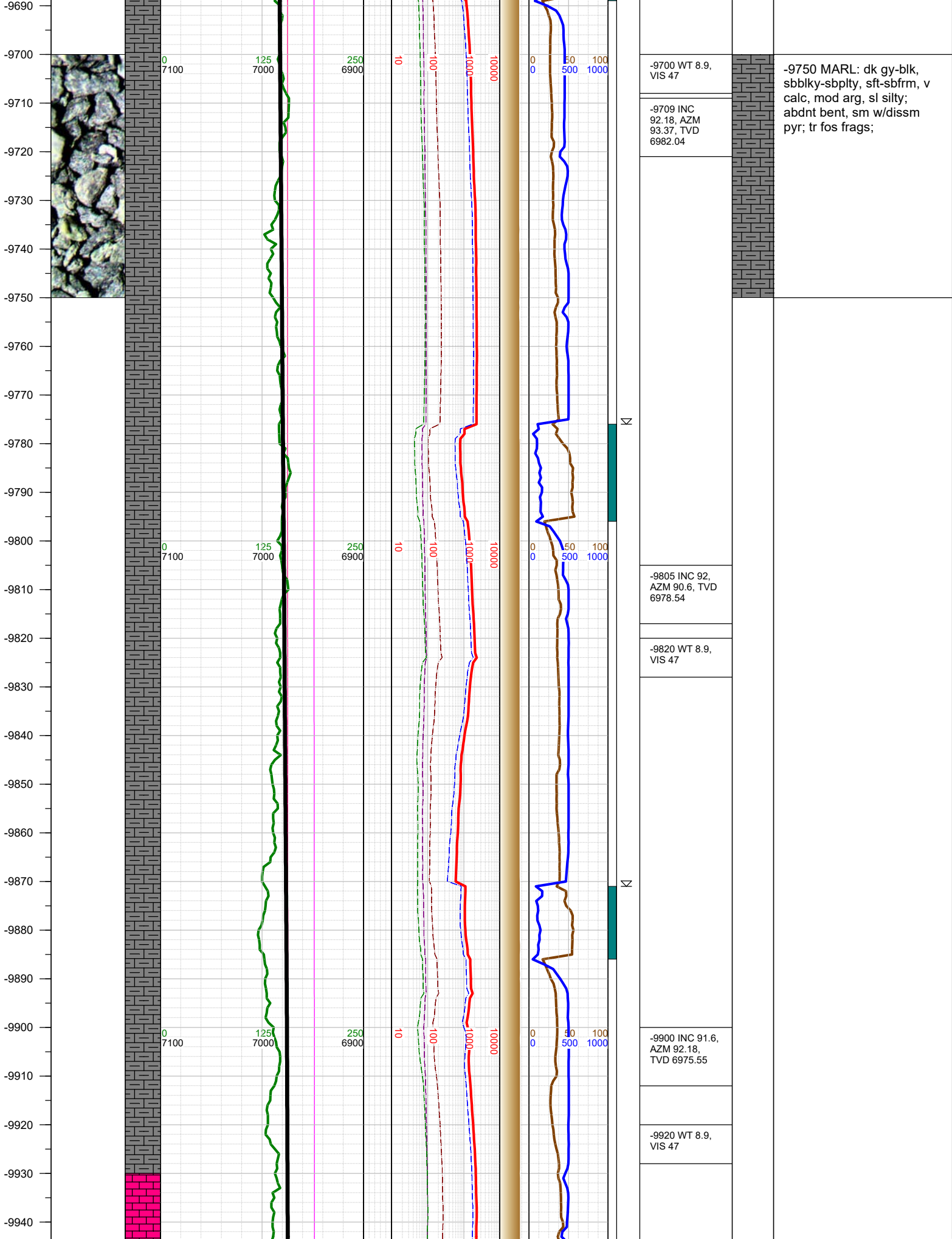
-9100 WT 8.9,
VIS 47

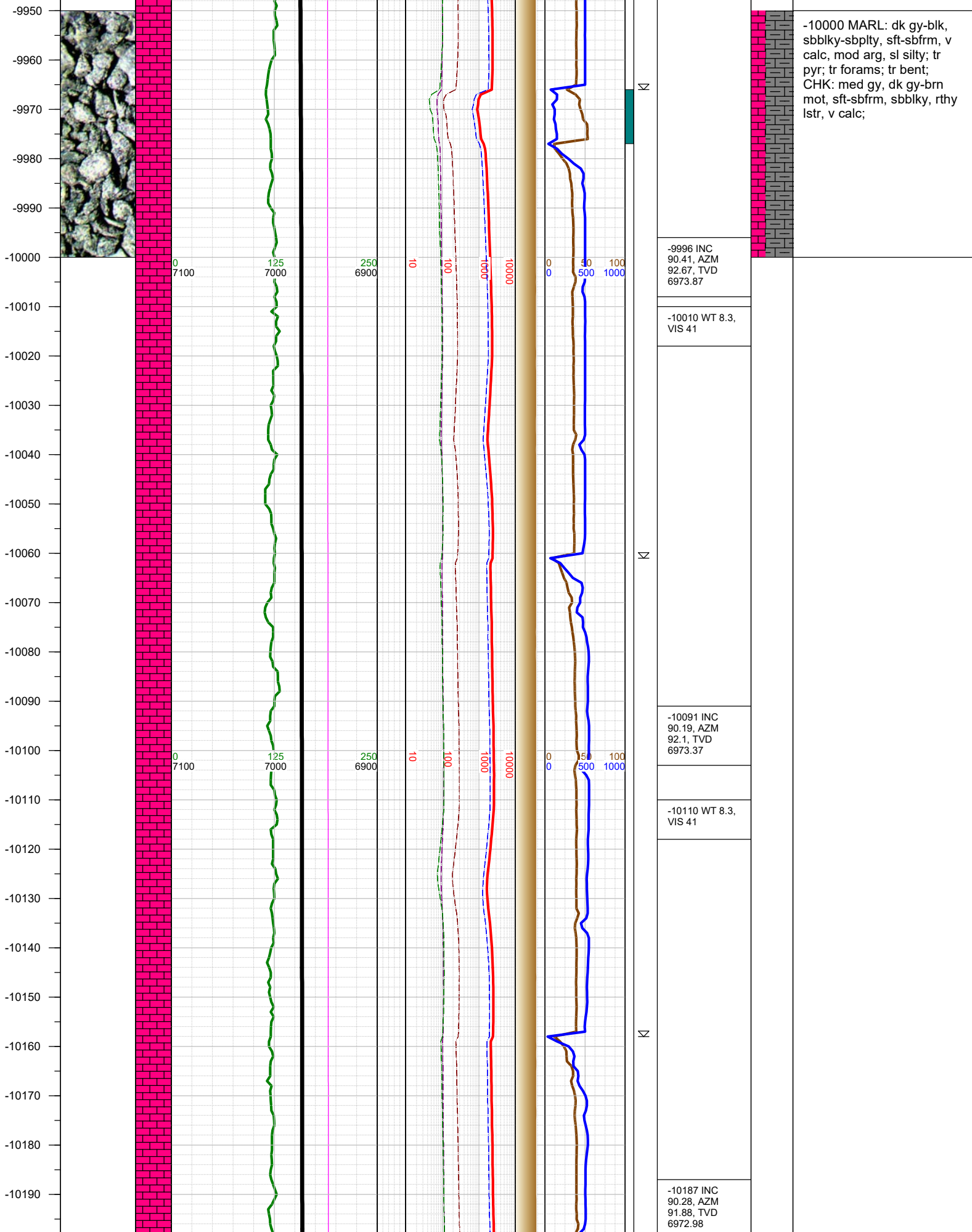
-9136 INC
89.79, AZM
85.27, TVD
6987.92

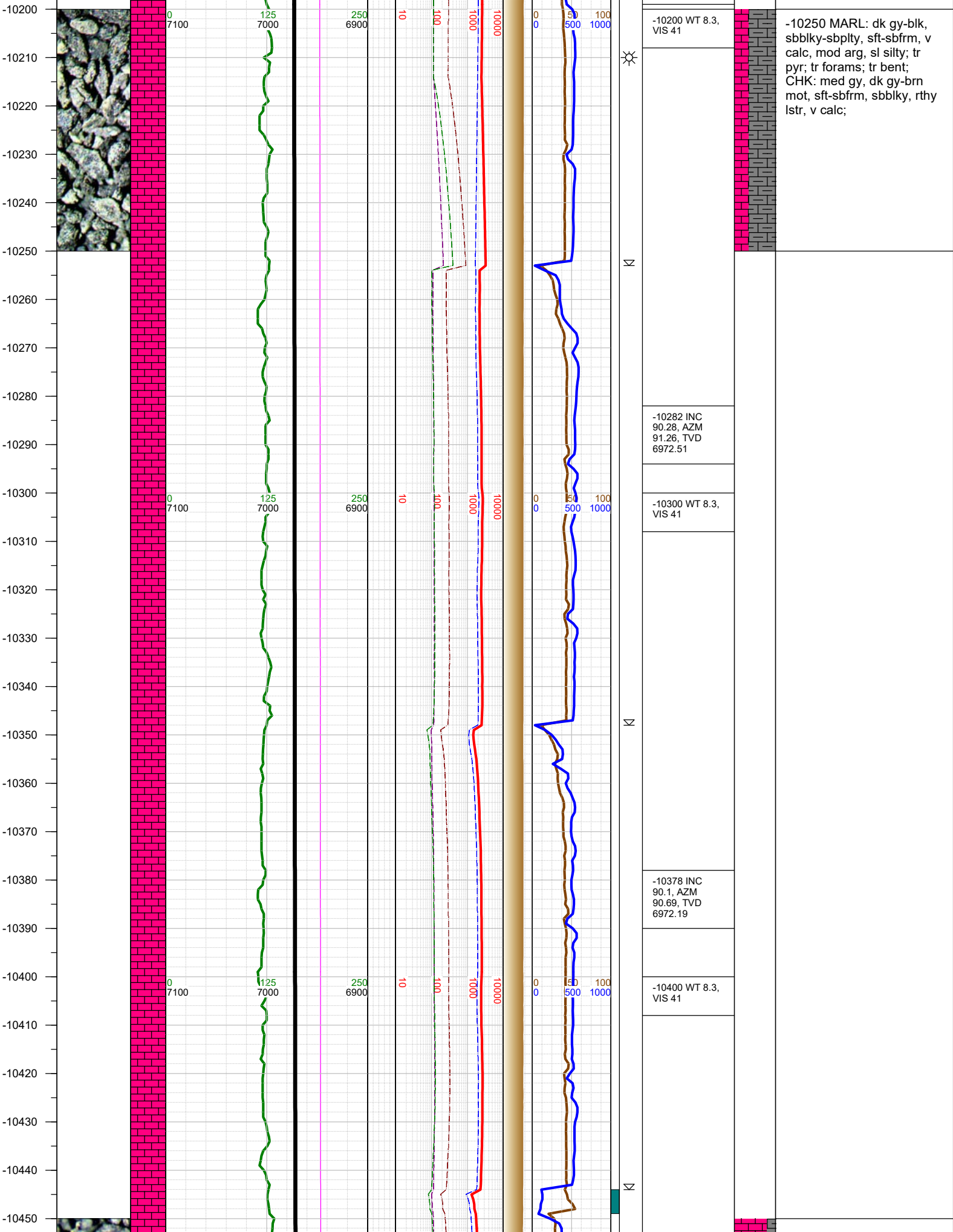
-9000 MARL: dk gy-blk,
sbblky-sbplty, sft-sbfrm, v
calc, mod arg, sl silty; mod
bent w/dissm pyr; tr fos
frags;

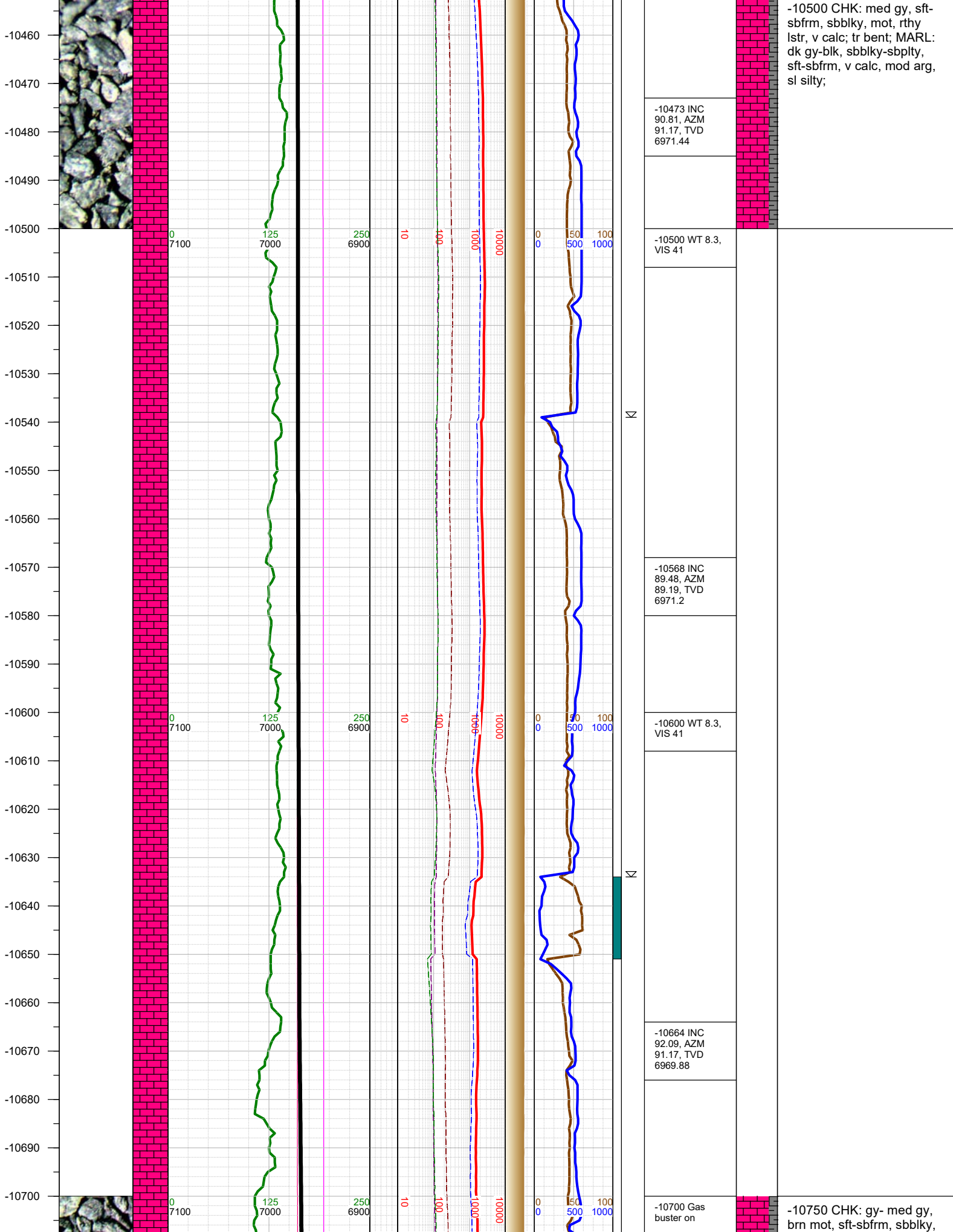


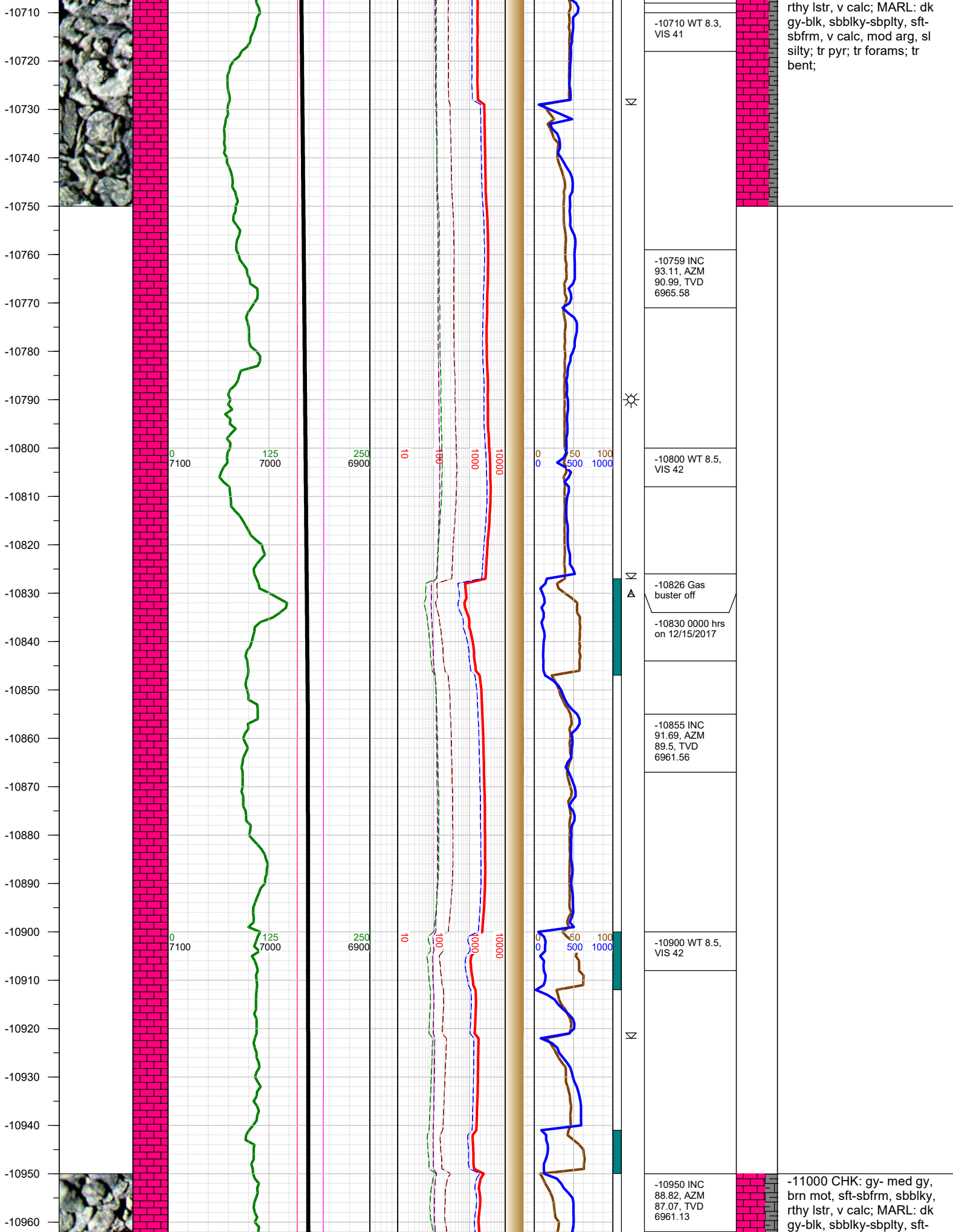


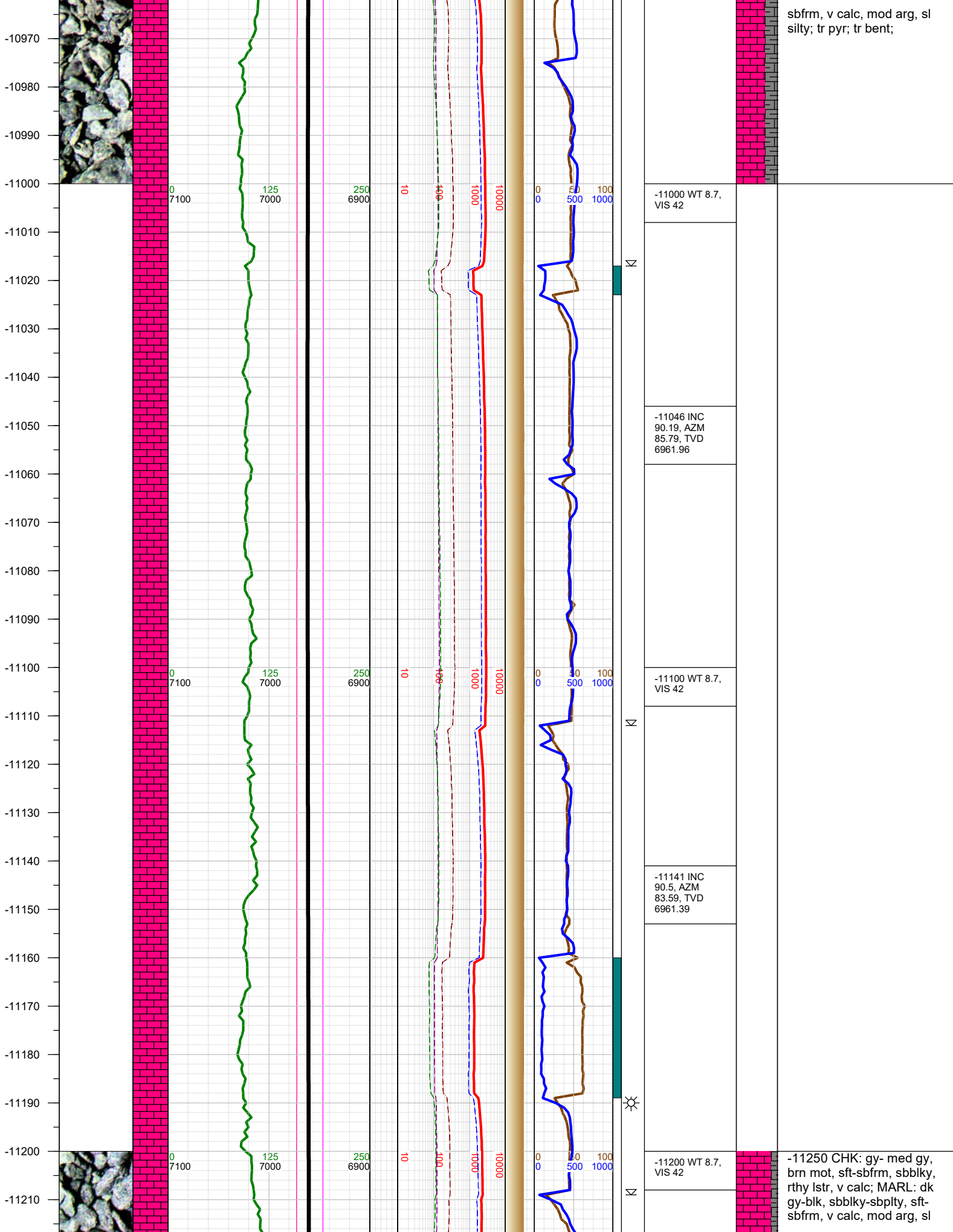




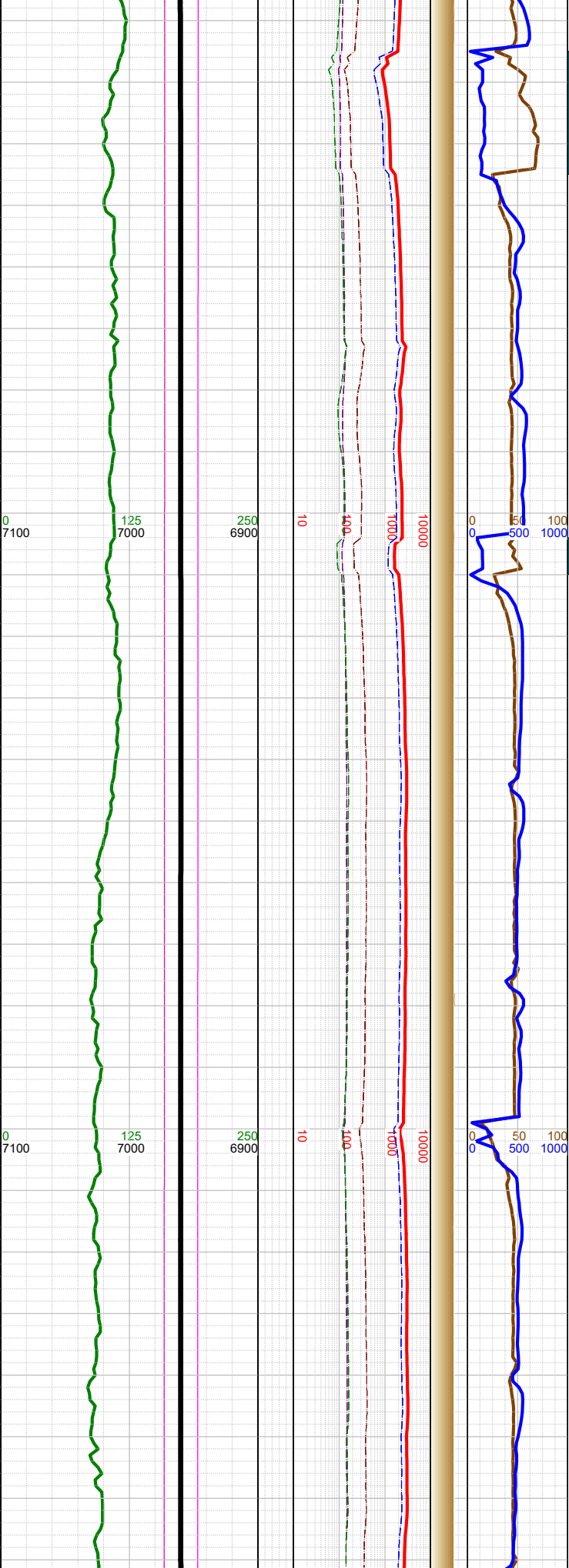
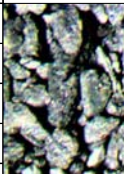
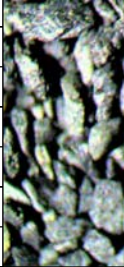








-11220
-11230
-11240
-11250
-11260
-11270
-11280
-11290
-11300
-11310
-11320
-11330
-11340
-11350
-11360
-11370
-11380
-11390
-11400
-11410
-11420
-11430
-11440
-11450
-11460
-11470



-11236 INC
90.81, AZM
89.1, TVD
6960.3

-11300 WT 8.7,
VIS 42

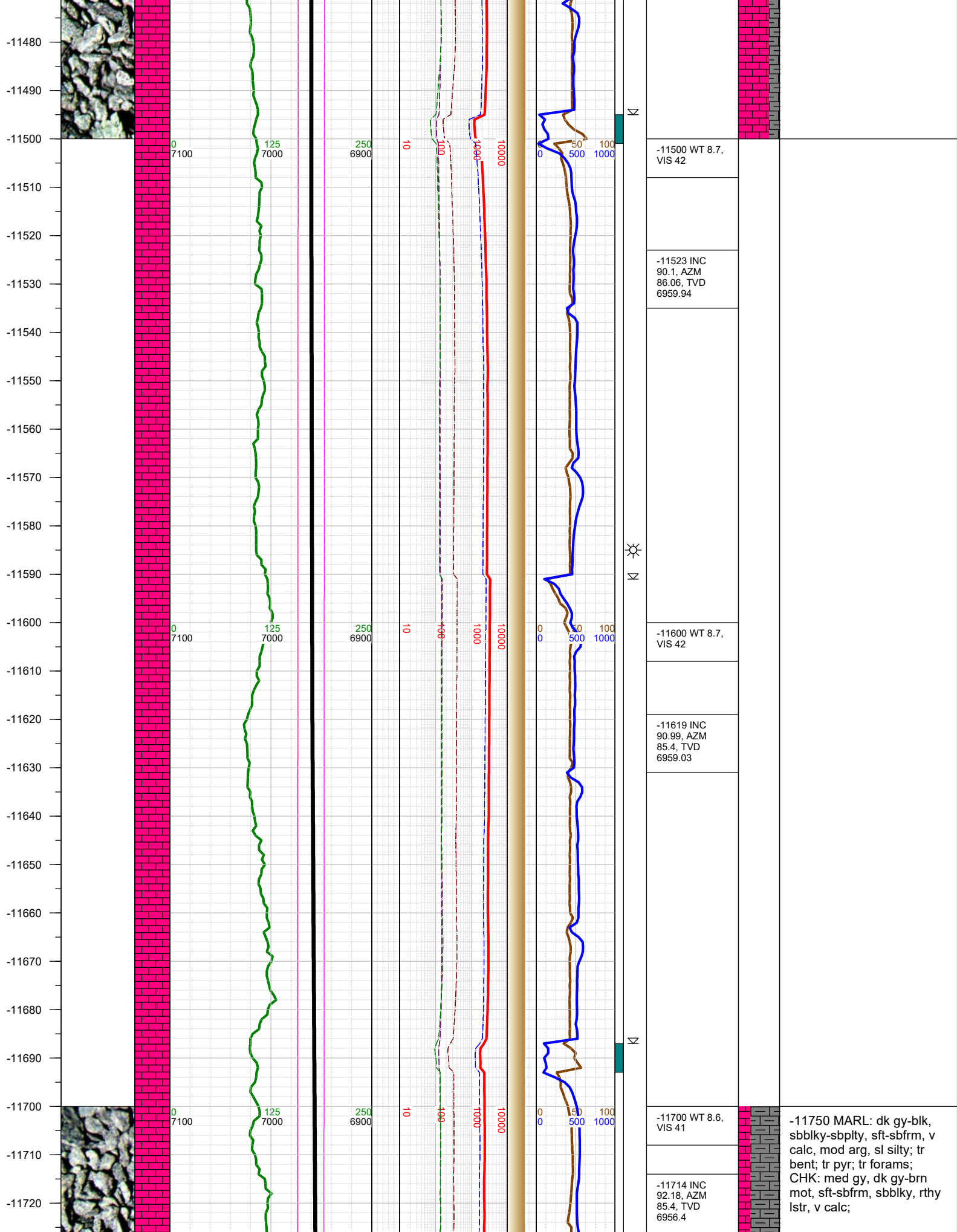
-11332 INC
89.48, AZM
87.6, TVD
6960.06

-11400 WT 8.7,
VIS 42

-11427 INC
90.28, AZM
86.5, TVD
6960.26

silty; tr pyr; abnt bent;

-11500 CHK: gy- med gy,
brn mot, sft-sbfrm, sbblky,
rthy lstr, v calc; MARL: dk
gy-blk, sbblky-sbplty, sft-
sbfrm, v calc, mod arg, sl
silty; tr pyr; tr bent;



-11750 MARL: dk gy-blk, sbblky-sbplty, sft-sbfrm, v calc, mod arg, sl silty; tr bent; tr pyr; tr forams; CHK: med gy, dk gy-brn mot, sft-sbfrm, sbblky, rthy lstr, v calc;

