



EXTRACTION OIL & GAS
Project: WELD COUNTY, COLORADO (NAD 83)
Site: Sec 3, T4N-R68W 6th PM (KB 29' CORRECT 111917)
Well: Jesser 3E 10-5N
Wellbore: Wellbore #1
Plan: Plan #2A (Jesser 3E 10-5N/Wellbore #1)

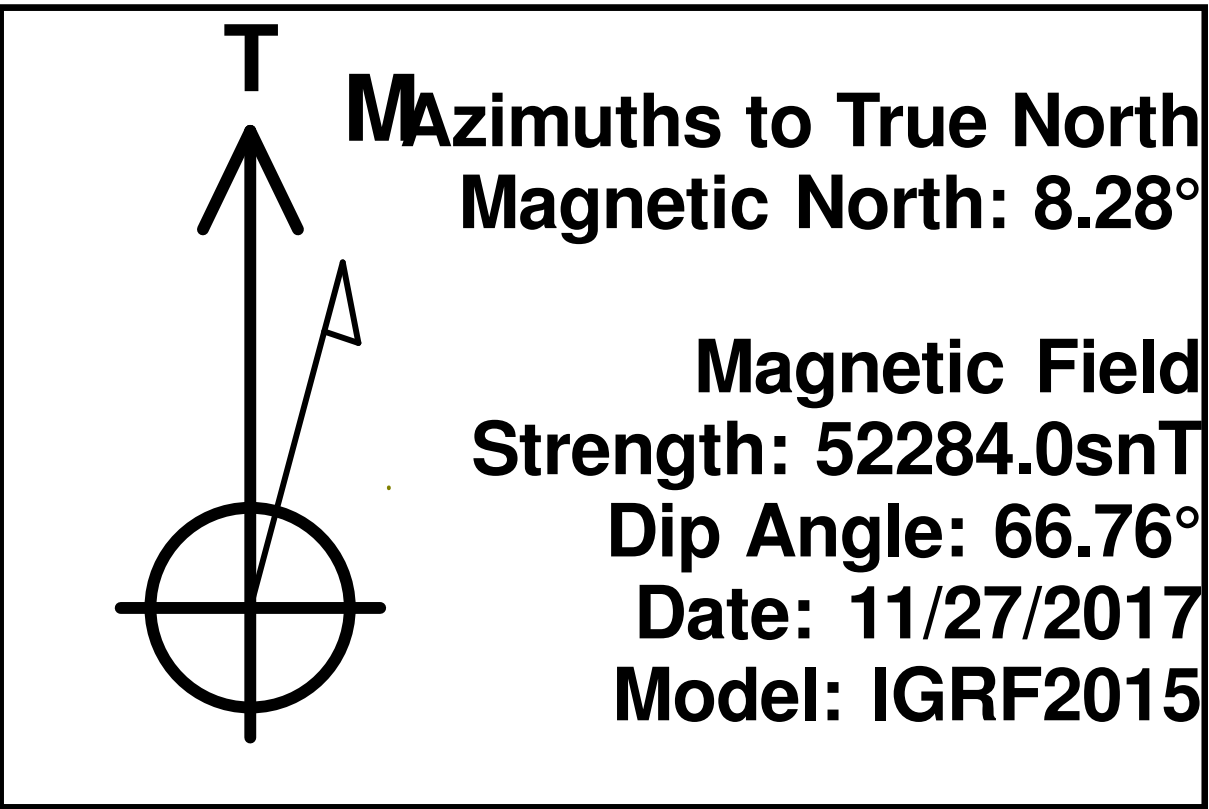
WELL DETAILS: Jesser 3E 10-5N

Ground Elevation:: 5113.0
RKB Elevation: KB=29 @ 5142.0usft
Rig Name:

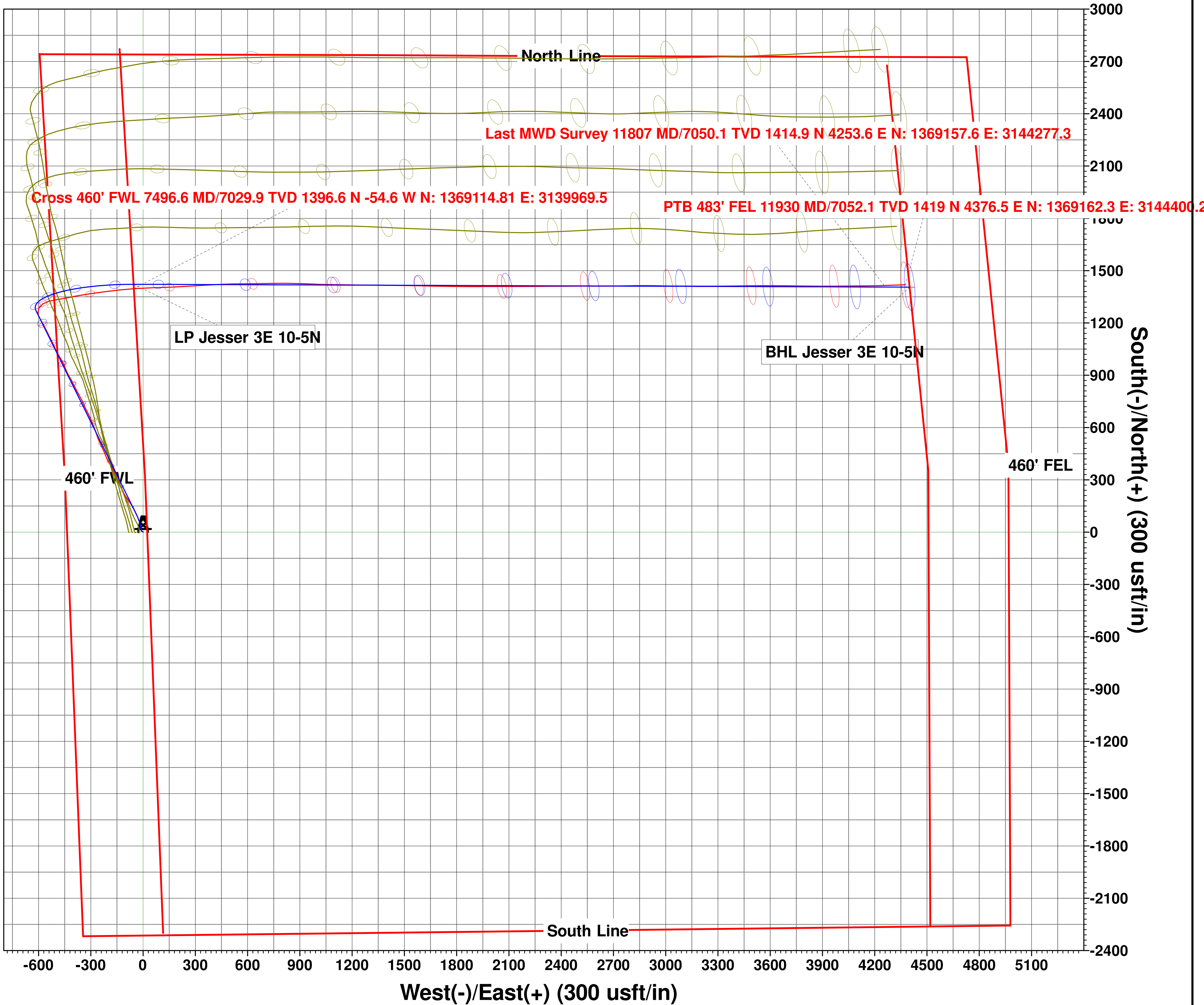
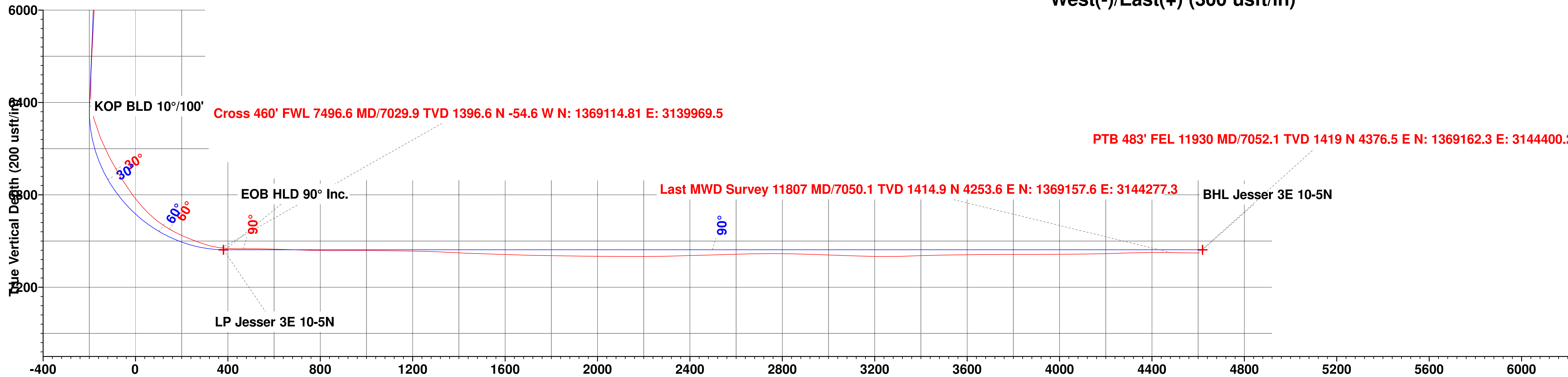
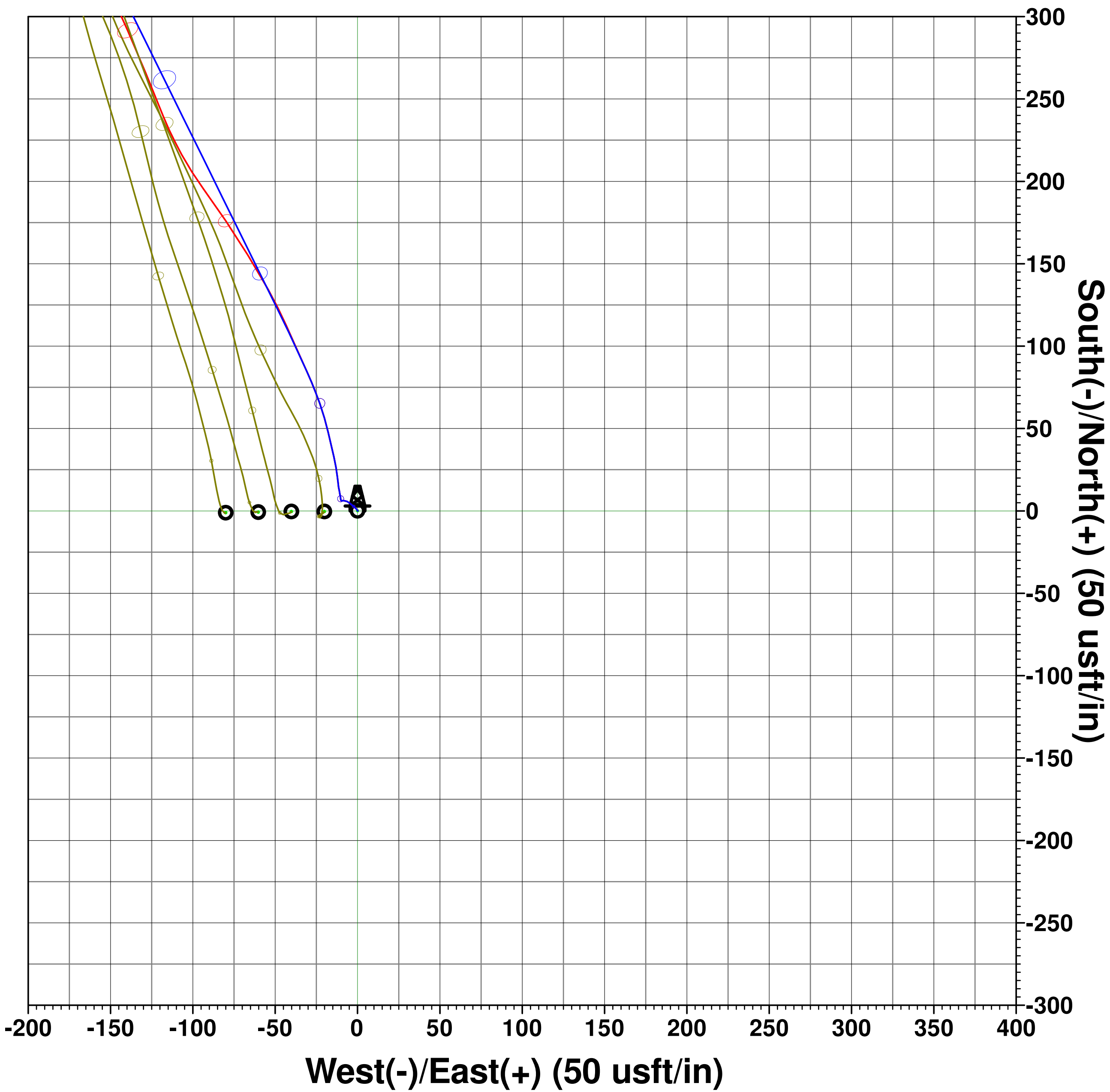
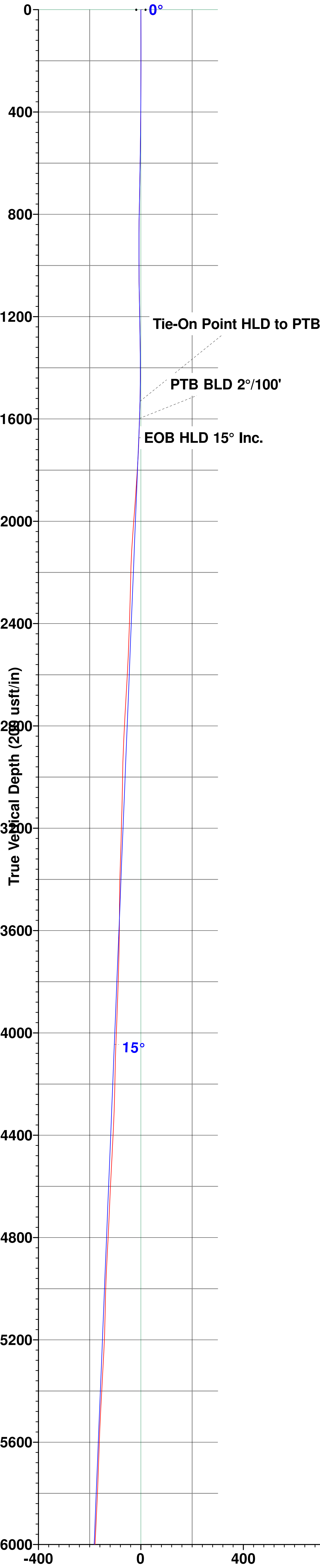


	Northing	Easting	Latitude	Longitude
0.0	0.0	1367718.66	3140032.03	40° 20' 30.120 N 104° 59' 51.504 W

Planned Section Details									
Sec	MD	Inc	Azi	TVD	+N/-S	+E/-W	Dleg	TFace	VSect
1	1538.0	13.70	335.40	1531.2	84.6	-30.8	0.00	0.00	-3.6
2	1607.0	13.70	335.40	1598.2	99.5	-37.6	0.00	0.00	-5.5
3	1684.7	15.20	333.76	1673.5	117.0	-45.9	2.00	-16.06	-8.1
4	6599.4	15.20	333.76	6416.2	1272.8	-615.6	0.00	0.00	-199.2
5	7566.5	90.00	90.21	7038.0	1421.9	-46.0	10.00	115.65	388.8
6	12012.7	90.00	90.21	7038.0	1405.5	4400.1	0.00	0.00	4619.1



PROJECT DETAILS: WELD COUNTY, COLORADO (NAD 83)
Geodetic System: US State Plane 1983
Datum: North American Datum 1983
Ellipsoid: GRS 1980
Zone: Colorado Northern Zone
System Datum: Mean Sea Level
Local North: True



Vertical Section at 72.29° (200 usft/in)

Vertical Section at 72.29° (200 usft/in)