

OPERATOR: **Extraction Oil & Gas**

WELL NAME: **Jesser 3E-10-5N**

FIELD NAME: DJ Basin - Wattenberg

DRILLING RIG: Patterson 901

API #: 05-123-45660

LAT/LONG: 40.3417, -104.99764

SURFACE HOLE: NWSW S3-T4N-R68W, 2314' FSL, 436' FWL

BOTTOM HOLE: S3-T4N-R68W, 1320' FNL, 460' FEL



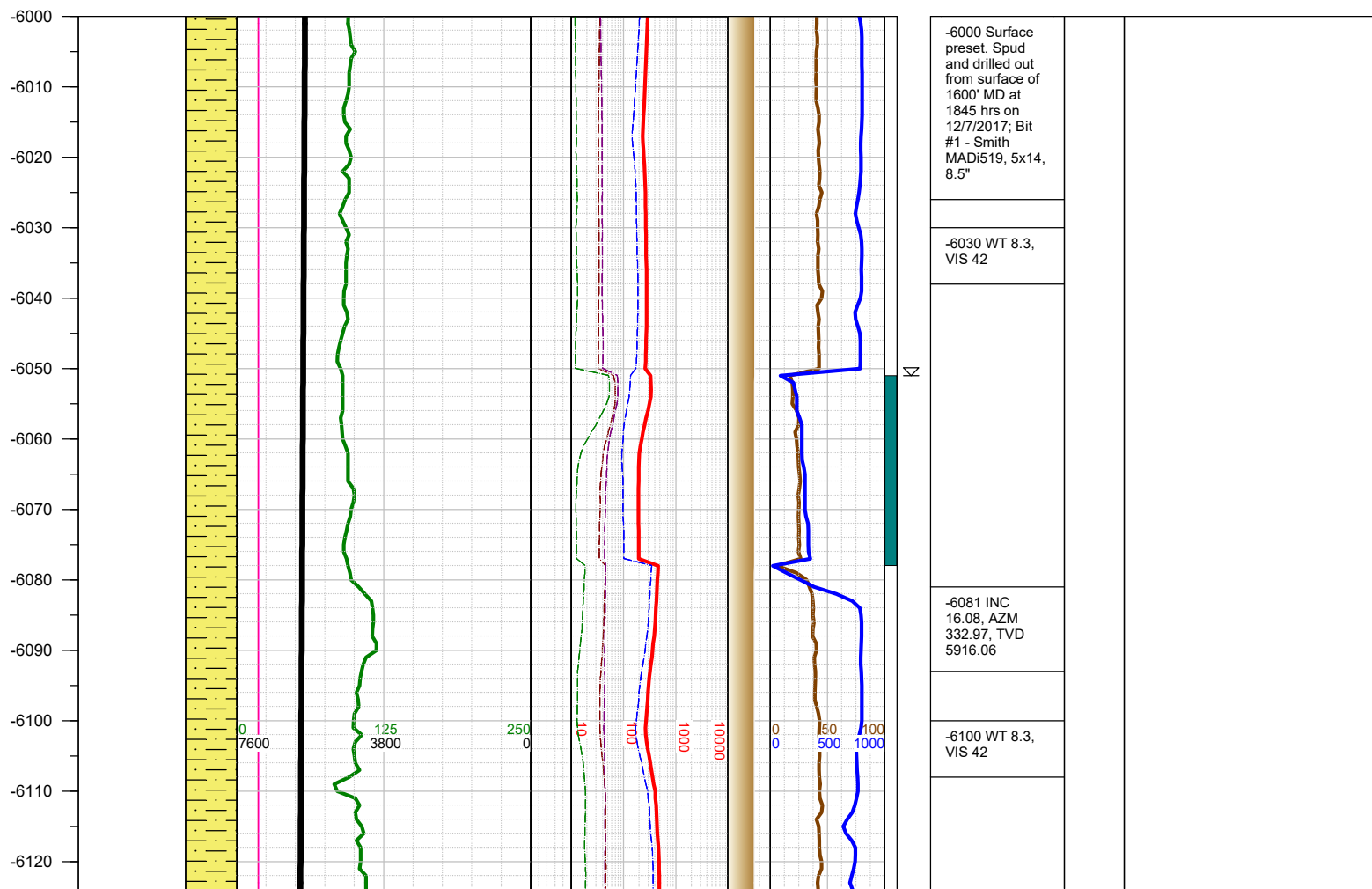
Earth Science Agency, LLC

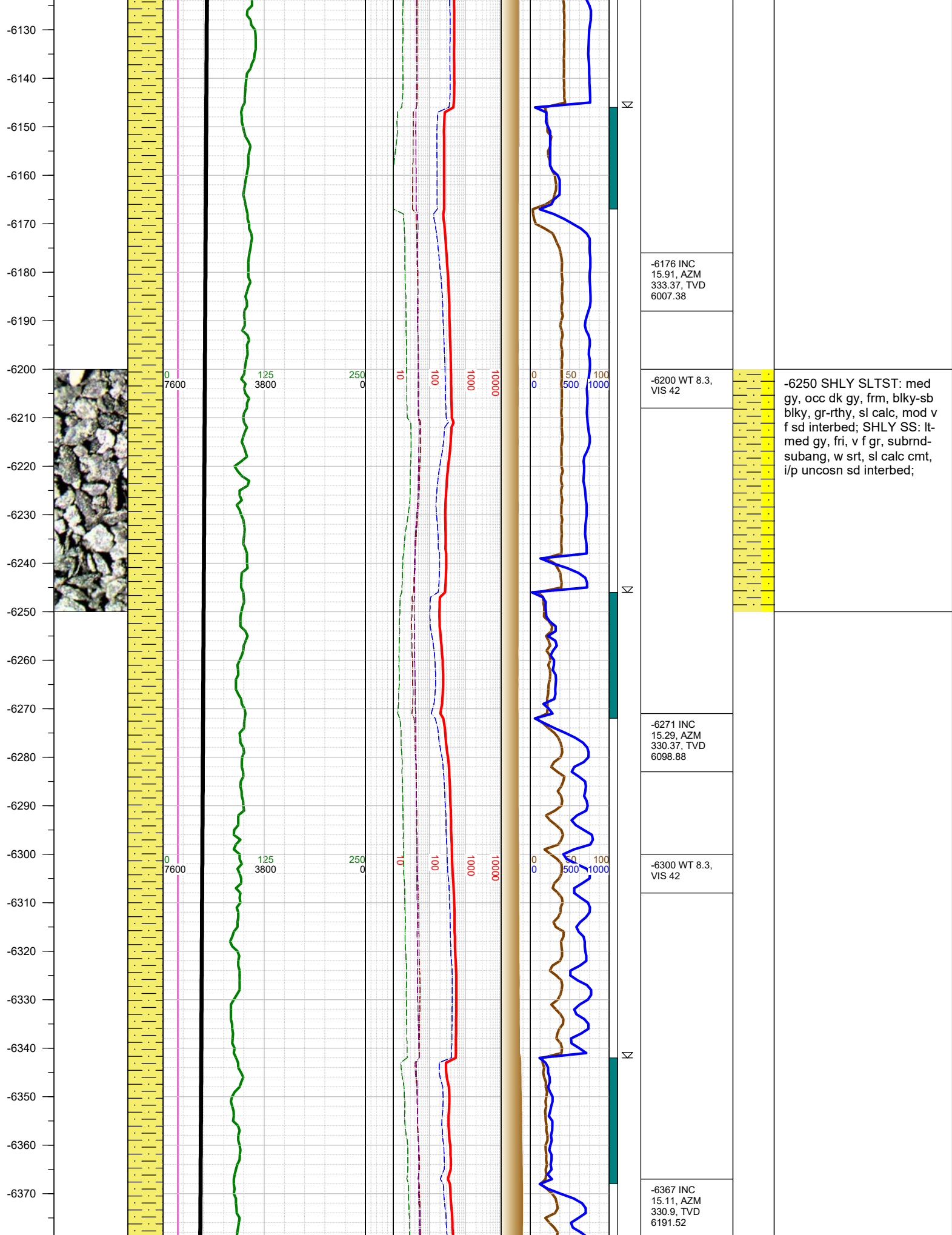
COUNTY: Weld  
STATE: Colorado  
GROUND ELEVATION: 5113'  
KELLY BUSHING: 5142'  
DRILLING FLUID: OBM  
TVD VS. MD: 7051' / 11930'  
SPUD DATE: December 7, 2017  
TD DATE: December 9, 2017  
  
DEPTHS LOGGED: 6000' - 11930'  
DATES LOGGED: December 8, 2017 - December 9, 2017  
GEOLOGISTS: Blake Eatherton, Dominic Pitre  
SCALE: 5" = 100'

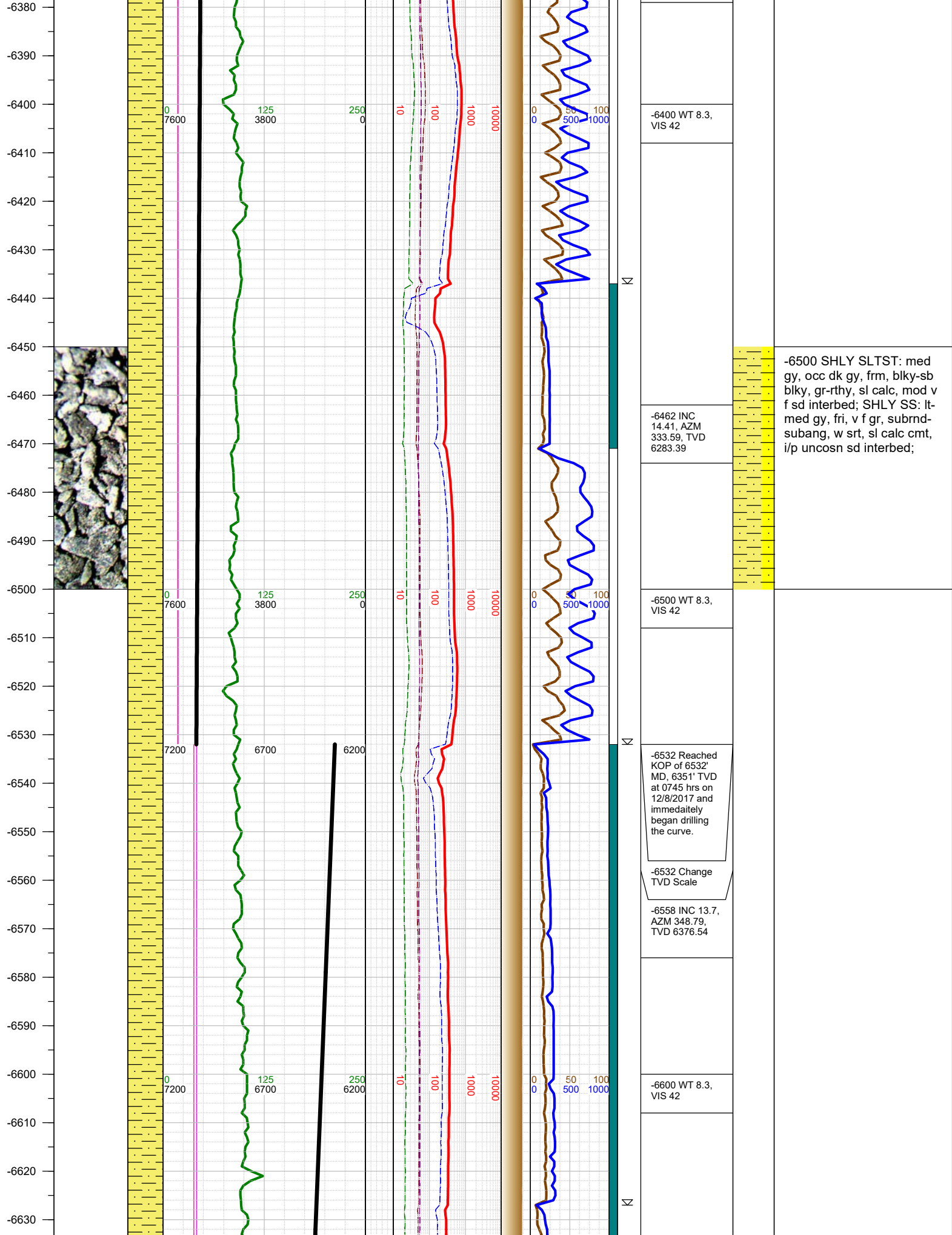
#### LEGEND

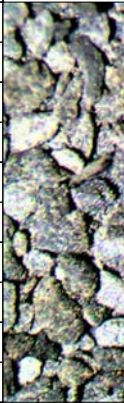
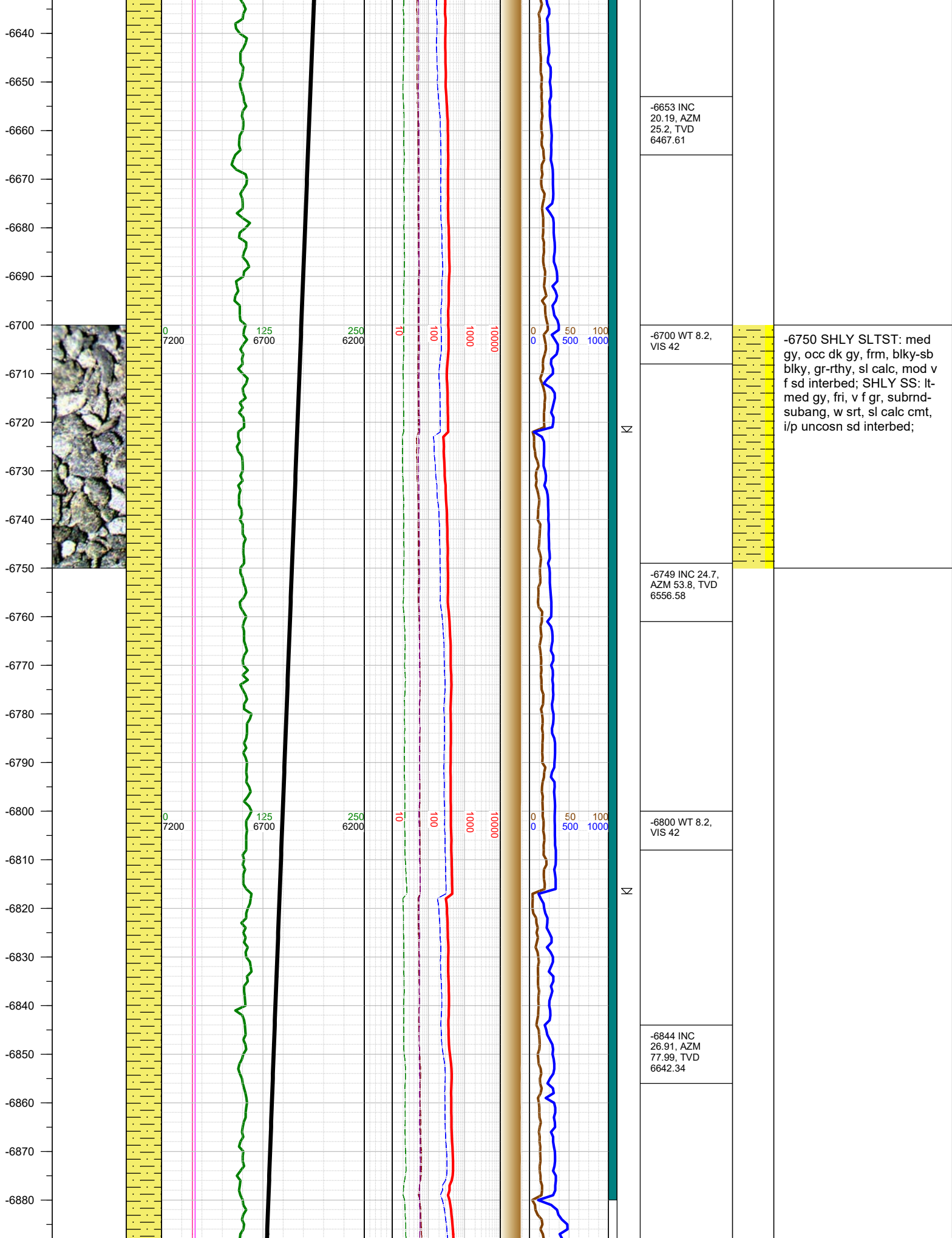


FORMATION CONNECTION MIDNIGHT NEW BIT GAS SHOW FAULT



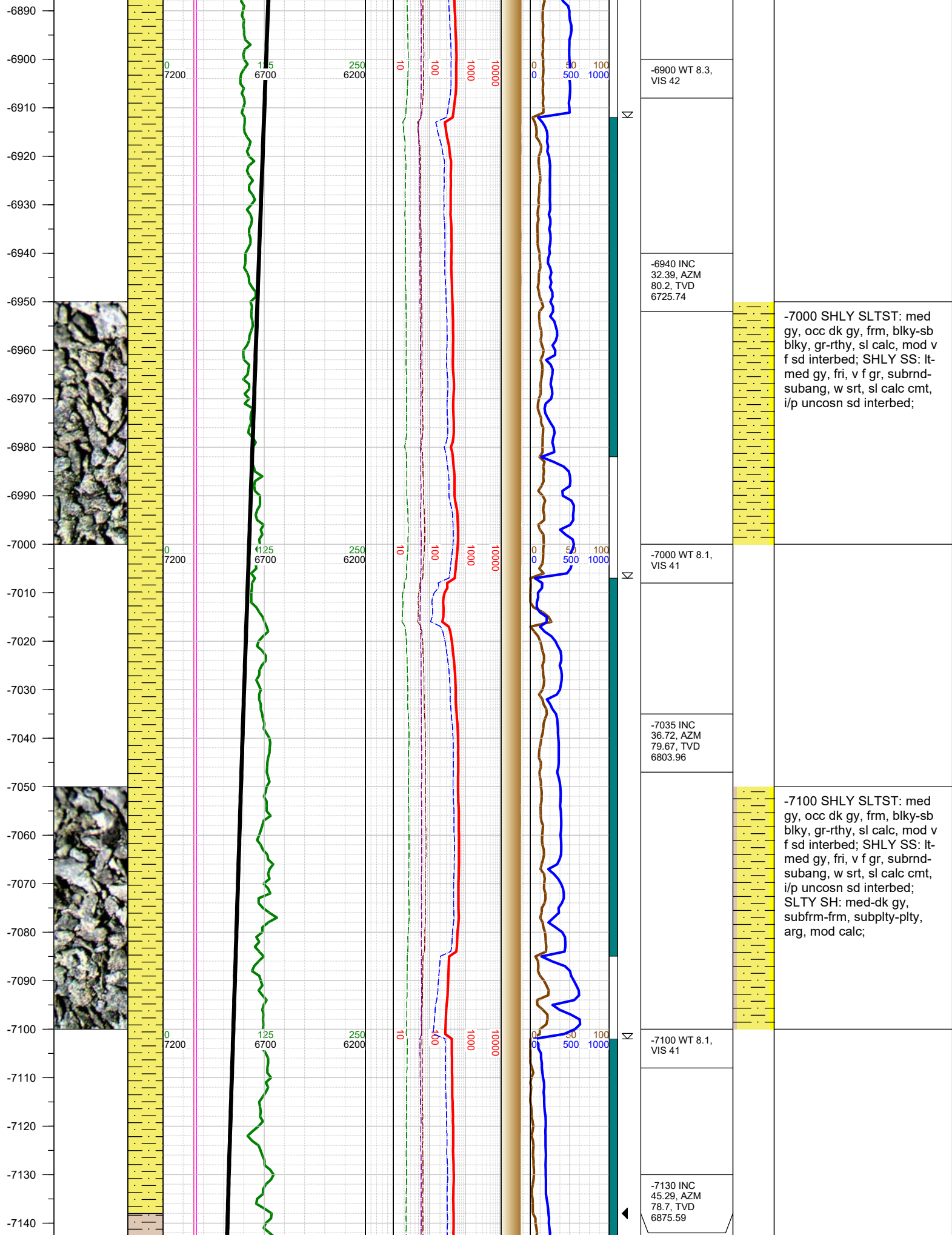


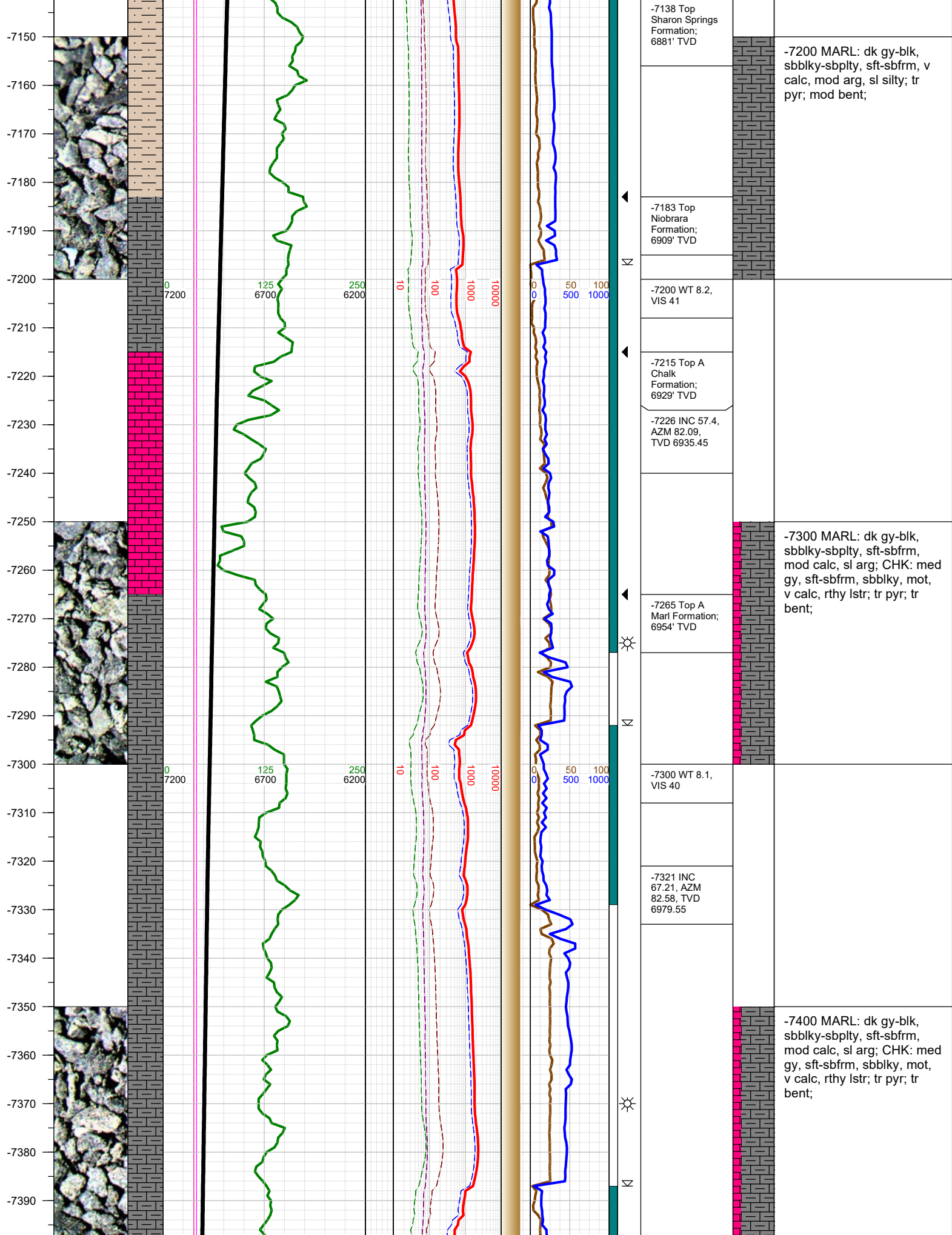


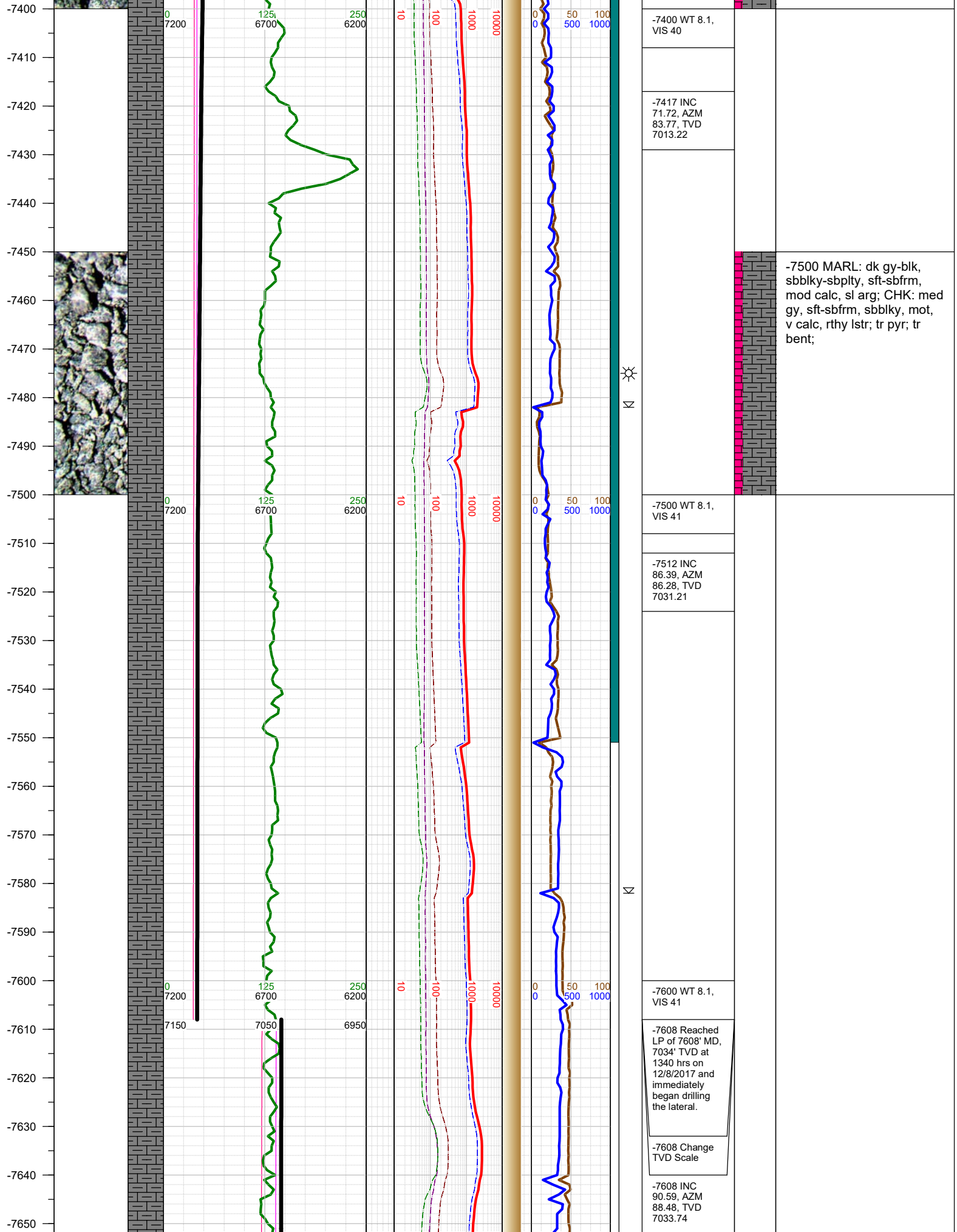


-6750 SHLY SLTST: med gy, occ dk gy, frm, blkly-sb blkly, gr-rthy, sl calc, mod v f sd interbed; SHLY SS: lt-med gy, fri, v f gr, subrnd-subang, w srt, sl calc cmt, i/p uncosn sd interbed;

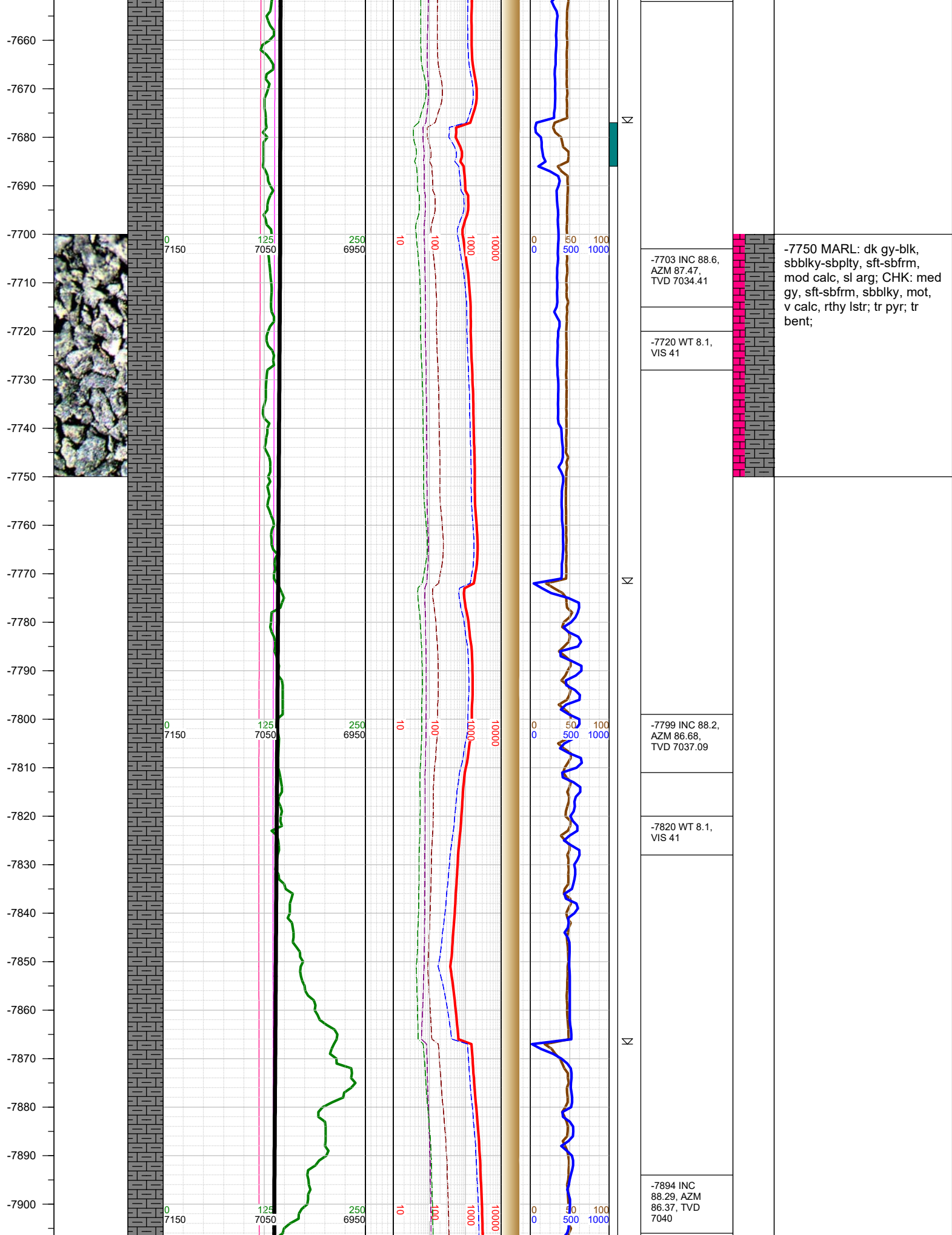




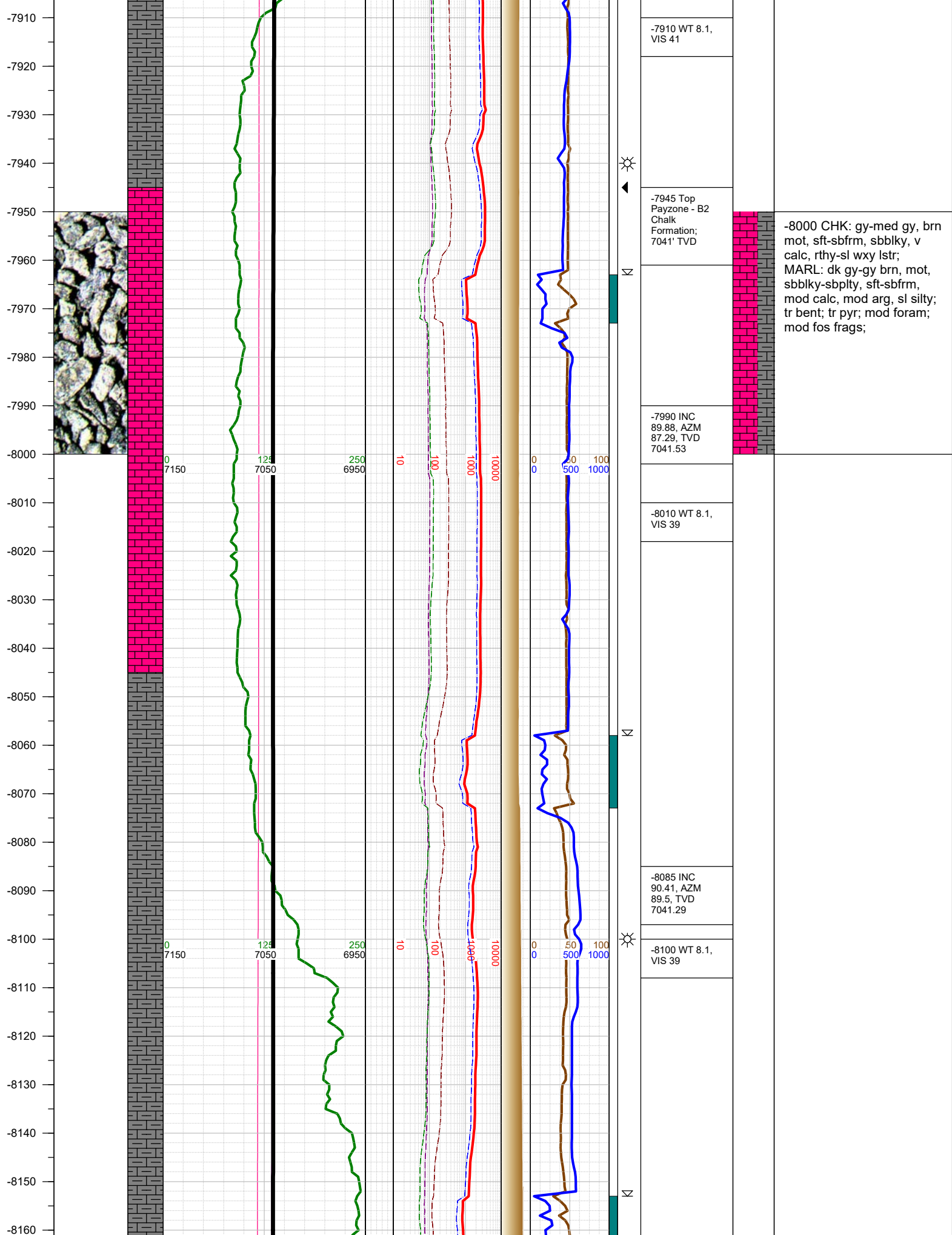


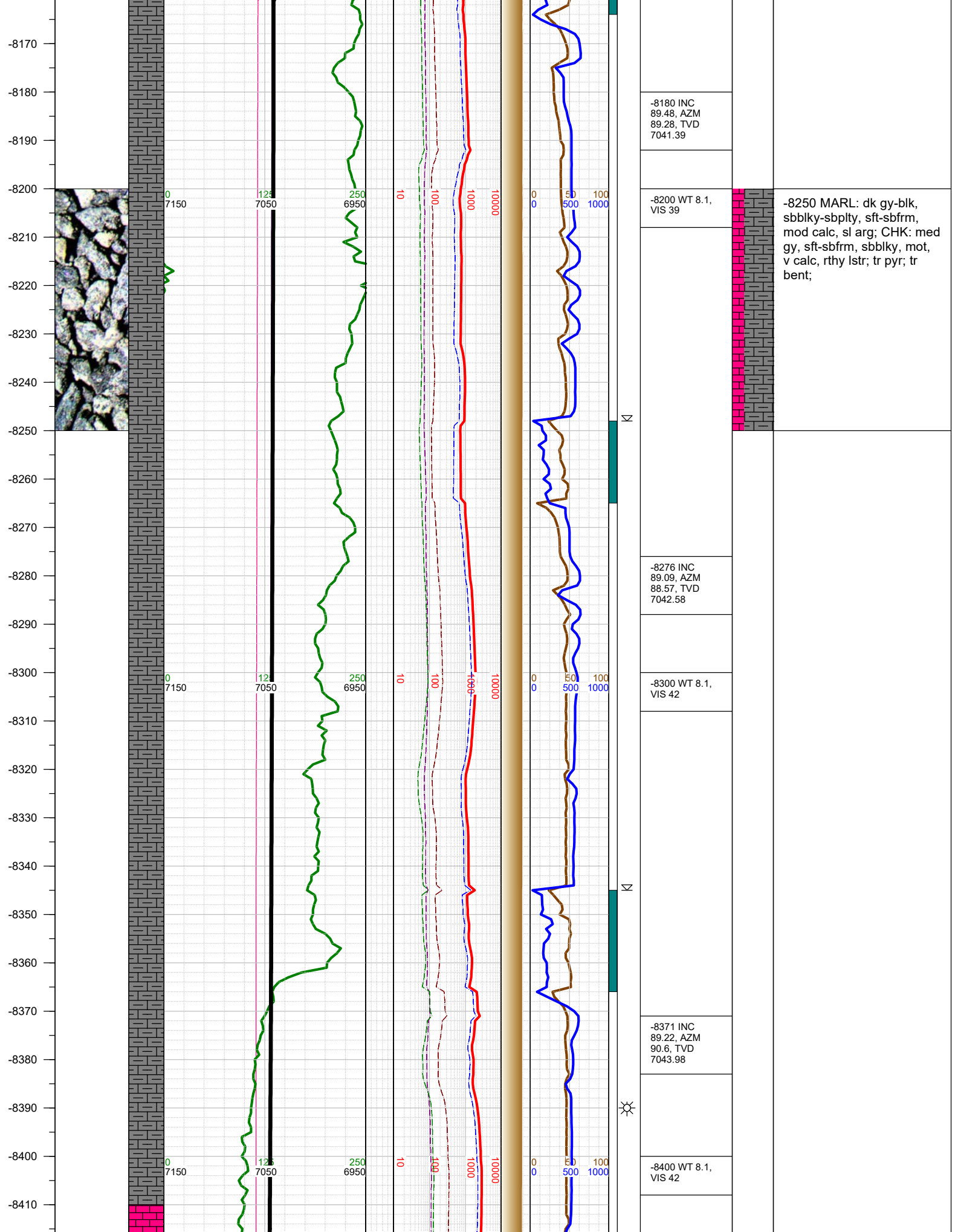


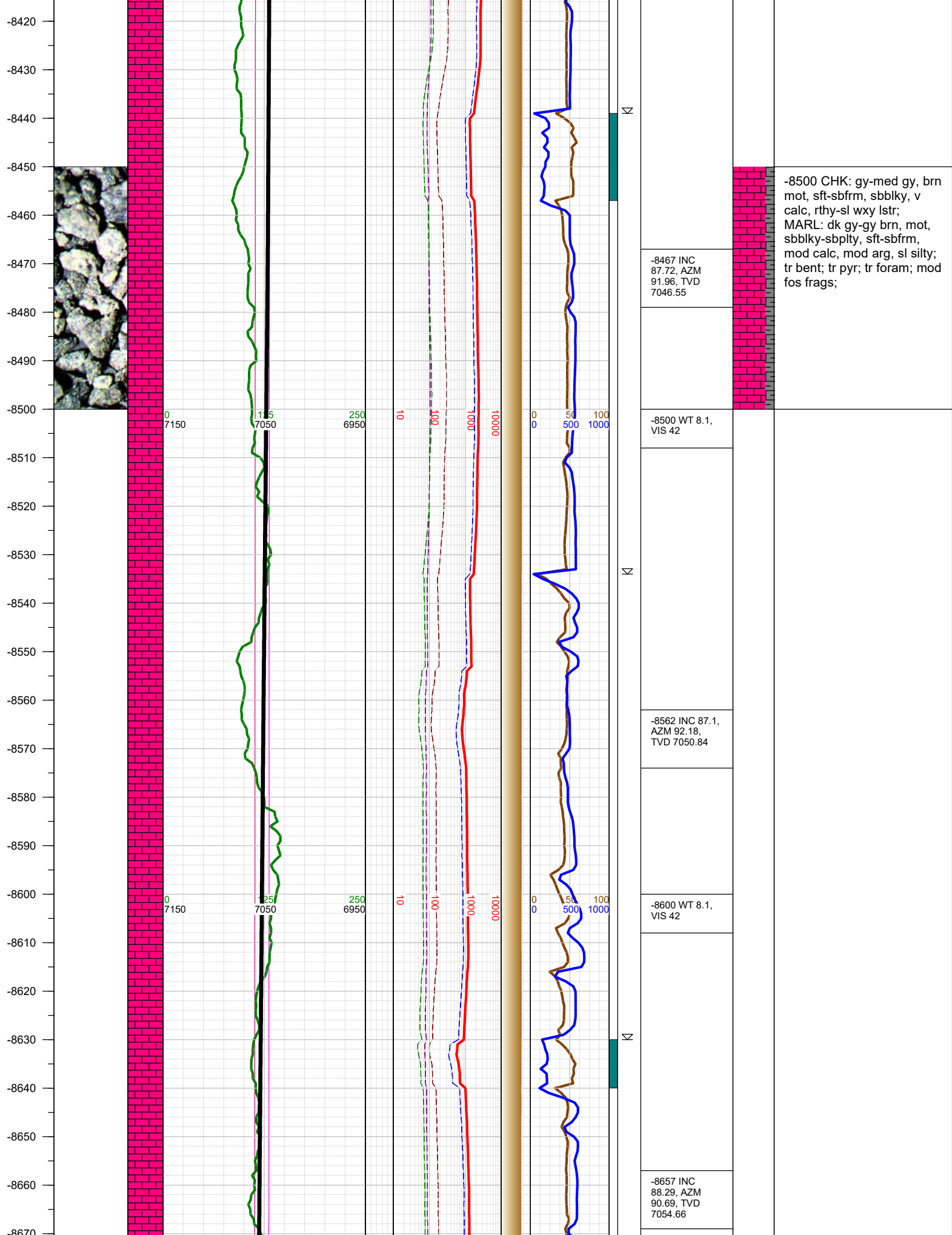




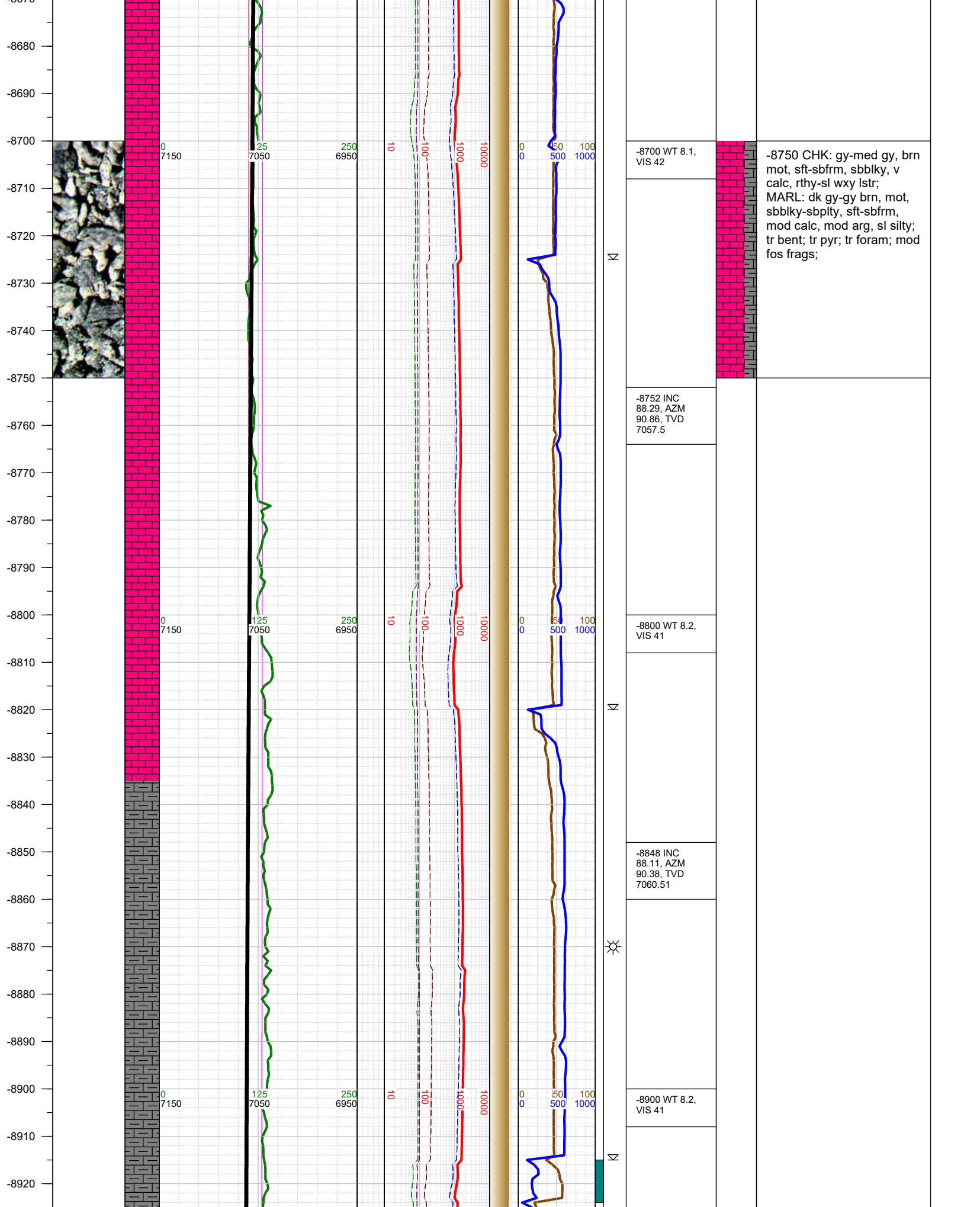


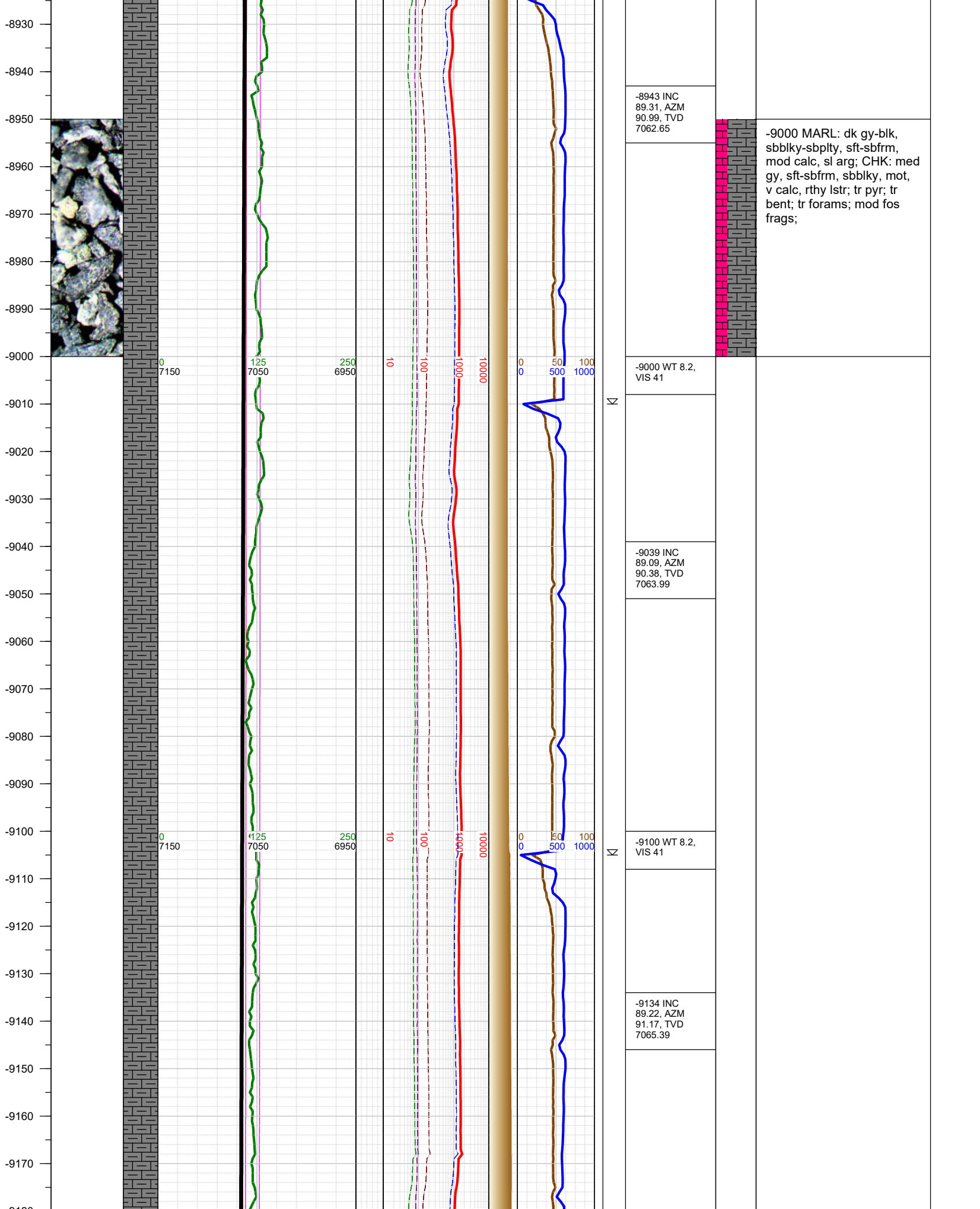


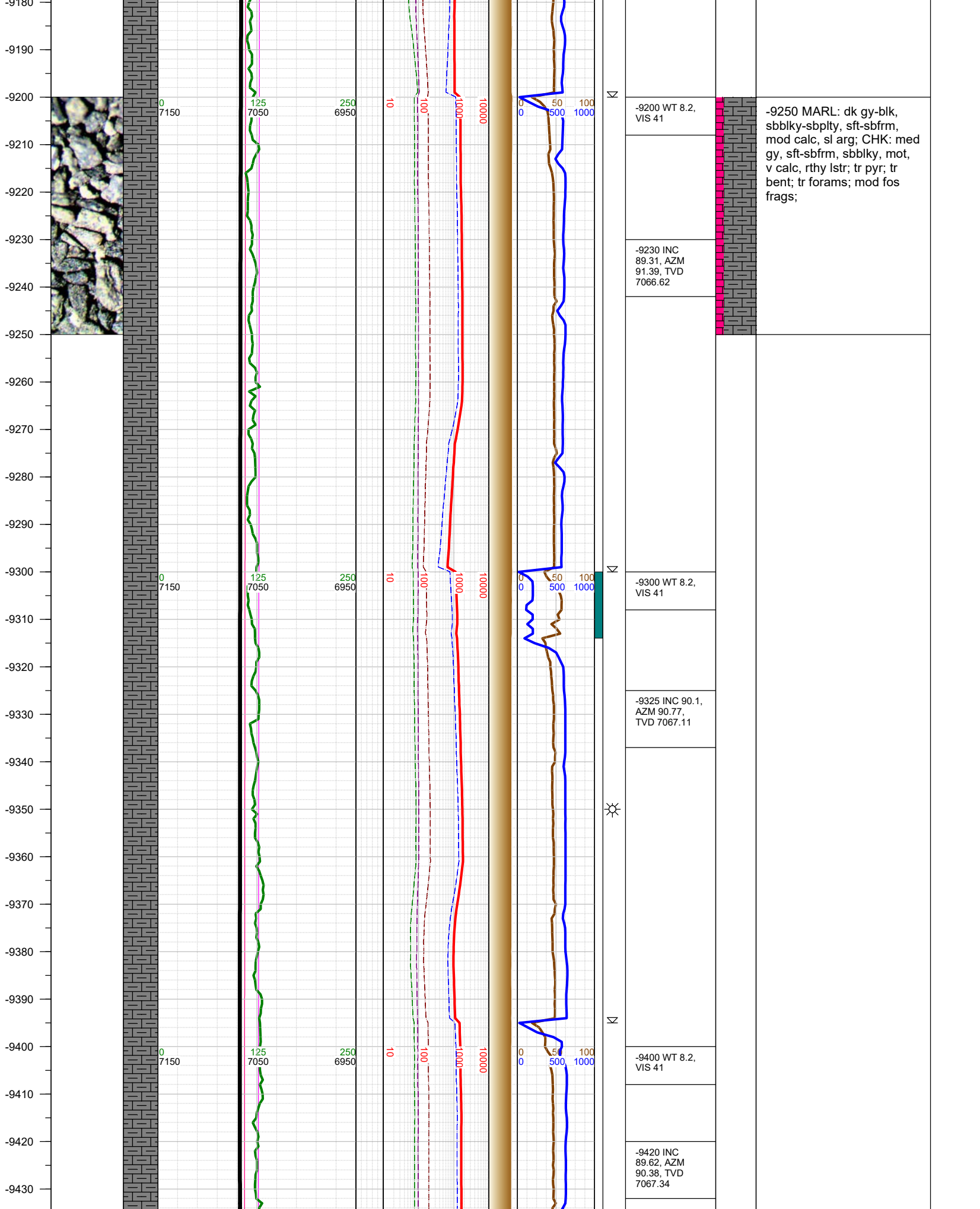




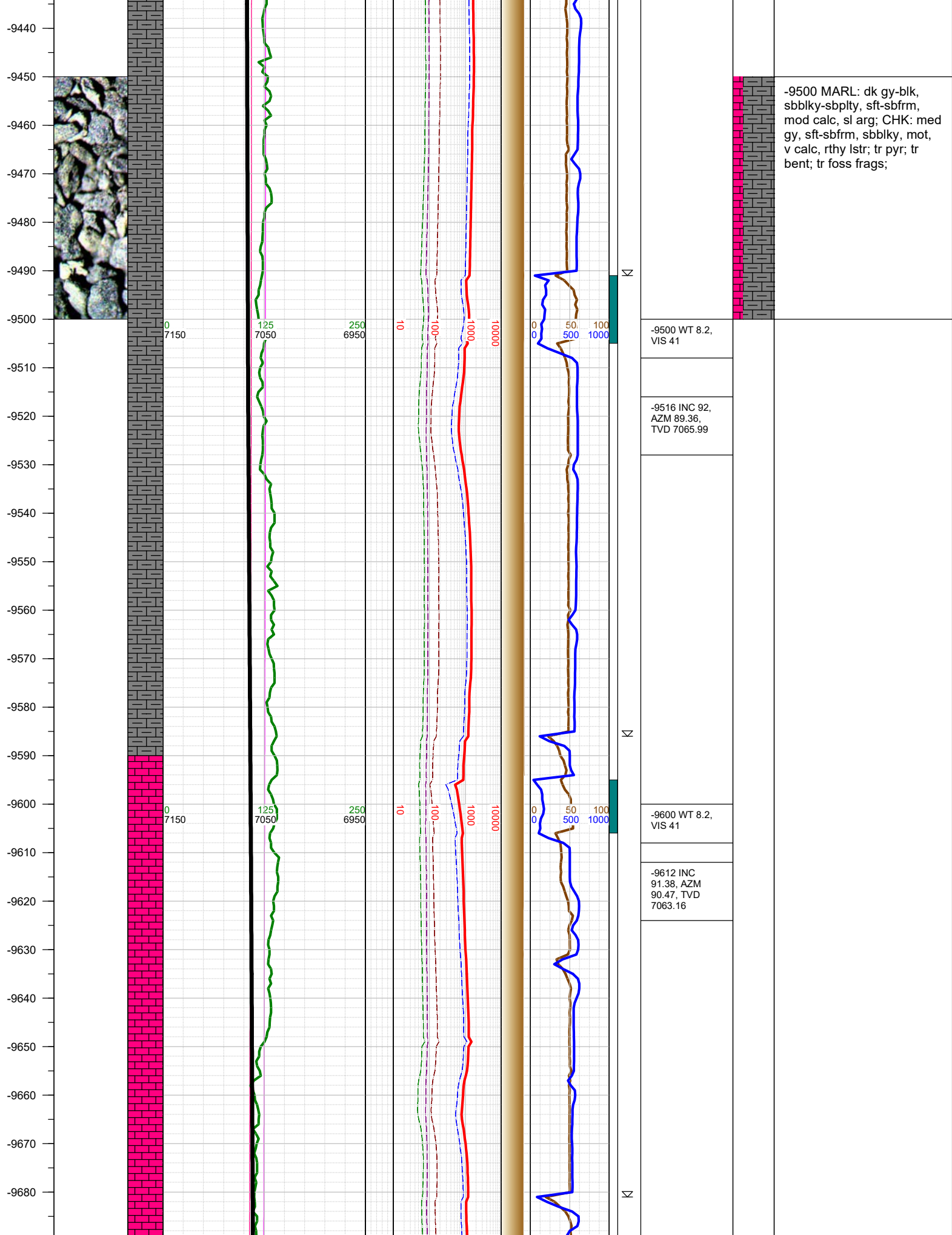


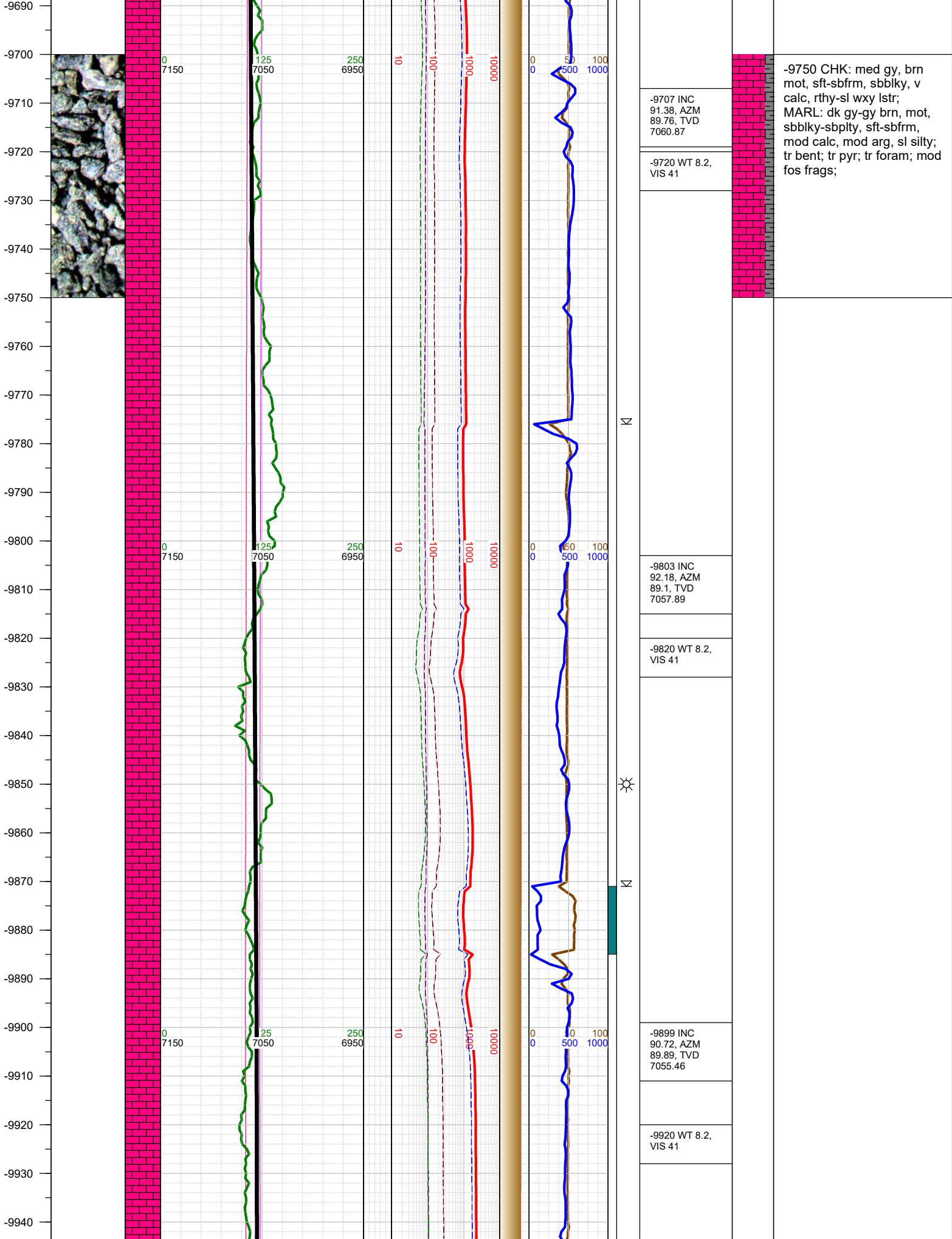


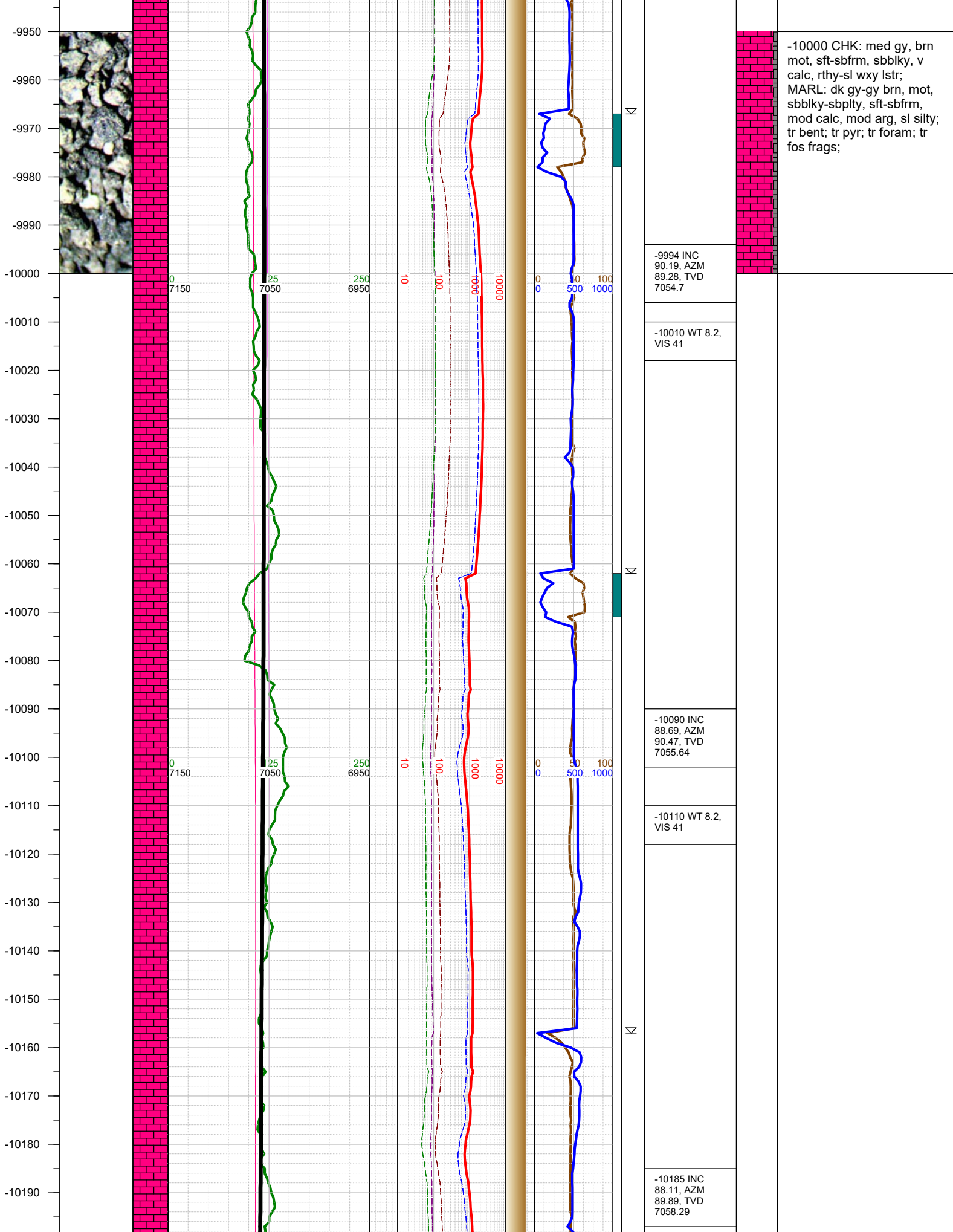




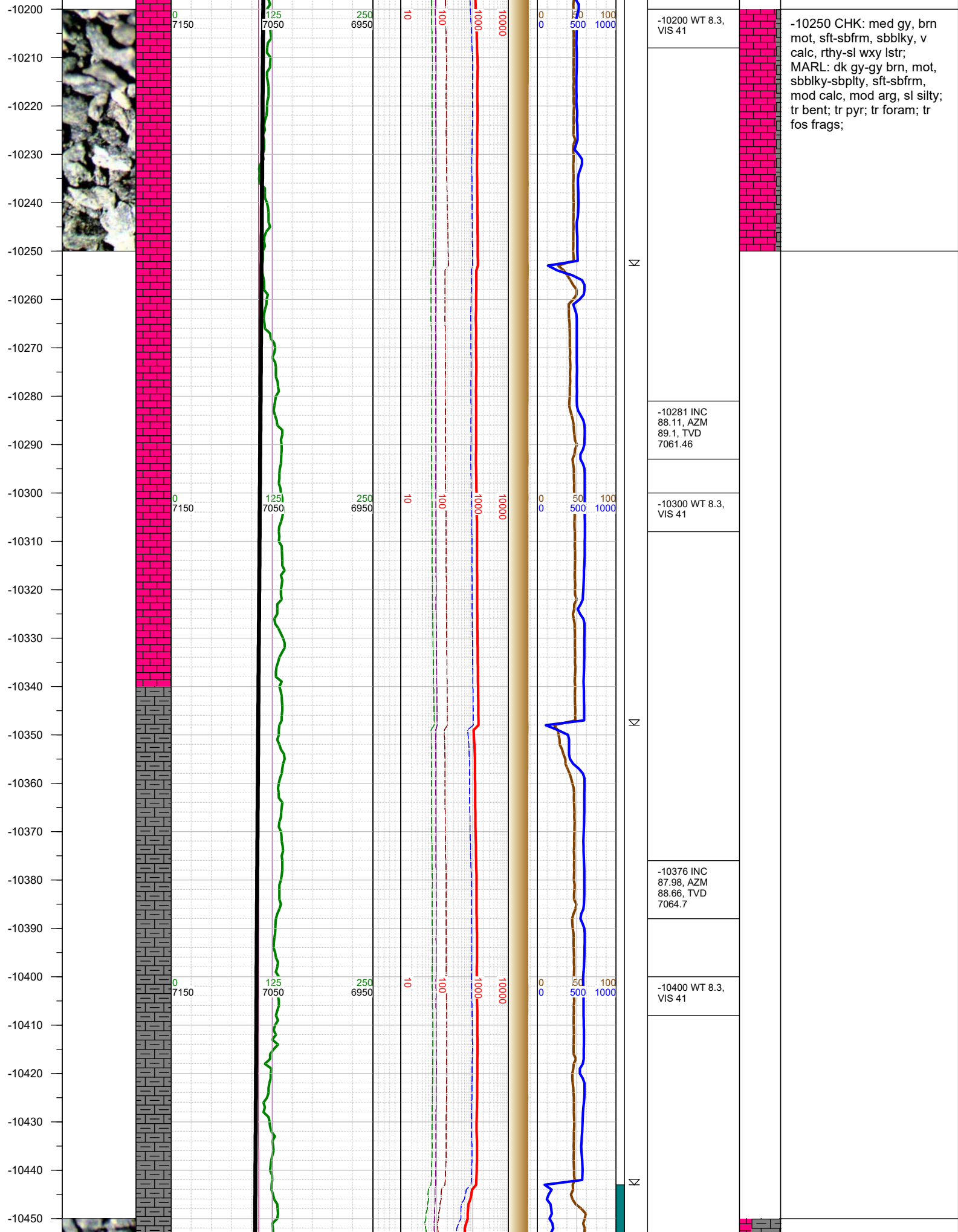


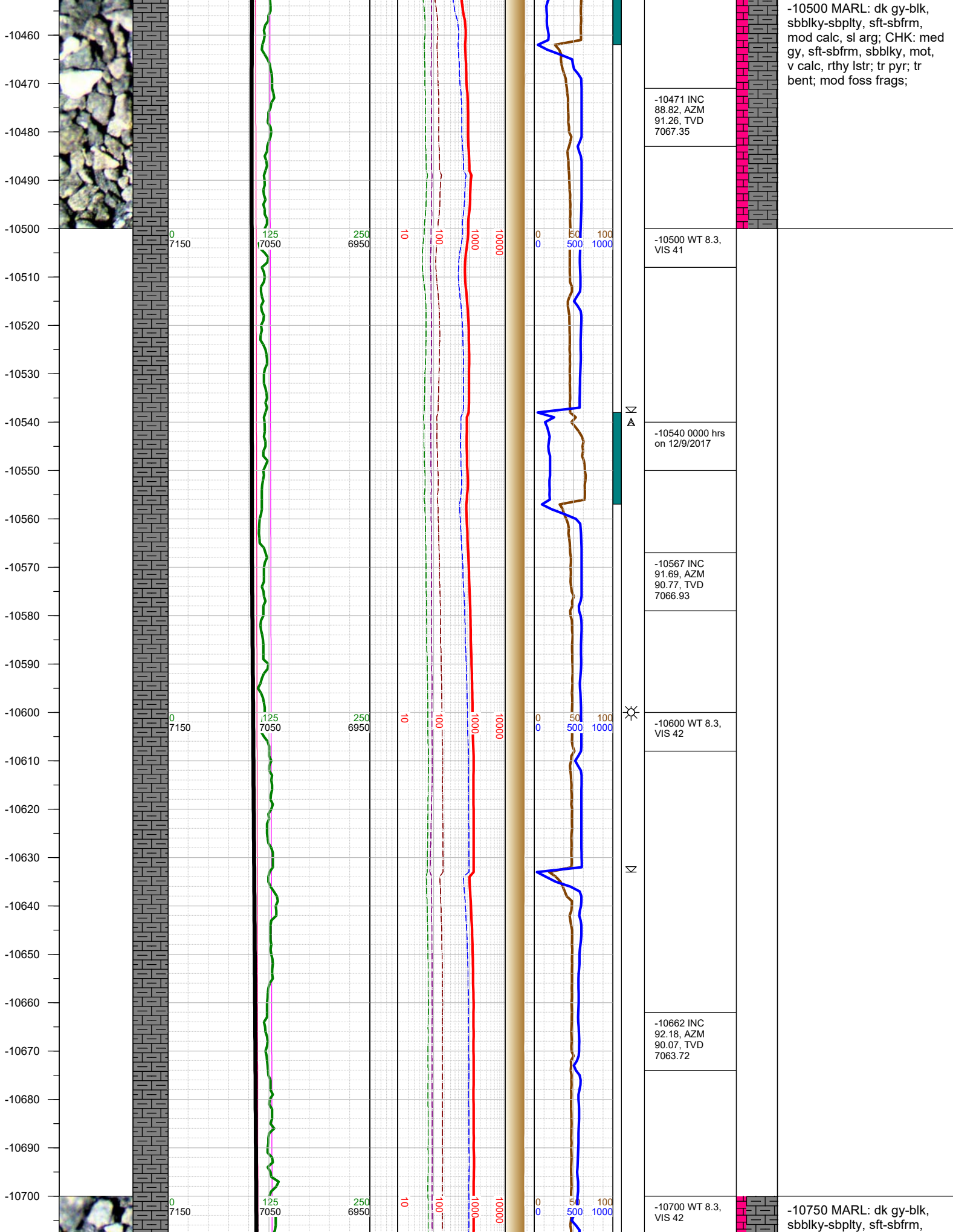












-10500 MARL: dk gy-blk, sbblky-sbply, sft-sbfrm, mod calc, sl arg; CHK: med gy, sft-sbfrm, sbblky, mot, v calc, rthy lstr; tr pyr; tr bent; mod foss frags;

-10750 MARL: dk gy-blk, sbblky-sbply, sft-sbfrm,

