

OPERATOR: **Extraction Oil & Gas**

WELL NAME: **Jesser 3E-10-3N**

FIELD NAME: DJ Basin - Wattenberg

DRILLING RIG: Patterson 901

API #: 05-123-45666

LAT/LONG: 40.341699, -104.997784

SURFACE HOLE: NWSW S3-T4N-R68W, 2314' FSL, 396' FWL

BOTTOM HOLE: S3-T4N-R68W, 660' FNL, 460' FEL



Earth Science Agency, LLC

COUNTY: Weld

STATE: Colorado

GROUND ELEVATION: 5114'

KELLY BUSHING: 5143'

DRILLING FLUID: OBM

TVD VS. MD: 7010' / 12055'

SPUD DATE: December 1, 2017

TD DATE: December 2, 2017

DEPTHS LOGGED: 6000' - 12055'

DATES LOGGED: December 1, 2017 - December 3, 2017

GEOLOGISTS: Blake Eatherton, Dominic Pitre

SCALE: 5" = 100'

LEGEND

CHALK

LIMESTONE

SHALY LIMESTONE

MARLSTONE

CALCAREOUS SHALE

DOLOMITE

SHALE

SILTY SHALE

SHALY SILTSTONE

SHALY SANDSTONE

SANDSTONE

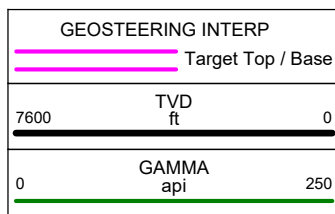
ANHYDRITE

FORMATION \approx CONNECTION Δ MIDNIGHT NEW BIT GAS SHOW FAULT

MEASURED DEPTH (FT)

PHOTOS

MUDLOGGER INTERP



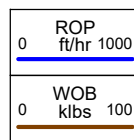
F > B

GAS

Total
C1
C2
C3
C4

Units - Log Scale

MUD VOL. 800 bbl

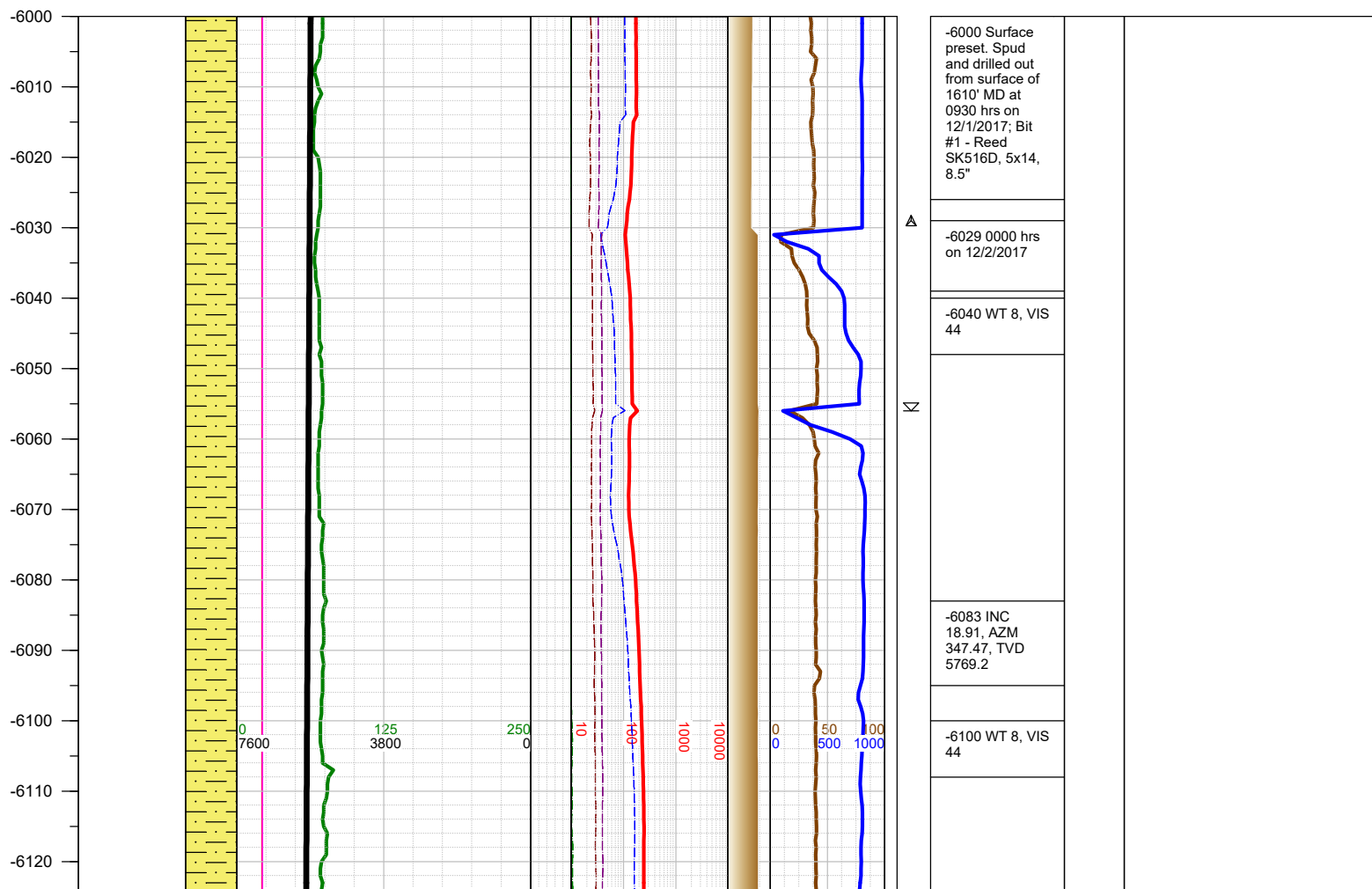


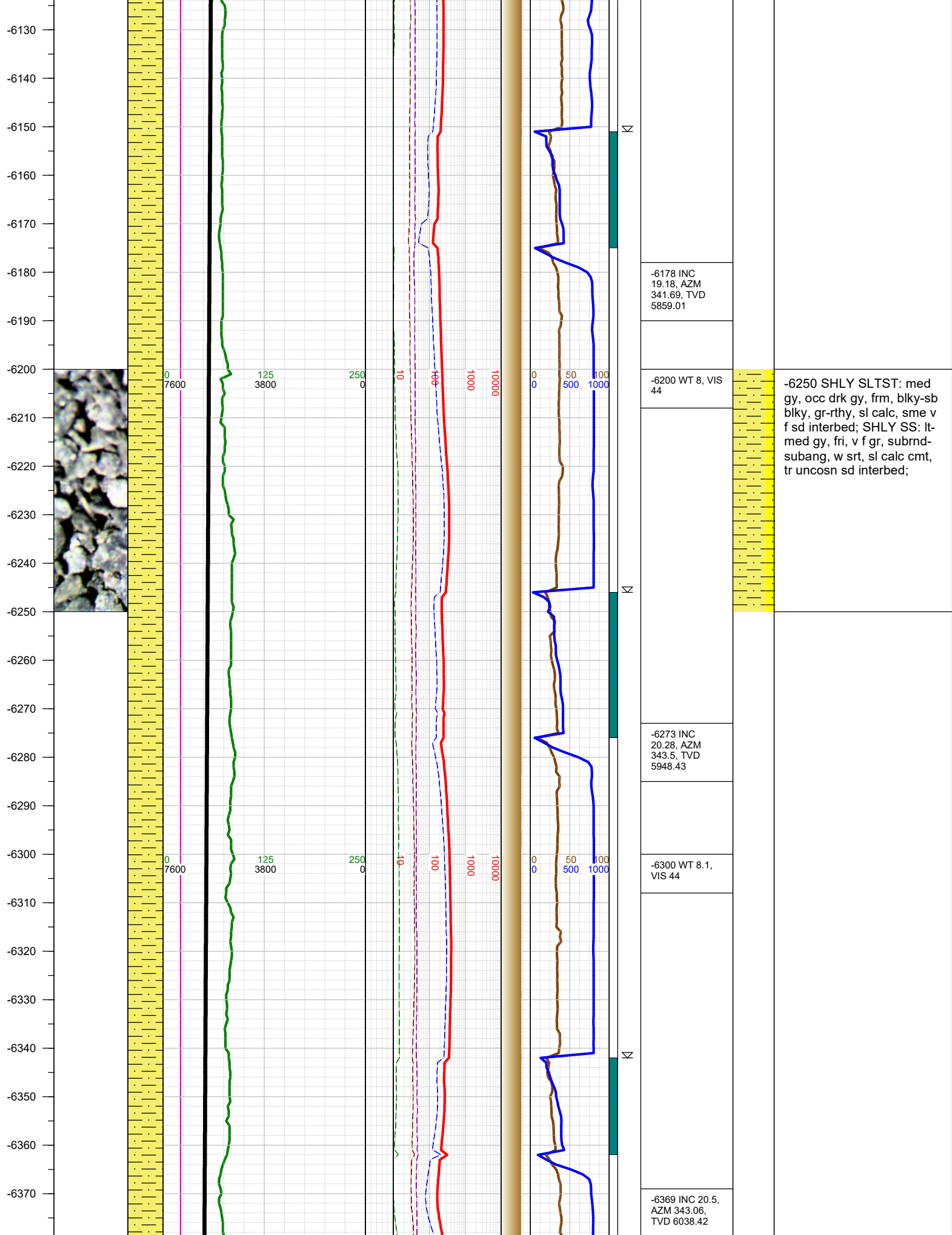
SLIDES
SYMBOLS

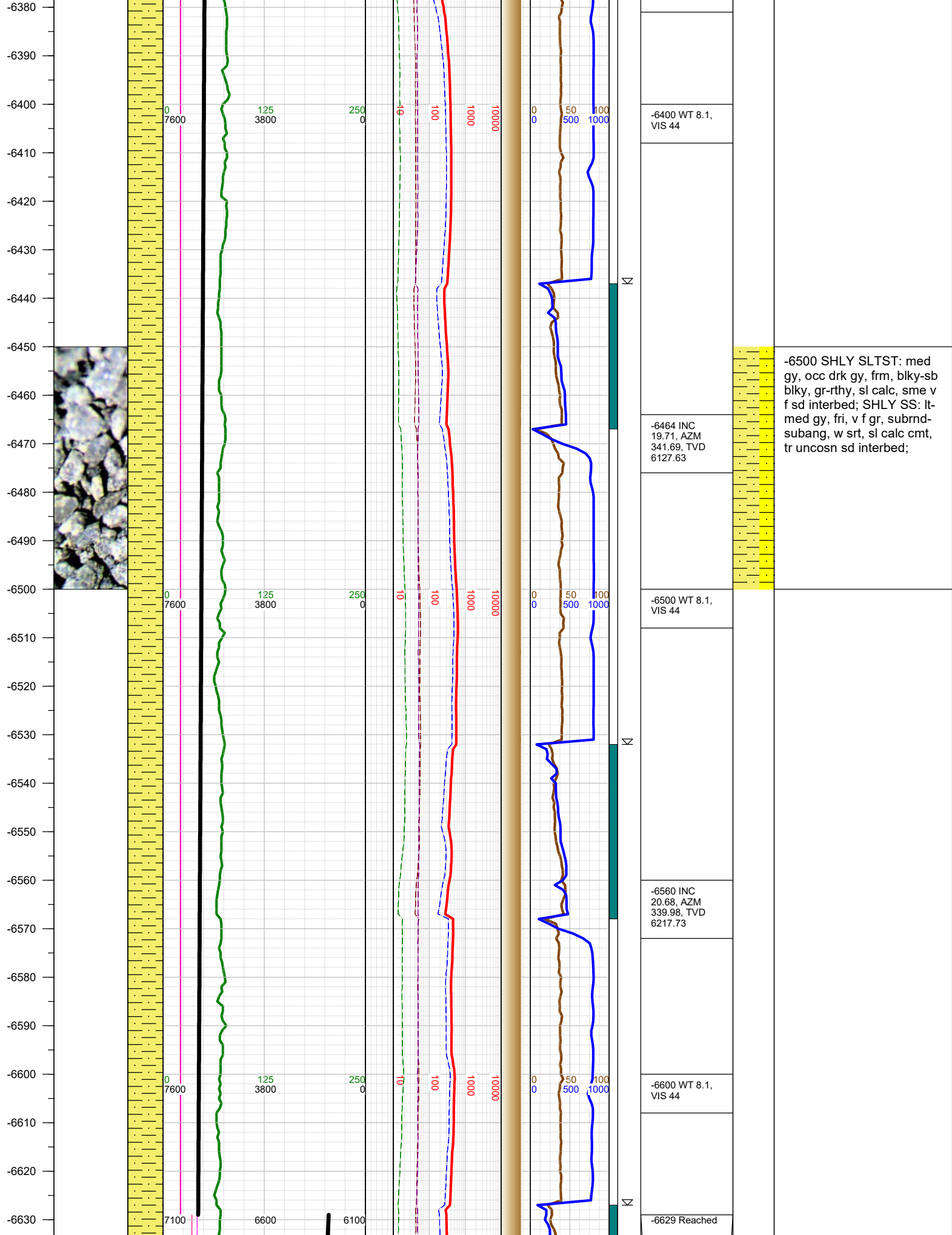
COMMENTS

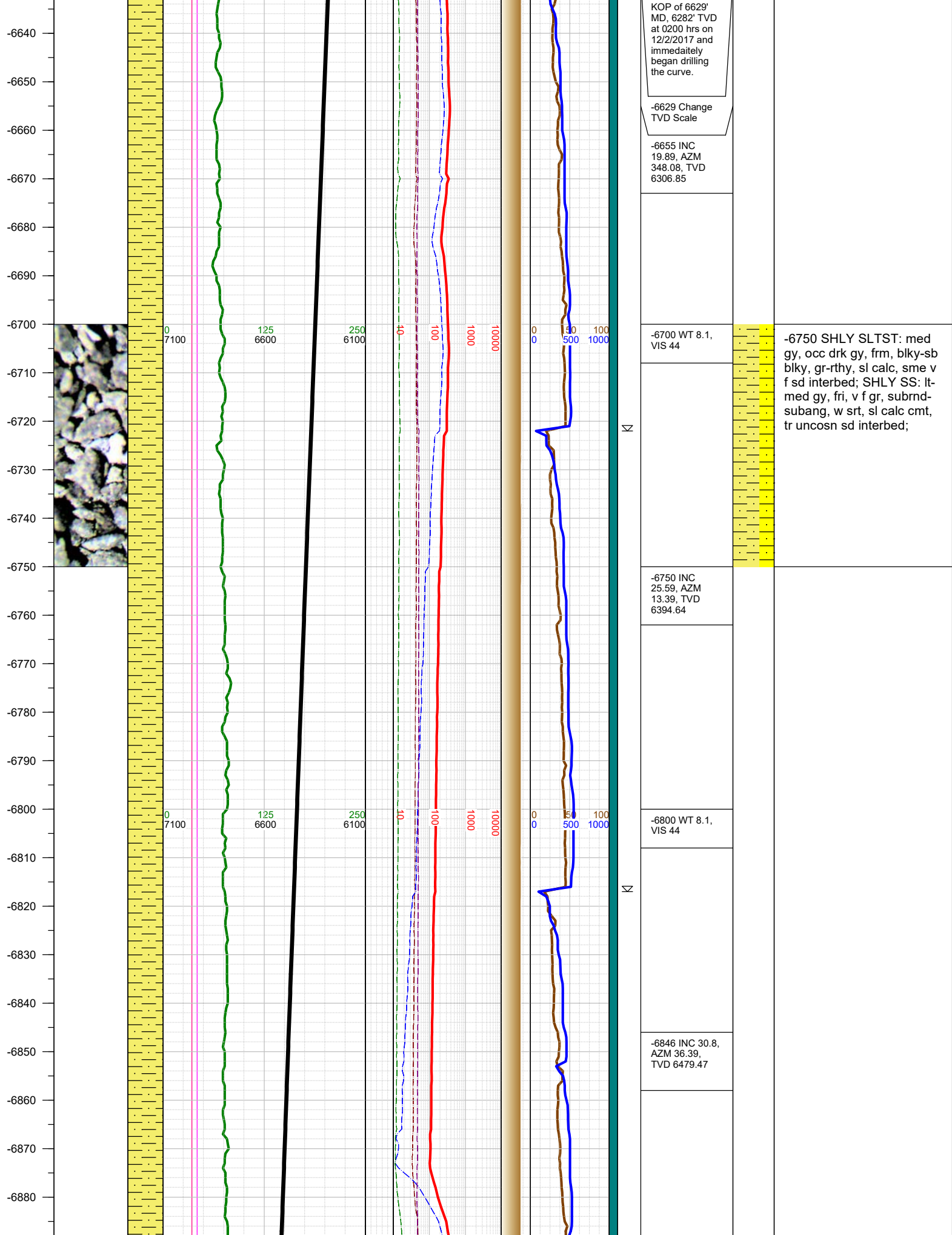
CUTTINGS %

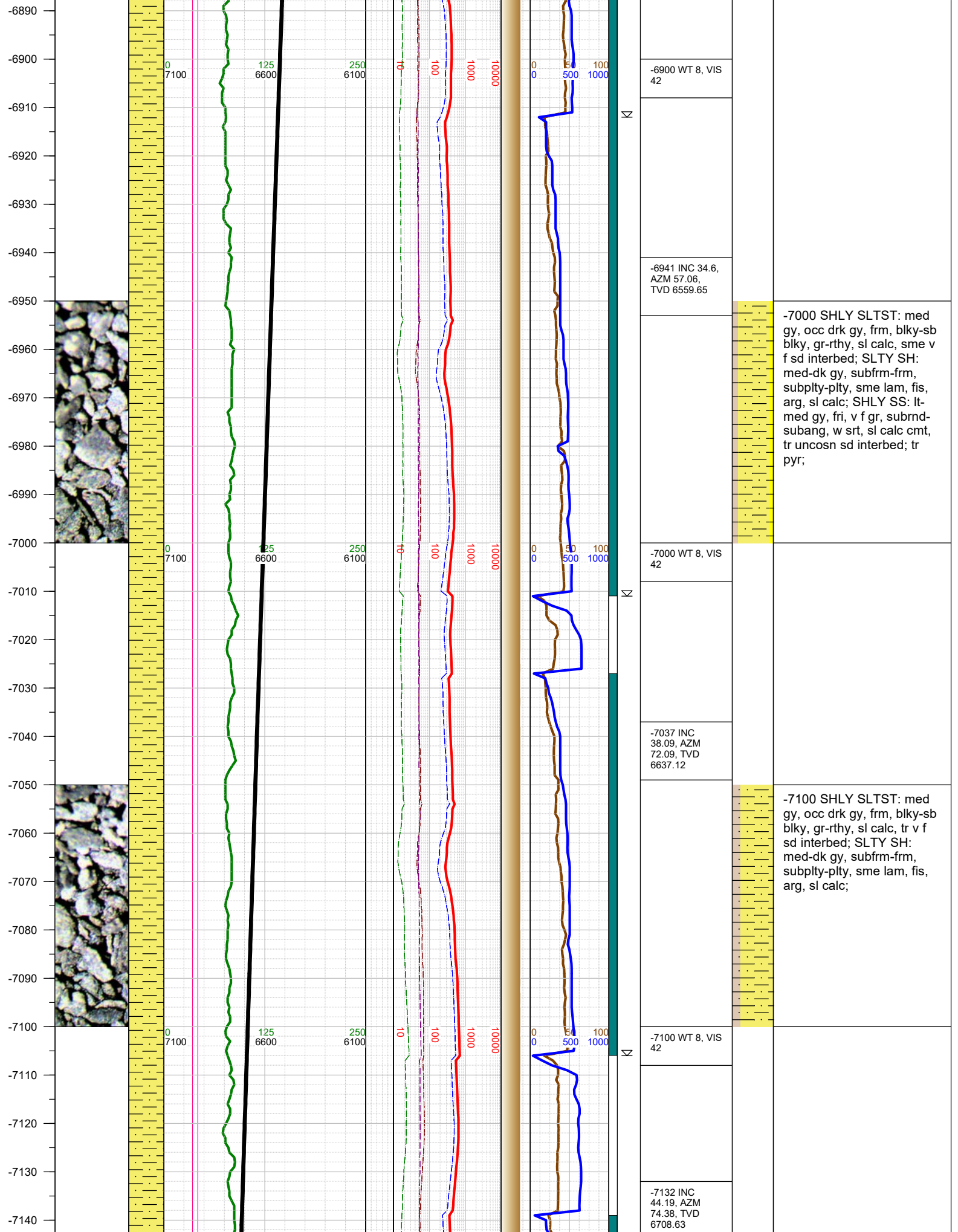
SAMPLE DESCRIPTION

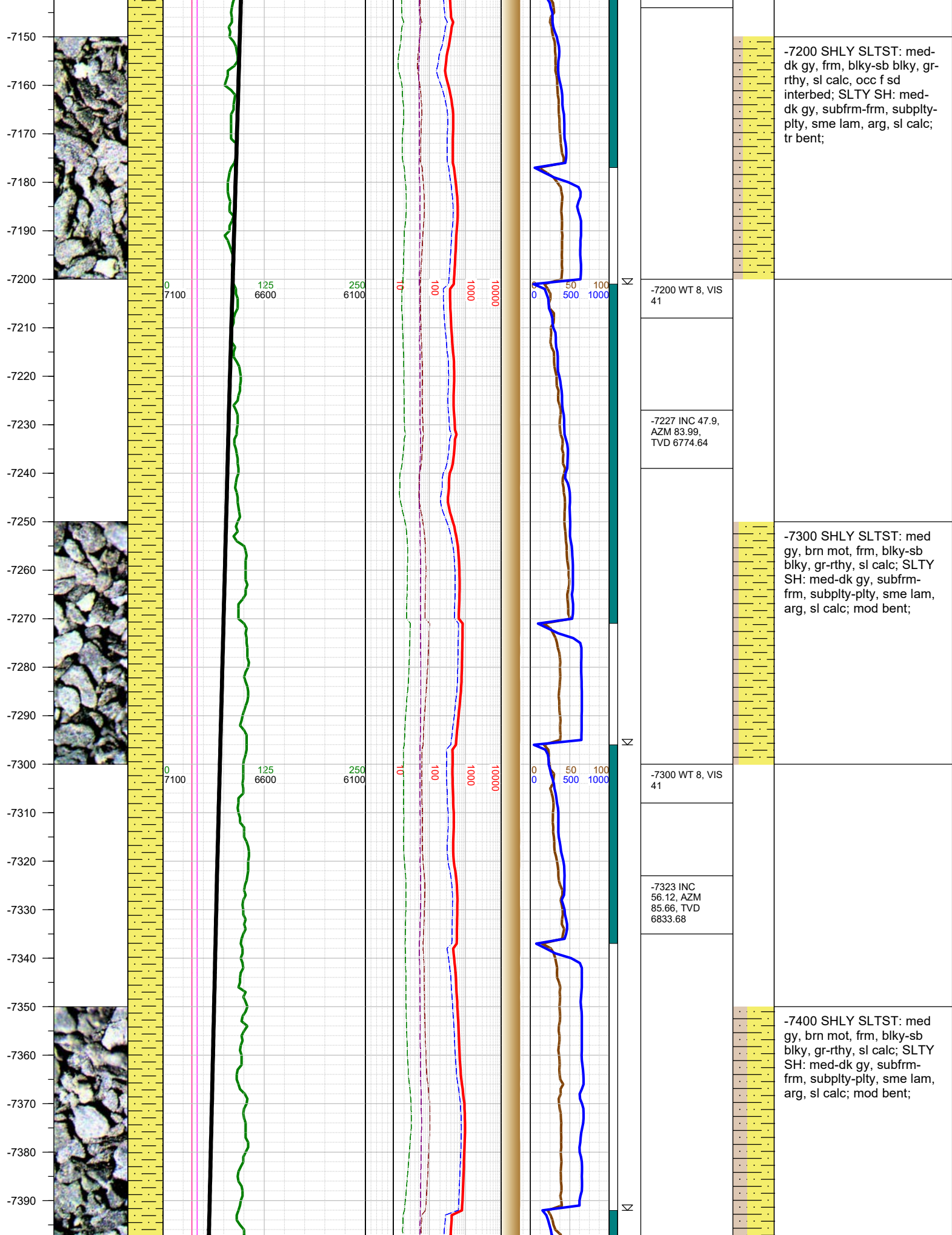


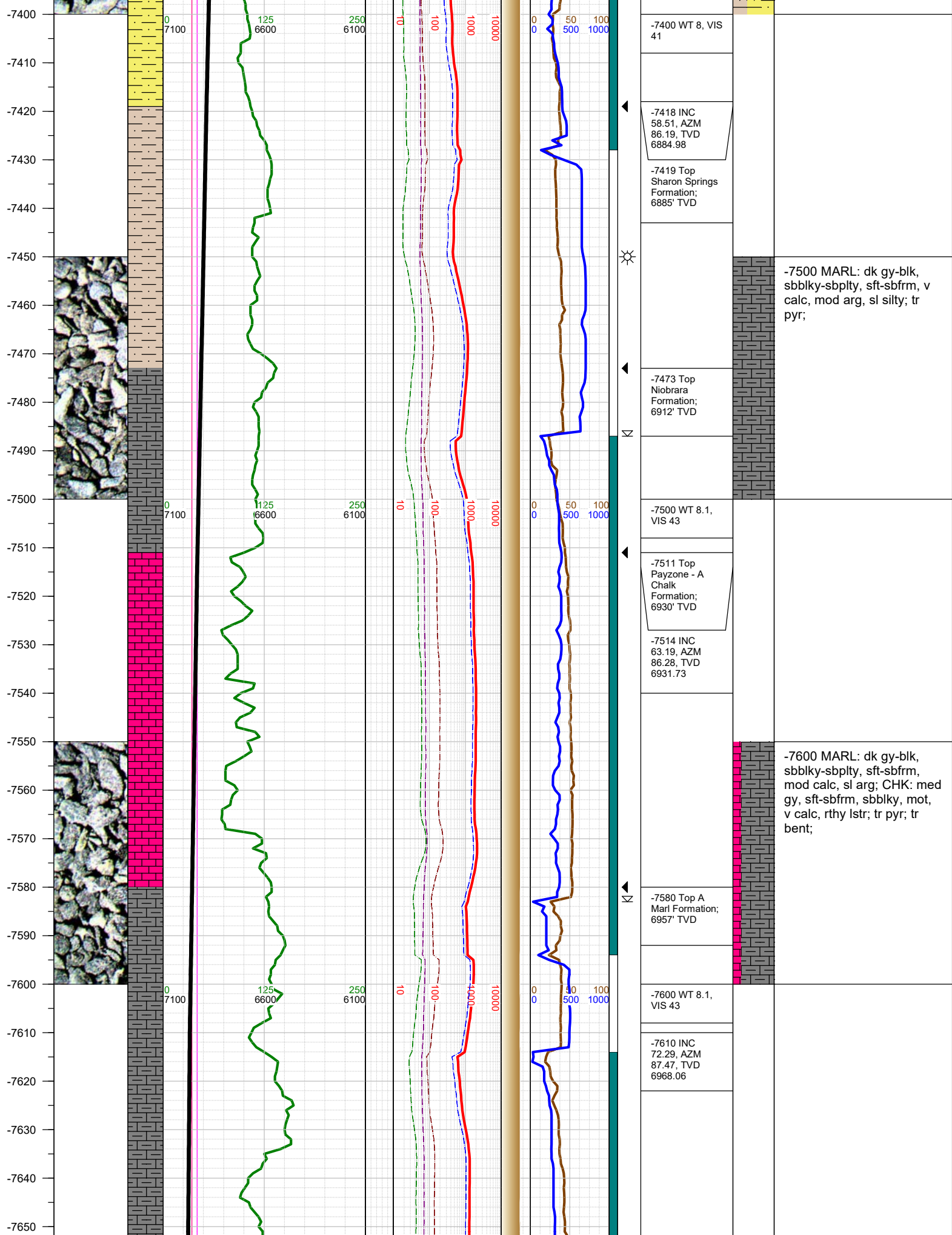


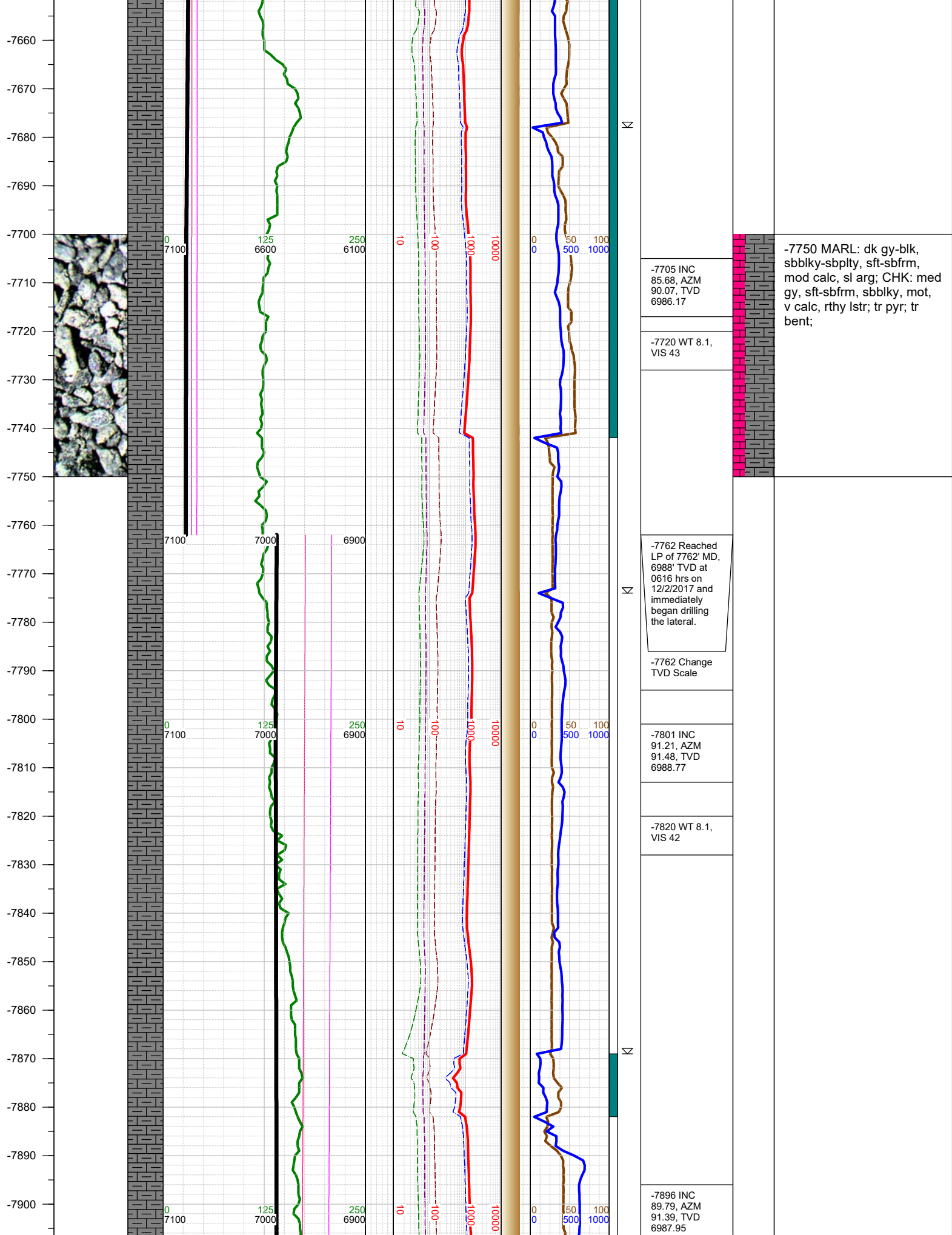


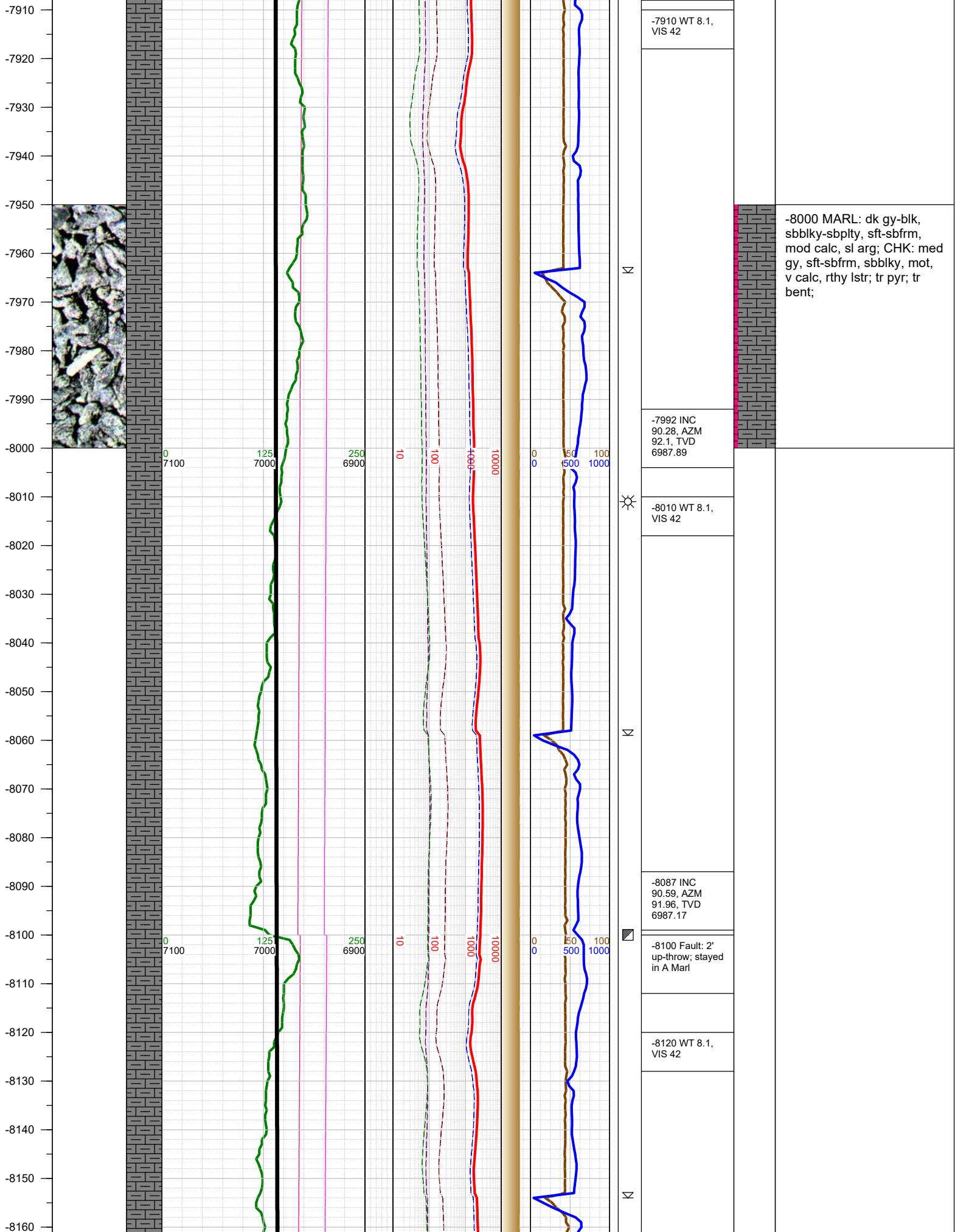


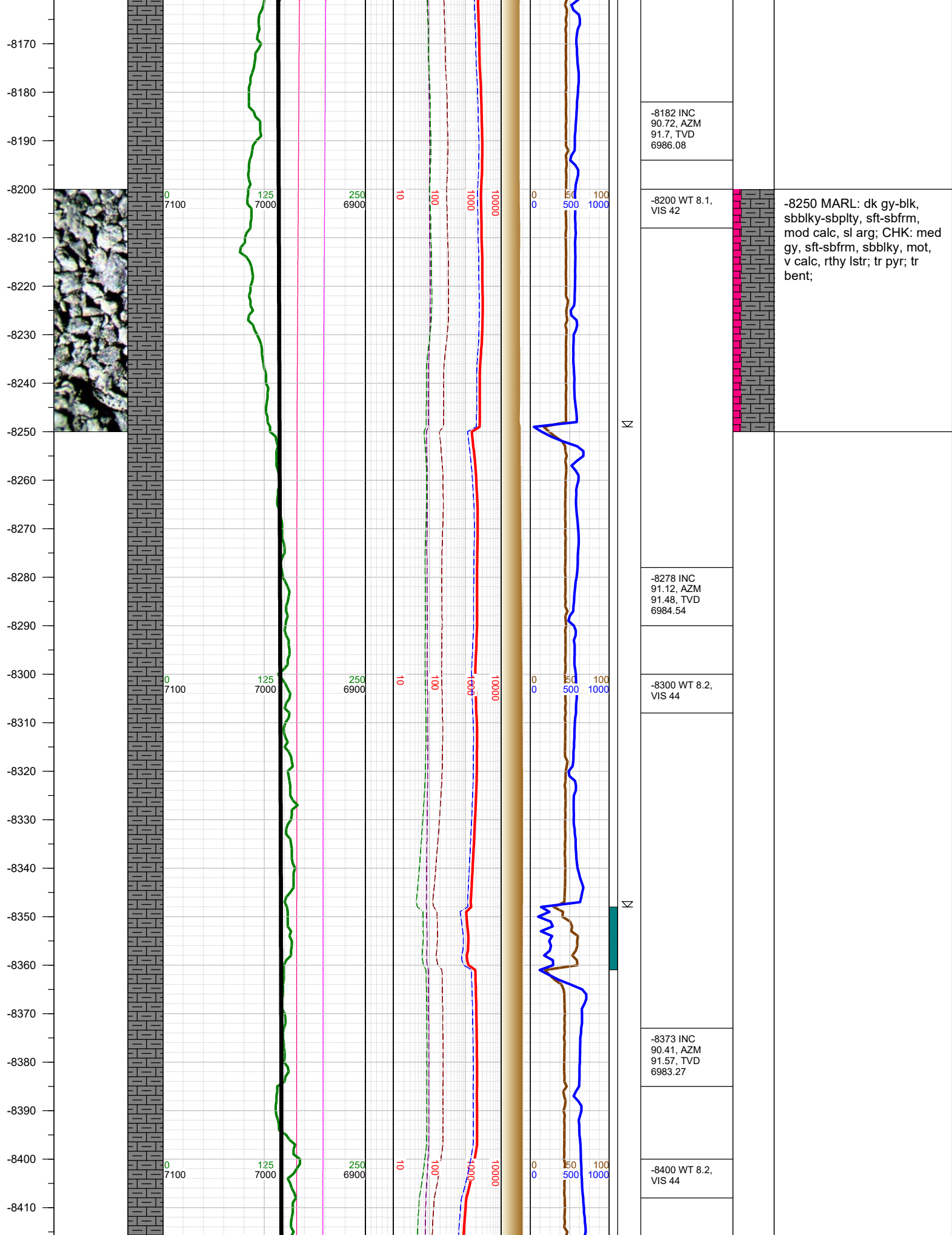












-8420
-8430
-8440
-8450
-8460
-8470
-8480
-8490
-8500
-8510
-8520
-8530
-8540
-8550
-8560
-8570
-8580
-8590
-8600
-8610
-8620
-8630
-8640
-8650
-8660
-8670



0
7100

125
7000

250
6900

10

100

1000

10000

0
0

50
500

100
1000

N

☀

N

N

-8468 INC
90.01, AZM
90.08, TVD
6982.92

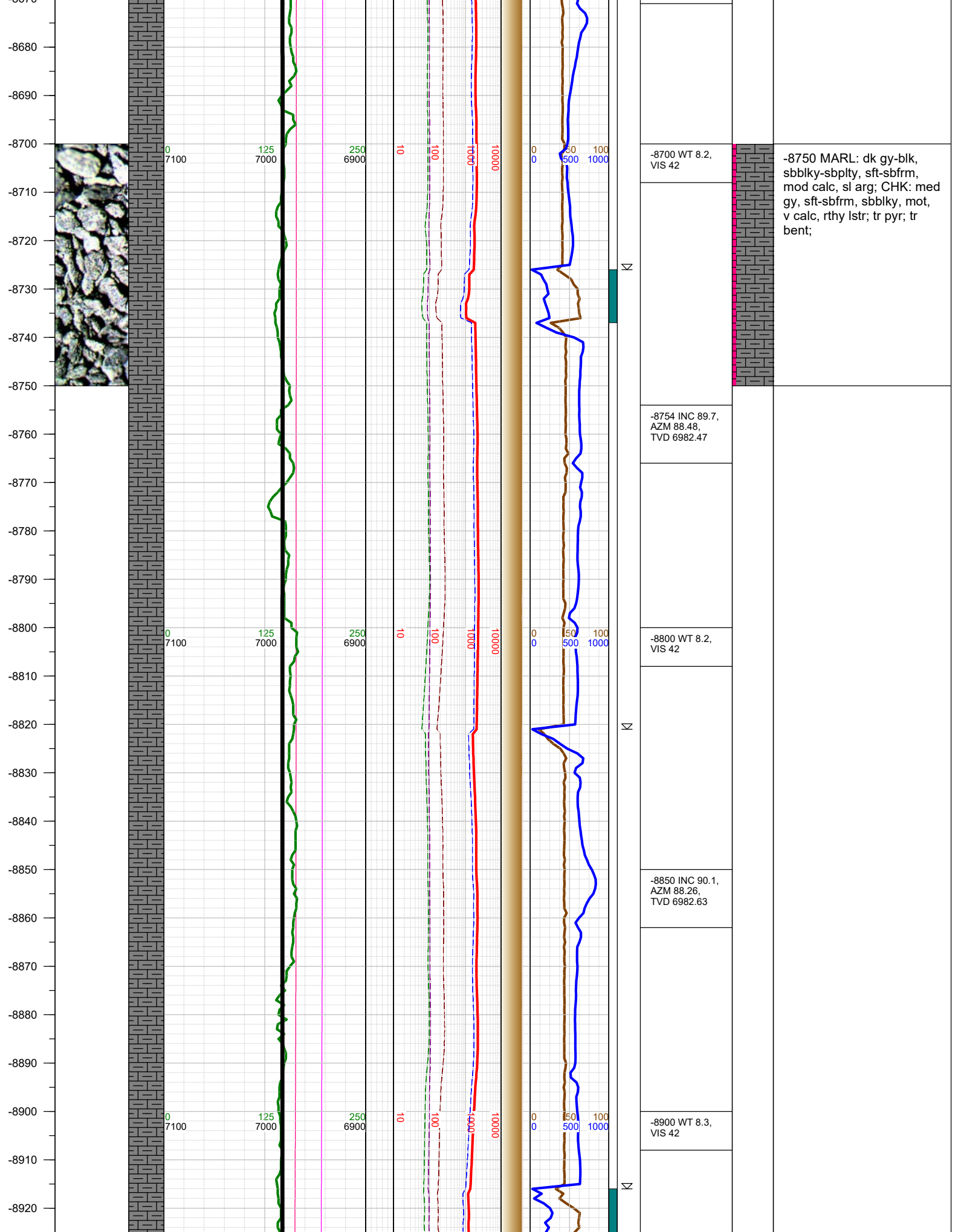
-8500 WT 8.2,
VIS 42

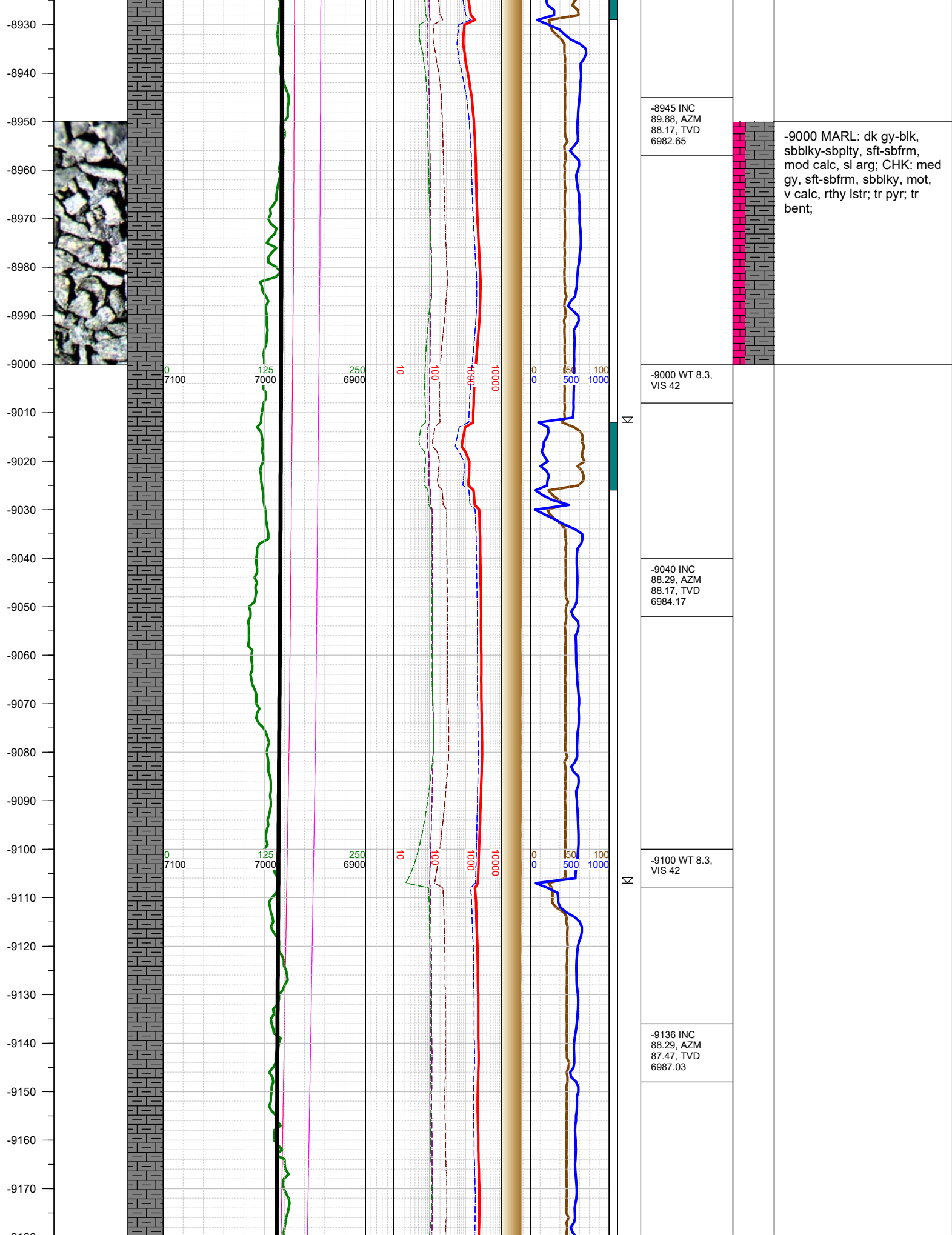
-8564 INC
90.01, AZM
89.76, TVD
6982.9

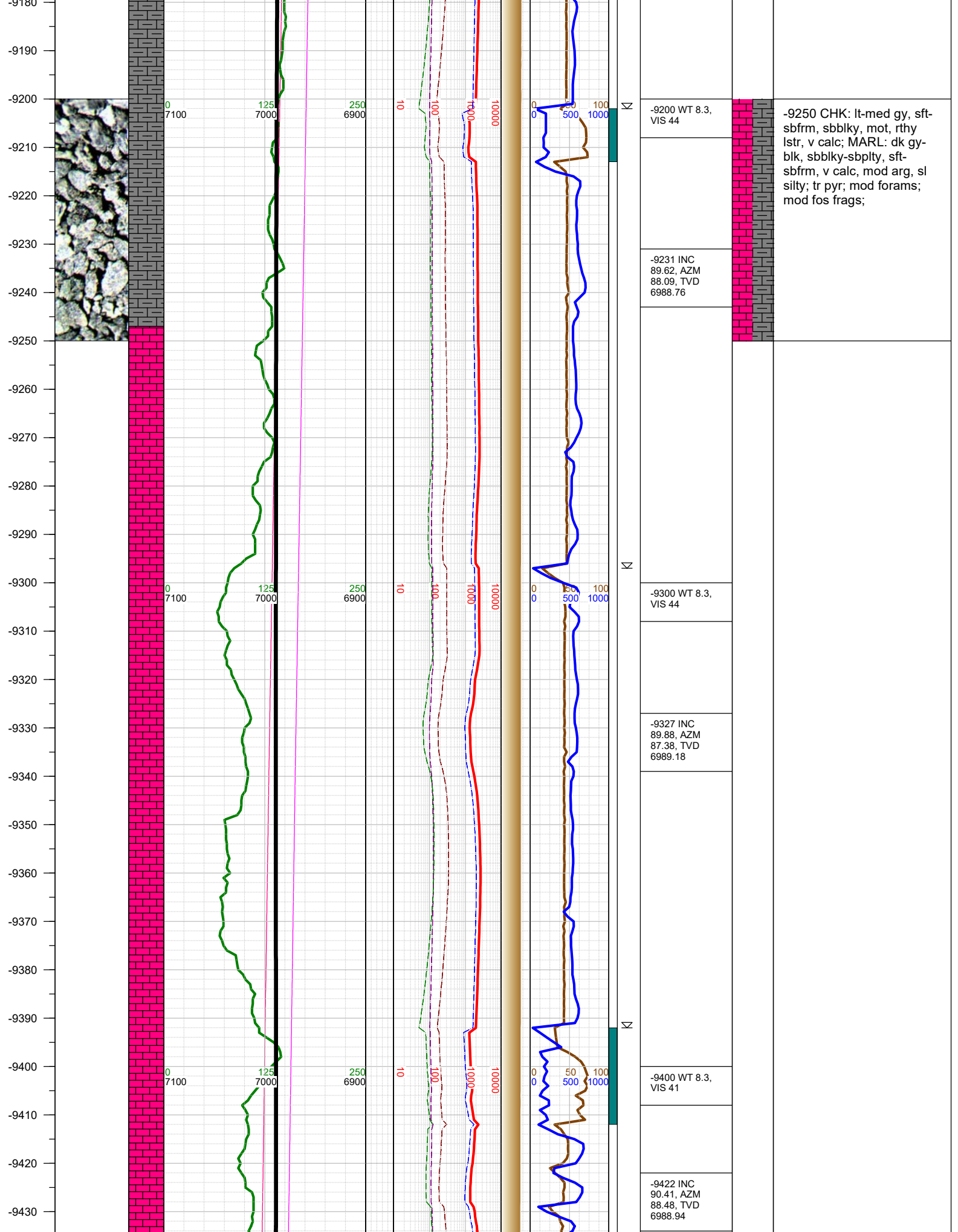
-8600 WT 8.2,
VIS 42

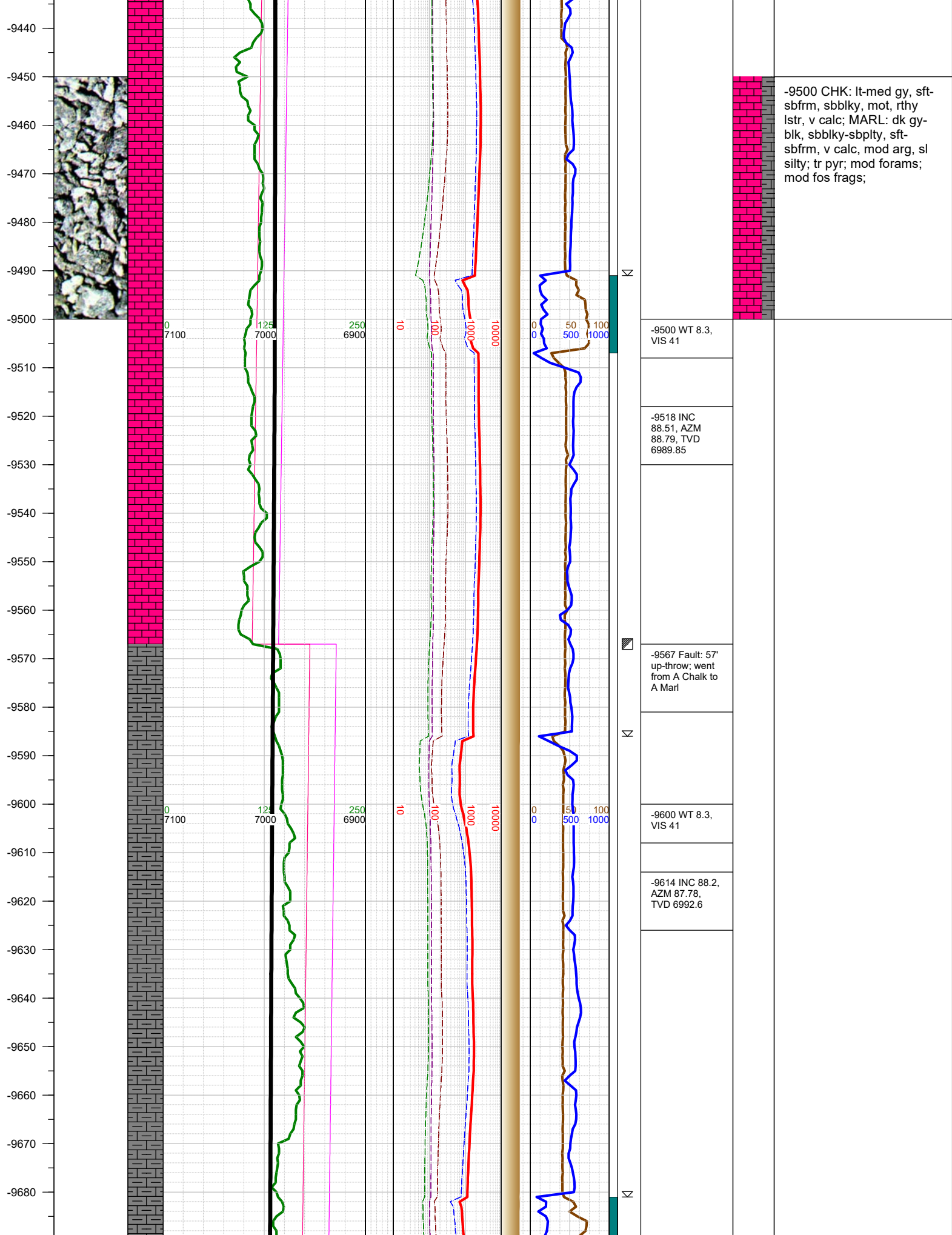
-8659 INC
90.41, AZM
90.07, TVD
6982.56

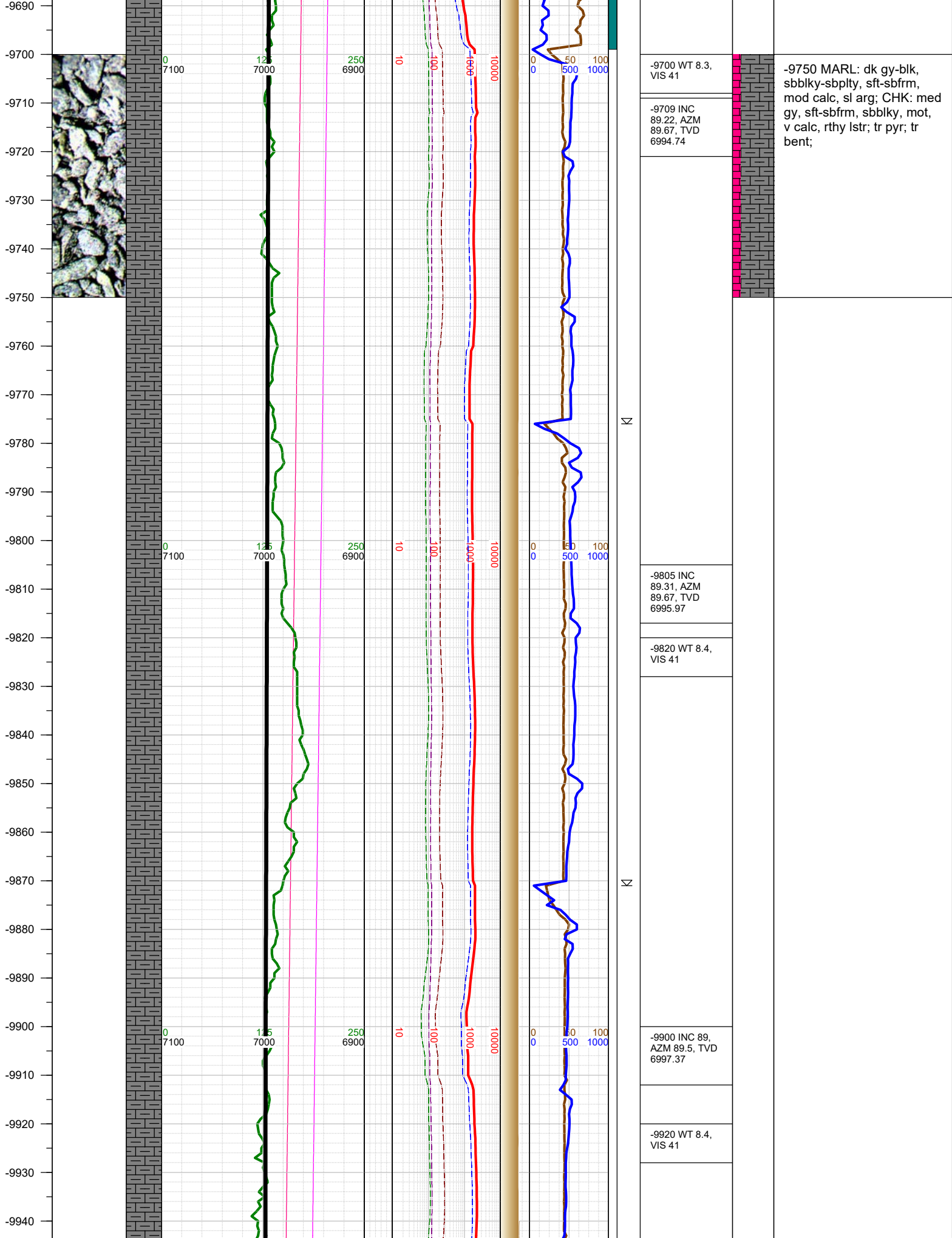
-8500 MARL: dk gy-blk,
sbbly-sbply, sft-sbfrm,
mod calc, sl arg; CHK: med
gy, sft-sbfrm, sbbly, mot,
v calc, rthy lstr; tr pyr; tr
bent;

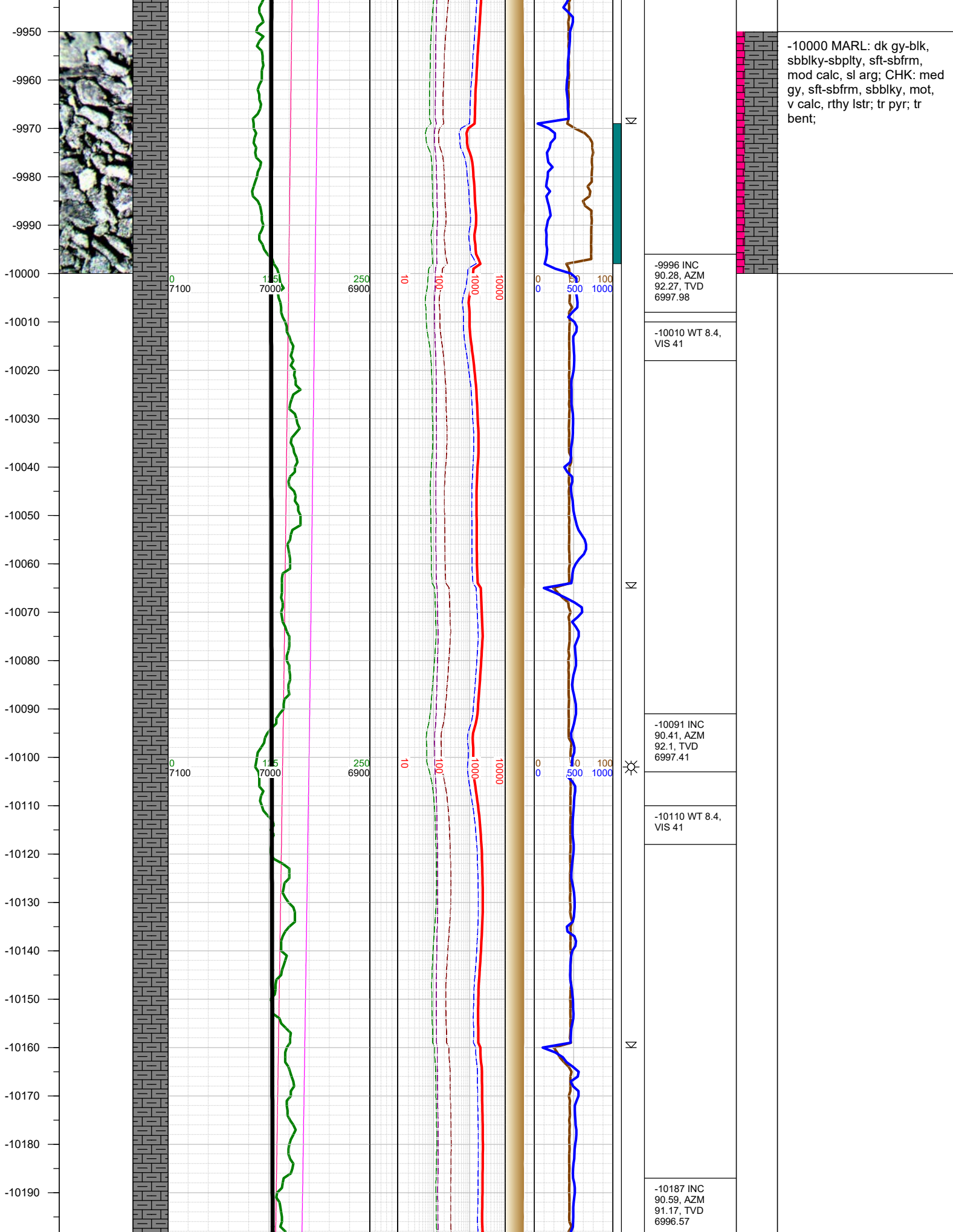


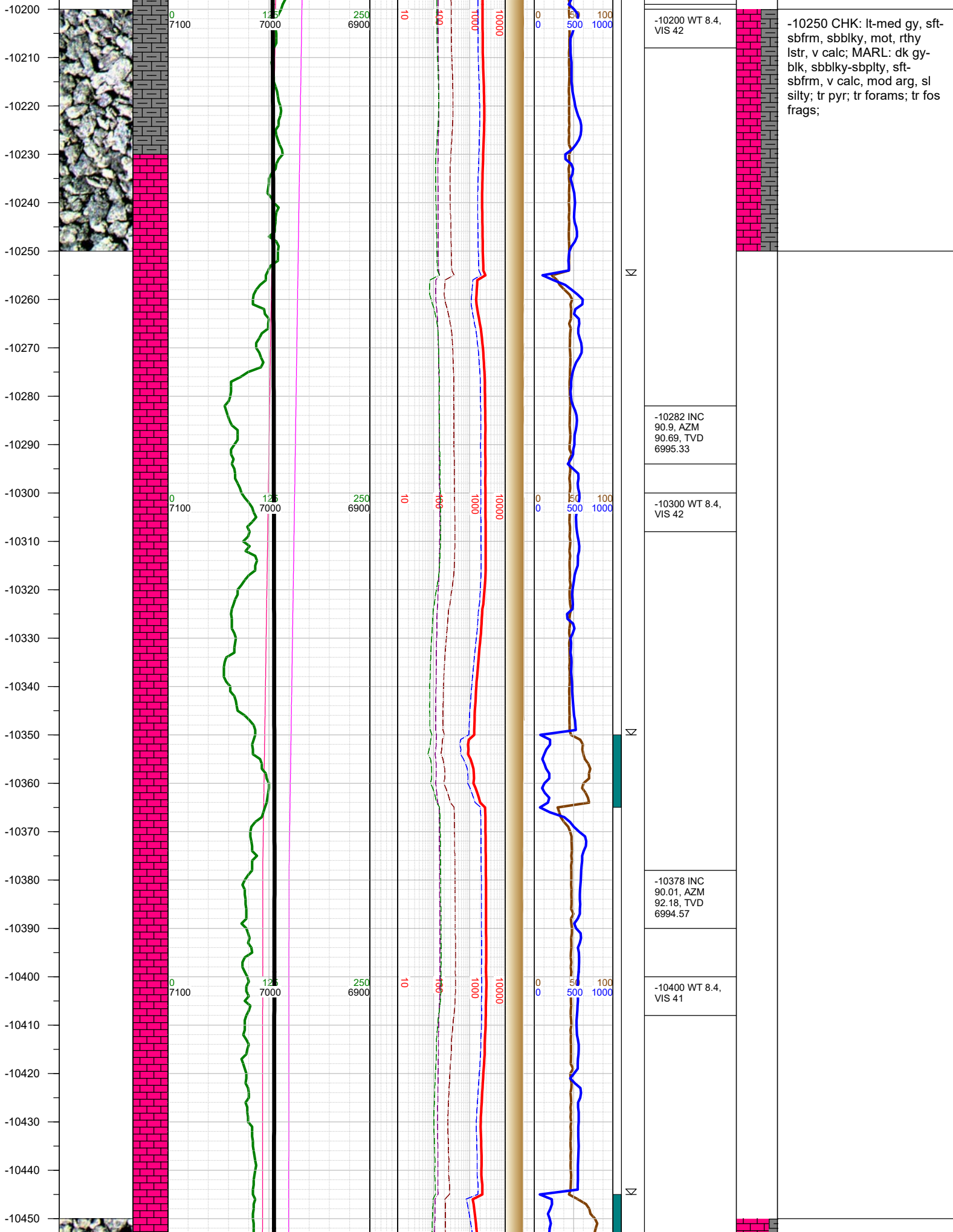


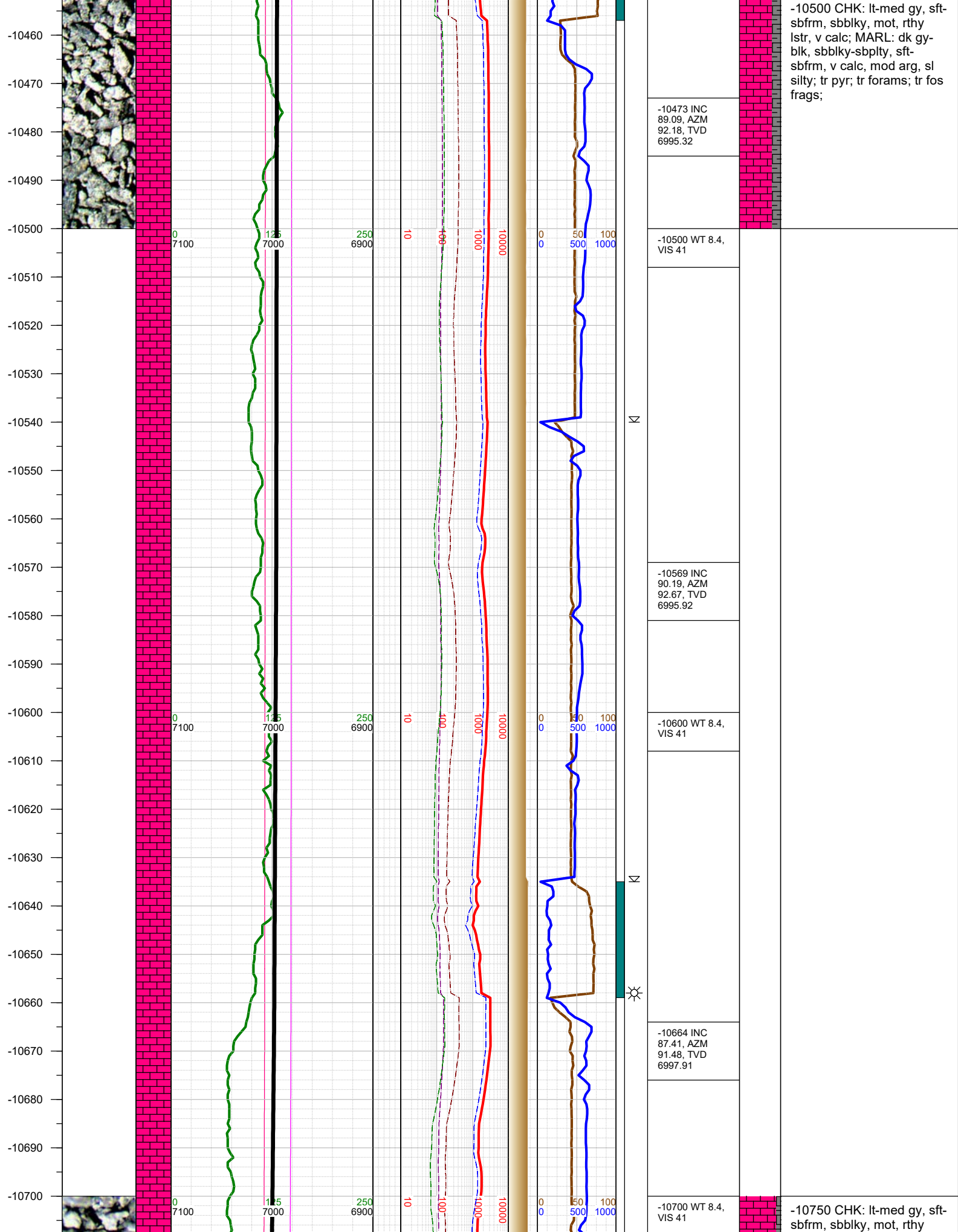


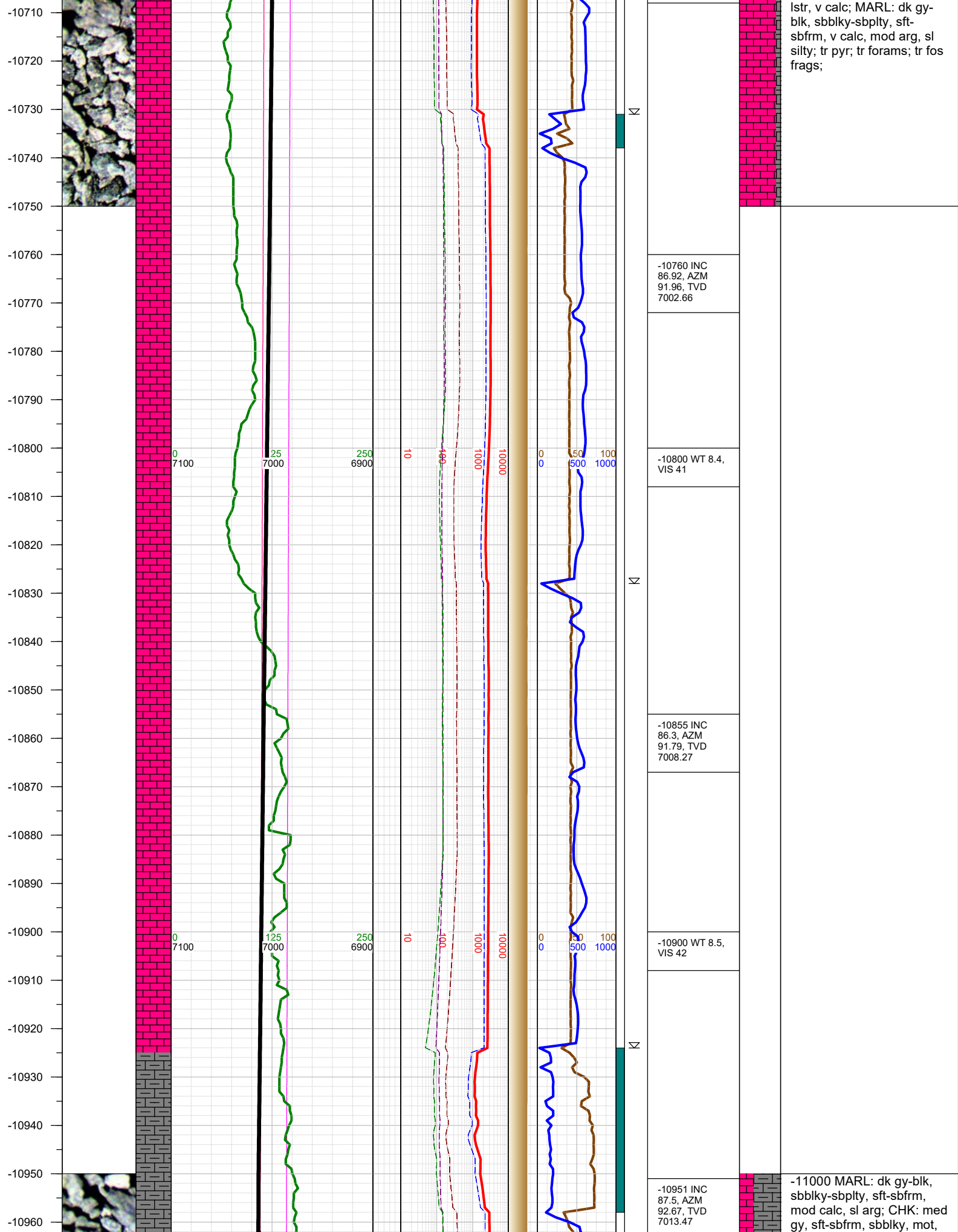




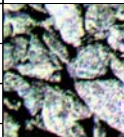
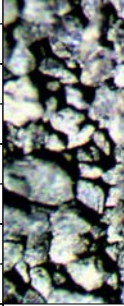








-10970
-10980
-10990
-11000
-11010
-11020
-11030
-11040
-11050
-11060
-11070
-11080
-11090
-11100
-11110
-11120
-11130
-11140
-11150
-11160
-11170
-11180
-11190
-11200
-11210



0
7100

125
7000

250
6900

10

100

1000

10000

0
0

50
500

100
1000

-11000 WT 8.5,
VIS 42

-11046 INC
90.9, AZM
91.39, TVD
7014.79

-11100 WT 8.5,
VIS 42

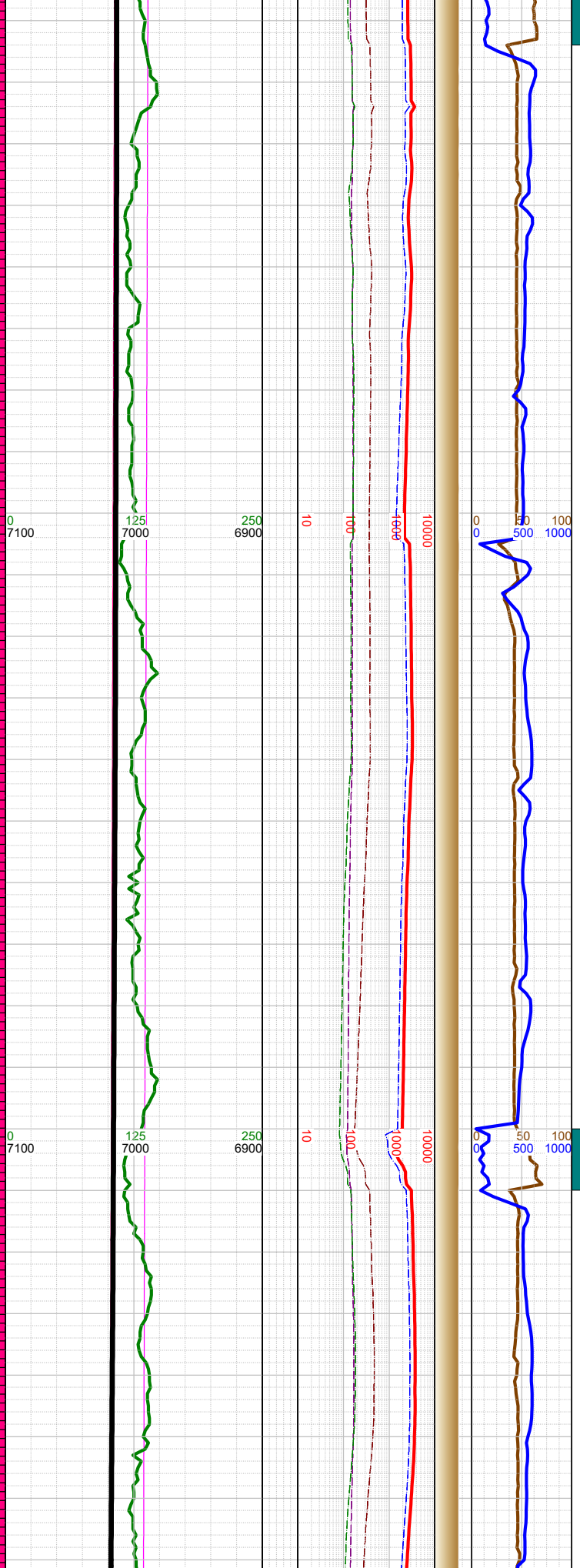
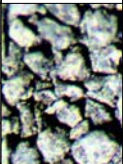
-11141 INC
90.9, AZM
89.28, TVD
7013.3

-11200 WT 8.5,
VIS 42

v calc, rthy lstr; tr pyr;

-11250 MARL: dk gy-blk,
sbbly-sbply, sft-sbfrm,
mod calc, sl arg; CHK: med
gy, sft-sbfrm, sbbly, mot,
v calc, rthy lstr; tr pyr;

-11220
-11230
-11240
-11250
-11260
-11270
-11280
-11290
-11300
-11310
-11320
-11330
-11340
-11350
-11360
-11370
-11380
-11390
-11400
-11410
-11420
-11430
-11440
-11450
-11460
-11470



-11237 INC
88.91, AZM
89.67, TVD
7013.46

-11300 WT 8.5,
VIS 42

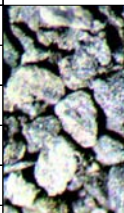
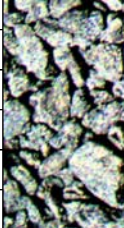
-11332 INC
89.79, AZM
89.67, TVD
7014.54

-11400 WT 8.3,
VIS 43

-11427 INC
87.89, AZM
89.19, TVD
7016.46

-11500 MARL: dk gy-blk,
sbbkly-sbplty, sft-sbfrm,
mod calc, sl arg; CHK: med
gy, sft-sbfrm, sbbkly, mot,
v calc, rthy lstr; tr pyr;

-11480
-11490
-11500
-11510
-11520
-11530
-11540
-11550
-11560
-11570
-11580
-11590
-11600
-11610
-11620
-11630
-11640
-11650
-11660
-11670
-11680
-11690
-11700
-11710
-11720



0
7100

125
7000

250
6900

10

100

1000

10000

0
0

50
500

100
1000

Σ

Σ

Σ

Σ

-11500 WT 8.3,
VIS 43

-11523 INC
88.2, AZM
90.69, TVD
7019.74

-11600 WT 8.2,
VIS 42

-11619 INC
91.78, AZM
89.36, TVD
7019.75

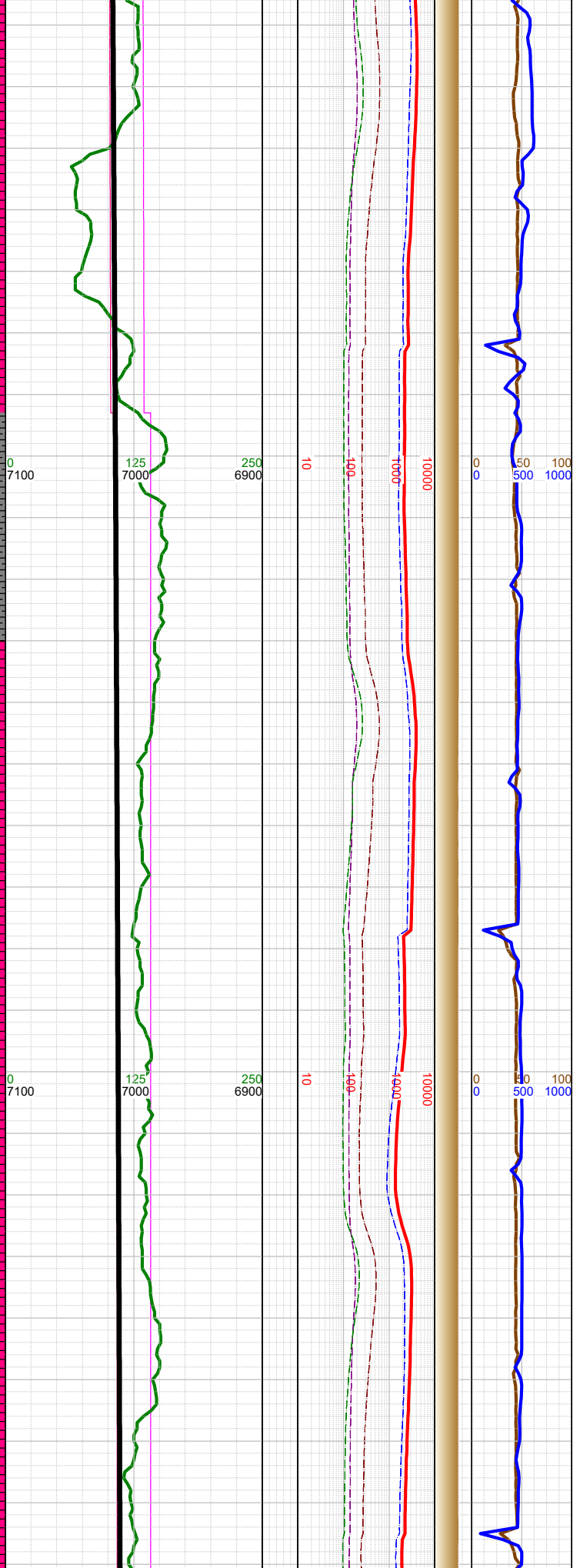
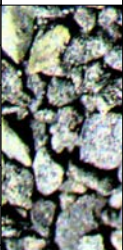
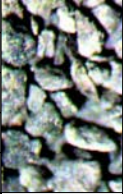
-11688 Fault: 2'
up-throw; stayed
in A Chalk

-11700 WT 8.2,
VIS 42

-11714 INC
91.78, AZM
88.66, TVD
7016.8

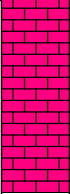
-11750 CHK: lt-med gy, sft-
sbfm, sbbkly, mot, rthy
lstr, v calc; tr foram; tr fos
frags;

-11730
-11740
-11750
-11760
-11770
-11780
-11790
-11800
-11810
-11820
-11830
-11840
-11850
-11860
-11870
-11880
-11890
-11900
-11910
-11920
-11930
-11940
-11950
-11960
-11970
-11980

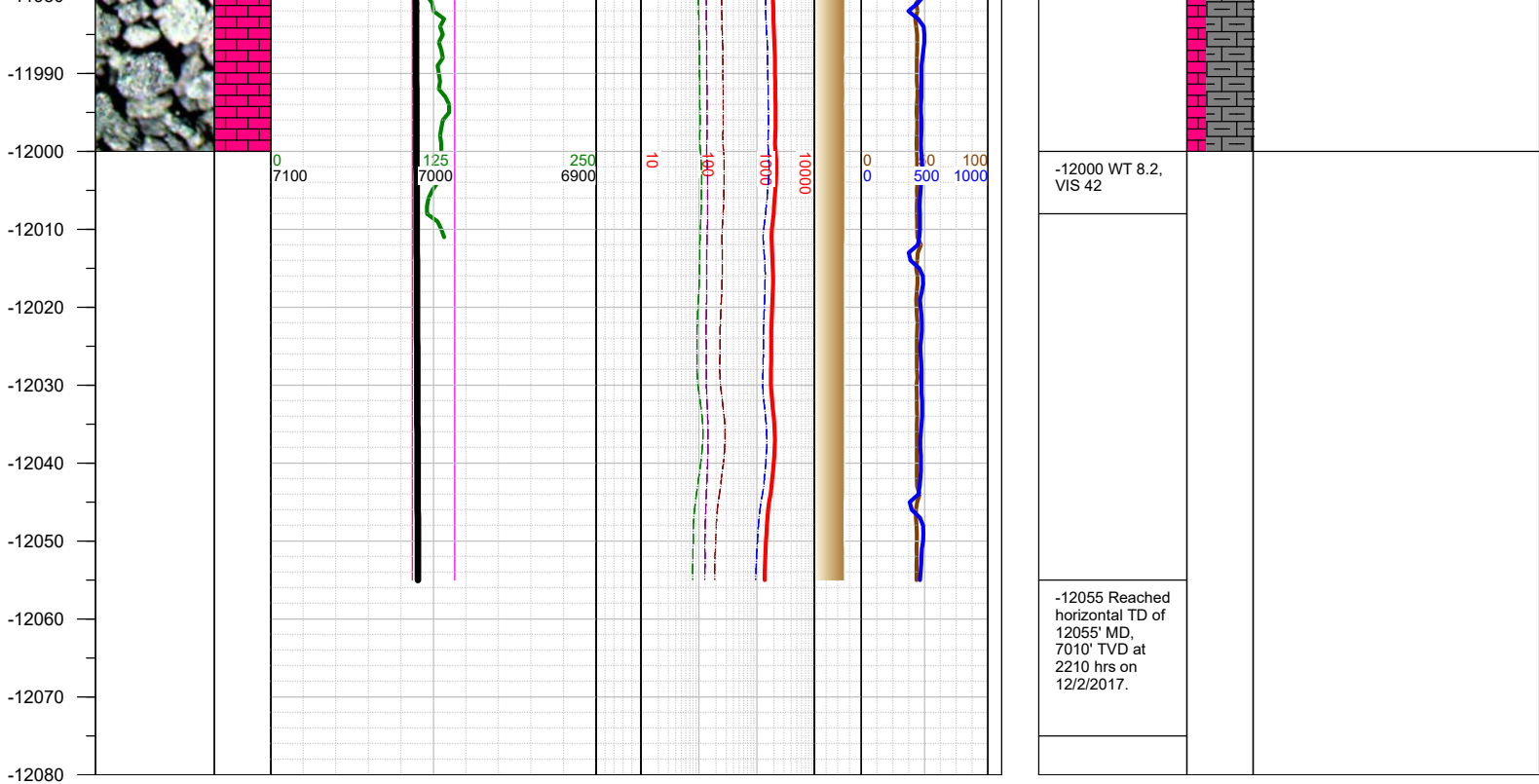


✕
N
☒
N
☒
N

	-11793 Fault: 5' up-throw; went from A Chalk to A Marl
	-11809 INC 91.38, AZM 88.88, TVD 7014.18
	-11830 WT 8.2, VIS 42
	-11905 INC 90.99, AZM 88.48, TVD 7012.2
	-11920 WT 8.2, VIS 42



-12000 MARL: dk gy-blk, sbblky-sbplty, sft-sbfrm, mod calc, sl arg; CHK: med gy, sft-sbfrm, sbblky, mot, v calc, rthy lstr; tr pyr; mod bent;



TOTAL DEPTH = 12055'

Thank you for using Earth Science Agency