



EXTRACTION OIL & GAS
Project: WELD COUNTY, COLORADO (NAD 83)
Site: Sec 3, T4N-R68W 6th PM (KB 29' CORRECT 111917)
Well: Jesser 3E 10-2C
Wellbore: Wellbore #1
Plan: Plan #2 CORRECT KB 29' (Jesser 3E 10-2C/Wellbore #1)

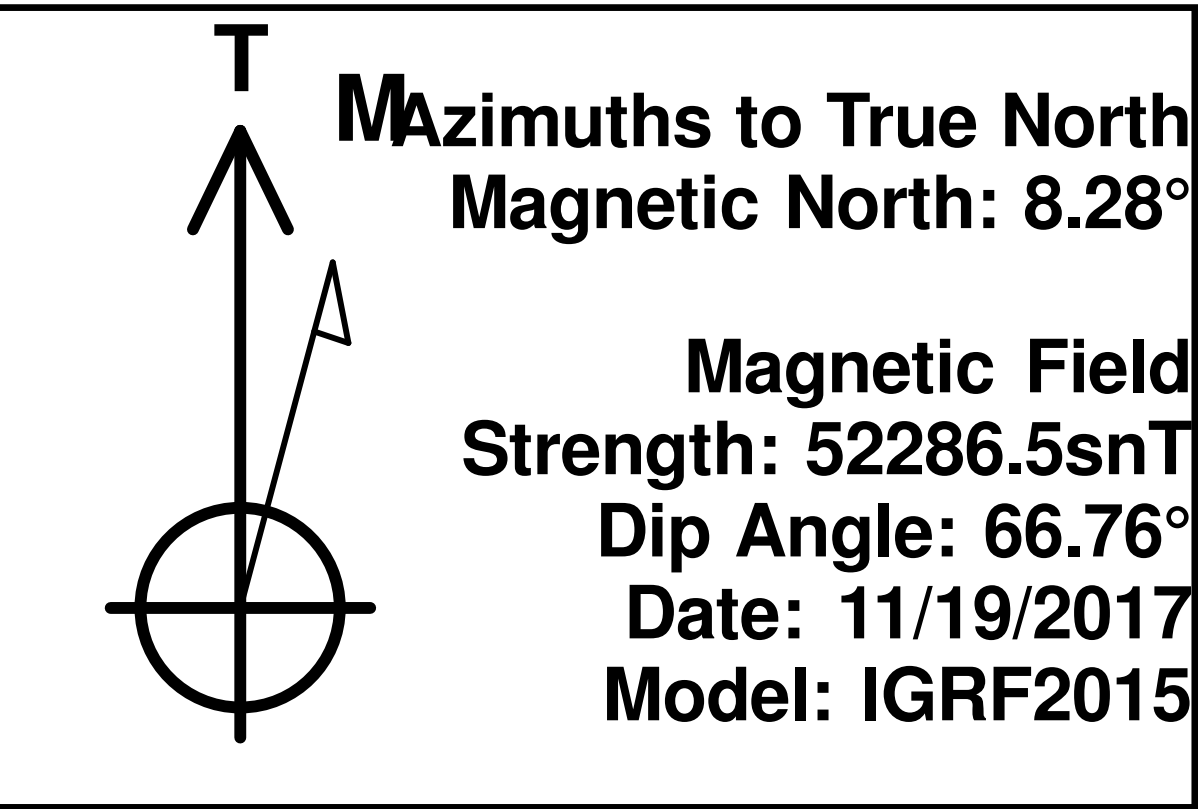
WELL DETAILS: Jesser 3E 10-2C

Ground Elevation:: 5114.0
RKB Elevation: KB=29 @ 5143.0usft
Rig Name:

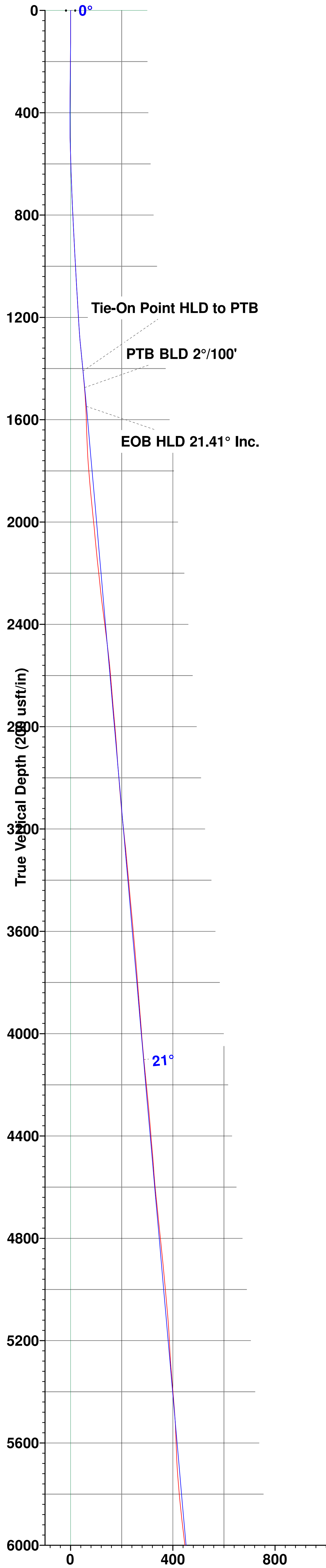


	Northing	Easting	Latitude	Longitude
0.0	0.0	1367717.59	3139971.83	40° 20' 30.113 N 104° 59' 52.282 W

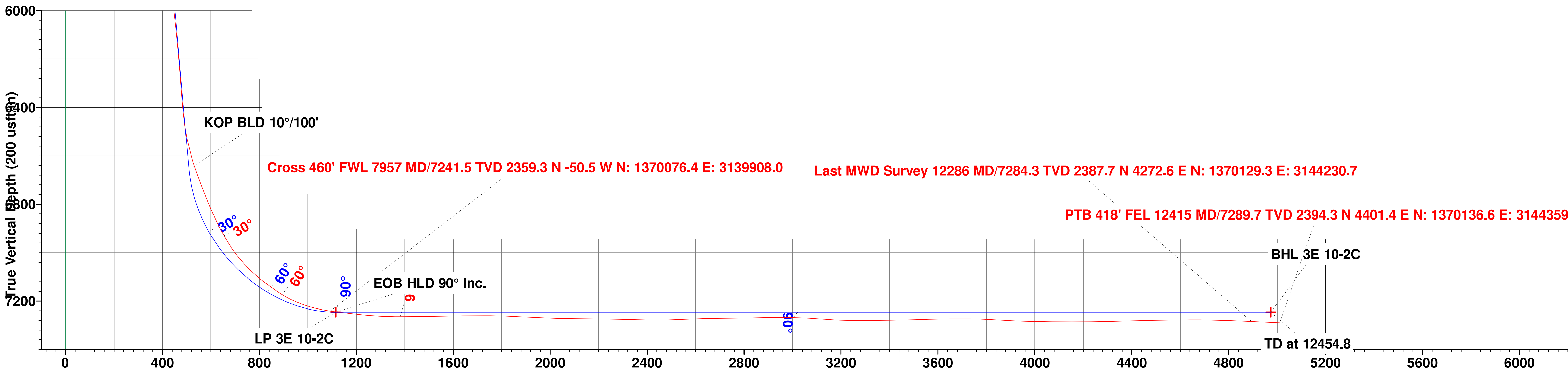
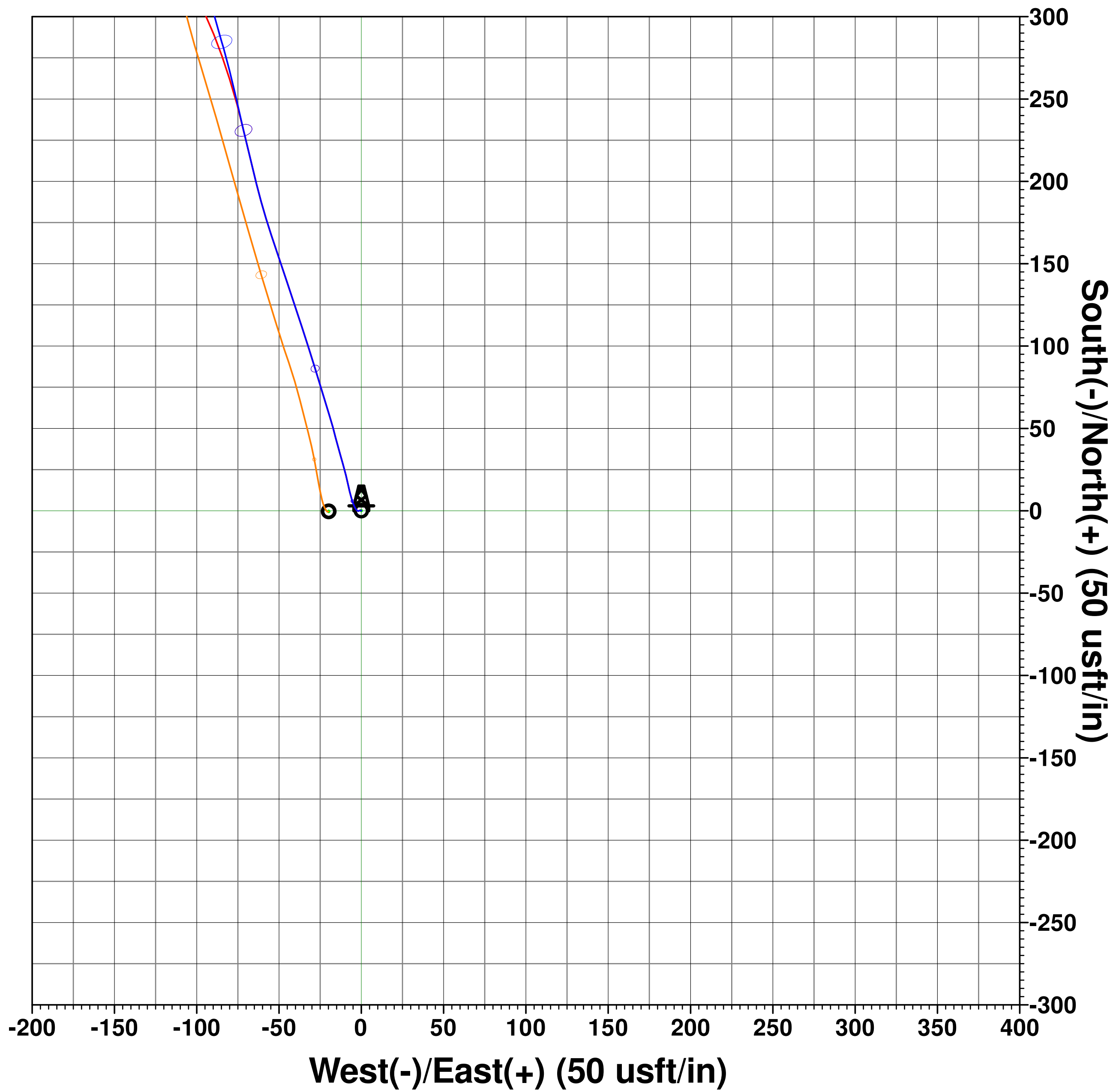
Planned Section Details									
Sec	MD	Inc	Azi	TVD	+N/-S	+E/-W	Dleg	TFace	VSect
1	1443.0	20.28	347.17	1409.7	231.0	-71.6	0.00	0.00	48.6
2	1512.0	20.28	347.17	1474.5	254.3	-76.9	0.00	0.00	55.1
3	1590.6	21.41	344.10	1547.9	281.4	-83.8	2.00	-45.47	62.1
4	7076.1	21.41	344.10	6654.9	2207.2	-632.4	0.00	0.00	509.1
5	8034.8	90.00	90.38	7246.0	2425.8	-61.0	10.00	105.21	1115.2
6	12454.8	90.00	90.38	7246.0	2396.3	4358.9	0.00	0.00	4974.1



PROJECT DETAILS: WELD COUNTY, COLORADO (NAD 83)
Geodetic System: US State Plane 1983
Datum: North American Datum 1983
Ellipsoid: GRS 1980
Zone: Colorado Northern Zone
System Datum: Mean Sea Level
Local North: True



Vertical Section at 61.20° (200 usft/in)



Vertical Section at 61.20° (200 usft/in)

