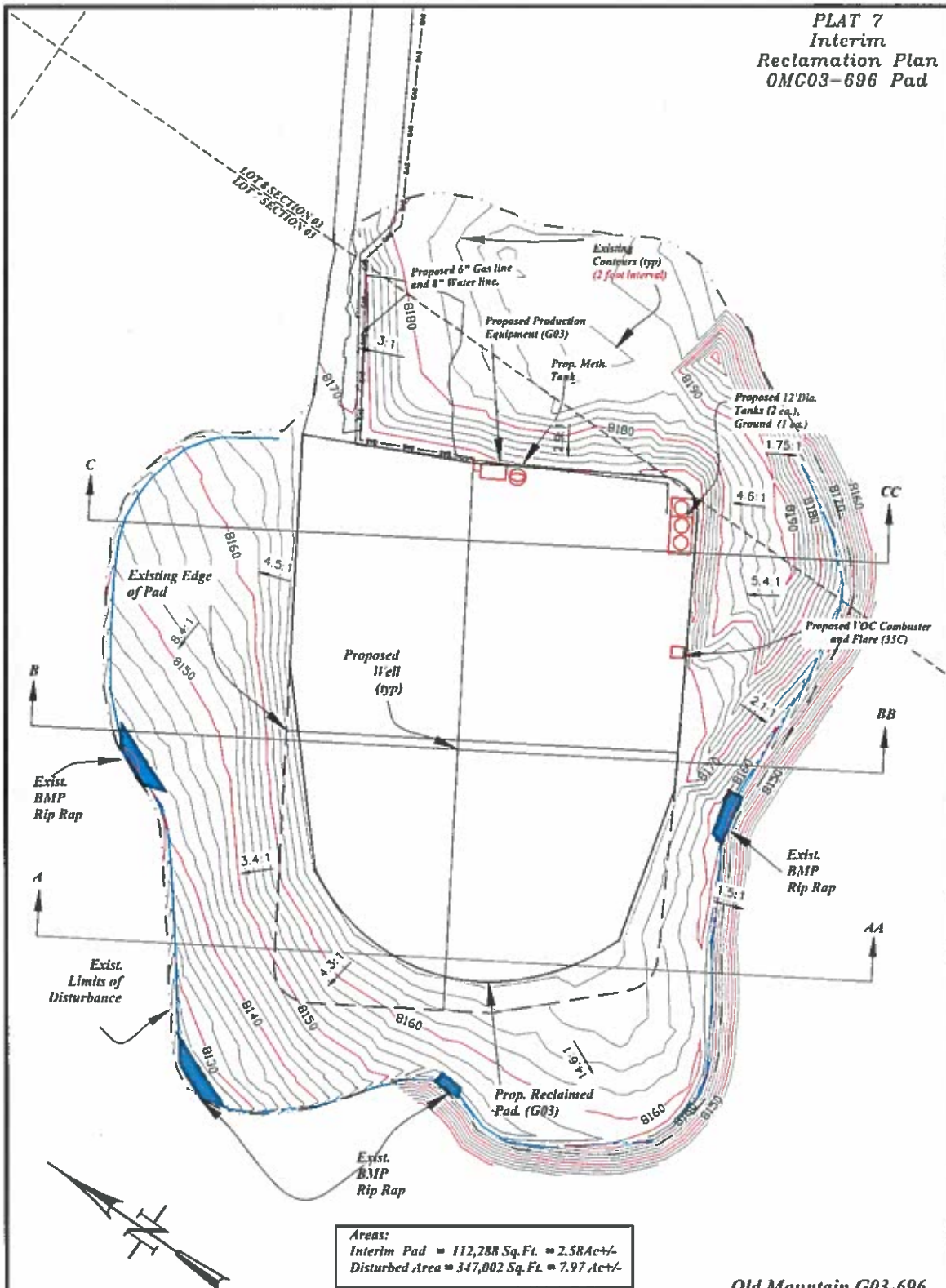
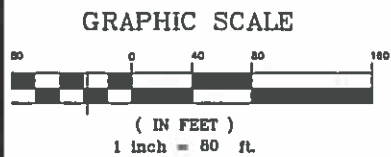


PLAT 7
Interim
Reclamation Plan
OMG03-696 Pad



Areas:
Interim Pad = 112,288 Sq. Ft. = 2.58 Ac +/-
Disturbed Area = 347,002 Sq. Ft. = 7.97 Ac +/-



Pad Elevation = 8168.5



**Berry
Petroleum
Company, LLC**

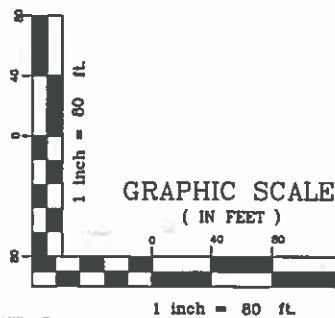
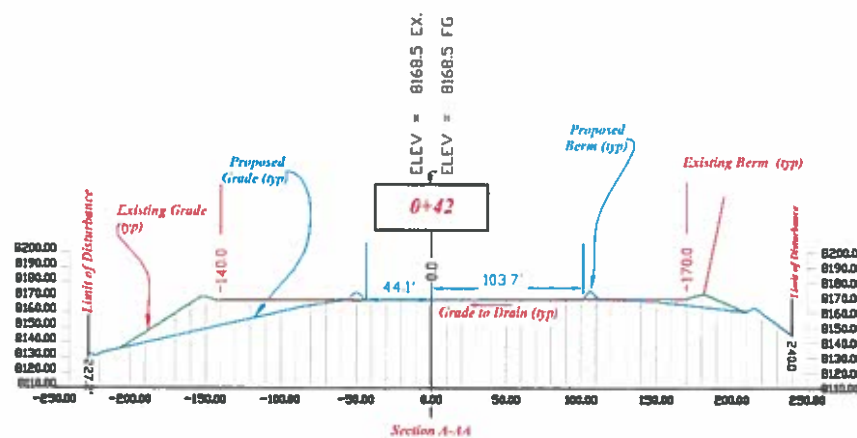
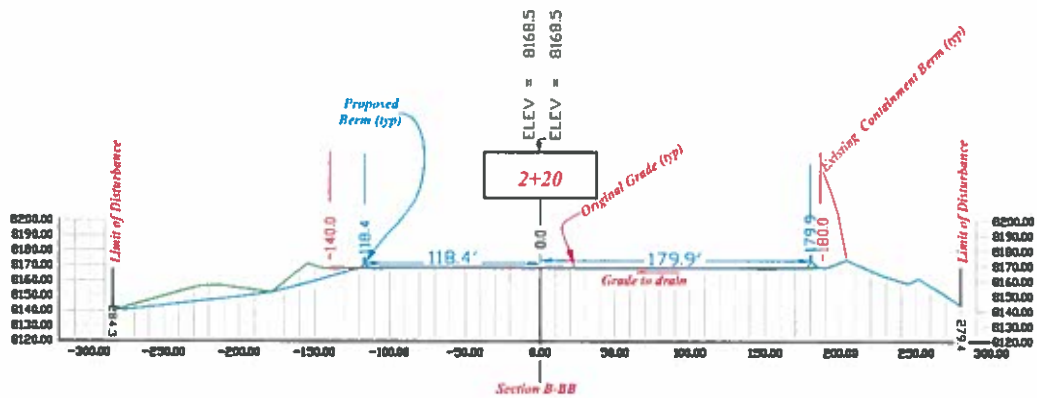
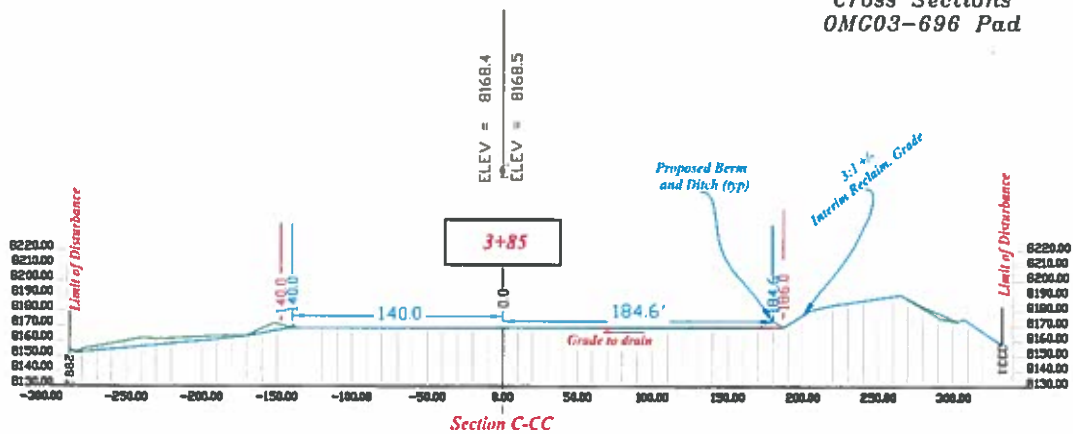
Old Mountain G03-696
Lot 7 Section 03
T. 6 S., R. 96 W., 6TH PM
Garfield County, CO

**Interim
Reclamation Plan**

State to Stoner Surveying LLC
888 Pine Meadow Dr.
Grand Junction, CO
81504 (970) 248-2100

SURVEY BY: IM 12/21/17	PDOP: 2.0
DRAWN BY: IM 02/23/18	DWG: OMG03-696
REVISION:	

PLAT 7A
Interim Reclamation
Cross Sections
OMC03-696 Pad



Berry
Petroleum
Company, LLC

Old Mountain G03-696
Lot 7 Section 03
T. 6 S., R. 96 W., 6TH PM
Garfield County, CO

Interim Reclamation
Cross Sections

Burns to Stones Surveying LLC
555 Pine Meadow Dr.
Grand Junction, CO
81504 (970) 249-2110

SURVEY BY: IM 12/21/17

PDOP: 2.9

DRAWN BY: IM 02/23/18

DWG: OMC03-696

REVISED: