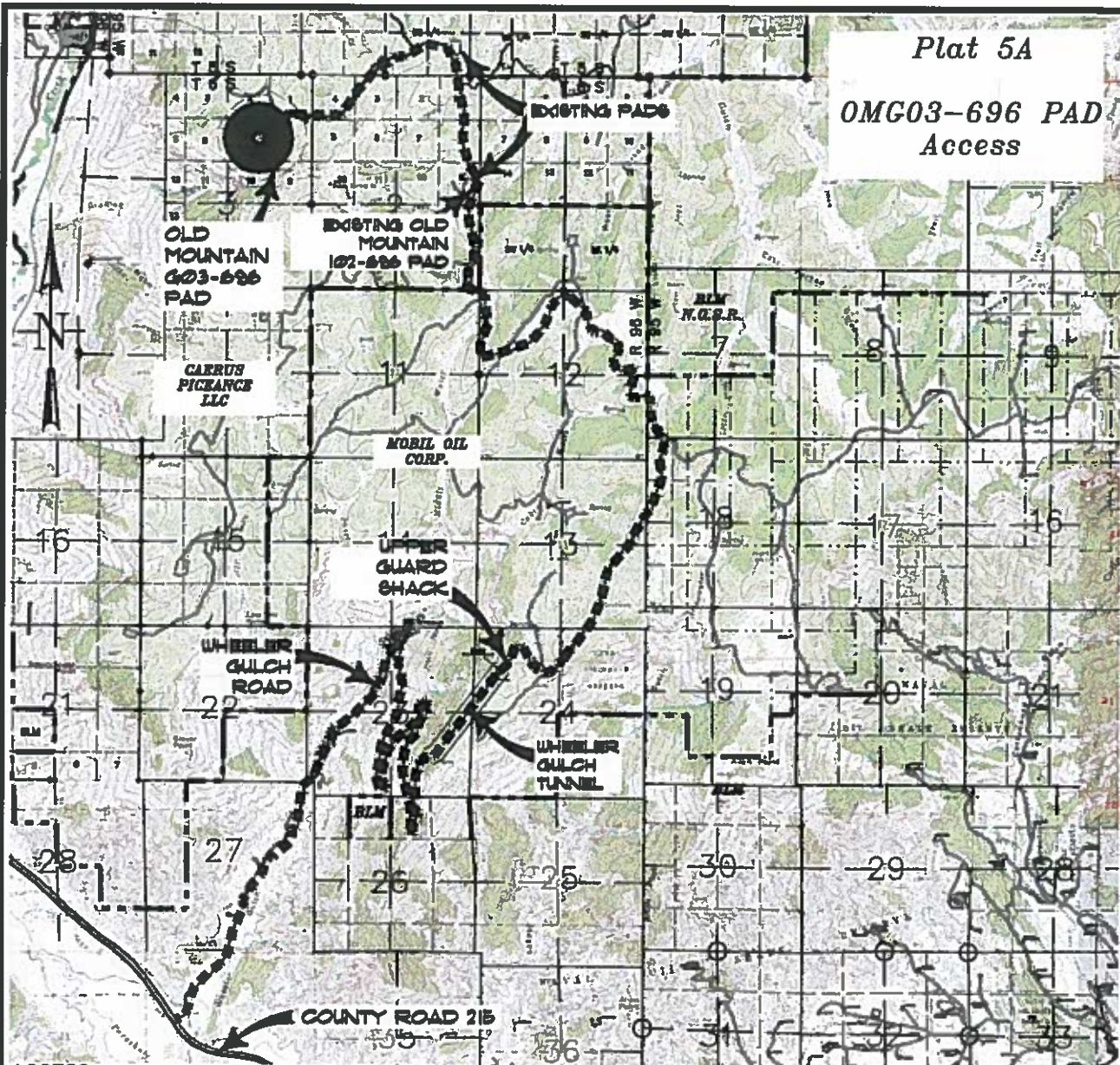


Plat 5A

OMG03-696 PAD
Access



ACCESS:

From the County Road 215, Proceed in a general Northeast direction up Wheeler Gulch road ± 5.9 miles to the Wheeler Gulch tunnel, Proceed in a general Northeasterly direction through the tunnel to the top of Old Mountain, Proceed in a general Northerly direction on said road another ± 2.7 miles to a Y in the road, bear left, proceed on said road ± 2.4 miles to a Y in the road, bear right, Proceed ± 0.2 miles to the boundary of Mobile Oil and Caerus Piceance LLC, Continue on the dirt/gravel road thru Caerus Piceance LLC in a general Northerly direction ± 1.6 miles to the existing pad OMP32-595 Water Impoundment Facility, Proceed past location ± 1.4 miles Westerly to the Existing access of said location being the point of destination.



GRAPHIC SCALE
1:5,000



**Berry
Petroleum
Company, LLC**



ACCESS

Stars to Stones Surveying LLC
558 Pine Meadow Dr.
Grand Junction, CO 81504
(970) 618-2118

SURVEY BY: IM 12/21/17

PDOP: 2.0

DRAWN BY: IM 02/23/18

DWG: OMG03-696

REVISED: