

# **EXTRACTION OIL & GAS**

**Weld County**

**Sec 7-T4N-R68W**

**TROTT 7W-20-6N**

**ORIGINAL WELLBORE**

**Plan: PROPOSAL 1**

## **Standard Planning Report**

**26 February, 2018**



Project: Weld County  
Site: Sec 7-T4N-R68W  
Well: TROTT 7W-20-6N  
Wellbore: ORIGINAL WELLBORE  
Design: PROPOSAL 1



Azimuths to True North  
Magnetic North: 8.37°

Magnetic Field  
Strength: 52345.2nT  
Dip Angle: 66.76°  
Date: 4/4/2017  
Model: IGRF2015

#### WELL DETAILS: TROTT 7W-20-6N

5032.00							
+N/-S	+E/-W	Northing	Easting	Latitude	Longitude	Slot	
0.00	0.00	1361363.30	3128318.06	40° 19' 27.944 N	105° 2' 23.212 W		

#### SECTION DETAILS

Sec	MD	Inc	Azi	TVD	+N/-S	+E/-W	Dleg	TFace	Vsect	Target
1	0.00	0.00	0.00	0.00	0.00	0.00	0.00	0.00	0.00	
2	300.00	0.00	0.00	300.00	0.00	0.00	0.00	0.00	0.00	
3	1231.03	18.62	70.66	1214.73	49.66	141.50	2.00	70.66	-139.50	
4	4605.20	18.62	70.66	4412.27	406.44	1158.09	0.00	0.00	-1141.74	
5	5536.23	0.00	0.00	5327.00	456.10	1299.59	2.00	180.00	-1281.24	
6	5566.23	0.00	0.00	5357.00	456.10	1299.59	0.00	0.00	-1281.24	
7	6466.33	90.00	269.42	5930.00	450.29	726.59	10.00	269.42	-708.88	TROTT 6 - LP REV 2
8	16367.89	90.00	269.42	5930.00	350.35	-9174.47	0.00	135.88	9181.16	TROTT 6 - PBHL REV 2

#### ANNOTATIONS

MD	Inc	Azi	TVD	+N/-S	+E/-W	Vsect	Departure	Annotation
300.00	0.00	0.00	300.00	0.00	0.00	0.00	0.00	Start Build 2.00
1231.03	18.62	70.66	1214.73	49.66	141.50	-139.50	149.96	Start 3374.17 hold at 1231.03 MD
4605.20	18.62	70.66	4412.27	406.44	1158.09	-1141.74	1227.34	Start Drop -2.00
5536.23	0.00	0.00	5327.00	456.10	1299.59	-1281.24	1377.30	Start 30.00 hold at 5536.23 MD
5566.23	0.00	0.00	5357.00	456.10	1299.59	-1281.24	1377.30	Start DLS 10.00 TFO 269.42
6466.33	90.00	269.42	5930.00	450.29	726.59	-708.88	1950.33	Start DLS 0.00 TFO 135.88
16367.89	90.00	269.42	5930.00	350.35	-9174.47	9181.16	11851.90	TD at 16367.89

#### DESIGN TARGET DETAILS

Name	TVD	+N/-S	+E/-W	Northing	Easting	40° 19' 32.394 N	105° 2' 13.830 W	Shape
TROTT 6 - LP REV 2	5930.00	450.29	726.59	1361817.35	3129042.31			Point
- plan hits target center								
TROTT 6 - PBHL REV 2	5930.00	350.35	-9174.47	1361666.02	3119141.90	40° 19' 31.390 N	105° 4' 21.670 W	Point
- plan hits target center								

#### FORMATION TOP DETAILS

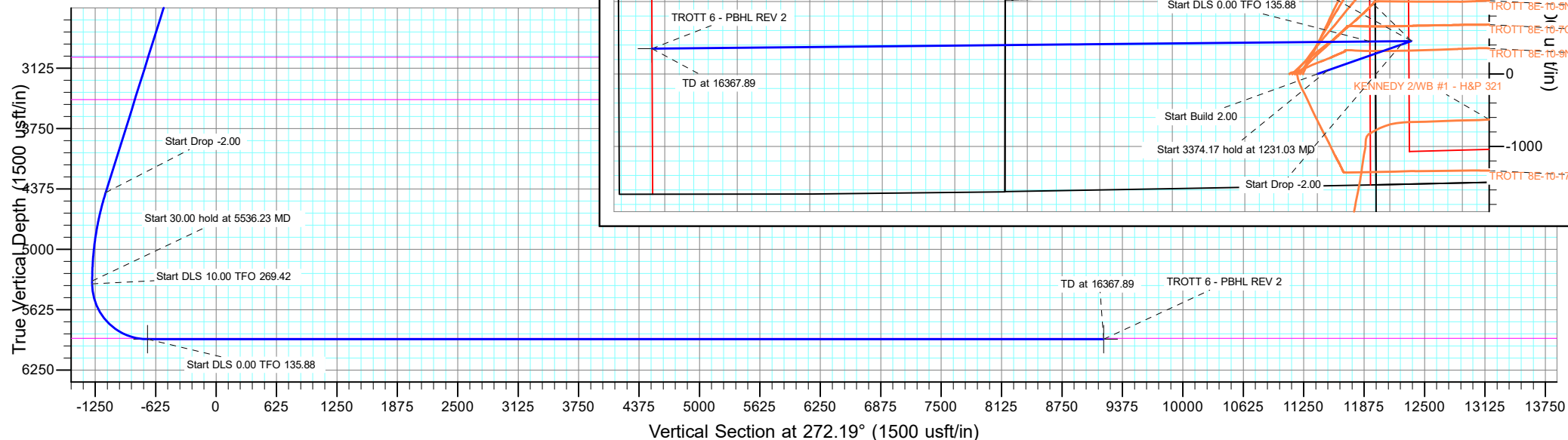
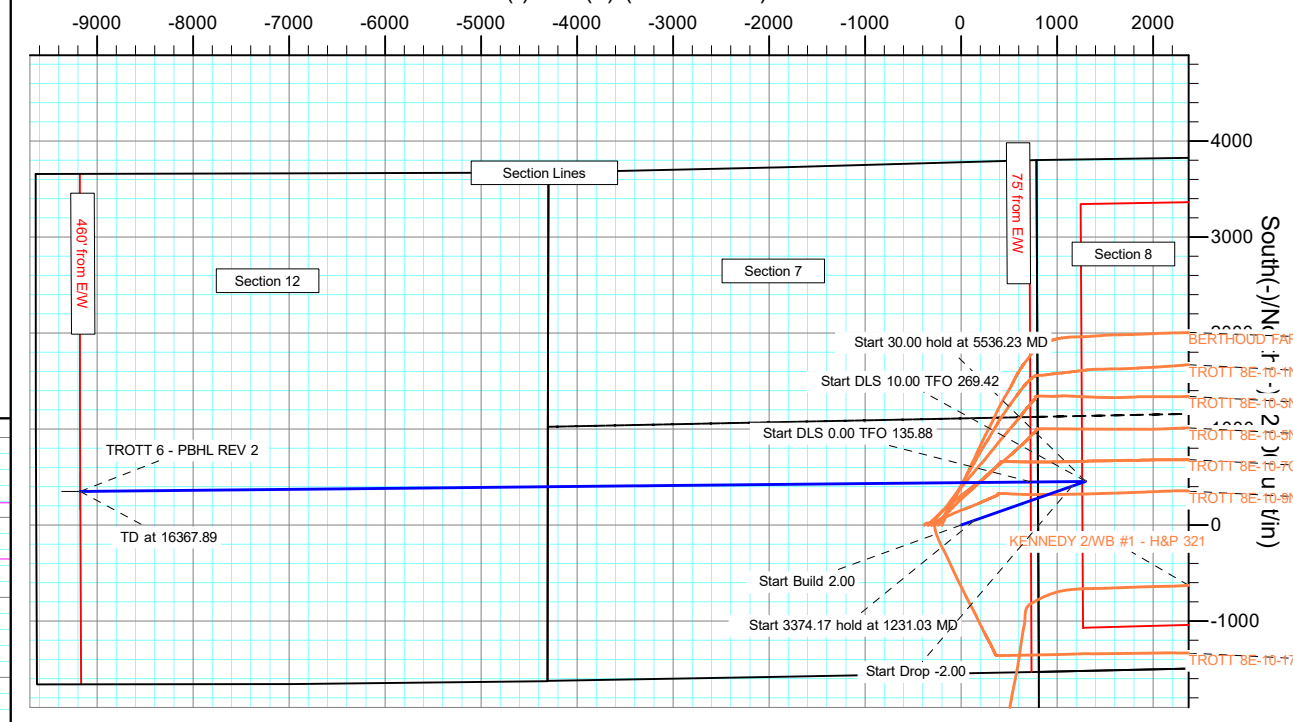
TVDPath	MDPath	Formation
2410.00	2492.33	PARKMAN
3010.00	3125.47	SUSSEX
3450.00	3589.78	SHANNON
5920.00	6359.09	NIOBARA

#### PROJECT DETAILS: Weld County

Geodetic System: US State Plane 1983  
Datum: North American Datum 1983  
Ellipsoid: GRS 1980  
Zone: Colorado Northern Zone  
System Datum: Mean Sea Level

SHL:  
1544' FSL, 804' FEL  
Sec 7-T4N-R68W  
LP\*  
1980' FSL, 75' FEL  
Sec 7-T4N-R68W  
BHL:  
2010' FSL, 460' FWL  
Sec 12-T4N-R69W

#### West(-)/East(+) (2000 usft/in)



## Planning Report

<b>Database:</b>	EDT_32Bit_ODBC	<b>Local Co-ordinate Reference:</b>	Well TROTT 7W-20-6N
<b>Company:</b>	EXTRACTION OIL & GAS	<b>TVD Reference:</b>	KB 25' @ 5057.00usft
<b>Project:</b>	Weld County	<b>MD Reference:</b>	KB 25' @ 5057.00usft
<b>Site:</b>	Sec 7-T4N-R68W	<b>North Reference:</b>	True
<b>Well:</b>	TROTT 7W-20-6N	<b>Survey Calculation Method:</b>	Minimum Curvature
<b>Wellbore:</b>	ORIGINAL WELLBORE		
<b>Design:</b>	PROPOSAL 1		

<b>Project</b>	Weld County		
<b>Map System:</b>	US State Plane 1983	<b>System Datum:</b>	Mean Sea Level
<b>Geo Datum:</b>	North American Datum 1983		
<b>Map Zone:</b>	Colorado Northern Zone		

Site		Sec 7-T4N-R68W			
Site Position:		Northing:	1,359,838.99 usft	Latitude:	40° 19' 12.839 N
From:	Lat/Long	Easting:	3,129,136.57 usft	Longitude:	105° 2' 12.746 W
Position Uncertainty:	0.00 usft	Slot Radius:	13.200 in	Grid Convergence:	0.30 °

Well	TROTT 7W-20-6N					
Well Position	+N/-S	1,528.56 usft	Northing:	1,361,363.30 usft	Latitude:	40° 19' 27.944 N
	+E/-W	-810.53 usft	Easting:	3,128,318.06 usft	Longitude:	105° 2' 23.212 W
Position Uncertainty		0.00 usft	Wellhead Elevation:		Ground Level:	5,032.00 usft

<b>Wellbore</b>	ORIGINAL WELLBORE				
<b>Magnetics</b>	<b>Model Name</b>	<b>Sample Date</b>	<b>Declination (°)</b>	<b>Dip Angle (°)</b>	<b>Field Strength (nT)</b>
	IGRF2015	4/4/2017	8.37	66.76	52,345.17813070

<b>Design</b>	PROPOSAL 1			
<b>Audit Notes:</b>				
<b>Version:</b>	<b>Phase:</b>	PROTOTYPE	<b>Tie On Depth:</b>	0.00
<b>Vertical Section:</b>	<b>Depth From (TVD) (usft)</b>	<b>+N/-S (usft)</b>	<b>+E/-W (usft)</b>	<b>Direction (°)</b>
	0.00	0.00	0.00	272.19

<b>Plan Survey Tool Program</b>	<b>Date</b>	2/26/2018		
<b>Depth From (usft)</b>	<b>Depth To (usft)</b>	<b>Survey (Wellbore)</b>	<b>Tool Name</b>	<b>Remarks</b>
1	0.00	16,367.89	PROPOSAL 1 (ORIGINAL WELL	MWD OWSG
			OWSG MWD - Standard	

<b>Plan Sections</b>										
<b>Measured Depth (usft)</b>	<b>Inclination (°)</b>	<b>Azimuth (°)</b>	<b>Vertical Depth (usft)</b>	<b>+N/-S (usft)</b>	<b>+E/-W (usft)</b>	<b>Dogleg Rate (°/100ft)</b>	<b>Build Rate (°/100ft)</b>	<b>Turn Rate (°/100ft)</b>	<b>TFO (°)</b>	<b>Target</b>
0.00	0.00	0.00	0.00	0.00	0.00	0.00	0.00	0.00	0.00	
300.00	0.00	0.00	300.00	0.00	0.00	0.00	0.00	0.00	0.00	
1,231.03	18.62	70.66	1,214.73	49.66	141.50	2.00	2.00	0.00	70.66	
4,605.20	18.62	70.66	4,412.27	406.44	1,158.09	0.00	0.00	0.00	0.00	
5,536.23	0.00	0.00	5,327.00	456.10	1,299.59	2.00	-2.00	0.00	180.00	
5,566.23	0.00	0.00	5,357.00	456.10	1,299.59	0.00	0.00	0.00	0.00	
6,466.33	90.00	269.42	5,930.00	450.29	726.59	10.00	10.00	-10.06	269.42	TROTT 6 - LP REV 2
16,367.89	90.00	269.42	5,930.00	350.35	-9,174.47	0.00	0.00	0.00	135.88	TROTT 6 - PBHL REV 1

# Planning Report

<b>Database:</b>	EDT_32Bit_ODBC	<b>Local Co-ordinate Reference:</b>	Well TROTT 7W-20-6N
<b>Company:</b>	EXTRACTION OIL & GAS	<b>TVD Reference:</b>	KB 25' @ 5057.00usft
<b>Project:</b>	Weld County	<b>MD Reference:</b>	KB 25' @ 5057.00usft
<b>Site:</b>	Sec 7-T4N-R68W	<b>North Reference:</b>	True
<b>Well:</b>	TROTT 7W-20-6N	<b>Survey Calculation Method:</b>	Minimum Curvature
<b>Wellbore:</b>	ORIGINAL WELLBORE		
<b>Design:</b>	PROPOSAL 1		

Planned Survey									
Measured Depth (usft)	Inclination (°)	Azimuth (°)	Vertical Depth (usft)	+N/-S (usft)	+E/-W (usft)	Vertical Section (usft)	Dogleg Rate (°/100ft)	Build Rate (°/100ft)	Turn Rate (°/100ft)
0.00	0.00	0.00	0.00	0.00	0.00	0.00	0.00	0.00	0.00
100.00	0.00	0.00	100.00	0.00	0.00	0.00	0.00	0.00	0.00
200.00	0.00	0.00	200.00	0.00	0.00	0.00	0.00	0.00	0.00
300.00	0.00	0.00	300.00	0.00	0.00	0.00	0.00	0.00	0.00
Start Build 2.00									
400.00	2.00	70.66	399.98	0.58	1.65	-1.62	2.00	2.00	0.00
500.00	4.00	70.66	499.84	2.31	6.58	-6.49	2.00	2.00	0.00
600.00	6.00	70.66	599.45	5.20	14.81	-14.60	2.00	2.00	0.00
700.00	8.00	70.66	698.70	9.23	26.31	-25.94	2.00	2.00	0.00
800.00	10.00	70.66	797.47	14.41	41.07	-40.49	2.00	2.00	0.00
900.00	12.00	70.66	895.62	20.73	59.07	-58.24	2.00	2.00	0.00
1,000.00	14.00	70.66	993.06	28.18	80.30	-79.16	2.00	2.00	0.00
1,100.00	16.00	70.66	1,089.64	36.75	104.72	-103.24	2.00	2.00	0.00
1,200.00	18.00	70.66	1,185.27	46.43	132.30	-130.43	2.00	2.00	0.00
1,231.03	18.62	70.66	1,214.73	49.66	141.50	-139.50	2.00	2.00	0.00
Start 3374.17 hold at 1231.03 MD									
1,300.00	18.62	70.66	1,280.09	56.95	162.28	-159.99	0.00	0.00	0.00
1,400.00	18.62	70.66	1,374.85	67.53	192.41	-189.69	0.00	0.00	0.00
1,500.00	18.62	70.66	1,469.62	78.10	222.54	-219.39	0.00	0.00	0.00
1,600.00	18.62	70.66	1,564.38	88.67	252.67	-249.10	0.00	0.00	0.00
1,700.00	18.62	70.66	1,659.15	99.25	282.79	-278.80	0.00	0.00	0.00
1,800.00	18.62	70.66	1,753.91	109.82	312.92	-308.50	0.00	0.00	0.00
1,900.00	18.62	70.66	1,848.68	120.40	343.05	-338.21	0.00	0.00	0.00
2,000.00	18.62	70.66	1,943.44	130.97	373.18	-367.91	0.00	0.00	0.00
2,100.00	18.62	70.66	2,038.21	141.54	403.31	-397.61	0.00	0.00	0.00
2,200.00	18.62	70.66	2,132.97	152.12	433.44	-427.32	0.00	0.00	0.00
2,300.00	18.62	70.66	2,227.74	162.69	463.57	-457.02	0.00	0.00	0.00
2,400.00	18.62	70.66	2,322.51	173.27	493.69	-486.72	0.00	0.00	0.00
2,492.33	18.62	70.66	2,410.00	183.03	521.51	-514.15	0.00	0.00	0.00
PARKMAN									
2,500.00	18.62	70.66	2,417.27	183.84	523.82	-516.43	0.00	0.00	0.00
2,600.00	18.62	70.66	2,512.04	194.41	553.95	-546.13	0.00	0.00	0.00
2,700.00	18.62	70.66	2,606.80	204.99	584.08	-575.83	0.00	0.00	0.00
2,800.00	18.62	70.66	2,701.57	215.56	614.21	-605.54	0.00	0.00	0.00
2,900.00	18.62	70.66	2,796.33	226.13	644.34	-635.24	0.00	0.00	0.00
3,000.00	18.62	70.66	2,891.10	236.71	674.47	-664.94	0.00	0.00	0.00
3,100.00	18.62	70.66	2,985.86	247.28	704.59	-694.64	0.00	0.00	0.00
3,125.47	18.62	70.66	3,010.00	249.98	712.27	-702.21	0.00	0.00	0.00
SUSSEX									
3,200.00	18.62	70.66	3,080.63	257.86	734.72	-724.35	0.00	0.00	0.00
3,300.00	18.62	70.66	3,175.39	268.43	764.85	-754.05	0.00	0.00	0.00
3,400.00	18.62	70.66	3,270.16	279.00	794.98	-783.75	0.00	0.00	0.00
3,500.00	18.62	70.66	3,364.92	289.58	825.11	-813.46	0.00	0.00	0.00
3,589.78	18.62	70.66	3,450.00	299.07	852.16	-840.12	0.00	0.00	0.00
SHANNON									
3,600.00	18.62	70.66	3,459.69	300.15	855.24	-843.16	0.00	0.00	0.00
3,700.00	18.62	70.66	3,554.45	310.72	885.37	-872.86	0.00	0.00	0.00
3,800.00	18.62	70.66	3,649.22	321.30	915.49	-902.57	0.00	0.00	0.00
3,900.00	18.62	70.66	3,743.98	331.87	945.62	-932.27	0.00	0.00	0.00
4,000.00	18.62	70.66	3,838.75	342.45	975.75	-961.97	0.00	0.00	0.00
4,100.00	18.62	70.66	3,933.52	353.02	1,005.88	-991.68	0.00	0.00	0.00
4,200.00	18.62	70.66	4,028.28	363.59	1,036.01	-1,021.38	0.00	0.00	0.00
4,300.00	18.62	70.66	4,123.05	374.17	1,066.14	-1,051.08	0.00	0.00	0.00

# Planning Report

<b>Database:</b>	EDT_32Bit_ODBC	<b>Local Co-ordinate Reference:</b>	Well TROTT 7W-20-6N
<b>Company:</b>	EXTRACTION OIL & GAS	<b>TVD Reference:</b>	KB 25' @ 5057.00usft
<b>Project:</b>	Weld County	<b>MD Reference:</b>	KB 25' @ 5057.00usft
<b>Site:</b>	Sec 7-T4N-R68W	<b>North Reference:</b>	True
<b>Well:</b>	TROTT 7W-20-6N	<b>Survey Calculation Method:</b>	Minimum Curvature
<b>Wellbore:</b>	ORIGINAL WELLBORE		
<b>Design:</b>	PROPOSAL 1		

Planned Survey										
Measured Depth (usft)	Inclination (°)	Azimuth (°)	Vertical Depth (usft)	+N/-S (usft)	+E/-W (usft)	Vertical Section (usft)	Dogleg Rate (°/100ft)	Build Rate (°/100ft)	Turn Rate (°/100ft)	
4,400.00	18.62	70.66	4,217.81	384.74	1,096.27	-1,080.79	0.00	0.00	0.00	
4,500.00	18.62	70.66	4,312.58	395.32	1,126.39	-1,110.49	0.00	0.00	0.00	
4,605.20	18.62	70.66	4,412.27	406.44	1,158.09	-1,141.74	0.00	0.00	0.00	
Start Drop -2.00										
4,700.00	16.72	70.66	4,502.59	415.97	1,185.24	-1,168.51	2.00	-2.00	0.00	
4,800.00	14.72	70.66	4,598.84	424.94	1,210.81	-1,193.72	2.00	-2.00	0.00	
4,900.00	12.72	70.66	4,695.98	432.80	1,233.20	-1,215.79	2.00	-2.00	0.00	
5,000.00	10.72	70.66	4,793.89	439.53	1,252.37	-1,234.69	2.00	-2.00	0.00	
5,100.00	8.72	70.66	4,892.45	445.12	1,268.31	-1,250.40	2.00	-2.00	0.00	
5,200.00	6.72	70.66	4,991.54	449.57	1,280.99	-1,262.90	2.00	-2.00	0.00	
5,300.00	4.72	70.66	5,091.03	452.88	1,290.40	-1,272.18	2.00	-2.00	0.00	
5,400.00	2.72	70.66	5,190.82	455.03	1,296.53	-1,278.23	2.00	-2.00	0.00	
5,500.00	0.72	70.66	5,290.77	456.02	1,299.37	-1,281.03	2.00	-2.00	0.00	
5,536.23	0.00	0.00	5,327.00	456.10	1,299.59	-1,281.24	2.00	-2.00	0.00	
Start 30.00 hold at 5536.23 MD										
5,566.23	0.00	0.00	5,357.00	456.10	1,299.59	-1,281.24	0.00	0.00	0.00	
Start DLS 10.00 TFO 269.42										
5,600.00	3.38	269.42	5,390.75	456.09	1,298.60	-1,280.25	10.00	10.00	0.00	
5,650.00	8.38	269.42	5,440.47	456.04	1,293.48	-1,275.13	10.00	10.00	0.00	
5,700.00	13.38	269.42	5,489.56	455.94	1,284.05	-1,265.71	10.00	10.00	0.00	
5,750.00	18.38	269.42	5,537.63	455.80	1,270.38	-1,252.06	10.00	10.00	0.00	
5,800.00	23.37	269.42	5,584.34	455.62	1,252.57	-1,234.27	10.00	10.00	0.00	
5,850.00	28.37	269.42	5,629.31	455.40	1,230.75	-1,212.48	10.00	10.00	0.00	
5,900.00	33.37	269.42	5,672.21	455.14	1,205.10	-1,186.86	10.00	10.00	0.00	
5,950.00	38.37	269.42	5,712.71	454.85	1,175.82	-1,157.60	10.00	10.00	0.00	
6,000.00	43.37	269.42	5,750.51	454.51	1,143.11	-1,124.93	10.00	10.00	0.00	
6,050.00	48.37	269.42	5,785.31	454.15	1,107.23	-1,089.09	10.00	10.00	0.00	
6,100.00	53.37	269.42	5,816.85	453.76	1,068.46	-1,050.36	10.00	10.00	0.00	
6,150.00	58.37	269.42	5,844.89	453.34	1,027.08	-1,009.04	10.00	10.00	0.00	
6,200.00	63.37	269.42	5,869.23	452.89	983.42	-965.42	10.00	10.00	0.00	
6,250.00	68.37	269.42	5,889.66	452.43	937.81	-919.86	10.00	10.00	0.00	
6,300.00	73.37	269.42	5,906.04	451.95	890.59	-872.69	10.00	10.00	0.00	
6,350.00	78.37	269.42	5,918.24	451.46	842.12	-824.28	10.00	10.00	0.00	
6,359.09	79.28	269.42	5,920.00	451.37	833.20	-815.37	10.00	10.00	0.00	
NIOBRARA										
6,400.00	83.37	269.42	5,926.17	450.96	792.77	-774.98	10.00	10.00	0.00	
6,450.00	88.37	269.42	5,929.77	450.46	742.92	-725.19	10.00	10.00	0.00	
6,466.33	90.00	269.42	5,930.00	450.29	726.59	-708.88	10.00	10.00	0.00	
Start DLS 0.00 TFO 135.88										
6,500.00	90.00	269.42	5,930.00	449.95	692.92	-675.25	0.00	0.00	0.00	
6,600.00	90.00	269.42	5,929.99	448.94	592.93	-575.36	0.00	0.00	0.00	
6,700.00	90.00	269.42	5,929.99	447.92	492.93	-475.48	0.00	0.00	0.00	
6,800.00	90.00	269.42	5,929.99	446.91	392.94	-375.60	0.00	0.00	0.00	
6,900.00	90.00	269.42	5,929.98	445.90	292.94	-275.71	0.00	0.00	0.00	
7,000.00	90.00	269.42	5,929.98	444.88	192.95	-175.83	0.00	0.00	0.00	
7,100.00	90.00	269.42	5,929.97	443.87	92.95	-75.95	0.00	0.00	0.00	
7,200.00	90.00	269.42	5,929.97	442.86	-7.04	23.94	0.00	0.00	0.00	
7,300.00	90.00	269.42	5,929.97	441.84	-107.04	123.82	0.00	0.00	0.00	
7,400.00	90.00	269.42	5,929.96	440.83	-207.03	223.70	0.00	0.00	0.00	
7,500.00	90.00	269.42	5,929.96	439.82	-307.03	323.59	0.00	0.00	0.00	
7,600.00	90.00	269.42	5,929.96	438.80	-407.02	423.47	0.00	0.00	0.00	
7,700.00	90.00	269.42	5,929.95	437.79	-507.02	523.35	0.00	0.00	0.00	
7,800.00	90.00	269.42	5,929.95	436.78	-607.01	623.24	0.00	0.00	0.00	

# Planning Report

<b>Database:</b>	EDT_32Bit_ODBC	<b>Local Co-ordinate Reference:</b>	Well TROTT 7W-20-6N
<b>Company:</b>	EXTRACTION OIL & GAS	<b>TVD Reference:</b>	KB 25' @ 5057.00usft
<b>Project:</b>	Weld County	<b>MD Reference:</b>	KB 25' @ 5057.00usft
<b>Site:</b>	Sec 7-T4N-R68W	<b>North Reference:</b>	True
<b>Well:</b>	TROTT 7W-20-6N	<b>Survey Calculation Method:</b>	Minimum Curvature
<b>Wellbore:</b>	ORIGINAL WELLBORE		
<b>Design:</b>	PROPOSAL 1		

Planned Survey										
Measured Depth (usft)	Inclination (°)	Azimuth (°)	Vertical Depth (usft)	+N/-S (usft)	+E/-W (usft)	Vertical Section (usft)	Dogleg Rate (°/100ft)	Build Rate (°/100ft)	Turn Rate (°/100ft)	
7,900.00	90.00	269.42	5,929.95	435.77	-707.01	723.12	0.00	0.00	0.00	
8,000.00	90.00	269.42	5,929.94	434.75	-807.00	823.00	0.00	0.00	0.00	
8,100.00	90.00	269.42	5,929.94	433.74	-907.00	922.89	0.00	0.00	0.00	
8,200.00	90.00	269.42	5,929.94	432.73	-1,006.99	1,022.77	0.00	0.00	0.00	
8,300.00	90.00	269.42	5,929.93	431.72	-1,106.99	1,122.65	0.00	0.00	0.00	
8,400.00	90.00	269.42	5,929.93	430.71	-1,206.98	1,222.54	0.00	0.00	0.00	
8,500.00	90.00	269.42	5,929.93	429.69	-1,306.98	1,322.42	0.00	0.00	0.00	
8,600.00	90.00	269.42	5,929.93	428.68	-1,406.97	1,422.31	0.00	0.00	0.00	
8,700.00	90.00	269.42	5,929.92	427.67	-1,506.97	1,522.19	0.00	0.00	0.00	
8,800.00	90.00	269.42	5,929.92	426.66	-1,606.96	1,622.07	0.00	0.00	0.00	
8,900.00	90.00	269.42	5,929.92	425.65	-1,706.96	1,721.96	0.00	0.00	0.00	
9,000.00	90.00	269.42	5,929.92	424.63	-1,806.95	1,821.84	0.00	0.00	0.00	
9,100.00	90.00	269.42	5,929.91	423.62	-1,906.95	1,921.72	0.00	0.00	0.00	
9,200.00	90.00	269.42	5,929.91	422.61	-2,006.94	2,021.61	0.00	0.00	0.00	
9,300.00	90.00	269.42	5,929.91	421.60	-2,106.94	2,121.49	0.00	0.00	0.00	
9,400.00	90.00	269.42	5,929.91	420.59	-2,206.93	2,221.37	0.00	0.00	0.00	
9,500.00	90.00	269.42	5,929.91	419.58	-2,306.93	2,321.26	0.00	0.00	0.00	
9,600.00	90.00	269.42	5,929.90	418.57	-2,406.92	2,421.14	0.00	0.00	0.00	
9,700.00	90.00	269.42	5,929.90	417.56	-2,506.92	2,521.02	0.00	0.00	0.00	
9,800.00	90.00	269.42	5,929.90	416.55	-2,606.91	2,620.91	0.00	0.00	0.00	
9,900.00	90.00	269.42	5,929.90	415.53	-2,706.91	2,720.79	0.00	0.00	0.00	
10,000.00	90.00	269.42	5,929.90	414.52	-2,806.90	2,820.67	0.00	0.00	0.00	
10,100.00	90.00	269.42	5,929.90	413.51	-2,906.90	2,920.56	0.00	0.00	0.00	
10,200.00	90.00	269.42	5,929.90	412.50	-3,006.89	3,020.44	0.00	0.00	0.00	
10,300.00	90.00	269.42	5,929.90	411.49	-3,106.88	3,120.32	0.00	0.00	0.00	
10,400.00	90.00	269.42	5,929.89	410.48	-3,206.88	3,220.21	0.00	0.00	0.00	
10,500.00	90.00	269.42	5,929.89	409.47	-3,306.87	3,320.09	0.00	0.00	0.00	
10,600.00	90.00	269.42	5,929.89	408.46	-3,406.87	3,419.97	0.00	0.00	0.00	
10,700.00	90.00	269.42	5,929.89	407.45	-3,506.86	3,519.86	0.00	0.00	0.00	
10,800.00	90.00	269.42	5,929.89	406.44	-3,606.86	3,619.74	0.00	0.00	0.00	
10,900.00	90.00	269.42	5,929.89	405.43	-3,706.85	3,719.63	0.00	0.00	0.00	
11,000.00	90.00	269.42	5,929.89	404.42	-3,806.85	3,819.51	0.00	0.00	0.00	
11,100.00	90.00	269.42	5,929.89	403.41	-3,906.84	3,919.39	0.00	0.00	0.00	
11,200.00	90.00	269.42	5,929.89	402.40	-4,006.84	4,019.28	0.00	0.00	0.00	
11,300.00	90.00	269.42	5,929.89	401.39	-4,106.83	4,119.16	0.00	0.00	0.00	
11,400.00	90.00	269.42	5,929.89	400.38	-4,206.83	4,219.04	0.00	0.00	0.00	
11,500.00	90.00	269.42	5,929.89	399.37	-4,306.82	4,318.93	0.00	0.00	0.00	
11,600.00	90.00	269.42	5,929.89	398.36	-4,406.82	4,418.81	0.00	0.00	0.00	
11,700.00	90.00	269.42	5,929.89	397.36	-4,506.81	4,518.69	0.00	0.00	0.00	
11,800.00	90.00	269.42	5,929.89	396.35	-4,606.81	4,618.58	0.00	0.00	0.00	
11,900.00	90.00	269.42	5,929.89	395.34	-4,706.80	4,718.46	0.00	0.00	0.00	
12,000.00	90.00	269.42	5,929.89	394.33	-4,806.80	4,818.34	0.00	0.00	0.00	
12,100.00	90.00	269.42	5,929.89	393.32	-4,906.79	4,918.23	0.00	0.00	0.00	
12,200.00	90.00	269.42	5,929.89	392.31	-5,006.79	5,018.11	0.00	0.00	0.00	
12,300.00	90.00	269.42	5,929.89	391.30	-5,106.78	5,118.00	0.00	0.00	0.00	
12,400.00	90.00	269.42	5,929.89	390.29	-5,206.78	5,217.88	0.00	0.00	0.00	
12,500.00	90.00	269.42	5,929.89	389.29	-5,306.77	5,317.76	0.00	0.00	0.00	
12,600.00	90.00	269.42	5,929.90	388.28	-5,406.77	5,417.65	0.00	0.00	0.00	
12,700.00	90.00	269.42	5,929.90	387.27	-5,506.76	5,517.53	0.00	0.00	0.00	
12,800.00	90.00	269.42	5,929.90	386.26	-5,606.76	5,617.41	0.00	0.00	0.00	
12,900.00	90.00	269.42	5,929.90	385.25	-5,706.75	5,717.30	0.00	0.00	0.00	
13,000.00	90.00	269.42	5,929.90	384.24	-5,806.75	5,817.18	0.00	0.00	0.00	
13,100.00	90.00	269.42	5,929.90	383.24	-5,906.74	5,917.06	0.00	0.00	0.00	
13,200.00	90.00	269.42	5,929.90	382.23	-6,006.74	6,016.95	0.00	0.00	0.00	

## Planning Report

<b>Database:</b>	EDT_32Bit_ODBC	<b>Local Co-ordinate Reference:</b>	Well TROTT 7W-20-6N
<b>Company:</b>	EXTRACTION OIL & GAS	<b>TVD Reference:</b>	KB 25' @ 5057.00usft
<b>Project:</b>	Weld County	<b>MD Reference:</b>	KB 25' @ 5057.00usft
<b>Site:</b>	Sec 7-T4N-R68W	<b>North Reference:</b>	True
<b>Well:</b>	TROTT 7W-20-6N	<b>Survey Calculation Method:</b>	Minimum Curvature
<b>Wellbore:</b>	ORIGINAL WELLBORE		
<b>Design:</b>	PROPOSAL 1		

Planned Survey										
Measured Depth (usft)	Inclination (°)	Azimuth (°)	Vertical Depth (usft)	+N/-S (usft)	+E/-W (usft)	Vertical Section (usft)	Dogleg Rate (°/100ft)	Build Rate (°/100ft)	Turn Rate (°/100ft)	
13,300.00	90.00	269.42	5,929.91	381.22	-6,106.73	6,116.83	0.00	0.00	0.00	
13,400.00	90.00	269.42	5,929.91	380.21	-6,206.73	6,216.72	0.00	0.00	0.00	
13,500.00	90.00	269.42	5,929.91	379.21	-6,306.72	6,316.60	0.00	0.00	0.00	
13,600.00	90.00	269.42	5,929.91	378.20	-6,406.72	6,416.48	0.00	0.00	0.00	
13,700.00	90.00	269.42	5,929.91	377.19	-6,506.71	6,516.37	0.00	0.00	0.00	
13,800.00	90.00	269.42	5,929.92	376.18	-6,606.71	6,616.25	0.00	0.00	0.00	
13,900.00	90.00	269.42	5,929.92	375.18	-6,706.70	6,716.13	0.00	0.00	0.00	
14,000.00	90.00	269.42	5,929.92	374.17	-6,806.70	6,816.02	0.00	0.00	0.00	
14,100.00	90.00	269.42	5,929.92	373.16	-6,906.69	6,915.90	0.00	0.00	0.00	
14,200.00	90.00	269.42	5,929.92	372.15	-7,006.69	7,015.78	0.00	0.00	0.00	
14,300.00	90.00	269.42	5,929.93	371.15	-7,106.68	7,115.67	0.00	0.00	0.00	
14,400.00	90.00	269.42	5,929.93	370.14	-7,206.68	7,215.55	0.00	0.00	0.00	
14,500.00	90.00	269.42	5,929.93	369.13	-7,306.67	7,315.44	0.00	0.00	0.00	
14,600.00	90.00	269.42	5,929.94	368.13	-7,406.67	7,415.32	0.00	0.00	0.00	
14,700.00	90.00	269.42	5,929.94	367.12	-7,506.66	7,515.20	0.00	0.00	0.00	
14,800.00	90.00	269.42	5,929.94	366.11	-7,606.66	7,615.09	0.00	0.00	0.00	
14,900.00	90.00	269.42	5,929.94	365.11	-7,706.65	7,714.97	0.00	0.00	0.00	
15,000.00	90.00	269.42	5,929.95	364.10	-7,806.65	7,814.85	0.00	0.00	0.00	
15,100.00	90.00	269.42	5,929.95	363.10	-7,906.64	7,914.74	0.00	0.00	0.00	
15,200.00	90.00	269.42	5,929.95	362.09	-8,006.64	8,014.62	0.00	0.00	0.00	
15,300.00	90.00	269.42	5,929.96	361.08	-8,106.63	8,114.51	0.00	0.00	0.00	
15,400.00	90.00	269.42	5,929.96	360.08	-8,206.63	8,214.39	0.00	0.00	0.00	
15,500.00	90.00	269.42	5,929.96	359.07	-8,306.62	8,314.27	0.00	0.00	0.00	
15,600.00	90.00	269.42	5,929.97	358.07	-8,406.62	8,414.16	0.00	0.00	0.00	
15,700.00	90.00	269.42	5,929.97	357.06	-8,506.61	8,514.04	0.00	0.00	0.00	
15,800.00	90.00	269.42	5,929.98	356.05	-8,606.61	8,613.92	0.00	0.00	0.00	
15,900.00	90.00	269.42	5,929.98	355.05	-8,706.60	8,713.81	0.00	0.00	0.00	
16,000.00	90.00	269.42	5,929.98	354.04	-8,806.60	8,813.69	0.00	0.00	0.00	
16,100.00	90.00	269.42	5,929.99	353.04	-8,906.59	8,913.58	0.00	0.00	0.00	
16,200.00	90.00	269.42	5,929.99	352.03	-9,006.59	9,013.46	0.00	0.00	0.00	
16,300.00	90.00	269.42	5,930.00	351.03	-9,106.58	9,113.34	0.00	0.00	0.00	
16,367.89	90.00	269.42	5,930.00	350.35	-9,174.47	9,181.16	0.00	0.00	0.00	
TD at 16367.89										

Design Targets										
Target Name	Dip Angle (°)	Dip Dir. (°)	TVD (usft)	+N/-S (usft)	+E/-W (usft)	Northing (usft)	Easting (usft)	Latitude		
- hit/miss target										
- Shape								Longitude		
TROTT 6 - PBHL REV 2	0.00	0.00	5,930.00	350.35	-9,174.47	1,361,666.02	3,119,141.90	40° 19' 31.390 N		
- plan hits target center										
- Point										
TROTT 6 - LP REV 2	0.00	0.00	5,930.00	450.29	726.59	1,361,817.35	3,129,042.31	40° 19' 32.394 N		
- plan hits target center										
- Point										

## Planning Report

<b>Database:</b>	EDT_32Bit_ODBC	<b>Local Co-ordinate Reference:</b>	Well TROTT 7W-20-6N
<b>Company:</b>	EXTRACTION OIL & GAS	<b>TVD Reference:</b>	KB 25' @ 5057.00usft
<b>Project:</b>	Weld County	<b>MD Reference:</b>	KB 25' @ 5057.00usft
<b>Site:</b>	Sec 7-T4N-R68W	<b>North Reference:</b>	True
<b>Well:</b>	TROTT 7W-20-6N	<b>Survey Calculation Method:</b>	Minimum Curvature
<b>Wellbore:</b>	ORIGINAL WELLBORE		
<b>Design:</b>	PROPOSAL 1		

Formations					
Measured Depth (usft)	Vertical Depth (usft)	Name	Lithology	Dip (°)	Dip Direction (°)
2,492.33	2,410.00	PARKMAN			
3,125.47	3,010.00	SUSSEX			
3,589.78	3,450.00	SHANNON			
6,359.09	5,920.00	NIOBRARA			

Plan Annotations				
Measured Depth (usft)	Vertical Depth (usft)	Local Coordinates		Comment
		+N/-S (usft)	+E/-W (usft)	
300.00	300.00	0.00	0.00	Start Build 2.00
1,231.03	1,214.73	49.66	141.50	Start 3374.17 hold at 1231.03 MD
4,605.20	4,412.27	406.44	1,158.09	Start Drop -2.00
5,536.23	5,327.00	456.10	1,299.59	Start 30.00 hold at 5536.23 MD
5,566.23	5,357.00	456.10	1,299.59	Start DLS 10.00 TFO 269.42
6,466.33	5,930.00	450.29	726.59	Start DLS 0.00 TFO 135.88
16,367.89	5,930.00	350.35	-9,174.47	TD at 16367.89