



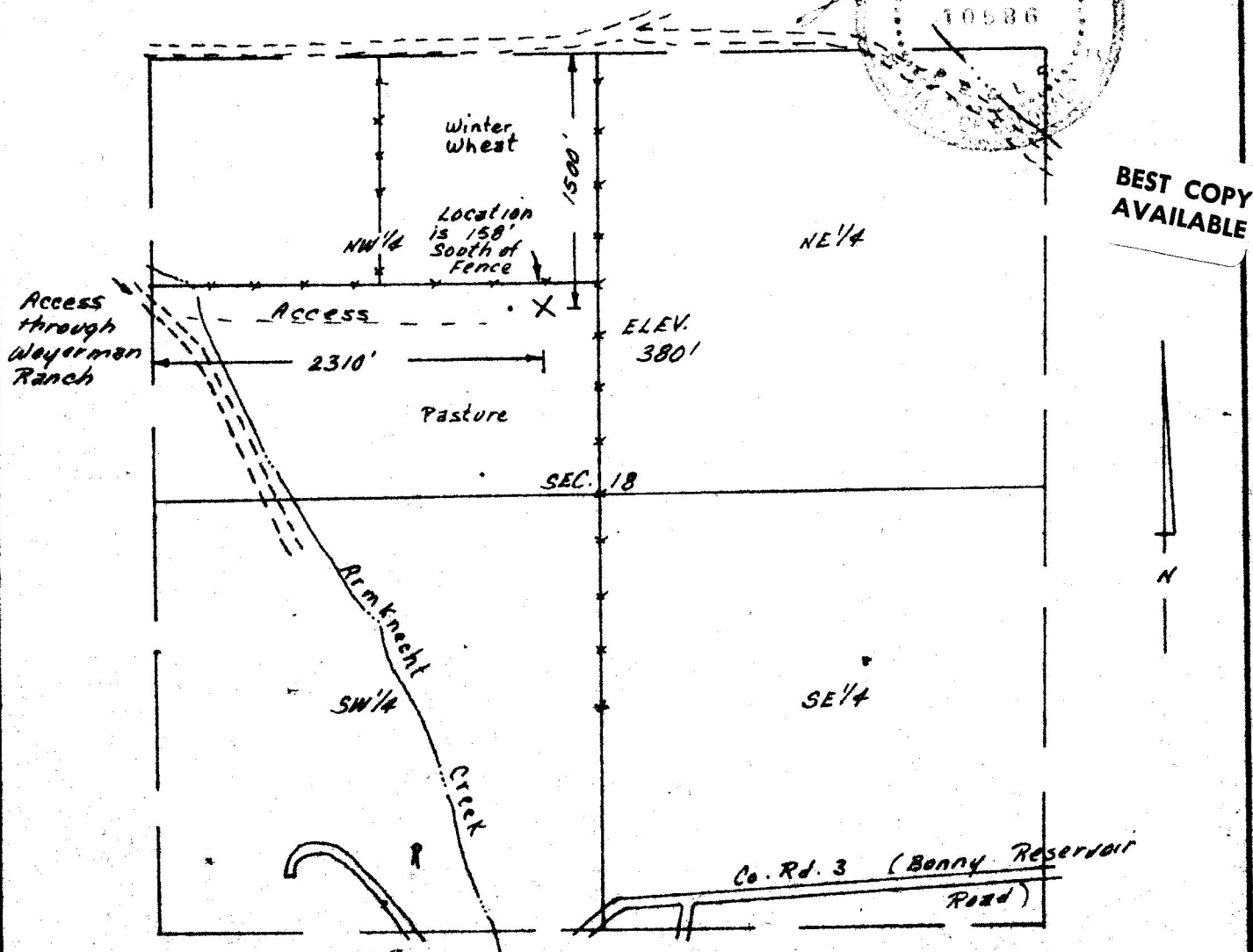
I hereby certify that the accompanying plat is an accurate representation of a correct survey showing the location of a proposed well. This location may be described as a point 1500 feet South of the North line and 2310 feet East of the West line of Section 18, T5S, R43W of the 6th PM, Yuma County, Colorado.

The surface elevation at this point is 3801 feet above sea level.

RECEIVED

FEB 8 1982

COLORADO, ON 8 1982



BEST COPY AVAILABLE

X SURVEYED POINT  
• REFERENCE POINT (200' West)

**HARMON**  
**ENGINEERING**  
**SERVICES**

Weyerman #6-18  
SE 1/4 NW 1/4, Section 18 T5S R43W

Cabot Petroleum Corp. 27 January 1982  
Yuma County, Colorado

2002-13

