

Interim Reclamation Inspection

March 7, 2018

Operator: CRESTONE PEAK RESOURCES OPERATING LLC- #10633

Location ID: 305447

Inspection Document #: 682403370

Weld County, CO

SWNW Section 7 T1N R68W

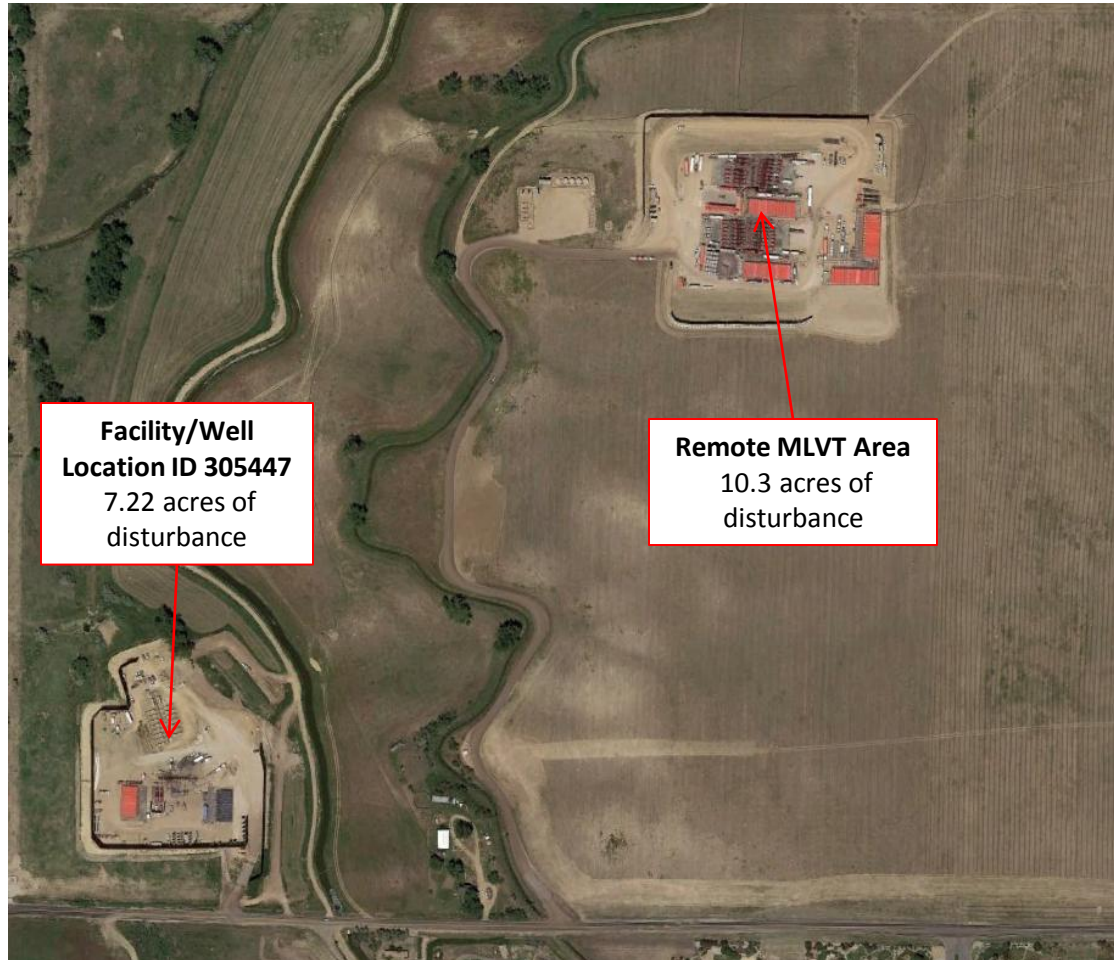
Chris Binschus
Reclamation Specialist, COGCC



COLORADO
Oil & Gas Conservation
Commission

Department of Natural Resources

Inspection Photos
Location Name: Woolley-Sosa-Becky
Location ID: 305447



Google Earth aerial imagery taken June 9, 2017 during drilling operations illustrates the total disturbance to be approximately 17.5 acres. This location is not in compliance with the approved Form 2A for the permitted disturbance area. This inspection only documents the facility/well location; however, the Operator shall comply with 1000 series rules and regulations for both the facility/well location and the remote MLVT area.

Inspection Photos
Location Name: Woolley-Sosa-Becky
Location ID: 305447



Photo 1. Photo taken from the entrance of the facility/well location. Sign appears to be in compliance with applicable rules and regulations.



Photo 2. Photo taken from the entrance of the facility/well location, facing West. Appears the Operator has reduced areas only reasonably needed for production operations per Rule 1003.

Inspection Photos
Location Name: Woolley-Sosa-Becky
Location ID: 305447



Photo 3. Photo taken from the western facility/well location, facing West. See comments under Photo 2.



Photo 4. Photo taken from the northeastern facility/well location, facing West. See comments under Photo 2.

Inspection Photos
Location Name: Woolley-Sosa-Becky
Location ID: 305447



Photo 5. Photo taken from the northeastern facility/well location, facing East. Appears the Operator has performed a seedbed prep along the cropland area. Staff would recommend the Operator ensure erosion controls are implemented throughout all disturbance areas, as these areas would be susceptible to wind and water erosion.



Photo 6. Photo taken from the northeastern facility/well location, facing South. See comments under Photo 2.