

# Inspection Photos

02/26/2018

Operator: WINSLOW RESOURCES INC - 97065

Location ID: 390108

Inspection Doc. Number: 682503195

Logan County, CO

Aaron Trujillo  
NE Reclamation Specialist  
COGCC

Inspection Photos  
Operator: WINSLOW RESOURCES INC - 97065  
Location ID: 390108



**Photo 1:** Photo taken from the south end of the location, facing northeast. Photo shows erosion and contouring concerns remain evident on the east and northeast ends of the location.



**Photo 2:** Photo taken from the south end of the location, facing northeast. Photo shows erosion and contouring concerns remain evident on the east and northeast ends of the location. Two-track road seen in photo is not the historic access road and appears to have been created relatively recently based on historic imagery.



Inspection Photos  
Operator: WINSLOW RESOURCES INC - 97065  
Location ID: 390108



**Photo 3:** Photo taken from the south end of the location, facing northwest. The western half of the location appears to have been adequately revegetated and reclaimed.



**Photo 4:** Photo taken from the south end of the location, facing west. The western half of the location appears to have been adequately revegetated and reclaimed.





**Photo 5:** Photo taken from the east end of the location, facing east. Photo shows areas of the location where desirable perennial vegetation has failed to establish and stormwater erosion is causing degradation. These concerns appear to have been documented in previous inspections.



**Photo 6:** Photo taken from the east end of the location, facing northeast. Photo shows areas of the location where desirable perennial vegetation has failed to establish and stormwater erosion is causing degradation. These concerns appear to have been documented in previous inspections.





**Photo 7:** Photo taken from the northeast end of the location, facing east. Photo shows areas where stormwater runoff from the access road has eroded a large gully onto the location. 6 foot measuring stick for reference.



**Photo 8:** Photo taken from the erosion degradation observed on the northeast end of the location. Photo shows area of exposed pipeline likely revealed due to stormwater erosion





**Photo 9:** Photo taken from the northeast end of the location, facing west. Photo shows areas where stormwater runoff from the access road has eroded a large gully (see in photo 7) onto the location. 6 foot measuring stick for reference.



**Photo 10:** Photo taken from the access road on the northeast end of the location, facing north. Photo shows access road does not appear to have been adequately contoured and stabilized. Access road has acted as a channel for stormwater, allowing flows to concentrate and cause stormwater erosion degradation and incising to occur on both the access road and location. These concerns have been documented in previous inspections.

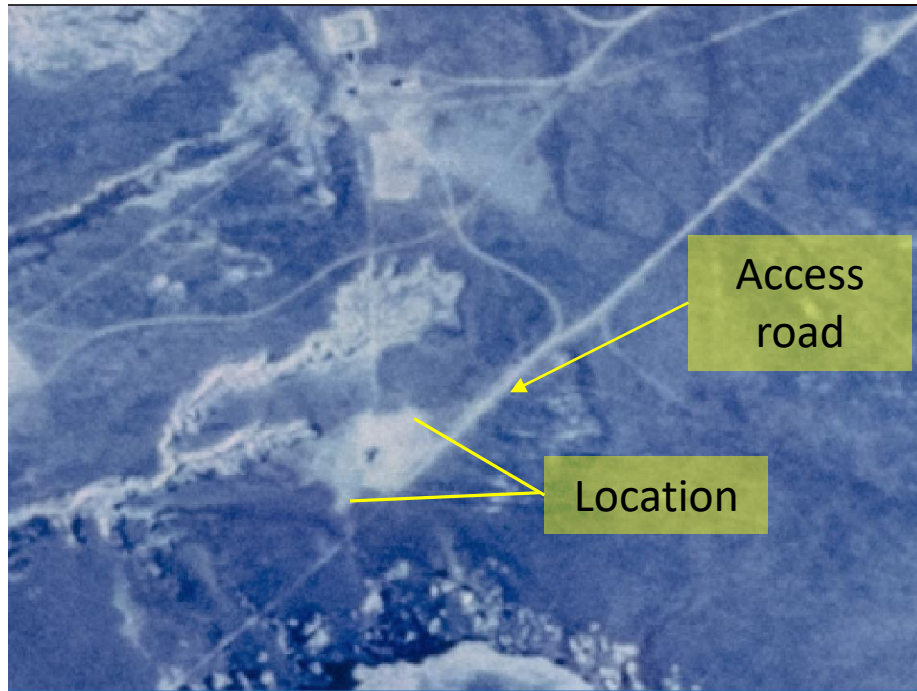




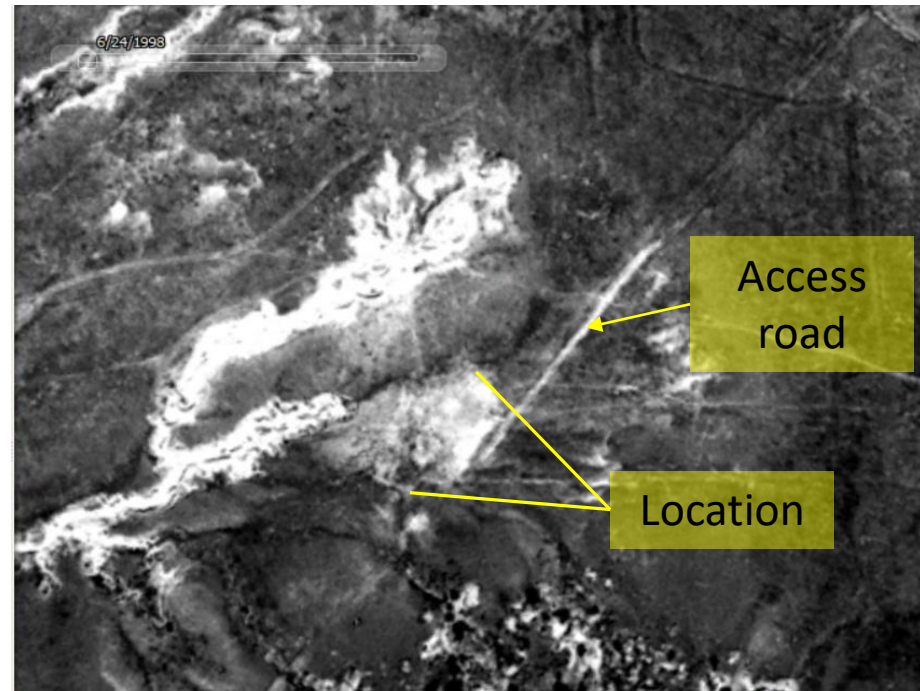
**Photo 11:** Photo taken from the northeast end of the location, facing south. Photo shows areas of the location where desirable perennial vegetation has failed to establish and stormwater erosion is causing degradation. These concerns appear to have been documented in previous inspections.



**Photo 12:** Photo taken from the access road, north of the location, facing south. Photo shows access road does not appear to have been adequately contoured and stabilized. Access road has acted as a channel for stormwater, allowing flows to concentrate and cause stormwater erosion degradation and incising to occur on both the access road and location.

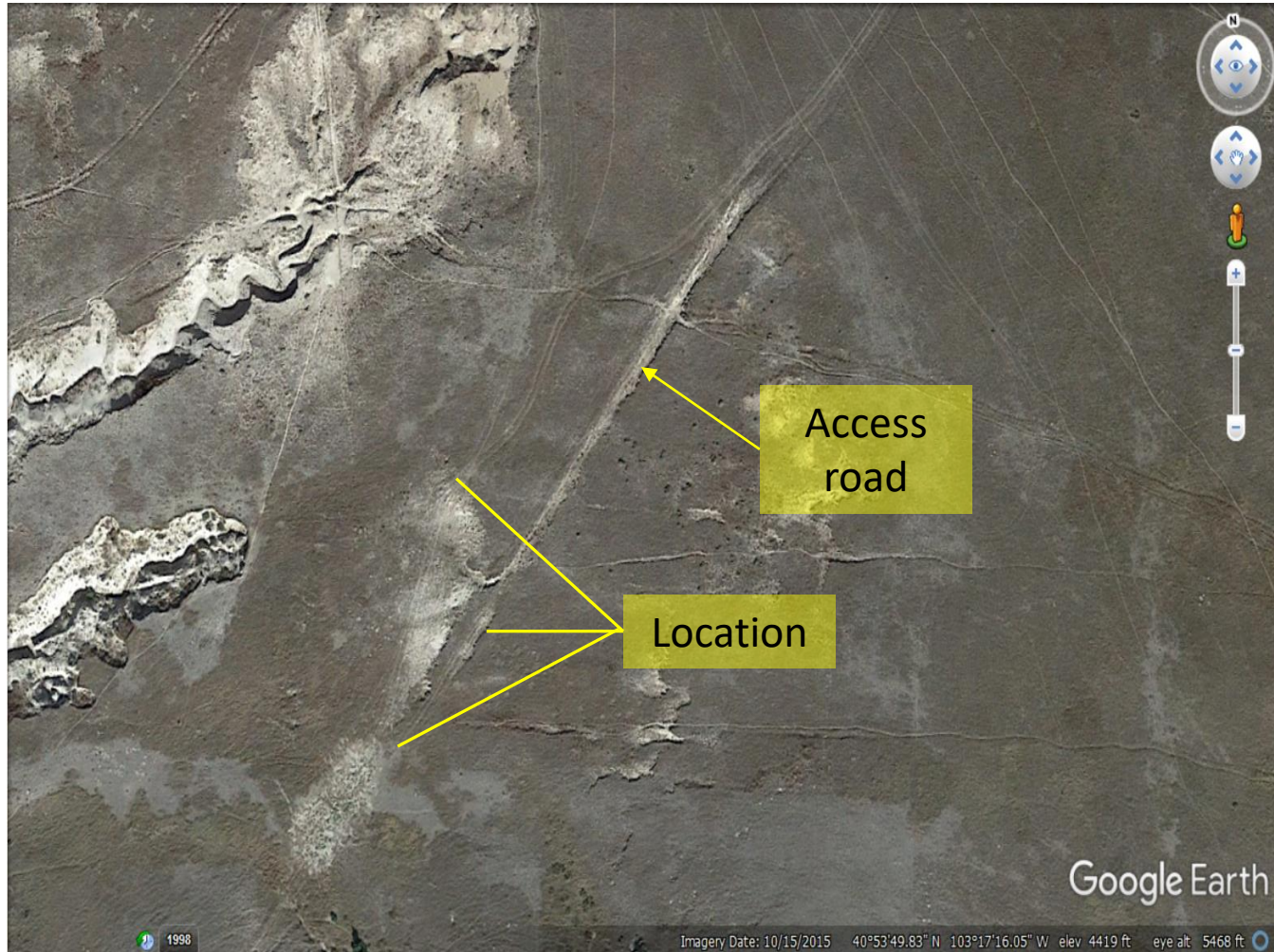


**Photo 13:** 1985 Aerial imagery. Well was PA in 1987. Photo shows the active location and access road



**Photo 14:** 1998 aerial imagery. PA in 1987. Photo shows location and access road remains evident 11 post plugging and abandonment.





**Photo 15:** Current available aerial imager (2015). Photo shows access road and well location.