



Kerr-McGee Oil & Gas Onshore LP

A subsidiary of Anadarko Petroleum Corporation

1099 18th Street
Denver, CO 80202
720-929-6000

March 7, 2018

Matt Lepore
Director, Colorado Oil and Gas Conservation Commission
Department of Natural Resources
The Chancery Building
1120 Lincoln Street, Suite 801
Denver, CO 80203

Re: **30 Day Certification Letter - 318A.e**
ENGLISH FARMS 8-13HZ (Doc No. 401496785)
Township 1 North, Range 65 West
Section 8: SWSE
Unit Acreage: 440 Acres
Unit Spacing: 01N-65W SEC 8: SWSE;
01N-65W SEC 17: W2E2;
01N-65W SEC 20: W2E2;
01N-65W SEC 29: W2NE
Weld County, Colorado

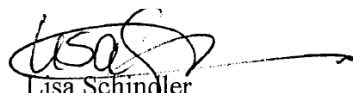
Dear Director Lepore:

Kerr McGee Oil and Gas Onshore LP ("KMG") hereby certifies that KMG owns one hundred percent (100%) of the leasehold interest in the mineral rights in the proposed spacing unit. KMG hereby respectfully requests approval of this boundary well.

If you have any questions or issues regarding this permit, please contact me at (720) 929-3091.

Sincerely,

Kerr-McGee Oil and Gas Onshore LP

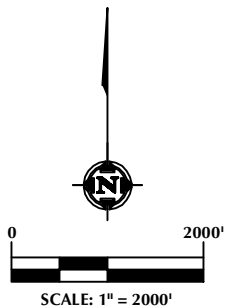
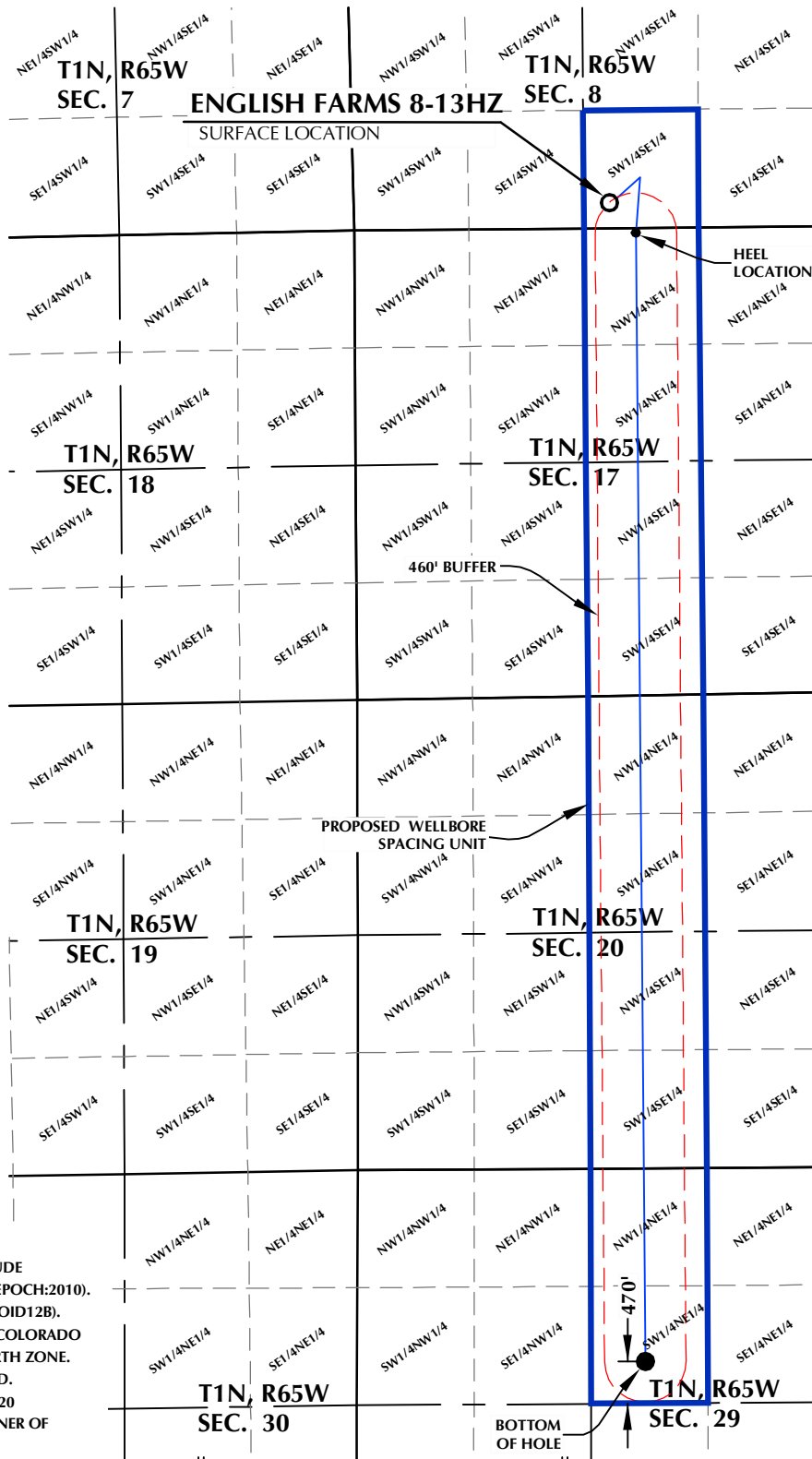

Lisa Schindler
Sr. Regulatory Analyst

Enclosure

DISTANCE FROM COMPLETED
PORTION OF WELLBORE TO
NEAREST UNIT BOUNDARY= 470'

ENGLISH FARMS 8-13HZ WELLBORE SPACING UNIT

SURFACE LOCATION: NAD 83
GROUND ELEVATION= 4944.7'
LATITUDE= 40.059521°
LONGITUDE= -104.686695°
LATITUDE= 40°03'34.277"
LONGITUDE= -104°41'12.101"
HEEL LOCATION: NAD 83
LATITUDE= 40.058614°
LONGITUDE= -104.685674°
LATITUDE= 40°03'31.012"
LONGITUDE= -104°41'08.428"
BOTTOM HOLE LOCATION: NAD 83
LATITUDE= 40.023637°
LONGITUDE= -104.685704°
LATITUDE= 40°01'25.093"
LONGITUDE= -104°41'08.534"



NOTES:

1. DRAWING LATITUDE AND LONGITUDE COORDINATES ARE NAD 83 (2011)(EPOCH:2010).
2. ELEVATION BASED ON NAVD88 (GEOID12B).
3. BASIS OF BEARING DERIVED FROM COLORADO COORDINATE SYSTEM OF 1983 NORTH ZONE.
4. ALL MEASURED DISTANCES ARE GRID. COMBINED SCALE FACTOR: .99972920 CALCULATED FROM THE S. 1/4 CORNER OF SECTION 8, T1N, R65W.

WELL PAD - ENGLISH FARMS 8-10HZ

ENGLISH FARMS 8-13HZ
WELLBORE SPACING UNIT
280' FSL & 2297' FEL SWSE (SURFACE)
LOCATED IN SECTION 8
50' FNL & 2010' FEL NWNE (HEEL)
LOCATED IN SECTION 17
2181' FNL & 2025' FEL SWNE (BOTTOM)
LOCATED IN SECTION 29
T1N, R65W, 6TH P.M.
WELD COUNTY, COLORADO

**Kerr-McGee Oil &
Gas Onshore L.P.**
1099 18th Street
Denver, Colorado 80202



CONSULTING, LLC

SHERIDAN OFFICE
1095 Saberton Avenue
Sheridan, Wyoming 82801
Phone 307-674-0609

LOVELAND OFFICE
1635 Foxtrail Drive, Suite 204
Loveland, Colorado 80538
Phone 970-776-4331

DRAFTED BY:	LMO	CHECKED BY:	RKF
DATE DRAFTED:	11/21/17	DATE SURVEYED:	7/24/17
REVISED:		FILE NAME:	17-119