

Weld County, Colorado

Section 06-T07N-R64W

Almont 5-03-01L

plan1

Section Details

Sec	MD	Inc	Azi	TVD	+N/-S	+E/-W	Dleg	VSec	Annotation
1	0.00	0.00	0.00	0.00	0.00	0.00	0.00	0.00	
2	3000.00	0.00	0.00	3000.00	0.00	0.00	0.00	0.00	KOP Begin 1°/100' build
3	3388.40	3.88	85.52	3388.10	1.03	13.12	1.00	13.13	Begin 3.88° tangent
4	6499.21	3.88	85.52	6491.76	17.49	223.19	0.00	223.36	Begin 10°/100' build/turn
5	7360.46	90.00	89.51	7026.00	24.86	794.80	10.00	795.01	Begin 90.00° lateral
6	17018.25	90.00	89.51	7026.00	106.66	10452.24	0.00	10452.79	PBHL/TD 17018.25 MD/7026.00 TVD

DESIGN TARGET DETAILS

Name	TVD	+N/-S	+E/-W	Northing	Easting	Latitude	Longitude
Almont 5-03-01L LP 1157 FNL 470 FWL	7026.00	24.86	794.80	14747679.33	1756648.61	40.60596903	-104.58123690
Almont 5-03-01L PBHL 1157 FNL 470 FEL	7026.00	106.66	10452.24	14747806.76	1766305.54	40.60618755	-104.54644332

Almont 5-03-01L			
Surf loc: 1172 FNL 325 FEL Section 06-T08N-R64W			
NAD83 Colorado - HARN			
Universal Transverse Mercator (US Survey Feet)			
Zone 13N (108 W to 102 W)			
RKB=5001+24 @ 5025.00ft			
Northing	Easting	Latitude	Longitude
14747650.72	1755853.94	40.60590082	-104.58410037

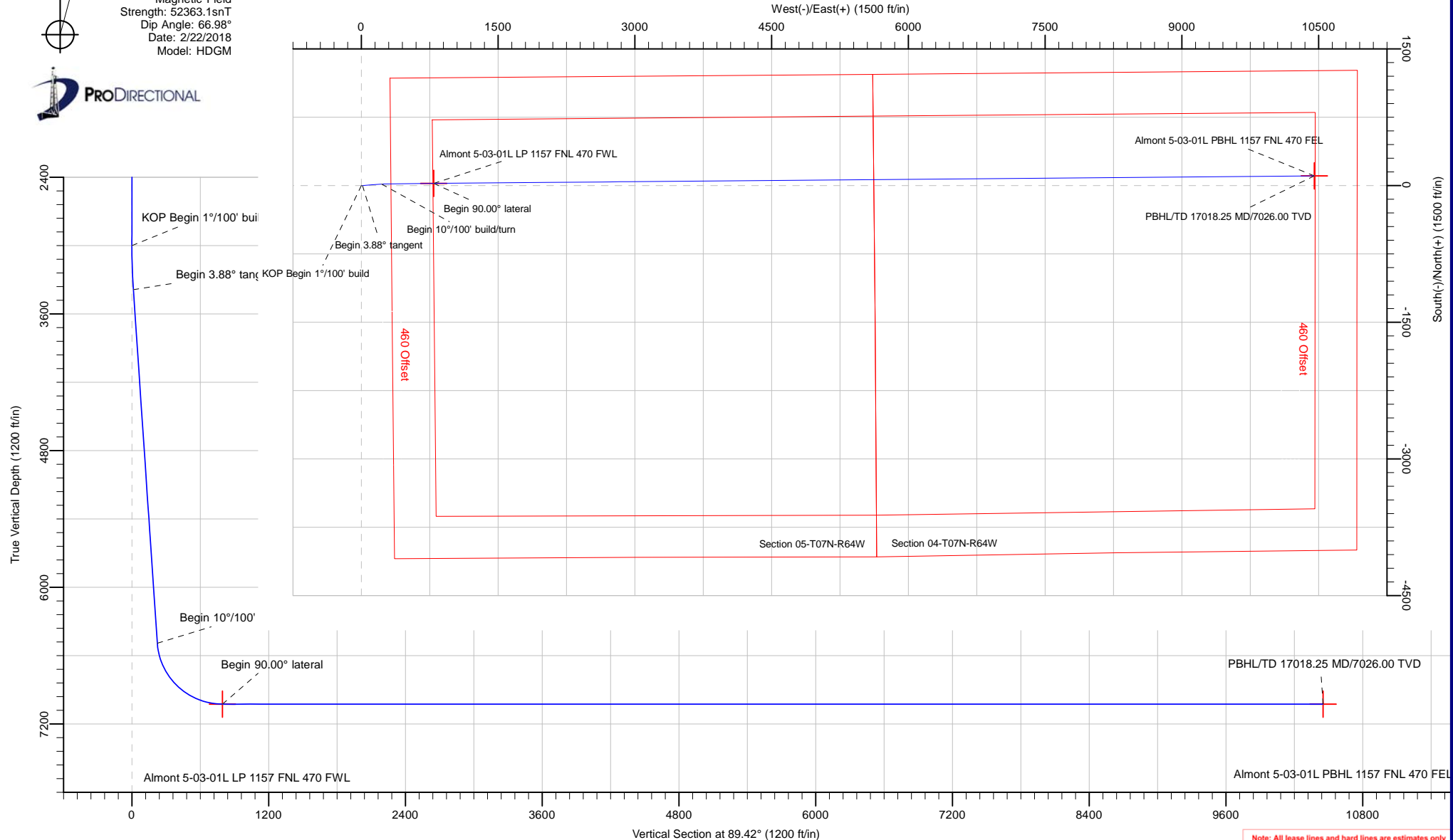


Azimuths to True North
Magnetic North: 8.00°

Magnetic Field
Strength: 52363.1snT
Dip Angle: 66.98°
Date: 2/22/2018
Model: HDGM

Azimuth Corrections:

To convert a Magnetic Direction to a True Direction, Add 8.00° East



Note: All lease lines and hard lines are estimates only and are subject to customers approval.

Database:	DB_Jul2216dt_v14	Local Co-ordinate Reference:	Well Almont 5-03-01L
Company:	Confluence Resources	TVD Reference:	RKB=5001+24 @ 5025.00ft
Project:	Weld County, Colorado	MD Reference:	RKB=5001+24 @ 5025.00ft
Site:	Section 06-T07N-R64W	North Reference:	True
Well:	Almont 5-03-01L	Survey Calculation Method:	Minimum Curvature
Wellbore:	Original Hole		
Design:	plan1		

Project	Weld County, Colorado		
Map System:	Universal Transverse Mercator (US Survey Feet)	System Datum:	Mean Sea Level
Geo Datum:	NAD83 Colorado - HARN		
Map Zone:	Zone 13N (108 W to 102 W)		

Site		Section 06-T07N-R64W			
Site Position:		Northing:	14,746,184.54 usft	Latitude:	40.60187654
From:	Map	Easting:	1,755,730.03 usft	Longitude:	-104.58457171
Position Uncertainty:	0.00 ft	Slot Radius:	13-3/16 "	Grid Convergence:	0.27 °

Well	Almont 5-03-01L, Surf loc: 1172 FNL 325 FEL Section 06-T08N-R64W					
Well Position	+N/-S	1,465.58 ft	Northing:	14,747,650.72 usft	Latitude:	40.60590082
	+E/-W	130.83 ft	Easting:	1,755,853.94 usft	Longitude:	-104.58410037
Position Uncertainty		0.00 ft	Wellhead Elevation:		Ground Level:	5,001.00 ft

Wellbore	Original Hole				
Magnetics	Model Name	Sample Date	Declination (°)	Dip Angle (°)	Field Strength (nT)
	HDGM	2/22/2018	8.00	66.98	52,363.10000000

Design	plan1			
Audit Notes:				
Version:	Phase:	PLAN	Tie On Depth:	0.00
Vertical Section:	Depth From (TVD) (ft)	+N/-S (ft)	+E/-W (ft)	Direction (°)
	0.00	0.00	0.00	89.42

Plan Survey Tool Program	Date	2/22/2018		
Depth From (ft)	Depth To (ft)	Survey (Wellbore)	Tool Name	Remarks
1	0.00	17,018.25	plan1 (Original Hole)	

Plan Sections										
Measured Depth (ft)	Inclination (°)	Azimuth (°)	Vertical Depth (ft)	+N/-S (ft)	+E/-W (ft)	Dogleg Rate (°/100ft)	Build Rate (°/100ft)	Turn Rate (°/100ft)	TFO (°)	Target
0.00	0.00	0.00	0.00	0.00	0.00	0.00	0.00	0.00	0.00	
3,000.00	0.00	0.00	3,000.00	0.00	0.00	0.00	0.00	0.00	0.00	
3,388.40	3.88	85.52	3,388.10	1.03	13.12	1.00	1.00	0.00	85.52	
6,499.21	3.88	85.52	6,491.76	17.49	223.19	0.00	0.00	0.00	0.00	
7,360.46	90.00	89.51	7,026.00	24.86	794.80	10.00	10.00	0.46	4.00	Almont 5-03-01L LP 1
17,018.25	90.00	89.51	7,026.00	106.66	10,452.24	0.00	0.00	0.00	0.00	Almont 5-03-01L PBH

Database:	DB_Jul2216dt_v14	Local Co-ordinate Reference:	Well Almont 5-03-01L
Company:	Confluence Resources	TVD Reference:	RKB=5001+24 @ 5025.00ft
Project:	Weld County, Colorado	MD Reference:	RKB=5001+24 @ 5025.00ft
Site:	Section 06-T07N-R64W	North Reference:	True
Well:	Almont 5-03-01L	Survey Calculation Method:	Minimum Curvature
Wellbore:	Original Hole		
Design:	plan1		

Planned Survey									
Measured Depth (ft)	Inclination (°)	Azimuth (°)	Vertical Depth (ft)	+N/-S (ft)	+E/-W (ft)	Vertical Section (ft)	Dogleg Rate (°/100ft)	Build Rate (°/100ft)	Turn Rate (°/100ft)
0.00	0.00	0.00	0.00	0.00	0.00	0.00	0.00	0.00	0.00
100.00	0.00	0.00	100.00	0.00	0.00	0.00	0.00	0.00	0.00
200.00	0.00	0.00	200.00	0.00	0.00	0.00	0.00	0.00	0.00
300.00	0.00	0.00	300.00	0.00	0.00	0.00	0.00	0.00	0.00
400.00	0.00	0.00	400.00	0.00	0.00	0.00	0.00	0.00	0.00
500.00	0.00	0.00	500.00	0.00	0.00	0.00	0.00	0.00	0.00
600.00	0.00	0.00	600.00	0.00	0.00	0.00	0.00	0.00	0.00
700.00	0.00	0.00	700.00	0.00	0.00	0.00	0.00	0.00	0.00
800.00	0.00	0.00	800.00	0.00	0.00	0.00	0.00	0.00	0.00
900.00	0.00	0.00	900.00	0.00	0.00	0.00	0.00	0.00	0.00
1,000.00	0.00	0.00	1,000.00	0.00	0.00	0.00	0.00	0.00	0.00
1,100.00	0.00	0.00	1,100.00	0.00	0.00	0.00	0.00	0.00	0.00
1,200.00	0.00	0.00	1,200.00	0.00	0.00	0.00	0.00	0.00	0.00
1,300.00	0.00	0.00	1,300.00	0.00	0.00	0.00	0.00	0.00	0.00
1,400.00	0.00	0.00	1,400.00	0.00	0.00	0.00	0.00	0.00	0.00
1,500.00	0.00	0.00	1,500.00	0.00	0.00	0.00	0.00	0.00	0.00
1,600.00	0.00	0.00	1,600.00	0.00	0.00	0.00	0.00	0.00	0.00
1,700.00	0.00	0.00	1,700.00	0.00	0.00	0.00	0.00	0.00	0.00
1,800.00	0.00	0.00	1,800.00	0.00	0.00	0.00	0.00	0.00	0.00
1,900.00	0.00	0.00	1,900.00	0.00	0.00	0.00	0.00	0.00	0.00
2,000.00	0.00	0.00	2,000.00	0.00	0.00	0.00	0.00	0.00	0.00
2,100.00	0.00	0.00	2,100.00	0.00	0.00	0.00	0.00	0.00	0.00
2,200.00	0.00	0.00	2,200.00	0.00	0.00	0.00	0.00	0.00	0.00
2,300.00	0.00	0.00	2,300.00	0.00	0.00	0.00	0.00	0.00	0.00
2,400.00	0.00	0.00	2,400.00	0.00	0.00	0.00	0.00	0.00	0.00
2,500.00	0.00	0.00	2,500.00	0.00	0.00	0.00	0.00	0.00	0.00
2,600.00	0.00	0.00	2,600.00	0.00	0.00	0.00	0.00	0.00	0.00
2,700.00	0.00	0.00	2,700.00	0.00	0.00	0.00	0.00	0.00	0.00
2,800.00	0.00	0.00	2,800.00	0.00	0.00	0.00	0.00	0.00	0.00
2,900.00	0.00	0.00	2,900.00	0.00	0.00	0.00	0.00	0.00	0.00
3,000.00	0.00	0.00	3,000.00	0.00	0.00	0.00	0.00	0.00	0.00
KOP Begin 1°/100' build									
3,100.00	1.00	85.52	3,099.99	0.07	0.87	0.87	1.00	1.00	0.00
3,200.00	2.00	85.52	3,199.96	0.27	3.48	3.48	1.00	1.00	0.00
3,300.00	3.00	85.52	3,299.86	0.61	7.83	7.83	1.00	1.00	0.00
3,388.40	3.88	85.52	3,388.10	1.03	13.12	13.13	1.00	1.00	0.00
Begin 3.88° tangent									
3,400.00	3.88	85.52	3,399.68	1.09	13.90	13.91	0.00	0.00	0.00
3,500.00	3.88	85.52	3,499.45	1.62	20.66	20.67	0.00	0.00	0.00
3,600.00	3.88	85.52	3,599.22	2.15	27.41	27.43	0.00	0.00	0.00
3,700.00	3.88	85.52	3,698.99	2.68	34.16	34.19	0.00	0.00	0.00
3,800.00	3.88	85.52	3,798.76	3.21	40.91	40.95	0.00	0.00	0.00
3,900.00	3.88	85.52	3,898.53	3.73	47.67	47.70	0.00	0.00	0.00
4,000.00	3.88	85.52	3,998.30	4.26	54.42	54.46	0.00	0.00	0.00
4,100.00	3.88	85.52	4,098.07	4.79	61.17	61.22	0.00	0.00	0.00
4,200.00	3.88	85.52	4,197.84	5.32	67.93	67.98	0.00	0.00	0.00
4,300.00	3.88	85.52	4,297.61	5.85	74.68	74.74	0.00	0.00	0.00
4,400.00	3.88	85.52	4,397.38	6.38	81.43	81.49	0.00	0.00	0.00
4,500.00	3.88	85.52	4,497.15	6.91	88.19	88.25	0.00	0.00	0.00
4,600.00	3.88	85.52	4,596.92	7.44	94.94	95.01	0.00	0.00	0.00
4,700.00	3.88	85.52	4,696.69	7.97	101.69	101.77	0.00	0.00	0.00
4,800.00	3.88	85.52	4,796.46	8.50	108.44	108.53	0.00	0.00	0.00
4,900.00	3.88	85.52	4,896.23	9.03	115.20	115.28	0.00	0.00	0.00

Database:	DB_Jul2216dt_v14	Local Co-ordinate Reference:	Well Almont 5-03-01L
Company:	Confluence Resources	TVD Reference:	RKB=5001+24 @ 5025.00ft
Project:	Weld County, Colorado	MD Reference:	RKB=5001+24 @ 5025.00ft
Site:	Section 06-T07N-R64W	North Reference:	True
Well:	Almont 5-03-01L	Survey Calculation Method:	Minimum Curvature
Wellbore:	Original Hole		
Design:	plan1		

Planned Survey									
Measured Depth (ft)	Inclination (°)	Azimuth (°)	Vertical Depth (ft)	+N/-S (ft)	+E/-W (ft)	Vertical Section (ft)	Dogleg Rate (°/100ft)	Build Rate (°/100ft)	Turn Rate (°/100ft)
5,000.00	3.88	85.52	4,996.00	9.55	121.95	122.04	0.00	0.00	0.00
5,100.00	3.88	85.52	5,095.77	10.08	128.70	128.80	0.00	0.00	0.00
5,200.00	3.88	85.52	5,195.54	10.61	135.46	135.56	0.00	0.00	0.00
5,300.00	3.88	85.52	5,295.31	11.14	142.21	142.32	0.00	0.00	0.00
5,400.00	3.88	85.52	5,395.08	11.67	148.96	149.07	0.00	0.00	0.00
5,500.00	3.88	85.52	5,494.85	12.20	155.72	155.83	0.00	0.00	0.00
5,600.00	3.88	85.52	5,594.62	12.73	162.47	162.59	0.00	0.00	0.00
5,700.00	3.88	85.52	5,694.39	13.26	169.22	169.35	0.00	0.00	0.00
5,800.00	3.88	85.52	5,794.16	13.79	175.97	176.11	0.00	0.00	0.00
5,900.00	3.88	85.52	5,893.93	14.32	182.73	182.86	0.00	0.00	0.00
6,000.00	3.88	85.52	5,993.70	14.85	189.48	189.62	0.00	0.00	0.00
6,100.00	3.88	85.52	6,093.47	15.37	196.23	196.38	0.00	0.00	0.00
6,200.00	3.88	85.52	6,193.25	15.90	202.99	203.14	0.00	0.00	0.00
6,300.00	3.88	85.52	6,293.02	16.43	209.74	209.90	0.00	0.00	0.00
6,400.00	3.88	85.52	6,392.79	16.96	216.49	216.65	0.00	0.00	0.00
6,499.21	3.88	85.52	6,491.76	17.49	223.19	223.36	0.00	0.00	0.00
Begin 10°/100' build/turn									
6,500.00	3.96	85.60	6,492.56	17.49	223.25	223.41	10.00	9.98	10.10
6,600.00	13.96	88.42	6,591.21	18.09	238.79	238.96	10.00	9.99	2.82
6,700.00	23.96	88.90	6,685.67	18.81	271.22	271.40	10.00	10.00	0.48
6,800.00	33.95	89.11	6,773.06	19.63	319.56	319.75	10.00	10.00	0.21
6,900.00	43.95	89.23	6,850.72	20.53	382.35	382.54	10.00	10.00	0.12
7,000.00	53.95	89.32	6,916.31	21.48	457.67	457.86	10.00	10.00	0.08
7,100.00	63.95	89.38	6,967.81	22.45	543.23	543.43	10.00	10.00	0.06
7,200.00	73.95	89.44	7,003.68	23.41	636.43	636.64	10.00	10.00	0.05
7,300.00	83.95	89.49	7,022.81	24.33	734.45	734.66	10.00	10.00	0.05
7,360.46	90.00	89.51	7,026.00	24.86	794.80	795.01	10.00	10.00	0.05
Begin 90.00° lateral									
7,400.00	90.00	89.51	7,026.00	25.19	834.34	834.55	0.00	0.00	0.00
7,500.00	90.00	89.51	7,026.00	26.04	934.33	934.55	0.00	0.00	0.00
7,600.00	90.00	89.51	7,026.00	26.88	1,034.33	1,034.55	0.00	0.00	0.00
7,700.00	90.00	89.51	7,026.00	27.73	1,134.32	1,134.55	0.00	0.00	0.00
7,800.00	90.00	89.51	7,026.00	28.58	1,234.32	1,234.55	0.00	0.00	0.00
7,900.00	90.00	89.51	7,026.00	29.43	1,334.32	1,334.55	0.00	0.00	0.00
8,000.00	90.00	89.51	7,026.00	30.27	1,434.31	1,434.55	0.00	0.00	0.00
8,100.00	90.00	89.51	7,026.00	31.12	1,534.31	1,534.55	0.00	0.00	0.00
8,200.00	90.00	89.51	7,026.00	31.97	1,634.31	1,634.55	0.00	0.00	0.00
8,300.00	90.00	89.51	7,026.00	32.81	1,734.30	1,734.55	0.00	0.00	0.00
8,400.00	90.00	89.51	7,026.00	33.66	1,834.30	1,834.55	0.00	0.00	0.00
8,500.00	90.00	89.51	7,026.00	34.51	1,934.30	1,934.55	0.00	0.00	0.00
8,600.00	90.00	89.51	7,026.00	35.35	2,034.29	2,034.55	0.00	0.00	0.00
8,700.00	90.00	89.51	7,026.00	36.20	2,134.29	2,134.55	0.00	0.00	0.00
8,800.00	90.00	89.51	7,026.00	37.05	2,234.29	2,234.55	0.00	0.00	0.00
8,900.00	90.00	89.51	7,026.00	37.90	2,334.28	2,334.55	0.00	0.00	0.00
9,000.00	90.00	89.51	7,026.00	38.74	2,434.28	2,434.55	0.00	0.00	0.00
9,100.00	90.00	89.51	7,026.00	39.59	2,534.27	2,534.55	0.00	0.00	0.00
9,200.00	90.00	89.51	7,026.00	40.44	2,634.27	2,634.55	0.00	0.00	0.00
9,300.00	90.00	89.51	7,026.00	41.28	2,734.27	2,734.55	0.00	0.00	0.00
9,400.00	90.00	89.51	7,026.00	42.13	2,834.26	2,834.55	0.00	0.00	0.00
9,500.00	90.00	89.51	7,026.00	42.98	2,934.26	2,934.55	0.00	0.00	0.00
9,600.00	90.00	89.51	7,026.00	43.82	3,034.26	3,034.55	0.00	0.00	0.00
9,700.00	90.00	89.51	7,026.00	44.67	3,134.25	3,134.55	0.00	0.00	0.00
9,800.00	90.00	89.51	7,026.00	45.52	3,234.25	3,234.55	0.00	0.00	0.00
9,900.00	90.00	89.51	7,026.00	46.37	3,334.25	3,334.55	0.00	0.00	0.00

Database:	DB_Jul2216dt_v14	Local Co-ordinate Reference:	Well Almont 5-03-01L
Company:	Confluence Resources	TVD Reference:	RKB=5001+24 @ 5025.00ft
Project:	Weld County, Colorado	MD Reference:	RKB=5001+24 @ 5025.00ft
Site:	Section 06-T07N-R64W	North Reference:	True
Well:	Almont 5-03-01L	Survey Calculation Method:	Minimum Curvature
Wellbore:	Original Hole		
Design:	plan1		

Planned Survey									
Measured Depth (ft)	Inclination (°)	Azimuth (°)	Vertical Depth (ft)	+N/-S (ft)	+E/-W (ft)	Vertical Section (ft)	Dogleg Rate (°/100ft)	Build Rate (°/100ft)	Turn Rate (°/100ft)
10,000.00	90.00	89.51	7,026.00	47.21	3,434.24	3,434.55	0.00	0.00	0.00
10,100.00	90.00	89.51	7,026.00	48.06	3,534.24	3,534.55	0.00	0.00	0.00
10,200.00	90.00	89.51	7,026.00	48.91	3,634.24	3,634.55	0.00	0.00	0.00
10,300.00	90.00	89.51	7,026.00	49.75	3,734.23	3,734.54	0.00	0.00	0.00
10,400.00	90.00	89.51	7,026.00	50.60	3,834.23	3,834.54	0.00	0.00	0.00
10,500.00	90.00	89.51	7,026.00	51.45	3,934.22	3,934.54	0.00	0.00	0.00
10,600.00	90.00	89.51	7,026.00	52.29	4,034.22	4,034.54	0.00	0.00	0.00
10,700.00	90.00	89.51	7,026.00	53.14	4,134.22	4,134.54	0.00	0.00	0.00
10,800.00	90.00	89.51	7,026.00	53.99	4,234.21	4,234.54	0.00	0.00	0.00
10,900.00	90.00	89.51	7,026.00	54.84	4,334.21	4,334.54	0.00	0.00	0.00
11,000.00	90.00	89.51	7,026.00	55.68	4,434.21	4,434.54	0.00	0.00	0.00
11,100.00	90.00	89.51	7,026.00	56.53	4,534.20	4,534.54	0.00	0.00	0.00
11,200.00	90.00	89.51	7,026.00	57.38	4,634.20	4,634.54	0.00	0.00	0.00
11,300.00	90.00	89.51	7,026.00	58.22	4,734.20	4,734.54	0.00	0.00	0.00
11,400.00	90.00	89.51	7,026.00	59.07	4,834.19	4,834.54	0.00	0.00	0.00
11,500.00	90.00	89.51	7,026.00	59.92	4,934.19	4,934.54	0.00	0.00	0.00
11,600.00	90.00	89.51	7,026.00	60.76	5,034.19	5,034.54	0.00	0.00	0.00
11,700.00	90.00	89.51	7,026.00	61.61	5,134.18	5,134.54	0.00	0.00	0.00
11,800.00	90.00	89.51	7,026.00	62.46	5,234.18	5,234.54	0.00	0.00	0.00
11,900.00	90.00	89.51	7,026.00	63.31	5,334.17	5,334.54	0.00	0.00	0.00
12,000.00	90.00	89.51	7,026.00	64.15	5,434.17	5,434.54	0.00	0.00	0.00
12,100.00	90.00	89.51	7,026.00	65.00	5,534.17	5,534.54	0.00	0.00	0.00
12,200.00	90.00	89.51	7,026.00	65.85	5,634.16	5,634.54	0.00	0.00	0.00
12,300.00	90.00	89.51	7,026.00	66.69	5,734.16	5,734.54	0.00	0.00	0.00
12,400.00	90.00	89.51	7,026.00	67.54	5,834.16	5,834.54	0.00	0.00	0.00
12,500.00	90.00	89.51	7,026.00	68.39	5,934.15	5,934.54	0.00	0.00	0.00
12,600.00	90.00	89.51	7,026.00	69.23	6,034.15	6,034.54	0.00	0.00	0.00
12,700.00	90.00	89.51	7,026.00	70.08	6,134.15	6,134.54	0.00	0.00	0.00
12,800.00	90.00	89.51	7,026.00	70.93	6,234.14	6,234.54	0.00	0.00	0.00
12,900.00	90.00	89.51	7,026.00	71.78	6,334.14	6,334.54	0.00	0.00	0.00
13,000.00	90.00	89.51	7,026.00	72.62	6,434.13	6,434.54	0.00	0.00	0.00
13,100.00	90.00	89.51	7,026.00	73.47	6,534.13	6,534.54	0.00	0.00	0.00
13,200.00	90.00	89.51	7,026.00	74.32	6,634.13	6,634.54	0.00	0.00	0.00
13,300.00	90.00	89.51	7,026.00	75.16	6,734.12	6,734.54	0.00	0.00	0.00
13,400.00	90.00	89.51	7,026.00	76.01	6,834.12	6,834.54	0.00	0.00	0.00
13,500.00	90.00	89.51	7,026.00	76.86	6,934.12	6,934.54	0.00	0.00	0.00
13,600.00	90.00	89.51	7,026.00	77.70	7,034.11	7,034.54	0.00	0.00	0.00
13,700.00	90.00	89.51	7,026.00	78.55	7,134.11	7,134.54	0.00	0.00	0.00
13,800.00	90.00	89.51	7,026.00	79.40	7,234.11	7,234.54	0.00	0.00	0.00
13,900.00	90.00	89.51	7,026.00	80.25	7,334.10	7,334.54	0.00	0.00	0.00
14,000.00	90.00	89.51	7,026.00	81.09	7,434.10	7,434.54	0.00	0.00	0.00
14,100.00	90.00	89.51	7,026.00	81.94	7,534.10	7,534.54	0.00	0.00	0.00
14,200.00	90.00	89.51	7,026.00	82.79	7,634.09	7,634.54	0.00	0.00	0.00
14,300.00	90.00	89.51	7,026.00	83.63	7,734.09	7,734.54	0.00	0.00	0.00
14,400.00	90.00	89.51	7,026.00	84.48	7,834.08	7,834.54	0.00	0.00	0.00
14,500.00	90.00	89.51	7,026.00	85.33	7,934.08	7,934.54	0.00	0.00	0.00
14,600.00	90.00	89.51	7,026.00	86.17	8,034.08	8,034.54	0.00	0.00	0.00
14,700.00	90.00	89.51	7,026.00	87.02	8,134.07	8,134.54	0.00	0.00	0.00
14,800.00	90.00	89.51	7,026.00	87.87	8,234.07	8,234.54	0.00	0.00	0.00
14,900.00	90.00	89.51	7,026.00	88.72	8,334.07	8,334.54	0.00	0.00	0.00
15,000.00	90.00	89.51	7,026.00	89.56	8,434.06	8,434.54	0.00	0.00	0.00
15,100.00	90.00	89.51	7,026.00	90.41	8,534.06	8,534.54	0.00	0.00	0.00
15,200.00	90.00	89.51	7,026.00	91.26	8,634.06	8,634.54	0.00	0.00	0.00
15,300.00	90.00	89.51	7,026.00	92.10	8,734.05	8,734.54	0.00	0.00	0.00

Database:	DB_Jul2216dt_v14	Local Co-ordinate Reference:	Well Almont 5-03-01L
Company:	Confluence Resources	TVD Reference:	RKB=5001+24 @ 5025.00ft
Project:	Weld County, Colorado	MD Reference:	RKB=5001+24 @ 5025.00ft
Site:	Section 06-T07N-R64W	North Reference:	True
Well:	Almont 5-03-01L	Survey Calculation Method:	Minimum Curvature
Wellbore:	Original Hole		
Design:	plan1		

Planned Survey										
Measured Depth (ft)	Inclination (°)	Azimuth (°)	Vertical Depth (ft)	+N/-S (ft)	+E/-W (ft)	Vertical Section (ft)	Dogleg Rate (°/100ft)	Build Rate (°/100ft)	Turn Rate (°/100ft)	
15,400.00	90.00	89.51	7,026.00	92.95	8,834.05	8,834.54	0.00	0.00	0.00	
15,500.00	90.00	89.51	7,026.00	93.80	8,934.05	8,934.54	0.00	0.00	0.00	
15,600.00	90.00	89.51	7,026.00	94.64	9,034.04	9,034.54	0.00	0.00	0.00	
15,700.00	90.00	89.51	7,026.00	95.49	9,134.04	9,134.54	0.00	0.00	0.00	
15,800.00	90.00	89.51	7,026.00	96.34	9,234.03	9,234.54	0.00	0.00	0.00	
15,900.00	90.00	89.51	7,026.00	97.19	9,334.03	9,334.54	0.00	0.00	0.00	
16,000.00	90.00	89.51	7,026.00	98.03	9,434.03	9,434.54	0.00	0.00	0.00	
16,100.00	90.00	89.51	7,026.00	98.88	9,534.02	9,534.54	0.00	0.00	0.00	
16,200.00	90.00	89.51	7,026.00	99.73	9,634.02	9,634.54	0.00	0.00	0.00	
16,300.00	90.00	89.51	7,026.00	100.57	9,734.02	9,734.54	0.00	0.00	0.00	
16,400.00	90.00	89.51	7,026.00	101.42	9,834.01	9,834.54	0.00	0.00	0.00	
16,500.00	90.00	89.51	7,026.00	102.27	9,934.01	9,934.54	0.00	0.00	0.00	
16,600.00	90.00	89.51	7,026.00	103.11	10,034.01	10,034.54	0.00	0.00	0.00	
16,700.00	90.00	89.51	7,026.00	103.96	10,134.00	10,134.54	0.00	0.00	0.00	
16,800.00	90.00	89.51	7,026.00	104.81	10,234.00	10,234.54	0.00	0.00	0.00	
16,900.00	90.00	89.51	7,026.00	105.66	10,334.00	10,334.54	0.00	0.00	0.00	
17,000.00	90.00	89.51	7,026.00	106.50	10,433.99	10,434.54	0.00	0.00	0.00	
17,018.25	90.00	89.51	7,026.00	106.66	10,452.24	10,452.79	0.00	0.00	0.00	
PBHL/TD 17018.25 MD/7026.00 TVD										

Design Targets									
Target Name	Dip Angle (°)	Dip Dir. (°)	TVD (ft)	+N/-S (ft)	+E/-W (ft)	Northing (usft)	Easting (usft)	Latitude	Longitude
- hit/miss target									
- Shape									
Almont 5-03-01L PBHL 1	0.00	0.00	7,026.00	106.66	10,452.24	14,747,806.76	1,766,305.54	40.60618755	-104.54644332
- plan hits target center									
- Point									
Almont 5-03-01L LP 115	0.00	0.00	7,026.00	24.86	794.80	14,747,679.33	1,756,648.61	40.60596903	-104.58123690
- plan hits target center									
- Point									

Plan Annotations				
Measured Depth (ft)	Vertical Depth (ft)	Local Coordinates		Comment
		+N/-S (ft)	+E/-W (ft)	
3,000.00	3,000.00	0.00	0.00	KOP Begin 1°/100' build
3,388.40	3,388.10	1.03	13.12	Begin 3.88° tangent
6,499.21	6,491.76	17.49	223.19	Begin 10°/100' build/turn
7,360.46	7,026.00	24.86	794.80	Begin 90.00° lateral
17,018.25	7,026.00	106.66	10,452.24	PBHL/TD 17018.25 MD/7026.00 TVD

Database:	DB_Jul2216dt_v14	Local Co-ordinate Reference:	Well Almont 5-03-01L
Company:	Confluence Resources	TVD Reference:	RKB=5001+24 @ 5025.00ft
Project:	Weld County, Colorado	MD Reference:	RKB=5001+24 @ 5025.00ft
Site:	Section 06-T07N-R64W	North Reference:	True
Well:	Almont 5-03-01L	Survey Calculation Method:	Minimum Curvature
Wellbore:	Original Hole		
Design:	plan1		

Project	Weld County, Colorado		
Map System:	Universal Transverse Mercator (US Survey Feet)	System Datum:	Mean Sea Level
Geo Datum:	NAD83 Colorado - HARN		
Map Zone:	Zone 13N (108 W to 102 W)		

Site		Section 06-T07N-R64W			
Site Position:		Northing:	14,746,184.54 usft	Latitude:	40.60187654
From:	Map	Easting:	1,755,730.03 usft	Longitude:	-104.58457171
Position Uncertainty:	0.00 ft	Slot Radius:	13-3/16 "	Grid Convergence:	0.27 °

Well	Almont 5-03-01L, Surf loc: 1172 FNL 325 FEL Section 06-T08N-R64W					
Well Position	+N/-S	0.00 ft	Northing:	14,747,650.72 usft	Latitude:	40.60590082
	+E/-W	0.00 ft	Easting:	1,755,853.94 usft	Longitude:	-104.58410037
Position Uncertainty		0.00 ft	Wellhead Elevation:		Ground Level:	5,001.00 ft

Wellbore	Original Hole				
Magnetics	Model Name	Sample Date	Declination (°)	Dip Angle (°)	Field Strength (nT)
	HDGM	2/22/2018	8.00	66.98	52,363.10000000

Design	plan1			
Audit Notes:				
Version:	Phase:	PLAN	Tie On Depth:	0.00
Vertical Section:	Depth From (TVD) (ft)	+N/-S (ft)	+E/-W (ft)	Direction (°)
	0.00	0.00	0.00	89.42

Plan Survey Tool Program	Date	2/22/2018		
Depth From (ft)	Depth To (ft)	Survey (Wellbore)	Tool Name	Remarks
1	0.00	17,018.25 plan1 (Original Hole)		

Plan Sections										
Measured Depth (ft)	Inclination (°)	Azimuth (°)	Vertical Depth (ft)	+N/-S (ft)	+E/-W (ft)	Dogleg Rate (°/100ft)	Build Rate (°/100ft)	Turn Rate (°/100ft)	TFO (°)	Target
0.00	0.00	0.00	0.00	0.00	0.00	0.00	0.00	0.00	0.00	
3,000.00	0.00	0.00	3,000.00	0.00	0.00	0.00	0.00	0.00	0.00	
3,388.40	3.88	85.52	3,388.10	1.03	13.12	1.00	1.00	0.00	85.52	
6,499.21	3.88	85.52	6,491.76	17.49	223.19	0.00	0.00	0.00	0.00	
7,360.46	90.00	89.51	7,026.00	24.86	794.80	10.00	10.00	0.46	4.00	Almont 5-03-01L LP 1
17,018.25	90.00	89.51	7,026.00	106.66	10,452.24	0.00	0.00	0.00	0.00	Almont 5-03-01L PBH

Database:	DB_Jul2216dt_v14	Local Co-ordinate Reference:	Well Almont 5-03-01L
Company:	Confluence Resources	TVD Reference:	RKB=5001+24 @ 5025.00ft
Project:	Weld County, Colorado	MD Reference:	RKB=5001+24 @ 5025.00ft
Site:	Section 06-T07N-R64W	North Reference:	True
Well:	Almont 5-03-01L	Survey Calculation Method:	Minimum Curvature
Wellbore:	Original Hole		
Design:	plan1		

Planned Survey									
Measured Depth (ft)	Inclination (°)	Azimuth (°)	Vertical Depth (ft)	+N/-S (ft)	+E/-W (ft)	Map Northing (usft)	Map Easting (usft)	Latitude	Longitude
0.00	0.00	0.00	0.00	0.00	0.00	14,747,650.72	1,755,853.94	40.60590082	-104.58410037
100.00	0.00	0.00	100.00	0.00	0.00	14,747,650.72	1,755,853.94	40.60590082	-104.58410037
200.00	0.00	0.00	200.00	0.00	0.00	14,747,650.72	1,755,853.94	40.60590082	-104.58410037
300.00	0.00	0.00	300.00	0.00	0.00	14,747,650.72	1,755,853.94	40.60590082	-104.58410037
400.00	0.00	0.00	400.00	0.00	0.00	14,747,650.72	1,755,853.94	40.60590082	-104.58410037
500.00	0.00	0.00	500.00	0.00	0.00	14,747,650.72	1,755,853.94	40.60590082	-104.58410037
600.00	0.00	0.00	600.00	0.00	0.00	14,747,650.72	1,755,853.94	40.60590082	-104.58410037
700.00	0.00	0.00	700.00	0.00	0.00	14,747,650.72	1,755,853.94	40.60590082	-104.58410037
800.00	0.00	0.00	800.00	0.00	0.00	14,747,650.72	1,755,853.94	40.60590082	-104.58410037
900.00	0.00	0.00	900.00	0.00	0.00	14,747,650.72	1,755,853.94	40.60590082	-104.58410037
1,000.00	0.00	0.00	1,000.00	0.00	0.00	14,747,650.72	1,755,853.94	40.60590082	-104.58410037
1,100.00	0.00	0.00	1,100.00	0.00	0.00	14,747,650.72	1,755,853.94	40.60590082	-104.58410037
1,200.00	0.00	0.00	1,200.00	0.00	0.00	14,747,650.72	1,755,853.94	40.60590082	-104.58410037
1,300.00	0.00	0.00	1,300.00	0.00	0.00	14,747,650.72	1,755,853.94	40.60590082	-104.58410037
1,400.00	0.00	0.00	1,400.00	0.00	0.00	14,747,650.72	1,755,853.94	40.60590082	-104.58410037
1,500.00	0.00	0.00	1,500.00	0.00	0.00	14,747,650.72	1,755,853.94	40.60590082	-104.58410037
1,600.00	0.00	0.00	1,600.00	0.00	0.00	14,747,650.72	1,755,853.94	40.60590082	-104.58410037
1,700.00	0.00	0.00	1,700.00	0.00	0.00	14,747,650.72	1,755,853.94	40.60590082	-104.58410037
1,800.00	0.00	0.00	1,800.00	0.00	0.00	14,747,650.72	1,755,853.94	40.60590082	-104.58410037
1,900.00	0.00	0.00	1,900.00	0.00	0.00	14,747,650.72	1,755,853.94	40.60590082	-104.58410037
2,000.00	0.00	0.00	2,000.00	0.00	0.00	14,747,650.72	1,755,853.94	40.60590082	-104.58410037
2,100.00	0.00	0.00	2,100.00	0.00	0.00	14,747,650.72	1,755,853.94	40.60590082	-104.58410037
2,200.00	0.00	0.00	2,200.00	0.00	0.00	14,747,650.72	1,755,853.94	40.60590082	-104.58410037
2,300.00	0.00	0.00	2,300.00	0.00	0.00	14,747,650.72	1,755,853.94	40.60590082	-104.58410037
2,400.00	0.00	0.00	2,400.00	0.00	0.00	14,747,650.72	1,755,853.94	40.60590082	-104.58410037
2,500.00	0.00	0.00	2,500.00	0.00	0.00	14,747,650.72	1,755,853.94	40.60590082	-104.58410037
2,600.00	0.00	0.00	2,600.00	0.00	0.00	14,747,650.72	1,755,853.94	40.60590082	-104.58410037
2,700.00	0.00	0.00	2,700.00	0.00	0.00	14,747,650.72	1,755,853.94	40.60590082	-104.58410037
2,800.00	0.00	0.00	2,800.00	0.00	0.00	14,747,650.72	1,755,853.94	40.60590082	-104.58410037
2,900.00	0.00	0.00	2,900.00	0.00	0.00	14,747,650.72	1,755,853.94	40.60590082	-104.58410037
3,000.00	0.00	0.00	3,000.00	0.00	0.00	14,747,650.72	1,755,853.94	40.60590082	-104.58410037
KOP Begin 1°/100' build									
3,100.00	1.00	85.52	3,099.99	0.07	0.87	14,747,650.79	1,755,854.81	40.60590100	-104.58409723
3,200.00	2.00	85.52	3,199.96	0.27	3.48	14,747,651.01	1,755,857.42	40.60590157	-104.58408783
3,300.00	3.00	85.52	3,299.86	0.61	7.83	14,747,651.37	1,755,861.76	40.60590250	-104.58407216
3,388.40	3.88	85.52	3,388.10	1.03	13.12	14,747,651.81	1,755,867.05	40.60590364	-104.58405310
Begin 3.88° tangent									
3,400.00	3.88	85.52	3,399.68	1.09	13.90	14,747,651.87	1,755,867.84	40.60590381	-104.58405028
3,500.00	3.88	85.52	3,499.45	1.62	20.66	14,747,652.44	1,755,874.59	40.60590526	-104.58402595
3,600.00	3.88	85.52	3,599.22	2.15	27.41	14,747,653.00	1,755,881.34	40.60590671	-104.58400162
3,700.00	3.88	85.52	3,698.99	2.68	34.16	14,747,653.56	1,755,888.09	40.60590817	-104.58397729
3,800.00	3.88	85.52	3,798.76	3.21	40.91	14,747,654.12	1,755,894.84	40.60590962	-104.58395296
3,900.00	3.88	85.52	3,898.53	3.73	47.67	14,747,654.68	1,755,901.59	40.60591107	-104.58392863
4,000.00	3.88	85.52	3,998.30	4.26	54.42	14,747,655.24	1,755,908.34	40.60591252	-104.58390430
4,100.00	3.88	85.52	4,098.07	4.79	61.17	14,747,655.80	1,755,915.09	40.60591398	-104.58387997
4,200.00	3.88	85.52	4,197.84	5.32	67.93	14,747,656.36	1,755,921.84	40.60591543	-104.58385564
4,300.00	3.88	85.52	4,297.61	5.85	74.68	14,747,656.92	1,755,928.59	40.60591688	-104.58383131
4,400.00	3.88	85.52	4,397.38	6.38	81.43	14,747,657.48	1,755,935.34	40.60591834	-104.58380698
4,500.00	3.88	85.52	4,497.15	6.91	88.19	14,747,658.05	1,755,942.09	40.60591979	-104.58378266
4,600.00	3.88	85.52	4,596.92	7.44	94.94	14,747,658.61	1,755,948.84	40.60592124	-104.58375833
4,700.00	3.88	85.52	4,696.69	7.97	101.69	14,747,659.17	1,755,955.59	40.60592269	-104.58373400
4,800.00	3.88	85.52	4,796.46	8.50	108.44	14,747,659.73	1,755,962.34	40.60592415	-104.58370967
4,900.00	3.88	85.52	4,896.23	9.03	115.20	14,747,660.29	1,755,969.09	40.60592560	-104.58368534
5,000.00	3.88	85.52	4,996.00	9.55	121.95	14,747,660.85	1,755,975.84	40.60592705	-104.58366101

Database:	DB_Jul2216dt_v14	Local Co-ordinate Reference:	Well Almont 5-03-01L
Company:	Confluence Resources	TVD Reference:	RKB=5001+24 @ 5025.00ft
Project:	Weld County, Colorado	MD Reference:	RKB=5001+24 @ 5025.00ft
Site:	Section 06-T07N-R64W	North Reference:	True
Well:	Almont 5-03-01L	Survey Calculation Method:	Minimum Curvature
Wellbore:	Original Hole		
Design:	plan1		

Planned Survey									
Measured Depth (ft)	Inclination (°)	Azimuth (°)	Vertical Depth (ft)	+N/-S (ft)	+E/-W (ft)	Map Northing (usft)	Map Easting (usft)	Latitude	Longitude
5,100.00	3.88	85.52	5,095.77	10.08	128.70	14,747,661.41	1,755,982.59	40.60592850	-104.58363668
5,200.00	3.88	85.52	5,195.54	10.61	135.46	14,747,661.97	1,755,989.34	40.60592996	-104.58361235
5,300.00	3.88	85.52	5,295.31	11.14	142.21	14,747,662.53	1,755,996.09	40.60593141	-104.58358802
5,400.00	3.88	85.52	5,395.08	11.67	148.96	14,747,663.09	1,756,002.84	40.60593286	-104.58356369
5,500.00	3.88	85.52	5,494.85	12.20	155.72	14,747,663.66	1,756,009.59	40.60593431	-104.58353936
5,600.00	3.88	85.52	5,594.62	12.73	162.47	14,747,664.22	1,756,016.35	40.60593577	-104.58351503
5,700.00	3.88	85.52	5,694.39	13.26	169.22	14,747,664.78	1,756,023.10	40.60593722	-104.58349070
5,800.00	3.88	85.52	5,794.16	13.79	175.97	14,747,665.34	1,756,029.85	40.60593867	-104.58346637
5,900.00	3.88	85.52	5,893.93	14.32	182.73	14,747,665.90	1,756,036.60	40.60594013	-104.58344204
6,000.00	3.88	85.52	5,993.70	14.85	189.48	14,747,666.46	1,756,043.35	40.60594158	-104.58341771
6,100.00	3.88	85.52	6,093.47	15.37	196.23	14,747,667.02	1,756,050.10	40.60594303	-104.58339338
6,200.00	3.88	85.52	6,193.25	15.90	202.99	14,747,667.58	1,756,056.85	40.60594448	-104.58336906
6,300.00	3.88	85.52	6,293.02	16.43	209.74	14,747,668.14	1,756,063.60	40.60594594	-104.58334473
6,400.00	3.88	85.52	6,392.79	16.96	216.49	14,747,668.70	1,756,070.35	40.60594739	-104.58332040
6,499.21	3.88	85.52	6,491.76	17.49	223.19	14,747,669.26	1,756,077.05	40.60594883	-104.58329626
Begin 10°/100' build/turn									
6,500.00	3.96	85.60	6,492.56	17.49	223.25	14,747,669.27	1,756,077.10	40.60594884	-104.58329606
6,600.00	13.96	88.42	6,591.21	18.09	238.79	14,747,669.94	1,756,092.64	40.60595048	-104.58324008
6,700.00	23.96	88.90	6,685.67	18.81	271.22	14,747,670.81	1,756,125.07	40.60595246	-104.58312322
6,800.00	33.95	89.11	6,773.06	19.63	319.56	14,747,671.86	1,756,173.41	40.60595472	-104.58294905
6,900.00	43.95	89.23	6,850.72	20.53	382.35	14,747,673.06	1,756,236.19	40.60595719	-104.58272286
7,000.00	53.95	89.32	6,916.31	21.48	457.67	14,747,674.36	1,756,311.50	40.60595979	-104.58245151
7,100.00	63.95	89.38	6,967.81	22.45	543.23	14,747,675.73	1,756,397.05	40.60596244	-104.58214325
7,200.00	73.95	89.44	7,003.68	23.41	636.43	14,747,677.13	1,756,490.25	40.60596507	-104.58180745
7,300.00	83.95	89.49	7,022.81	24.33	734.45	14,747,678.52	1,756,588.27	40.60596759	-104.58145431
7,360.46	90.00	89.51	7,026.00	24.86	794.80	14,747,679.33	1,756,648.61	40.60596903	-104.58123690
Begin 90.00° lateral									
7,400.00	90.00	89.51	7,026.00	25.19	834.34	14,747,679.85	1,756,688.14	40.60596995	-104.58109445
7,500.00	90.00	89.51	7,026.00	26.04	934.33	14,747,681.17	1,756,788.14	40.60597226	-104.58073419
7,600.00	90.00	89.51	7,026.00	26.88	1,034.33	14,747,682.49	1,756,888.13	40.60597458	-104.58037392
7,700.00	90.00	89.51	7,026.00	27.73	1,134.32	14,747,683.81	1,756,988.12	40.60597689	-104.58001366
7,800.00	90.00	89.51	7,026.00	28.58	1,234.32	14,747,685.13	1,757,088.11	40.60597920	-104.57965340
7,900.00	90.00	89.51	7,026.00	29.43	1,334.32	14,747,686.45	1,757,188.10	40.60598151	-104.57929313
8,000.00	90.00	89.51	7,026.00	30.27	1,434.31	14,747,687.77	1,757,288.09	40.60598382	-104.57893287
8,100.00	90.00	89.51	7,026.00	31.12	1,534.31	14,747,689.09	1,757,388.08	40.60598613	-104.57857261
8,200.00	90.00	89.51	7,026.00	31.97	1,634.31	14,747,690.41	1,757,488.07	40.60598844	-104.57821234
8,300.00	90.00	89.51	7,026.00	32.81	1,734.30	14,747,691.73	1,757,588.06	40.60599075	-104.57785208
8,400.00	90.00	89.51	7,026.00	33.66	1,834.30	14,747,693.05	1,757,688.06	40.60599305	-104.57749181
8,500.00	90.00	89.51	7,026.00	34.51	1,934.30	14,747,694.37	1,757,788.05	40.60599536	-104.57713155
8,600.00	90.00	89.51	7,026.00	35.35	2,034.29	14,747,695.68	1,757,888.04	40.60599766	-104.57677129
8,700.00	90.00	89.51	7,026.00	36.20	2,134.29	14,747,697.00	1,757,988.03	40.60599997	-104.57641102
8,800.00	90.00	89.51	7,026.00	37.05	2,234.29	14,747,698.32	1,758,088.02	40.60600227	-104.57605076
8,900.00	90.00	89.51	7,026.00	37.90	2,334.28	14,747,699.64	1,758,188.01	40.60600457	-104.57569049
9,000.00	90.00	89.51	7,026.00	38.74	2,434.28	14,747,700.96	1,758,288.00	40.60600687	-104.57533023
9,100.00	90.00	89.51	7,026.00	39.59	2,534.27	14,747,702.28	1,758,387.99	40.60600916	-104.57496997
9,200.00	90.00	89.51	7,026.00	40.44	2,634.27	14,747,703.60	1,758,487.98	40.60601146	-104.57460970
9,300.00	90.00	89.51	7,026.00	41.28	2,734.27	14,747,704.92	1,758,587.98	40.60601376	-104.57424944
9,400.00	90.00	89.51	7,026.00	42.13	2,834.26	14,747,706.24	1,758,687.97	40.60601605	-104.57388917
9,500.00	90.00	89.51	7,026.00	42.98	2,934.26	14,747,707.56	1,758,787.96	40.60601834	-104.57352891
9,600.00	90.00	89.51	7,026.00	43.82	3,034.26	14,747,708.88	1,758,887.95	40.60602064	-104.57316865
9,700.00	90.00	89.51	7,026.00	44.67	3,134.25	14,747,710.20	1,758,987.94	40.60602293	-104.57280838
9,800.00	90.00	89.51	7,026.00	45.52	3,234.25	14,747,711.52	1,759,087.93	40.60602522	-104.57244812
9,900.00	90.00	89.51	7,026.00	46.37	3,334.25	14,747,712.84	1,759,187.92	40.60602751	-104.57208785
10,000.00	90.00	89.51	7,026.00	47.21	3,434.24	14,747,714.16	1,759,287.91	40.60602979	-104.57172759

Database:	DB_Jul2216dt_v14	Local Co-ordinate Reference:	Well Almont 5-03-01L
Company:	Confluence Resources	TVD Reference:	RKB=5001+24 @ 5025.00ft
Project:	Weld County, Colorado	MD Reference:	RKB=5001+24 @ 5025.00ft
Site:	Section 06-T07N-R64W	North Reference:	True
Well:	Almont 5-03-01L	Survey Calculation Method:	Minimum Curvature
Wellbore:	Original Hole		
Design:	plan1		

Planned Survey									
Measured Depth (ft)	Inclination (°)	Azimuth (°)	Vertical Depth (ft)	+N/-S (ft)	+E/-W (ft)	Map Northing (usft)	Map Easting (usft)	Latitude	Longitude
10,100.00	90.00	89.51	7,026.00	48.06	3,534.24	14,747,715.48	1,759,387.90	40.60603208	-104.57136733
10,200.00	90.00	89.51	7,026.00	48.91	3,634.24	14,747,716.80	1,759,487.90	40.60603437	-104.57100706
10,300.00	90.00	89.51	7,026.00	49.75	3,734.23	14,747,718.12	1,759,587.89	40.60603665	-104.57064680
10,400.00	90.00	89.51	7,026.00	50.60	3,834.23	14,747,719.43	1,759,687.88	40.60603893	-104.57028653
10,500.00	90.00	89.51	7,026.00	51.45	3,934.22	14,747,720.75	1,759,787.87	40.60604122	-104.56992627
10,600.00	90.00	89.51	7,026.00	52.29	4,034.22	14,747,722.07	1,759,887.86	40.60604350	-104.56956601
10,700.00	90.00	89.51	7,026.00	53.14	4,134.22	14,747,723.39	1,759,987.85	40.60604578	-104.56920574
10,800.00	90.00	89.51	7,026.00	53.99	4,234.21	14,747,724.71	1,760,087.84	40.60604806	-104.56884548
10,900.00	90.00	89.51	7,026.00	54.84	4,334.21	14,747,726.03	1,760,187.83	40.60605033	-104.56848521
11,000.00	90.00	89.51	7,026.00	55.68	4,434.21	14,747,727.35	1,760,287.82	40.60605261	-104.56812495
11,100.00	90.00	89.51	7,026.00	56.53	4,534.20	14,747,728.67	1,760,387.82	40.60605489	-104.56776468
11,200.00	90.00	89.51	7,026.00	57.38	4,634.20	14,747,729.99	1,760,487.81	40.60605716	-104.56740442
11,300.00	90.00	89.51	7,026.00	58.22	4,734.20	14,747,731.31	1,760,587.80	40.60605943	-104.56704416
11,400.00	90.00	89.51	7,026.00	59.07	4,834.19	14,747,732.63	1,760,687.79	40.60606171	-104.56668389
11,500.00	90.00	89.51	7,026.00	59.92	4,934.19	14,747,733.95	1,760,787.78	40.60606398	-104.56632363
11,600.00	90.00	89.51	7,026.00	60.76	5,034.19	14,747,735.27	1,760,887.77	40.60606625	-104.56596336
11,700.00	90.00	89.51	7,026.00	61.61	5,134.18	14,747,736.59	1,760,987.76	40.60606852	-104.56560310
11,800.00	90.00	89.51	7,026.00	62.46	5,234.18	14,747,737.91	1,761,087.75	40.60607078	-104.56524284
11,900.00	90.00	89.51	7,026.00	63.31	5,334.17	14,747,739.23	1,761,187.74	40.60607305	-104.56488257
12,000.00	90.00	89.51	7,026.00	64.15	5,434.17	14,747,740.55	1,761,287.74	40.60607531	-104.56452231
12,100.00	90.00	89.51	7,026.00	65.00	5,534.17	14,747,741.87	1,761,387.73	40.60607758	-104.56416204
12,200.00	90.00	89.51	7,026.00	65.85	5,634.16	14,747,743.19	1,761,487.72	40.60607984	-104.56380178
12,300.00	90.00	89.51	7,026.00	66.69	5,734.16	14,747,744.50	1,761,587.71	40.60608210	-104.56344151
12,400.00	90.00	89.51	7,026.00	67.54	5,834.16	14,747,745.82	1,761,687.70	40.60608436	-104.56308125
12,500.00	90.00	89.51	7,026.00	68.39	5,934.15	14,747,747.14	1,761,787.69	40.60608662	-104.56272098
12,600.00	90.00	89.51	7,026.00	69.23	6,034.15	14,747,748.46	1,761,887.68	40.60608888	-104.56236072
12,700.00	90.00	89.51	7,026.00	70.08	6,134.15	14,747,749.78	1,761,987.67	40.60609114	-104.56200046
12,800.00	90.00	89.51	7,026.00	70.93	6,234.14	14,747,751.10	1,762,087.66	40.60609340	-104.56164019
12,900.00	90.00	89.51	7,026.00	71.78	6,334.14	14,747,752.42	1,762,187.66	40.60609565	-104.56127993
13,000.00	90.00	89.51	7,026.00	72.62	6,434.13	14,747,753.74	1,762,287.65	40.60609791	-104.56091966
13,100.00	90.00	89.51	7,026.00	73.47	6,534.13	14,747,755.06	1,762,387.64	40.60610016	-104.56055940
13,200.00	90.00	89.51	7,026.00	74.32	6,634.13	14,747,756.38	1,762,487.63	40.60610241	-104.56019913
13,300.00	90.00	89.51	7,026.00	75.16	6,734.12	14,747,757.70	1,762,587.62	40.60610466	-104.55983887
13,400.00	90.00	89.51	7,026.00	76.01	6,834.12	14,747,759.02	1,762,687.61	40.60610691	-104.55947860
13,500.00	90.00	89.51	7,026.00	76.86	6,934.12	14,747,760.34	1,762,787.60	40.60610916	-104.55911834
13,600.00	90.00	89.51	7,026.00	77.70	7,034.11	14,747,761.66	1,762,887.59	40.60611141	-104.55875807
13,700.00	90.00	89.51	7,026.00	78.55	7,134.11	14,747,762.98	1,762,987.58	40.60611365	-104.55839781
13,800.00	90.00	89.51	7,026.00	79.40	7,234.11	14,747,764.30	1,763,087.58	40.60611590	-104.55803755
13,900.00	90.00	89.51	7,026.00	80.25	7,334.10	14,747,765.62	1,763,187.57	40.60611814	-104.55767728
14,000.00	90.00	89.51	7,026.00	81.09	7,434.10	14,747,766.94	1,763,287.56	40.60612039	-104.55731702
14,100.00	90.00	89.51	7,026.00	81.94	7,534.10	14,747,768.25	1,763,387.55	40.60612263	-104.55695675
14,200.00	90.00	89.51	7,026.00	82.79	7,634.09	14,747,769.57	1,763,487.54	40.60612487	-104.55659649
14,300.00	90.00	89.51	7,026.00	83.63	7,734.09	14,747,770.89	1,763,587.53	40.60612711	-104.55623622
14,400.00	90.00	89.51	7,026.00	84.48	7,834.08	14,747,772.21	1,763,687.52	40.60612935	-104.55587596
14,500.00	90.00	89.51	7,026.00	85.33	7,934.08	14,747,773.53	1,763,787.51	40.60613158	-104.55551569
14,600.00	90.00	89.51	7,026.00	86.17	8,034.08	14,747,774.85	1,763,887.50	40.60613382	-104.55515543
14,700.00	90.00	89.51	7,026.00	87.02	8,134.07	14,747,776.17	1,763,987.49	40.60613605	-104.55479516
14,800.00	90.00	89.51	7,026.00	87.87	8,234.07	14,747,777.49	1,764,087.49	40.60613829	-104.55443490
14,900.00	90.00	89.51	7,026.00	88.72	8,334.07	14,747,778.81	1,764,187.48	40.60614052	-104.55407463
15,000.00	90.00	89.51	7,026.00	89.56	8,434.06	14,747,780.13	1,764,287.47	40.60614275	-104.55371437
15,100.00	90.00	89.51	7,026.00	90.41	8,534.06	14,747,781.45	1,764,387.46	40.60614498	-104.55335410
15,200.00	90.00	89.51	7,026.00	91.26	8,634.06	14,747,782.77	1,764,487.45	40.60614721	-104.55299384
15,300.00	90.00	89.51	7,026.00	92.10	8,734.05	14,747,784.09	1,764,587.44	40.60614944	-104.55263357
15,400.00	90.00	89.51	7,026.00	92.95	8,834.05	14,747,785.41	1,764,687.43	40.60615167	-104.55227331
15,500.00	90.00	89.51	7,026.00	93.80	8,934.05	14,747,786.73	1,764,787.42	40.60615389	-104.55191305

Database:	DB_Jul2216dt_v14	Local Co-ordinate Reference:	Well Almont 5-03-01L
Company:	Confluence Resources	TVD Reference:	RKB=5001+24 @ 5025.00ft
Project:	Weld County, Colorado	MD Reference:	RKB=5001+24 @ 5025.00ft
Site:	Section 06-T07N-R64W	North Reference:	True
Well:	Almont 5-03-01L	Survey Calculation Method:	Minimum Curvature
Wellbore:	Original Hole		
Design:	plan1		

Planned Survey									
Measured Depth (ft)	Inclination (°)	Azimuth (°)	Vertical Depth (ft)	+N/-S (ft)	+E/-W (ft)	Map Northing (usft)	Map Easting (usft)	Latitude	Longitude
15,600.00	90.00	89.51	7,026.00	94.64	9,034.04	14,747,788.05	1,764,887.41	40.60615612	-104.55155278
15,700.00	90.00	89.51	7,026.00	95.49	9,134.04	14,747,789.37	1,764,987.41	40.60615834	-104.55119252
15,800.00	90.00	89.51	7,026.00	96.34	9,234.03	14,747,790.69	1,765,087.40	40.60616056	-104.55083225
15,900.00	90.00	89.51	7,026.00	97.19	9,334.03	14,747,792.00	1,765,187.39	40.60616279	-104.55047199
16,000.00	90.00	89.51	7,026.00	98.03	9,434.03	14,747,793.32	1,765,287.38	40.60616501	-104.55011172
16,100.00	90.00	89.51	7,026.00	98.88	9,534.02	14,747,794.64	1,765,387.37	40.60616723	-104.54975146
16,200.00	90.00	89.51	7,026.00	99.73	9,634.02	14,747,795.96	1,765,487.36	40.60616944	-104.54939119
16,300.00	90.00	89.51	7,026.00	100.57	9,734.02	14,747,797.28	1,765,587.35	40.60617166	-104.54903093
16,400.00	90.00	89.51	7,026.00	101.42	9,834.01	14,747,798.60	1,765,687.34	40.60617388	-104.54867066
16,500.00	90.00	89.51	7,026.00	102.27	9,934.01	14,747,799.92	1,765,787.33	40.60617609	-104.54831040
16,600.00	90.00	89.51	7,026.00	103.11	10,034.01	14,747,801.24	1,765,887.33	40.60617831	-104.54795013
16,700.00	90.00	89.51	7,026.00	103.96	10,134.00	14,747,802.56	1,765,987.32	40.60618052	-104.54758987
16,800.00	90.00	89.51	7,026.00	104.81	10,234.00	14,747,803.88	1,766,087.31	40.60618273	-104.54722960
16,900.00	90.00	89.51	7,026.00	105.66	10,334.00	14,747,805.20	1,766,187.30	40.60618494	-104.54686934
17,000.00	90.00	89.51	7,026.00	106.50	10,433.99	14,747,806.52	1,766,287.29	40.60618715	-104.54650907
17,018.25	90.00	89.51	7,026.00	106.66	10,452.24	14,747,806.76	1,766,305.54	40.60618755	-104.54644332
PBHL/TD 17018.25 MD/7026.00 TVD									

Design Targets									
Target Name	Dip Angle (°)	Dip Dir. (°)	TVD (ft)	+N/-S (ft)	+E/-W (ft)	Northing (usft)	Easting (usft)	Latitude	Longitude
- hit/miss target									
- Shape									
Almont 5-03-01L PBHL 1	0.00	0.00	7,026.00	106.66	10,452.24	14,747,806.76	1,766,305.54	40.60618755	-104.54644332
- plan hits target center									
- Point									
Almont 5-03-01L LP 115	0.00	0.00	7,026.00	24.86	794.80	14,747,679.33	1,756,648.61	40.60596903	-104.58123690
- plan hits target center									
- Point									

Plan Annotations				
Measured Depth (ft)	Vertical Depth (ft)	Local Coordinates		Comment
		+N/-S (ft)	+E/-W (ft)	
3,000.00	3,000.00	0.00	0.00	KOP Begin 1°/100' build
3,388.40	3,388.10	1.03	13.12	Begin 3.88° tangent
6,499.21	6,491.76	17.49	223.19	Begin 10°/100' build/turn
7,360.46	7,026.00	24.86	794.80	Begin 90.00° lateral
17,018.25	7,026.00	106.66	10,452.24	PBHL/TD 17018.25 MD/7026.00 TVD