

State Anderson 2-36
 #WNN 36-5N-68W
 Comp. 5-10-88
 IPF 15 BOPD
 250 MCF
 Muddy J.
 JOHNSON'S
 CORP. INC.

9/1990

ac. w/
 750 gal. 7 1/2% H₂O
 frac. upper N. & w/
 49,010 gal
 w/ 20% CO₂
 940 Bbls
 64,320 # 20/40 sand
 (design was
 66,500 gal w/ 20% CO₂
 151,000 # sd.)
 screen out w/ 129 Bbls
 fluid.
 restart frac w/ gas/hand
 of 850 gal. 7 1/2% H₂O

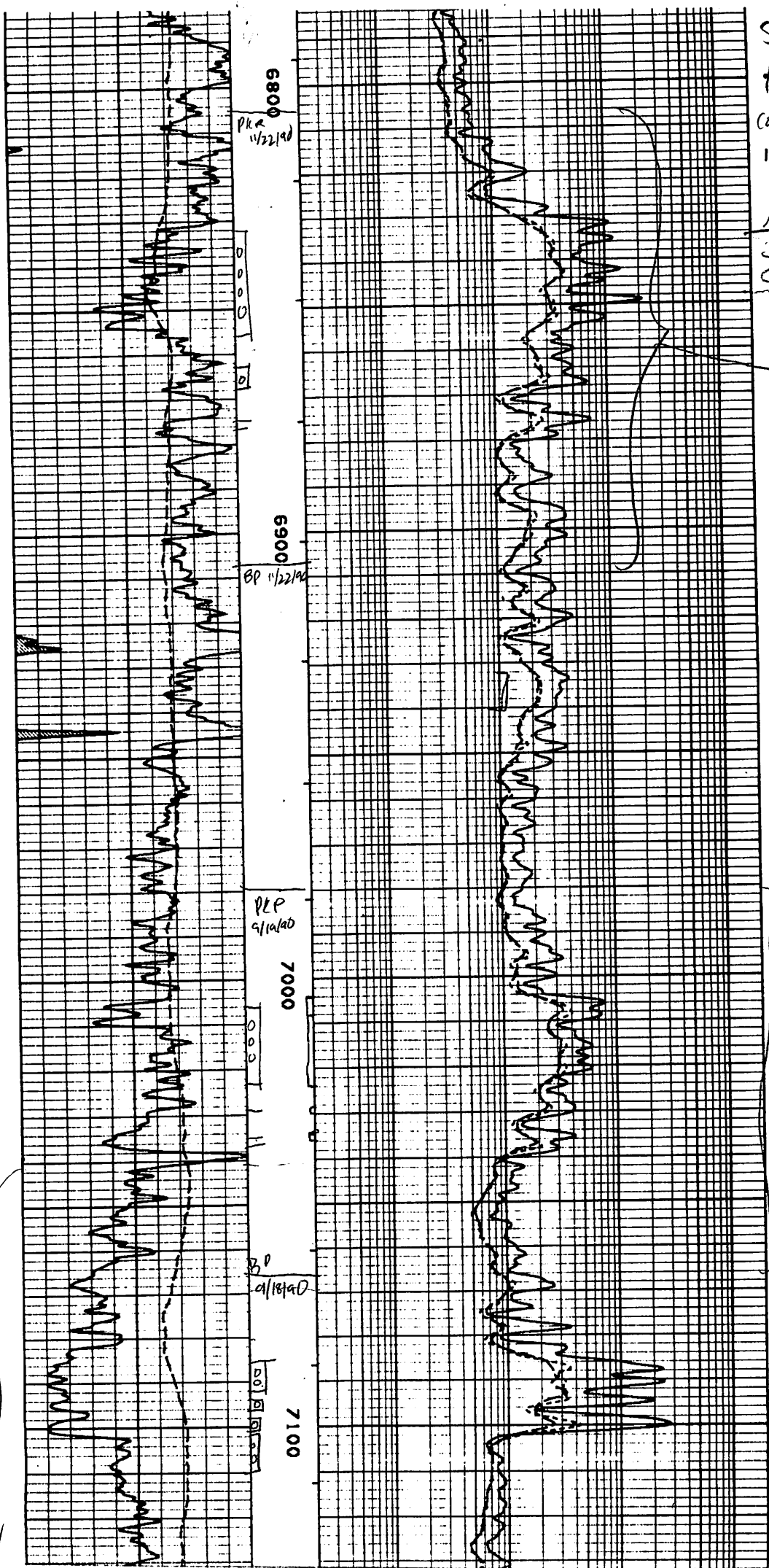
9/1990

ac lower N. & w/
 425 gal
 7 1/2% H₂O
 frac lower N. &
 w/ (no CO₂)
 47,700 gal
 1136 Bbls gal
 91,000 # 20/40
 10 CO₂

6/1990

ac w/
 425 gal
 7 1/2% H₂O
 frac. w/
 78,000 gal
 152,000 # 20/40
 sand
 single stage
 no CO₂

(Peterson)



5/2/88 perf muddy J, acidize
 5/3/88 frac ...
 11/8 service
 6/29/90 pres. - Timpas/codell
 9/30/90 BP @ 7400, 16' of sand over BP, pk - 58.8' over top
 Timpas per
 acidize Timpas/codell down tubing
 7/2/90 frac Timpas/codell w/ single stage xlink gel, no CO₂
 7/6/90 well sr
 7/23/90 service plug
 9/17/90
 9-18/90 perf Nio - lower BP 7065
 9/19/90 isolate acidize lower
 frac, lower Nio
 9/21/90 sand over BP to 6952'

9/22/90 perf upper Nio
 9/25/90 frac. upper Nio - I think just
 10/19/90 service
 2-92 PBD 7642 metal kump @ 750
 sand fill @ 7349
 failed to 7434
 flowing