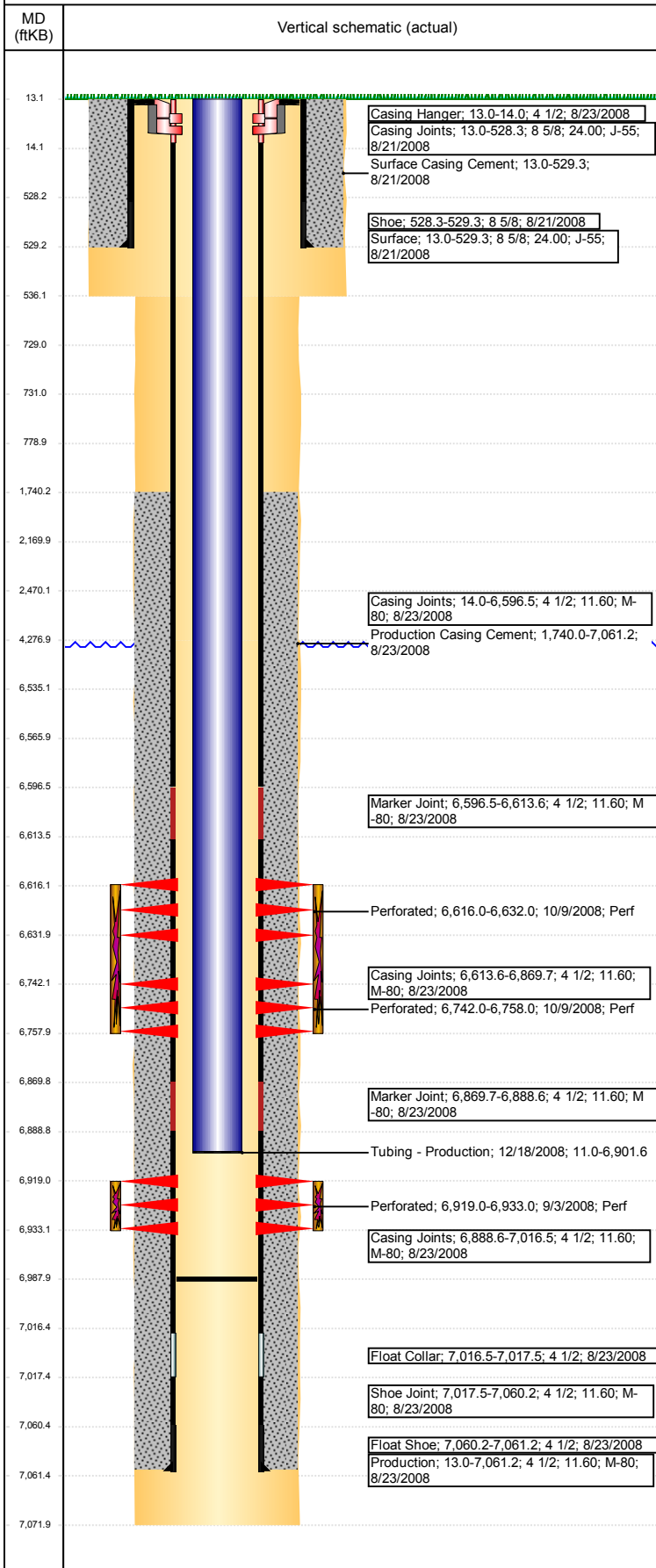


Wellbore Schematic Input Report

Well Name: DPG F 1-24

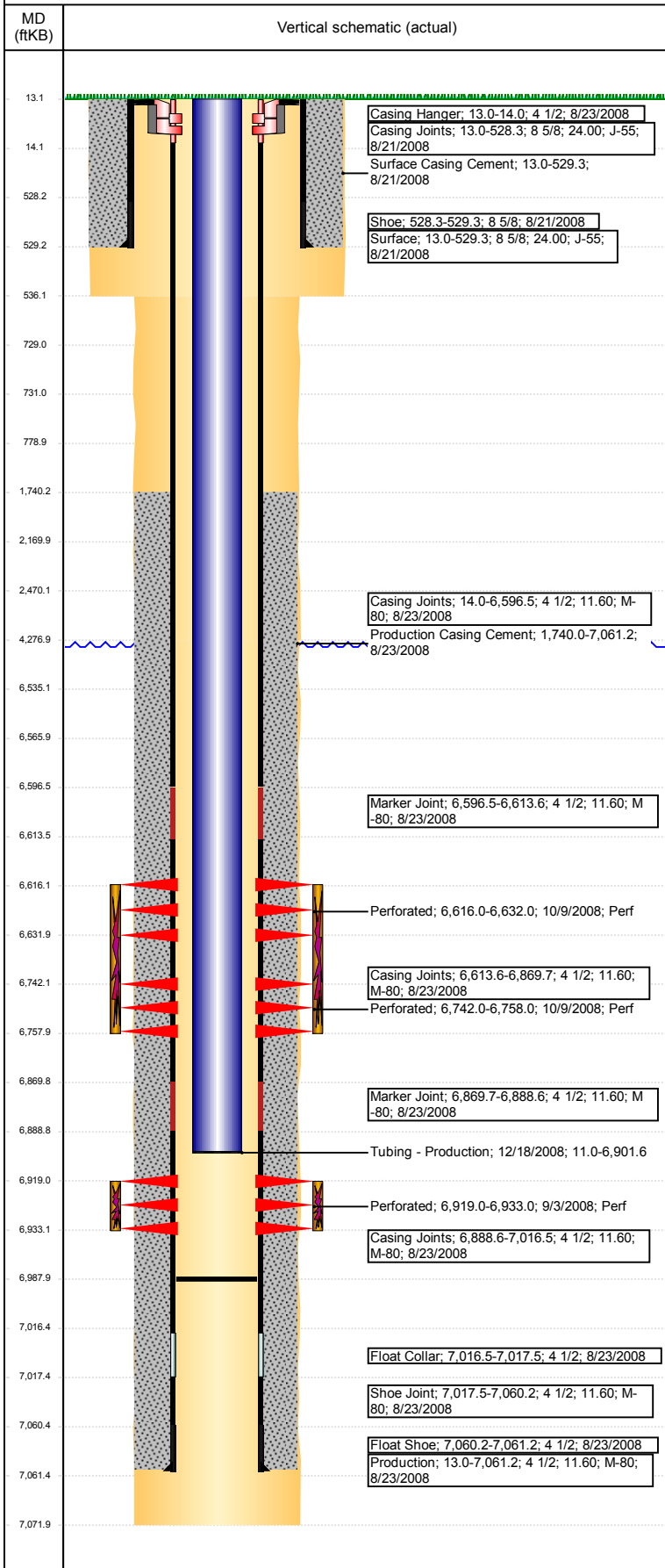
VERTICAL - ORIGINAL HOLE, 3/1/2018 11:27:44 AM



Well Header							
API 05-123-27169		Well Report Center 425674889		Well Configuration Type VERTICAL			
Original KB Elevation (ft) 4,625		KB - GL / MSL (ftKB) 13.00		Spud Date 8/20/2008		P & A Date	
Production Route Watt - A3-01			Well Production Status PR			SoRT Ignore No	
Directions To Well From the intersection of CR 47 and East 8th Street, go South 2/10ths of a mile, then East 6/10ths of a mile to location.				Actual Latitude (°) 40.42401029		Actual Longitude (°) -104.61030265	
Comment 318A.e. LOCATION!!							
Congressional Location							
Quarter 3 SW	Quarter 4 SE	Section 1	Township 5	Twnshp N/S Dir N	Range 65	Range E/W Dir W	
Rig Operator							
Rig Operator							
Plug Back Total Depths							
Date	Depth (ftKB)	Method			Com		
12/17/2008	6,987.8	TAG					
Wellbore Sections							
Section Des		Size (in)		Act Top, MD (ftKB)		Act Btm, MD (ftKB)	
SURFACE		12 1/4		13		536	
PRODUCTION		7 7/8		536		4,277	
PRODUCTION		7 7/8		4277		7,072	
Zone Statuses							
Zone Name		Status Date			Status		
CODELL		10/11/2008			PR		
NIOBRARA		10/11/2008			PR		
Casing Strings							
Surface, 529.3ftKB							
Casing Description	Run Date	OD (in)	Wt/Len (l...	Grade	Top, MD (ft...	MD (ftKB)	
Surface	8/21/2008	8 5/8	24.00	J-55	13.0	529.3	
Production, 7,061.2ftKB							
Casing Description	Run Date	OD (in)	Wt/Len (l...	Grade	Top, MD (ft...	MD (ftKB)	
Production	8/23/2008	4 1/2	11.60	M-80	13.0	7,061.2	
Cement							
Des			Start Date		Top (ftKB)		Btm (ftKB)
Surface Casing Cement			8/21/2008		13.0		529.3
Production Casing Cement			8/23/2008		1,740.0		7,061.2
Proposed Cement							
Des					Top (ftKB)		Btm (ftKB)
Balance Plug					2,170.0		2,470.0
Stub Plug					729.0		779.0
Shoe Plug					13.0		729.0
Tubing Strings							
Tubing Description	Run Date	String...	ID (in)	Wt (lb/ft)	Grade	Len (ft)	Set De...
Tubing - Production	12/18/2008	2 3/8	2.00	4.70	J-55	6,890.56	
Tubing Components							
Item Des	OD (in)	Wt (lb/ft)	Grade	Jts	Len (ft)	Btm (ftKB)	Btm (TVD) (ftKB)
Tubing	2 3/8	4.70	J-55	224	6,889.06	6,900.1	
Seating Nipple	2 3/8			1	1.10	6,901.2	
Notched collar	2 3/8			1	0.40	6,901.6	
Other In Hole							
Run Date	Des			OD (in)	Top (ftKB)	Btm (ftKB)	
Proposed Other In Hole							
Des			OD (in)		Top (ftKB)	Btm (ftKB)	
Cast Iron Bridge Plug w/ 2 SX Cement			3.99		6,535.0	6,566.0	
Logs							
Date	Type				Top, MD (ftKB)		Btm, MD (ftKB)
8/23/2008	Caliper/Comp. Density/Neutron/GR/SP/ML				2,450.0		7,049.0
8/23/2008	DIL/GR/SP/Caliper				530.0		7,069.0
9/3/2008	CBL/CCL/GR				1,650.0		6,983.0

Well Name: DPG F 1-24

VERTICAL - ORIGINAL HOLE, 3/1/2018 11:27:44 AM



Perforation Data				
Linked Zone	Sum of Entered Shot Total	Top (ftKB)	Btm (ftKB)	Date
NIOBRARA, ORIGINAL HOLE	32	6,616.00	6,632.00	10/9/2008
NIOBRARA, ORIGINAL HOLE	32	6,742.00	6,758.00	10/9/2008
CODELL, ORIGINAL HOLE	56	6,919.00	6,933.00	9/3/2008
Total (Sum)	120			
Job Supply Amounts				
Supply Item Des	Type	Uni...	Job Category	Total ... Total ... Total ...