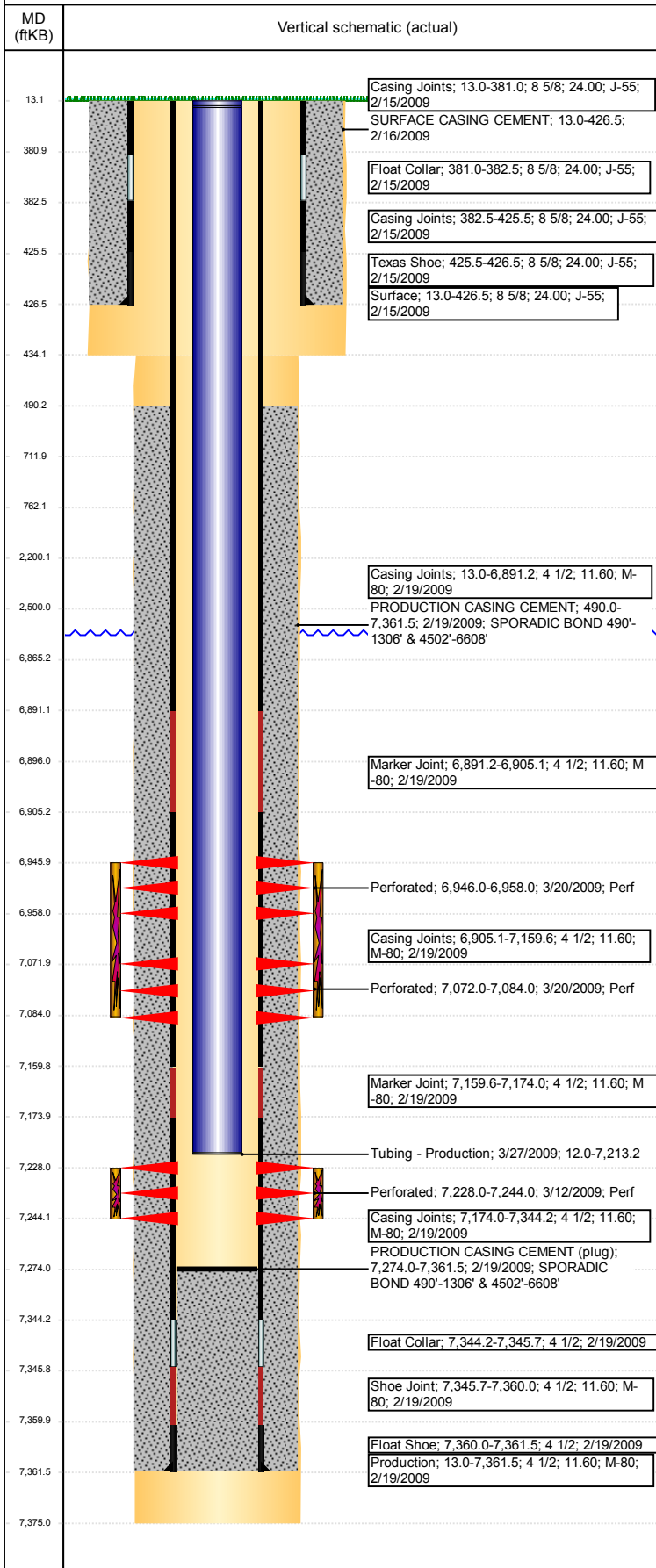


Wellbore Schematic Input Report

Well Name: KOEHLER E33-09D

DEVIATED - ORIGINAL HOLE, 3/1/2018 11:23:36 AM



Well Header

API 05-123-29589	Well Report Center 425676706	Well Configuration Type DEVIATED
Original KB Elevation (ft) 4,684	KB - GL / MSL (ftKB) 13.00	Spud Date 2/15/2009
Production Route A2-04	Well Production Status PR	P & A Date
Directions To Well From the intersection of WCR 43 and 62, go West 1/10, then North 1/10 into location	Actual Latitude (°) 40.43712121	Actual Longitude (°) -104.66178041
Comment		

Congressional Location

Quarter 3 SE	Quarter 4 SE	Section 33	Township 6	Twntshp N/S Dir N	Range 65	Range E/W Dir W
-----------------	-----------------	---------------	---------------	----------------------	-------------	--------------------

Rig Operator

Rig Operator

Plug Back Total Depths

Date	Depth (ftKB)	Method	Com
3/27/2009	7,274.0	TAG	C/O DN TO 7274'KB WITH REMNANT OF PLUG O...

Wellbore Sections

Section Des	Size (in)	Act Top, MD (ftKB)	Act Btm, MD (ftKB)
SURFACE	12 1/4	13	434
PRODUCTION	7 7/8	434	7,375

Zone Statuses

Zone Name	Status Date	Status
NIOBRARA	1/28/2016	PR
CODELL	3/16/2010	PR

Casing Strings

Surface, 426.5ftKB

Casing Description	Run Date	OD (in)	Wt/Len (l...)	Grade	Top, MD (ft...)	MD (ftKB)
Surface	2/15/2009	8 5/8	24.00	J-55	13.0	426.5

Production, 7,361.5ftKB

Casing Description	Run Date	OD (in)	Wt/Len (l...)	Grade	Top, MD (ft...)	MD (ftKB)
Production	2/19/2009	4 1/2	11.60	M-80	13.0	7,361.5

Cement

Des	Start Date	Top (ftKB)	Btm (ftKB)
SURFACE CASING CEMENT	2/16/2009	13.0	426.5
PRODUCTION CASING CEMENT	2/19/2009	490.0	7,361.5

Proposed Cement

Des	Top (ftKB)	Btm (ftKB)
Balance Plug	2,200.0	2,500.0
Stub Plug	712.0	762.0
Shoe Plug	13.0	712.0

Tubing Strings

Tubing Description	Run Date	String...	ID (in)	Wt (lb/ft)	Grade	Len (ft)	Set De...
Tubing - Production	3/27/2009	2 3/8	2.00	4.70	J-55	7,201.20	7,017.4

Tubing Components

Item Des	OD (in)	Wt (lb/ft)	Grade	Jts	Len (ft)	Btm (ftKB)	Btm (TVD) (ftKB)
Tubing	2 3/8	5.80	C-90	1	30.32	42.3	
Tubing	2 3/8	4.70	J-55	1	10.00	52.3	
Tubing	2 3/8	4.70	J-55	1	10.00	62.3	
Tubing	2 3/8	4.70	J-55	233	7,148.98	7,211.3	
Pump Seating Nipple	2 3/8	4.70	XX	1	1.10	7,212.4	7,016.6
Pump Out Sub	2 3/8	4.70	XX	1	0.80	7,213.2	7,017.4

Other In Hole

Run Date	Des	OD (in)	Top (ftKB)	Btm (ftKB)

Proposed Other In Hole

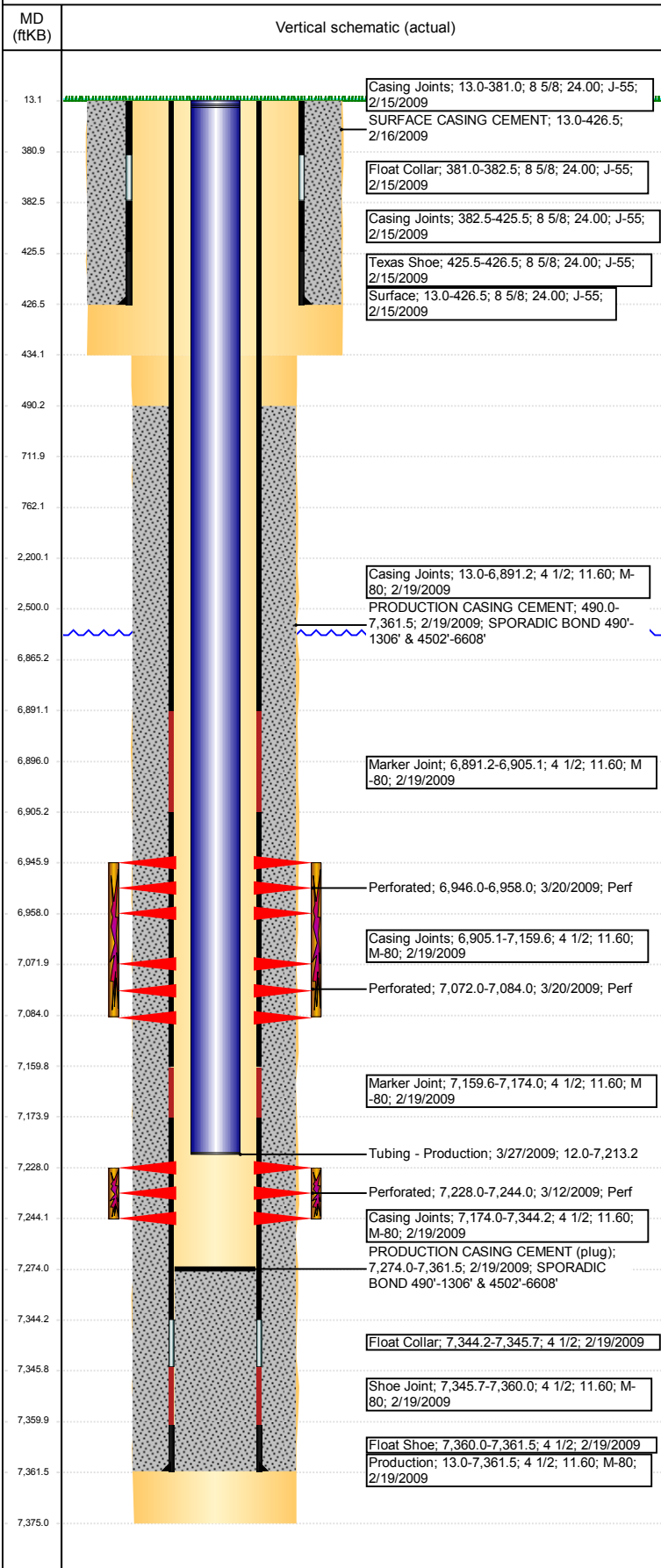
Des	OD (in)	Top (ftKB)	Btm (ftKB)
Cast Iron Bridge Plug w/ 2 SX Cement	4	6,865.0	6,896.0

Logs

Date	Type	Top, MD (ftKB)	Btm, MD (ftKB)
2/19/2009	Caliper/Comp. Density/Neutron/GR/SP/ML	2,590.0	7,389.0

Well Name: KOEHLER E33-09D

DEVIATED - ORIGINAL HOLE, 3/1/2018 11:23:36 AM



Logs			
Date	Type	Top, MD (ftKB)	Btm, MD (ftKB)
2/19/2009	DIL/GR/SP/Caliper	427.0	7,389.0
2/25/2009	CBL/CCL/GR	400.0	7,267.0

Perforation Data				
Linked Zone	Sum of Entered Shot Total	Top (ftKB)	Btm (ftKB)	Date
NIORARA, ORIGINAL HOLE	24	6,946.00	6,958.00	3/20/2009
NIORARA, ORIGINAL HOLE	24	7,072.00	7,084.00	3/20/2009
CODELL, ORIGINAL HOLE	64	7,228.00	7,244.00	3/12/2009
Total (Sum)	112			

Job Supply Amounts					
Supply Item Des	Type	Uni...	Job Category	Total...	Total...