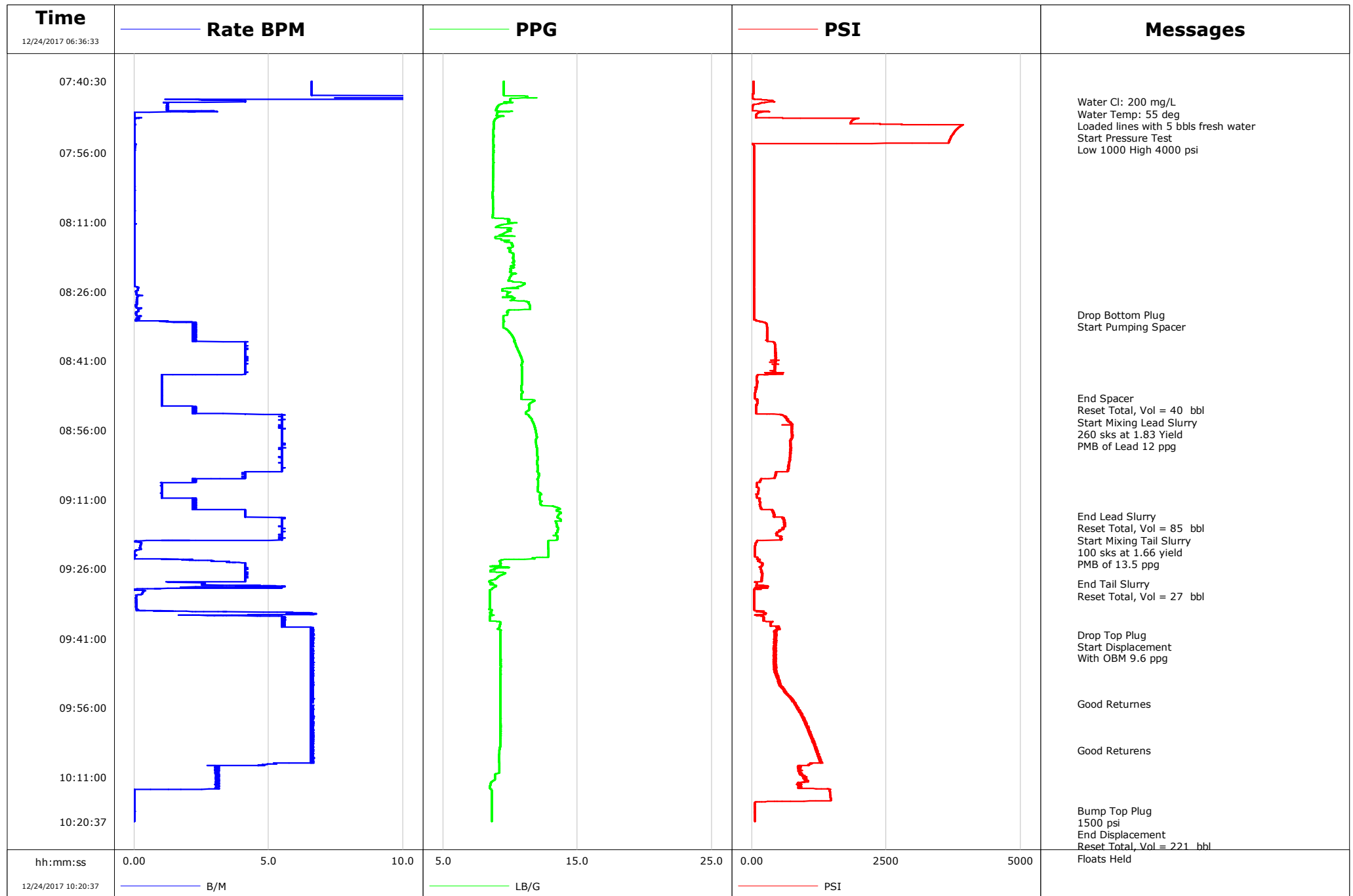


Well Yellowhammer 34C-17HZ
Field Wattenberg
Engineer Reema Alashgar
Country United States

Client ANADARKO
SIR No. D8WD-00911
Job Type 7" Intermediate
Job Date 12-24-2017



Cementing Service Report

				Customer ANADARKO			Job Number D8WD-00911				
Well Yellowhammer 34C-17HZ 34C-17HZ			Location (legal)			Schlumberger Location			Job Start Dec/24/2017		
Field Wattenberg		Formation Name/Type		Deviation deg		Bit Size 8.5 in		Well MD 5913.0 ft		Well TVD 5913.0 ft	
County Wattenberg		State/Province Colorado		BHP psi		BHST 192 degF		BHCT 141 degF		Pore Press. Gradient lb/gal	
Well Master 0631736279		API/UWI									
Rig Name X24		Drilled For Gas		Service Via Land		Casing/ Liner					
						Depth, ft		Size, in		Weight, lb/ft	
Offshore Zone		Well Class New		Well Type Development		5903.7		7.0		26.0	
						0.0		0.0		0.0	
Drilling Fluid Type		Max. Density lb/gal		Plastic Viscosity cP		Tubing/Drill Pipe					
						T/D		Depth, ft		Size, in	
Service Line Cementing		Job Type 7" Intermediate									
Max. Allowed Tub. Press psi		Max. Allowed Ann. Press psi		WH Connection Double Cement head		Perforations/Open Hole					
						Top, ft		Bottom, ft		shot/ft	
						ft		ft			
						ft		ft			
						Treat Down Casing		Displacement 224.0 bbl		Packer Type	
										Packer Depth ft	
						Tubing Vol. bbl		Casing Vol. 109.0 bbl		Annular Vol. bbl	
										Openhole Vol. bbl	
Casing/Tubing Secured <input type="checkbox"/>		1 Hole Vol. Circulated prior to Cement <input checked="" type="checkbox"/>				Casing Tools			Squeeze Job		
Lift Pressure psi						Shoe Type Guide			Squeeze Type		
Pipe Rotated <input type="checkbox"/>		Pipe Reciprocated <input type="checkbox"/>				Shoe Depth 5903.7 ft			Tool Type		
No. Centralizers		Top Plugs 1		Bottom Plugs 1		Stage Tool Type			Tool Depth ft		
Cement Head Type Double						Stage Tool Depth ft			Tail Pipe Size in		
Job Scheduled For Dec/24/2017		Arrived on Location Dec/24/2017		Leave Location Dec/24/2017		Collar Type Float			Tail Pipe Depth ft		
						Collar Depth 5859.6 ft			Sqz. Total Vol. bbl		
Date	Time 24-hr clock	Treating Pressure PSI	Flow Rate B/M	Density LB/G	Volume BBL	Message					
12/24/2017	06:36:33	25	0.0	0.09	0.0						
12/24/2017	06:37:03	25	0.0	0.09	0.0						
12/24/2017	06:37:33	25	0.0	0.09	0.0						
12/24/2017	06:38:03	25	0.0	0.09	0.0						
12/24/2017	06:38:33	26	0.0	0.09	0.0						
12/24/2017	06:39:03	25	0.0	0.09	0.0						
12/24/2017	06:39:33	25	0.0	0.09	0.0						
12/24/2017	06:40:03	25	0.0	0.09	0.0						
12/24/2017	06:40:33	25	0.0	0.09	0.0						
12/24/2017	06:41:03	25	0.0	0.09	0.0						
12/24/2017	06:41:33	25	0.0	0.09	0.0						
12/24/2017	06:42:03	25	0.0	0.09	0.0						
12/24/2017	06:42:33	26	0.0	0.09	0.0						
12/24/2017	06:43:03	25	0.0	0.09	0.0						
12/24/2017	06:43:33	25	0.0	0.09	0.0						
12/24/2017	06:44:03	25	0.0	0.09	0.0						
12/24/2017	06:44:33	25	0.0	0.09	0.0						
12/24/2017	06:45:03	25	0.0	0.09	0.0						
12/24/2017	06:45:33	25	0.0	0.09	0.0						
12/24/2017	06:46:03	26	0.0	0.09	0.0						
12/24/2017	06:46:33	25	0.0	0.09	0.0						

Well			Field		Job Start	Customer	Job Number
Yellowhammer 34C-17HZ 34C-17HZ			Wattenberg		Dec/24/2017	ANADARKO	D8WD-00911
Date	Time 24-hr clock	Treating Pressure PSI	Flow Rate B/M	Density LB/G	Volume BBL	Message	
12/24/2017	06:47:33	25	0.0	0.09	0.0		
12/24/2017	06:48:03	25	0.0	0.09	0.0		
12/24/2017	06:48:33	25	0.0	0.09	0.0		
12/24/2017	06:49:03	25	0.0	0.09	0.0		
12/24/2017	06:49:33	25	0.0	0.09	0.0		
12/24/2017	06:50:03	25	0.0	0.09	0.0		
12/24/2017	06:50:33	25	0.0	0.09	0.0		
12/24/2017	06:51:03	25	0.0	0.09	0.0		
12/24/2017	06:51:33	25	0.0	0.09	0.0		
12/24/2017	06:52:03	25	0.0	0.09	0.0		
12/24/2017	06:52:33	25	0.0	0.09	0.0		
12/24/2017	06:53:03	25	0.0	0.09	0.0		
12/24/2017	06:53:33	25	0.0	0.09	0.0		
12/24/2017	06:54:03	25	0.0	0.09	0.0		
12/24/2017	06:54:33	25	0.0	0.09	0.0		
12/24/2017	06:55:03	25	0.0	0.09	0.0		
12/24/2017	06:55:33	25	0.0	1.61	0.0		
12/24/2017	06:56:03	25	0.0	9.03	0.0		
12/24/2017	06:56:33	25	0.0	9.02	0.0		
12/24/2017	06:57:03	25	0.0	9.01	0.0		
12/24/2017	06:57:33	25	0.0	9.01	0.0		
12/24/2017	06:58:03	25	0.0	8.95	0.0		
12/24/2017	06:58:33	25	0.2	8.95	0.0		
12/24/2017	06:59:03	25	0.0	9.04	0.1		
12/24/2017	06:59:33	25	0.0	9.07	0.1		
12/24/2017	07:00:03	26	0.2	9.05	0.2		
12/24/2017	07:00:33	25	0.0	9.12	0.3		
12/24/2017	07:01:03	25	0.0	0.42	0.3		
12/24/2017	07:01:33	25	0.0	0.26	0.3		
12/24/2017	07:02:03	25	0.0	0.26	0.3		
12/24/2017	07:02:33	26	0.0	0.20	0.3		
12/24/2017	07:03:03	25	0.0	0.21	0.3		
12/24/2017	07:03:33	25	0.0	0.18	0.3		
12/24/2017	07:04:03	25	0.0	0.16	0.3		
12/24/2017	07:04:33	25	0.0	0.16	0.3		
12/24/2017	07:05:03	26	0.0	0.15	0.3		
12/24/2017	07:05:33	26	0.0	0.15	0.3		
12/24/2017	07:06:03	25	0.0	0.15	0.3		
12/24/2017	07:06:33	25	0.0	0.15	0.3		
12/24/2017	07:07:03	25	0.0	0.15	0.3		
12/24/2017	07:07:33	25	0.0	0.15	0.3		
12/24/2017	07:08:03	25	0.0	0.15	0.3		
12/24/2017	07:08:33	25	0.0	0.15	0.3		
12/24/2017	07:09:03	25	0.0	0.15	0.3		
12/24/2017	07:09:33	25	0.0	0.15	0.3		
12/24/2017	07:10:03	25	0.0	0.15	0.3		
12/24/2017	07:10:33	25	0.0	0.15	0.3		
12/24/2017	07:11:03	25	0.0	0.14	0.3		
12/24/2017	07:11:33	25	0.0	0.14	0.3		
12/24/2017	07:12:03	25	0.0	0.14	0.3		
12/24/2017	07:12:33	25	0.0	0.14	0.3		
12/24/2017	07:13:03	25	0.0	0.14	0.3		
12/24/2017	07:13:33	25	0.0	0.14	0.3		
12/24/2017	07:14:03	25	0.0	0.14	0.3		

Well			Field		Job Start		Customer		Job Number	
Yellowhammer 34C-17HZ 34C-17HZ			Wattenberg		Dec/24/2017		ANADARKO		D8WD-00911	
Date	Time 24-hr clock	Treating Pressure PSI		Flow Rate B/M	Density LB/G		Volume BBL		Message	
12/24/2017	07:15:03	25		0.0	0.14		0.3			
12/24/2017	07:15:33	25		0.0	0.14		0.3			
12/24/2017	07:16:03	25		0.0	0.14		0.3			
12/24/2017	07:16:33	26		0.0	0.14		0.3			
12/24/2017	07:17:03	25		0.0	0.14		0.3			
12/24/2017	07:17:33	25		0.0	0.14		0.3			
12/24/2017	07:18:03	25		0.0	0.14		0.3			
12/24/2017	07:18:33	25		0.0	0.14		0.3			
12/24/2017	07:19:03	25		0.0	0.14		0.3			
12/24/2017	07:19:33	25		0.0	0.14		0.3			
12/24/2017	07:20:03	26		0.0	0.14		0.3			
12/24/2017	07:20:33	25		0.0	0.14		0.3			
12/24/2017	07:21:03	26		0.0	0.13		0.3			
12/24/2017	07:21:33	25		0.0	0.13		0.3			
12/24/2017	07:22:03	25		0.0	0.13		0.3			
12/24/2017	07:23:03	25		0.0	0.14		0.3			
12/24/2017	07:23:33	25		0.0	0.14		0.3			
12/24/2017	07:24:03	26		0.0	0.14		0.3			
12/24/2017	07:24:33	25		0.0	0.14		0.3			
12/24/2017	07:25:03	25		0.0	0.14		0.3			
12/24/2017	07:25:33	25		0.0	0.13		0.3			
12/24/2017	07:26:03	25		0.0	0.14		0.3			
12/24/2017	07:26:33	25		0.0	0.13		0.3			
12/24/2017	07:27:03	25		0.0	0.13		0.3			
12/24/2017	07:27:33	25		0.0	0.13		0.3			
12/24/2017	07:28:03	24		0.0	0.13		0.3			
12/24/2017	07:28:33	25		0.0	0.13		0.3			
12/24/2017	07:29:03	25		0.0	0.13		0.3			
12/24/2017	07:29:33	25		0.0	0.14		0.3			
12/24/2017	07:30:03	25		0.0	0.13		0.3			
12/24/2017	07:30:33	25		0.0	0.13		0.3			
12/24/2017	07:31:03	25		0.4	8.56		0.3			
12/24/2017	07:31:33	25		6.8	9.24		2.4			
12/24/2017	07:32:03	25		1.3	8.66		5.4			
12/24/2017	07:32:33	25		0.0	9.04		5.5			
12/24/2017	07:33:03	25		0.0	8.91		5.5			
12/24/2017	07:33:33	25		6.6	9.49		7.7			
12/24/2017	07:34:03	49		6.6	9.51		11.0			
12/24/2017	07:34:33	207		6.6	9.52		14.3			
12/24/2017	07:35:03	73		6.6	9.52		17.6			
12/24/2017	07:35:33	48		6.6	9.51		20.9			
12/24/2017	07:36:03	40		6.6	9.51		24.2			
12/24/2017	07:36:33	35		6.6	9.51		27.5			
12/24/2017	07:37:03	43		6.6	9.52		30.8			
12/24/2017	07:37:33	41		6.6	9.51		34.1			
12/24/2017	07:38:03	38		6.6	9.51		37.4			
12/24/2017	07:38:33	37		6.6	9.51		40.7			
12/24/2017	07:39:03	31		6.6	9.52		44.0			
12/24/2017	07:39:33	32		6.6	9.51		47.3			
12/24/2017	07:40:03	31		6.6	9.51		50.6			
12/24/2017	07:40:33	30		6.6	9.51		53.9			
12/24/2017	07:41:03	30		6.6	9.51		57.2			
12/24/2017	07:41:33	29		6.6	9.51		60.5			
12/24/2017	07:42:03	29		6.6	9.51		63.8			

Well			Field	Job Start		Customer	Job Number	
Yellowhammer 34C-17HZ 34C-17HZ			Wattenberg		Dec/24/2017		ANADARKO	D8WD-00911
Date	Time 24-hr clock	Treating Pressure PSI	Flow Rate B/M	Density LB/G	Volume BBL	Message		
12/24/2017	07:43:03	29	6.6	9.51	70.4			
12/24/2017	07:43:33	12	6.6	9.51	73.7			
12/24/2017	07:44:03	15	20.7	11.14	82.9			
12/24/2017	07:44:33	245	2.5	10.01	86.8			
12/24/2017	07:45:00	416	4.1	9.65	88.4	Water Cl: 200 mg/L		
12/24/2017	07:45:03	274	1.7	9.90	88.6			
12/24/2017	07:45:30	49	1.3	9.32	89.2	Water Temp: 55 deg		
12/24/2017	07:45:33	42	1.2	9.24	89.2			
12/24/2017	07:46:00	15	1.2	9.06	89.8	Loaded lines with 5 bbls fresh water		
12/24/2017	07:46:03	13	1.3	9.07	89.8			
12/24/2017	07:46:33	8	1.3	8.97	90.5			
12/24/2017	07:47:03	310	3.0	10.06	91.3			
12/24/2017	07:47:33	94	0.0	9.00	91.6			
12/24/2017	07:48:03	78	0.0	9.53	91.6			
12/24/2017	07:48:33	1984	0.1	8.94	91.6			
12/24/2017	07:49:03	1862	0.0	8.82	91.6			
12/24/2017	07:49:33	1836	0.0	8.79	91.6			
12/24/2017	07:50:00	3921	0.0	8.79	91.6	Start Pressure Test		
12/24/2017	07:50:03	3909	0.0	8.80	91.6			
12/24/2017	07:50:33	3843	0.0	8.78	91.6			
12/24/2017	07:51:03	3797	0.0	8.74	91.6			
12/24/2017	07:51:33	3762	0.0	8.74	91.6			
12/24/2017	07:52:00	3736	0.0	8.76	91.6	Low 1000 High 4000 psi		
12/24/2017	07:52:03	3731	0.0	8.77	91.6			
12/24/2017	07:52:33	3703	0.0	8.75	91.6			
12/24/2017	07:53:03	3685	0.0	8.74	91.6			
12/24/2017	07:53:33	3667	0.0	8.75	91.6			
12/24/2017	07:54:03	12	0.0	8.75	91.6			
12/24/2017	07:54:33	41	0.0	8.76	91.6			
12/24/2017	07:55:03	43	0.0	8.74	91.7			
12/24/2017	07:55:33	45	0.0	8.76	91.7			
12/24/2017	07:56:03	43	0.0	8.76	91.7			
12/24/2017	07:56:33	43	0.0	8.73	91.7			
12/24/2017	07:57:03	43	0.0	8.76	91.7			
12/24/2017	07:58:03	42	0.0	8.74	91.7			
12/24/2017	07:58:33	42	0.0	8.74	91.7			
12/24/2017	07:59:03	41	0.0	8.74	91.7			
12/24/2017	07:59:33	41	0.0	8.73	91.7			
12/24/2017	08:00:03	42	0.0	8.75	91.7			
12/24/2017	08:00:33	42	0.0	8.74	91.7			
12/24/2017	08:01:03	42	0.0	8.72	91.7			
12/24/2017	08:01:33	42	0.0	8.71	91.7			
12/24/2017	08:02:03	43	0.0	8.71	91.7			
12/24/2017	08:02:33	42	0.0	8.72	91.7			
12/24/2017	08:03:03	43	0.0	8.72	91.7			
12/24/2017	08:03:33	44	0.0	8.72	91.7			
12/24/2017	08:04:03	45	0.0	8.72	91.7			
12/24/2017	08:04:33	45	0.0	8.69	91.7			
12/24/2017	08:05:03	44	0.0	8.68	91.7			
12/24/2017	08:05:33	44	0.0	8.70	91.7			
12/24/2017	08:06:03	43	0.0	8.69	91.7			
12/24/2017	08:06:33	43	0.0	8.70	91.7			
12/24/2017	08:07:03	43	0.0	8.72	91.7			
12/24/2017	08:07:33	43	0.0	8.70	91.7			

Well			Field		Job Start		Customer		Job Number	
Yellowhammer 34C-17HZ 34C-17HZ			Wattenberg		Dec/24/2017		ANADARKO		D8WD-00911	
Date	Time 24-hr clock	Treating Pressure PSI		Flow Rate B/M	Density LB/G		Volume BBL		Message	
12/24/2017	08:08:33	46		0.0	8.72		91.7			
12/24/2017	08:09:03	44		0.0	8.70		91.7			
12/24/2017	08:09:33	45		0.0	8.70		91.7			
12/24/2017	08:10:03	44		0.0	8.67		91.7			
12/24/2017	08:10:33	44		0.0	9.95		91.7			
12/24/2017	08:11:03	44		0.0	9.89		91.7			
12/24/2017	08:11:33	45		0.0	9.43		91.7			
12/24/2017	08:12:03	45		0.0	8.94		91.7			
12/24/2017	08:12:33	44		0.0	9.86		91.7			
12/24/2017	08:13:03	45		0.0	9.83		91.7			
12/24/2017	08:13:33	44		0.0	9.46		91.7			
12/24/2017	08:14:03	44		0.0	9.44		91.7			
12/24/2017	08:14:33	44		0.0	9.09		91.7			
12/24/2017	08:15:03	44		0.0	9.65		91.7			
12/24/2017	08:15:33	44		0.0	10.09		91.7			
12/24/2017	08:16:03	43		0.0	10.17		91.7			
12/24/2017	08:16:33	44		0.0	9.92		91.7			
12/24/2017	08:17:03	44		0.0	9.98		91.7			
12/24/2017	08:17:33	45		0.0	10.06		91.7			
12/24/2017	08:18:03	44		0.0	10.24		91.7			
12/24/2017	08:18:33	44		0.0	10.24		91.7			
12/24/2017	08:19:03	44		0.0	10.22		91.7			
12/24/2017	08:19:33	44		0.0	10.29		91.7			
12/24/2017	08:20:03	44		0.0	10.25		91.7			
12/24/2017	08:20:33	44		0.0	10.04		91.7			
12/24/2017	08:21:03	45		0.0	10.02		91.7			
12/24/2017	08:21:33	45		0.0	10.00		91.7			
12/24/2017	08:22:03	44		0.0	10.41		91.7			
12/24/2017	08:22:33	44		0.0	10.06		91.7			
12/24/2017	08:23:03	45		0.0	9.97		91.7			
12/24/2017	08:23:33	45		0.0	9.85		91.7			
12/24/2017	08:24:03	45		0.0	10.80		91.7			
12/24/2017	08:24:33	45		0.0	10.97		91.7			
12/24/2017	08:25:03	48		0.2	10.52		91.7			
12/24/2017	08:25:33	46		0.1	9.40		91.8			
12/24/2017	08:26:03	46		0.1	9.84		91.9			
12/24/2017	08:26:33	45		0.1	9.79		91.9			
12/24/2017	08:27:03	45		0.1	10.16		92.0			
12/24/2017	08:27:33	45		0.1	10.27		92.0			
12/24/2017	08:28:03	45		0.1	11.02		92.1			
12/24/2017	08:28:33	45		0.1	11.37		92.1			
12/24/2017	08:29:03	45		0.1	11.46		92.2			
12/24/2017	08:29:33	44		0.1	11.48		92.2			
12/24/2017	08:30:03	45		0.2	9.93		92.3			
12/24/2017	08:30:33	45		0.1	9.79		92.4			
12/24/2017	08:31:00	44		0.1	9.77		92.4	Drop Bottom Plug		
12/24/2017	08:31:03	45		0.1	9.77		92.4			
12/24/2017	08:31:33	44		0.2	9.47		92.5			
12/24/2017	08:32:00	45		0.2	9.47		92.5	Start Pumping Spacer		
12/24/2017	08:32:03	45		0.1	9.47		92.6			
12/24/2017	08:33:03	277		2.3	9.47		93.9			
12/24/2017	08:33:33	285		2.2	9.48		95.0			
12/24/2017	08:34:03	284		2.3	9.68		96.1			
12/24/2017	08:34:33	288		2.2	9.87		97.2			

Well			Field	Job Start		Customer	Job Number
Yellowhammer 34C-17HZ 34C-17HZ			Wattenberg	Dec/24/2017		ANADARKO	D8WD-00911
Date	Time 24-hr clock	Treating Pressure PSI	Flow Rate B/M	Density LB/G	Volume BBL	Message	
12/24/2017	08:35:33	286	2.2	10.14	99.5		
12/24/2017	08:36:03	285	2.3	10.25	100.6		
12/24/2017	08:36:33	275	2.3	10.31	101.7		
12/24/2017	08:37:03	428	4.1	10.35	103.3		
12/24/2017	08:37:33	440	4.1	10.41	105.3		
12/24/2017	08:38:03	446	4.1	10.49	107.4		
12/24/2017	08:38:33	442	4.1	10.56	109.5		
12/24/2017	08:39:03	450	4.1	10.64	111.5		
12/24/2017	08:39:33	449	4.1	10.72	113.6		
12/24/2017	08:40:03	451	4.1	10.79	115.6		
12/24/2017	08:40:33	442	4.1	10.84	117.7		
12/24/2017	08:41:03	453	4.1	10.91	119.8		
12/24/2017	08:41:33	435	4.1	10.88	121.8		
12/24/2017	08:42:03	441	4.1	10.84	123.9		
12/24/2017	08:42:33	429	4.1	10.87	126.0		
12/24/2017	08:43:03	436	4.1	10.88	128.0		
12/24/2017	08:43:33	302	4.1	10.89	130.1		
12/24/2017	08:44:03	112	1.0	10.88	131.9		
12/24/2017	08:44:33	93	1.0	10.88	132.4		
12/24/2017	08:45:03	89	1.0	10.88	132.9		
12/24/2017	08:45:33	103	1.0	10.88	133.4		
12/24/2017	08:46:03	102	1.0	10.88	134.0		
12/24/2017	08:46:33	90	1.0	10.79	134.5		
12/24/2017	08:47:03	79	1.0	10.81	135.0		
12/24/2017	08:47:33	67	1.0	10.90	135.5		
12/24/2017	08:48:03	62	1.0	10.85	136.0		
12/24/2017	08:48:33	59	1.1	10.81	136.5		
12/24/2017	08:49:00	56	1.0	10.81	137.0	End Spacer	
12/24/2017	08:49:03	57	1.0	10.81	137.1		
12/24/2017	08:49:10	56	1.0	10.82	137.2	Reset Total, Vol = 40 bbl	
12/24/2017	08:49:33	103	1.0	11.80	137.6		
12/24/2017	08:50:00	105	1.0	11.58	138.0	Start Mixing Lead Slurry	
12/24/2017	08:50:03	104	1.0	11.54	138.1		
12/24/2017	08:50:33	99	1.0	11.38	138.6		
12/24/2017	08:51:03	75	2.2	11.41	139.4		
12/24/2017	08:51:33	76	2.3	11.40	140.5		
12/24/2017	08:52:00	75	2.3	11.20	141.6	PMB of Lead 12 ppg	
12/24/2017	08:52:03	75	2.2	11.18	141.7		
12/24/2017	08:52:33	512	4.8	11.24	143.0		
12/24/2017	08:53:03	639	5.5	11.43	145.8		
12/24/2017	08:53:33	677	5.5	11.57	148.5		
12/24/2017	08:54:03	704	5.5	11.65	151.3		
12/24/2017	08:54:33	742	5.5	11.73	154.0		
12/24/2017	08:55:03	756	5.5	11.79	156.8		
12/24/2017	08:55:33	758	5.4	11.84	159.5		
12/24/2017	08:56:03	746	5.5	11.88	162.3		
12/24/2017	08:56:33	742	5.5	11.91	165.0		
12/24/2017	08:57:03	755	5.5	11.95	167.8		
12/24/2017	08:57:33	749	5.5	11.98	170.5		
12/24/2017	08:58:03	738	5.5	11.90	173.3		
12/24/2017	08:58:33	717	5.5	11.89	176.0		
12/24/2017	08:59:03	725	5.5	11.93	178.8		
12/24/2017	08:59:33	728	5.5	11.96	181.5		
12/24/2017	09:00:03	717	5.5	11.98	184.3		

Well			Field	Job Start		Customer		Job Number	
Yellowhammer 34C-17HZ 34C-17HZ			Wattenberg		Dec/24/2017		ANADARKO		D8WD-00911
Date	Time 24-hr clock	Treating Pressure PSI	Flow Rate B/M	Density LB/G	Volume BBL	Message			
12/24/2017	09:01:03	718	5.5	12.00	189.8				
12/24/2017	09:01:33	723	5.5	12.01	192.5				
12/24/2017	09:02:03	709	5.5	12.02	195.2				
12/24/2017	09:02:33	712	5.5	12.01	198.0				
12/24/2017	09:03:03	697	5.5	12.00	200.7				
12/24/2017	09:03:33	688	5.5	12.02	203.5				
12/24/2017	09:04:03	688	5.5	12.02	206.2				
12/24/2017	09:04:33	665	5.5	12.02	209.0				
12/24/2017	09:05:03	468	4.1	12.03	211.6				
12/24/2017	09:05:33	455	4.1	12.12	213.7				
12/24/2017	09:06:03	430	4.1	12.10	215.7				
12/24/2017	09:06:33	172	2.3	12.01	217.6				
12/24/2017	09:07:03	152	2.3	12.06	218.7				
12/24/2017	09:08:03	95	1.0	12.05	220.1				
12/24/2017	09:08:33	121	1.0	12.02	220.6				
12/24/2017	09:09:03	122	1.0	12.04	221.1				
12/24/2017	09:09:33	118	1.0	12.22	221.6				
12/24/2017	09:10:03	90	1.0	12.19	222.1				
12/24/2017	09:10:33	94	1.0	12.17	222.7				
12/24/2017	09:11:03	142	2.3	12.20	223.6				
12/24/2017	09:11:33	160	2.3	12.25	224.8				
12/24/2017	09:12:00	151	2.2	12.25	225.8	End Lead Slurry			
12/24/2017	09:12:03	147	2.2	12.27	225.9				
12/24/2017	09:12:05	148	2.3	12.28	226.0	Reset Total, Vol = 85 bbl			
12/24/2017	09:12:33	165	2.3	13.33	227.0				
12/24/2017	09:13:00	180	2.2	13.68	228.0	Start Mixing Tail Slurry			
12/24/2017	09:13:03	186	2.2	13.69	228.1				
12/24/2017	09:13:33	409	4.1	13.57	230.0				
12/24/2017	09:14:03	414	4.1	13.71	232.0				
12/24/2017	09:14:33	410	4.1	13.53	234.1				
12/24/2017	09:15:00	591	5.5	13.60	236.2	PMB of 13.5 ppg			
12/24/2017	09:15:03	590	5.5	13.63	236.5				
12/24/2017	09:15:33	595	5.5	13.76	239.2				
12/24/2017	09:16:03	607	5.5	13.42	242.0				
12/24/2017	09:16:33	616	5.5	13.47	244.7				
12/24/2017	09:17:03	577	5.5	13.55	247.5				
12/24/2017	09:17:33	523	5.5	13.53	250.2				
12/24/2017	09:18:03	482	5.5	13.51	253.0				
12/24/2017	09:18:33	485	5.4	13.43	255.7				
12/24/2017	09:19:03	548	5.5	13.51	258.5				
12/24/2017	09:19:33	560	5.4	13.50	261.2				
12/24/2017	09:20:03	89	0.0	12.81	262.7				
12/24/2017	09:20:33	70	0.3	12.82	262.8				
12/24/2017	09:21:03	63	0.2	12.82	262.9				
12/24/2017	09:21:33	61	0.2	12.82	263.0				
12/24/2017	09:22:03	59	0.1	12.83	263.1				
12/24/2017	09:22:33	58	0.0	12.83	263.1				
12/24/2017	09:23:03	57	0.1	12.83	263.1				
12/24/2017	09:23:33	107	0.0	11.83	263.1				
12/24/2017	09:24:00	138	1.8	9.41	263.4	End Tail Slurry			
12/24/2017	09:24:03	130	1.9	9.34	263.5				
12/24/2017	09:24:33	165	3.5	9.27	264.9				
12/24/2017	09:25:03	195	4.1	9.27	267.0				
12/24/2017	09:25:33	165	4.1	9.70	269.0				

Well			Field	Job Start		Customer		Job Number	
Yellowhammer 34C-17HZ 34C-17HZ			Wattenberg		Dec/24/2017		ANADARKO		D8WD-00911
Date	Time 24-hr clock	Treating Pressure PSI	Flow Rate B/M	Density LB/G	Volume BBL	Message			
12/24/2017	09:26:33	180	4.1	8.53	273.1				
12/24/2017	09:27:03	190	4.1	9.57	275.2				
12/24/2017	09:27:33	194	4.2	9.17	277.3				
12/24/2017	09:28:03	193	4.1	8.99	279.3				
12/24/2017	09:28:33	174	4.1	8.52	281.4				
12/24/2017	09:29:03	95	2.6	8.72	282.8				
12/24/2017	09:29:33	159	4.5	8.93	284.2				
12/24/2017	09:30:03	280	5.5	8.74	286.6				
12/24/2017	09:30:33	42	0.0	8.49	287.4				
12/24/2017	09:31:03	42	0.3	8.49	287.5				
12/24/2017	09:31:33	41	0.3	8.49	287.7				
12/24/2017	09:32:03	42	0.1	8.49	287.7				
12/24/2017	09:32:33	42	0.1	8.49	287.8				
12/24/2017	09:33:03	42	0.1	8.49	287.8				
12/24/2017	09:33:33	42	0.1	8.49	287.8				
12/24/2017	09:34:03	41	0.1	8.49	287.9				
12/24/2017	09:34:33	41	0.1	8.48	287.9				
12/24/2017	09:35:00	50	0.1	8.63	287.9	Drop Top Plug			
12/24/2017	09:35:03	61	0.2	8.61	288.0				
12/24/2017	09:35:05	237	1.5	8.61	288.0	Start Displacement			
12/24/2017	09:35:33	257	6.6	8.59	290.0				
12/24/2017	09:36:03	90	2.7	8.70	292.7				
12/24/2017	09:36:33	215	5.6	8.48	295.2				
12/24/2017	09:37:03	227	5.6	8.48	298.0				
12/24/2017	09:37:33	358	5.5	9.28	300.7				
12/24/2017	09:38:03	356	5.5	9.24	303.5				
12/24/2017	09:38:33	522	5.5	9.20	306.3				
12/24/2017	09:39:03	532	6.6	9.13	309.5				
12/24/2017	09:39:33	460	6.6	9.27	312.8				
12/24/2017	09:40:00	457	6.7	9.26	315.8	With OBM 9.6 ppg			
12/24/2017	09:40:03	471	6.6	9.26	316.1				
12/24/2017	09:40:33	455	6.6	9.27	319.4				
12/24/2017	09:41:03	438	6.6	9.27	322.7				
12/24/2017	09:41:33	449	6.6	9.27	326.0				
12/24/2017	09:42:03	423	6.6	9.27	329.3				
12/24/2017	09:43:03	447	6.6	9.28	335.9				
12/24/2017	09:43:33	445	6.6	9.28	339.1				
12/24/2017	09:44:03	458	6.6	9.28	342.4				
12/24/2017	09:44:33	439	6.6	9.28	345.7				
12/24/2017	09:45:03	425	6.6	9.28	349.0				
12/24/2017	09:45:33	408	6.6	9.28	352.3				
12/24/2017	09:46:03	421	6.6	9.28	355.6				
12/24/2017	09:46:33	410	6.6	9.28	358.9				
12/24/2017	09:47:03	409	6.6	9.28	362.2				
12/24/2017	09:47:33	419	6.6	9.28	365.5				
12/24/2017	09:48:03	460	6.6	9.28	368.8				
12/24/2017	09:48:33	427	6.6	9.28	372.1				
12/24/2017	09:49:03	451	6.6	9.28	375.3				
12/24/2017	09:49:33	462	6.6	9.28	378.6				
12/24/2017	09:50:00	495	6.6	9.28	381.6	Good Returns			
12/24/2017	09:50:03	495	6.6	9.28	381.9				
12/24/2017	09:50:33	508	6.7	9.28	385.2				
12/24/2017	09:51:03	529	6.7	9.28	388.5				
12/24/2017	09:51:33	585	6.6	9.28	391.8				

Well			Field		Job Start	Customer	Job Number
Yellowhammer 34C-17HZ 34C-17HZ			Wattenberg		Dec/24/2017	ANADARKO	D8WD-00911
Date	Time 24-hr clock	Treating Pressure PSI	Flow Rate B/M	Density LB/G	Volume BBL	Message	
12/24/2017	09:52:33	640	6.6	9.28	398.4		
12/24/2017	09:53:03	664	6.7	9.28	401.7		
12/24/2017	09:53:33	716	6.7	9.28	405.0		
12/24/2017	09:54:03	731	6.6	9.28	408.3		
12/24/2017	09:54:33	751	6.6	9.28	411.6		
12/24/2017	09:55:03	791	6.6	9.28	414.8		
12/24/2017	09:55:33	818	6.6	9.28	418.1		
12/24/2017	09:56:03	841	6.6	9.28	421.4		
12/24/2017	09:56:33	883	6.6	9.28	424.7		
12/24/2017	09:57:03	887	6.6	9.28	428.0		
12/24/2017	09:57:33	924	6.6	9.28	431.3		
12/24/2017	09:58:03	949	6.6	9.28	434.6		
12/24/2017	09:58:33	954	6.6	9.28	437.9		
12/24/2017	09:59:03	986	6.6	9.28	441.2		
12/24/2017	09:59:33	1000	6.6	9.28	444.5		
12/24/2017	10:00:00	1008	6.6	9.28	447.4	Good Returens	
12/24/2017	10:00:03	1022	6.6	9.28	447.8		
12/24/2017	10:00:33	1034	6.6	9.28	451.0		
12/24/2017	10:01:03	1052	6.7	9.28	454.3		
12/24/2017	10:01:33	1093	6.6	9.28	457.6		
12/24/2017	10:02:03	1105	6.7	9.28	460.9		
12/24/2017	10:02:33	1132	6.7	9.28	464.2		
12/24/2017	10:03:03	1132	6.6	9.28	467.5		
12/24/2017	10:03:33	1145	6.6	9.27	470.8		
12/24/2017	10:04:03	1159	6.7	9.27	474.1		
12/24/2017	10:04:33	1166	6.6	9.22	477.4		
12/24/2017	10:05:03	1199	6.6	9.21	480.7		
12/24/2017	10:05:33	1225	6.6	9.20	484.0		
12/24/2017	10:06:03	1250	6.6	9.18	487.3		
12/24/2017	10:06:33	1266	6.6	9.14	490.6		
12/24/2017	10:07:03	1288	6.7	9.15	493.9		
12/24/2017	10:07:33	1280	6.7	9.15	497.2		
12/24/2017	10:08:03	1104	5.2	9.18	500.4		
12/24/2017	10:08:33	865	3.0	9.18	502.7		
12/24/2017	10:09:03	895	3.0	9.18	504.3		
12/24/2017	10:09:33	940	3.1	9.18	505.8		
12/24/2017	10:10:03	891	3.0	9.18	507.4		
12/24/2017	10:10:33	923	3.1	8.86	508.9		
12/24/2017	10:11:03	963	3.1	8.85	510.5		
12/24/2017	10:11:33	1017	3.0	8.85	512.0		
12/24/2017	10:12:03	1039	3.0	8.61	513.6		
12/24/2017	10:12:33	932	3.0	8.52	515.1		
12/24/2017	10:13:00	904	3.1	8.50	516.5	Bump Top Plug	
12/24/2017	10:13:03	872	3.1	8.50	516.7		
12/24/2017	10:13:05	904	3.1	8.50	516.8	1500 psi	
12/24/2017	10:13:10	889	3.1	8.50	517.0	End Displacement	
12/24/2017	10:13:15	920	3.0	8.50	517.3	Reset Total, Vol = 221 bbl	
12/24/2017	10:13:33	1293	3.1	8.52	518.2		
12/24/2017	10:14:00	1447	0.0	8.64	518.6	Floats Held	
12/24/2017	10:14:03	1448	0.0	8.64	518.6		
12/24/2017	10:14:33	1453	0.0	8.63	518.6		
12/24/2017	10:15:03	1461	0.0	8.63	518.6		
12/24/2017	10:15:33	1467	0.0	8.62	518.6		
12/24/2017	10:16:00	1473	0.0	8.62	518.6	1 bbls back after bleed off	

Well			Field		Job Start	Customer		Job Number	
Yellowhammer 34C-17HZ 34C-17HZ			Wattenberg		Dec/24/2017	ANADARKO		D8WD-00911	
Date	Time 24-hr clock	Treating Pressure PSI	Flow Rate B/M	Density LB/G	Volume BBL	Message			
12/24/2017	10:16:33	57	0.0	8.63	518.6				
12/24/2017	10:17:03	56	0.0	8.62	518.6				
12/24/2017	10:18:03	56	0.0	8.63	518.6				
12/24/2017	10:18:33	56	0.0	8.63	518.6				
12/24/2017	10:19:03	56	0.0	8.63	518.6				
12/24/2017	10:19:33	56	0.0	8.63	518.6				
12/24/2017	10:20:03	56	0.0	8.62	518.6				

Post Job Summary

Average Pump Rates, bbl/min					Volume of Fluid Injected, bbl			
Slurry 4.0	N2	Mud	Maximum Rate 21.6	Total Slurry 112.0	Mud 0.0	Spacer 40.0	N2	
Treating Pressure Summary, psi					Breakdown Fluid			
Maximum 3927	Final 56	Average 335	Bump Plug to 1500	Breakdown	Type	Volume bbl	Density lb/gal	
Avg. N2 Percent %	Designed Slurry Volume 0.0 bbl	Displacement 221.0 bbl	Mix Water Temp degF	Cement Circulated to Surface? <input type="checkbox"/>	Volume bbl			
				Washed Thru Perfs <input type="checkbox"/>	To ft			
Customer or Authorized Representative Sean Giddings			Schlumberger Supervisor Reema Alashgar		Circulation Lost <input type="checkbox"/>	Job Completed <input checked="" type="checkbox"/>		
					-	-		