

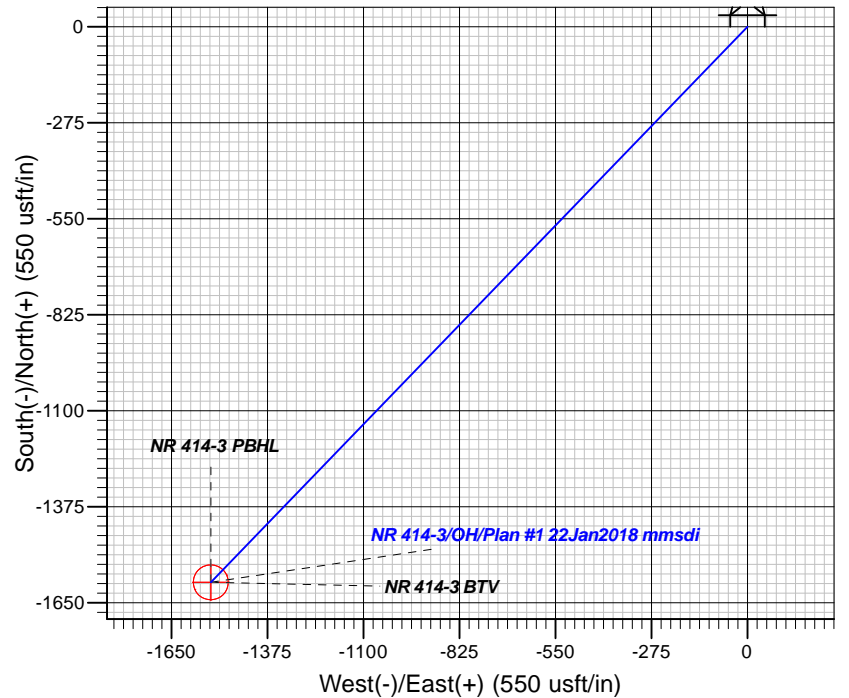
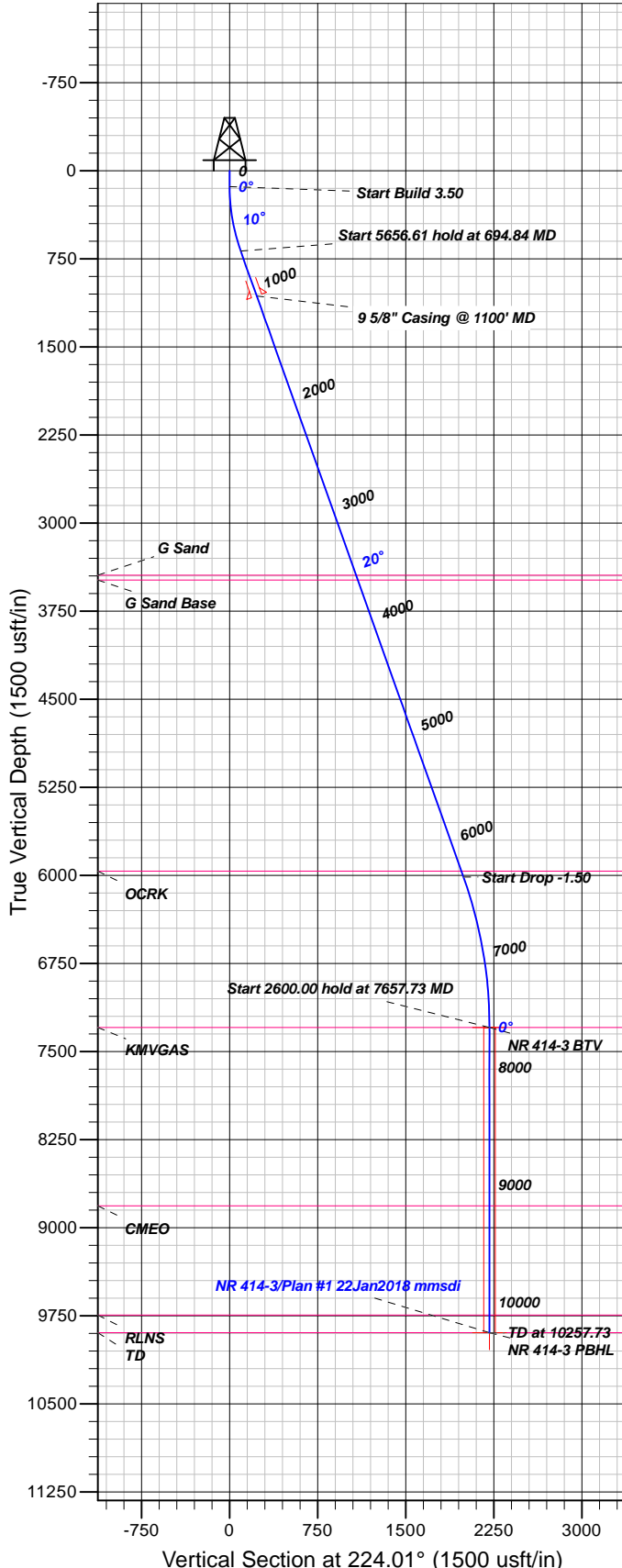


Azimuths to True North  
Magnetic North: 9.48°

Magnetic Field  
Strength: 51615.2snT  
Dip Angle: 65.82°  
Date: 1/17/2018  
Model: HDGM

## Well Details: NR 414-3

+N/-S	+E/-W	Northing	Easting	Latitude	Longitude	Slot
0.00	0.00	1634868.47	2329784.54	39.5524253	-107.8771390	NR 414-3 (A16)



## FORMATION TOP DETAILS

TVDPth	MDPath	Formation
3444.00	3624.50	G Sand
3484.00	3666.96	G Sand Base
5964.00	6299.41	OCRK
7294.00	7657.73	KMGAS
8814.00	9177.73	CMEQ
9744.00	10107.73	RLNS
9894.00	10257.73	TD

Plan: Plan #1 22Jan2018 mmsdi

22:51, February 07 2018  
Created By: Mel Mireles

PROJECT DETAILS: Garfield County, CO NAD83

Geodetic System: US State Plane 1983  
Datum: North American Datum 1983  
Ellipsoid: GRS 1980  
Zone: Colorado Central Zone

System Datum: Mean Sea Level

## CASING DETAILS

TVD	MD	Name	Size
1065.69	1100.00	5/8" Casing @ 1100' MD	9.62

## SECTION DETAILS

Sec	MD	Inc	Azi	TVD	+N/-S	+E/-W	Dleg	TFace	Vsect	Target
1	0.00	0.00	0.00	0.00	0.00	0.00	0.00	0.00	0.00	
2	135.00	0.00	0.00	135.00	0.00	0.00	0.00	0.00	0.00	
3	694.84	19.59	224.01	683.99	-68.18	-65.87	3.50	224.01	94.80	
4	6351.45	19.59	224.01	6013.03	-1432.46	-1383.93	0.00	0.00	1991.79	
5	7657.73	0.00	0.00	7294.00	-1591.54	-1537.63	1.50	180.00	2212.99	NR 414-3 BTV
6	10257.73	0.00	0.00	9894.00	-1591.54	-1537.63	0.00	0.00	2212.99	NR 414-3 PBHL

## DESIGN TARGET DETAILS

Name	TVD	+N/-S	+E/-W	Northing	Easting	Latitude	Longitude	Shape
NR 414-3 BTV	7294.00	-1591.54	-1537.63	1633317.70	2328205.80	39.5480557	-107.8825917	Circle (Radius: 50.00)
- plan hits target center								
NR 414-3 PBHL	9894.00	-1591.54	-1537.63	1633317.70	2328205.80	39.5480557	-107.8825917	Point
- plan hits target center								



# **TEP Rocky Mountain LLC**

**Garfield County, CO NAD83**

**NR 23-3 Pad**

**NR 414-3 - Slot NR 414-3 (A16)**

**OH**

**Plan: Plan #1 22Jan2018 mmsdi**

## **Standard Planning Report**

**07 February, 2018**



<b>Database:</b>	Grand Junction District	<b>Local Co-ordinate Reference:</b>	Well NR 414-3 - Slot NR 414-3 (A16)
<b>Company:</b>	TEP Rocky Mountain LLC	<b>TVD Reference:</b>	GL 6720' & RKB 24' @ 6744.00usft
<b>Project:</b>	Garfield County, CO NAD83	<b>MD Reference:</b>	GL 6720' & RKB 24' @ 6744.00usft
<b>Site:</b>	NR 23-3 Pad	<b>North Reference:</b>	True
<b>Well:</b>	NR 414-3	<b>Survey Calculation Method:</b>	Minimum Curvature
<b>Wellbore:</b>	OH		
<b>Design:</b>	Plan #1 22Jan2018 mmsdi		

<b>Project</b>	Garfield County, CO NAD83		
<b>Map System:</b>	US State Plane 1983	<b>System Datum:</b>	Mean Sea Level
<b>Geo Datum:</b>	North American Datum 1983		
<b>Map Zone:</b>	Colorado Central Zone		

<b>Site</b>	NR 23-3 Pad			
<b>Site Position:</b>		<b>Northing:</b>	1,634,904.55 usft	<b>Latitude:</b> 39.5525224
<b>From:</b> Map		<b>Easting:</b>	2,329,757.66 usft	<b>Longitude:</b> -107.8772377
<b>Position Uncertainty:</b>	0.00 usft	<b>Slot Radius:</b>	13.20 in	<b>Grid Convergence:</b> -1.50 °

<b>Well</b>	NR 414-3 - Slot NR 414-3 (A16)			
<b>Well Position</b>	<b>+N/-S</b>	-35.36 usft	<b>Northing:</b>	1,634,868.47 usft
	<b>+E/-W</b>	27.81 usft	<b>Easting:</b>	2,329,784.54 usft
<b>Position Uncertainty</b>		0.00 usft	<b>Wellhead Elevation:</b>	0.00 usft
			<b>Ground Level:</b>	6,720.00 usft

<b>Wellbore</b>	OH				
<b>Magnetics</b>	<b>Model Name</b>	<b>Sample Date</b>	<b>Declination (°)</b>	<b>Dip Angle (°)</b>	<b>Field Strength (nT)</b>
	HDGM	1/17/2018	9.48	65.82	51,615

<b>Design</b>	Plan #1 22Jan2018 mmsdi			
<b>Audit Notes:</b>				
<b>Version:</b>	<b>Phase:</b>	PLAN	<b>Tie On Depth:</b>	0.00
<b>Vertical Section:</b>	<b>Depth From (TVD) (usft)</b>	<b>+N/-S (usft)</b>	<b>+E/-W (usft)</b>	<b>Direction (°)</b>
	0.00	0.00	0.00	224.01

<b>Plan Sections</b>										
Measured Depth (usft)	Inclination (°)	Azimuth (°)	Vertical Depth (usft)	+N/-S (usft)	+E/-W (usft)	Dogleg Rate (°/100usft)	Build Rate (°/100usft)	Turn Rate (°/100usft)	TFO (°)	Target
0.00	0.00	0.00	0.00	0.00	0.00	0.00	0.00	0.00	0.00	
135.00	0.00	0.00	135.00	0.00	0.00	0.00	0.00	0.00	0.00	
694.84	19.59	224.01	683.99	-68.18	-65.87	3.50	3.50	0.00	224.01	
6,351.45	19.59	224.01	6,013.03	-1,432.46	-1,383.93	0.00	0.00	0.00	0.00	
7,657.73	0.00	0.00	7,294.00	-1,591.54	-1,537.63	1.50	-1.50	0.00	180.00	NR 414-3 BTV
10,257.73	0.00	0.00	9,894.00	-1,591.54	-1,537.63	0.00	0.00	0.00	0.00	NR 414-3 PBHL

<b>Database:</b>	Grand Junction District	<b>Local Co-ordinate Reference:</b>	Well NR 414-3 - Slot NR 414-3 (A16)
<b>Company:</b>	TEP Rocky Mountain LLC	<b>TVD Reference:</b>	GL 6720' & RKB 24' @ 6744.00usft
<b>Project:</b>	Garfield County, CO NAD83	<b>MD Reference:</b>	GL 6720' & RKB 24' @ 6744.00usft
<b>Site:</b>	NR 23-3 Pad	<b>North Reference:</b>	True
<b>Well:</b>	NR 414-3	<b>Survey Calculation Method:</b>	Minimum Curvature
<b>Wellbore:</b>	OH		
<b>Design:</b>	Plan #1 22Jan2018 mmsdi		

Planned Survey									
Measured Depth (usft)	Inclination (°)	Azimuth (°)	Vertical Depth (usft)	+N/-S (usft)	+E/-W (usft)	Vertical Section (usft)	Dogleg Rate (°/100usft)	Build Rate (°/100usft)	Turn Rate (°/100usft)
0.00	0.00	0.00	0.00	0.00	0.00	0.00	0.00	0.00	0.00
100.00	0.00	0.00	100.00	0.00	0.00	0.00	0.00	0.00	0.00
135.00	0.00	0.00	135.00	0.00	0.00	0.00	0.00	0.00	0.00
<b>Start Build 3.50</b>									
200.00	2.28	224.01	199.98	-0.93	-0.90	1.29	3.50	3.50	0.00
300.00	5.78	224.01	299.72	-5.98	-5.77	8.31	3.50	3.50	0.00
400.00	9.28	224.01	398.84	-15.39	-14.87	21.40	3.50	3.50	0.00
500.00	12.78	224.01	496.98	-29.14	-28.16	40.52	3.50	3.50	0.00
600.00	16.28	224.01	593.77	-47.18	-45.58	65.60	3.50	3.50	0.00
694.84	19.59	224.01	683.99	-68.18	-65.87	94.80	3.50	3.50	0.00
<b>Start 5656.61 hold at 694.84 MD</b>									
700.00	19.59	224.01	688.85	-69.42	-67.07	96.53	0.00	0.00	0.00
800.00	19.59	224.01	783.06	-93.54	-90.37	130.07	0.00	0.00	0.00
900.00	19.59	224.01	877.27	-117.66	-113.67	163.60	0.00	0.00	0.00
1,000.00	19.59	224.01	971.48	-141.78	-136.97	197.14	0.00	0.00	0.00
1,100.00	19.59	224.01	1,065.69	-165.90	-160.28	230.67	0.00	0.00	0.00
<b>9 5/8" Casing @ 1100' MD</b>									
1,200.00	19.59	224.01	1,159.90	-190.02	-183.58	264.21	0.00	0.00	0.00
1,300.00	19.59	224.01	1,254.11	-214.13	-206.88	297.74	0.00	0.00	0.00
1,400.00	19.59	224.01	1,348.32	-238.25	-230.18	331.28	0.00	0.00	0.00
1,500.00	19.59	224.01	1,442.52	-262.37	-253.48	364.82	0.00	0.00	0.00
1,600.00	19.59	224.01	1,536.73	-286.49	-276.78	398.35	0.00	0.00	0.00
1,700.00	19.59	224.01	1,630.94	-310.61	-300.08	431.89	0.00	0.00	0.00
1,800.00	19.59	224.01	1,725.15	-334.73	-323.39	465.42	0.00	0.00	0.00
1,900.00	19.59	224.01	1,819.36	-358.84	-346.69	498.96	0.00	0.00	0.00
2,000.00	19.59	224.01	1,913.57	-382.96	-369.99	532.50	0.00	0.00	0.00
2,100.00	19.59	224.01	2,007.78	-407.08	-393.29	566.03	0.00	0.00	0.00
2,200.00	19.59	224.01	2,101.99	-431.20	-416.59	599.57	0.00	0.00	0.00
2,300.00	19.59	224.01	2,196.20	-455.32	-439.89	633.10	0.00	0.00	0.00
2,400.00	19.59	224.01	2,290.41	-479.44	-463.19	666.64	0.00	0.00	0.00
2,500.00	19.59	224.01	2,384.62	-503.55	-486.50	700.17	0.00	0.00	0.00
2,600.00	19.59	224.01	2,478.82	-527.67	-509.80	733.71	0.00	0.00	0.00
2,700.00	19.59	224.01	2,573.03	-551.79	-533.10	767.25	0.00	0.00	0.00
2,800.00	19.59	224.01	2,667.24	-575.91	-556.40	800.78	0.00	0.00	0.00
2,900.00	19.59	224.01	2,761.45	-600.03	-579.70	834.32	0.00	0.00	0.00
3,000.00	19.59	224.01	2,855.66	-624.15	-603.00	867.85	0.00	0.00	0.00
3,100.00	19.59	224.01	2,949.87	-648.27	-626.30	901.39	0.00	0.00	0.00
3,200.00	19.59	224.01	3,044.08	-672.38	-649.60	934.93	0.00	0.00	0.00
3,300.00	19.59	224.01	3,138.29	-696.50	-672.91	968.46	0.00	0.00	0.00
3,400.00	19.59	224.01	3,232.50	-720.62	-696.21	1,002.00	0.00	0.00	0.00
3,500.00	19.59	224.01	3,326.71	-744.74	-719.51	1,035.53	0.00	0.00	0.00
3,600.00	19.59	224.01	3,420.92	-768.86	-742.81	1,069.07	0.00	0.00	0.00
3,624.50	19.59	224.01	3,444.00	-774.77	-748.52	1,077.29	0.00	0.00	0.00
<b>G Sand</b>									
3,666.96	19.59	224.01	3,484.00	-785.01	-758.41	1,091.53	0.00	0.00	0.00
<b>G Sand Base</b>									
3,700.00	19.59	224.01	3,515.12	-792.98	-766.11	1,102.60	0.00	0.00	0.00
3,800.00	19.59	224.01	3,609.33	-817.09	-789.41	1,136.14	0.00	0.00	0.00
3,900.00	19.59	224.01	3,703.54	-841.21	-812.71	1,169.68	0.00	0.00	0.00
4,000.00	19.59	224.01	3,797.75	-865.33	-836.02	1,203.21	0.00	0.00	0.00
4,100.00	19.59	224.01	3,891.96	-889.45	-859.32	1,236.75	0.00	0.00	0.00
4,200.00	19.59	224.01	3,986.17	-913.57	-882.62	1,270.28	0.00	0.00	0.00
4,300.00	19.59	224.01	4,080.38	-937.69	-905.92	1,303.82	0.00	0.00	0.00
4,400.00	19.59	224.01	4,174.59	-961.81	-929.22	1,337.36	0.00	0.00	0.00

<b>Database:</b>	Grand Junction District	<b>Local Co-ordinate Reference:</b>	Well NR 414-3 - Slot NR 414-3 (A16)
<b>Company:</b>	TEP Rocky Mountain LLC	<b>TVD Reference:</b>	GL 6720' & RKB 24' @ 6744.00usft
<b>Project:</b>	Garfield County, CO NAD83	<b>MD Reference:</b>	GL 6720' & RKB 24' @ 6744.00usft
<b>Site:</b>	NR 23-3 Pad	<b>North Reference:</b>	True
<b>Well:</b>	NR 414-3	<b>Survey Calculation Method:</b>	Minimum Curvature
<b>Wellbore:</b>	OH		
<b>Design:</b>	Plan #1 22Jan2018 mmsdi		

Planned Survey									
Measured Depth (usft)	Inclination (°)	Azimuth (°)	Vertical Depth (usft)	+N/-S (usft)	+E/-W (usft)	Vertical Section (usft)	Dogleg Rate (°/100usft)	Build Rate (°/100usft)	Turn Rate (°/100usft)
4,500.00	19.59	224.01	4,268.80	-985.92	-952.52	1,370.89	0.00	0.00	0.00
4,600.00	19.59	224.01	4,363.01	-1,010.04	-975.82	1,404.43	0.00	0.00	0.00
4,700.00	19.59	224.01	4,457.21	-1,034.16	-999.12	1,437.96	0.00	0.00	0.00
4,800.00	19.59	224.01	4,551.42	-1,058.28	-1,022.43	1,471.50	0.00	0.00	0.00
4,900.00	19.59	224.01	4,645.63	-1,082.40	-1,045.73	1,505.03	0.00	0.00	0.00
5,000.00	19.59	224.01	4,739.84	-1,106.52	-1,069.03	1,538.57	0.00	0.00	0.00
5,100.00	19.59	224.01	4,834.05	-1,130.63	-1,092.33	1,572.11	0.00	0.00	0.00
5,200.00	19.59	224.01	4,928.26	-1,154.75	-1,115.63	1,605.64	0.00	0.00	0.00
5,300.00	19.59	224.01	5,022.47	-1,178.87	-1,138.93	1,639.18	0.00	0.00	0.00
5,400.00	19.59	224.01	5,116.68	-1,202.99	-1,162.23	1,672.71	0.00	0.00	0.00
5,500.00	19.59	224.01	5,210.89	-1,227.11	-1,185.54	1,706.25	0.00	0.00	0.00
5,600.00	19.59	224.01	5,305.10	-1,251.23	-1,208.84	1,739.79	0.00	0.00	0.00
5,700.00	19.59	224.01	5,399.31	-1,275.34	-1,232.14	1,773.32	0.00	0.00	0.00
5,800.00	19.59	224.01	5,493.51	-1,299.46	-1,255.44	1,806.86	0.00	0.00	0.00
5,900.00	19.59	224.01	5,587.72	-1,323.58	-1,278.74	1,840.39	0.00	0.00	0.00
6,000.00	19.59	224.01	5,681.93	-1,347.70	-1,302.04	1,873.93	0.00	0.00	0.00
6,100.00	19.59	224.01	5,776.14	-1,371.82	-1,325.34	1,907.46	0.00	0.00	0.00
6,200.00	19.59	224.01	5,870.35	-1,395.94	-1,348.64	1,941.00	0.00	0.00	0.00
6,299.41	19.59	224.01	5,964.00	-1,419.91	-1,371.81	1,974.34	0.00	0.00	0.00
<b>OCRK</b>									
6,300.00	19.59	224.01	5,964.56	-1,420.06	-1,371.95	1,974.54	0.00	0.00	0.00
6,351.45	19.59	224.01	6,013.03	-1,432.46	-1,383.93	1,991.79	0.00	0.00	0.00
<b>Start Drop -1.50</b>									
6,400.00	18.87	224.01	6,058.87	-1,443.96	-1,395.05	2,007.78	1.50	-1.50	0.00
6,500.00	17.37	224.01	6,153.91	-1,466.33	-1,416.65	2,038.87	1.50	-1.50	0.00
6,600.00	15.87	224.01	6,249.73	-1,486.89	-1,436.52	2,067.47	1.50	-1.50	0.00
6,700.00	14.37	224.01	6,346.27	-1,505.65	-1,454.64	2,093.55	1.50	-1.50	0.00
6,800.00	12.87	224.01	6,443.46	-1,522.58	-1,470.99	2,117.09	1.50	-1.50	0.00
6,900.00	11.37	224.01	6,541.23	-1,537.67	-1,485.58	2,138.07	1.50	-1.50	0.00
7,000.00	9.87	224.01	6,639.51	-1,550.92	-1,498.38	2,156.50	1.50	-1.50	0.00
7,100.00	8.37	224.01	6,738.25	-1,562.31	-1,509.38	2,172.34	1.50	-1.50	0.00
7,200.00	6.87	224.01	6,837.36	-1,571.84	-1,518.59	2,185.59	1.50	-1.50	0.00
7,300.00	5.37	224.01	6,936.79	-1,579.51	-1,525.99	2,196.25	1.50	-1.50	0.00
7,400.00	3.87	224.01	7,036.46	-1,585.29	-1,531.59	2,204.29	1.50	-1.50	0.00
7,500.00	2.37	224.01	7,136.31	-1,589.20	-1,535.36	2,209.73	1.50	-1.50	0.00
7,600.00	0.87	224.01	7,236.27	-1,591.23	-1,537.32	2,212.55	1.50	-1.50	0.00
7,657.73	0.00	0.00	7,294.00	-1,591.54	-1,537.63	2,212.99	1.50	-1.50	0.00
<b>Start 2600.00 hold at 7657.73 MD - KMGAS - NR 414-3 BTV</b>									
7,700.00	0.00	0.00	7,336.27	-1,591.54	-1,537.63	2,212.99	0.00	0.00	0.00
7,800.00	0.00	0.00	7,436.27	-1,591.54	-1,537.63	2,212.99	0.00	0.00	0.00
7,900.00	0.00	0.00	7,536.27	-1,591.54	-1,537.63	2,212.99	0.00	0.00	0.00
8,000.00	0.00	0.00	7,636.27	-1,591.54	-1,537.63	2,212.99	0.00	0.00	0.00
8,100.00	0.00	0.00	7,736.27	-1,591.54	-1,537.63	2,212.99	0.00	0.00	0.00
8,200.00	0.00	0.00	7,836.27	-1,591.54	-1,537.63	2,212.99	0.00	0.00	0.00
8,300.00	0.00	0.00	7,936.27	-1,591.54	-1,537.63	2,212.99	0.00	0.00	0.00
8,400.00	0.00	0.00	8,036.27	-1,591.54	-1,537.63	2,212.99	0.00	0.00	0.00
8,500.00	0.00	0.00	8,136.27	-1,591.54	-1,537.63	2,212.99	0.00	0.00	0.00
8,600.00	0.00	0.00	8,236.27	-1,591.54	-1,537.63	2,212.99	0.00	0.00	0.00
8,700.00	0.00	0.00	8,336.27	-1,591.54	-1,537.63	2,212.99	0.00	0.00	0.00
8,800.00	0.00	0.00	8,436.27	-1,591.54	-1,537.63	2,212.99	0.00	0.00	0.00
8,900.00	0.00	0.00	8,536.27	-1,591.54	-1,537.63	2,212.99	0.00	0.00	0.00
9,000.00	0.00	0.00	8,636.27	-1,591.54	-1,537.63	2,212.99	0.00	0.00	0.00
9,100.00	0.00	0.00	8,736.27	-1,591.54	-1,537.63	2,212.99	0.00	0.00	0.00

<b>Database:</b>	Grand Junction District	<b>Local Co-ordinate Reference:</b>	Well NR 414-3 - Slot NR 414-3 (A16)
<b>Company:</b>	TEP Rocky Mountain LLC	<b>TVD Reference:</b>	GL 6720' & RKB 24' @ 6744.00usft
<b>Project:</b>	Garfield County, CO NAD83	<b>MD Reference:</b>	GL 6720' & RKB 24' @ 6744.00usft
<b>Site:</b>	NR 23-3 Pad	<b>North Reference:</b>	True
<b>Well:</b>	NR 414-3	<b>Survey Calculation Method:</b>	Minimum Curvature
<b>Wellbore:</b>	OH		
<b>Design:</b>	Plan #1 22Jan2018 mmsdi		

Planned Survey									
Measured Depth (usft)	Inclination (°)	Azimuth (°)	Vertical Depth (usft)	+N/-S (usft)	+E/-W (usft)	Vertical Section (usft)	Dogleg Rate (°/100usft)	Build Rate (°/100usft)	Turn Rate (°/100usft)
9,177.73	0.00	0.00	8,814.00	-1,591.54	-1,537.63	2,212.99	0.00	0.00	0.00
<b>CMEO</b>									
9,200.00	0.00	0.00	8,836.27	-1,591.54	-1,537.63	2,212.99	0.00	0.00	0.00
9,300.00	0.00	0.00	8,936.27	-1,591.54	-1,537.63	2,212.99	0.00	0.00	0.00
9,400.00	0.00	0.00	9,036.27	-1,591.54	-1,537.63	2,212.99	0.00	0.00	0.00
9,500.00	0.00	0.00	9,136.27	-1,591.54	-1,537.63	2,212.99	0.00	0.00	0.00
9,600.00	0.00	0.00	9,236.27	-1,591.54	-1,537.63	2,212.99	0.00	0.00	0.00
9,700.00	0.00	0.00	9,336.27	-1,591.54	-1,537.63	2,212.99	0.00	0.00	0.00
9,800.00	0.00	0.00	9,436.27	-1,591.54	-1,537.63	2,212.99	0.00	0.00	0.00
9,900.00	0.00	0.00	9,536.27	-1,591.54	-1,537.63	2,212.99	0.00	0.00	0.00
10,000.00	0.00	0.00	9,636.27	-1,591.54	-1,537.63	2,212.99	0.00	0.00	0.00
10,100.00	0.00	0.00	9,736.27	-1,591.54	-1,537.63	2,212.99	0.00	0.00	0.00
10,107.73	0.00	0.00	9,744.00	-1,591.54	-1,537.63	2,212.99	0.00	0.00	0.00
<b>RLNS</b>									
10,200.00	0.00	0.00	9,836.27	-1,591.54	-1,537.63	2,212.99	0.00	0.00	0.00
10,257.73	0.00	0.00	9,894.00	-1,591.54	-1,537.63	2,212.99	0.00	0.00	0.00
<b>TD at 10257.73 - TD - NR 414-3 PBHL</b>									

Design Targets									
Target Name	Dip Angle (°)	Dip Dir. (°)	TVD (usft)	+N/-S (usft)	+E/-W (usft)	Northing (usft)	Easting (usft)	Latitude	Longitude
- hit/miss target									
- Shape									
NR 414-3 BTV	0.00	0.00	7,294.00	-1,591.54	-1,537.63	1,633,317.70	2,328,205.80	39.5480557	-107.8825917
- plan hits target center									
- Circle (radius 50.00)									
NR 414-3 PBHL	0.00	0.00	9,894.00	-1,591.54	-1,537.63	1,633,317.70	2,328,205.80	39.5480557	-107.8825917
- plan hits target center									
- Point									

Casing Points				
Measured Depth (usft)	Vertical Depth (usft)	Name	Casing Diameter (in)	Hole Diameter (in)
1,100.00	1,065.69	9 5/8" Casing @ 1100' MD	9.62	13.50

Formations					
Measured Depth (usft)	Vertical Depth (usft)	Name	Lithology	Dip (°)	Dip Direction (°)
3,624.50	3,444.00	G Sand		0.00	0.00
3,666.96	3,484.00	G Sand Base		0.00	0.00
6,299.41	5,964.00	OCRK		0.00	0.00
7,657.73	7,294.00	KMVGAS		0.00	0.00
9,177.73	8,814.00	CMEO		0.00	0.00
10,107.73	9,744.00	RLNS		0.00	0.00
10,257.73	9,894.00	TD		0.00	0.00

<b>Database:</b>	Grand Junction District	<b>Local Co-ordinate Reference:</b>	Well NR 414-3 - Slot NR 414-3 (A16)
<b>Company:</b>	TEP Rocky Mountain LLC	<b>TVD Reference:</b>	GL 6720' & RKB 24' @ 6744.00usft
<b>Project:</b>	Garfield County, CO NAD83	<b>MD Reference:</b>	GL 6720' & RKB 24' @ 6744.00usft
<b>Site:</b>	NR 23-3 Pad	<b>North Reference:</b>	True
<b>Well:</b>	NR 414-3	<b>Survey Calculation Method:</b>	Minimum Curvature
<b>Wellbore:</b>	OH		
<b>Design:</b>	Plan #1 22Jan2018 mmsdi		

Plan Annotations				
Measured Depth (usft)	Vertical Depth (usft)	Local Coordinates		Comment
		+N/-S (usft)	+E/-W (usft)	
135.00	135.00	0.00	0.00	Start Build 3.50
694.84	683.99	-68.18	-65.87	Start 5656.61 hold at 694.84 MD
6,351.45	6,013.03	-1,432.46	-1,383.93	Start Drop -1.50
7,657.73	7,294.00	-1,591.54	-1,537.63	Start 2600.00 hold at 7657.73 MD
10,257.73	9,894.00	-1,591.54	-1,537.63	TD at 10257.73