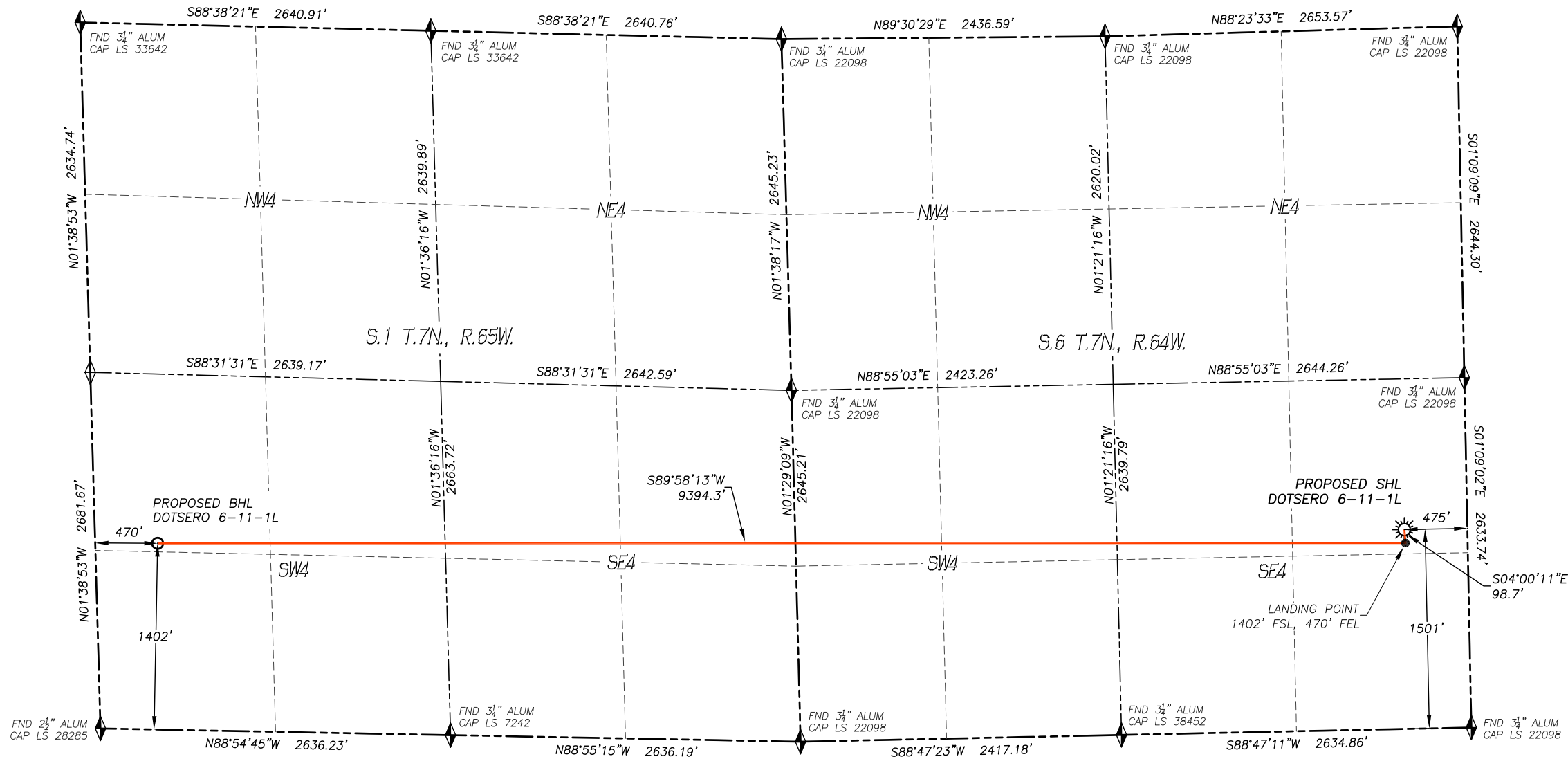


WELL LOCATION CERTIFICATE
DOTSERO 6-11-1L
SECTION 6, TOWNSHIP 7 NORTH, RANGE 64 WEST OF THE 6TH P.M.



IN ACCORDANCE WITH A REQUEST FROM CONFLUENCE RESOURCES, DALEY LAND SURVEYING, INC. HAS DETERMINED THE SURFACE LOCATION OF THE DOTSERO 6-11-1L WELL TO BE 1501' FSL, 475' FEL, AS MEASURED AT NINETY (90) DEGREES FROM THE SECTION LINES OF SECTION 6, TOWNSHIP 7 NORTH, RANGE 64 WEST, AND THE BOTTOM HOLE LOCATION TO BE 1402' FSL, 470' FWL, AS MEASURED AT NINETY (90) DEGREES FROM THE SECTION LINES OF SECTION 1, TOWNSHIP 7 NORTH, RANGE 65 WEST, OF THE 6TH PRINCIPAL MERIDIAN, WELD COUNTY, COLORADO.

I HEREBY STATE THAT THIS WELL LOCATION CERTIFICATE WAS PREPARED BY ME OR UNDER MY DIRECT SUPERVISION, THAT THE WORK WAS COMPLETED ON 2/3/2018 FOR AND ON BEHALF OF CONFLUENCE RESOURCES, AND THAT THIS MAP DOES NOT REPRESENT A BOUNDARY SURVEY, IT IS NOT A LAND SURVEY PLAT OR AN IMPROVEMENT SURVEY PLAT AND IT IS NOT TO BE RELIED UPON FOR THE ESTABLISHMENT OF FENCE, BUILDING OR OTHER FUTURE IMPROVEMENT LINES.

- NOTES:**
- BEARINGS FOR THIS MAP ARE ASSUMED AND BASED UPON GPS OBSERVATIONS MADE BETWEEN MONUMENTS LOCATED AT THE NORTHEAST CORNER AND EAST QUARTER CORNER OF SECTION 6, T.7N., R.64W.
 - HORIZONTAL DATUM IS NAD83.
 - VERTICAL DATUM IS NAVD88 AND ORIGINATES FROM THE LOCAL C.O.R.S. NETWORK, UTILIZING THE GEOID12A MODEL.
 - SEE LOCATION DRAWING FOR VISIBLE IMPROVEMENTS WITHIN 500' OF PROPOSED DISTURBED AREA.
 - SURFACE USE: PASTURE/RANGELAND.
 - INST. OPERATOR: KYLE DALEY

NEAREST CULTURAL ITEMS:	
BUILDING:	3599'± SE
BUILDING UNIT:	3569'± SE
HIGH OCC. BLD. UNIT:	5280'±
DES. OUTSIDE ACTIVITY AREA:	5280'±
PUBLIC ROAD:	466'± E
ABOVE GROUND UTILITY:	449'± E
RAILROAD:	5280'±
PROPERTY LINE:	475'± E

NAD 83 LATITUDE AND LONGITUDE	
SURFACE LOCATION:	
LATITUDE:	N40.59876°
LONGITUDE:	W104.58455°
ELEV.:	4989'
PDOP.:	1.1
QTR/QTR:	NE4/SE4
LANDING POINT:	
LATITUDE:	N40.59849°
LONGITUDE:	W104.58453°
BOTTOM HOLE:	
LATITUDE:	N40.59874°
LONGITUDE:	W104.61835°

- LEGEND**
- FOUND MONUMENT AS DESCRIBED
 - CALCULATED POSITION
 - PROPOSED WELL
 - EXISTING WELL
 - BOTTOM HOLE

