

Weld County, Colorado
Section 06-T07N-R64W
Dotsero 6-10-02L
plan1

Section Details

Sec	MD	Inc	Azi	TVD	+N/-S	+E/-W	Dleg	Vsect	Annotation
1	0.00	0.00	0.00	0.00	0.00	0.00	0.00	0.00	
2	3000.00	0.00	0.00	3000.00	0.00	0.00	0.00	0.00	KOP Begin 2°/100' build
3	3546.55	10.93	66.63	3543.24	20.62	47.71	2.00	-46.72	Begin 10.93° tangent
4	6522.28	10.93	66.63	6464.98	244.44	565.70	0.00	-553.88	Begin 10°/100' build/turn
5	7521.93	90.00	270.77	7135.00	304.95	2.15	10.00	11.85	Begin 90.00° lateral
6	16912.47	90.00	270.77	7135.00	431.40	-9387.54	0.00	9397.44	PBHL/TD 16912.47 MD/7135.00 TVD

DESIGN TARGET DETAILS

Name	TVD	+N/-S	+E/-W	Northing	Easting	Latitude	Longitude
Dotsero 6-010-02L LP 3436 FNL 470 FEL	7135.00	304.95	2.15	14745383.59	1755741.30	40.59967712	-104.58454473
Dotsero 6-010-02L PBHL 3436 FNL 470 FWL	7135.00	431.40	-9387.54	14745465.73	1746351.14	40.60001938	-104.61837061

Dotsero 6-10-02L			
Surf loc: 1526 FSL 475 FEL Section 06-T07N-R64W			
NAD83 Colorado - HARN			
Universal Transverse Mercator (US Survey Feet)			
Zone 13N (108 W to 102 W)			
RKB=4995+24 @ 5019.00ft			
Northing	Easting	Latitude	Longitude
14745078.63	1755740.59	40.59883976	-104.58455247

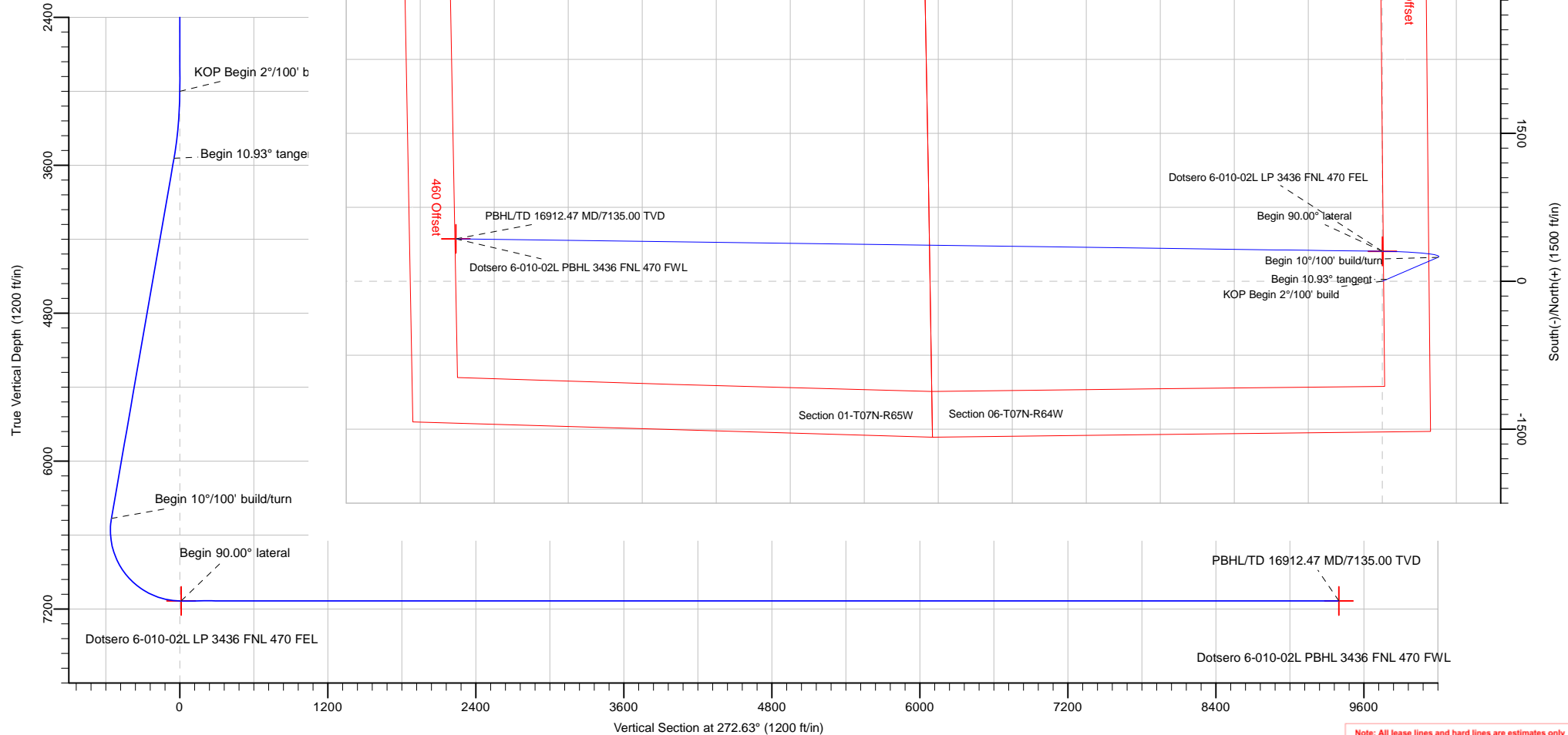


Azimuths to True North
Magnetic North: 7.98°

Magnetic Field
Strength: 52359.2snT
Dip Angle: 66.98°
Date: 2/19/2018
Model: HDGM

Azimuth Corrections:

To convert a Magnetic Direction to a True Direction, Add 7.98° East



Database:	DB_Jul2216dt_v14	Local Co-ordinate Reference:	Well Dotsero 6-10-02L
Company:	Confluence Resources	TVD Reference:	RKB=4995+24 @ 5019.00ft
Project:	Weld County, Colorado	MD Reference:	RKB=4995+24 @ 5019.00ft
Site:	Section 06-T07N-R64W	North Reference:	True
Well:	Dotsero 6-10-02L	Survey Calculation Method:	Minimum Curvature
Wellbore:	Original Hole		
Design:	plan1		

Project	Weld County, Colorado		
Map System:	Universal Transverse Mercator (US Survey Feet)	System Datum:	Mean Sea Level
Geo Datum:	NAD83 Colorado - HARN		
Map Zone:	Zone 13N (108 W to 102 W)		

Site		Section 06-T07N-R64W			
Site Position:		Northing:	14,746,184.54 usft	Latitude:	40.60187654
From:	Map	Easting:	1,755,730.03 usft	Longitude:	-104.58457171
Position Uncertainty:	0.00 ft	Slot Radius:	13-3/16 "	Grid Convergence:	0.27 °

Well	Dotsero 6-10-02L, Surf loc: 1526 FSL 475 FEL Section 06-T07N-R64W					
Well Position	+N/-S	-1,105.95 ft	Northing:	14,745,078.63 usft	Latitude:	40.59883975
	+E/-W	5.34 ft	Easting:	1,755,740.59 usft	Longitude:	-104.58455247
Position Uncertainty		0.00 ft	Wellhead Elevation:		Ground Level:	4,995.00 ft

Wellbore	Original Hole				
Magnetics	Model Name	Sample Date	Declination (°)	Dip Angle (°)	Field Strength (nT)
	HDGM	2/19/2018	7.98	66.98	52,359.20000000

Design	plan1			
Audit Notes:				
Version:	Phase:	PLAN	Tie On Depth:	0.00
Vertical Section:	Depth From (TVD) (ft)	+N/-S (ft)	+E/-W (ft)	Direction (°)
	0.00	0.00	0.00	272.63

Plan Survey Tool Program	Date	2/19/2018		
Depth From (ft)	Depth To (ft)	Survey (Wellbore)	Tool Name	Remarks
1	0.00	16,912.47	plan1 (Original Hole)	

Plan Sections										
Measured Depth (ft)	Inclination (°)	Azimuth (°)	Vertical Depth (ft)	+N/-S (ft)	+E/-W (ft)	Dogleg Rate (°/100ft)	Build Rate (°/100ft)	Turn Rate (°/100ft)	TFO (°)	Target
0.00	0.00	0.00	0.00	0.00	0.00	0.00	0.00	0.00	0.00	
3,000.00	0.00	0.00	3,000.00	0.00	0.00	0.00	0.00	0.00	0.00	
3,546.55	10.93	66.63	3,543.24	20.62	47.71	2.00	2.00	0.00	66.63	
6,522.28	10.93	66.63	6,464.98	244.44	565.70	0.00	0.00	0.00	0.00	
7,521.93	90.00	270.77	7,135.00	304.95	2.15	10.00	7.91	-15.59	-155.47	Dotsero 6-010-02L LF
16,912.47	90.00	270.77	7,135.00	431.40	-9,387.54	0.00	0.00	0.00	0.00	Dotsero 6-010-02L PE

Database:	DB_Jul2216dt_v14	Local Co-ordinate Reference:	Well Dotsero 6-10-02L
Company:	Confluence Resources	TVD Reference:	RKB=4995+24 @ 5019.00ft
Project:	Weld County, Colorado	MD Reference:	RKB=4995+24 @ 5019.00ft
Site:	Section 06-T07N-R64W	North Reference:	True
Well:	Dotsero 6-10-02L	Survey Calculation Method:	Minimum Curvature
Wellbore:	Original Hole		
Design:	plan1		

Planned Survey									
Measured Depth (ft)	Inclination (°)	Azimuth (°)	Vertical Depth (ft)	+N/-S (ft)	+E/-W (ft)	Vertical Section (ft)	Dogleg Rate (°/100ft)	Build Rate (°/100ft)	Turn Rate (°/100ft)
0.00	0.00	0.00	0.00	0.00	0.00	0.00	0.00	0.00	0.00
100.00	0.00	0.00	100.00	0.00	0.00	0.00	0.00	0.00	0.00
200.00	0.00	0.00	200.00	0.00	0.00	0.00	0.00	0.00	0.00
300.00	0.00	0.00	300.00	0.00	0.00	0.00	0.00	0.00	0.00
400.00	0.00	0.00	400.00	0.00	0.00	0.00	0.00	0.00	0.00
500.00	0.00	0.00	500.00	0.00	0.00	0.00	0.00	0.00	0.00
600.00	0.00	0.00	600.00	0.00	0.00	0.00	0.00	0.00	0.00
700.00	0.00	0.00	700.00	0.00	0.00	0.00	0.00	0.00	0.00
800.00	0.00	0.00	800.00	0.00	0.00	0.00	0.00	0.00	0.00
900.00	0.00	0.00	900.00	0.00	0.00	0.00	0.00	0.00	0.00
1,000.00	0.00	0.00	1,000.00	0.00	0.00	0.00	0.00	0.00	0.00
1,100.00	0.00	0.00	1,100.00	0.00	0.00	0.00	0.00	0.00	0.00
1,200.00	0.00	0.00	1,200.00	0.00	0.00	0.00	0.00	0.00	0.00
1,300.00	0.00	0.00	1,300.00	0.00	0.00	0.00	0.00	0.00	0.00
1,400.00	0.00	0.00	1,400.00	0.00	0.00	0.00	0.00	0.00	0.00
1,500.00	0.00	0.00	1,500.00	0.00	0.00	0.00	0.00	0.00	0.00
1,600.00	0.00	0.00	1,600.00	0.00	0.00	0.00	0.00	0.00	0.00
1,700.00	0.00	0.00	1,700.00	0.00	0.00	0.00	0.00	0.00	0.00
1,800.00	0.00	0.00	1,800.00	0.00	0.00	0.00	0.00	0.00	0.00
1,900.00	0.00	0.00	1,900.00	0.00	0.00	0.00	0.00	0.00	0.00
2,000.00	0.00	0.00	2,000.00	0.00	0.00	0.00	0.00	0.00	0.00
2,100.00	0.00	0.00	2,100.00	0.00	0.00	0.00	0.00	0.00	0.00
2,200.00	0.00	0.00	2,200.00	0.00	0.00	0.00	0.00	0.00	0.00
2,300.00	0.00	0.00	2,300.00	0.00	0.00	0.00	0.00	0.00	0.00
2,400.00	0.00	0.00	2,400.00	0.00	0.00	0.00	0.00	0.00	0.00
2,500.00	0.00	0.00	2,500.00	0.00	0.00	0.00	0.00	0.00	0.00
2,600.00	0.00	0.00	2,600.00	0.00	0.00	0.00	0.00	0.00	0.00
2,700.00	0.00	0.00	2,700.00	0.00	0.00	0.00	0.00	0.00	0.00
2,800.00	0.00	0.00	2,800.00	0.00	0.00	0.00	0.00	0.00	0.00
2,900.00	0.00	0.00	2,900.00	0.00	0.00	0.00	0.00	0.00	0.00
3,000.00	0.00	0.00	3,000.00	0.00	0.00	0.00	0.00	0.00	0.00
KOP Begin 2°/100' build									
3,100.00	2.00	66.63	3,099.98	0.69	1.60	-1.57	2.00	2.00	0.00
3,200.00	4.00	66.63	3,199.84	2.77	6.41	-6.27	2.00	2.00	0.00
3,300.00	6.00	66.63	3,299.45	6.22	14.41	-14.11	2.00	2.00	0.00
3,400.00	8.00	66.63	3,398.70	11.06	25.59	-25.06	2.00	2.00	0.00
3,500.00	10.00	66.63	3,497.47	17.26	39.95	-39.12	2.00	2.00	0.00
3,546.55	10.93	66.63	3,543.24	20.62	47.71	-46.72	2.00	2.00	0.00
Begin 10.93° tangent									
3,600.00	10.93	66.63	3,595.72	24.64	57.02	-55.83	0.00	0.00	0.00
3,700.00	10.93	66.63	3,693.91	32.16	74.43	-72.87	0.00	0.00	0.00
3,800.00	10.93	66.63	3,792.09	39.68	91.83	-89.91	0.00	0.00	0.00
3,900.00	10.93	66.63	3,890.28	47.20	109.24	-106.96	0.00	0.00	0.00
4,000.00	10.93	66.63	3,988.46	54.72	126.65	-124.00	0.00	0.00	0.00
4,100.00	10.93	66.63	4,086.65	62.25	144.05	-141.04	0.00	0.00	0.00
4,200.00	10.93	66.63	4,184.83	69.77	161.46	-158.09	0.00	0.00	0.00
4,300.00	10.93	66.63	4,283.02	77.29	178.87	-175.13	0.00	0.00	0.00
4,400.00	10.93	66.63	4,381.21	84.81	196.27	-192.17	0.00	0.00	0.00
4,500.00	10.93	66.63	4,479.39	92.33	213.68	-209.22	0.00	0.00	0.00
4,600.00	10.93	66.63	4,577.58	99.85	231.09	-226.26	0.00	0.00	0.00
4,700.00	10.93	66.63	4,675.76	107.37	248.50	-243.30	0.00	0.00	0.00
4,800.00	10.93	66.63	4,773.95	114.90	265.90	-260.35	0.00	0.00	0.00
4,900.00	10.93	66.63	4,872.13	122.42	283.31	-277.39	0.00	0.00	0.00

Database:	DB_Jul2216dt_v14	Local Co-ordinate Reference:	Well Dotsero 6-10-02L
Company:	Confluence Resources	TVD Reference:	RKB=4995+24 @ 5019.00ft
Project:	Weld County, Colorado	MD Reference:	RKB=4995+24 @ 5019.00ft
Site:	Section 06-T07N-R64W	North Reference:	True
Well:	Dotsero 6-10-02L	Survey Calculation Method:	Minimum Curvature
Wellbore:	Original Hole		
Design:	plan1		

Planned Survey									
Measured Depth (ft)	Inclination (°)	Azimuth (°)	Vertical Depth (ft)	+N/-S (ft)	+E/-W (ft)	Vertical Section (ft)	Dogleg Rate (°/100ft)	Build Rate (°/100ft)	Turn Rate (°/100ft)
5,000.00	10.93	66.63	4,970.32	129.94	300.72	-294.43	0.00	0.00	0.00
5,100.00	10.93	66.63	5,068.51	137.46	318.12	-311.48	0.00	0.00	0.00
5,200.00	10.93	66.63	5,166.69	144.98	335.53	-328.52	0.00	0.00	0.00
5,300.00	10.93	66.63	5,264.88	152.50	352.94	-345.56	0.00	0.00	0.00
5,400.00	10.93	66.63	5,363.06	160.03	370.34	-362.61	0.00	0.00	0.00
5,500.00	10.93	66.63	5,461.25	167.55	387.75	-379.65	0.00	0.00	0.00
5,600.00	10.93	66.63	5,559.43	175.07	405.16	-396.69	0.00	0.00	0.00
5,700.00	10.93	66.63	5,657.62	182.59	422.57	-413.74	0.00	0.00	0.00
5,800.00	10.93	66.63	5,755.81	190.11	439.97	-430.78	0.00	0.00	0.00
5,900.00	10.93	66.63	5,853.99	197.63	457.38	-447.82	0.00	0.00	0.00
6,000.00	10.93	66.63	5,952.18	205.15	474.79	-464.87	0.00	0.00	0.00
6,100.00	10.93	66.63	6,050.36	212.68	492.19	-481.91	0.00	0.00	0.00
6,200.00	10.93	66.63	6,148.55	220.20	509.60	-498.95	0.00	0.00	0.00
6,300.00	10.93	66.63	6,246.73	227.72	527.01	-516.00	0.00	0.00	0.00
6,400.00	10.93	66.63	6,344.92	235.24	544.41	-533.04	0.00	0.00	0.00
6,500.00	10.93	66.63	6,443.10	242.76	561.82	-550.08	0.00	0.00	0.00
6,522.28	10.93	66.63	6,464.98	244.44	565.70	-553.88	0.00	0.00	0.00
Begin 10°/100' build/turn									
6,600.00	5.02	26.71	6,541.96	250.41	574.00	-561.90	10.00	-7.61	-51.37
6,700.00	9.01	300.64	6,641.41	258.33	569.22	-556.76	10.00	3.99	-86.07
6,800.00	18.35	284.55	6,738.49	266.29	547.19	-534.39	10.00	9.34	-16.09
6,900.00	28.14	279.26	6,830.27	274.06	508.57	-495.46	10.00	9.79	-5.28
7,000.00	38.04	276.57	6,913.96	281.40	454.56	-441.16	10.00	9.89	-2.70
7,100.00	47.97	274.85	6,987.00	288.08	386.77	-373.14	10.00	9.93	-1.71
7,200.00	57.92	273.61	7,047.19	293.91	307.28	-293.47	10.00	9.95	-1.24
7,300.00	67.88	272.61	7,092.69	298.70	218.51	-204.56	10.00	9.96	-1.00
7,400.00	77.85	271.75	7,122.12	302.31	123.14	-109.13	10.00	9.97	-0.87
7,500.00	87.81	270.94	7,134.58	304.63	24.07	-10.06	10.00	9.97	-0.80
7,521.93	90.00	270.77	7,135.00	304.95	2.15	11.85	10.00	9.97	-0.79
Begin 90.00° lateral									
7,600.00	90.00	270.77	7,135.00	306.01	-75.91	89.88	0.00	0.00	0.00
7,700.00	90.00	270.77	7,135.00	307.35	-175.90	189.83	0.00	0.00	0.00
7,800.00	90.00	270.77	7,135.00	308.70	-275.90	289.78	0.00	0.00	0.00
7,900.00	90.00	270.77	7,135.00	310.04	-375.89	389.72	0.00	0.00	0.00
8,000.00	90.00	270.77	7,135.00	311.39	-475.88	489.67	0.00	0.00	0.00
8,100.00	90.00	270.77	7,135.00	312.74	-575.87	589.62	0.00	0.00	0.00
8,200.00	90.00	270.77	7,135.00	314.08	-675.86	689.57	0.00	0.00	0.00
8,300.00	90.00	270.77	7,135.00	315.43	-775.85	789.51	0.00	0.00	0.00
8,400.00	90.00	270.77	7,135.00	316.78	-875.84	889.46	0.00	0.00	0.00
8,500.00	90.00	270.77	7,135.00	318.12	-975.83	989.41	0.00	0.00	0.00
8,600.00	90.00	270.77	7,135.00	319.47	-1,075.82	1,089.35	0.00	0.00	0.00
8,700.00	90.00	270.77	7,135.00	320.82	-1,175.81	1,189.30	0.00	0.00	0.00
8,800.00	90.00	270.77	7,135.00	322.16	-1,275.80	1,289.25	0.00	0.00	0.00
8,900.00	90.00	270.77	7,135.00	323.51	-1,375.80	1,389.20	0.00	0.00	0.00
9,000.00	90.00	270.77	7,135.00	324.86	-1,475.79	1,489.14	0.00	0.00	0.00
9,100.00	90.00	270.77	7,135.00	326.20	-1,575.78	1,589.09	0.00	0.00	0.00
9,200.00	90.00	270.77	7,135.00	327.55	-1,675.77	1,689.04	0.00	0.00	0.00
9,300.00	90.00	270.77	7,135.00	328.90	-1,775.76	1,788.99	0.00	0.00	0.00
9,400.00	90.00	270.77	7,135.00	330.24	-1,875.75	1,888.93	0.00	0.00	0.00
9,500.00	90.00	270.77	7,135.00	331.59	-1,975.74	1,988.88	0.00	0.00	0.00
9,600.00	90.00	270.77	7,135.00	332.94	-2,075.73	2,088.83	0.00	0.00	0.00
9,700.00	90.00	270.77	7,135.00	334.28	-2,175.72	2,188.78	0.00	0.00	0.00
9,800.00	90.00	270.77	7,135.00	335.63	-2,275.71	2,288.72	0.00	0.00	0.00
9,900.00	90.00	270.77	7,135.00	336.98	-2,375.71	2,388.67	0.00	0.00	0.00

Database:	DB_Jul2216dt_v14	Local Co-ordinate Reference:	Well Dotsero 6-10-02L
Company:	Confluence Resources	TVD Reference:	RKB=4995+24 @ 5019.00ft
Project:	Weld County, Colorado	MD Reference:	RKB=4995+24 @ 5019.00ft
Site:	Section 06-T07N-R64W	North Reference:	True
Well:	Dotsero 6-10-02L	Survey Calculation Method:	Minimum Curvature
Wellbore:	Original Hole		
Design:	plan1		

Planned Survey									
Measured Depth (ft)	Inclination (°)	Azimuth (°)	Vertical Depth (ft)	+N/-S (ft)	+E/-W (ft)	Vertical Section (ft)	Dogleg Rate (°/100ft)	Build Rate (°/100ft)	Turn Rate (°/100ft)
10,000.00	90.00	270.77	7,135.00	338.32	-2,475.70	2,488.62	0.00	0.00	0.00
10,100.00	90.00	270.77	7,135.00	339.67	-2,575.69	2,588.56	0.00	0.00	0.00
10,200.00	90.00	270.77	7,135.00	341.02	-2,675.68	2,688.51	0.00	0.00	0.00
10,300.00	90.00	270.77	7,135.00	342.36	-2,775.67	2,788.46	0.00	0.00	0.00
10,400.00	90.00	270.77	7,135.00	343.71	-2,875.66	2,888.41	0.00	0.00	0.00
10,500.00	90.00	270.77	7,135.00	345.06	-2,975.65	2,988.35	0.00	0.00	0.00
10,600.00	90.00	270.77	7,135.00	346.40	-3,075.64	3,088.30	0.00	0.00	0.00
10,700.00	90.00	270.77	7,135.00	347.75	-3,175.63	3,188.25	0.00	0.00	0.00
10,800.00	90.00	270.77	7,135.00	349.10	-3,275.62	3,288.20	0.00	0.00	0.00
10,900.00	90.00	270.77	7,135.00	350.44	-3,375.61	3,388.14	0.00	0.00	0.00
11,000.00	90.00	270.77	7,135.00	351.79	-3,475.61	3,488.09	0.00	0.00	0.00
11,100.00	90.00	270.77	7,135.00	353.14	-3,575.60	3,588.04	0.00	0.00	0.00
11,200.00	90.00	270.77	7,135.00	354.48	-3,675.59	3,687.99	0.00	0.00	0.00
11,300.00	90.00	270.77	7,135.00	355.83	-3,775.58	3,787.93	0.00	0.00	0.00
11,400.00	90.00	270.77	7,135.00	357.18	-3,875.57	3,887.88	0.00	0.00	0.00
11,500.00	90.00	270.77	7,135.00	358.52	-3,975.56	3,987.83	0.00	0.00	0.00
11,600.00	90.00	270.77	7,135.00	359.87	-4,075.55	4,087.77	0.00	0.00	0.00
11,700.00	90.00	270.77	7,135.00	361.21	-4,175.54	4,187.72	0.00	0.00	0.00
11,800.00	90.00	270.77	7,135.00	362.56	-4,275.53	4,287.67	0.00	0.00	0.00
11,900.00	90.00	270.77	7,135.00	363.91	-4,375.52	4,387.62	0.00	0.00	0.00
12,000.00	90.00	270.77	7,135.00	365.25	-4,475.51	4,487.56	0.00	0.00	0.00
12,100.00	90.00	270.77	7,135.00	366.60	-4,575.51	4,587.51	0.00	0.00	0.00
12,200.00	90.00	270.77	7,135.00	367.95	-4,675.50	4,687.46	0.00	0.00	0.00
12,300.00	90.00	270.77	7,135.00	369.29	-4,775.49	4,787.41	0.00	0.00	0.00
12,400.00	90.00	270.77	7,135.00	370.64	-4,875.48	4,887.35	0.00	0.00	0.00
12,500.00	90.00	270.77	7,135.00	371.99	-4,975.47	4,987.30	0.00	0.00	0.00
12,600.00	90.00	270.77	7,135.00	373.33	-5,075.46	5,087.25	0.00	0.00	0.00
12,700.00	90.00	270.77	7,135.00	374.68	-5,175.45	5,187.20	0.00	0.00	0.00
12,800.00	90.00	270.77	7,135.00	376.03	-5,275.44	5,287.14	0.00	0.00	0.00
12,900.00	90.00	270.77	7,135.00	377.37	-5,375.43	5,387.09	0.00	0.00	0.00
13,000.00	90.00	270.77	7,135.00	378.72	-5,475.42	5,487.04	0.00	0.00	0.00
13,100.00	90.00	270.77	7,135.00	380.07	-5,575.42	5,586.98	0.00	0.00	0.00
13,200.00	90.00	270.77	7,135.00	381.41	-5,675.41	5,686.93	0.00	0.00	0.00
13,300.00	90.00	270.77	7,135.00	382.76	-5,775.40	5,786.88	0.00	0.00	0.00
13,400.00	90.00	270.77	7,135.00	384.11	-5,875.39	5,886.83	0.00	0.00	0.00
13,500.00	90.00	270.77	7,135.00	385.45	-5,975.38	5,986.77	0.00	0.00	0.00
13,600.00	90.00	270.77	7,135.00	386.80	-6,075.37	6,086.72	0.00	0.00	0.00
13,700.00	90.00	270.77	7,135.00	388.15	-6,175.36	6,186.67	0.00	0.00	0.00
13,800.00	90.00	270.77	7,135.00	389.49	-6,275.35	6,286.62	0.00	0.00	0.00
13,900.00	90.00	270.77	7,135.00	390.84	-6,375.34	6,386.56	0.00	0.00	0.00
14,000.00	90.00	270.77	7,135.00	392.19	-6,475.33	6,486.51	0.00	0.00	0.00
14,100.00	90.00	270.77	7,135.00	393.53	-6,575.32	6,586.46	0.00	0.00	0.00
14,200.00	90.00	270.77	7,135.00	394.88	-6,675.32	6,686.41	0.00	0.00	0.00
14,300.00	90.00	270.77	7,135.00	396.23	-6,775.31	6,786.35	0.00	0.00	0.00
14,400.00	90.00	270.77	7,135.00	397.57	-6,875.30	6,886.30	0.00	0.00	0.00
14,500.00	90.00	270.77	7,135.00	398.92	-6,975.29	6,986.25	0.00	0.00	0.00
14,600.00	90.00	270.77	7,135.00	400.27	-7,075.28	7,086.19	0.00	0.00	0.00
14,700.00	90.00	270.77	7,135.00	401.61	-7,175.27	7,186.14	0.00	0.00	0.00
14,800.00	90.00	270.77	7,135.00	402.96	-7,275.26	7,286.09	0.00	0.00	0.00
14,900.00	90.00	270.77	7,135.00	404.31	-7,375.25	7,386.04	0.00	0.00	0.00
15,000.00	90.00	270.77	7,135.00	405.65	-7,475.24	7,485.98	0.00	0.00	0.00
15,100.00	90.00	270.77	7,135.00	407.00	-7,575.23	7,585.93	0.00	0.00	0.00
15,200.00	90.00	270.77	7,135.00	408.34	-7,675.22	7,685.88	0.00	0.00	0.00
15,300.00	90.00	270.77	7,135.00	409.69	-7,775.22	7,785.83	0.00	0.00	0.00

Database:	DB_Jul2216dt_v14	Local Co-ordinate Reference:	Well Dotsero 6-10-02L
Company:	Confluence Resources	TVD Reference:	RKB=4995+24 @ 5019.00ft
Project:	Weld County, Colorado	MD Reference:	RKB=4995+24 @ 5019.00ft
Site:	Section 06-T07N-R64W	North Reference:	True
Well:	Dotsero 6-10-02L	Survey Calculation Method:	Minimum Curvature
Wellbore:	Original Hole		
Design:	plan1		

Planned Survey									
Measured Depth (ft)	Inclination (°)	Azimuth (°)	Vertical Depth (ft)	+N/-S (ft)	+E/-W (ft)	Vertical Section (ft)	Dogleg Rate (°/100ft)	Build Rate (°/100ft)	Turn Rate (°/100ft)
15,400.00	90.00	270.77	7,135.00	411.04	-7,875.21	7,885.77	0.00	0.00	0.00
15,500.00	90.00	270.77	7,135.00	412.38	-7,975.20	7,985.72	0.00	0.00	0.00
15,600.00	90.00	270.77	7,135.00	413.73	-8,075.19	8,085.67	0.00	0.00	0.00
15,700.00	90.00	270.77	7,135.00	415.08	-8,175.18	8,185.62	0.00	0.00	0.00
15,800.00	90.00	270.77	7,135.00	416.42	-8,275.17	8,285.56	0.00	0.00	0.00
15,900.00	90.00	270.77	7,135.00	417.77	-8,375.16	8,385.51	0.00	0.00	0.00
16,000.00	90.00	270.77	7,135.00	419.12	-8,475.15	8,485.46	0.00	0.00	0.00
16,100.00	90.00	270.77	7,135.00	420.46	-8,575.14	8,585.40	0.00	0.00	0.00
16,200.00	90.00	270.77	7,135.00	421.81	-8,675.13	8,685.35	0.00	0.00	0.00
16,300.00	90.00	270.77	7,135.00	423.16	-8,775.13	8,785.30	0.00	0.00	0.00
16,400.00	90.00	270.77	7,135.00	424.50	-8,875.12	8,885.25	0.00	0.00	0.00
16,500.00	90.00	270.77	7,135.00	425.85	-8,975.11	8,985.19	0.00	0.00	0.00
16,600.00	90.00	270.77	7,135.00	427.20	-9,075.10	9,085.14	0.00	0.00	0.00
16,700.00	90.00	270.77	7,135.00	428.54	-9,175.09	9,185.09	0.00	0.00	0.00
16,800.00	90.00	270.77	7,135.00	429.89	-9,275.08	9,285.04	0.00	0.00	0.00
16,900.00	90.00	270.77	7,135.00	431.24	-9,375.07	9,384.98	0.00	0.00	0.00
16,912.47	90.00	270.77	7,135.00	431.40	-9,387.54	9,397.45	0.00	0.00	0.00
PBHL/TD 16912.47 MD/7135.00 TVD									

Design Targets									
Target Name - hit/miss target - Shape	Dip Angle (°)	Dip Dir. (°)	TVD (ft)	+N/-S (ft)	+E/-W (ft)	Northing (usft)	Easting (usft)	Latitude	Longitude
Dotsero 6-010-02L LP 3- - plan hits target center - Point	0.00	0.00	7,135.00	304.95	2.15	14,745,383.59	1,755,741.30	40.59967711	-104.58454472
Dotsero 6-010-02L PBHL - plan hits target center - Point	0.00	0.00	7,135.00	431.40	-9,387.54	14,745,465.73	1,746,351.14	40.60001938	-104.61837061

Plan Annotations				
Measured Depth (ft)	Vertical Depth (ft)	Local Coordinates		Comment
		+N/-S (ft)	+E/-W (ft)	
3,000.00	3,000.00	0.00	0.00	KOP Begin 2°/100' build
3,546.55	3,543.24	20.62	47.71	Begin 10.93° tangent
6,522.28	6,464.98	244.44	565.70	Begin 10°/100' build/turn
7,521.93	7,135.00	304.95	2.15	Begin 90.00° lateral
16,912.47	7,135.00	431.40	-9,387.54	PBHL/TD 16912.47 MD/7135.00 TVD

Database:	DB_Jul2216dt_v14	Local Co-ordinate Reference:	Well Dotsero 6-10-02L
Company:	Confluence Resources	TVD Reference:	RKB=4995+24 @ 5019.00ft
Project:	Weld County, Colorado	MD Reference:	RKB=4995+24 @ 5019.00ft
Site:	Section 06-T07N-R64W	North Reference:	True
Well:	Dotsero 6-10-02L	Survey Calculation Method:	Minimum Curvature
Wellbore:	Original Hole		
Design:	plan1		

Project	Weld County, Colorado		
Map System:	Universal Transverse Mercator (US Survey Feet)	System Datum:	Mean Sea Level
Geo Datum:	NAD83 Colorado - HARN		
Map Zone:	Zone 13N (108 W to 102 W)		

Site		Section 06-T07N-R64W			
Site Position:		Northing:	14,746,184.54 usft	Latitude:	40.60187654
From:	Map	Easting:	1,755,730.03 usft	Longitude:	-104.58457171
Position Uncertainty:	0.00 ft	Slot Radius:	13-3/16 "	Grid Convergence:	0.27 °

Well	Dotsero 6-10-02L, Surf loc: 1526 FSL 475 FEL Section 06-T07N-R64W					
Well Position	+N/-S	0.00 ft	Northing:	14,745,078.63 usft	Latitude:	40.59883975
	+E/-W	0.00 ft	Easting:	1,755,740.59 usft	Longitude:	-104.58455247
Position Uncertainty		0.00 ft	Wellhead Elevation:		Ground Level:	4,995.00 ft

Wellbore	Original Hole				
Magnetics	Model Name	Sample Date	Declination (°)	Dip Angle (°)	Field Strength (nT)
	HDGM	2/19/2018	7.98	66.98	52,359.20000000

Design	plan1			
Audit Notes:				
Version:	Phase:	PLAN	Tie On Depth:	0.00
Vertical Section:	Depth From (TVD) (ft)	+N/-S (ft)	+E/-W (ft)	Direction (°)
	0.00	0.00	0.00	272.63

Plan Survey Tool Program	Date	2/19/2018		
Depth From (ft)	Depth To (ft)	Survey (Wellbore)	Tool Name	Remarks
1	0.00	16,912.47 plan1 (Original Hole)		

Plan Sections										
Measured Depth (ft)	Inclination (°)	Azimuth (°)	Vertical Depth (ft)	+N/-S (ft)	+E/-W (ft)	Dogleg Rate (°/100ft)	Build Rate (°/100ft)	Turn Rate (°/100ft)	TFO (°)	Target
0.00	0.00	0.00	0.00	0.00	0.00	0.00	0.00	0.00	0.00	
3,000.00	0.00	0.00	3,000.00	0.00	0.00	0.00	0.00	0.00	0.00	
3,546.55	10.93	66.63	3,543.24	20.62	47.71	2.00	2.00	0.00	66.63	
6,522.28	10.93	66.63	6,464.98	244.44	565.70	0.00	0.00	0.00	0.00	
7,521.93	90.00	270.77	7,135.00	304.95	2.15	10.00	7.91	-15.59	-155.47	Dotsero 6-010-02L LF
16,912.47	90.00	270.77	7,135.00	431.40	-9,387.54	0.00	0.00	0.00	0.00	Dotsero 6-010-02L PE

Database:	DB_Jul2216dt_v14	Local Co-ordinate Reference:	Well Dotsero 6-10-02L
Company:	Confluence Resources	TVD Reference:	RKB=4995+24 @ 5019.00ft
Project:	Weld County, Colorado	MD Reference:	RKB=4995+24 @ 5019.00ft
Site:	Section 06-T07N-R64W	North Reference:	True
Well:	Dotsero 6-10-02L	Survey Calculation Method:	Minimum Curvature
Wellbore:	Original Hole		
Design:	plan1		

Planned Survey									
Measured Depth (ft)	Inclination (°)	Azimuth (°)	Vertical Depth (ft)	+N/-S (ft)	+E/-W (ft)	Map Northing (usft)	Map Easting (usft)	Latitude	Longitude
0.00	0.00	0.00	0.00	0.00	0.00	14,745,078.63	1,755,740.59	40.59883975	-104.58455247
100.00	0.00	0.00	100.00	0.00	0.00	14,745,078.63	1,755,740.59	40.59883975	-104.58455247
200.00	0.00	0.00	200.00	0.00	0.00	14,745,078.63	1,755,740.59	40.59883975	-104.58455247
300.00	0.00	0.00	300.00	0.00	0.00	14,745,078.63	1,755,740.59	40.59883975	-104.58455247
400.00	0.00	0.00	400.00	0.00	0.00	14,745,078.63	1,755,740.59	40.59883975	-104.58455247
500.00	0.00	0.00	500.00	0.00	0.00	14,745,078.63	1,755,740.59	40.59883975	-104.58455247
600.00	0.00	0.00	600.00	0.00	0.00	14,745,078.63	1,755,740.59	40.59883975	-104.58455247
700.00	0.00	0.00	700.00	0.00	0.00	14,745,078.63	1,755,740.59	40.59883975	-104.58455247
800.00	0.00	0.00	800.00	0.00	0.00	14,745,078.63	1,755,740.59	40.59883975	-104.58455247
900.00	0.00	0.00	900.00	0.00	0.00	14,745,078.63	1,755,740.59	40.59883975	-104.58455247
1,000.00	0.00	0.00	1,000.00	0.00	0.00	14,745,078.63	1,755,740.59	40.59883975	-104.58455247
1,100.00	0.00	0.00	1,100.00	0.00	0.00	14,745,078.63	1,755,740.59	40.59883975	-104.58455247
1,200.00	0.00	0.00	1,200.00	0.00	0.00	14,745,078.63	1,755,740.59	40.59883975	-104.58455247
1,300.00	0.00	0.00	1,300.00	0.00	0.00	14,745,078.63	1,755,740.59	40.59883975	-104.58455247
1,400.00	0.00	0.00	1,400.00	0.00	0.00	14,745,078.63	1,755,740.59	40.59883975	-104.58455247
1,500.00	0.00	0.00	1,500.00	0.00	0.00	14,745,078.63	1,755,740.59	40.59883975	-104.58455247
1,600.00	0.00	0.00	1,600.00	0.00	0.00	14,745,078.63	1,755,740.59	40.59883975	-104.58455247
1,700.00	0.00	0.00	1,700.00	0.00	0.00	14,745,078.63	1,755,740.59	40.59883975	-104.58455247
1,800.00	0.00	0.00	1,800.00	0.00	0.00	14,745,078.63	1,755,740.59	40.59883975	-104.58455247
1,900.00	0.00	0.00	1,900.00	0.00	0.00	14,745,078.63	1,755,740.59	40.59883975	-104.58455247
2,000.00	0.00	0.00	2,000.00	0.00	0.00	14,745,078.63	1,755,740.59	40.59883975	-104.58455247
2,100.00	0.00	0.00	2,100.00	0.00	0.00	14,745,078.63	1,755,740.59	40.59883975	-104.58455247
2,200.00	0.00	0.00	2,200.00	0.00	0.00	14,745,078.63	1,755,740.59	40.59883975	-104.58455247
2,300.00	0.00	0.00	2,300.00	0.00	0.00	14,745,078.63	1,755,740.59	40.59883975	-104.58455247
2,400.00	0.00	0.00	2,400.00	0.00	0.00	14,745,078.63	1,755,740.59	40.59883975	-104.58455247
2,500.00	0.00	0.00	2,500.00	0.00	0.00	14,745,078.63	1,755,740.59	40.59883975	-104.58455247
2,600.00	0.00	0.00	2,600.00	0.00	0.00	14,745,078.63	1,755,740.59	40.59883975	-104.58455247
2,700.00	0.00	0.00	2,700.00	0.00	0.00	14,745,078.63	1,755,740.59	40.59883975	-104.58455247
2,800.00	0.00	0.00	2,800.00	0.00	0.00	14,745,078.63	1,755,740.59	40.59883975	-104.58455247
2,900.00	0.00	0.00	2,900.00	0.00	0.00	14,745,078.63	1,755,740.59	40.59883975	-104.58455247
3,000.00	0.00	0.00	3,000.00	0.00	0.00	14,745,078.63	1,755,740.59	40.59883975	-104.58455247
KOP Begin 2°/100' build									
3,100.00	2.00	66.63	3,099.98	0.69	1.60	14,745,079.33	1,755,742.19	40.59884165	-104.58454669
3,200.00	4.00	66.63	3,199.84	2.77	6.41	14,745,081.43	1,755,746.98	40.59884735	-104.58452939
3,300.00	6.00	66.63	3,299.45	6.22	14.41	14,745,084.92	1,755,754.97	40.59885685	-104.58450057
3,400.00	8.00	66.63	3,398.70	11.06	25.59	14,745,089.81	1,755,766.13	40.59887012	-104.58446027
3,500.00	10.00	66.63	3,497.47	17.26	39.95	14,745,096.08	1,755,780.46	40.5988716	-104.58440854
3,546.55	10.93	66.63	3,543.24	20.62	47.71	14,745,099.47	1,755,788.20	40.59889636	-104.58438058
Begin 10.93° tangent									
3,600.00	10.93	66.63	3,595.72	24.64	57.02	14,745,103.54	1,755,797.49	40.59890740	-104.58434706
3,700.00	10.93	66.63	3,693.91	32.16	74.43	14,745,111.14	1,755,814.86	40.59892806	-104.58428436
3,800.00	10.93	66.63	3,792.09	39.68	91.83	14,745,118.74	1,755,832.23	40.59894871	-104.58422165
3,900.00	10.93	66.63	3,890.28	47.20	109.24	14,745,126.35	1,755,849.60	40.59896936	-104.58415894
4,000.00	10.93	66.63	3,988.46	54.72	126.65	14,745,133.95	1,755,866.98	40.59899002	-104.58409624
4,100.00	10.93	66.63	4,086.65	62.25	144.05	14,745,141.55	1,755,884.35	40.59901067	-104.58403353
4,200.00	10.93	66.63	4,184.83	69.77	161.46	14,745,149.16	1,755,901.72	40.59903132	-104.58397082
4,300.00	10.93	66.63	4,283.02	77.29	178.87	14,745,156.76	1,755,919.09	40.59905197	-104.58390812
4,400.00	10.93	66.63	4,381.21	84.81	196.27	14,745,164.36	1,755,936.46	40.59907263	-104.58384541
4,500.00	10.93	66.63	4,479.39	92.33	213.68	14,745,171.97	1,755,953.83	40.59909328	-104.58378270
4,600.00	10.93	66.63	4,577.58	99.85	231.09	14,745,179.57	1,755,971.20	40.59911393	-104.58371999
4,700.00	10.93	66.63	4,675.76	107.37	248.50	14,745,187.18	1,755,988.57	40.59913459	-104.58365729
4,800.00	10.93	66.63	4,773.95	114.90	265.90	14,745,194.78	1,756,005.95	40.59915524	-104.58359458
4,900.00	10.93	66.63	4,872.13	122.42	283.31	14,745,202.38	1,756,023.32	40.59917589	-104.58353187
5,000.00	10.93	66.63	4,970.32	129.94	300.72	14,745,209.99	1,756,040.69	40.59919654	-104.58346917

Database:	DB_Jul2216dt_v14	Local Co-ordinate Reference:	Well Dotsero 6-10-02L
Company:	Confluence Resources	TVD Reference:	RKB=4995+24 @ 5019.00ft
Project:	Weld County, Colorado	MD Reference:	RKB=4995+24 @ 5019.00ft
Site:	Section 06-T07N-R64W	North Reference:	True
Well:	Dotsero 6-10-02L	Survey Calculation Method:	Minimum Curvature
Wellbore:	Original Hole		
Design:	plan1		

Planned Survey									
Measured Depth (ft)	Inclination (°)	Azimuth (°)	Vertical Depth (ft)	+N/-S (ft)	+E/-W (ft)	Map Northing (usft)	Map Easting (usft)	Latitude	Longitude
5,100.00	10.93	66.63	5,068.51	137.46	318.12	14,745,217.59	1,756,058.06	40.59921720	-104.58340646
5,200.00	10.93	66.63	5,166.69	144.98	335.53	14,745,225.19	1,756,075.43	40.59923785	-104.58334375
5,300.00	10.93	66.63	5,264.88	152.50	352.94	14,745,232.80	1,756,092.80	40.59925850	-104.58328104
5,400.00	10.93	66.63	5,363.06	160.03	370.34	14,745,240.40	1,756,110.17	40.59927915	-104.58321834
5,500.00	10.93	66.63	5,461.25	167.55	387.75	14,745,248.00	1,756,127.54	40.59929981	-104.58315563
5,600.00	10.93	66.63	5,559.43	175.07	405.16	14,745,255.61	1,756,144.92	40.59932046	-104.58309292
5,700.00	10.93	66.63	5,657.62	182.59	422.57	14,745,263.21	1,756,162.29	40.59934111	-104.58303021
5,800.00	10.93	66.63	5,755.81	190.11	439.97	14,745,270.81	1,756,179.66	40.59936176	-104.58296751
5,900.00	10.93	66.63	5,853.99	197.63	457.38	14,745,278.42	1,756,197.03	40.59938241	-104.58290480
6,000.00	10.93	66.63	5,952.18	205.15	474.79	14,745,286.02	1,756,214.40	40.59940307	-104.58284209
6,100.00	10.93	66.63	6,050.36	212.68	492.19	14,745,293.63	1,756,231.77	40.59942372	-104.58277938
6,200.00	10.93	66.63	6,148.55	220.20	509.60	14,745,301.23	1,756,249.14	40.59944437	-104.58271667
6,300.00	10.93	66.63	6,246.73	227.72	527.01	14,745,308.83	1,756,266.51	40.59946502	-104.58265397
6,400.00	10.93	66.63	6,344.92	235.24	544.41	14,745,316.44	1,756,283.89	40.59948567	-104.58259126
6,500.00	10.93	66.63	6,443.10	242.76	561.82	14,745,324.04	1,756,301.26	40.59950633	-104.58252855
6,522.28	10.93	66.63	6,464.98	244.44	565.70	14,745,325.73	1,756,305.13	40.59951093	-104.58251458
Begin 10°/100' build/turn									
6,600.00	5.02	26.71	6,541.96	250.41	574.00	14,745,331.74	1,756,313.40	40.59952732	-104.58248466
6,700.00	9.01	300.64	6,641.41	258.33	569.22	14,745,339.64	1,756,308.58	40.59954907	-104.58250190
6,800.00	18.35	284.55	6,738.49	266.29	547.19	14,745,347.50	1,756,286.51	40.59957094	-104.58258127
6,900.00	28.14	279.26	6,830.27	274.06	508.57	14,745,355.09	1,756,247.86	40.59959228	-104.58272037
7,000.00	38.04	276.57	6,913.96	281.40	454.56	14,745,362.17	1,756,193.81	40.59961243	-104.58291496
7,100.00	47.97	274.85	6,987.00	288.08	386.77	14,745,368.53	1,756,126.00	40.59963078	-104.58315915
7,200.00	57.92	273.61	7,047.19	293.91	307.28	14,745,373.98	1,756,046.48	40.59964678	-104.58344550
7,300.00	67.88	272.61	7,092.69	298.70	218.51	14,745,378.35	1,755,957.68	40.59965993	-104.58376531
7,400.00	77.85	271.75	7,122.12	302.31	123.14	14,745,381.51	1,755,862.30	40.59966984	-104.58410888
7,500.00	87.81	270.94	7,134.58	304.63	24.07	14,745,383.36	1,755,763.22	40.59967621	-104.58446575
7,521.93	90.00	270.77	7,135.00	304.95	2.15	14,745,383.59	1,755,741.30	40.59967711	-104.58454472
Begin 90.00° lateral									
7,600.00	90.00	270.77	7,135.00	306.01	-75.91	14,745,384.27	1,755,663.23	40.59968000	-104.58482594
7,700.00	90.00	270.77	7,135.00	307.35	-175.90	14,745,385.15	1,755,563.24	40.59968370	-104.58518615
7,800.00	90.00	270.77	7,135.00	308.70	-275.90	14,745,386.02	1,755,463.24	40.59968739	-104.58554636
7,900.00	90.00	270.77	7,135.00	310.04	-375.89	14,745,386.90	1,755,363.24	40.59969109	-104.58590657
8,000.00	90.00	270.77	7,135.00	311.39	-475.88	14,745,387.77	1,755,263.25	40.59969478	-104.58626678
8,100.00	90.00	270.77	7,135.00	312.74	-575.87	14,745,388.65	1,755,163.25	40.59969847	-104.58662699
8,200.00	90.00	270.77	7,135.00	314.08	-675.86	14,745,389.52	1,755,063.26	40.59970216	-104.58698720
8,300.00	90.00	270.77	7,135.00	315.43	-775.85	14,745,390.40	1,754,963.26	40.59970585	-104.58734741
8,400.00	90.00	270.77	7,135.00	316.78	-875.84	14,745,391.27	1,754,863.26	40.59970954	-104.58770762
8,500.00	90.00	270.77	7,135.00	318.12	-975.83	14,745,392.14	1,754,763.27	40.59971322	-104.58806783
8,600.00	90.00	270.77	7,135.00	319.47	-1,075.82	14,745,393.02	1,754,663.27	40.59971691	-104.58842804
8,700.00	90.00	270.77	7,135.00	320.82	-1,175.81	14,745,393.89	1,754,563.28	40.59972060	-104.58878825
8,800.00	90.00	270.77	7,135.00	322.16	-1,275.80	14,745,394.77	1,754,463.28	40.59972428	-104.58914846
8,900.00	90.00	270.77	7,135.00	323.51	-1,375.80	14,745,395.64	1,754,363.28	40.59972796	-104.58950868
9,000.00	90.00	270.77	7,135.00	324.86	-1,475.79	14,745,396.52	1,754,263.29	40.59973164	-104.58986889
9,100.00	90.00	270.77	7,135.00	326.20	-1,575.78	14,745,397.39	1,754,163.29	40.59973532	-104.59022910
9,200.00	90.00	270.77	7,135.00	327.55	-1,675.77	14,745,398.27	1,754,063.30	40.59973900	-104.59058931
9,300.00	90.00	270.77	7,135.00	328.90	-1,775.76	14,745,399.14	1,753,963.30	40.59974268	-104.59094952
9,400.00	90.00	270.77	7,135.00	330.24	-1,875.75	14,745,400.02	1,753,863.30	40.59974636	-104.59130973
9,500.00	90.00	270.77	7,135.00	331.59	-1,975.74	14,745,400.89	1,753,763.31	40.59975003	-104.59166994
9,600.00	90.00	270.77	7,135.00	332.94	-2,075.73	14,745,401.77	1,753,663.31	40.59975371	-104.59203015
9,700.00	90.00	270.77	7,135.00	334.28	-2,175.72	14,745,402.64	1,753,563.32	40.59975738	-104.59239036
9,800.00	90.00	270.77	7,135.00	335.63	-2,275.71	14,745,403.52	1,753,463.32	40.59976105	-104.59275057
9,900.00	90.00	270.77	7,135.00	336.98	-2,375.71	14,745,404.39	1,753,363.33	40.59976473	-104.59311079
10,000.00	90.00	270.77	7,135.00	338.32	-2,475.70	14,745,405.27	1,753,263.33	40.59976840	-104.59347100

Database:	DB_Jul2216dt_v14	Local Co-ordinate Reference:	Well Dotsero 6-10-02L
Company:	Confluence Resources	TVD Reference:	RKB=4995+24 @ 5019.00ft
Project:	Weld County, Colorado	MD Reference:	RKB=4995+24 @ 5019.00ft
Site:	Section 06-T07N-R64W	North Reference:	True
Well:	Dotsero 6-10-02L	Survey Calculation Method:	Minimum Curvature
Wellbore:	Original Hole		
Design:	plan1		

Planned Survey									
Measured Depth (ft)	Inclination (°)	Azimuth (°)	Vertical Depth (ft)	+N/-S (ft)	+E/-W (ft)	Map Northing (usft)	Map Easting (usft)	Latitude	Longitude
10,100.00	90.00	270.77	7,135.00	339.67	-2,575.69	14,745,406.14	1,753,163.33	40.59977206	-104.59383121
10,200.00	90.00	270.77	7,135.00	341.02	-2,675.68	14,745,407.01	1,753,063.34	40.59977573	-104.59419142
10,300.00	90.00	270.77	7,135.00	342.36	-2,775.67	14,745,407.89	1,752,963.34	40.59977940	-104.59455163
10,400.00	90.00	270.77	7,135.00	343.71	-2,875.66	14,745,408.76	1,752,863.35	40.59978307	-104.59491184
10,500.00	90.00	270.77	7,135.00	345.06	-2,975.65	14,745,409.64	1,752,763.35	40.59978673	-104.59527205
10,600.00	90.00	270.77	7,135.00	346.40	-3,075.64	14,745,410.51	1,752,663.35	40.59979039	-104.59563227
10,700.00	90.00	270.77	7,135.00	347.75	-3,175.63	14,745,411.39	1,752,563.36	40.59979406	-104.59599248
10,800.00	90.00	270.77	7,135.00	349.10	-3,275.62	14,745,412.26	1,752,463.36	40.59979772	-104.59635269
10,900.00	90.00	270.77	7,135.00	350.44	-3,375.61	14,745,413.14	1,752,363.37	40.59980138	-104.59671290
11,000.00	90.00	270.77	7,135.00	351.79	-3,475.61	14,745,414.01	1,752,263.37	40.59980504	-104.59707311
11,100.00	90.00	270.77	7,135.00	353.14	-3,575.60	14,745,414.89	1,752,163.37	40.59980869	-104.59743333
11,200.00	90.00	270.77	7,135.00	354.48	-3,675.59	14,745,415.76	1,752,063.38	40.59981235	-104.59779354
11,300.00	90.00	270.77	7,135.00	355.83	-3,775.58	14,745,416.64	1,751,963.38	40.59981601	-104.59815375
11,400.00	90.00	270.77	7,135.00	357.18	-3,875.57	14,745,417.51	1,751,863.39	40.59981966	-104.59851396
11,500.00	90.00	270.77	7,135.00	358.52	-3,975.56	14,745,418.39	1,751,763.39	40.59982331	-104.59887417
11,600.00	90.00	270.77	7,135.00	359.87	-4,075.55	14,745,419.26	1,751,663.39	40.59982697	-104.59923439
11,700.00	90.00	270.77	7,135.00	361.21	-4,175.54	14,745,420.14	1,751,563.40	40.59983062	-104.59959460
11,800.00	90.00	270.77	7,135.00	362.56	-4,275.53	14,745,421.01	1,751,463.40	40.59983427	-104.59995481
11,900.00	90.00	270.77	7,135.00	363.91	-4,375.52	14,745,421.89	1,751,363.41	40.59983792	-104.60031502
12,000.00	90.00	270.77	7,135.00	365.25	-4,475.51	14,745,422.76	1,751,263.41	40.59984156	-104.60067523
12,100.00	90.00	270.77	7,135.00	366.60	-4,575.51	14,745,423.63	1,751,163.41	40.59984521	-104.60103545
12,200.00	90.00	270.77	7,135.00	367.95	-4,675.50	14,745,424.51	1,751,063.42	40.59984886	-104.60139566
12,300.00	90.00	270.77	7,135.00	369.29	-4,775.49	14,745,425.38	1,750,963.42	40.59985250	-104.60175587
12,400.00	90.00	270.77	7,135.00	370.64	-4,875.48	14,745,426.26	1,750,863.43	40.59985614	-104.60211608
12,500.00	90.00	270.77	7,135.00	371.99	-4,975.47	14,745,427.13	1,750,763.43	40.59985979	-104.60247630
12,600.00	90.00	270.77	7,135.00	373.33	-5,075.46	14,745,428.01	1,750,663.43	40.59986343	-104.60283651
12,700.00	90.00	270.77	7,135.00	374.68	-5,175.45	14,745,428.88	1,750,563.44	40.59986707	-104.60319672
12,800.00	90.00	270.77	7,135.00	376.03	-5,275.44	14,745,429.76	1,750,463.44	40.59987071	-104.60355693
12,900.00	90.00	270.77	7,135.00	377.37	-5,375.43	14,745,430.63	1,750,363.45	40.59987434	-104.60391715
13,000.00	90.00	270.77	7,135.00	378.72	-5,475.42	14,745,431.51	1,750,263.45	40.59987798	-104.60427736
13,100.00	90.00	270.77	7,135.00	380.07	-5,575.42	14,745,432.38	1,750,163.45	40.59988161	-104.60463757
13,200.00	90.00	270.77	7,135.00	381.41	-5,675.41	14,745,433.26	1,750,063.46	40.59988525	-104.60499779
13,300.00	90.00	270.77	7,135.00	382.76	-5,775.40	14,745,434.13	1,749,963.46	40.59988888	-104.60535800
13,400.00	90.00	270.77	7,135.00	384.11	-5,875.39	14,745,435.01	1,749,863.47	40.59989251	-104.60571821
13,500.00	90.00	270.77	7,135.00	385.45	-5,975.38	14,745,435.88	1,749,763.47	40.59989615	-104.60607842
13,600.00	90.00	270.77	7,135.00	386.80	-6,075.37	14,745,436.76	1,749,663.47	40.59989978	-104.60643864
13,700.00	90.00	270.77	7,135.00	388.15	-6,175.36	14,745,437.63	1,749,563.48	40.59990340	-104.60679885
13,800.00	90.00	270.77	7,135.00	389.49	-6,275.35	14,745,438.50	1,749,463.48	40.59990703	-104.60715906
13,900.00	90.00	270.77	7,135.00	390.84	-6,375.34	14,745,439.38	1,749,363.49	40.59991066	-104.60751928
14,000.00	90.00	270.77	7,135.00	392.19	-6,475.33	14,745,440.25	1,749,263.49	40.59991428	-104.60787949
14,100.00	90.00	270.77	7,135.00	393.53	-6,575.32	14,745,441.13	1,749,163.49	40.59991791	-104.60823970
14,200.00	90.00	270.77	7,135.00	394.88	-6,675.32	14,745,442.00	1,749,063.50	40.59992153	-104.60859992
14,300.00	90.00	270.77	7,135.00	396.23	-6,775.31	14,745,442.88	1,748,963.50	40.59992515	-104.60896013
14,400.00	90.00	270.77	7,135.00	397.57	-6,875.30	14,745,443.75	1,748,863.51	40.59992877	-104.60932034
14,500.00	90.00	270.77	7,135.00	398.92	-6,975.29	14,745,444.63	1,748,763.51	40.59993239	-104.60968056
14,600.00	90.00	270.77	7,135.00	400.27	-7,075.28	14,745,445.50	1,748,663.51	40.59993601	-104.61004077
14,700.00	90.00	270.77	7,135.00	401.61	-7,175.27	14,745,446.38	1,748,563.52	40.59993963	-104.61040098
14,800.00	90.00	270.77	7,135.00	402.96	-7,275.26	14,745,447.25	1,748,463.52	40.59994324	-104.61076120
14,900.00	90.00	270.77	7,135.00	404.31	-7,375.25	14,745,448.13	1,748,363.53	40.59994686	-104.61112141
15,000.00	90.00	270.77	7,135.00	405.65	-7,475.24	14,745,449.00	1,748,263.53	40.59995047	-104.61148163
15,100.00	90.00	270.77	7,135.00	407.00	-7,575.23	14,745,449.88	1,748,163.53	40.59995409	-104.61184184
15,200.00	90.00	270.77	7,135.00	408.34	-7,675.22	14,745,450.75	1,748,063.54	40.59995770	-104.61220205
15,300.00	90.00	270.77	7,135.00	409.69	-7,775.22	14,745,451.63	1,747,963.54	40.59996131	-104.61256227
15,400.00	90.00	270.77	7,135.00	411.04	-7,875.21	14,745,452.50	1,747,863.55	40.59996492	-104.61292248
15,500.00	90.00	270.77	7,135.00	412.38	-7,975.20	14,745,453.37	1,747,763.55	40.59996853	-104.61328269

Database:	DB_Jul2216dt_v14	Local Co-ordinate Reference:	Well Dotsero 6-10-02L
Company:	Confluence Resources	TVD Reference:	RKB=4995+24 @ 5019.00ft
Project:	Weld County, Colorado	MD Reference:	RKB=4995+24 @ 5019.00ft
Site:	Section 06-T07N-R64W	North Reference:	True
Well:	Dotsero 6-10-02L	Survey Calculation Method:	Minimum Curvature
Wellbore:	Original Hole		
Design:	plan1		

Planned Survey									
Measured Depth (ft)	Inclination (°)	Azimuth (°)	Vertical Depth (ft)	+N/-S (ft)	+E/-W (ft)	Map Northing (usft)	Map Easting (usft)	Latitude	Longitude
15,600.00	90.00	270.77	7,135.00	413.73	-8,075.19	14,745,454.25	1,747,663.55	40.59997213	-104.61364291
15,700.00	90.00	270.77	7,135.00	415.08	-8,175.18	14,745,455.12	1,747,563.56	40.59997574	-104.61400312
15,800.00	90.00	270.77	7,135.00	416.42	-8,275.17	14,745,456.00	1,747,463.56	40.59997935	-104.61436334
15,900.00	90.00	270.77	7,135.00	417.77	-8,375.16	14,745,456.87	1,747,363.57	40.59998295	-104.61472355
16,000.00	90.00	270.77	7,135.00	419.12	-8,475.15	14,745,457.75	1,747,263.57	40.59998655	-104.61508377
16,100.00	90.00	270.77	7,135.00	420.46	-8,575.14	14,745,458.62	1,747,163.57	40.59999015	-104.61544398
16,200.00	90.00	270.77	7,135.00	421.81	-8,675.13	14,745,459.50	1,747,063.58	40.59999375	-104.61580419
16,300.00	90.00	270.77	7,135.00	423.16	-8,775.13	14,745,460.37	1,746,963.58	40.59999735	-104.61616441
16,400.00	90.00	270.77	7,135.00	424.50	-8,875.12	14,745,461.25	1,746,863.59	40.60000095	-104.61652462
16,500.00	90.00	270.77	7,135.00	425.85	-8,975.11	14,745,462.12	1,746,763.59	40.60000455	-104.61688484
16,600.00	90.00	270.77	7,135.00	427.20	-9,075.10	14,745,463.00	1,746,663.59	40.60000815	-104.61724505
16,700.00	90.00	270.77	7,135.00	428.54	-9,175.09	14,745,463.87	1,746,563.60	40.60001174	-104.61760527
16,800.00	90.00	270.77	7,135.00	429.89	-9,275.08	14,745,464.75	1,746,463.60	40.60001533	-104.61796548
16,900.00	90.00	270.77	7,135.00	431.24	-9,375.07	14,745,465.62	1,746,363.61	40.60001893	-104.61832570
16,912.47	90.00	270.77	7,135.00	431.40	-9,387.54	14,745,465.73	1,746,351.14	40.60001938	-104.61837061
PBHL/TD 16912.47 MD/7135.00 TVD									

Design Targets									
Target Name - hit/miss target - Shape	Dip Angle (°)	Dip Dir. (°)	TVD (ft)	+N/-S (ft)	+E/-W (ft)	Northing (usft)	Easting (usft)	Latitude	Longitude
Dotsero 6-010-02L LP 3- - plan hits target center - Point	0.00	0.00	7,135.00	304.95	2.15	14,745,383.59	1,755,741.30	40.59967711	-104.58454472
Dotsero 6-010-02L PBHL - plan hits target center - Point	0.00	0.00	7,135.00	431.40	-9,387.54	14,745,465.73	1,746,351.14	40.60001938	-104.61837061

Plan Annotations				
Measured Depth (ft)	Vertical Depth (ft)	Local Coordinates		Comment
		+N/-S (ft)	+E/-W (ft)	
3,000.00	3,000.00	0.00	0.00	KOP Begin 2°/100' build
3,546.55	3,543.24	20.62	47.71	Begin 10.93° tangent
6,522.28	6,464.98	244.44	565.70	Begin 10°/100' build/turn
7,521.93	7,135.00	304.95	2.15	Begin 90.00° lateral
16,912.47	7,135.00	431.40	-9,387.54	PBHL/TD 16912.47 MD/7135.00 TVD