

Weld County, Colorado

Section 06-T07N-R64W

Dotsero 6-09-01L

plan1

Section Details

Sec	MD	Inc	Azi	TVD	+N/-S	+E/-W	Dleg	Vsect	Annotation
1	0.00	0.00	0.00	0.00	0.00	0.00	0.00	0.00	
2	3000.00	0.00	0.00	3000.00	0.00	0.00	0.00	0.00	KOP Begin 2°/100' build
3	3628.02	12.56	55.96	3623.00	38.38	56.81	2.00	-54.25	Begin 12.56° tangent
4	6437.39	12.56	55.96	6365.14	380.37	563.07	0.00	-537.69	Begin 10°/100' build/turn
5	7440.24	90.00	270.77	7035.00	473.15	0.52	10.00	29.63	Begin 90.00° lateral
6	16832.71	90.00	270.77	7035.00	599.68	-9391.09	0.00	9410.22	PBHL/TD 16832.71 MD/7035.00 TVD

DESIGN TARGET DETAILS

Name	TVD	+N/-S	+E/-W	Northing	Easting	Latitude	Longitude
Dotsero 6-09-01L LP 3218 FNL 470 FEL	7035.00	473.15	0.52	14745601.77	1755738.17	40.60027624	-104.58455229
Dotsero 6-09-01L PBHL 3218 FNL 470 FWL	7035.00	599.68	-9391.09	14745683.98	1746346.08	40.60061872	-104.61838543

Dotsero 6-09-01L			
Surf loc: 1576 FSL 475 FEL Section 06-T07N-R64W			
NAD83 Colorado - HARN			
Universal Transverse Mercator (US Survey Feet)			
Zone 13N (108 W to 102 W)			
RKB=4995+24 @ 5019.00ft			
Northing	Easting	Latitude	Longitude
14745128.62	1755739.88	40.59897703	-104.58455418

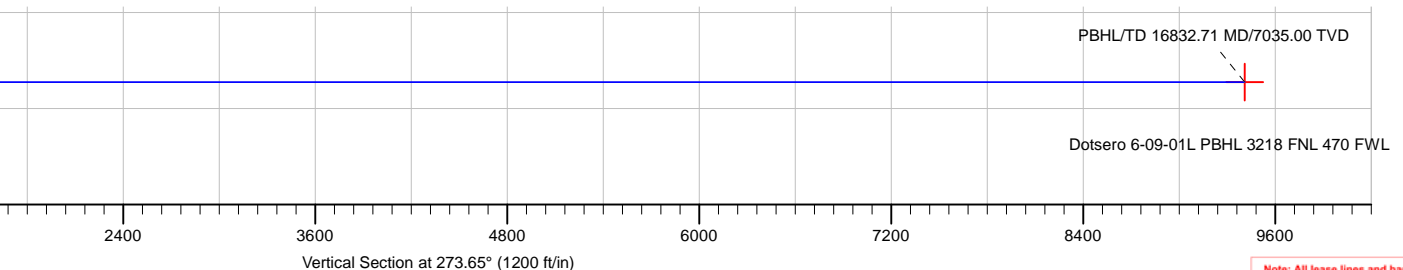
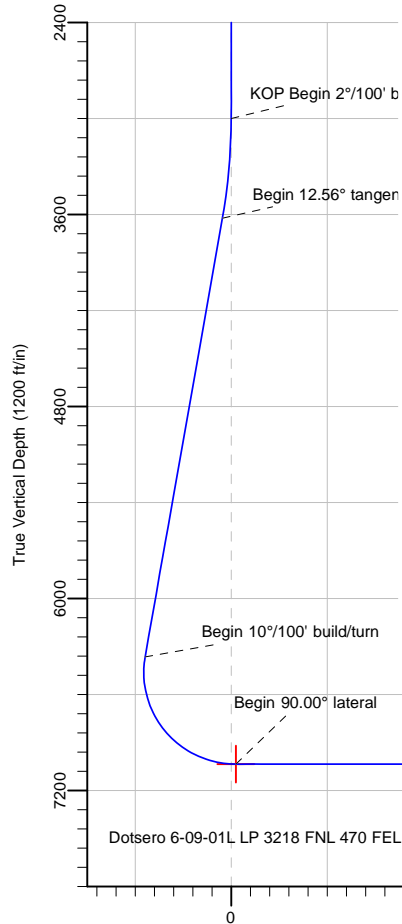
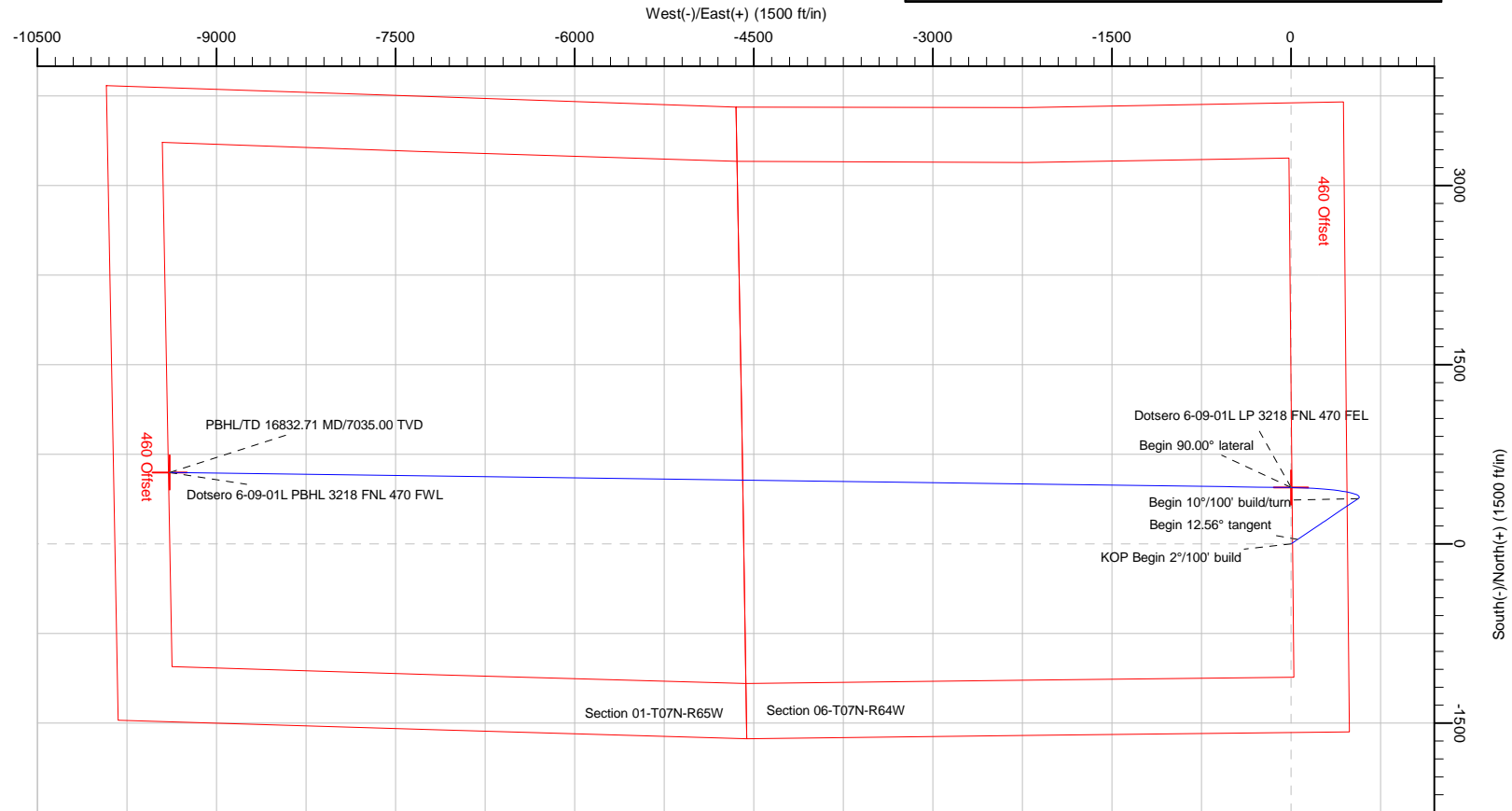


Azimuths to True North
Magnetic North: 7.98°

Magnetic Field
Strength: 52359.2snT
Dip Angle: 66.98°
Date: 2/19/2018
Model: HDGM

Azimuth Corrections:

To convert a Magnetic Direction to a True Direction, Add 7.98° East



Note: All lease lines and hard lines are estimates only and are subject to customers approval.

Database:	DB_Jul2216dt_v14	Local Co-ordinate Reference:	Well Dotsero 6-09-01L
Company:	Confluence Resources	TVD Reference:	RKB=4995+24 @ 5019.00ft
Project:	Weld County, Colorado	MD Reference:	RKB=4995+24 @ 5019.00ft
Site:	Section 06-T07N-R64W	North Reference:	True
Well:	Dotsero 6-09-01L	Survey Calculation Method:	Minimum Curvature
Wellbore:	Original Hole		
Design:	plan1		

Project	Weld County, Colorado		
Map System:	Universal Transverse Mercator (US Survey Feet)	System Datum:	Mean Sea Level
Geo Datum:	NAD83 Colorado - HARN		
Map Zone:	Zone 13N (108 W to 102 W)		

Site		Section 06-T07N-R64W			
Site Position:		Northing:	14,746,184.54 usft	Latitude:	40.60187654
From:	Map	Easting:	1,755,730.03 usft	Longitude:	-104.58457171
Position Uncertainty:	0.00 ft	Slot Radius:	13-3/16 "	Grid Convergence:	0.27 °

Well	Dotsero 6-09-01L, Surf loc: 1576 FSL 475 FEL Section 06-T07N-R64W					
Well Position	+N/-S	-1,055.96 ft	Northing:	14,745,128.62 usft	Latitude:	40.59897703
	+E/-W	4.87 ft	Easting:	1,755,739.88 usft	Longitude:	-104.58455417
Position Uncertainty		0.00 ft	Wellhead Elevation:		Ground Level:	4,995.00 ft

Wellbore	Original Hole				
Magnetics	Model Name	Sample Date	Declination (°)	Dip Angle (°)	Field Strength (nT)
	HDGM	2/19/2018	7.98	66.98	52,359.20000000

Design	plan1			
Audit Notes:				
Version:	Phase:	PLAN	Tie On Depth:	0.00
Vertical Section:	Depth From (TVD) (ft)	+N/-S (ft)	+E/-W (ft)	Direction (°)
	0.00	0.00	0.00	273.65

Plan Survey Tool Program	Date	2/19/2018		
Depth From (ft)	Depth To (ft)	Survey (Wellbore)	Tool Name	Remarks
1	0.00	16,832.71	plan1 (Original Hole)	

Plan Sections										
Measured Depth (ft)	Inclination (°)	Azimuth (°)	Vertical Depth (ft)	+N/-S (ft)	+E/-W (ft)	Dogleg Rate (°/100ft)	Build Rate (°/100ft)	Turn Rate (°/100ft)	TFO (°)	Target
0.00	0.00	0.00	0.00	0.00	0.00	0.00	0.00	0.00	0.00	
3,000.00	0.00	0.00	3,000.00	0.00	0.00	0.00	0.00	0.00	0.00	
3,628.02	12.56	55.96	3,623.00	38.38	56.81	2.00	2.00	0.00	55.96	
6,437.39	12.56	55.96	6,365.14	380.37	563.07	0.00	0.00	0.00	0.00	
7,440.24	90.00	270.77	7,035.00	473.15	0.52	10.00	7.72	-14.48	-144.54	Dotsero 6-09-01L LP :
16,832.71	90.00	270.77	7,035.00	599.68	-9,391.09	0.00	0.00	0.00	0.00	Dotsero 6-09-01L PBI

Database:	DB_Jul2216dt_v14	Local Co-ordinate Reference:	Well Dotsero 6-09-01L
Company:	Confluence Resources	TVD Reference:	RKB=4995+24 @ 5019.00ft
Project:	Weld County, Colorado	MD Reference:	RKB=4995+24 @ 5019.00ft
Site:	Section 06-T07N-R64W	North Reference:	True
Well:	Dotsero 6-09-01L	Survey Calculation Method:	Minimum Curvature
Wellbore:	Original Hole		
Design:	plan1		

Planned Survey									
Measured Depth (ft)	Inclination (°)	Azimuth (°)	Vertical Depth (ft)	+N/-S (ft)	+E/-W (ft)	Vertical Section (ft)	Dogleg Rate (°/100ft)	Build Rate (°/100ft)	Turn Rate (°/100ft)
0.00	0.00	0.00	0.00	0.00	0.00	0.00	0.00	0.00	0.00
100.00	0.00	0.00	100.00	0.00	0.00	0.00	0.00	0.00	0.00
200.00	0.00	0.00	200.00	0.00	0.00	0.00	0.00	0.00	0.00
300.00	0.00	0.00	300.00	0.00	0.00	0.00	0.00	0.00	0.00
400.00	0.00	0.00	400.00	0.00	0.00	0.00	0.00	0.00	0.00
500.00	0.00	0.00	500.00	0.00	0.00	0.00	0.00	0.00	0.00
600.00	0.00	0.00	600.00	0.00	0.00	0.00	0.00	0.00	0.00
700.00	0.00	0.00	700.00	0.00	0.00	0.00	0.00	0.00	0.00
800.00	0.00	0.00	800.00	0.00	0.00	0.00	0.00	0.00	0.00
900.00	0.00	0.00	900.00	0.00	0.00	0.00	0.00	0.00	0.00
1,000.00	0.00	0.00	1,000.00	0.00	0.00	0.00	0.00	0.00	0.00
1,100.00	0.00	0.00	1,100.00	0.00	0.00	0.00	0.00	0.00	0.00
1,200.00	0.00	0.00	1,200.00	0.00	0.00	0.00	0.00	0.00	0.00
1,300.00	0.00	0.00	1,300.00	0.00	0.00	0.00	0.00	0.00	0.00
1,400.00	0.00	0.00	1,400.00	0.00	0.00	0.00	0.00	0.00	0.00
1,500.00	0.00	0.00	1,500.00	0.00	0.00	0.00	0.00	0.00	0.00
1,600.00	0.00	0.00	1,600.00	0.00	0.00	0.00	0.00	0.00	0.00
1,700.00	0.00	0.00	1,700.00	0.00	0.00	0.00	0.00	0.00	0.00
1,800.00	0.00	0.00	1,800.00	0.00	0.00	0.00	0.00	0.00	0.00
1,900.00	0.00	0.00	1,900.00	0.00	0.00	0.00	0.00	0.00	0.00
2,000.00	0.00	0.00	2,000.00	0.00	0.00	0.00	0.00	0.00	0.00
2,100.00	0.00	0.00	2,100.00	0.00	0.00	0.00	0.00	0.00	0.00
2,200.00	0.00	0.00	2,200.00	0.00	0.00	0.00	0.00	0.00	0.00
2,300.00	0.00	0.00	2,300.00	0.00	0.00	0.00	0.00	0.00	0.00
2,400.00	0.00	0.00	2,400.00	0.00	0.00	0.00	0.00	0.00	0.00
2,500.00	0.00	0.00	2,500.00	0.00	0.00	0.00	0.00	0.00	0.00
2,600.00	0.00	0.00	2,600.00	0.00	0.00	0.00	0.00	0.00	0.00
2,700.00	0.00	0.00	2,700.00	0.00	0.00	0.00	0.00	0.00	0.00
2,800.00	0.00	0.00	2,800.00	0.00	0.00	0.00	0.00	0.00	0.00
2,900.00	0.00	0.00	2,900.00	0.00	0.00	0.00	0.00	0.00	0.00
3,000.00	0.00	0.00	3,000.00	0.00	0.00	0.00	0.00	0.00	0.00
KOP Begin 2°/100' build									
3,100.00	2.00	55.96	3,099.98	0.98	1.45	-1.38	2.00	2.00	0.00
3,200.00	4.00	55.96	3,199.84	3.91	5.78	-5.52	2.00	2.00	0.00
3,300.00	6.00	55.96	3,299.45	8.78	13.00	-12.42	2.00	2.00	0.00
3,400.00	8.00	55.96	3,398.70	15.61	23.10	-22.06	2.00	2.00	0.00
3,500.00	10.00	55.96	3,497.47	24.36	36.06	-34.44	2.00	2.00	0.00
3,600.00	12.00	55.96	3,595.62	35.04	51.88	-49.54	2.00	2.00	0.00
3,628.02	12.56	55.96	3,623.00	38.38	56.81	-54.25	2.00	2.00	0.00
Begin 12.56° tangent									
3,700.00	12.56	55.96	3,693.26	47.14	69.79	-66.64	0.00	0.00	0.00
3,800.00	12.56	55.96	3,790.87	59.31	87.81	-83.85	0.00	0.00	0.00
3,900.00	12.56	55.96	3,888.47	71.49	105.83	-101.06	0.00	0.00	0.00
4,000.00	12.56	55.96	3,986.08	83.66	123.85	-118.26	0.00	0.00	0.00
4,100.00	12.56	55.96	4,083.69	95.83	141.87	-135.47	0.00	0.00	0.00
4,200.00	12.56	55.96	4,181.29	108.01	159.89	-152.68	0.00	0.00	0.00
4,300.00	12.56	55.96	4,278.90	120.18	177.91	-169.89	0.00	0.00	0.00
4,400.00	12.56	55.96	4,376.51	132.35	195.93	-187.10	0.00	0.00	0.00
4,500.00	12.56	55.96	4,474.11	144.53	213.95	-204.30	0.00	0.00	0.00
4,600.00	12.56	55.96	4,571.72	156.70	231.97	-221.51	0.00	0.00	0.00
4,700.00	12.56	55.96	4,669.33	168.87	249.99	-238.72	0.00	0.00	0.00
4,800.00	12.56	55.96	4,766.93	181.05	268.01	-255.93	0.00	0.00	0.00
4,900.00	12.56	55.96	4,864.54	193.22	286.03	-273.14	0.00	0.00	0.00

Database:	DB_Jul2216dt_v14	Local Co-ordinate Reference:	Well Dotsero 6-09-01L
Company:	Confluence Resources	TVD Reference:	RKB=4995+24 @ 5019.00ft
Project:	Weld County, Colorado	MD Reference:	RKB=4995+24 @ 5019.00ft
Site:	Section 06-T07N-R64W	North Reference:	True
Well:	Dotsero 6-09-01L	Survey Calculation Method:	Minimum Curvature
Wellbore:	Original Hole		
Design:	plan1		

Planned Survey									
Measured Depth (ft)	Inclination (°)	Azimuth (°)	Vertical Depth (ft)	+N/-S (ft)	+E/-W (ft)	Vertical Section (ft)	Dogleg Rate (°/100ft)	Build Rate (°/100ft)	Turn Rate (°/100ft)
5,000.00	12.56	55.96	4,962.15	205.39	304.05	-290.34	0.00	0.00	0.00
5,100.00	12.56	55.96	5,059.75	217.56	322.07	-307.55	0.00	0.00	0.00
5,200.00	12.56	55.96	5,157.36	229.74	340.09	-324.76	0.00	0.00	0.00
5,300.00	12.56	55.96	5,254.97	241.91	358.11	-341.97	0.00	0.00	0.00
5,400.00	12.56	55.96	5,352.57	254.08	376.13	-359.18	0.00	0.00	0.00
5,500.00	12.56	55.96	5,450.18	266.26	394.15	-376.38	0.00	0.00	0.00
5,600.00	12.56	55.96	5,547.79	278.43	412.17	-393.59	0.00	0.00	0.00
5,700.00	12.56	55.96	5,645.39	290.60	430.19	-410.80	0.00	0.00	0.00
5,800.00	12.56	55.96	5,743.00	302.78	448.21	-428.01	0.00	0.00	0.00
5,900.00	12.56	55.96	5,840.61	314.95	466.23	-445.22	0.00	0.00	0.00
6,000.00	12.56	55.96	5,938.21	327.12	484.26	-462.42	0.00	0.00	0.00
6,100.00	12.56	55.96	6,035.82	339.30	502.28	-479.63	0.00	0.00	0.00
6,200.00	12.56	55.96	6,133.43	351.47	520.30	-496.84	0.00	0.00	0.00
6,300.00	12.56	55.96	6,231.04	363.64	538.32	-514.05	0.00	0.00	0.00
6,400.00	12.56	55.96	6,328.64	375.81	556.34	-531.26	0.00	0.00	0.00
6,437.39	12.56	55.96	6,365.14	380.37	563.07	-537.69	0.00	0.00	0.00
Begin 10°/100' build/turn									
6,500.00	8.29	29.92	6,426.73	388.09	570.97	-545.08	10.00	-6.83	-41.60
6,600.00	9.38	321.09	6,525.79	400.72	569.44	-542.75	10.00	1.10	-68.82
6,700.00	17.50	294.56	6,623.06	413.34	550.60	-523.14	10.00	8.12	-26.54
6,800.00	26.90	285.29	6,715.57	425.59	515.01	-486.84	10.00	9.40	-9.27
6,900.00	36.60	280.63	6,800.51	437.09	463.75	-434.96	10.00	9.70	-4.66
7,000.00	46.42	277.72	6,875.31	447.48	398.40	-369.07	10.00	9.81	-2.91
7,100.00	56.28	275.64	6,937.69	456.46	320.92	-291.18	10.00	9.87	-2.08
7,200.00	66.18	273.99	6,985.76	463.75	233.68	-203.65	10.00	9.90	-1.65
7,300.00	76.09	272.58	7,018.06	469.13	139.33	-109.15	10.00	9.91	-1.41
7,400.00	86.01	271.28	7,033.60	472.43	40.73	-10.54	10.00	9.92	-1.30
7,440.24	90.00	270.77	7,035.00	473.15	0.52	29.63	10.00	9.92	-1.26
Begin 90.00° lateral									
7,500.00	90.00	270.77	7,035.00	473.96	-59.23	89.31	0.00	0.00	0.00
7,600.00	90.00	270.77	7,035.00	475.31	-159.22	189.19	0.00	0.00	0.00
7,700.00	90.00	270.77	7,035.00	476.65	-259.21	289.06	0.00	0.00	0.00
7,800.00	90.00	270.77	7,035.00	478.00	-359.20	388.93	0.00	0.00	0.00
7,900.00	90.00	270.77	7,035.00	479.35	-459.19	488.81	0.00	0.00	0.00
8,000.00	90.00	270.77	7,035.00	480.69	-559.18	588.68	0.00	0.00	0.00
8,100.00	90.00	270.77	7,035.00	482.04	-659.17	688.55	0.00	0.00	0.00
8,200.00	90.00	270.77	7,035.00	483.39	-759.16	788.43	0.00	0.00	0.00
8,300.00	90.00	270.77	7,035.00	484.74	-859.16	888.30	0.00	0.00	0.00
8,400.00	90.00	270.77	7,035.00	486.08	-959.15	988.17	0.00	0.00	0.00
8,500.00	90.00	270.77	7,035.00	487.43	-1,059.14	1,088.05	0.00	0.00	0.00
8,600.00	90.00	270.77	7,035.00	488.78	-1,159.13	1,187.92	0.00	0.00	0.00
8,700.00	90.00	270.77	7,035.00	490.12	-1,259.12	1,287.79	0.00	0.00	0.00
8,800.00	90.00	270.77	7,035.00	491.47	-1,359.11	1,387.67	0.00	0.00	0.00
8,900.00	90.00	270.77	7,035.00	492.82	-1,459.10	1,487.54	0.00	0.00	0.00
9,000.00	90.00	270.77	7,035.00	494.17	-1,559.09	1,587.41	0.00	0.00	0.00
9,100.00	90.00	270.77	7,035.00	495.51	-1,659.08	1,687.29	0.00	0.00	0.00
9,200.00	90.00	270.77	7,035.00	496.86	-1,759.07	1,787.16	0.00	0.00	0.00
9,300.00	90.00	270.77	7,035.00	498.21	-1,859.06	1,887.04	0.00	0.00	0.00
9,400.00	90.00	270.77	7,035.00	499.55	-1,959.06	1,986.91	0.00	0.00	0.00
9,500.00	90.00	270.77	7,035.00	500.90	-2,059.05	2,086.78	0.00	0.00	0.00
9,600.00	90.00	270.77	7,035.00	502.25	-2,159.04	2,186.66	0.00	0.00	0.00
9,700.00	90.00	270.77	7,035.00	503.60	-2,259.03	2,286.53	0.00	0.00	0.00
9,800.00	90.00	270.77	7,035.00	504.94	-2,359.02	2,386.40	0.00	0.00	0.00
9,900.00	90.00	270.77	7,035.00	506.29	-2,459.01	2,486.28	0.00	0.00	0.00

Database:	DB_Jul2216dt_v14	Local Co-ordinate Reference:	Well Dotsero 6-09-01L
Company:	Confluence Resources	TVD Reference:	RKB=4995+24 @ 5019.00ft
Project:	Weld County, Colorado	MD Reference:	RKB=4995+24 @ 5019.00ft
Site:	Section 06-T07N-R64W	North Reference:	True
Well:	Dotsero 6-09-01L	Survey Calculation Method:	Minimum Curvature
Wellbore:	Original Hole		
Design:	plan1		

Planned Survey									
Measured Depth (ft)	Inclination (°)	Azimuth (°)	Vertical Depth (ft)	+N/-S (ft)	+E/-W (ft)	Vertical Section (ft)	Dogleg Rate (°/100ft)	Build Rate (°/100ft)	Turn Rate (°/100ft)
10,000.00	90.00	270.77	7,035.00	507.64	-2,559.00	2,586.15	0.00	0.00	0.00
10,100.00	90.00	270.77	7,035.00	508.98	-2,658.99	2,686.02	0.00	0.00	0.00
10,200.00	90.00	270.77	7,035.00	510.33	-2,758.98	2,785.90	0.00	0.00	0.00
10,300.00	90.00	270.77	7,035.00	511.68	-2,858.97	2,885.77	0.00	0.00	0.00
10,400.00	90.00	270.77	7,035.00	513.03	-2,958.97	2,985.64	0.00	0.00	0.00
10,500.00	90.00	270.77	7,035.00	514.37	-3,058.96	3,085.52	0.00	0.00	0.00
10,600.00	90.00	270.77	7,035.00	515.72	-3,158.95	3,185.39	0.00	0.00	0.00
10,700.00	90.00	270.77	7,035.00	517.07	-3,258.94	3,285.26	0.00	0.00	0.00
10,800.00	90.00	270.77	7,035.00	518.41	-3,358.93	3,385.14	0.00	0.00	0.00
10,900.00	90.00	270.77	7,035.00	519.76	-3,458.92	3,485.01	0.00	0.00	0.00
11,000.00	90.00	270.77	7,035.00	521.11	-3,558.91	3,584.89	0.00	0.00	0.00
11,100.00	90.00	270.77	7,035.00	522.46	-3,658.90	3,684.76	0.00	0.00	0.00
11,200.00	90.00	270.77	7,035.00	523.80	-3,758.89	3,784.63	0.00	0.00	0.00
11,300.00	90.00	270.77	7,035.00	525.15	-3,858.88	3,884.51	0.00	0.00	0.00
11,400.00	90.00	270.77	7,035.00	526.50	-3,958.87	3,984.38	0.00	0.00	0.00
11,500.00	90.00	270.77	7,035.00	527.84	-4,058.87	4,084.25	0.00	0.00	0.00
11,600.00	90.00	270.77	7,035.00	529.19	-4,158.86	4,184.13	0.00	0.00	0.00
11,700.00	90.00	270.77	7,035.00	530.54	-4,258.85	4,284.00	0.00	0.00	0.00
11,800.00	90.00	270.77	7,035.00	531.89	-4,358.84	4,383.87	0.00	0.00	0.00
11,900.00	90.00	270.77	7,035.00	533.23	-4,458.83	4,483.75	0.00	0.00	0.00
12,000.00	90.00	270.77	7,035.00	534.58	-4,558.82	4,583.62	0.00	0.00	0.00
12,100.00	90.00	270.77	7,035.00	535.93	-4,658.81	4,683.49	0.00	0.00	0.00
12,200.00	90.00	270.77	7,035.00	537.27	-4,758.80	4,783.37	0.00	0.00	0.00
12,300.00	90.00	270.77	7,035.00	538.62	-4,858.79	4,883.24	0.00	0.00	0.00
12,400.00	90.00	270.77	7,035.00	539.97	-4,958.78	4,983.11	0.00	0.00	0.00
12,500.00	90.00	270.77	7,035.00	541.32	-5,058.77	5,082.99	0.00	0.00	0.00
12,600.00	90.00	270.77	7,035.00	542.66	-5,158.77	5,182.86	0.00	0.00	0.00
12,700.00	90.00	270.77	7,035.00	544.01	-5,258.76	5,282.74	0.00	0.00	0.00
12,800.00	90.00	270.77	7,035.00	545.36	-5,358.75	5,382.61	0.00	0.00	0.00
12,900.00	90.00	270.77	7,035.00	546.70	-5,458.74	5,482.48	0.00	0.00	0.00
13,000.00	90.00	270.77	7,035.00	548.05	-5,558.73	5,582.36	0.00	0.00	0.00
13,100.00	90.00	270.77	7,035.00	549.40	-5,658.72	5,682.23	0.00	0.00	0.00
13,200.00	90.00	270.77	7,035.00	550.75	-5,758.71	5,782.10	0.00	0.00	0.00
13,300.00	90.00	270.77	7,035.00	552.09	-5,858.70	5,881.98	0.00	0.00	0.00
13,400.00	90.00	270.77	7,035.00	553.44	-5,958.69	5,981.85	0.00	0.00	0.00
13,500.00	90.00	270.77	7,035.00	554.79	-6,058.68	6,081.72	0.00	0.00	0.00
13,600.00	90.00	270.77	7,035.00	556.13	-6,158.67	6,181.60	0.00	0.00	0.00
13,700.00	90.00	270.77	7,035.00	557.48	-6,258.67	6,281.47	0.00	0.00	0.00
13,800.00	90.00	270.77	7,035.00	558.83	-6,358.66	6,381.34	0.00	0.00	0.00
13,900.00	90.00	270.77	7,035.00	560.18	-6,458.65	6,481.22	0.00	0.00	0.00
14,000.00	90.00	270.77	7,035.00	561.52	-6,558.64	6,581.09	0.00	0.00	0.00
14,100.00	90.00	270.77	7,035.00	562.87	-6,658.63	6,680.96	0.00	0.00	0.00
14,200.00	90.00	270.77	7,035.00	564.22	-6,758.62	6,780.84	0.00	0.00	0.00
14,300.00	90.00	270.77	7,035.00	565.56	-6,858.61	6,880.71	0.00	0.00	0.00
14,400.00	90.00	270.77	7,035.00	566.91	-6,958.60	6,980.59	0.00	0.00	0.00
14,500.00	90.00	270.77	7,035.00	568.26	-7,058.59	7,080.46	0.00	0.00	0.00
14,600.00	90.00	270.77	7,035.00	569.61	-7,158.58	7,180.33	0.00	0.00	0.00
14,700.00	90.00	270.77	7,035.00	570.95	-7,258.58	7,280.21	0.00	0.00	0.00
14,800.00	90.00	270.77	7,035.00	572.30	-7,358.57	7,380.08	0.00	0.00	0.00
14,900.00	90.00	270.77	7,035.00	573.65	-7,458.56	7,479.95	0.00	0.00	0.00
15,000.00	90.00	270.77	7,035.00	574.99	-7,558.55	7,579.83	0.00	0.00	0.00
15,100.00	90.00	270.77	7,035.00	576.34	-7,658.54	7,679.70	0.00	0.00	0.00
15,200.00	90.00	270.77	7,035.00	577.69	-7,758.53	7,779.57	0.00	0.00	0.00
15,300.00	90.00	270.77	7,035.00	579.04	-7,858.52	7,879.45	0.00	0.00	0.00

Database:	DB_Jul2216dt_v14	Local Co-ordinate Reference:	Well Dotsero 6-09-01L
Company:	Confluence Resources	TVD Reference:	RKB=4995+24 @ 5019.00ft
Project:	Weld County, Colorado	MD Reference:	RKB=4995+24 @ 5019.00ft
Site:	Section 06-T07N-R64W	North Reference:	True
Well:	Dotsero 6-09-01L	Survey Calculation Method:	Minimum Curvature
Wellbore:	Original Hole		
Design:	plan1		

Planned Survey										
Measured Depth (ft)	Inclination (°)	Azimuth (°)	Vertical Depth (ft)	+N/-S (ft)	+E/-W (ft)	Vertical Section (ft)	Dogleg Rate (°/100ft)	Build Rate (°/100ft)	Turn Rate (°/100ft)	
15,400.00	90.00	270.77	7,035.00	580.38	-7,958.51	7,979.32	0.00	0.00	0.00	
15,500.00	90.00	270.77	7,035.00	581.73	-8,058.50	8,079.19	0.00	0.00	0.00	
15,600.00	90.00	270.77	7,035.00	583.08	-8,158.49	8,179.07	0.00	0.00	0.00	
15,700.00	90.00	270.77	7,035.00	584.42	-8,258.48	8,278.94	0.00	0.00	0.00	
15,800.00	90.00	270.77	7,035.00	585.77	-8,358.48	8,378.82	0.00	0.00	0.00	
15,900.00	90.00	270.77	7,035.00	587.12	-8,458.47	8,478.69	0.00	0.00	0.00	
16,000.00	90.00	270.77	7,035.00	588.47	-8,558.46	8,578.56	0.00	0.00	0.00	
16,100.00	90.00	270.77	7,035.00	589.81	-8,658.45	8,678.44	0.00	0.00	0.00	
16,200.00	90.00	270.77	7,035.00	591.16	-8,758.44	8,778.31	0.00	0.00	0.00	
16,300.00	90.00	270.77	7,035.00	592.51	-8,858.43	8,878.18	0.00	0.00	0.00	
16,400.00	90.00	270.77	7,035.00	593.85	-8,958.42	8,978.06	0.00	0.00	0.00	
16,500.00	90.00	270.77	7,035.00	595.20	-9,058.41	9,077.93	0.00	0.00	0.00	
16,600.00	90.00	270.77	7,035.00	596.55	-9,158.40	9,177.80	0.00	0.00	0.00	
16,700.00	90.00	270.77	7,035.00	597.90	-9,258.39	9,277.68	0.00	0.00	0.00	
16,800.00	90.00	270.77	7,035.00	599.24	-9,358.38	9,377.55	0.00	0.00	0.00	
16,832.71	90.00	270.77	7,035.00	599.68	-9,391.09	9,410.22	0.00	0.00	0.00	
PBHL/TD 16832.71 MD/7035.00 TVD										

Design Targets										
Target Name	Dip Angle (°)	Dip Dir. (°)	TVD (ft)	+N/-S (ft)	+E/-W (ft)	Northing (usft)	Easting (usft)	Latitude		Longitude
- hit/miss target										
- Shape										
Dotsero 6-09-01L LP 32	0.00	0.00	7,035.00	473.15	0.52	14,745,601.77	1,755,738.17	40.60027624		-104.58455229
- plan hits target center										
- Point										
Dotsero 6-09-01L PBHL	0.00	0.00	7,035.00	599.68	-9,391.09	14,745,683.98	1,746,346.08	40.60061872		-104.61838543
- plan hits target center										
- Point										

Plan Annotations					
Measured Depth (ft)	Vertical Depth (ft)	Local Coordinates			
		+N/-S (ft)	+E/-W (ft)	Comment	
3,000.00	3,000.00	0.00	0.00	KOP Begin 2°/100' build	
3,628.02	3,623.00	38.38	56.81	Begin 12.56° tangent	
6,437.39	6,365.14	380.37	563.07	Begin 10°/100' build/turn	
7,440.24	7,035.00	473.15	0.52	Begin 90.00° lateral	
16,832.71	7,035.00	599.68	-9,391.09	PBHL/TD 16832.71 MD/7035.00 TVD	

Database:	DB_Jul2216dt_v14	Local Co-ordinate Reference:	Well Dotsero 6-09-01L
Company:	Confluence Resources	TVD Reference:	RKB=4995+24 @ 5019.00ft
Project:	Weld County, Colorado	MD Reference:	RKB=4995+24 @ 5019.00ft
Site:	Section 06-T07N-R64W	North Reference:	True
Well:	Dotsero 6-09-01L	Survey Calculation Method:	Minimum Curvature
Wellbore:	Original Hole		
Design:	plan1		

Project	Weld County, Colorado		
Map System:	Universal Transverse Mercator (US Survey Feet)	System Datum:	Mean Sea Level
Geo Datum:	NAD83 Colorado - HARN		
Map Zone:	Zone 13N (108 W to 102 W)		

Site	Section 06-T07N-R64W		
Site Position:		Northing:	14,746,184.54 usft
From:	Map	Easting:	1,755,730.03 usft
Position Uncertainty:	0.00 ft	Slot Radius:	13-3/16 "
		Latitude:	40.60187654
		Longitude:	-104.58457171
		Grid Convergence:	0.27 °

Well	Dotsero 6-09-01L, Surf loc: 1576 FSL 475 FEL Section 06-T07N-R64W		
Well Position	+N/-S	0.00 ft	Northing: 14,745,128.62 usft
	+E/-W	0.00 ft	Easting: 1,755,739.88 usft
Position Uncertainty	0.00 ft	Wellhead Elevation:	Latitude: 40.59897703
			Longitude: -104.58455417
			Ground Level: 4,995.00 ft

Wellbore	Original Hole				
Magnetics	Model Name	Sample Date	Declination (°)	Dip Angle (°)	Field Strength (nT)
	HDGM	2/19/2018	7.98	66.98	52,359.20000000

Design	plan1			
Audit Notes:				
Version:	Phase:	PLAN	Tie On Depth:	0.00
Vertical Section:	Depth From (TVD) (ft)	+N/-S (ft)	+E/-W (ft)	Direction (°)
	0.00	0.00	0.00	273.65

Plan Survey Tool Program	Date	2/19/2018		
Depth From (ft)	Depth To (ft)	Survey (Wellbore)	Tool Name	Remarks
1	0.00	16,832.71 plan1 (Original Hole)		

Plan Sections										
Measured Depth (ft)	Inclination (°)	Azimuth (°)	Vertical Depth (ft)	+N/-S (ft)	+E/-W (ft)	Dogleg Rate (°/100ft)	Build Rate (°/100ft)	Turn Rate (°/100ft)	TFO (°)	Target
0.00	0.00	0.00	0.00	0.00	0.00	0.00	0.00	0.00	0.00	
3,000.00	0.00	0.00	3,000.00	0.00	0.00	0.00	0.00	0.00	0.00	
3,628.02	12.56	55.96	3,623.00	38.38	56.81	2.00	2.00	0.00	55.96	
6,437.39	12.56	55.96	6,365.14	380.37	563.07	0.00	0.00	0.00	0.00	
7,440.24	90.00	270.77	7,035.00	473.15	0.52	10.00	7.72	-14.48	-144.54	Dotsero 6-09-01L LP :
16,832.71	90.00	270.77	7,035.00	599.68	-9,391.09	0.00	0.00	0.00	0.00	Dotsero 6-09-01L PBI

Database:	DB_Jul2216dt_v14	Local Co-ordinate Reference:	Well Dotsero 6-09-01L
Company:	Confluence Resources	TVD Reference:	RKB=4995+24 @ 5019.00ft
Project:	Weld County, Colorado	MD Reference:	RKB=4995+24 @ 5019.00ft
Site:	Section 06-T07N-R64W	North Reference:	True
Well:	Dotsero 6-09-01L	Survey Calculation Method:	Minimum Curvature
Wellbore:	Original Hole		
Design:	plan1		

Planned Survey									
Measured Depth (ft)	Inclination (°)	Azimuth (°)	Vertical Depth (ft)	+N/-S (ft)	+E/-W (ft)	Map Northing (usft)	Map Easting (usft)	Latitude	Longitude
0.00	0.00	0.00	0.00	0.00	0.00	14,745,128.62	1,755,739.88	40.59897703	-104.58455417
100.00	0.00	0.00	100.00	0.00	0.00	14,745,128.62	1,755,739.88	40.59897703	-104.58455417
200.00	0.00	0.00	200.00	0.00	0.00	14,745,128.62	1,755,739.88	40.59897703	-104.58455417
300.00	0.00	0.00	300.00	0.00	0.00	14,745,128.62	1,755,739.88	40.59897703	-104.58455417
400.00	0.00	0.00	400.00	0.00	0.00	14,745,128.62	1,755,739.88	40.59897703	-104.58455417
500.00	0.00	0.00	500.00	0.00	0.00	14,745,128.62	1,755,739.88	40.59897703	-104.58455417
600.00	0.00	0.00	600.00	0.00	0.00	14,745,128.62	1,755,739.88	40.59897703	-104.58455417
700.00	0.00	0.00	700.00	0.00	0.00	14,745,128.62	1,755,739.88	40.59897703	-104.58455417
800.00	0.00	0.00	800.00	0.00	0.00	14,745,128.62	1,755,739.88	40.59897703	-104.58455417
900.00	0.00	0.00	900.00	0.00	0.00	14,745,128.62	1,755,739.88	40.59897703	-104.58455417
1,000.00	0.00	0.00	1,000.00	0.00	0.00	14,745,128.62	1,755,739.88	40.59897703	-104.58455417
1,100.00	0.00	0.00	1,100.00	0.00	0.00	14,745,128.62	1,755,739.88	40.59897703	-104.58455417
1,200.00	0.00	0.00	1,200.00	0.00	0.00	14,745,128.62	1,755,739.88	40.59897703	-104.58455417
1,300.00	0.00	0.00	1,300.00	0.00	0.00	14,745,128.62	1,755,739.88	40.59897703	-104.58455417
1,400.00	0.00	0.00	1,400.00	0.00	0.00	14,745,128.62	1,755,739.88	40.59897703	-104.58455417
1,500.00	0.00	0.00	1,500.00	0.00	0.00	14,745,128.62	1,755,739.88	40.59897703	-104.58455417
1,600.00	0.00	0.00	1,600.00	0.00	0.00	14,745,128.62	1,755,739.88	40.59897703	-104.58455417
1,700.00	0.00	0.00	1,700.00	0.00	0.00	14,745,128.62	1,755,739.88	40.59897703	-104.58455417
1,800.00	0.00	0.00	1,800.00	0.00	0.00	14,745,128.62	1,755,739.88	40.59897703	-104.58455417
1,900.00	0.00	0.00	1,900.00	0.00	0.00	14,745,128.62	1,755,739.88	40.59897703	-104.58455417
2,000.00	0.00	0.00	2,000.00	0.00	0.00	14,745,128.62	1,755,739.88	40.59897703	-104.58455417
2,100.00	0.00	0.00	2,100.00	0.00	0.00	14,745,128.62	1,755,739.88	40.59897703	-104.58455417
2,200.00	0.00	0.00	2,200.00	0.00	0.00	14,745,128.62	1,755,739.88	40.59897703	-104.58455417
2,300.00	0.00	0.00	2,300.00	0.00	0.00	14,745,128.62	1,755,739.88	40.59897703	-104.58455417
2,400.00	0.00	0.00	2,400.00	0.00	0.00	14,745,128.62	1,755,739.88	40.59897703	-104.58455417
2,500.00	0.00	0.00	2,500.00	0.00	0.00	14,745,128.62	1,755,739.88	40.59897703	-104.58455417
2,600.00	0.00	0.00	2,600.00	0.00	0.00	14,745,128.62	1,755,739.88	40.59897703	-104.58455417
2,700.00	0.00	0.00	2,700.00	0.00	0.00	14,745,128.62	1,755,739.88	40.59897703	-104.58455417
2,800.00	0.00	0.00	2,800.00	0.00	0.00	14,745,128.62	1,755,739.88	40.59897703	-104.58455417
2,900.00	0.00	0.00	2,900.00	0.00	0.00	14,745,128.62	1,755,739.88	40.59897703	-104.58455417
3,000.00	0.00	0.00	3,000.00	0.00	0.00	14,745,128.62	1,755,739.88	40.59897703	-104.58455417
KOP Begin 2°/100' build									
3,100.00	2.00	55.96	3,099.98	0.98	1.45	14,745,129.60	1,755,741.32	40.59897971	-104.58454896
3,200.00	4.00	55.96	3,199.84	3.91	5.78	14,745,132.55	1,755,745.64	40.59898775	-104.58453334
3,300.00	6.00	55.96	3,299.45	8.78	13.00	14,745,137.47	1,755,752.84	40.59900115	-104.58450733
3,400.00	8.00	55.96	3,398.70	15.61	23.10	14,745,144.33	1,755,762.91	40.59901988	-104.58447095
3,500.00	10.00	55.96	3,497.47	24.36	36.06	14,745,153.15	1,755,775.83	40.59904392	-104.58442425
3,600.00	12.00	55.96	3,595.62	35.04	51.88	14,745,163.91	1,755,791.59	40.59907325	-104.58436730
3,628.02	12.56	55.96	3,623.00	38.38	56.81	14,745,167.27	1,755,796.51	40.59908241	-104.58434951
Begin 12.56° tangent									
3,700.00	12.56	55.96	3,693.26	47.14	69.79	14,745,176.09	1,755,809.44	40.59910647	-104.58430278
3,800.00	12.56	55.96	3,790.87	59.31	87.81	14,745,188.35	1,755,827.40	40.59913989	-104.58423786
3,900.00	12.56	55.96	3,888.47	71.49	105.83	14,745,200.61	1,755,845.37	40.59917332	-104.58417295
4,000.00	12.56	55.96	3,986.08	83.66	123.85	14,745,212.86	1,755,863.33	40.59920675	-104.58410803
4,100.00	12.56	55.96	4,083.69	95.83	141.87	14,745,225.12	1,755,881.29	40.59924017	-104.58404311
4,200.00	12.56	55.96	4,181.29	108.01	159.89	14,745,237.38	1,755,899.25	40.59927360	-104.58397819
4,300.00	12.56	55.96	4,278.90	120.18	177.91	14,745,249.64	1,755,917.22	40.59930702	-104.58391328
4,400.00	12.56	55.96	4,376.51	132.35	195.93	14,745,261.90	1,755,935.18	40.59934045	-104.58384836
4,500.00	12.56	55.96	4,474.11	144.53	213.95	14,745,274.15	1,755,953.14	40.59937387	-104.58378344
4,600.00	12.56	55.96	4,571.72	156.70	231.97	14,745,286.41	1,755,971.11	40.59940730	-104.58371852
4,700.00	12.56	55.96	4,669.33	168.87	249.99	14,745,298.67	1,755,989.07	40.59944072	-104.58365361
4,800.00	12.56	55.96	4,766.93	181.05	268.01	14,745,310.93	1,756,007.03	40.59947415	-104.58358869
4,900.00	12.56	55.96	4,864.54	193.22	286.03	14,745,323.18	1,756,024.99	40.59950757	-104.58352377
5,000.00	12.56	55.96	4,962.15	205.39	304.05	14,745,335.44	1,756,042.96	40.59954100	-104.58345885

Database:	DB_Jul2216dt_v14	Local Co-ordinate Reference:	Well Dotsero 6-09-01L
Company:	Confluence Resources	TVD Reference:	RKB=4995+24 @ 5019.00ft
Project:	Weld County, Colorado	MD Reference:	RKB=4995+24 @ 5019.00ft
Site:	Section 06-T07N-R64W	North Reference:	True
Well:	Dotsero 6-09-01L	Survey Calculation Method:	Minimum Curvature
Wellbore:	Original Hole		
Design:	plan1		

Planned Survey									
Measured Depth (ft)	Inclination (°)	Azimuth (°)	Vertical Depth (ft)	+N/-S (ft)	+E/-W (ft)	Map Northing (usft)	Map Easting (usft)	Latitude	Longitude
5,100.00	12.56	55.96	5,059.75	217.56	322.07	14,745,347.70	1,756,060.92	40.59957442	-104.58339394
5,200.00	12.56	55.96	5,157.36	229.74	340.09	14,745,359.96	1,756,078.88	40.59960785	-104.58332902
5,300.00	12.56	55.96	5,254.97	241.91	358.11	14,745,372.22	1,756,096.85	40.59964127	-104.58326410
5,400.00	12.56	55.96	5,352.57	254.08	376.13	14,745,384.47	1,756,114.81	40.59967470	-104.58319918
5,500.00	12.56	55.96	5,450.18	266.26	394.15	14,745,396.73	1,756,132.77	40.59970812	-104.58313427
5,600.00	12.56	55.96	5,547.79	278.43	412.17	14,745,408.99	1,756,150.73	40.59974155	-104.58306935
5,700.00	12.56	55.96	5,645.39	290.60	430.19	14,745,421.25	1,756,168.70	40.59977497	-104.58300443
5,800.00	12.56	55.96	5,743.00	302.78	448.21	14,745,433.51	1,756,186.66	40.59980840	-104.58293951
5,900.00	12.56	55.96	5,840.61	314.95	466.23	14,745,445.76	1,756,204.62	40.59984182	-104.58287459
6,000.00	12.56	55.96	5,938.21	327.12	484.26	14,745,458.02	1,756,222.58	40.59987525	-104.58280967
6,100.00	12.56	55.96	6,035.82	339.30	502.28	14,745,470.28	1,756,240.55	40.59990867	-104.58274476
6,200.00	12.56	55.96	6,133.43	351.47	520.30	14,745,482.54	1,756,258.51	40.59994210	-104.58267984
6,300.00	12.56	55.96	6,231.04	363.64	538.32	14,745,494.80	1,756,276.47	40.59997552	-104.58261492
6,400.00	12.56	55.96	6,328.64	375.81	556.34	14,745,507.05	1,756,294.44	40.60000894	-104.58255000
6,437.39	12.56	55.96	6,365.14	380.37	563.07	14,745,511.64	1,756,301.15	40.60002144	-104.58252573
Begin 10°/100' build/turn									
6,500.00	8.29	29.92	6,426.73	388.09	570.97	14,745,519.40	1,756,309.01	40.60004266	-104.58249727
6,600.00	9.38	321.09	6,525.79	400.72	569.44	14,745,532.02	1,756,307.42	40.60007732	-104.58250278
6,700.00	17.50	294.56	6,623.06	413.34	550.60	14,745,544.55	1,756,288.52	40.60011199	-104.58257068
6,800.00	26.90	285.29	6,715.57	425.59	515.01	14,745,556.63	1,756,252.87	40.60014562	-104.58269889
6,900.00	36.60	280.63	6,800.51	437.09	463.75	14,745,567.89	1,756,201.57	40.60017719	-104.58288352
7,000.00	46.42	277.72	6,875.31	447.48	398.40	14,745,577.97	1,756,136.16	40.60020574	-104.58311896
7,100.00	56.28	275.64	6,937.69	456.46	320.92	14,745,586.59	1,756,058.64	40.60023040	-104.58339806
7,200.00	66.18	273.99	6,985.76	463.75	233.68	14,745,593.47	1,755,971.37	40.60025042	-104.58371234
7,300.00	76.09	272.58	7,018.06	469.13	139.33	14,745,598.40	1,755,876.99	40.60026519	-104.58405225
7,400.00	86.01	271.28	7,033.60	472.43	40.73	14,745,601.24	1,755,778.38	40.60027426	-104.58440746
7,440.24	90.00	270.77	7,035.00	473.15	0.52	14,745,601.77	1,755,738.17	40.60027624	-104.58455229
Begin 90.00° lateral									
7,500.00	90.00	270.77	7,035.00	473.96	-59.23	14,745,602.29	1,755,678.42	40.60027845	-104.58476754
7,600.00	90.00	270.77	7,035.00	475.31	-159.22	14,745,603.17	1,755,578.42	40.60028215	-104.58512775
7,700.00	90.00	270.77	7,035.00	476.65	-259.21	14,745,604.04	1,755,478.42	40.60028585	-104.58548797
7,800.00	90.00	270.77	7,035.00	478.00	-359.20	14,745,604.92	1,755,378.43	40.60028954	-104.58584818
7,900.00	90.00	270.77	7,035.00	479.35	-459.19	14,745,605.79	1,755,278.43	40.60029324	-104.58620839
8,000.00	90.00	270.77	7,035.00	480.69	-559.18	14,745,606.67	1,755,178.44	40.60029693	-104.58656861
8,100.00	90.00	270.77	7,035.00	482.04	-659.17	14,745,607.54	1,755,078.44	40.60030062	-104.58692882
8,200.00	90.00	270.77	7,035.00	483.39	-759.16	14,745,608.42	1,754,978.44	40.60030431	-104.58728904
8,300.00	90.00	270.77	7,035.00	484.74	-859.16	14,745,609.29	1,754,878.45	40.60030800	-104.58764925
8,400.00	90.00	270.77	7,035.00	486.08	-959.15	14,745,610.17	1,754,778.45	40.60031169	-104.58800946
8,500.00	90.00	270.77	7,035.00	487.43	-1,059.14	14,745,611.05	1,754,678.46	40.60031538	-104.58836968
8,600.00	90.00	270.77	7,035.00	488.78	-1,159.13	14,745,611.92	1,754,578.46	40.60031907	-104.58872989
8,700.00	90.00	270.77	7,035.00	490.12	-1,259.12	14,745,612.80	1,754,478.46	40.60032275	-104.58909010
8,800.00	90.00	270.77	7,035.00	491.47	-1,359.11	14,745,613.67	1,754,378.47	40.60032644	-104.58945032
8,900.00	90.00	270.77	7,035.00	492.82	-1,459.10	14,745,614.55	1,754,278.47	40.60033012	-104.58981053
9,000.00	90.00	270.77	7,035.00	494.17	-1,559.09	14,745,615.42	1,754,178.48	40.60033380	-104.59017075
9,100.00	90.00	270.77	7,035.00	495.51	-1,659.08	14,745,616.30	1,754,078.48	40.60033748	-104.59053096
9,200.00	90.00	270.77	7,035.00	496.86	-1,759.07	14,745,617.17	1,753,978.48	40.60034116	-104.59089118
9,300.00	90.00	270.77	7,035.00	498.21	-1,859.06	14,745,618.05	1,753,878.49	40.60034484	-104.59125139
9,400.00	90.00	270.77	7,035.00	499.55	-1,959.06	14,745,618.92	1,753,778.49	40.60034852	-104.59161160
9,500.00	90.00	270.77	7,035.00	500.90	-2,059.05	14,745,619.80	1,753,678.50	40.60035219	-104.59197182
9,600.00	90.00	270.77	7,035.00	502.25	-2,159.04	14,745,620.67	1,753,578.50	40.60035587	-104.59233203
9,700.00	90.00	270.77	7,035.00	503.60	-2,259.03	14,745,621.55	1,753,478.50	40.60035954	-104.59269225
9,800.00	90.00	270.77	7,035.00	504.94	-2,359.02	14,745,622.42	1,753,378.51	40.60036322	-104.59305246
9,900.00	90.00	270.77	7,035.00	506.29	-2,459.01	14,745,623.30	1,753,278.51	40.60036689	-104.59341268
10,000.00	90.00	270.77	7,035.00	507.64	-2,559.00	14,745,624.17	1,753,178.52	40.60037056	-104.59377289

Database:	DB_Jul2216dt_v14	Local Co-ordinate Reference:	Well Dotsero 6-09-01L
Company:	Confluence Resources	TVD Reference:	RKB=4995+24 @ 5019.00ft
Project:	Weld County, Colorado	MD Reference:	RKB=4995+24 @ 5019.00ft
Site:	Section 06-T07N-R64W	North Reference:	True
Well:	Dotsero 6-09-01L	Survey Calculation Method:	Minimum Curvature
Wellbore:	Original Hole		
Design:	plan1		

Planned Survey									
Measured Depth (ft)	Inclination (°)	Azimuth (°)	Vertical Depth (ft)	+N/-S (ft)	+E/-W (ft)	Map Northing (usft)	Map Easting (usft)	Latitude	Longitude
10,100.00	90.00	270.77	7,035.00	508.98	-2,658.99	14,745,625.05	1,753,078.52	40.60037423	-104.59413310
10,200.00	90.00	270.77	7,035.00	510.33	-2,758.98	14,745,625.93	1,752,978.52	40.60037790	-104.59449332
10,300.00	90.00	270.77	7,035.00	511.68	-2,858.97	14,745,626.80	1,752,878.53	40.60038157	-104.59485353
10,400.00	90.00	270.77	7,035.00	513.03	-2,958.97	14,745,627.68	1,752,778.53	40.60038523	-104.59521375
10,500.00	90.00	270.77	7,035.00	514.37	-3,058.96	14,745,628.55	1,752,678.54	40.60038890	-104.59557396
10,600.00	90.00	270.77	7,035.00	515.72	-3,158.95	14,745,629.43	1,752,578.54	40.60039256	-104.59593418
10,700.00	90.00	270.77	7,035.00	517.07	-3,258.94	14,745,630.30	1,752,478.54	40.60039622	-104.59629439
10,800.00	90.00	270.77	7,035.00	518.41	-3,358.93	14,745,631.18	1,752,378.55	40.60039989	-104.59665461
10,900.00	90.00	270.77	7,035.00	519.76	-3,458.92	14,745,632.05	1,752,278.55	40.60040355	-104.59701482
11,000.00	90.00	270.77	7,035.00	521.11	-3,558.91	14,745,632.93	1,752,178.56	40.60040721	-104.59737504
11,100.00	90.00	270.77	7,035.00	522.46	-3,658.90	14,745,633.80	1,752,078.56	40.60041086	-104.59773525
11,200.00	90.00	270.77	7,035.00	523.80	-3,758.89	14,745,634.68	1,751,978.56	40.60041452	-104.59809547
11,300.00	90.00	270.77	7,035.00	525.15	-3,858.88	14,745,635.55	1,751,878.57	40.60041818	-104.59845568
11,400.00	90.00	270.77	7,035.00	526.50	-3,958.87	14,745,636.43	1,751,778.57	40.60042183	-104.59881590
11,500.00	90.00	270.77	7,035.00	527.84	-4,058.87	14,745,637.30	1,751,678.58	40.60042549	-104.59917611
11,600.00	90.00	270.77	7,035.00	529.19	-4,158.86	14,745,638.18	1,751,578.58	40.60042914	-104.59953633
11,700.00	90.00	270.77	7,035.00	530.54	-4,258.85	14,745,639.05	1,751,478.58	40.60043279	-104.59989655
11,800.00	90.00	270.77	7,035.00	531.89	-4,358.84	14,745,639.93	1,751,378.59	40.60043644	-104.60025676
11,900.00	90.00	270.77	7,035.00	533.23	-4,458.83	14,745,640.80	1,751,278.59	40.60044009	-104.60061698
12,000.00	90.00	270.77	7,035.00	534.58	-4,558.82	14,745,641.68	1,751,178.60	40.60044374	-104.60097719
12,100.00	90.00	270.77	7,035.00	535.93	-4,658.81	14,745,642.56	1,751,078.60	40.60044739	-104.60133741
12,200.00	90.00	270.77	7,035.00	537.27	-4,758.80	14,745,643.43	1,750,978.60	40.60045103	-104.60169762
12,300.00	90.00	270.77	7,035.00	538.62	-4,858.79	14,745,644.31	1,750,878.61	40.60045468	-104.60205784
12,400.00	90.00	270.77	7,035.00	539.97	-4,958.78	14,745,645.18	1,750,778.61	40.60045832	-104.60241805
12,500.00	90.00	270.77	7,035.00	541.32	-5,058.77	14,745,646.06	1,750,678.62	40.60046197	-104.60277827
12,600.00	90.00	270.77	7,035.00	542.66	-5,158.77	14,745,646.93	1,750,578.62	40.60046561	-104.60313849
12,700.00	90.00	270.77	7,035.00	544.01	-5,258.76	14,745,647.81	1,750,478.62	40.60046925	-104.60349870
12,800.00	90.00	270.77	7,035.00	545.36	-5,358.75	14,745,648.68	1,750,378.63	40.60047289	-104.60385892
12,900.00	90.00	270.77	7,035.00	546.70	-5,458.74	14,745,649.56	1,750,278.63	40.60047652	-104.60421913
13,000.00	90.00	270.77	7,035.00	548.05	-5,558.73	14,745,650.43	1,750,178.64	40.60048016	-104.60457935
13,100.00	90.00	270.77	7,035.00	549.40	-5,658.72	14,745,651.31	1,750,078.64	40.60048380	-104.60493957
13,200.00	90.00	270.77	7,035.00	550.75	-5,758.71	14,745,652.18	1,749,978.64	40.60048743	-104.60529978
13,300.00	90.00	270.77	7,035.00	552.09	-5,858.70	14,745,653.06	1,749,878.65	40.60049107	-104.60566000
13,400.00	90.00	270.77	7,035.00	553.44	-5,958.69	14,745,653.93	1,749,778.65	40.60049470	-104.60602021
13,500.00	90.00	270.77	7,035.00	554.79	-6,058.68	14,745,654.81	1,749,678.66	40.60049833	-104.60638043
13,600.00	90.00	270.77	7,035.00	556.13	-6,158.67	14,745,655.68	1,749,578.66	40.60050196	-104.60674065
13,700.00	90.00	270.77	7,035.00	557.48	-6,258.67	14,745,656.56	1,749,478.66	40.60050559	-104.60710086
13,800.00	90.00	270.77	7,035.00	558.83	-6,358.66	14,745,657.43	1,749,378.67	40.60050922	-104.60746108
13,900.00	90.00	270.77	7,035.00	560.18	-6,458.65	14,745,658.31	1,749,278.67	40.60051285	-104.60782130
14,000.00	90.00	270.77	7,035.00	561.52	-6,558.64	14,745,659.19	1,749,178.68	40.60051647	-104.60818151
14,100.00	90.00	270.77	7,035.00	562.87	-6,658.63	14,745,660.06	1,749,078.68	40.60052010	-104.60854173
14,200.00	90.00	270.77	7,035.00	564.22	-6,758.62	14,745,660.94	1,748,978.69	40.60052372	-104.60890195
14,300.00	90.00	270.77	7,035.00	565.56	-6,858.61	14,745,661.81	1,748,878.69	40.60052734	-104.60926216
14,400.00	90.00	270.77	7,035.00	566.91	-6,958.60	14,745,662.69	1,748,778.69	40.60053096	-104.60962238
14,500.00	90.00	270.77	7,035.00	568.26	-7,058.59	14,745,663.56	1,748,678.70	40.60053458	-104.60998260
14,600.00	90.00	270.77	7,035.00	569.61	-7,158.58	14,745,664.44	1,748,578.70	40.60053820	-104.61034281
14,700.00	90.00	270.77	7,035.00	570.95	-7,258.58	14,745,665.31	1,748,478.71	40.60054182	-104.61070303
14,800.00	90.00	270.77	7,035.00	572.30	-7,358.57	14,745,666.19	1,748,378.71	40.60054544	-104.61106325
14,900.00	90.00	270.77	7,035.00	573.65	-7,458.56	14,745,667.06	1,748,278.71	40.60054905	-104.61142346
15,000.00	90.00	270.77	7,035.00	574.99	-7,558.55	14,745,667.94	1,748,178.72	40.60055267	-104.61178368
15,100.00	90.00	270.77	7,035.00	576.34	-7,658.54	14,745,668.81	1,748,078.72	40.60055628	-104.61214390
15,200.00	90.00	270.77	7,035.00	577.69	-7,758.53	14,745,669.69	1,747,978.73	40.60055989	-104.61250411
15,300.00	90.00	270.77	7,035.00	579.04	-7,858.52	14,745,670.56	1,747,878.73	40.60056351	-104.61286433
15,400.00	90.00	270.77	7,035.00	580.38	-7,958.51	14,745,671.44	1,747,778.73	40.60056712	-104.61322455
15,500.00	90.00	270.77	7,035.00	581.73	-8,058.50	14,745,672.31	1,747,678.74	40.60057073	-104.61358477

Database:	DB_Jul2216dt_v14	Local Co-ordinate Reference:	Well Dotsero 6-09-01L
Company:	Confluence Resources	TVD Reference:	RKB=4995+24 @ 5019.00ft
Project:	Weld County, Colorado	MD Reference:	RKB=4995+24 @ 5019.00ft
Site:	Section 06-T07N-R64W	North Reference:	True
Well:	Dotsero 6-09-01L	Survey Calculation Method:	Minimum Curvature
Wellbore:	Original Hole		
Design:	plan1		

Planned Survey										
Measured			Vertical				Map	Map		
Depth	Inclination	Azimuth	Depth	+N/-S	+E/-W		Northing	Easting	Latitude	Longitude
(ft)	(°)	(°)	(ft)	(ft)	(ft)		(usft)	(usft)		
15,600.00	90.00	270.77	7,035.00	583.08	-8,158.49		14,745,673.19	1,747,578.74	40.60057433	-104.61394498
15,700.00	90.00	270.77	7,035.00	584.42	-8,258.48		14,745,674.07	1,747,478.75	40.60057794	-104.61430520
15,800.00	90.00	270.77	7,035.00	585.77	-8,358.48		14,745,674.94	1,747,378.75	40.60058155	-104.61466542
15,900.00	90.00	270.77	7,035.00	587.12	-8,458.47		14,745,675.82	1,747,278.75	40.60058515	-104.61502563
16,000.00	90.00	270.77	7,035.00	588.47	-8,558.46		14,745,676.69	1,747,178.76	40.60058875	-104.61538585
16,100.00	90.00	270.77	7,035.00	589.81	-8,658.45		14,745,677.57	1,747,078.76	40.60059236	-104.61574607
16,200.00	90.00	270.77	7,035.00	591.16	-8,758.44		14,745,678.44	1,746,978.77	40.60059596	-104.61610629
16,300.00	90.00	270.77	7,035.00	592.51	-8,858.43		14,745,679.32	1,746,878.77	40.60059956	-104.61646650
16,400.00	90.00	270.77	7,035.00	593.85	-8,958.42		14,745,680.19	1,746,778.77	40.60060316	-104.61682672
16,500.00	90.00	270.77	7,035.00	595.20	-9,058.41		14,745,681.07	1,746,678.78	40.60060675	-104.61718694
16,600.00	90.00	270.77	7,035.00	596.55	-9,158.40		14,745,681.94	1,746,578.78	40.60061035	-104.61754716
16,700.00	90.00	270.77	7,035.00	597.90	-9,258.39		14,745,682.82	1,746,478.79	40.60061395	-104.61790738
16,800.00	90.00	270.77	7,035.00	599.24	-9,358.38		14,745,683.69	1,746,378.79	40.60061754	-104.61826759
16,832.71	90.00	270.77	7,035.00	599.68	-9,391.09		14,745,683.98	1,746,346.08	40.60061872	-104.61838543
PBHL/TD 16832.71 MD/7035.00 TVD										

Design Targets										
Target Name	Dip Angle (°)	Dip Dir. (°)	TVD (ft)	+N/-S (ft)	+E/-W (ft)	Northing (usft)	Easting (usft)	Latitude	Longitude	
- hit/miss target										
- Shape										
Dotsero 6-09-01L LP 32	0.00	0.00	7,035.00	473.15	0.52	14,745,601.77	1,755,738.17	40.60027624	-104.58455229	
- plan hits target center										
- Point										
Dotsero 6-09-01L PBHL	0.00	0.00	7,035.00	599.68	-9,391.09	14,745,683.98	1,746,346.08	40.60061872	-104.61838543	
- plan hits target center										
- Point										

Plan Annotations					
Measured Depth (ft)	Vertical Depth (ft)	Local Coordinates			
		+N/-S (ft)	+E/-W (ft)	Comment	
3,000.00	3,000.00	0.00	0.00	KOP Begin 2°/100' build	
3,628.02	3,623.00	38.38	56.81	Begin 12.56° tangent	
6,437.39	6,365.14	380.37	563.07	Begin 10°/100' build/turn	
7,440.24	7,035.00	473.15	0.52	Begin 90.00° lateral	
16,832.71	7,035.00	599.68	-9,391.09	PBHL/TD 16832.71 MD/7035.00 TVD	