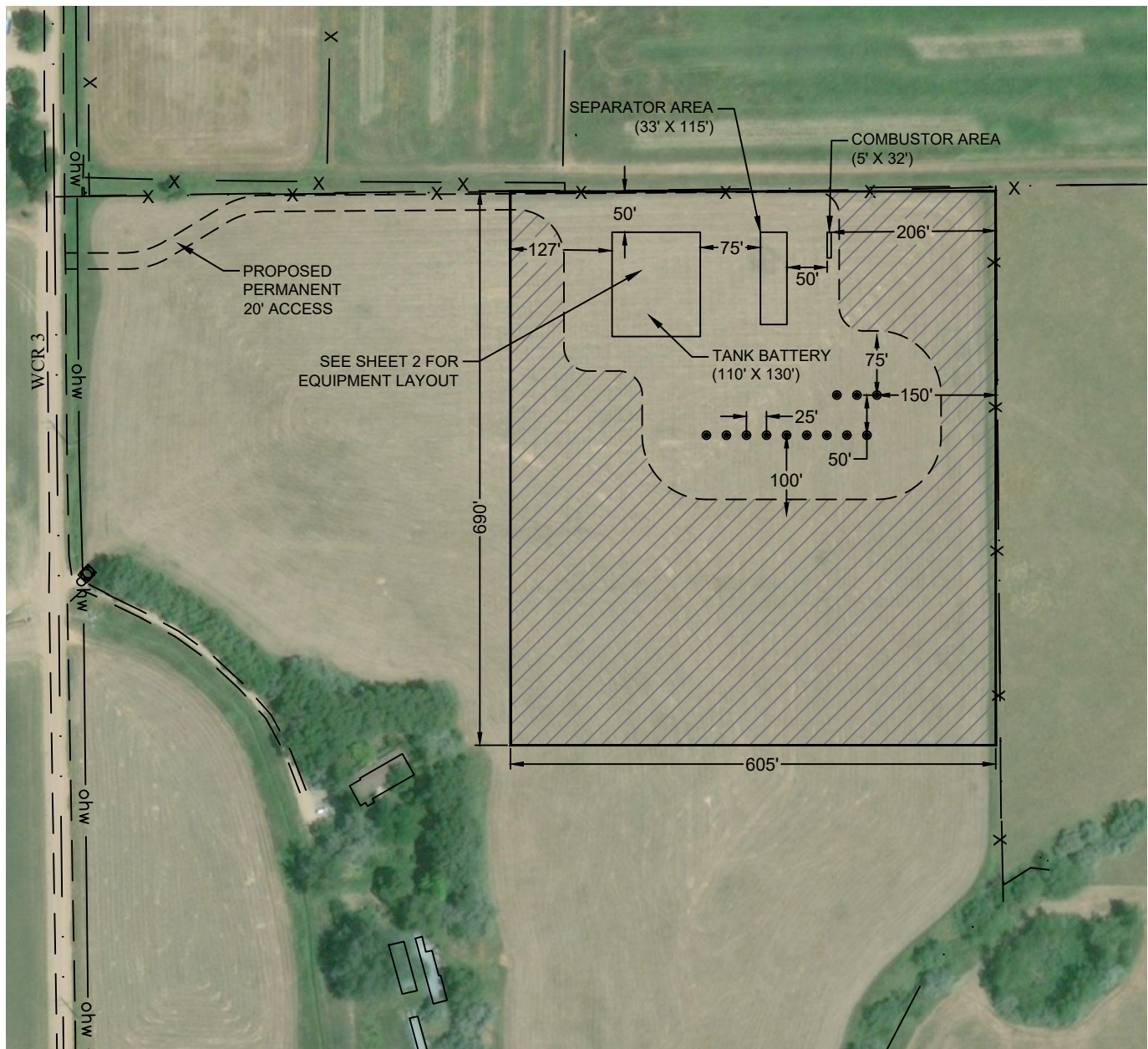




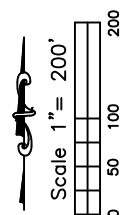
Washburn Land Surveying  
www.WashburnSurveying.com  
970-232-9645

FACILITY EXHIBIT  
NOBLE 3N68W5 SITE

SECTION: 5  
TOWNSHIP: 3N  
RANGE: 68W  
6TH P.M.  
WELD COUNTY, CO



//// RECLAIMED AREA(S)  
TOTAL DISTURBED AREA OF LOCATION = ± 9.8 ACRES  
TOTAL SIZE OF AREA AFTER RECLAMATION = ± 3.5 ACRES

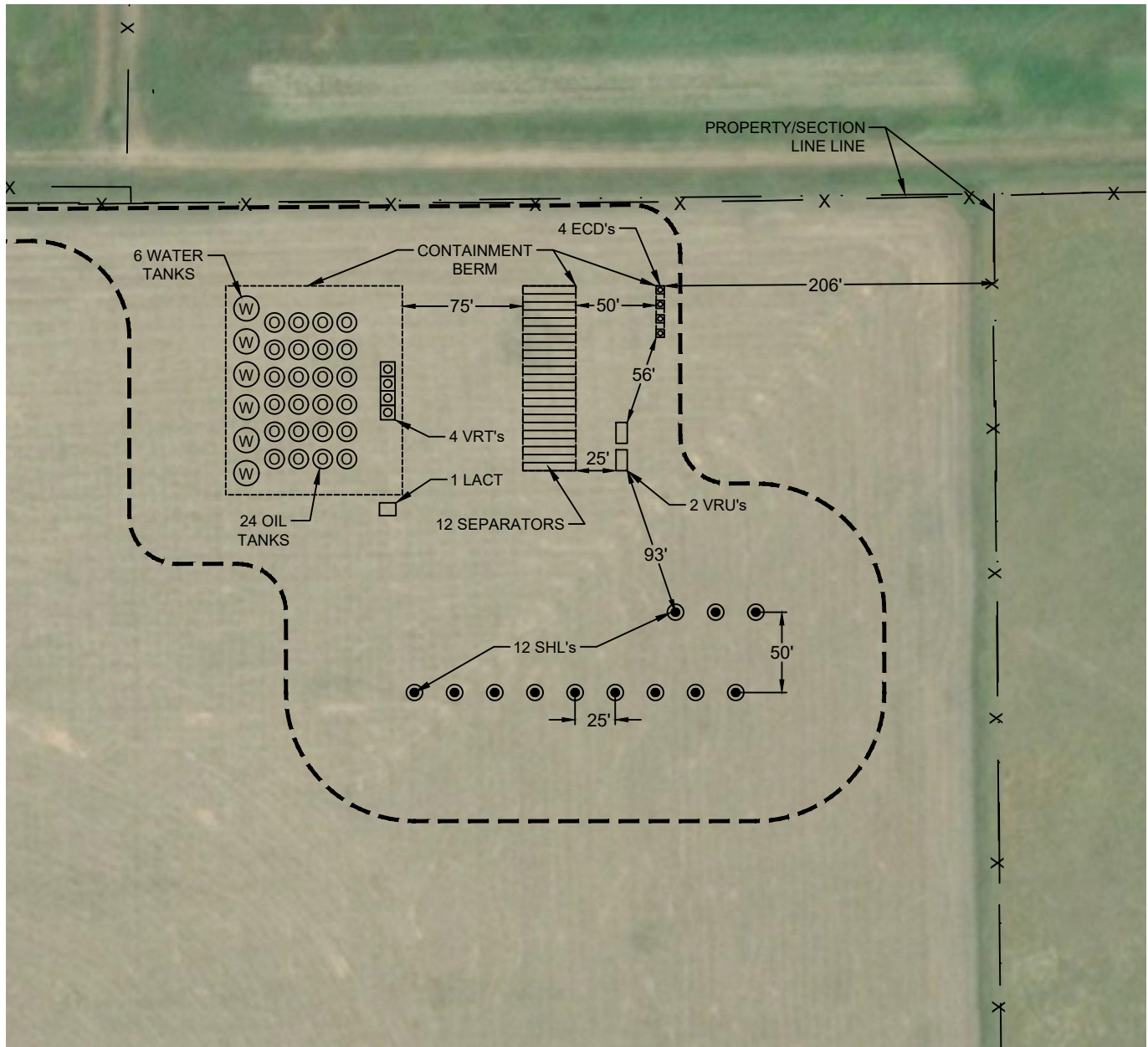




Washburn Land Surveying  
www.WashburnSurveying.com  
970-232-9645

# FACILITY EXHIBIT NOBLE 3N68W5 SITE

SECTION: 5  
TOWNSHIP: 3N  
RANGE: 68W  
6TH P.M.  
WELD COUNTY, CO



## Notes:

SEPARATORS - 33' X 5' spaced 5' apart  
VRU's - 13' X 7' spaced 4' apart and minimum of 20' from the separators and 50' from the ECD's  
ECD's - 3' diameter on a 5'X5' base spaced 4' apart  
VRT's - 5' diameter on a 9' X 9' base, 15' from tanks  
WATER TANKS - 15.5' diameter  
OIL TANKS - 12' diameter  
LACT - 10.25' X 8' and 5' outside of containment berm

