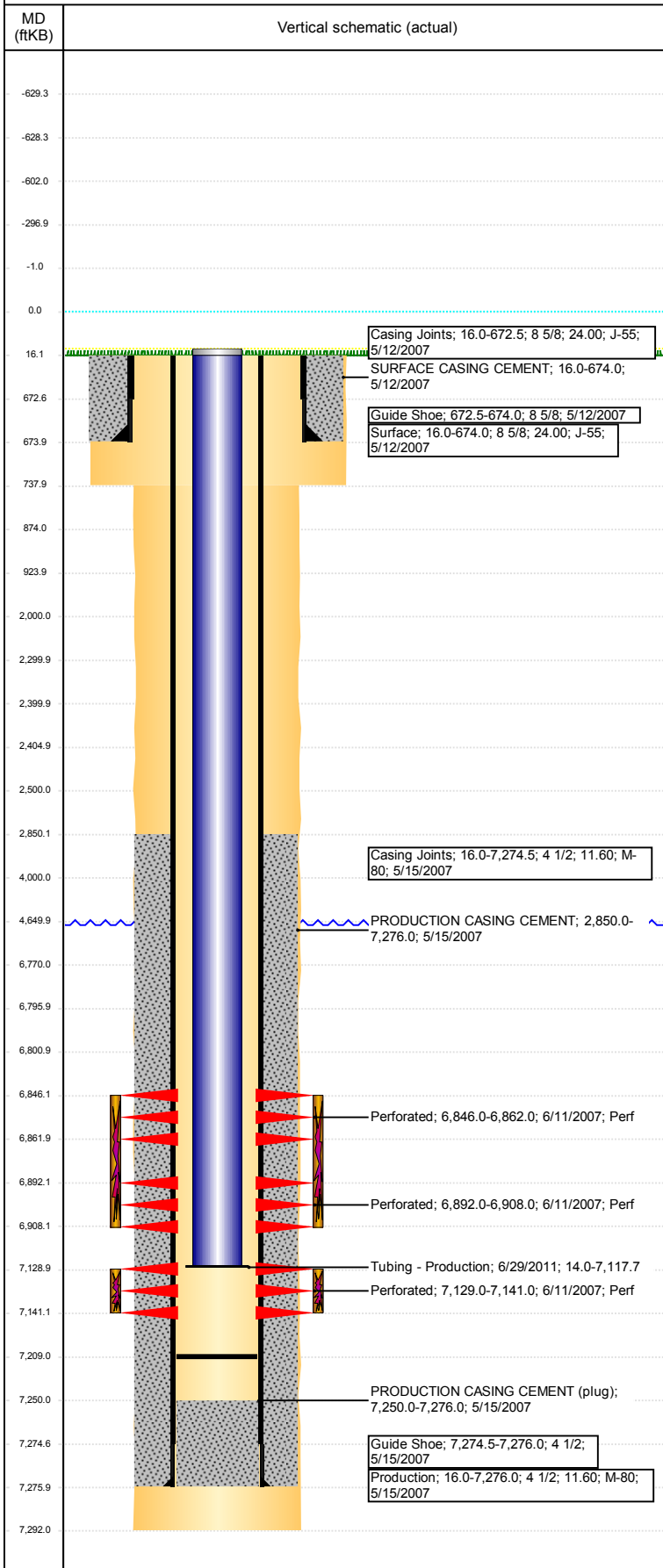


Well Name: KARAKAKES H13-20

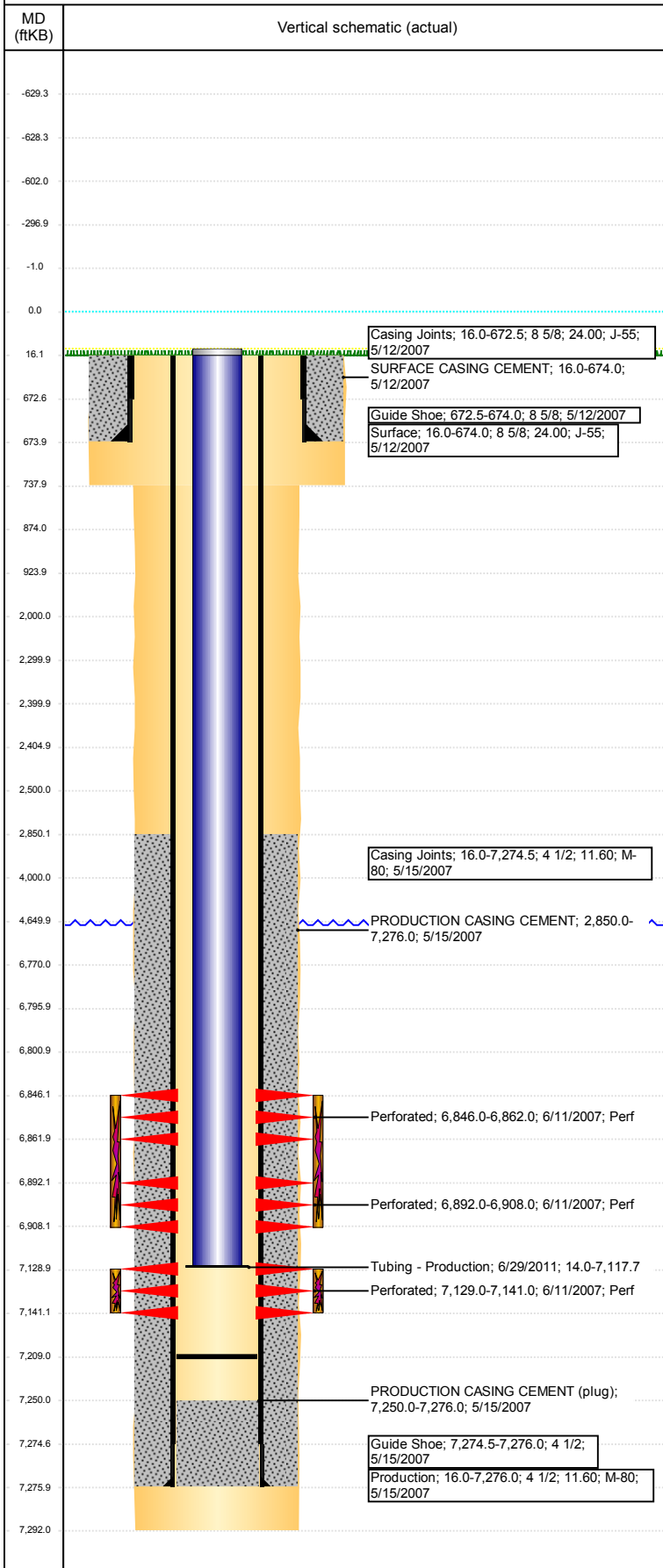
VERTICAL - ORIGINAL HOLE, 2/24/2018 5:13:08 PM



Well Header							
API 05-123-25061		Well Report Center 424423418		Well Configuration Type VERTICAL			
Original KB Elevation (ft) 4,854		KB - GL / MSL (ftKB) 16.00		Spud Date 5/11/2007		P & A Date	
Production Route Watt - C1-09			Well Production Status PR				SoRT Ignore No
Directions To Well WCR 49 / TO WCR 34.5 WEST ON CR 34.5 TO WCR 47 SOUTH 1.2 MILES TO GREEN GATE. HEAD EAST 1/10 THEN NORTH 2/10 INTO				Actual Latitude (°) 40.22471902		Actual Longitude (°) -104.61757905	
Comment							
Congressional Location							
Quarter 3 NW	Quarter 4 SW	Section 13	Township 3	Twnshp N/S Dir N	Range 65	Range E/W Dir W	
Rig Operator							
Rig Operator							
Plug Back Total Depths							
Date		Depth (ftKB)		Method		Com	
6/28/2011		7,209.0		TUBING TALLY		CLEAN OUT AFTER CODELL REFRAC	
Wellbore Sections							
Section Des		Size (in)		Act Top, MD (ftKB)		Act Btm, MD (ftKB)	
SURFACE		12 1/4		16		738	
PRODUCTION		7 7/8		738		7,292	
Zone Statuses							
Zone Name		Status Date			Status		
CODELL		7/5/2011			PR		
NIOBRARA		8/9/2007			PR		
Casing Strings							
Surface, 674.0ftKB							
Casing Description Surface		Run Date 5/12/2007	OD (in) 8 5/8	Wt/Len (l... 24.00	Grade J-55	Top, MD (ft... 16.0	MD (ftKB) 674.0
Production, 7,276.0ftKB							
Casing Description Production		Run Date 5/15/2007	OD (in) 4 1/2	Wt/Len (l... 11.60	Grade M-80	Top, MD (ft... 16.0	MD (ftKB) 7,276.0
Cement							
Des			Start Date		Top (ftKB)		Btm (ftKB)
SURFACE CASING CEMENT			5/12/2007		16.0		674.0
PRODUCTION CASING CEMENT			5/15/2007		2,850.0		7,276.0
Proposed Cement							
Des					Top (ftKB)		Btm (ftKB)
Dump Bail					6,770.0		6,796.0
Balance Plug					4,000.0		4,650.0
Balance Plug					2,300.0		2,400.0
Balance Plug					2,405.0		2,500.0
Cement Squeeze					2,000.0		2,500.0
Balance Plug					874.0		924.0
Balance Plug					674.0		874.0
Balance Plug					16.0		674.0
Tubing Strings							
Tubing Description Tubing - Production		Run Date 6/29/2011	String... 2 3/8	ID (in) 2.00	Wt (lb/ft) 4.70	Grade J-55	Len (ft) 7,103.71
Set De...							
Tubing Components							
Item Des		OD (in)	Wt (lb/ft)	Grade	Jts	Len (ft)	Btm (ftKB)
Tubing Pup Joint		2 3/8	4.70	J-55	1	10.00	24.0
EUE 8rd Tubing		2 3/8	4.70	J-55	230	7,092.21	7,116.2
Pump Seating Nipple		2 3/8		J-55	1	1.10	7,117.3
Notched collar		3 1/16			1	0.40	7,117.7
Other In Hole							
Run Date		Des			OD (in)	Top (ftKB)	Btm (ftKB)

Well Name: KARAKAKES H13-20

VERTICAL - ORIGINAL HOLE, 2/24/2018 5:13:09 PM



Proposed Other In Hole						
Des	OD (in)	Top (ftKB)	Btm (ftKB)			
Cast Iron Bridge Plug	4	6,796.0	6,801.0			
Cement Retainer	4	2,400.0	2,405.0			
Logs						
Date	Type	Top, MD (ftKB)	Btm, MD (ftKB)			
5/15/2007	COMPENSATED DENSITY	674.0	7,286.0			
5/15/2007	INDUCTION	674.0	7,286.0			
5/25/2007	CBL/CCL/GR	674.0	7,286.0			
Perforation Data						
Linked Zone	Sum of Entered Shot Total	Top (ftKB)	Btm (ftKB)	Date		
NIOBRARA, ORIGINAL HOLE	64	6,846.00	6,862.00	6/11/2007		
NIOBRARA, ORIGINAL HOLE	64	6,892.00	6,908.00	6/11/2007		
CODELL, ORIGINAL HOLE	48	7,129.00	7,141.00	6/11/2007		
Total (Sum)	176					
Proposed Perforations						
Linked Zone	Sum of En...	Top Depth (ftKB)	Btm (ftKB)	Date		
	0	2,500.00	2,500.00	2/6/2018		
Total (Sum)	0					
Job Supply Amounts						
Supply Item Des	Type	Uni...	Job Category	Total ...	Total ...	Total ...