

N. 1/4 COR.
SEC. 20, T1N, R65W
FOUND 2" ALUM. CAP
L.S. NO. 25937

S 89°01'25" W 2604.36' (M)

S 89°01'45" W 2603.49' (M)

MATCH LINE
SEE SHEET 1

NE. COR.
SEC. 20, T1N, R65W
FOUND 2 1/2" ALUM. CAP
L.S. NO. 19585

N 00°03'27" W
1325.56' (M)

SURFACE LOCATION: NAD 83
GROUND ELEVATION= 4939.51'
LATITUDE= 40.059579°
LONGITUDE= -104.679595°
LATITUDE= 40°03'34.484"
LONGITUDE= -104°40'46.543"
HEEL LOCATION: NAD 83
LATITUDE= 40.058611°
LONGITUDE= -104.682120°
LATITUDE= 40°03'30.999"
LONGITUDE= -104°40'55.631"
BOTTOM HOLE LOCATION: NAD 83
LATITUDE= 40.023640°
LONGITUDE= -104.682262°
LATITUDE= 40°01'25.104"
LONGITUDE= -104°40'56.143"

1 00°20'04" W
2666.89' (M)

S 00°20'57" E 12739' GRID
S 00°10'51" W TRUE
S 07°54'57" E MAGNETIC

N 00°04'07" W
1325.44' (M)

S 89°22'30" W
2616.78' (M)

M) CENTER 1/4 COR.
SEC. 20, T1N, R65W
FOUND 2" ALUM. CAP.
L.S. NO. 25937

20

S 89°22'23" W
2616.46' (M)

E. 1/4 COR.
SEC. 20, T1N, R65W
FOUND 2" ALUM. CAP
L.S. NO. 25937

CS. 1/16 COR.
SEC. 20, T1N, R65W
FOUND 2" ALUM. CAP
P.L.S. NO. 23519

N 00°20'43" W
1331.77' (M)

S. 1/4 COR.
SEC. 20, T1N, R65W
FOUND 2 1/2" ALUM. CAP
L.S. NO. 30462

S 89°39'36" W 2628.63' (M)

**WELLBORE CONTINUES
INTO SECTION 29**

THIS IS TO CERTIFY THAT THE ABOVE PLAT WAS PREPARED FROM FIELD NOTES OF ACTUAL SURVEYS MADE BY ME OR UNDER MY SUPERVISION AND THAT THE SAME ARE TRUE AND CORRECT TO THE BEST OF MY KNOWLEDGE AND BELIEF. THIS CERTIFICATE DOES NOT REPRESENT A LAND SURVEY PLAT OR IMPROVEMENT SURVEY PLAT AS DEFINED BY C.R. 18-1-102 AND CANNOT BE RELIED UPON TO DETERMINE OWNERSHIP.

Randall K. French
 RANDALL K. FRENCH
 PROFESSIONAL LAND SURVEYOR
 COLORADO REGISTRATION NUMBER 38512
 1/31/18

NOTICE: ACCORDING TO COLORADO STATE LAW YOU MUST COMMENCE ANY LEGAL ACTION BASED UPON ANY DEFECT IN THIS SURVEY WITHIN THREE YEARS AFTER YOU FIRST DISCOVER SUCH DEFECT. IN NO EVENT MAY ANY ACTION BASED UPON ANY DEFECT IN THIS SURVEY BE COMMENCED MORE THAN TEN YEARS FROM THE DATE ON THE CERTIFICATION SHOWN HEREON.

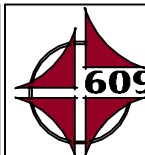
NOTE:
MAGNETIC NORTH IS CURRENT AS OF 10/27/2017.
MAGNETIC NORTH CHANGES WEST 0°06' PER YEAR.

SCALE: 1" = 1000'

1. ▲ INDICATES SECTION CORNER.
2. ● INDICATES CALCULATED CORNER.
3. ELEVATION BASED ON NAVD88 (GEOID 12B).
4. BASIS OF BEARING DERIVED FROM COLORADO COORDINATE SYSTEM OF 1983 NORTH ZONE.
5. ALL MEASURED DISTANCES ARE GRID.
6. COMBINED SCALE FACTOR: .99972920 CALCULATED FROM THE S. 1/4 CORNER OF SECTION 8, T1N, R65W.
6. OPERATOR: MARC RITT / PDP0 = 1.3.
7. SEE ADDENDUM TO WELL LOCATION CERTIFICATE FOR EXISTING IMPROVEMENTS WITHIN 500' OF THE WELL PAD.
8. WELL FOOTAGES ARE MEASURED AT RIGHT ANGLES TO THE SECTION LINES.
9. THE BOTTOM OF HOLE BEARS S00°20'57"E, 12739' FROM THE HEEL LOCATION.

ENGLISH FARMS 8-16HZ
WELL LOCATION CERTIFICATE
304' FSL & 310' FEL SESE (SURFACE)
LOCATED IN SECTION 8
50' FNL & 1015' FEL NENE (HEEL)
LOCATED IN SECTION 17
2177' FNL & 1061' FEL SENE (BOTTOM)
LOCATED IN SECTION 29
T1N, R65W, 6TH P.M.
WELD COUNTY, COLORADO

**Kerr-McGee Oil &
Gas Onshore L.P.**
1099 18th Street
Denver, Colorado 80202



CONSULTING, LLC

SHERIDAN OFFICE
1095 Saberton Avenue
Sheridan, Wyoming 82801
Phone 307-674-0609

LOVELAND OFFICE
1635 Foxtrail Drive, Suite 204
Loveland, Colorado 80538
Phone 970-776-4331

DRAFTED BY: LMO	CHECKED BY: RKF	SHEET NO: 2 2 OF 3
DATE DRAFTED: 11/30/17	DATE SURVEYED: 7/24/17	
REVISED: 1/31/18	FILE NAME: 17-119	

T1N, R65W

N. 1/4 COR.
SEC. 29, T1N, R65W
FOUND 2 1/2" ALUM. CAP
L.S. NO. 30462

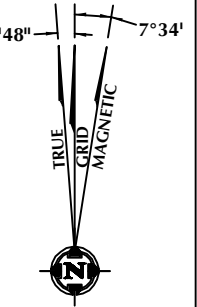
NE. COR.
SEC. 29, T1N, R65W
FOUND 2" ALUM. CAP
ILLEGIBLE

MATCH LINE
SEE SHEET 2
NW. COR.
SEC. 29, T1N, R65W
FOUND 2" ALUM. CAP
ILLEGIBLE

W. 1/4 COR.
SEC. 29, T1N, R65W
FOUND 2 1/2" ALUM. CAP
P.L.S. NO. 36060

SW. COR.
SEC. 29, T1N, R65W
FOUND 2 1/2" ALUM. CAP
L.S. NO. 23027

E. 1/4 COR.
SEC. 29, T1N, R65W
FOUND 2" ALUM. CAP
L.S. NO. 25937



BOTTOM OF HOLE:
2177' FNL & 1061' FEL

29

SURFACE LOCATION: NAD 83
GROUND ELEVATION= 4939.5'
LATITUDE= 40.059579°
LONGITUDE= -104.679595°
LATITUDE= 40°03'34.484"
LONGITUDE= -104°40'46.543"
HEEL LOCATION: NAD 83
LATITUDE= 40.058611°
LONGITUDE= -104.682120°
LATITUDE= 40°03'30.999"
LONGITUDE= -104°40'55.631"
BOTTOM HOLE LOCATION: NAD 83
LATITUDE= 40.023640°
LONGITUDE= -104.682262°
LATITUDE= 40°01'25.104"
LONGITUDE= -104°40'56.143"

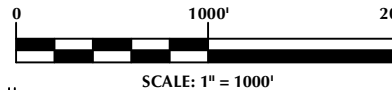
CERTIFICATE OF SURVEYOR:

THIS IS TO CERTIFY THAT THE ABOVE PLAT WAS PREPARED FROM FIELD NOTES OF ACTUAL SURVEYS MADE BY ME OR UNDER MY SUPERVISION AND THAT THE SAME ARE TRUE AND CORRECT TO THE BEST OF MY KNOWLEDGE AND BELIEF. THIS CERTIFICATE DOES NOT REPRESENT A LAND SURVEY PLAT OR IMPROVEMENT SURVEY PLAT AS DEFINED BY C.R.S. § 8-31-102 AND CANNOT BE RELIED UPON TO DETERMINE OWNERSHIP.

Randall K. French
RANDALL K. FRENCH
PROFESSIONAL LAND SURVEYOR
COLORADO REGISTRATION NUMBER 38512
1/31/18

NOTICE:
ACCORDING TO COLORADO STATE LAW YOU MUST COME TO COURT LEGAL ACTION BASED UPON ANY DEFECT IN THIS SURVEY WITHIN THREE YEARS AFTER YOU FIRST DISCOVER SUCH DEFECT. IN NO EVENT MAY ANY ACTION BASED UPON ANY DEFECT IN THIS SURVEY BE COMMENCED MORE THAN TEN YEARS FROM THE DATE ON THE CERTIFICATION SHOWN HEREON.

NOTE:
MAGNETIC NORTH IS CURRENT AS OF 10/27/2017.
MAGNETIC NORTH CHANGES WEST 0°06' PER YEAR.



NOTES:

- ▲ INDICATES SECTION CORNER.
- INDICATES CALCULATED CORNER.
- ELEVATION BASED ON NAVD88 (GEOID 12B).
- BASIS OF BEARING DERIVED FROM COLORADO COORDINATE SYSTEM OF 1983 NORTH ZONE.
- ALL MEASURED DISTANCES ARE GRID.
- COMBINED SCALE FACTOR: .99972920 CALCULATED FROM THE S. 1/4 CORNER OF SECTION 8, T1N, R65W.
- OPERATOR: MARC RITT / PDOP = 1.3.
- SEE ADDENDUM TO WELL LOCATION CERTIFICATE FOR EXISTING IMPROVEMENTS WITHIN 500' OF THE WELL PAD.
- WELL FOOTAGES ARE MEASURED AT RIGHT ANGLES TO THE SECTION LINES.
- THE BOTTOM OF HOLE BEARS S00°20'57"E, 12739' FROM THE HEEL LOCATION.

WELL PAD - ENGLISH FARMS 8-16HZ

ENGLISH FARMS 8-16HZ
WELL LOCATION CERTIFICATE
304' FSL & 310' FEL SESE (SURFACE)
LOCATED IN SECTION 8
50' FNL & 1015' FEL NENE (HEEL)
LOCATED IN SECTION 17
2177' FNL & 1061' FEL SENE (BOTTOM)
LOCATED IN SECTION 29
T1N, R65W, 6TH P.M.
WELD COUNTY, COLORADO

**Kerr-McGee Oil &
Gas Onshore L.P.**
1099 18th Street
Denver, Colorado 80202

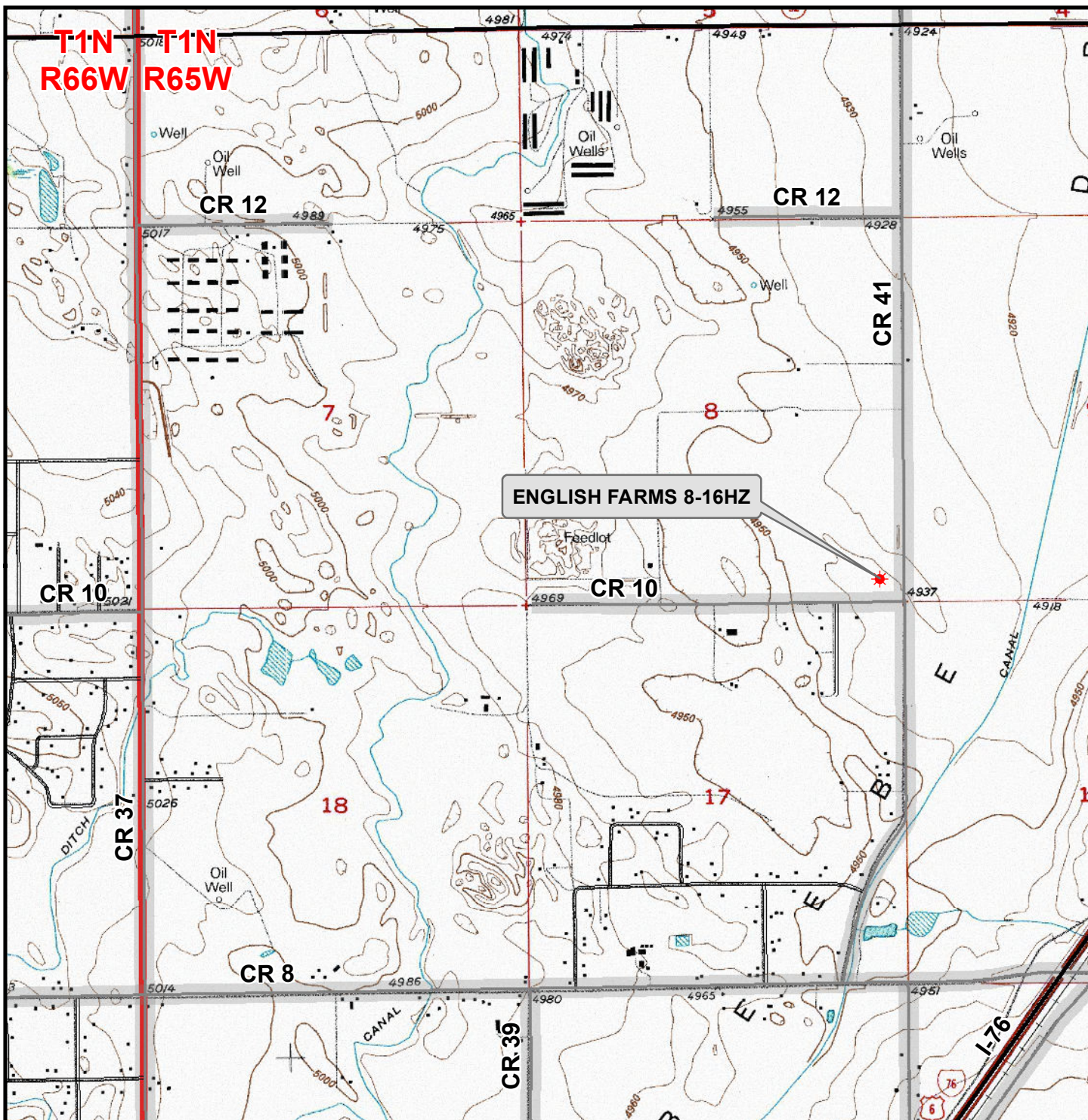


CONSULTING, LLC

SHERIDAN OFFICE
1095 Saberton Avenue
Sheridan, Wyoming 82801
Phone 307-674-0609
LOVELAND OFFICE
1635 Foxtrail Drive, Suite 204
Loveland, Colorado 80538
Phone 970-776-4331

DRAFTED BY:	LMO	CHECKED BY:	RKF	SHEET NO:
DATE DRAFTED:	11/30/17	DATE SURVEYED:	7/24/17	3
REVISED:	1/31/18	FILE NAME:	17-119	3 OF 3

K:\ANADARKO\2017\2017_119_ENGLISH_FARMS_T1N_R65W_SEC_8\GIS\Maps_ABC\English Farms 8-16HZ.mxd 11/16/2017 4:24:08 PM



Legend

- ★ Well - Fee - Proposed === Road - Primitive - Existing — Road - County - Existing
— Road - Improved - Existing — Road - Highway - Existing

WELL PAD - ENGLISH FARMS 8-16HZ

**GENERAL LOCATION MAP
ENGLISH FARMS 8-16HZ
LOCATED IN SECTION 8
T1N, R65W, 6th P.M.
WELD COUNTY, COLORADO**

**Kerr-McGee Oil &
Gas Onshore L.P.**

1099 18th Street
Denver, Colorado 80202



CONSULTING, LLC

SHERIDAN OFFICE
1095 Saberton Avenue
Sheridan, Wyoming 82801
Phone 307-674-0609

LOVELAND OFFICE
1635 Foxtail Drive, Suite 204
Loveland, Colorado 80538
Phone 970-776-4331



SCALE: 1" = 2,000ft

NAD83 CO-Nft

DRAWN: DP

DATE: 28 Nov 2017

REVISED:

DATE: