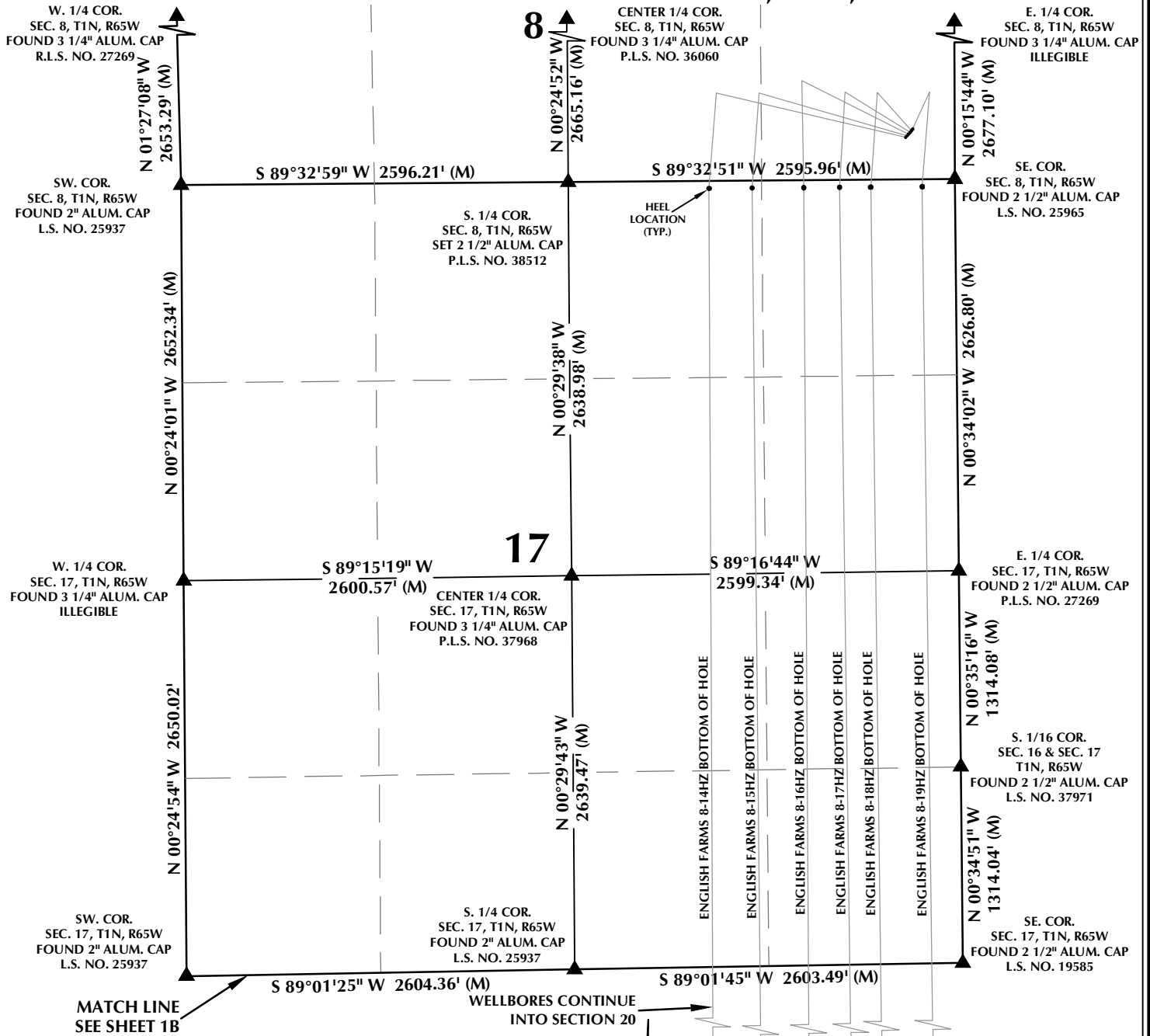


MULTI-WELL PLAN SECTIONS 8 & 17, T1N, R65W



WELL NOTES:

ENGLISH FARMS 8-14HZ
SURFACE: 281' FSL, 329' FEL (SEC. 8)
BOTTOM HOLE: 2176' FNL, 1715' FEL (SEC. 29)

ENGLISH FARMS 8-15HZ
SURFACE: 292' FSL, 319' FEL (SEC. 8)
BOTTOM HOLE: 2179' FNL, 1356' FEL (SEC. 29)

ENGLISH FARMS 8-16HZ
SURFACE: 304' FSL, 310' FEL (SEC. 8)
BOTTOM HOLE: 2177' FNL, 1061' FEL (SEC. 29)

ENGLISH FARMS 8-17HZ
SURFACE: 315' FSL, 300' FEL (SEC. 8)
BOTTOM HOLE: 2178' FNL, 729' FEL (SEC. 29)

ENGLISH FARMS 8-18HZ
SURFACE: 326' FSL, 290' FEL (SEC. 8)
BOTTOM HOLE: 2177' FNL, 525' FEL (SEC. 29)

ENGLISH FARMS 8-19HZ
SURFACE: 338' FSL, 281' FEL (SEC. 8)
BOTTOM HOLE: 2175' FNL, 183' FEL (SEC. 29)

NOTES:

- ▲ INDICATES SECTION CORNER.
- INDICATES CALCULATED CORNER.
- BASIS OF BEARING DERIVED FROM COLORADO COORDINATE SYSTEM OF 1983 NORTH ZONE.
- ALL MEASURED DISTANCES ARE GRID.
- COMBINED SCALE FACTOR: .99972920 CALCULATED FROM THE S. 1/4 CORNER OF SECTION 8, T1N, R65W.
- WELL FOOTAGES ARE MEASURED AT RIGHT ANGLES TO THE SECTION LINES.

WELL PAD - ENGLISH FARMS 8-16HZ

MULTI-WELL PLAN
ENGLISH FARMS 8-14HZ, ENGLISH FARMS 8-15HZ,
ENGLISH FARMS 8-16HZ, ENGLISH FARMS 8-17HZ,
ENGLISH FARMS 8-18HZ & ENGLISH FARMS 8-19HZ
LOCATED IN SECTIONS 8, 17, 20 & 29
T1N, R65W, 6TH P.M.
WELD COUNTY, COLORADO

**Kerr-McGee Oil &
Gas Onshore L.P.**
1099 18th Street
Denver, Colorado 80202



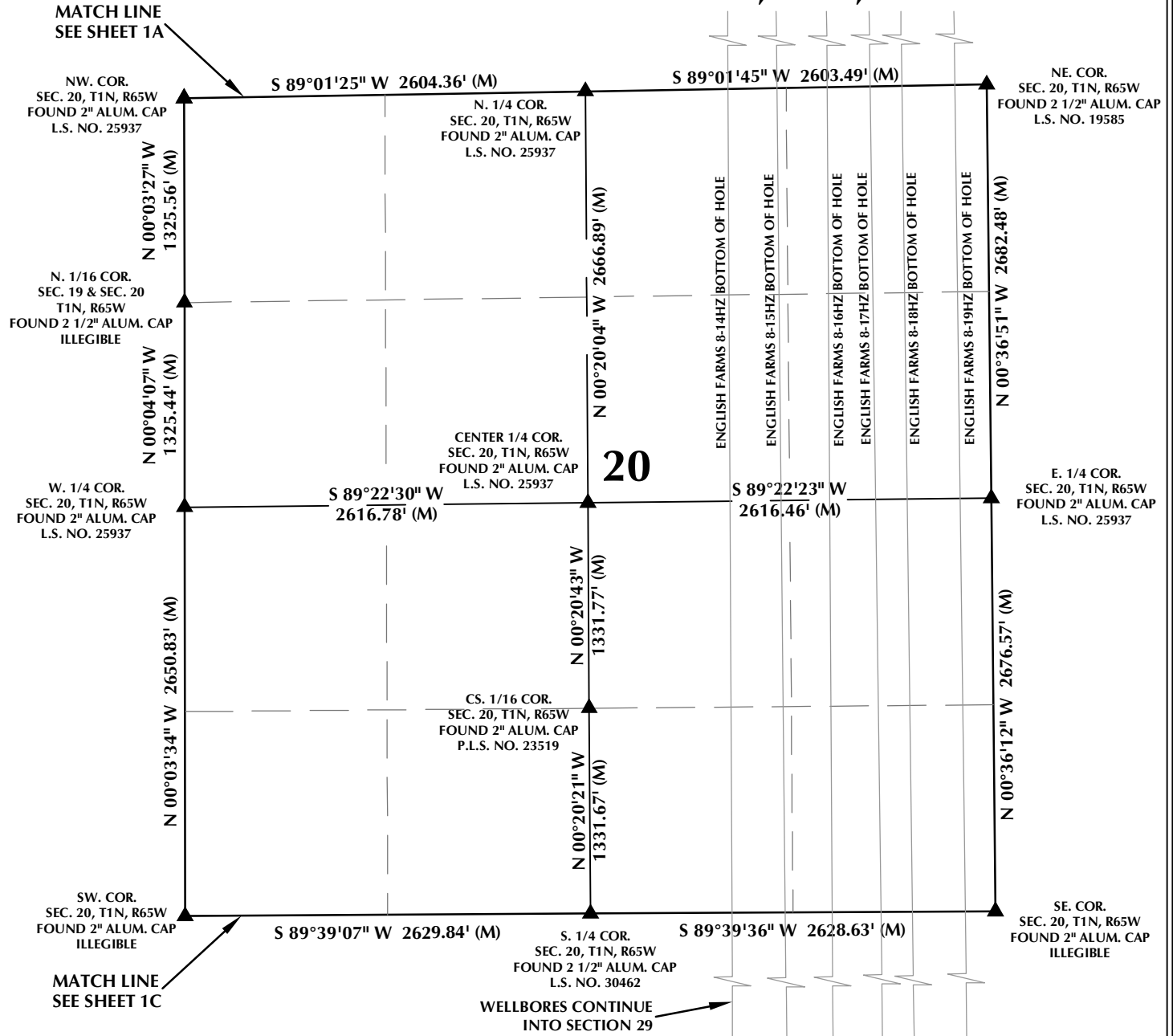
CONSULTING, LLC

SHERIDAN OFFICE
1095 Saberton Avenue
Sheridan, Wyoming 82801
Phone 307-674-0609

LOVELAND OFFICE
1635 Foxtrail Drive, Suite 204
Loveland, Colorado 80538
Phone 970-776-4331

DRAFTED BY:	LMO	CHECKED BY:	RKF	SHEET NO:
DATE DRAFTED:	11/30/17	DATE SURVEYED:	7/24/17	1A
REVISED:	1/31/18	FILE NAME:	17-119	1A OF 1

MULTI-WELL PLAN SECTION 20, T1N, R65W



WELL NOTES:

ENGLISH FARMS 8-14HZ
SURFACE: 281' FSL, 329' FEL (SEC. 8)
BOTTOM HOLE: 2176' FNL, 1715' FEL (SEC. 29)
ENGLISH FARMS 8-15HZ
SURFACE: 292' FSL, 319' FEL (SEC. 8)
BOTTOM HOLE: 2179' FNL, 1356' FEL (SEC. 29)
ENGLISH FARMS 8-16HZ
SURFACE: 304' FSL, 310' FEL (SEC. 8)
BOTTOM HOLE: 2177' FNL, 1061' FEL (SEC. 29)
ENGLISH FARMS 8-17HZ
SURFACE: 315' FSL, 300' FEL (SEC. 8)
BOTTOM HOLE: 2178' FNL, 729' FEL (SEC. 29)

ENGLISH FARMS 8-18HZ
SURFACE: 326' FSL, 290' FEL (SEC. 8)
BOTTOM HOLE: 2177' FNL, 525' FEL (SEC. 29)
ENGLISH FARMS 8-19HZ
SURFACE: 338' FSL, 281' FEL (SEC. 8)
BOTTOM HOLE: 2175' FNL, 183' FEL (SEC. 29)

NOTES:

- ▲ INDICATES SECTION CORNER.
- INDICATES CALCULATED CORNER.
- BASIS OF BEARING DERIVED FROM COLORADO COORDINATE SYSTEM OF 1983 NORTH ZONE.
- ALL MEASURED DISTANCES ARE GRID.
- COMBINED SCALE FACTOR: .99972920 CALCULATED FROM THE S. 1/4 CORNER OF SECTION 8, T1N, R65W.
- WELL FOOTAGES ARE MEASURED AT RIGHT ANGLES TO THE SECTION LINES.

WELL PAD - ENGLISH FARMS 8-16HZ

MULTI-WELL PLAN
ENGLISH FARMS 8-14HZ, ENGLISH FARMS 8-15HZ,
ENGLISH FARMS 8-16HZ, ENGLISH FARMS 8-17HZ,
ENGLISH FARMS 8-18HZ & ENGLISH FARMS 8-19HZ
LOCATED IN SECTIONS 8, 17, 20 & 29
T1N, R65W, 6TH P.M.
WELD COUNTY, COLORADO

**Kerr-McGee Oil &
Gas Onshore L.P.**
1099 18th Street
Denver, Colorado 80202



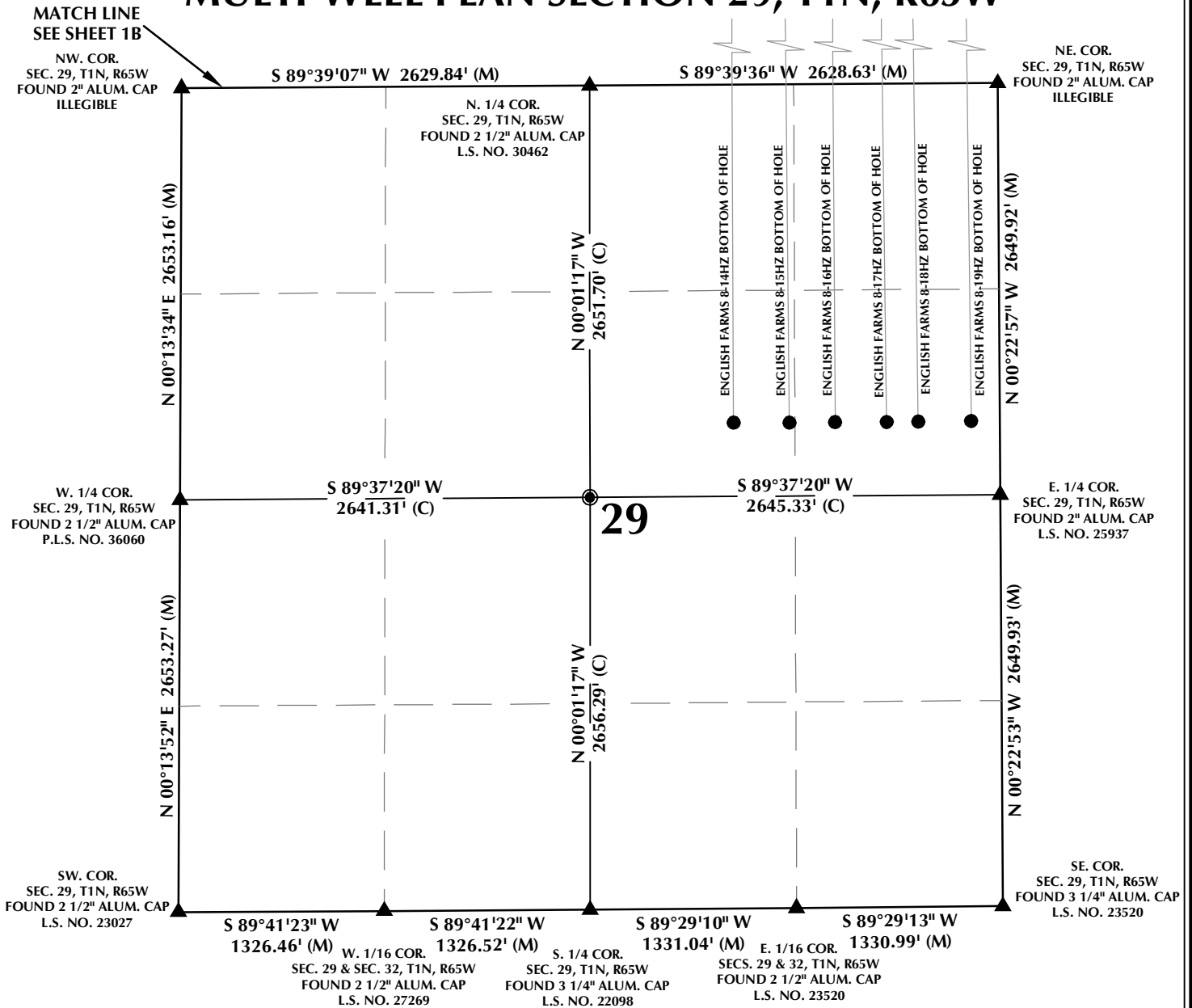
CONSULTING, LLC

SHERIDAN OFFICE
1095 Saberton Avenue
Sheridan, Wyoming 82801
Phone 307-674-0609

LOVELAND OFFICE
1635 Foxtrail Drive, Suite 204
Loveland, Colorado 80538
Phone 970-776-4331

DRAFTED BY:	LMO	CHECKED BY:	RKF	SHEET NO:
DATE DRAFTED:	11/30/17	DATE SURVEYED:	7/24/17	1B
REVISED:	1/31/18	FILE NAME:	17-119	1B OF 1

MULTI-WELL PLAN SECTION 29, T1N, R65W



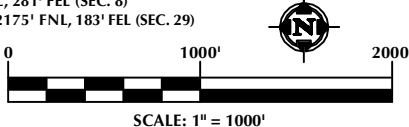
WELL NOTES:

ENGLISH FARMS 8-14HZ
SURFACE: 281' FSL, 329' FEL (SEC. 8)
BOTTOM HOLE: 2176' FNL, 1715' FEL (SEC. 29)
ENGLISH FARMS 8-15HZ
SURFACE: 292' FSL, 319' FEL (SEC. 8)
BOTTOM HOLE: 2179' FNL, 1356' FEL (SEC. 29)
ENGLISH FARMS 8-16HZ
SURFACE: 304' FSL, 310' FEL (SEC. 8)
BOTTOM HOLE: 2177' FNL, 1061' FEL (SEC. 29)
ENGLISH FARMS 8-17HZ
SURFACE: 315' FSL, 300' FEL (SEC. 8)
BOTTOM HOLE: 2178' FNL, 729' FEL (SEC. 29)

ENGLISH FARMS 8-18HZ
SURFACE: 326' FSL, 290' FEL (SEC. 8)
BOTTOM HOLE: 2177' FNL, 525' FEL (SEC. 29)
ENGLISH FARMS 8-19HZ
SURFACE: 338' FSL, 281' FEL (SEC. 8)
BOTTOM HOLE: 2175' FNL, 183' FEL (SEC. 29)

NOTES:

- ▲ INDICATES SECTION CORNER.
- INDICATES CALCULATED CORNER.
- BASIS OF BEARING DERIVED FROM COLORADO COORDINATE SYSTEM OF 1983 NORTH ZONE.
- ALL MEASURED DISTANCES ARE GRID.
- COMBINED SCALE FACTOR: .99972920 CALCULATED FROM THE S. 1/4 CORNER OF SECTION 8, T1N, R65W.
- WELL FOOTAGES ARE MEASURED AT RIGHT ANGLES TO THE SECTION LINES.



WELL PAD - ENGLISH FARMS 8-16HZ

MULTI-WELL PLAN
ENGLISH FARMS 8-14HZ, ENGLISH FARMS 8-15HZ,
ENGLISH FARMS 8-16HZ, ENGLISH FARMS 8-17HZ,
ENGLISH FARMS 8-18HZ & ENGLISH FARMS 8-19HZ
LOCATED IN SECTIONS 8, 17, 20 & 29
T1N, R65W, 6TH P.M.
WELD COUNTY, COLORADO

**Kerr-McGee Oil &
Gas Onshore L.P.**
1099 18th Street
Denver, Colorado 80202



CONSULTING, LLC

SHERIDAN OFFICE 1095 Saberton Avenue
Sheridan, Wyoming 82801
Phone 307-674-0609
LOVELAND OFFICE 1635 Foxtrail Drive, Suite 204
Loveland, Colorado 80538
Phone 970-776-4331

DRAFTED BY:	LMO	CHECKED BY:	RKF	SHEET NO:
DATE DRAFTED:	11/30/17	DATE SURVEYED:	7/24/17	1C
REVISED:	1/31/18	FILE NAME:	17-119	1C OF 1