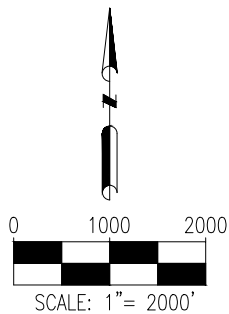
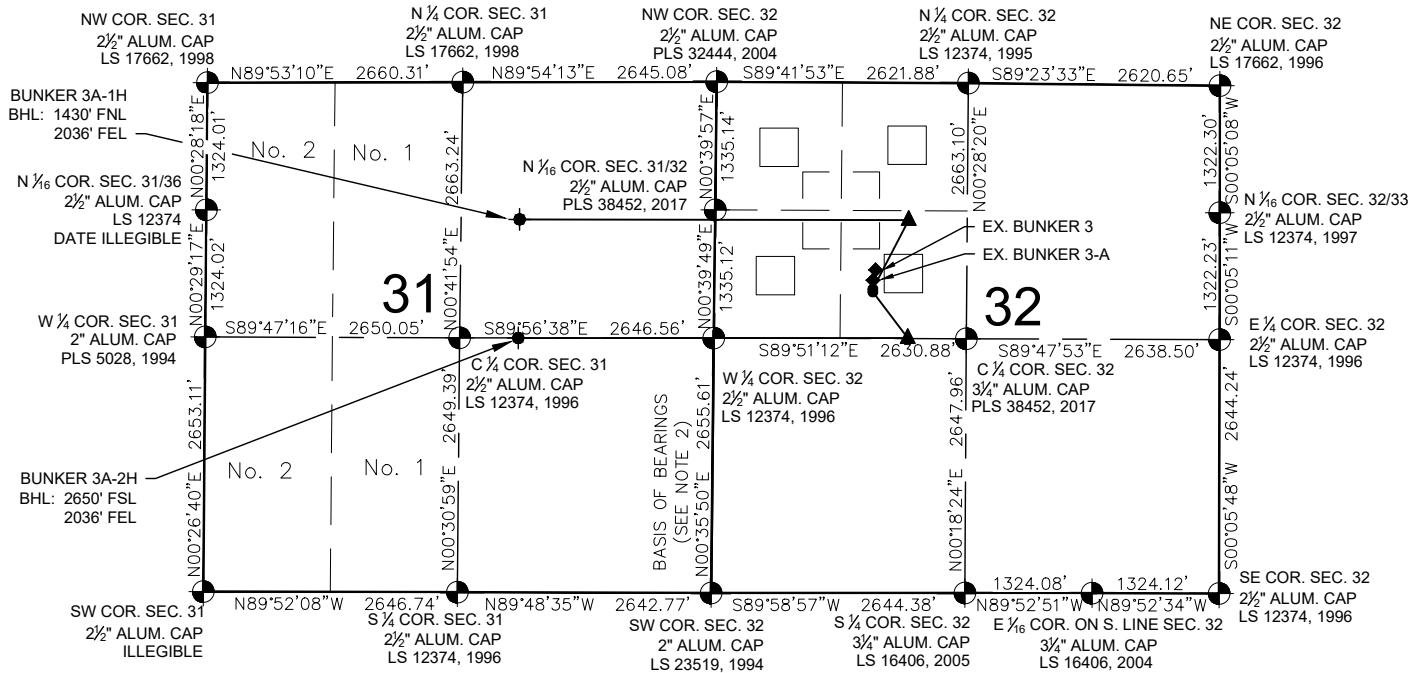








BUNKER 3A PAD MULTI-WELL PLAN



LEGEND

-  = EXISTING MONUMENT  = BOTTOM HOLE
 = CALCULATED POSITION  = LANDING POINT
 = PROPOSED WELL BHL = BOTTOM HOLE LOCATION
 = EXISTING WELL


NOTES:

1. THIS FIELD SURVEY CONFORMS TO THE MINIMUM STANDARDS SET BY THE C.O.G.C.C., RULE NO. 215
2. BEARINGS ARE BASED ON THE ASSUMPTION THAT THE WEST LINE OF THE SOUTHWEST QUARTER OF SECTION 32, BEARS N00°35'50"E BETWEEN THE MONUMENTS SHOWN HEREON.
3. ALL DISTANCES AND BEARINGS SHOWN HEREON ARE GROUND VALUES AS GPS MEASURED IN THE FIELD, WITH TIES TO WELLS MEASURED PERPENDICULAR TO SECTION LINES. THIS LOW DISTORTION PROJECTION (LDP) IS BASED ON THE NORTH AMERICAN DATUM OF 1983, U.S. SURVEY FOOT WITH A LATITUDE ORIGIN OF 40.392540°N, A CENTRAL MERIDIAN LONGITUDE OF 105.002429°W, AND A SCALE FACTOR ON THE CENTRAL MERIDIAN OF 1.000236 (EXACT). THE LDP BASIS OF BEARINGS IS GEODETIC NORTH.
4. FIELD VERIFICATION OF MONUMENTS COMPLETED WITHIN 1 YEAR OF SIGNATURE DATE.

NOTES:

BUNKER 3A-1H TO BE AT 2151' FNL & 1652' FWL.
BOTTOM HOLE AT 1430' FNL & 2036' FEL, SEC. 31.
BUNKER 3A-2H TO BE AT 2181' FNL & 1653' FWL.
BOTTOM HOLE AT 2650' FSL & 2036' FEL, SEC. 31.

EX. BUNKER 3-A IS AT 2061' FNL & 1651' FWL.
EX. BUNKER 3 IS AT 1950' FNL & 1678' FWL.

 <p>7535 Hilltop Circle Denver, CO 80221 (303) 928-7128 www.ascentgeomatics.com</p>	FIELD DATE: 09-14-17		SITE NAME: BUNKER 3A PAD		PREPARED FOR: <div style="text-align: center; font-size: 1.5em; font-weight: bold;"> MAGPIE OPERATING, INC. </div>
	DRAWING DATE: 01-17-18		SURFACE LOCATION: SE 1/4 NW 1/4 SEC. 32 T5N, R68W, 6TH P.M. LARIMER COUNTY, COLORADO		
	BY: JAG	CHECKED: IJM			