

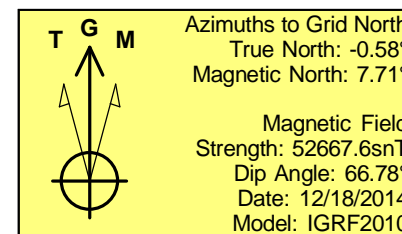
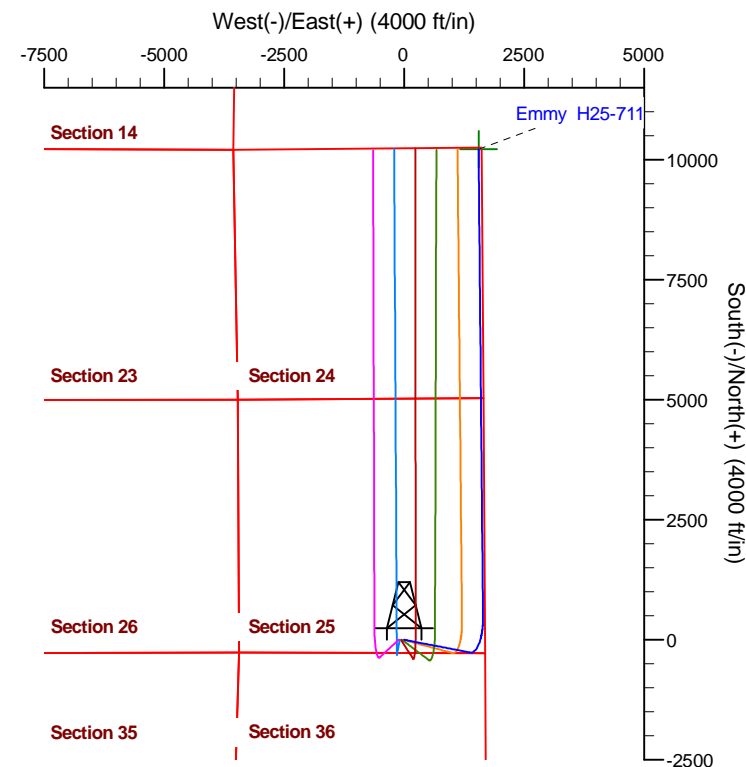
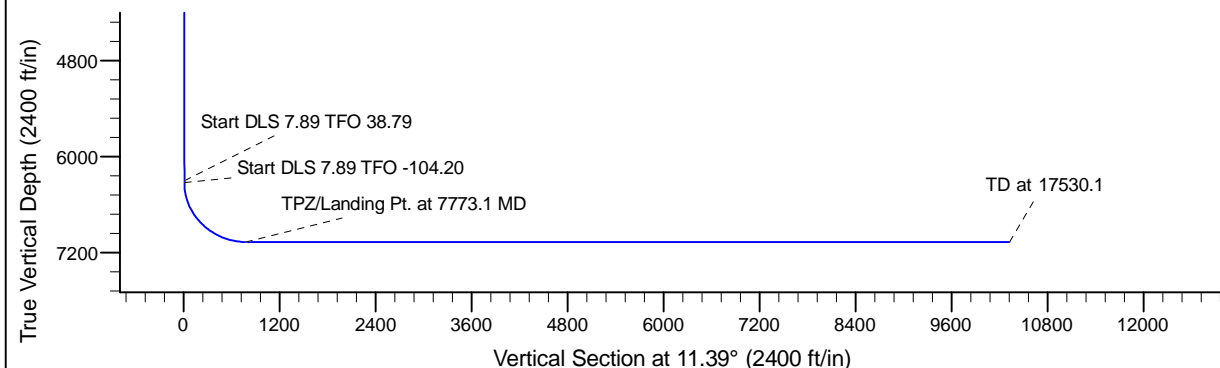
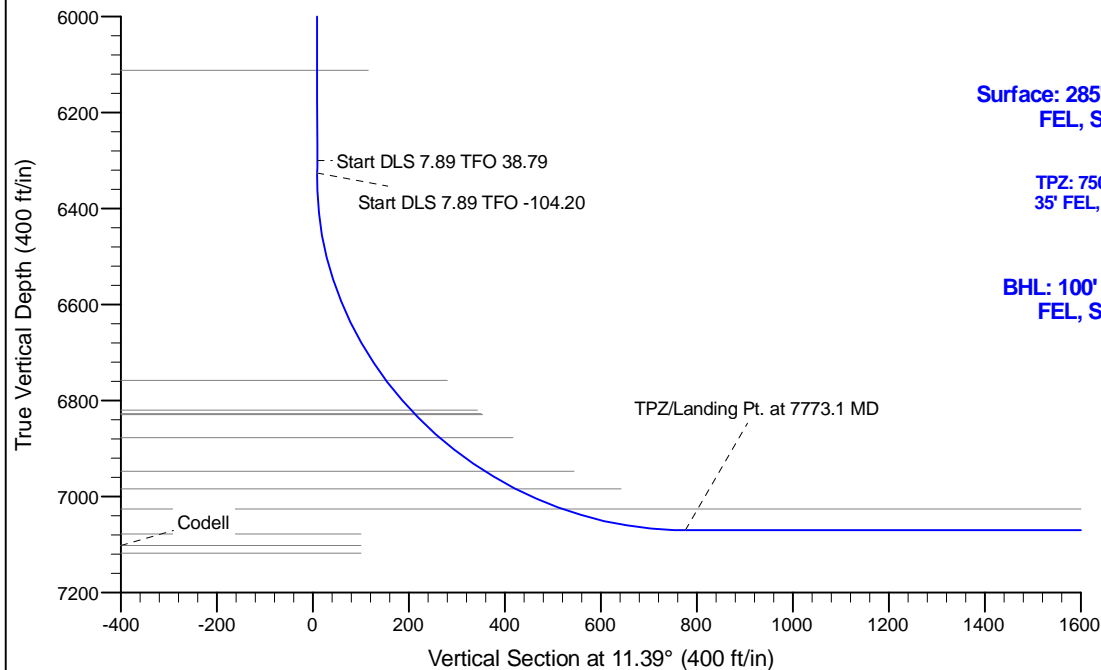
Project: Conceptual Wells  
 Site: DP 408  
 Well: Emmy H25-711  
 Wellbore: Wellbore #1  
 Design: Prelim - Rev 2

# Northern Region Drilling - DJ Basin

Geodetic System: US State Plane 1983  
 Datum: North American Datum 1983  
 Ellipsoid: GRS 1980  
 Zone: Colorado Northern Zone  
 System Datum: Mean Sea Level

## SECTION DETAILS

Sec	MD	Inc	Azi	TVD	+N/-S	+E/-W	Dleg	TFace	VSec	Target
1	0.0	0.00	0.00	0.0	0.0	0.0	0.00	0.00	0.0	
2	2000.0	0.00	0.00	2000.0	0.0	0.0	0.00	0.00	0.0	
3	3000.0	20.00	101.00	2979.8	-33.0	169.6	2.00	101.00	1.2	
4	6533.3	20.00	101.00	6300.0	-263.5	1355.8	0.00	0.00	9.3	
5	6561.0	21.75	104.70	6325.9	-265.8	1365.5	7.89	38.79	9.1	
6	7773.1	90.00	359.46	7070.0	460.0	1645.0	7.89	-104.20	775.7	
7	17530.1	90.00	359.47	7070.0	10216.6	1553.5	0.00	90.00	10322.2	Emmy H25-711 BHL



## WELL DETAILS: Emmy H25-711

Ground Level:	4805.0
Northing	1313190.35
Easting	3248954.74
Latitude	40.189670
Longitude	-104.608870

Plan: Prelim - Rev 2 (Emmy H25-711/Wellbore #1)

Created By: Chad Stich

Date: 13:17, November 01 2017

**OK to submit with 2A as per Noble Drilling**

**11/1/2017**