

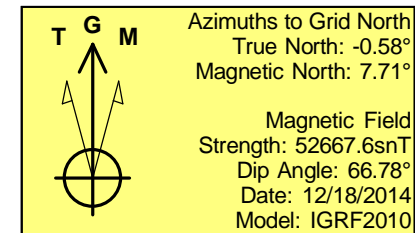
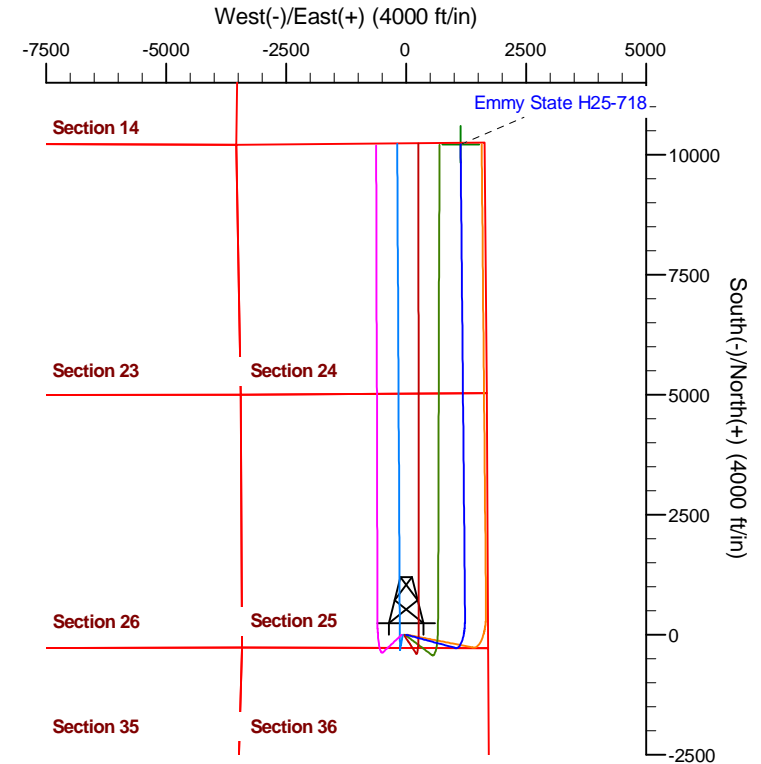
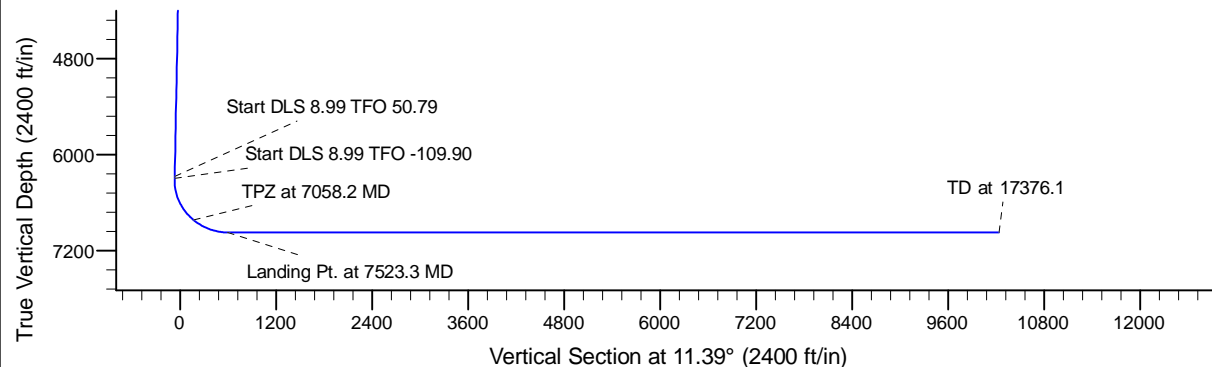
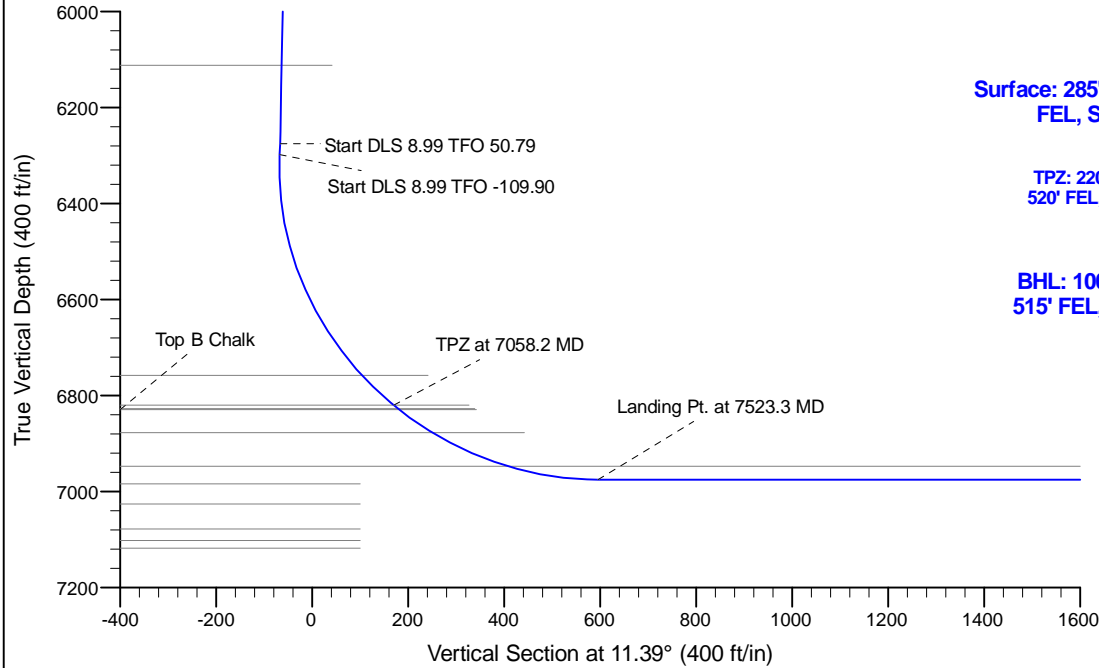
Project: Conceptual Wells
 Site: DP 408
 Well: Emmy State H25-718
 Wellbore: Wellbore #1
 Design: Prelim - Rev 2

Northern Region Drilling - DJ Basin

Geodetic System: US State Plane 1983
 Datum: North American Datum 1983
 Ellipsoid: GRS 1980
 Zone: Colorado Northern Zone
 System Datum: Mean Sea Level

SECTION DETAILS

Sec	MD	Inc	Azi	TVD	+N/-S	+E/-W	Dleg	TFace	Vsect	Target
1	0.0	0.00	0.00	0.0	0.0	0.0	0.00	0.00	0.0	
2	2400.0	0.00	0.00	2400.0	0.0	0.0	0.00	0.00	0.0	
3	3250.0	17.00	105.00	3237.6	-32.4	120.9	2.00	105.00	-7.9	
4	6426.2	17.00	105.00	6275.0	-272.7	1017.9	0.00	0.00	-66.4	
5	6450.5	18.46	110.35	6298.1	-275.0	1024.9	8.99	50.79	-67.3	
6	7523.3	90.00	359.46	6975.0	360.0	1230.0	8.99	-109.90	595.7	
7	17376.1	90.00	359.46	6975.0	10212.4	1137.4	0.00	0.00	10235.9	Emmy H25-718 BHL



WELL DETAILS: Emmy State H25-718

Ground Level: 4805.0	Latitude	Longitude
0.00.0	1313190.12	3248932.39
	40.189670	-104.608950

Plan: Prelim - Rev 2 (Emmy State H25-718/Wellbore #1)

Created By: Chad Stich

Date: 13:54, November 01 2017

OK to submit with 2A as per Noble Drilling

11/1/2017