



Lat40°, Inc. 6250 W. 10th Street, Unit 2, Greeley, CO 970-515-5294

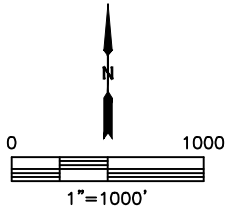
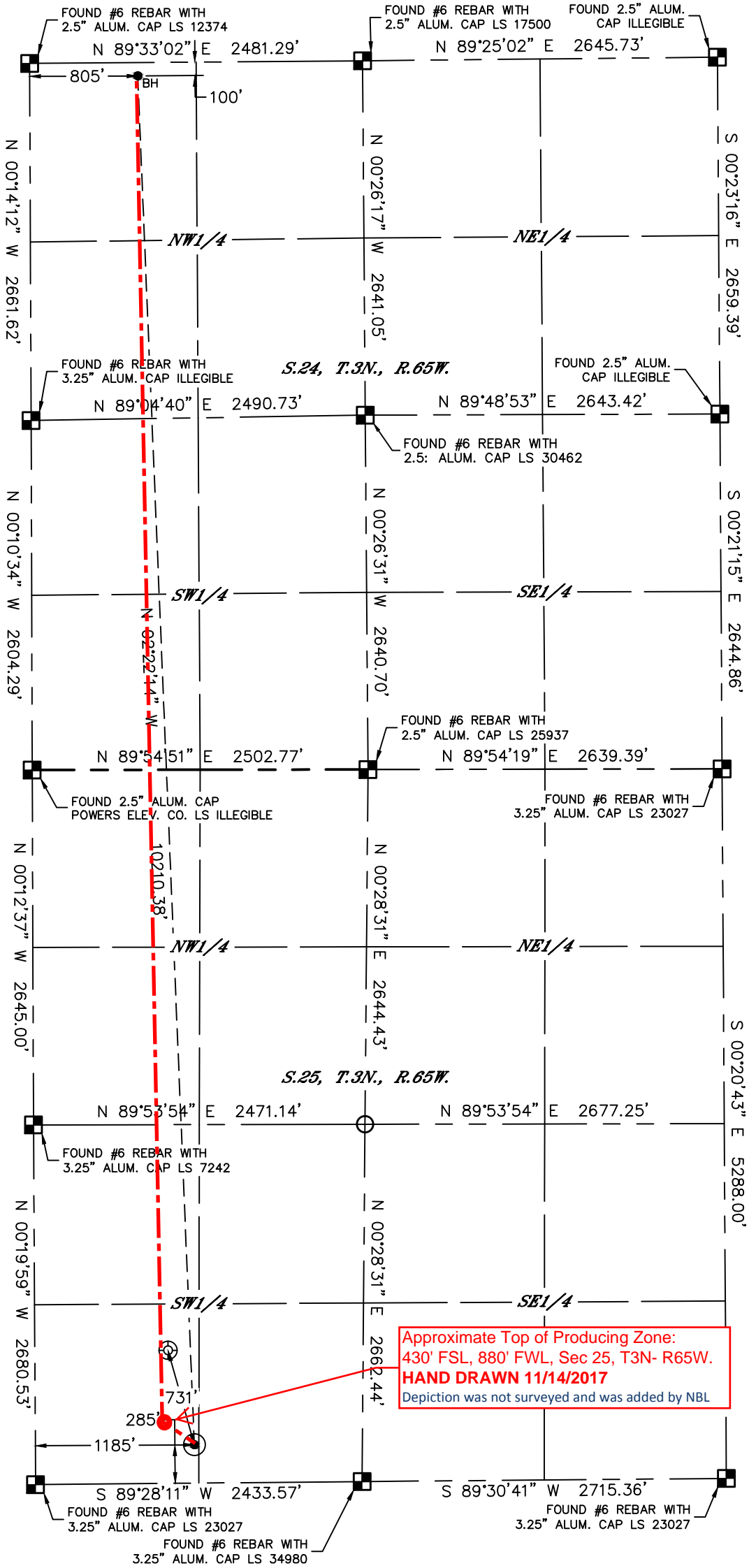
WELL LOCATION CERTIFICATE

EMMY STATE H25-777

SECTION: 25
TOWNSHIP: 3N
RANGE: 65W
6TH. P.M.
WELD COUNTY, CO

APPROVED

By hilarymckenna at 4:01 pm, 11/15/17



CLIENT: NOBLE ENERGY, INC.					LANDMAN: TYLER BEAVERS				
INSTRUMENT OPERATOR: SCOTT SHERARD					SURVEY DATE: 4/3/2017				
SHL FOOTAGE		SHL LAT°	SHL LONG°	SHL PDOP	SHL ELEV (FT.)	SHL 1/4/1/4	SHL S-T-R		
285	FSL	1185	FWL	40.18968	-104.61699	2.2	4817	SWSW	25-3-65

BHL FOOTAGE				BHL LAT°	BHL LONG °	BHL S-T-R
100	FNL	805	FWL	40.21768	-104.61814	24-3-65

- LEGEND
- ALIQUOT MONUMENT AS DESCRIBED
 - CALCULATED POSITION
 - SURFACE HOLE LOCATION (SHL)
 - ENTRY POINT LOCATION (EP)
 - BOTTOM HOLE LOCATION (BHL)
 - EXISTING WELL
 - ABANDONED WELL

NOTE:
1) Bearings shown are Grid Bearings of the Colorado State Plane Coordinate System, North Zone, North American Datum 1983. The lineal dimensions as contained herein are based upon the "U.S. Survey Foot."
2) Distances to section lines measured at 90 degrees from said section lines.
3) Ground elevations are based on an observed GPS elevation (NAVD 1988 DATUM).
4) Latitude and Longitude shown are (NAD 83 DATUM).
5) IMPROVEMENTS: See LOCATION DRAWING for all visible improvements within 500' of oil and gas location.
6) This map does not represent a boundary survey.



Kyle E. Rutz—On behalf of Lat40°, Inc.
Colorado Licensed Professional Land Surveyor No. 38307
DATE: 9/1/2017
PROJECT#: 2017022