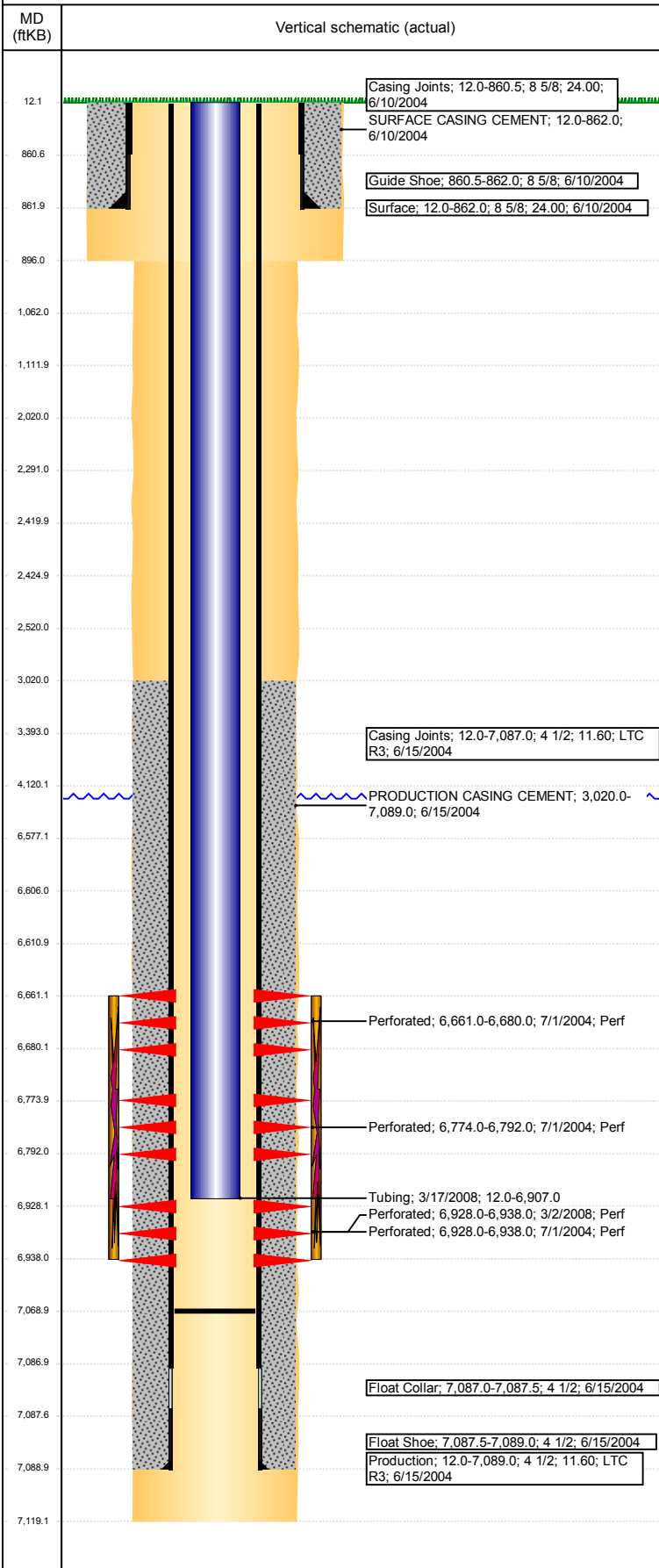


Well Name: CARPIO 22-43

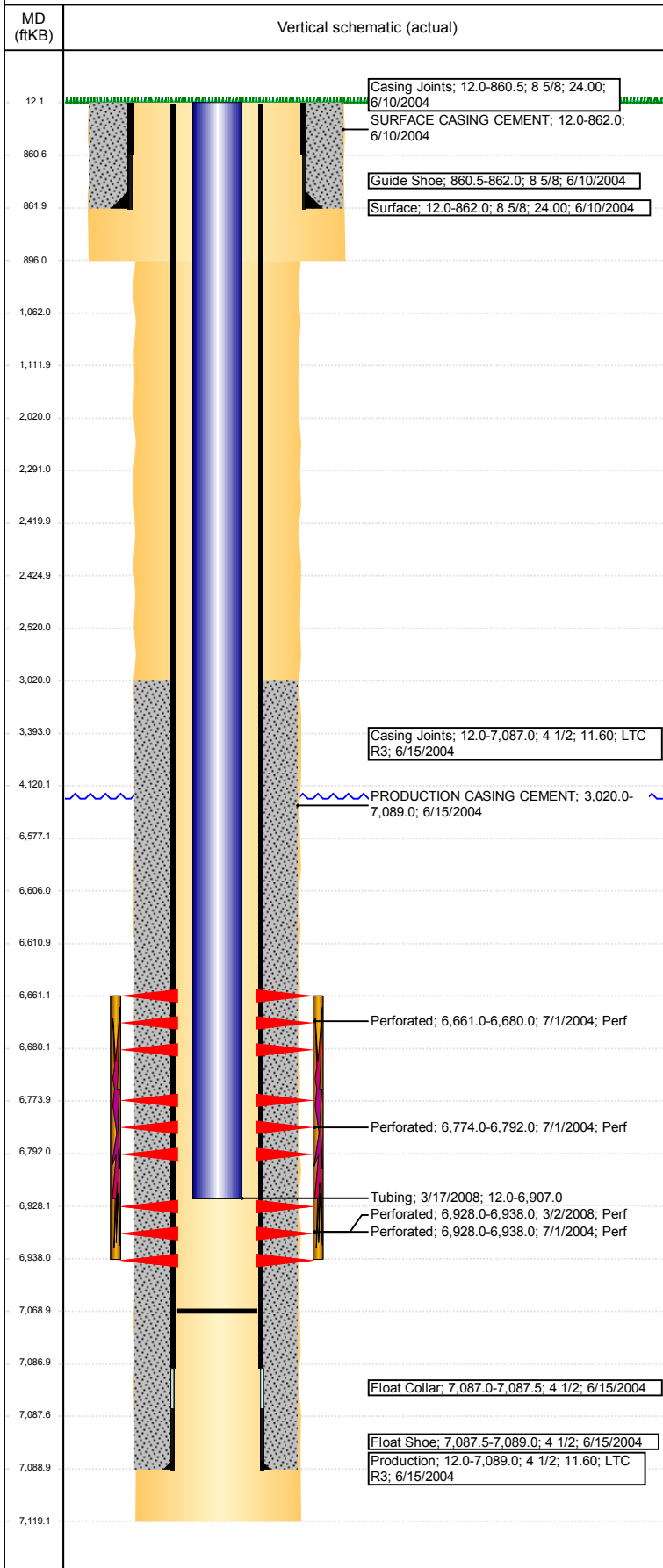
VERTICAL - ORIGINAL HOLE, 2/20/2018 4:42:09 PM



Well Header							
API 05-123-22024		Well Report Center 425777119		Well Configuration Type VERTICAL			
Original KB Elevation (ft) 4,745		KB - GL / MSL (ftKB) 12.00		Spud Date 6/9/2004		P & A Date	
Production Route Watt - B3-06			Well Production Status PR				SoRT Ignore No
Directions To Well				Actual Latitude (°) 40.46622000		Actual Longitude (°) -104.53346000	
Comment							
Congressional Location							
Quarter 3 SW		Quarter 4 SE		Section 22	Township 6	Twntshp N/S Dir N	Range 64
						Range E/W Dir W	
Rig Operator							
Rig Operator							
Plug Back Total Depths							
Date		Depth (ftKB)		Method		Com	
6/28/2004		7,069.0		CASED HOLE LOG		DEPTH LOGGER ON CBL	
Wellbore Sections							
Section Des			Size (in)		Act Top, MD (ftKB)		Act Btm, MD (ftKB)
SURFACE			12 1/4		12		896
PRODUCTION			7 7/8		896		7,119
Zone Statuses							
Zone Name			Status Date			Status	
CODELL			4/1/2008			PR	
NIOBRARA			7/8/2004			PR	
Casing Strings							
Surface, 862.0ftKB							
Casing Description Surface		Run Date 6/10/2004	OD (in) 8 5/8	Wt/Len (l... 24.00	Grade	Top, MD (ft... 12.0	MD (ftKB) 862.0
Production, 7,089.0ftKB							
Casing Description Production		Run Date 6/15/2004	OD (in) 4 1/2	Wt/Len (l... 11.60	Grade LTC R3	Top, MD (ft... 12.0	MD (ftKB) 7,089.0
Cement							
Des			Start Date		Top (ftKB)		Btm (ftKB)
SURFACE CASING CEMENT			6/10/2004		12.0		862.0
PRODUCTION CASING CEMENT			6/15/2004		3,020.0		7,089.0
Proposed Cement							
Des					Top (ftKB)		Btm (ftKB)
Dump Bail					6,577.0		6,606.0
Balance Plug					3,393.0		4,120.0
Cement Squeeze					2,020.0		2,520.0
Cement Squeeze					2,291.0		2,420.0
Cement Squeeze					2,425.0		2,520.0
Shoe Plug					12.0		1,062.0
Shoe Plug					1,062.0		1,112.0
Tubing Strings							
Tubing Description Tubing		Run Date 3/17/2008	String... 2 3/8	ID (in)	Wt (lb/ft)	Grade	Len (ft) 6,895.00
							Set De...
Tubing Components							
Item Des		OD (in)	Wt (lb/ft)	Grade	Jts	Len (ft)	Btm (ftKB)
Tubing		2 3/8			213	6,893.40	6,905.4
Seal Nipple		2 3/8			1	1.10	6,906.5
Notched collar		2 3/8			1	0.50	6,907.0
Other In Hole							
Run Date		Des			OD (in)	Top (ftKB)	Btm (ftKB)
Proposed Other In Hole							
Des				OD (in)		Top (ftKB)	Btm (ftKB)
Cement Retainer				3.99		2,420.0	2,425.0
Cast Iron Bridge Plug				3.99		6,606.0	6,611.0
Logs							
Date		Type				Top, MD (ftKB)	Btm, MD (ftKB)
6/15/2004		COMPENSATED DENSITY				3,400.0	7,119.0
6/15/2004		INDUCTION				862.0	7,119.0

Well Name: CARPIO 22-43

VERTICAL - ORIGINAL HOLE, 2/20/2018 4:42:10 PM



Logs			
Date	Type	Top, MD (ftKB)	Btm, MD (ftKB)
6/28/2004	CBL/CCL/GR	3,000.0	7,067.0
11/3/2015	GYRO	0.0	6,800.0

Perforation Data				
Linked Zone	Sum of Entered Shot Total	Top (ftKB)	Btm (ftKB)	Date
NIOBRARA, ORIGINAL HOLE	76	6,661.00	6,680.00	7/1/2004
NIOBRARA, ORIGINAL HOLE	72	6,774.00	6,792.00	7/1/2004
CODELL, ORIGINAL HOLE	40	6,928.00	6,938.00	7/1/2004
CODELL, ORIGINAL HOLE	40	6,928.00	6,938.00	3/2/2008
Total (Sum)	228			

Proposed Perforations				
Linked Zone	Sum of En...	Top Depth (ftKB)	Btm (ftKB)	Date
	0	2,520.00	2,520.00	2/13/2018
Total (Sum)	0			

Job Supply Amounts					
Supply Item Des	Type	Uni...	Job Category	Total ...	Total ...