

PHOTO: VIEW OF LOCATION STAKES

CAMERA ANGLE: NORTHERLY



PHOTO: VIEW OF LOCATION STAKES

CAMERA ANGLE: EASTERLY

REV: 1 09-29-17 J.J. (NAME CHANGE)

BILL BARRETT CORPORATION

RSU ANSCHUTZ FED 4-62-11 12 SE10 PAD
NE 1/4 SE 1/4, SECTION 10, T4N, R62W, 6th P.M.
WELD COUNTY, COLORADO



UELS, LLC
Corporate Office * 85 South 200 East
Vernal, UT 84078 * (435) 789-1017

TAKEN BY	R.F., C.M.	06-15-17	
DRAWN BY	J.L.G.	08-22-17	
LOCATION PHOTOS			PHOTO 2

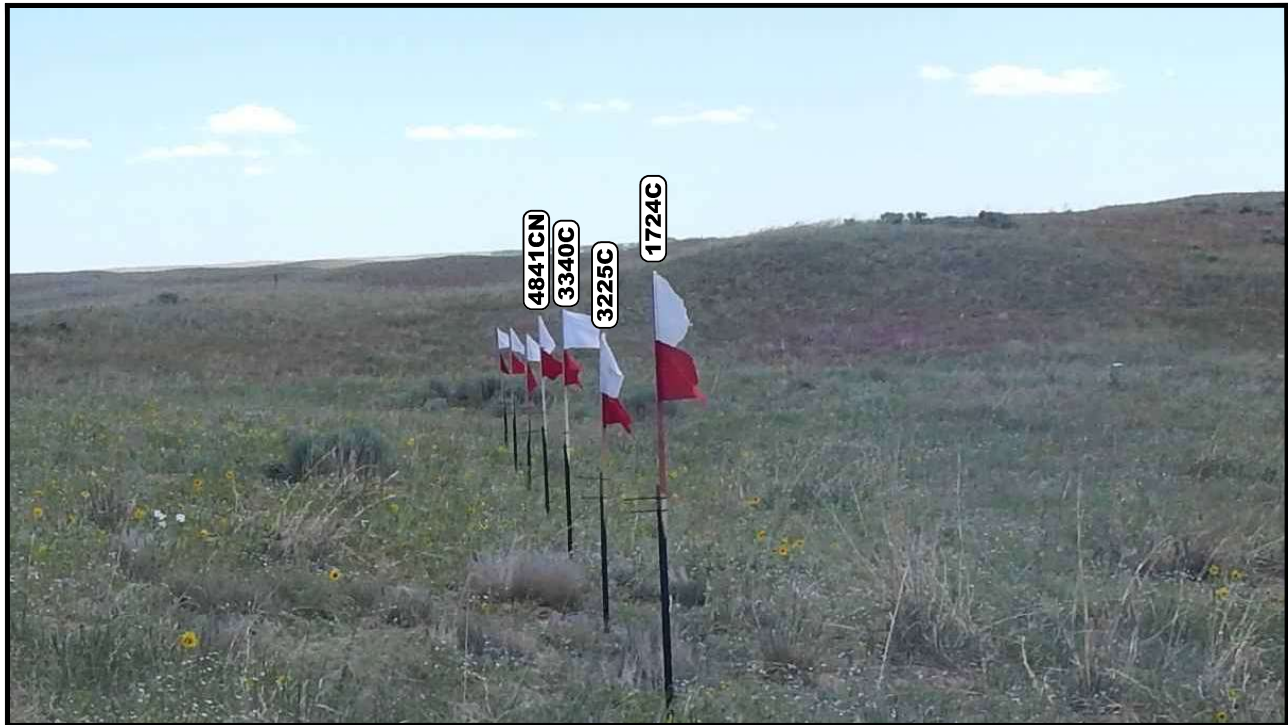


PHOTO: VIEW OF LOCATION STAKES

CAMERA ANGLE: SOUTHERLY

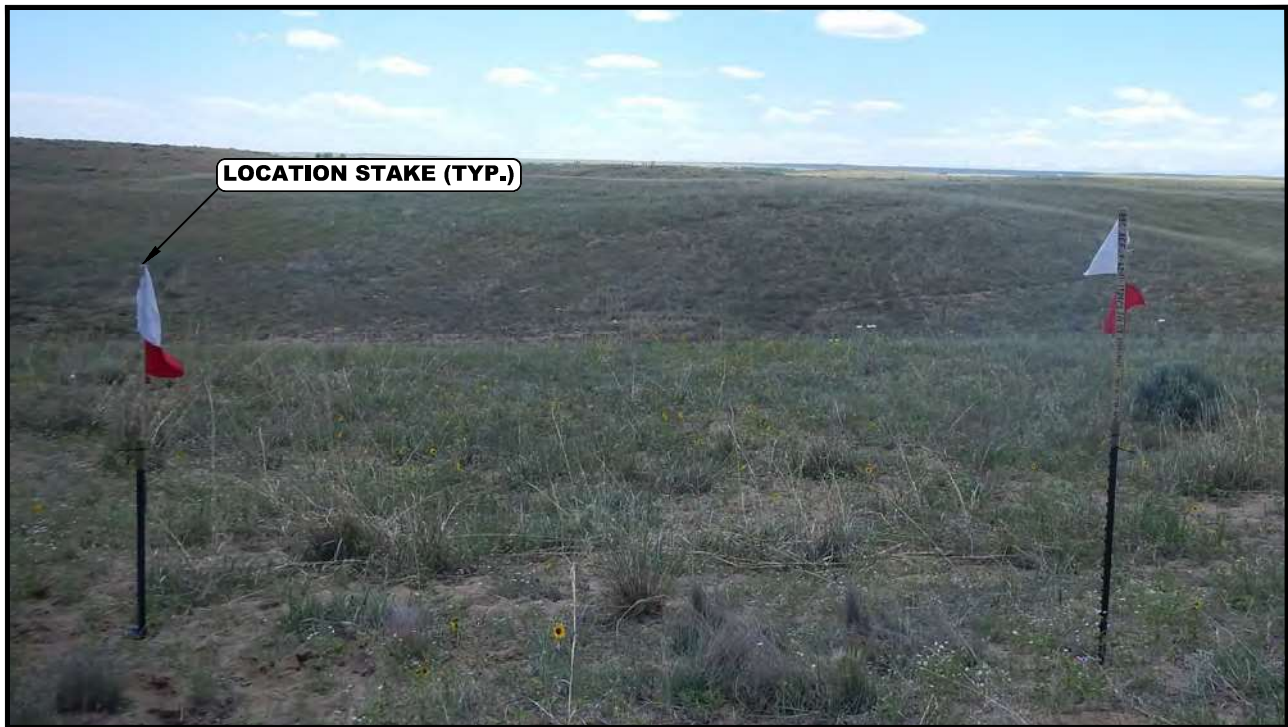


PHOTO: VIEW OF LOCATION STAKES

CAMERA ANGLE: WESTERLY

REV: 1 09-29-17 J.J. (NAME CHANGE)

BILL BARRETT CORPORATION

RSU ANSCHUTZ FED 4-62-11 12 SE10 PAD
NE 1/4 SE 1/4, SECTION 10, T4N, R62W, 6th P.M.
WELD COUNTY, COLORADO



UELS, LLC
Corporate Office * 85 South 200 East
Vernal, UT 84078 * (435) 789-1017

TAKEN BY	R.F., C.M.	06-15-17	
DRAWN BY	J.L.G.	08-22-17	
LOCATION PHOTOS			PHOTO 3