

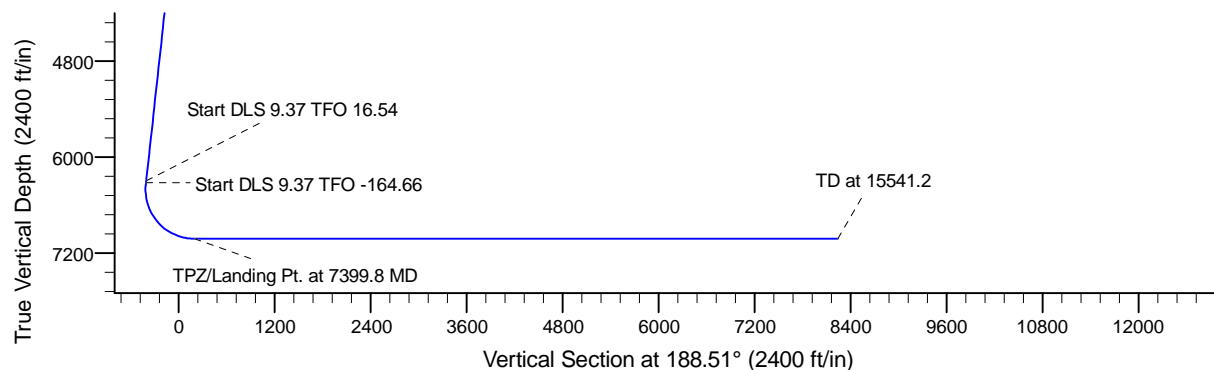
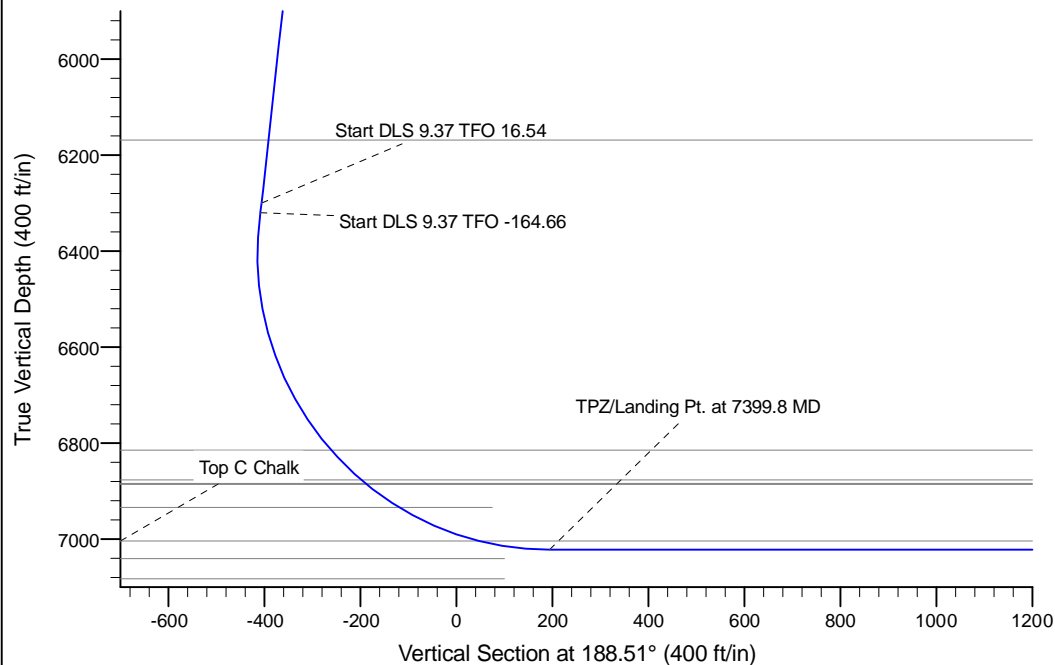
Project: Conceptual Wells
 Site: DP 408
 Well: Hurley H35-774
 Wellbore: Wellbore #1
 Design: Prelim - Rev 2

Northern Region Drilling - DJ Basin

Geodetic System: US State Plane 1983
 Datum: North American Datum 1983
 Ellipsoid: GRS 1980
 Zone: Colorado Northern Zone
 System Datum: Mean Sea Level

SECTION DETAILS

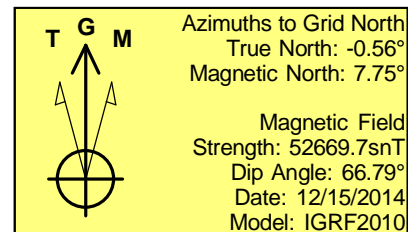
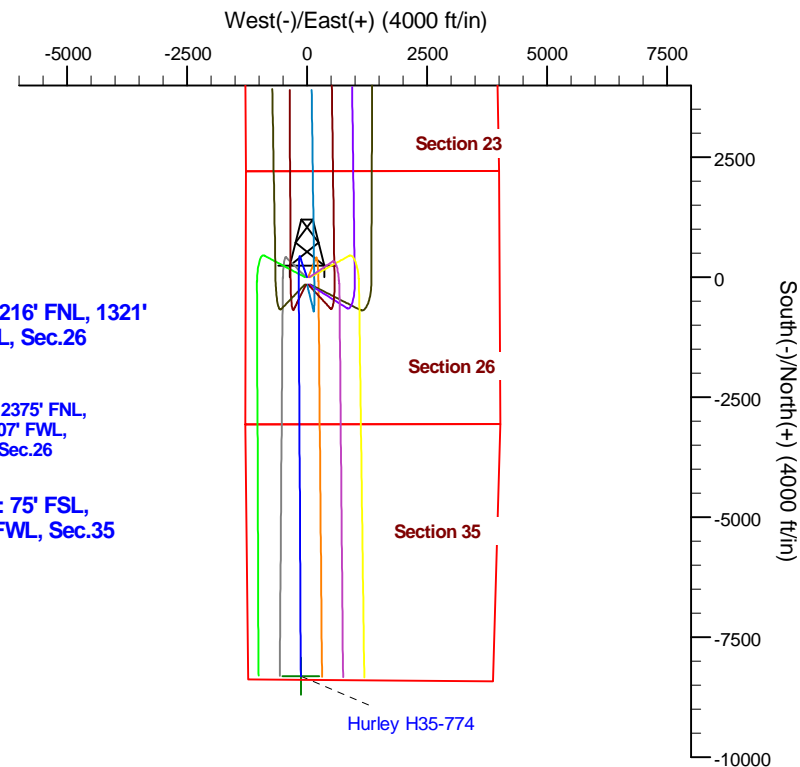
Sec	MD	Inc	Azi	TVD	+N/-S	+E/-W	Dleg	TFace	VSec	Target
1	0.0	0.00	0.00	0.0	0.0	0.0	0.00	0.00	0.0	
2	2400.0	0.00	0.00	2400.0	0.0	0.0	0.00	0.00	0.0	
3	2750.0	7.00	341.00	2749.1	20.2	-7.0	2.00	341.00	-18.9	
4	6327.5	7.00	341.00	6300.0	432.4	-148.9	0.00	0.00	-405.6	
7	15541.2	90.00	179.70	7022.0	-8311.3	-131.4	0.00	90.00	8239.3	Hurley H35-774 BHL



Surface: 2216' FNL, 1321' FWL, Sec.26

TPZ: 2375' FNL, 1107' FWL, Sec.26

BHL: 75' FSL, 1107' FWL, Sec.35



WELL DETAILS: Hurley H35-774

Northing	Ground Level: Easting	4822.0 Latitude	Longitude
0.00.0	1315972.59	3241493.11	40.197510 -104.635480

Plan: Prelim - Rev 2 (Hurley H35-774/Wellbore #1)

Created By: Chad Stich

Date: 14:21, October 30 2017

OK to submit with 2A as per Noble Drilling

10/30/2017