

APPROVED

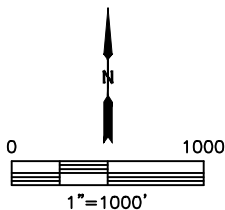
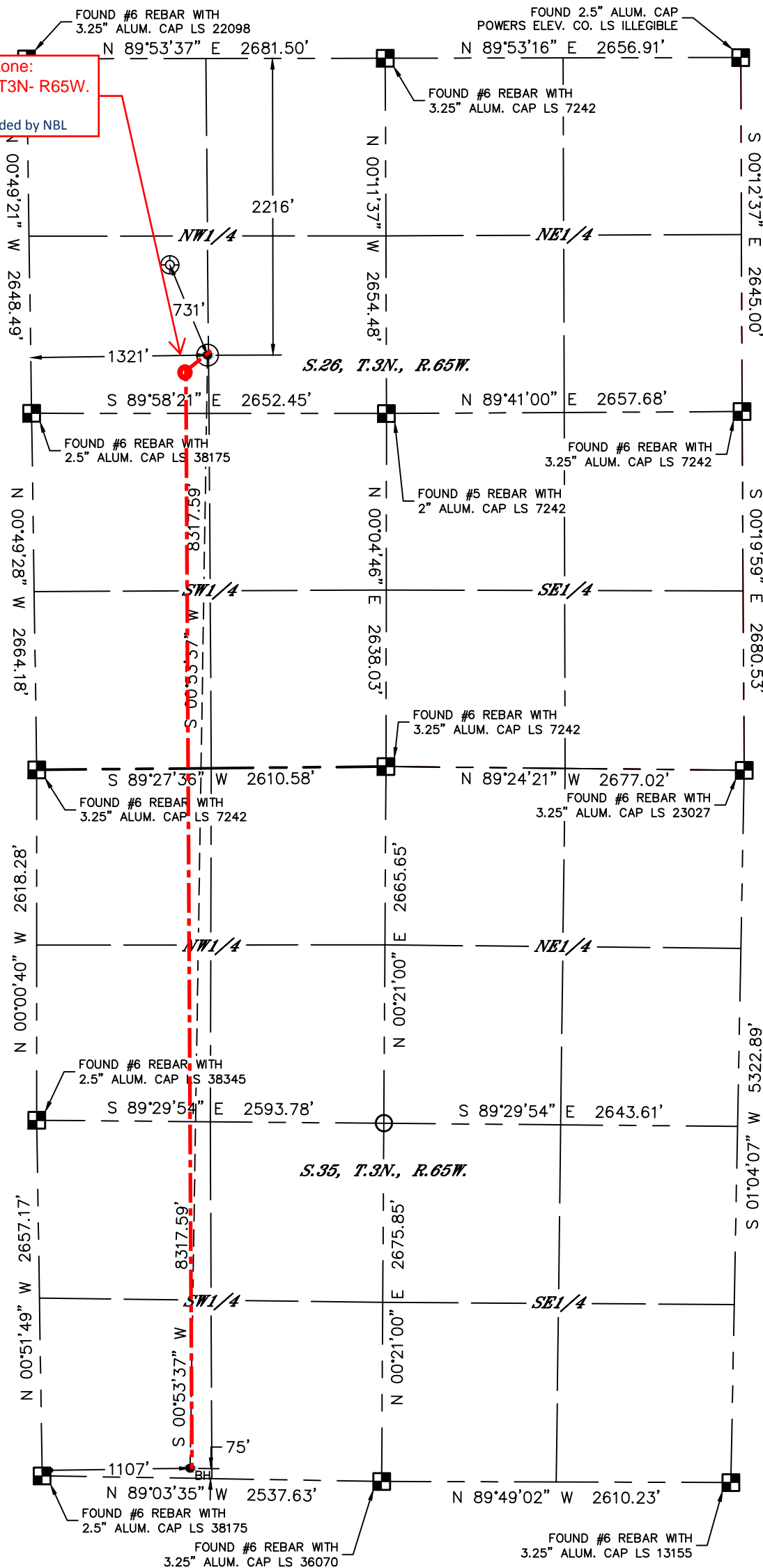
By sethgordon at 4:05 pm, 11/15/17

WELL LOCATION CERTIFICATE

HURLEY H35-774

SECTION: 26
TOWNSHIP: 3N
RANGE: 65W
6TH. P.M.
WELD COUNTY, CO

Approximate Top of Producing Zone:
2375' FNL, 1107' FWL, Sec 26, T3N- R65W.
HAND DRAWN 11/16/2017
Depiction was not surveyed and was added by NBL

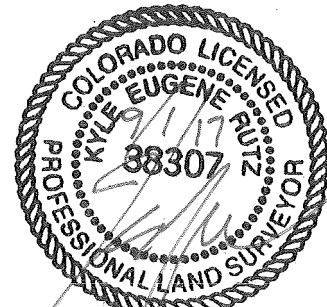


CLIENT: NOBLE ENERGY, INC.					LANDMAN: TYLER BEAVERS		
INSTRUMENT OPERATOR: SCOTT SHERARD					SURVEY DATE: 4/3/2017		
SHL FOOTAGE		SHL LAT°	SHL LONG°	SHL PDOP	SHL ELEV (FT.)	SHL 1/4/1/4	SHL S-T-R
2216	FNL	1321	FWL	40.19751	-104.63548	1.8	4821
						SWNW	26-3-65

BHL FOOTAGE		BHL LAT°	BHL LONG°	BHL S-T-R
75	FSL	1107	FWL	40.17470
				-104.63624
				35-3-65

- NOTE:
- Bearings shown are Grid Bearings of the Colorado State Plane Coordinate System, North Zone, North American Datum 1983. The lineal dimensions as contained herein are based upon the "U.S. Survey Foot."
 - Distances to section lines measured at 90 degrees from said section lines.
 - Ground elevations are based on an observed GPS elevation (NAVD 1988 DATUM).
 - Latitude and Longitude shown are (NAD 83 DATUM).
 - IMPROVEMENTS: See LOCATION DRAWING for all visible improvements within 500' of oil and gas location.
 - This map does not represent a boundary survey.

- LEGEND
- = ALIQUOT MONUMENT AS DESCRIBED
 - = CALCULATED POSITION
 - = SURFACE HOLE LOCATION (SHL)
 - ▲ = ENTRY POINT LOCATION (EP)
 - _{BH} = BOTTOM HOLE LOCATION (BHL)
 - ⊙ = EXISTING WELL
 - ⊙ = ABANDONED WELL



Kyle E. Rutz—On behalf of Lat40°, Inc.
Colorado Licensed Professional Land Surveyor No. 38307
DATE: 9/1/2017
PROJECT#: 2017022