

Lat40°, Inc. 6250 W. 10th Street, Unit 2, Greeley, CO 970-515-5294

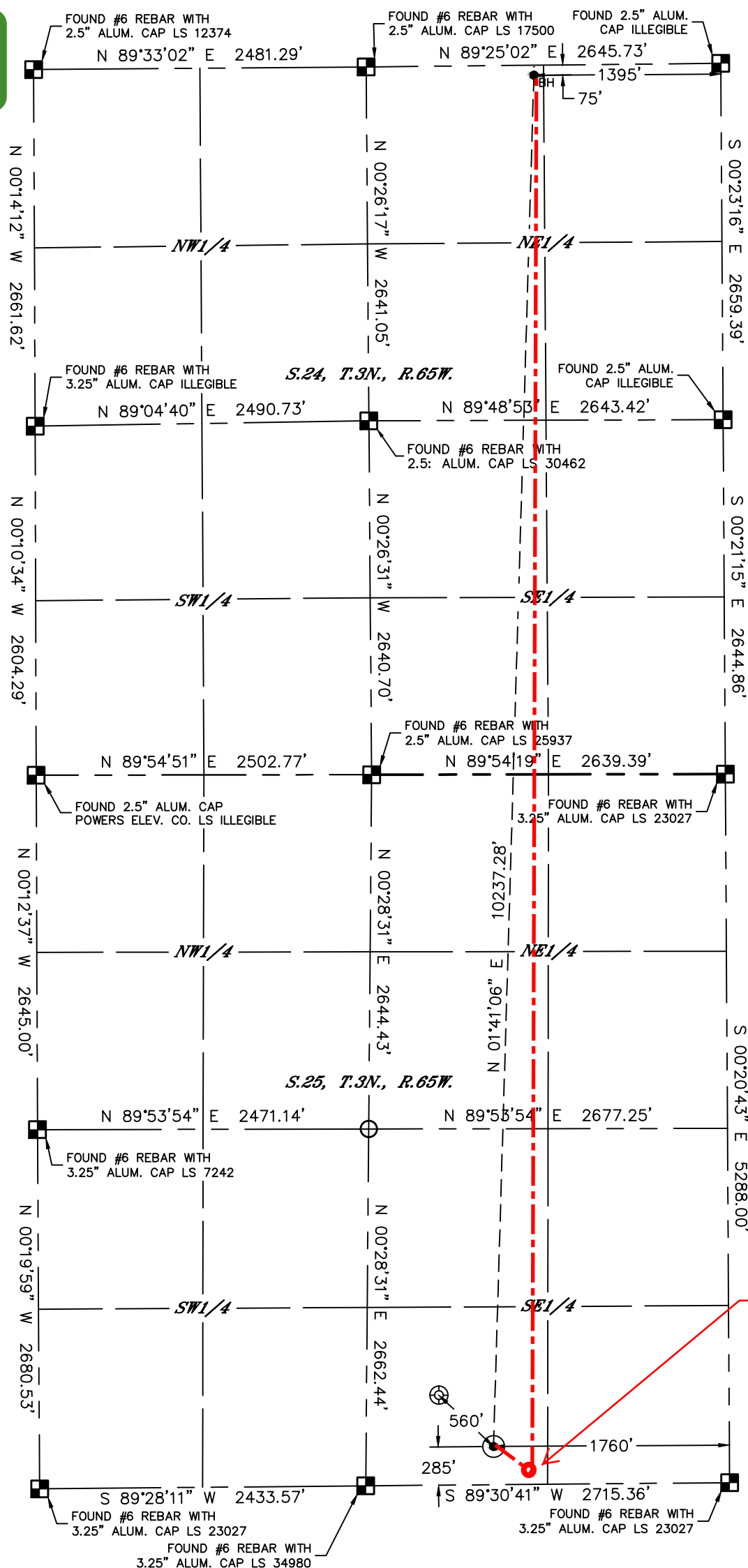
WELL LOCATION CERTIFICATE

EMMY STATE H25-731

SECTION: 25
TOWNSHIP: 3N
RANGE: 65W
6TH. P.M.
WELD COUNTY, CO

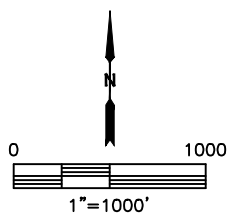
APPROVED

By hiliarymckenna at 1:58 pm, 11/15/17



Approximate Top of Producing Zone:
75' FSL, 1450' FEL, Sec 25, T3N- R65W.
HAND DRAWN 11/14/2017








Depiction was not surveyed and was added by NBL



CLIENT: NOBLE ENERGY, INC.						LANDMAN: TYLER BEAVERS			
INSTRUMENT OPERATOR: SCOTT SHERARD						SURVEY DATE: 4/3/2017		SURFACE USE: CROP LAND	
SHL FOOTAGE				SHL LAT °	SHL LONG °	SHL PDOP	SHL ELEV (FT.)	SHL 1/4/1/4	SHL S-T-R
285	FSL	1760	FEL	40.18967	-104.60911	1.7	4804	SWSE	25-3-65

BHL FOOTAGE				BHL LAT °	BHL LONG °	BHL S-T-R
75	FNL	1395	FFL	40.21774	-104.60766	24-3-65

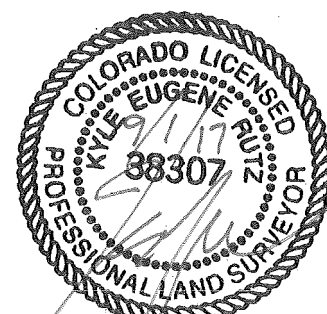
LEGEND

-  = ALIQUOT MONUMENT AS DESCRIBED
 = CALCULATED POSITION
 = SURFACE HOLE LOCATION (SHL)
 = ENTRY POINT LOCATION (EP)
 = BOTTOM HOLE LOCATION (BHL)
 = EXISTING WELL
 = ABANDONED WELL

NOTE:

NOTE:

- 1) Bearings shown are Grid Bearings of the Colorado State Plane Coordinate System, North Zone, North American Datum 1983. The lineal dimensions as contained herein are based upon the "U.S. Survey Foot."
- 2) Distances to section lines measured at 90 degrees from said section lines.
- 3) Ground elevations are based on an observed GPS elevation (NAVD 1988 DATUM).
- 4) Latitude and Longitude shown are (NAD 83 DATUM).
- 5) IMPROVEMENTS: See LOCATION DRAWING for all visible improvements within 500' of oil and gas location.
- 6) This map does not represent a boundary survey.



Kyle E. Rutz—On behalf of Lat40, Inc.
Colorado Licensed Professional Land Surveyor No. 38307
DATE: 9/1/2017
PROJECT#: 2017022