

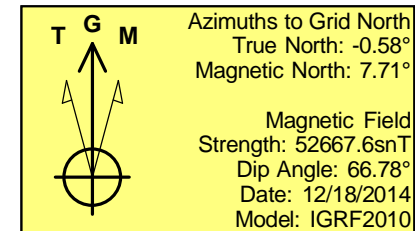
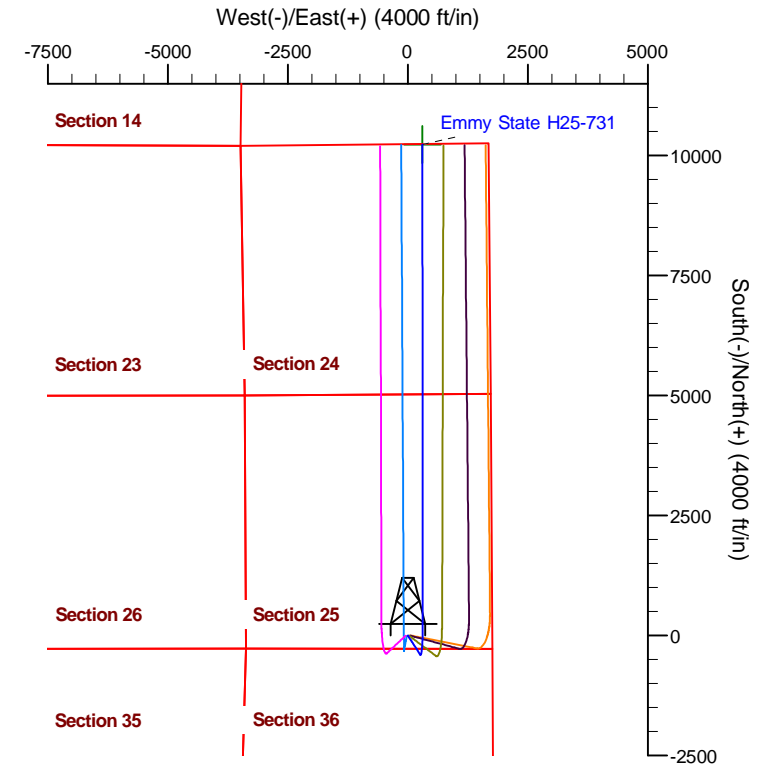
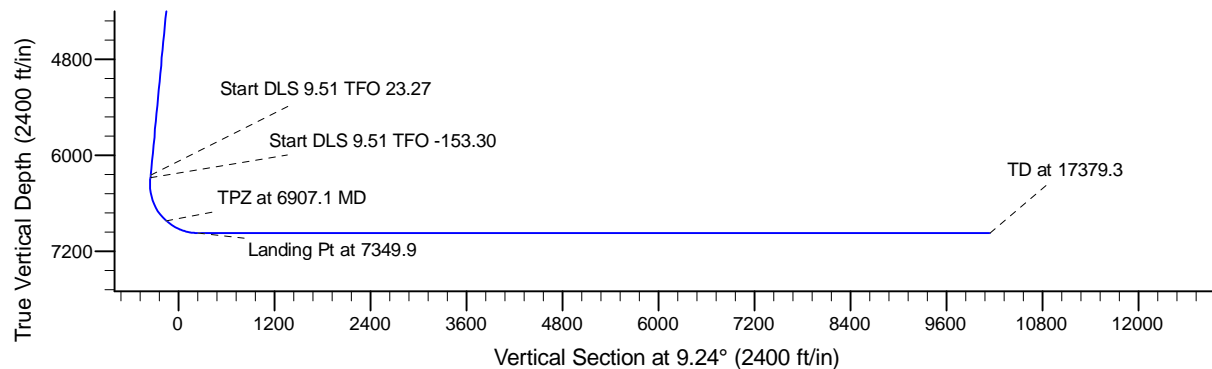
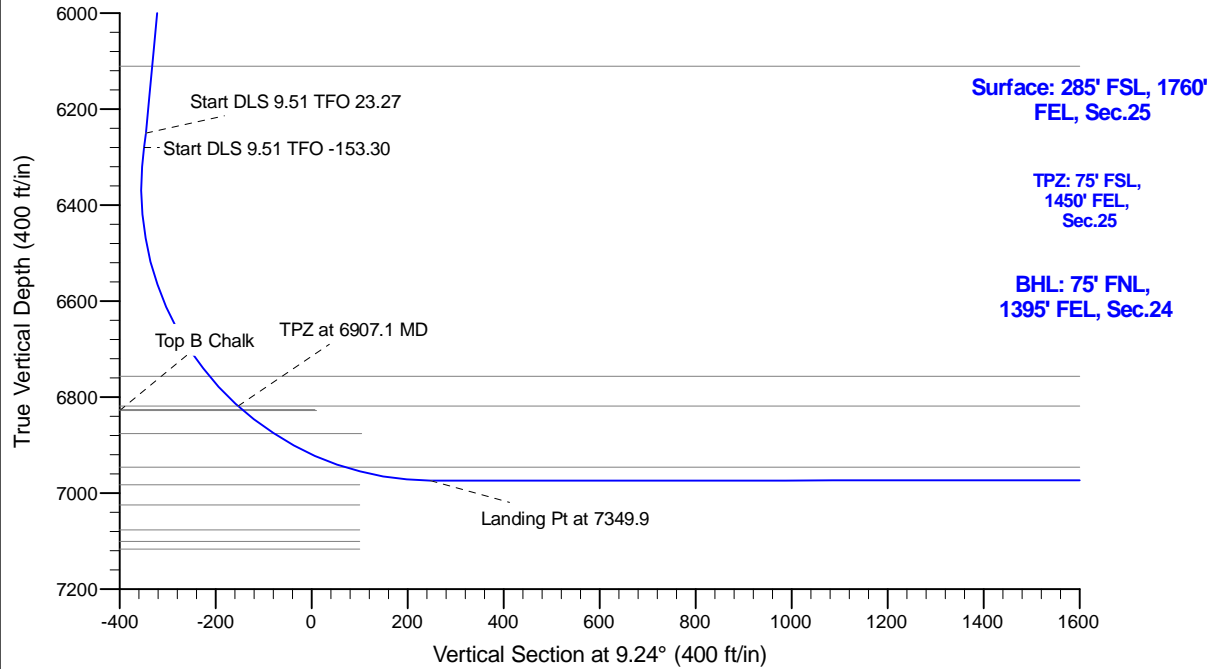
Project: Conceptual Wells
 Site: DP 408
 Well: Emmy State H25-731
 Wellbore: Wellbore #1
 Design: Prelim - Rev 2

Northern Region Drilling - DJ Basin

Geodetic System: US State Plane 1983
 Datum: North American Datum 1983
 Ellipsoid: GRS 1980
 Zone: Colorado Northern Zone
 System Datum: Mean Sea Level

SECTION DETAILS

Sec	MD	Inc	Azi	TVD	+N/-S	+E/-W	Dleg	TFace	VFace	Target
1	0.0	0.00	0.00	0.0	0.0	0.0	0.00	0.00	0.0	
2	2400.0	0.00	0.00	2400.0	0.0	0.0	0.00	0.00	0.0	
3	2762.5	7.25	147.00	2761.5	-19.2	12.5	2.00	147.00	-17.0	
4	6279.1	7.25	147.00	6250.0	-391.4	254.2	0.00	0.00	-345.5	
5	6309.5	9.97	153.60	6280.0	-395.4	256.4	9.51	23.27	-349.0	
6	7349.9	90.00	359.95	6974.0	200.0	310.0	9.51	-153.30	247.2	
7	17379.3	90.00	359.96	6974.0	10229.5	302.2	0.00	90.00	10145.1	Emmy H25-731 BHL



WELL DETAILS: Emmy State H25-731

	Ground Level:	4804.0	
Northing	Easting	Latitude	Longitude
0.00.0	1313189.67	3248887.69	40.189670
			-104.609110

Plan: Prelim - Rev 2 (Emmy State H25-731/Wellbore #1)

Created By: Colby Baxter

Date: 14:56, November 01 2017

OK to submit with 2A as per Noble Drilling

11/1/2017