

Spray, Karen

From: Spray, Karen
Sent: Thursday, May 01, 2008 9:43 AM
To: Steven Hayden (shayden@state.nm.us)
Subject: Drilling Operation - San Juan County

Hi Steve,

I am investigating a water well complaint in Sec 21 T32N R6W – right up against the NM state line. There is a rig in operation just to the south of the line, approximately 36.996 -107.515, that I do not have access to. I believe it is a Burlington. Do you happen to have some details on it that you might be able to share? And have you ever had, or do you have, any water well complaints up in this area? I am specifically looking for spud dates, depth of surface casing, total depth and if it is a horizontal, where the bottomhole is located.

My water well in question is 500 feet deep and screened from 100-500'; they are experiencing both loss of water and a significant increase in TDS which began last November.

Any help would be appreciated.

Thanks!

Karen L. Spray, PG
SW Environmental Protection Specialist
Colorado Oil & Gas Conservation Commission
P.O. Box 2651
Durango, CO 81302-2651
970-259-1619
970-259-9128 (fax)
970-903-1242 (cell)
karen.spray@state.co.us
www.cogcc.state.co.us

 please consider the environment before printing this email

CP
Allison Clugston #1165 - 09289
ST#02 SPUD = 11/9/2007

Spray, Karen

From: Hayden, Steven, EMNRD [steven.hayden@state.nm.us]
Sent: Thursday, May 01, 2008 10:55 AM
To: Spray, Karen
Subject: RE: Drilling Operation - San Juan County

Karen

We have not had any water well complaints in the area. We require cement coverage of all casing strings with a minimum of 100' overlap.

The closest new wells I show to this are in 12, T32N, R7W. They are both in SE/4, NW/4 and are directional holes. The lat/long you gave me is in the NE/4 of Sec. 12. Sec. 7 of 32N, 6W also borders Sec 21 on the south, but has no new wells. You can check all of this out from our well files:

<http://www.emnrd.state.nm.us/ocd/>

Select: OCD Online: Imaging: Well Files. Search by Location, well name or API#.

The Allison Unit #13N API# 30 045 34376 was drilled in February 08 and has a bottom hole target of n 36.997° and w 107.5210°. It had cement circulated on the 7" intermediate from 4920' to surface.

The Allison Unit #13P API# 3004534352 had a target BHL of n 36.99861° and w 107.51969°. It reported cement circulated from 3320" to surface.

Neither of these wells has reported completion as of 5/1/08.

Steve Hayden
District Geologist 505 334 6178 Ext 14
NM OCD District 3 steven.hayden@state.nm.us
1000 Rio Brazos Rd
Aztec, NM 87410

Dakota wells

From: Spray, Karen [mailto:Karen.Spray@state.co.us]
Sent: Thursday, May 01, 2008 9:43 AM
To: Hayden, Steven, EMNRD
Subject: Drilling Operation - San Juan County

Hi Steve,

I am investigating a water well complaint in Sec 21 T32N R6W -- right up against the NM state line. There is a rig in operation just to the south of the line, approximately 36.996 -107.515, that I do not have access to. I believe it is a Burlington. Do you happen to have some details on it that you might be able to share? And have you ever had, or do you have, any water well complaints up in this area? I am specifically looking for spud dates, depth of surface casing, total depth and if it is a horizontal, where the bottomhole is located.

My water well in question is 500 feet deep and screened from 100-500'; they are experiencing both loss of water and a significant increase in TDS which began last November.

Any help would be appreciated.

Thanks!

Karen L. Spray, PG
SW Environmental Protection Specialist
Colorado Oil & Gas Conservation Commission
P.O. Box 2651
Durango, CO 81302-2651
970-259-1619
970-259-9128 (fax)
970-903-1242 (cell)
karen.spray@state.co.us

05/01/2008

Spray, Karen

From: Spray, Karen
Sent: Thursday, May 01, 2008 10:07 AM
To: 'clugspl@cononcophillips.com'
Cc: Wurtz, Jack G
Subject: Spud Dates on Allison Unit 116S and 116T
Importance: High

Hi Patsy:

I am doing an investigation on a water well complaint in Sec 21 T32N R6W. Can I get the spud dates for your Allison Unit 116S wells and 116T well, if they have been spudded already? I think the 116S spudded on 11/9/2007 and the 116S#2 spudded on 4/6/2008. Has the 116T spudded yet? Or is it next? And have any of these wells been stimulated or gone into production yet? If they have, if I could get the dates...

I also think you have a well on the NM side that is just south of Sec 20 – there is a mast up. Can you give me any information on this well too? Name, API, location, spud date, horizontal surveys- if horizontal, TD, surface casing depth? I do not have ready access to these records and have contacted NMOCD to get this information as well.

Any help is appreciated. The water well in question is 500 feet deep, with screen from 100-500 feet. They have lost water and their TDS has notably increased since last November.

Thanks,

Karen L. Spray, PG
SW Environmental Protection Specialist
Colorado Oil & Gas Conservation Commission
P.O. Box 2651
Durango, CO 81302-2651
970-259-1619
970-259-9128 (fax)
970-903-1242 (cell)
karen.spray@state.co.us
www.cogcc.state.co.us



please consider the environment before printing this email

Oil Conservation Division
1220 S. St Francis Dr.
Santa Fe, NM 87505

APPLICATION FOR PERMIT TO DRILL, RE-ENTER, DEEPEN, PLUGBACK, OR ADD A ZONE

| | | |
|--|----------------------------------|-------------------------------|
| 1. Operator Name and Address BURLINGTON RESOURCES OIL & GAS COMPANY LP 3401 E. 30TH STREET FARMINGTON, NM 87402 | | 2. OGRID Number 14538 |
| | | 3. API Number 30-045-34376 |
| 4. Property Code 6784 | 5. Property Name ALLISON UNIT | 6. Well No. 013N |

7. Surface Location

| UL - Lot | Section | Township | Range | Lot Idn | Feet From | N/S Line | Feet From | E/W Line | County |
|----------|---------|----------|-------|---------|-----------|----------|-----------|----------|----------|
| F | 12 | 32N | 07W | 3 | 132 | N | 1624 | W | SAN JUAN |

8. Pool Information

| | |
|---------------------------------|-------|
| BASIN DAKOTA (PRORATED GAS) | 71599 |
| BLANCO-MESAVERDE (PRORATED GAS) | 72319 |

Additional Well Information

| | | | | |
|--|----------------------------|--|---------------------------|--|
| 9. Work Type New Well | 10. Well Type GAS | 11. Cable/Rotary | 12. Lease Type Private | 13. Ground Level Elevation 6354 |
| 14. Multiple Y | 15. Proposed Depth 7913 | 16. Formation Dakota Formation | 17. Contractor | 18. Spud Date |
| Depth to Ground water 101 | | Distance from nearest fresh water well > 1000 | | Distance to nearest surface water 999 |
| Pit: Liner: Synthetic <input checked="" type="checkbox"/> 12 mils thick Clay <input type="checkbox"/> Pit Volume: 4400 bbls Drilling Method: Closed Loop System <input type="checkbox"/> Fresh Water <input type="checkbox"/> Brine <input type="checkbox"/> Diesel/Oil-based <input type="checkbox"/> Gas/Air <input type="checkbox"/> | | | | |

19. Proposed Casing and Cement Program

| Type | Hole Size | Casing Type | Casing Weight/ft | Setting Depth | Sacks of Cement | Estimated TOC |
|------|-----------|-------------|------------------|---------------|-----------------|---------------|
| Surf | 12.25 | 9.63 | 32.3 | 200 | 188 | 0 |
| Intl | 8.75 | 7 | 20 | 4400 | 1060 | 0 |
| Prod | 6.25 | 4.5 | 10.5 | 7913 | 480 | 4300 |

Casing/Cement Program: Additional Comments

sacks of cement are stated in cubic feet, there will be 2 weights on the production 4.5" casing (10.5/11.6)

Proposed Blowout Prevention Program

| Type | Working Pressure | Test Pressure | Manufacturer |
|-----------|------------------|---------------|--------------|
| DoubleRam | 2000 | 2000 | Schafer |

I hereby certify that the information given above is true and complete to the best of my knowledge and belief.
I further certify that the drilling pit will be constructed according to NMOCB guidelines ☐ a general permit ☒, or an (attached) alternative OCD-approved plan ☐.

Printed Name: Electronically filed by Juanita Farrell

Title: Regulatory Specialist

Email Address: juanita.r.farrell@conocophillips.com

Date: 7/26/2007

Phone: 505-599-3419

OIL CONSERVATION DIVISION

Approved By: Charlie Perrin

Title: District Supervisor

Approved Date: 8/8/2007

Expiration Date: 8/8/2008

Conditions of Approval Attached

DISTRICT 1
1625 N. French Dr., Hobbs, N.M. 88240

DISTRICT #
1301 W. Grand Ave., Artesia, N.M. 08210

DISTRICT III
1000 Res. Brazos Rd. Aztec, N.M. 87410

DISTRICT IV
1920 South St. Francis Dr., Santa Fe, NM 87505

State of New Mexico
Energy, Minerals & Natural Resources Department

OIL CONSERVATION DIVISION

1220 South St. Francis Dr.
Santa Fe, NM 87506

Form C-102

Revised October 12, 2005

Submit to Appropriate District Office

State Lease 4 Copies

Free Lease - 3 Copies

☐ AMENDED REPORT

WELL LOCATION AND ACREAGE DEDICATION PLAT

| | | |
|------------------------------------|---|---|
| ¹ API Number 30-045- | ² Pool Code 72319/71599 | ³ Pool Name Blanco Mesaverde/Basin Dakota |
| ⁴ Property Code 6784 | ⁵ Property Name ALLISON UNIT | ⁶ Well Number 13N |
| ⁷ OGRIID No. 14538 | ⁸ Operator Name BURLINGTON RESOURCES OIL & GAS COMPANY LP | ⁹ Elevation 6354 |

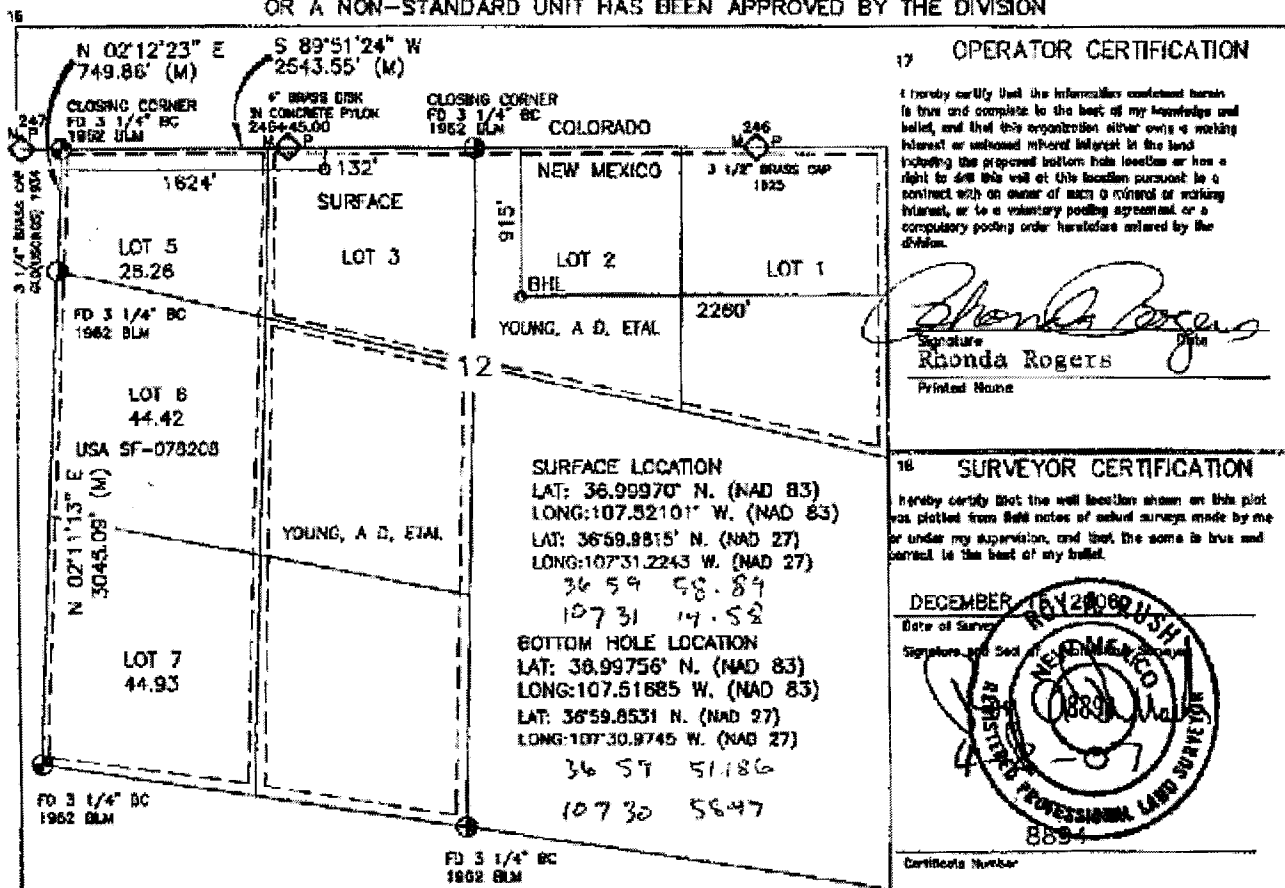
¹⁰ Surface Location

| | | | | | | | | | |
|---------------|---------|----------|-------|---------|---------------|------------------|---------------|----------------|----------|
| UL or lot no. | Section | Township | Range | Lot Ide | East from the | North/South line | East from the | East/West line | County |
| 3 | 12 | 32-N | 7-W | | 132 | NORTH | 1624 | WEST | SAN JUAN |

¹⁹ Bottom Hole Location If Different From Surface

| | | | | | | | | | |
|-------------------|---------|------------------|-------|----------------------|----------------|------------------|----------------|----------------|----------|
| U/L or lot no. | Section | Township | Range | Lot No. | Feet from line | North/South line | Feet from line | East/West line | County |
| 2 | 12 | 32-N | 7-W | | 915 | NORTH | 2250 | EAST | SAN JUAN |
| **Dedicated Acres | | **Joint or Int'l | | **Consolidation Code | | **Order No. | | | |
| 414.90 | | | | | | | | | |

NO ALLOWABLE WILL BE ASSIGNED TO THIS COMPLETION UNTIL ALL INTERESTS HAVE BEEN CONSOLIDATED
OR A NON-STANDARD UNIT HAS BEEN APPROVED BY THE DIVISION



A right-angled triangle is shown with a horizontal base of 1396, a vertical height of 783, and a hypotenuse of 1608.

. 788 mls

1520.6 ft

Oil Conservation Division
1220 S. St Francis Dr.
Santa Fe, NM 87505

APPLICATION FOR PERMIT TO DRILL, RE-ENTER, DEEPEN, PLUGBACK, OR ADD A ZONE

| | | |
|--|----------------------------------|-------------------------------|
| 1. Operator Name and Address BURLINGTON RESOURCES OIL & GAS COMPANY LP 3401 E. 30TH STREET FARMINGTON, NM 87402 | | 2. OGRID Number 14538 |
| | | 3. API Number 30-045-34376 |
| 4. Property Code 6784 | 5. Property Name ALLISON UNIT | 6. Well No. 013N |

7. Surface Location

| | | | | | | | | | |
|---------------|---------------|-----------------|--------------|--------------|------------------|---------------|-------------------|---------------|--------------------|
| UL - Lot F | Section 12 | Township 32N | Range 07W | Lot Idn 3 | Feet From 132 | N/S Line N | Feet From 1624 | E/W Line W | County SAN JUAN |
|---------------|---------------|-----------------|--------------|--------------|------------------|---------------|-------------------|---------------|--------------------|

8. Pool Information

| | |
|---------------------------------|-------|
| BASIN DAKOTA (PRORATED GAS) | 71599 |
| BLANCO-MESAVERDE (PRORATED GAS) | 72319 |

Additional Well Information

| | | | | |
|--|----------------------------|--|---------------------------|--|
| 9. Work Type New Well | 10. Well Type GAS | 11. Cable/Rotary | 12. Lease Type Private | 13. Ground Level Elevation 6354 |
| 14. Multiple Y | 15. Proposed Depth 7913 | 16. Formation Dakota Formation | 17. Contractor | 18. Spud Date |
| Depth to Ground water 101 | | Distance from nearest fresh water well > 1000 | | Distance to nearest surface water 999 |
| Pit: Liner: Synthetic <input checked="" type="checkbox"/> 12 _____ mils thick Clay <input type="checkbox"/> Pit Volume: 4400 _____ bbls Drilling Method: Closed Loop System <input type="checkbox"/> Fresh Water <input type="checkbox"/> Brine <input type="checkbox"/> Diesel/Oil-based <input type="checkbox"/> Gas/Air <input type="checkbox"/> | | | | |

19. Proposed Casing and Cement Program

| Type | Hole Size | Casing Type | Casing Weight/ft | Setting Depth | Sacks of Cement | Estimated TOC |
|------|-----------|-------------|------------------|---------------|-----------------|---------------|
| Surf | 12.25 | 9.63 | 32.3 | 200 | 188 | 0 |
| Int1 | 8.75 | 7 | 20 | 4400 | 1060 | 0 |
| Prod | 6.25 | 4.5 | 10.5 | 7913 | 480 | 4300 |

Casing/Cement Program: Additional Comments

| |
|---|
| sacks of cement are stated in cubic feet, there will be 2 weights on the production 4.5" casing (10.5/11.6) |
|---|

Proposed Blowout Prevention Program

| Type | Working Pressure | Test Pressure | Manufacturer |
|------------|------------------|---------------|--------------|
| Double Ram | 2000 | 2000 | Schafer |

I hereby certify that the information given above is true and complete to the best of my knowledge and belief.

I further certify that the drilling pit will be constructed according to NMOCD guidelines ☐ a general permit ☒ or an (attached) alternative OCD-approved plan ☐.

Printed Name: Electronically filed by Juanita Farrell

Title: Regulatory Specialist

Email Address: juanita.r.farrell@conocophillips.com

Date: 7/26/2007

Phone: 505-599-3419

OIL CONSERVATION DIVISION

Approved By: Charlie Perrin

Title: District Supervisor

Approved Date: 8/8/2007

Expiration Date: 8/8/2008

Conditions of Approval Attached

DISTRICT I
1625 N. French Dr., Hobbs, N.M. 88240

DISTRICT II
1301 W. Grand Ave., Artesia, N.M. 88210

DISTRICT III
1000 Rio Brazos Rd., Aztec, N.M. 87410

DISTRICT IV
1220 South St. Francis Dr., Santa Fe, NM 87505

State of New Mexico
Energy, Minerals & Natural Resources Department

OIL CONSERVATION DIVISION
1220 South St. Francis Dr.
Santa Fe, NM 87505

Form C-102
Revised October 12, 2005
Submit to Appropriate District Office
State Lease - 4 Copies
Fee Lease - 3 Copies

☐ AMENDED REPORT

WELL LOCATION AND ACREAGE DEDICATION PLAT

| | | |
|------------------------------------|---|---|
| ¹ API Number 30-045- | ² Pool Code 72319/71599 | ³ Pool Name Blanco Mesaverde/Basin Dakota |
| ⁴ Property Code 6784 | ⁵ Property Name ALLISON UNIT | ⁶ Well Number 13N |
| ⁷ GRID No. 14538 | ⁸ Operator Name BURLINGTON RESOURCES OIL & GAS COMPANY LP | ⁹ Elevation 6354 |

¹⁰ Surface Location

| UL or lot no. | Section | Township | Range | Lot Idn | Feet from the | North/South line | Feet from the | East/West line | County |
|---------------|---------|----------|-------|---------|---------------|------------------|---------------|----------------|----------|
| 3 | 12 | 32-N | 7-W | | 132 | NORTH | 1624 | WEST | SAN JUAN |

¹¹ Bottom Hole Location If Different From Surface

| UL or lot no. | Section | Township | Range | Lot Idn | Feet from the | North/South line | Feet from the | East/West line | County |
|---------------|---------|----------|-------|---------|---------------|------------------|---------------|----------------|----------|
| 2 | 12 | 32-N | 7-W | | 915 | NORTH | 2250 | EAST | SAN JUAN |

| | | | |
|---|------------------------------|----------------------------------|-------------------------|
| ¹² Dedicated Acres 414.90 | ¹³ Jobit or Indit | ¹⁴ Consolidation Code | ¹⁵ Order No. |
|---|------------------------------|----------------------------------|-------------------------|

NO ALLOWABLE WILL BE ASSIGNED TO THIS COMPLETION UNTIL ALL INTERESTS HAVE BEEN CONSOLIDATED OR A NON-STANDARD UNIT HAS BEEN APPROVED BY THE DIVISION

16

17 OPERATOR CERTIFICATION

I hereby certify that the information contained herein is true and complete to the best of my knowledge and belief, and that this organization either owns a working interest or an undivided mineral interest in the land including the proposed bottom hole location or has a right to drill the well at this location pursuant to a contract with an owner of such a mineral or working interest, or to a voluntary pooling agreement or a compulsory pooling order heretofore entered by the Division.

Signature: Rhonda Rogers
Printed Name: Rhonda Rogers

18 SURVEYOR CERTIFICATION

I hereby certify that the well location shown on this plat was plotted from field notes of actual surveys made by me or under my supervision, and that the same is true and correct to the best of my belief.

DECEMBER 16, 2006
Date of Survey

Signature and Seal of Surveyor: [Signature]
Professional Land Surveyor

Certificate Number: 8894

SURFACE LOCATION
LAT: 36.9970° N. (NAD 83)
LONG: 107.5210° W. (NAD 83)
LAT: 36.59.8815° N. (NAD 27)
LONG: 107.31.2243° W. (NAD 27)
36 59 58.89
107 31 14.52

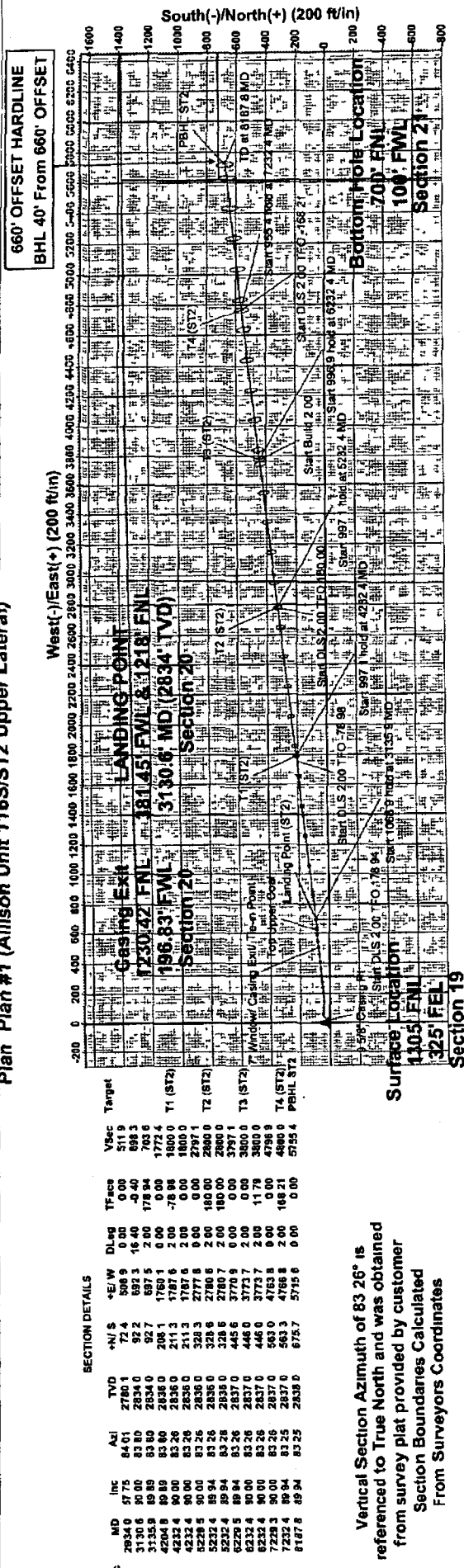
BOTTOM HOLE LOCATION
LAT: 36.99756° N. (NAD 83)
LONG: 107.51685° W. (NAD 83)
LAT: 36.59.8531° N. (NAD 27)
LONG: 107.30.9745° W. (NAD 27)
36 59 51.86
107 30 58.47

1396
1600 783

.288 miles

1520.6 ft

Project: La Plata County, CO
 Site: Sec 19, T32N, R06W - Allison Unit 116S
 Well: Allison Unit 116S
 Wellbore: ST2 Upper Lateral
 Plan: Plan #1 (Allison Unit 116S/ST2 Upper Lateral)

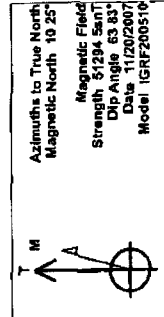
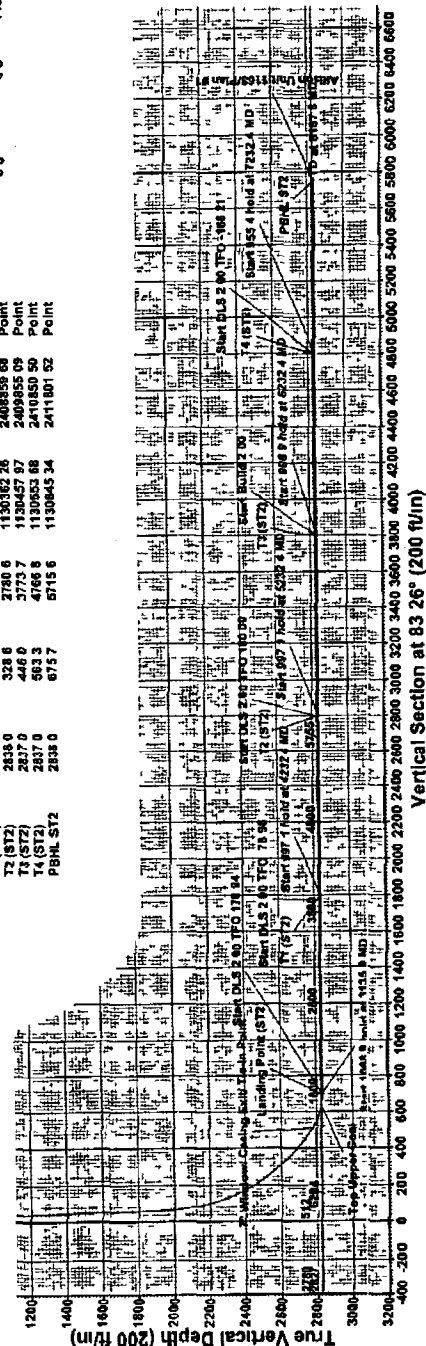


WELL DETAILS Allison Unit 116S

Ground Elevation 8414.0
 RKB Elevation Aztec 777 (RKB=15) @ 6428.0ft (Aztec 777 (RKB=15))
 Rig Name Aztec 777 (RKB=15)

WELLBORE TARGET DETAILS (MAP CO-ORDINATES)

| Name | TVD | +N/-S | +E/-W | Northing | Easting | Shape |
|---------------------|--------|-------|--------|------------|------------|-------|
| Landing Point (ST2) | 2834.0 | 92.2 | 1782.4 | 1130171.35 | 2405784.83 | Point |
| T1 (ST2) | 2836.0 | 208.1 | 1780.6 | 1130266.54 | 2407864.27 | Point |
| T2 (ST2) | 2836.0 | 328.6 | 2780.6 | 1130362.26 | 2409359.68 | Point |
| T3 (ST2) | 2837.0 | 446.0 | 3773.7 | 1130457.97 | 2409555.09 | Point |
| T4 (ST2) | 2837.0 | 563.3 | 4766.8 | 1130553.68 | 2410550.50 | Point |
| PEHL ST2 | 2838.0 | 675.7 | 5715.6 | 1130645.34 | 2411801.52 | Point |



PROJECT DETAILS La Plata County CO

| | |
|-----------------|---------------------------|
| Geodetic System | US State Plane 1983 |
| Datum | North American Datum 1983 |
| Ellipsoid | GRS 1980 |
| Zone | Colorado Southern Zone |
| System Datum | Mean Sea Level |

Plan: Plan #1 (Allison Unit 116S/ST2 Upper Lateral)
 Created By: Nephi Smith Date: 8/30/2007



Ways to Limit Water Use to Forty Gallons Per Day

Each day, we use water in many ways inside our homes. Estimates indicate that each person in the United States uses between 50 and 70 gallons of water per day. There are many water conservation measures that can be used to limit water use. Here's an example of how a family of four can limit their water use to an average of 40 gallons per person per day during a seven day period.

- ! For laundry - Most washing machines use approximately 40 gallons of water for a full load. If your washer has a permanent press cycle, the tub may fill one additional time, which would use an additional 20 gallons of water. To limit water use when doing laundry, wash only full loads and avoid using the permanent press cycle. A family of four should try to limit laundry to 4 full loads per week.

Total for week: 160 gallons

- ! For showers - Adults take one 5-minute shower per day. With a showerhead that flows at a rate of 2.5 gallons per minute, water use would be 12.5 gallons per shower. All showerheads manufactured after 1995 must flow at no more than 2.5 gallons per minute. If you have an older shower, now might be a good time to change.

Total for week: 175 gallons

- ! For baths - Children take 4 tub baths and 3 sponge baths per week. Water use for tub baths is limited to 12 gallons per bath. For sponge baths, limit water use to 1 gallon per bath.

Total for week: 102 gallons

- ! For hand washing - Each member of the family limits hand washing with water to 3 times per day. A supply of hand sanitizer or anti-bacterial wipes should be kept on hand for other times hands need to be cleaned. When washing hands, wet them, turn the faucet off, lather hands, and turn the faucet back on to rinse. Water use would be approximately ½ gallon per washing.

Total for week: 42 gallons

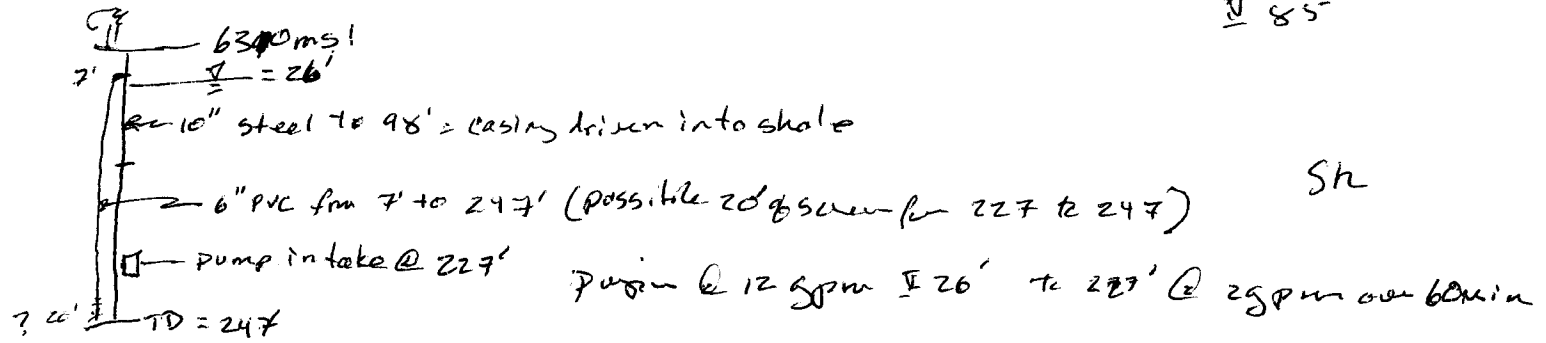
- ! For brushing teeth - Each family member brushes their teeth 2 times per day but limits water use to 1 pint per brushing. This can be achieved by wetting your brush and filling a cup with water for rinsing.

Total for week: 7 gallons

(Continued ➡)

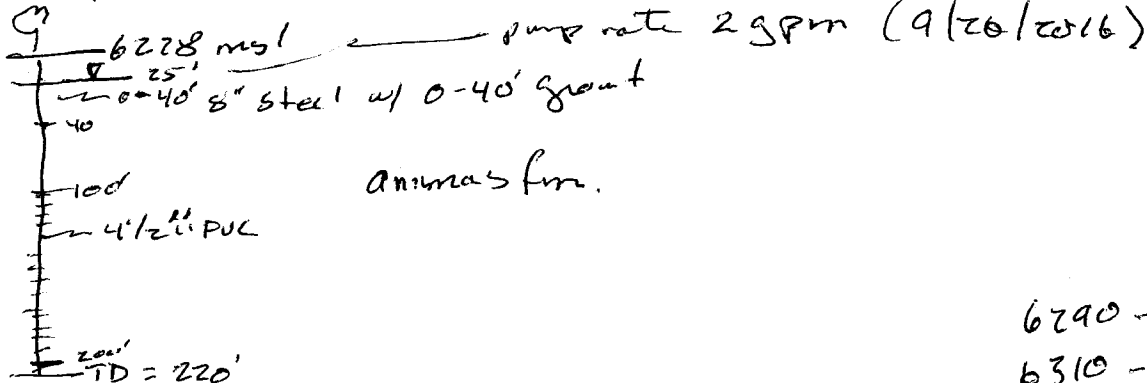
Act# 9700969 Loc Fahrion
 Permit 243484

Compression sk = 6290 ms¹
 II 85



= diff in 20' increase
 = Δ 65 to II 20' ↑ topo

Act 9703887 Bonita! Steel Lathin.
 Permit 302054



= diff 62' decrease
 = Δ 60 II 62' ↓ in topo

II
 6290 - 85 = 6205
 6310 - 26 = 6284
 6228 - 25 = 6203
 Rec. Test = 6290 - 292 = 5998

Based on Google Earth aerial
 Irrigation appears to be floodwater flood via ditches

Soil Survey 3-10% slopes Badest Ch

92840-140