



Southland Royalty Company

Chapin 32-6 #23-2 Archuleta County, CO

TD – 3,763 ft MD
TVD – 2,866 ft

12 1/4" hole to 460'.
Surface Csg: 10 jts 9 5/8" 32.3#/ft H-40 ST&C 8RD
Setting Depth: 420 ft

Cement
250sx Class G (300 ft³)
Circulated 30 bbls cement to surface.

8 3/4" hole to 3,763'.
Production Csg: 80 jts 7" 23#/ft J-55 LT&C
Setting Depth: 3,733 ft

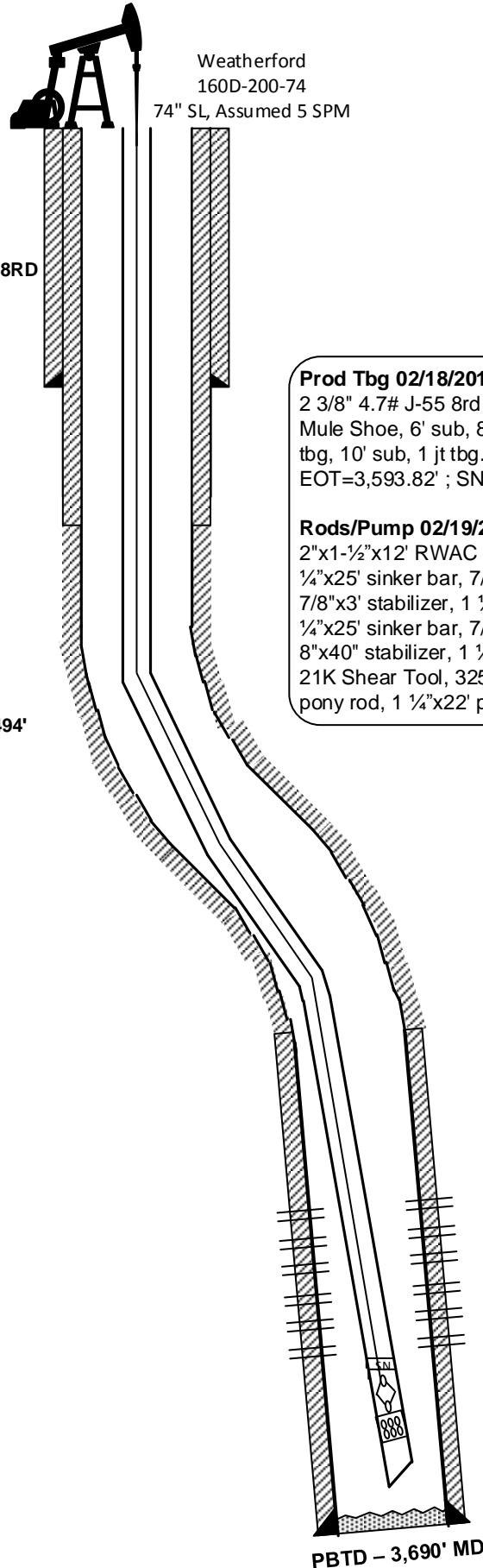
Cement:
Lead: 475sx 65/35
Tail: 140sx Class G
Total Cement: 1096 ft³
Circulated 70 bbls cement to surface.

Perfs
UPR FC: 0.43" 4spf 84 holes
3426'-3428'; 3446'-3449'; 3476'-3487'; 3489'-3494'

LWR FC: 0.42" 4spf 60 holes
3526'-3530'; 3540'-3545'; 3550'-3556'

Frac
3426'-3494'
12,500gals hybrid pre-pad
11,000gals delta 140
43,800gals delta 140 w/ sandwedge
105,000# 20/40 BASF sand

3526'-3556'
7800gals Hybrid pre-pad
8800gals Hybrid Delta 140 pad
22,634gals delta 140 w// sandwedge
68,300# 20/40 BASF sand



Prod Tbg 02/18/2016:

2 3/8" 4.7# J-55 8rd EUE tbg
Mule Shoe, 6' sub, 8' perf sub, SN, 42 jts YB tbg, 67 jts NEW
tbg, 10' sub, 1 jt tbg. Cap String.
EOT=3,593.82' ; SN=3,579.52'

Rods/Pump 02/19/2016:

2"x1-1/2"x12' RWAC w/ 60 ring plunger, 7/8"x3' stabilizer, 1
1/4"x25' sinker bar, 7/8"x3' stabilizer, 1 1/4"x25' sinker bar,
7/8"x3' stabilizer, 1 1/4"x25' sinker bar, 7/8"x40" stabilizer, 1
1/4"x25' sinker bar, 7/8"x40" stabilizer, 1 1/4"x25' sinker bar, 7/
8"x40" stabilizer, 1 1/4"x25' sinker bar. 7/8"x40" stabilizer,
21K Shear Tool, 3253' of 13/16 Co-Rod, 7 7/8 rods, 2'x7/8"
pony rod, 1 1/4"x22' polish rod w/ 1 1/2"x10' liner.

Prepared by: Graham

Date: 08/23/2017

KB = 12 ft

GL = 6,118 ft

API# 05-007-06259

Spud Date: 08/24/2008

Well First Delivered: 02/09/2009

PBTD – 3,690' MD