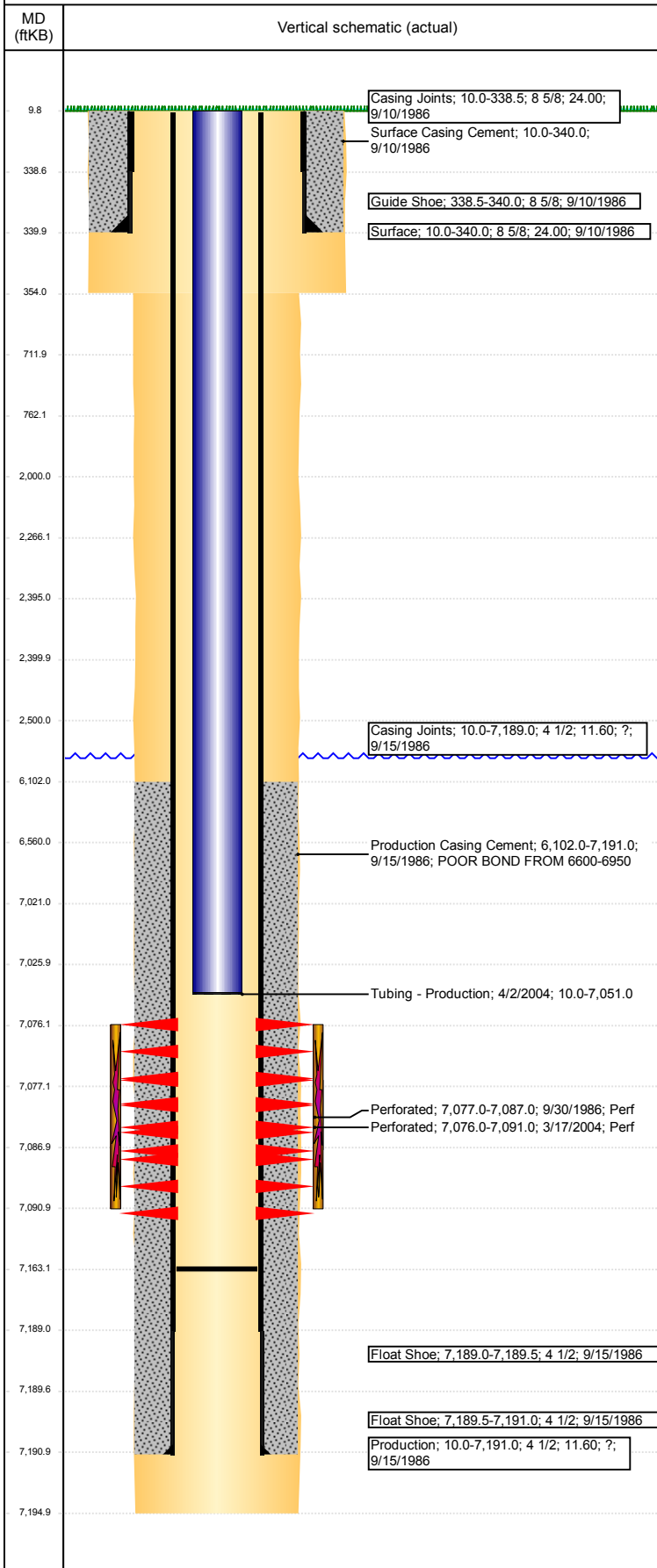


Well Name: COWHERD 01

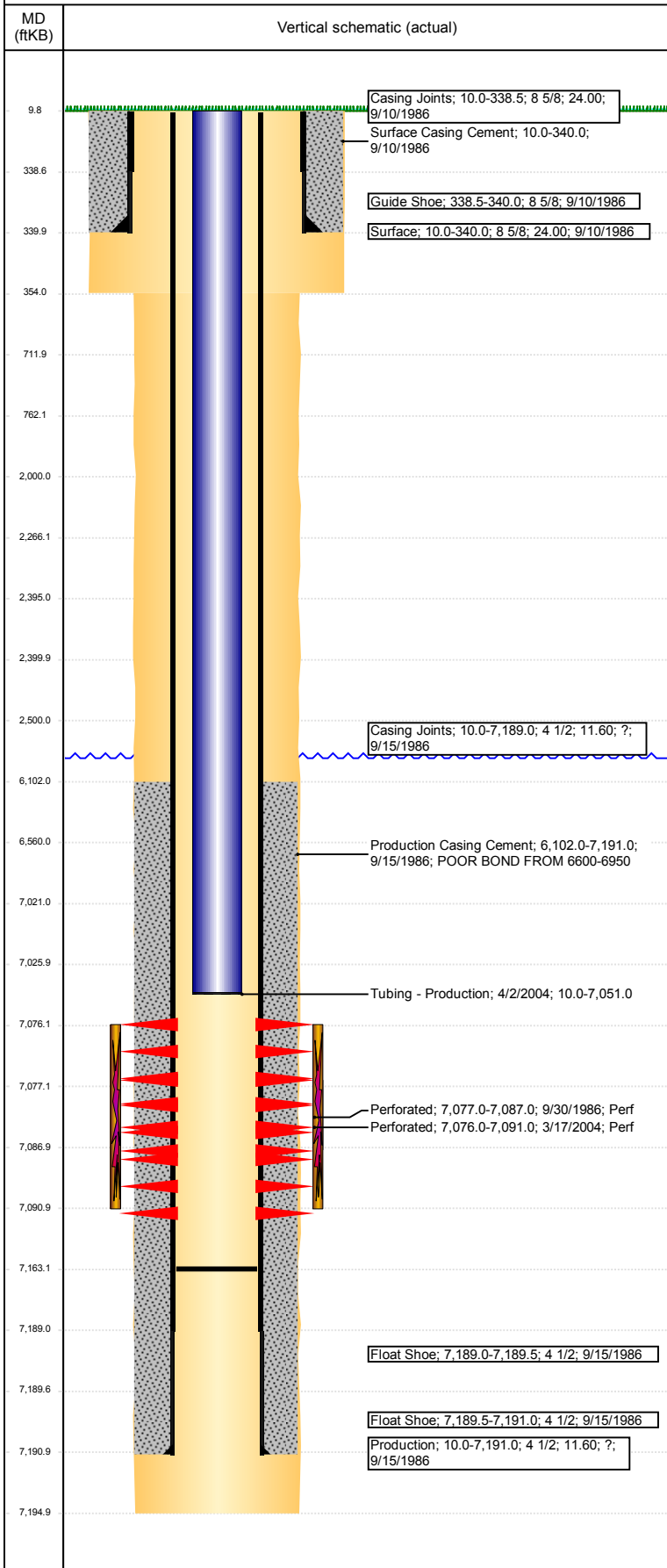
VERTICAL - ORIGINAL HOLE, 2/17/2018 11:00:02 AM



Well Header						
API 05-123-13137		Well Report Center 422128729		Well Configuration Type VERTICAL		
Original KB Elevation (ft) 4,708		KB - GL / MSL (ftKB) 10.00		Spud Date 9/10/1986		P & A Date
Production Route A2-04			Well Production Status PR			SoRT Ignore No
Directions To Well				Actual Latitude (°) 40.45217245		Actual Longitude (°) -104.67070400
Comment NO PERF AND FRAC DETAIL FOR NEW DRILL IN WELL FILE TD DISCREPANCY: NEW DRL RPTS & ST COMP RPT = 7191, REFRAC RPTS & OPEN HOLE LOG = 7195 - PROD CSG SET DEPTH DISCREPANCY: DRL RPTS = 7191, ST COMP RPT = 7200.						
Congressional Location						
Quarter 3 SE	Quarter 4 SW	Section 28	Township 6	Twnsbp N/S Dir N	Range 65	Range E/W Dir W
Rig Operator						
Rig Operator						
Plug Back Total Depths						
Date	Depth (ftKB)	Method		Com		
4/2/2004	7,163.0	TAG		CLEAN OUT & LAND TBG		
Wellbore Sections						
Section Des		Size (in)		Act Top, MD (ftKB)		Act Btm, MD (ftKB)
SURFACE		12 1/4		10		354
PRODUCTION		7 7/8		354		7,195
Zone Statuses						
Zone Name		Status Date			Status	
CODELL		3/30/2004			PR	
Casing Strings						
Surface, 340.0ftKB						
Casing Description	Run Date	OD (in)	Wt/Len (l...	Grade	Top, MD (ft...	MD (ftKB)
Surface	9/10/1986	8 5/8	24.00		10.0	340.0
Production, 7,191.0ftKB						
Casing Description	Run Date	OD (in)	Wt/Len (l...	Grade	Top, MD (ft...	MD (ftKB)
Production	9/15/1986	4 1/2	11.60	?	10.0	7,191.0
Cement						
Des		Start Date		Top (ftKB)		Btm (ftKB)
Surface Casing Cement		9/10/1986		10.0		340.0
Production Casing Cement		9/15/1986		6,102.0		7,191.0
Proposed Cement						
Des				Top (ftKB)		Btm (ftKB)
Cement Plug				6,560.0		7,021.0
Cement Squeeze				2,000.0		2,500.0
Balance Plug				2,400.0		2,500.0
Cement Plug				2,266.0		2,395.0
Shoe Plug				712.0		762.0
Shoe Plug				10.0		712.0
Tubing Strings						
Tubing Description	Run Date	String...	ID (in)	Wt (lb/ft)	Grade	Len (ft)
Tubing - Production	4/2/2004	2 3/8	2.00	4.70	J-55	7,041.00
Set De...						
Tubing Components						
Item Des	OD (in)	Wt (lb/ft)	Grade	Jts	Len (ft)	Btm (ftKB)
Tubing	2 3/8	4.70	J-55	223	7,039.35	7,049.4
Pump Seating	2 3/8	1.10			1.00	7,050.4
Nipple						
Notched collar	2 3/8			1	0.65	7,051.0
Other In Hole						
Run Date	Des			OD (in)	Top (ftKB)	Btm (ftKB)
Proposed Other In Hole						
Des			OD (in)		Top (ftKB)	Btm (ftKB)
Cement Retainer			4		2,395.0	2,400.0
Cast Iron Bridge Plug			4		7,021.0	7,026.0

Well Name: COWHERD 01

VERTICAL - ORIGINAL HOLE, 2/17/2018 11:00:03 AM



Logs			
Date	Type	Top, MD (ftKB)	Btm, MD (ftKB)
9/15/1986	FDC/CN/GR	3,550.0	7,192.0
9/15/1986	INDUCTION	341.0	7,189.0
9/29/1986	CEMENT BOND	5,883.0	7,133.0

Perforation Data				
Linked Zone	Sum of Entered Shot Total	Top (ftKB)	Btm (ftKB)	Date
CODELL, ORIGINAL HOLE	60	7,076.00	7,091.00	3/17/2004
CODELL, ORIGINAL HOLE	30	7,077.00	7,087.00	9/30/1986
Total (Sum)	90			

Proposed Perforations				
Linked Zone	Sum of En...	Top Depth (ftKB)	Btm (ftKB)	Date
	0	2,500.00	2,500.00	2/6/2018
Total (Sum)	0			

Job Supply Amounts					
Supply Item Des	Type	Uni...	Job Category	Total...	Total...