

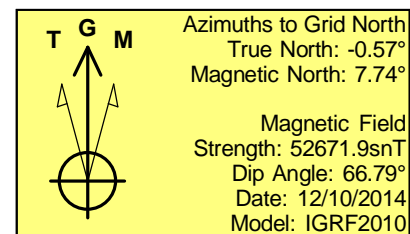
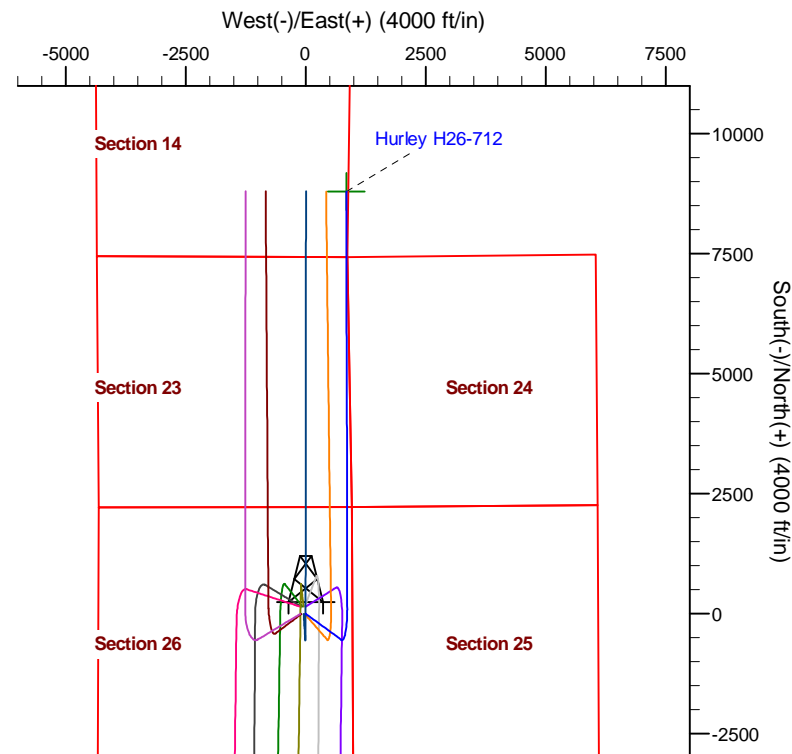
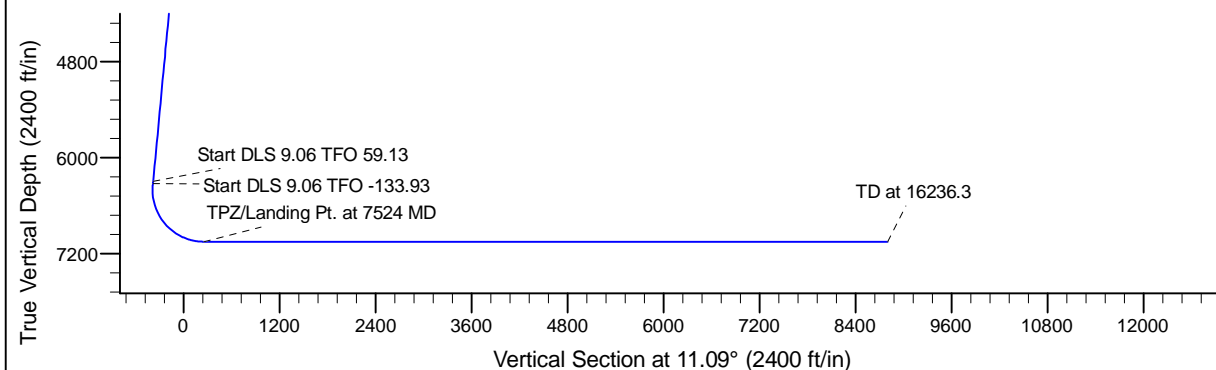
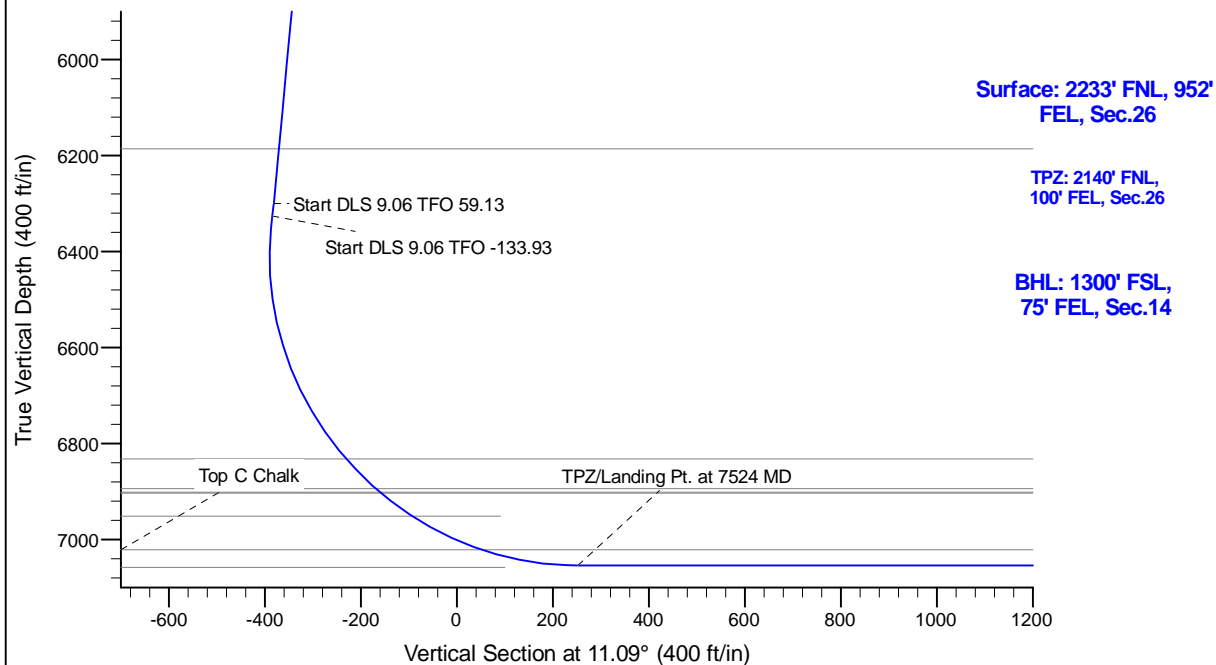
Project: Conceptual Wells  
 Site: DP 408  
 Well: Hurley H26-712  
 Wellbore: Wellbore #1  
 Design: Design #1

# Northern Region Drilling - DJ Basin

Geodetic System: US State Plane 1983  
 Datum: North American Datum 1983  
 Ellipsoid: GRS 1980  
 Zone: Colorado Northern Zone  
 System Datum: Mean Sea Level

## SECTION DETAILS

Sec	MD	Inc	Azi	TVD	+N/-S	+E/-W	Dleg	TFace	Vsect	Target
1	0.0	0.00	0.00	0.0	0.0	0.0	0.00	0.00	0.0	
2	1900.0	0.00	0.00	1900.0	0.0	0.0	0.00	0.00	0.0	
3	2525.0	12.50	126.00	2520.1	-39.9	54.9	2.00	126.00	-28.6	
4	6396.7	12.50	126.00	6300.0	-532.5	732.9	0.00	0.00	-381.5	
5	6423.4	13.89	134.66	6325.9	-536.4	737.5	9.06	59.13	-384.5	
6	7524.0	90.00	359.88	7054.0	87.0	864.0	9.06	-133.93	251.6	
7	16236.3	90.00	359.88	7054.0	8799.4	845.9	0.00	0.00	8797.7	Hurley H26-712 BHL



## WELL DETAILS: Hurley H26-712

	Ground Level:	4854.0	
Northing	Easting	Latitude	Longitude
0.00.0	1315962.34	3244532.60	40.197400

Plan: Design #1 (Hurley H26-712/Wellbore #1)

Created By: Chad Stich

Date: 10:59, November 01 2017

**OK to submit with 2A as per Noble Drilling**

**11/1/2017**