



Lat40 , Inc. 6250 W. 10th Street, Unit 2, Greeley, CO 970-515-5294

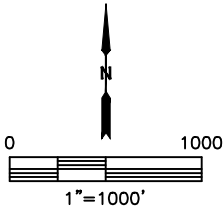
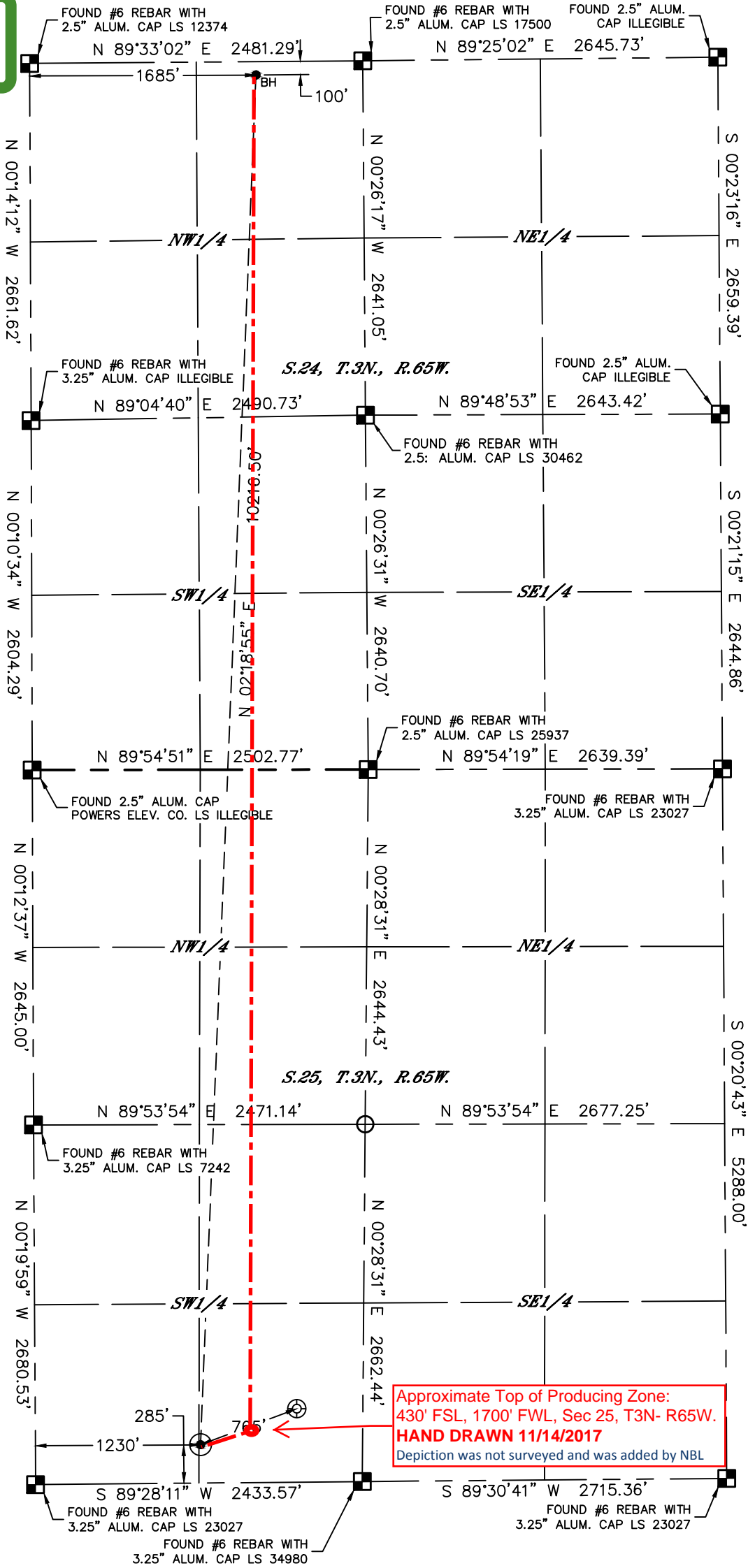
WELL LOCATION CERTIFICATE

EMMY STATE H25-764

SECTION: 25  
TOWNSHIP: 3N  
RANGE: 65W  
6TH. P.M.  
WELD COUNTY, CO

APPROVED

By hilarymckenna at 4:02 pm, 11/15/17



CLIENT: NOBLE ENERGY, INC.					LANDMAN: TYLER BEAVERS				
INSTRUMENT OPERATOR: SCOTT SHERARD					SURVEY DATE: 4/3/2017		SURFACE USE: RANGELAND		
SHL FOOTAGE		SHL LAT°	SHL LONG°	SHL PDOP	SHL ELEV (FT.)	SHL 1/4/1/4	SHL S-T-R		
285	FSL 1230 FWL	40.18967	-104.61683	2.2	4816	SESW	25-3-65		

BHL FOOTAGE		BHL LAT°	BHL LONG°	BHL S-T-R
100	FNL 1685 FWL	40.21768	-104.61499	24-3-65

- LEGEND
- ALIQUOT MONUMENT AS DESCRIBED
  - CALCULATED POSITION
  - SURFACE HOLE LOCATION (SHL)
  - ENTRY POINT LOCATION (EP)
  - BOTTOM HOLE LOCATION (BHL)
  - EXISTING WELL
  - ABANDONED WELL

NOTE:

- Bearings shown are Grid Bearings of the Colorado State Plane Coordinate System, North Zone, North American Datum 1983. The lineal dimensions as contained herein are based upon the "U.S. Survey Foot."
- Distances to section lines measured at 90 degrees from said section lines.
- Ground elevations are based on an observed GPS elevation (NAVD 1988 DATUM).
- Latitude and Longitude shown are (NAD 83 DATUM).
- IMPROVEMENTS: See LOCATION DRAWING for all visible improvements within 500' of oil and gas location.
- This map does not represent a boundary survey.



Kyle E. Rutz—On behalf of Lat40, Inc.  
Colorado Licensed Professional Land Surveyor No. 38307  
DATE: 9/1/2017  
PROJECT#: 2017022