

Caerus Oil & Gas LLC

NPR G09 596 PAD  
SE 1/4 NW 1/4, SECTION 9, T5S, R96W, 6th P.M.  
GARFIELD COUNTY, COLORADO



UELS, LLC  
Corporate Office \* 85 South 200 East  
Vernal, UT 84078 \* (435) 789-1017

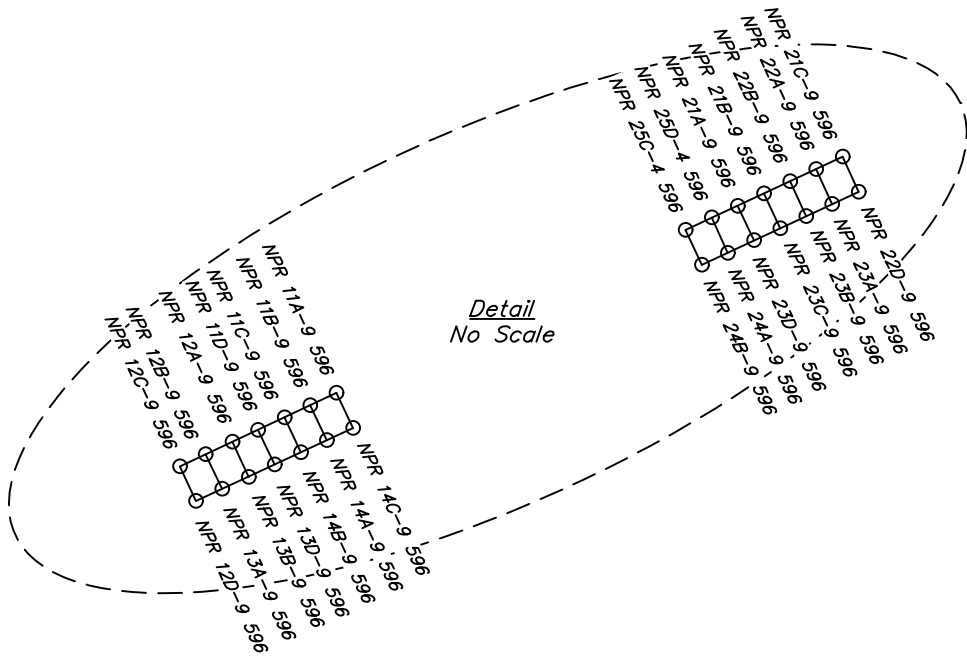
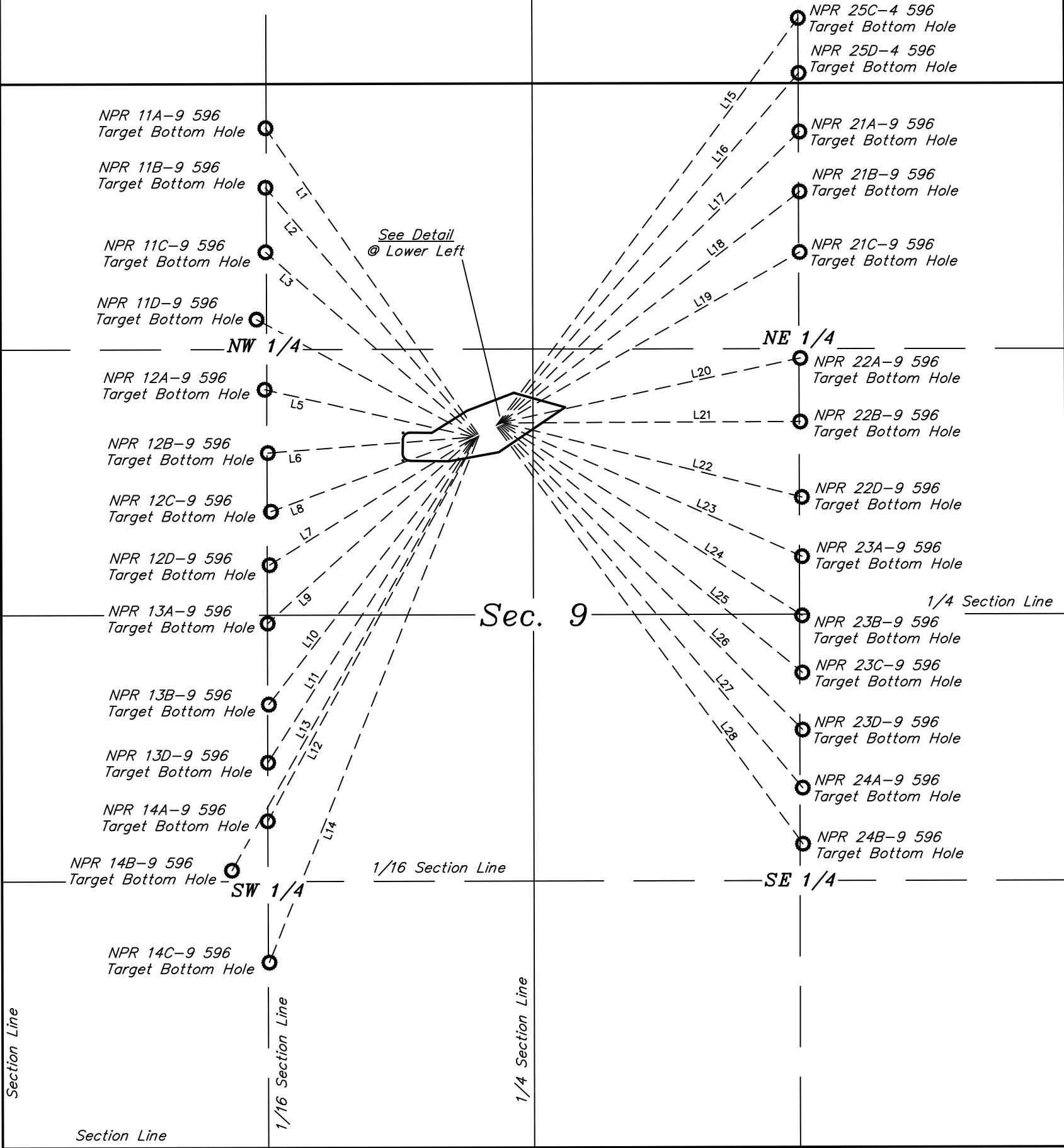
SURVEYED BY	BART HUNTING, J.F.	12-18-17	SCALE
DRAWN BY	M.D.	12-20-17	1" = 60'
TARGET BOTTOM HOLE DRAWING			FIGURE #6



SW 1/4

Sec. 4

SE 1/4



LINE TABLE		
LINE	DIRECTION	LENGTH
L1	N34°49'00"W	1847.20'
L2	N40°33'06"W	1611.76'
L3	N48°54'25"W	1380.89'
L4	N61°51'13"W	1223.17'
L5	N77°18'24"W	1056.89'
L6	S85°32'20"W	1011.40'
L7	S58°02'40"W	1175.31'
L8	S69°38'04"W	1051.97'
L9	S47°55'16"W	1365.51'
L10	S37°32'36"W	1664.93'
L11	S32°27'48"W	1910.35'
L12	S28°35'40"W	2173.42'
L13	S29°23'20"W	2467.59'
L14	S21°41'02"W	2810.97'

LINE TABLE		
LINE	DIRECTION	LENGTH
L15	N36°30'21"E	2515.52'
L16	N40°31'42"E	2297.52'
L17	N45°44'31"E	2080.54'
L18	N52°11'17"E	1878.34'
L19	N60°06'00"E	1688.83'
L20	N77°45'51"E	1508.50'
L21	N89°42'01"E	1481.15'
L22	S76°06'15"E	1515.48'
L23	S66°06'35"E	1617.28'
L24	S57°33'07"E	1761.21'
L25	S50°39'04"E	1932.04'
L26	S44°56'26"E	2126.27'
L27	S40°08'42"E	2341.59'
L28	S36°18'44"E	2562.73'

REV: 2 01-10-18 M.D. (SHL & BHL MOVE)

Caerus Oil & Gas LLC

NPR G09 596 PAD  
SE 1/4 NW 1/4, SECTION 9, T5S, R96W, 6th P.M.  
GARFIELD COUNTY, COLORADO

SURVEYED BY	BART HUNTING, J.F.	12-18-17	SCALE
DRAWN BY	M.D.	12-20-17	1" = 600'
MULTI-Well PLAN		FIGURE #7	



UELS, LLC  
Corporate Office \* 85 South 200 East  
Vernal, UT 84078 \* (435) 789-1017