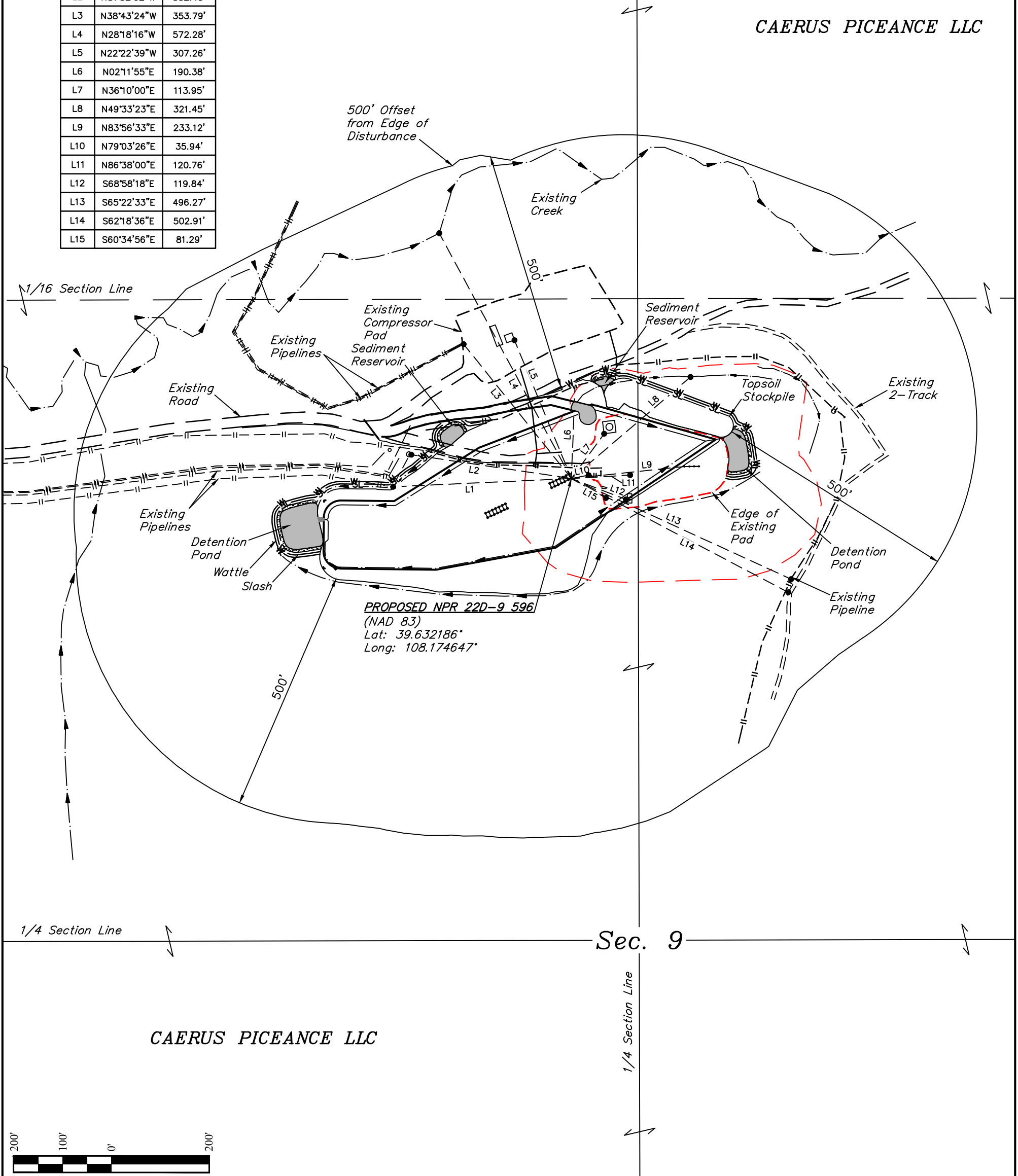


LINE TABLE		
LINE	DIRECTION	LENGTH
L1	S87°20'48"W	366.58'
L2	N81°32'02"W	332.43'
L3	N38°43'24"W	353.79'
L4	N28°18'16"W	572.28'
L5	N22°22'39"W	307.26'
L6	N02°11'55"E	190.38'
L7	N36°10'00"E	113.95'
L8	N49°33'23"E	321.45'
L9	N83°56'33"E	233.12'
L10	N79°03'26"E	35.94'
L11	N86°38'00"E	120.76'
L12	S68°58'18"E	119.84'
L13	S65°22'33"E	496.27'
L14	S62°18'36"E	502.91'
L15	S60°34'56"E	81.29'



CAERUS PICEANCE LLC

Sec. 9

CAERUS PICEANCE LLC

Caerus Oil & Gas LLC

NPR G09 596 PAD  
SE 1/4 NW 1/4, SECTION 9, T5S, R96W, 6th P.M.  
GARFIELD COUNTY, COLORADO

SURVEYED BY	BART HUNTING, J.F.	12-18-17	SCALE
DRAWN BY	M.D.	12-20-17	1" = 200'
LOCATION DRAWING		FIGURE #5	



UELS, LLC  
Corporate Office \* 85 South 200 East  
Vernal, UT 84078 \* (435) 789-1017