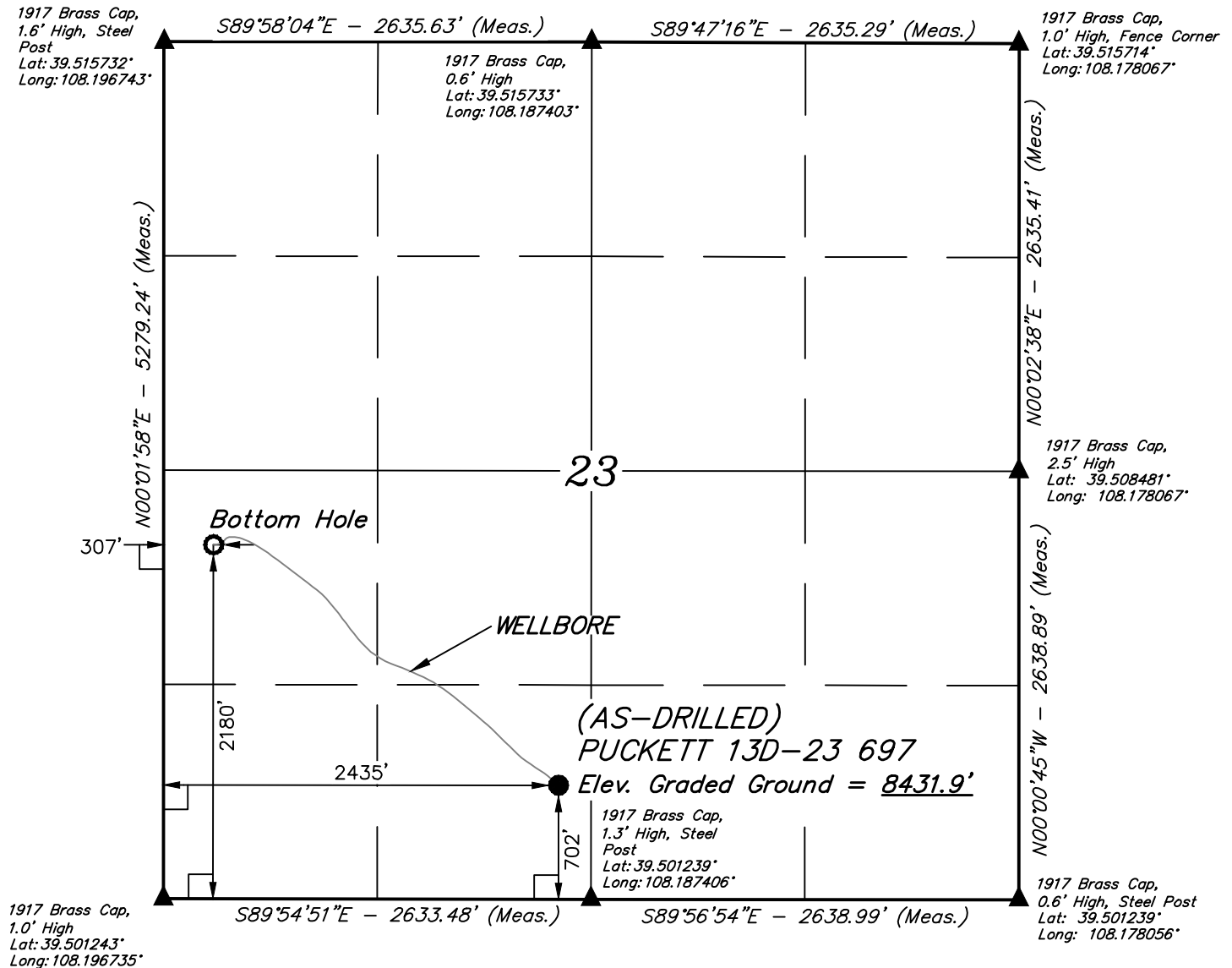


*T6S, R97W, 6th P.M.*

- NOTE:**  
WELLBORE DATA PROVIDED BY  
Caerus Oil & Gas LLC.



A horizontal graphic scale bar with alternating black and white segments. Above the bar, the markings '1000'', '500'', '0'', '500'', and '1000'' are displayed from left to right, indicating distances in feet.

<b>NAD 83 (SURFACE LOCATION)</b>	<b>NAD 83 (BOTTOM HOLE)</b>
<b>LATITUDE</b> = 39°30'11.40" (39.503167)	<b>LATITUDE</b> = 39°30'26.01" (39.507225)
<b>LONGITUDE</b> = 108°11'17.19" (108.188108)	<b>LONGITUDE</b> = 108°11'44.35" (108.195653)
<b>NAD 27 (SURFACE LOCATION)</b>	<b>NAD 27 (BOTTOM HOLE)</b>
<b>LATITUDE</b> = 39°30'11.48" (39.503189)	<b>LATITUDE</b> = 39°30'26.09" (39.507247)
<b>LONGITUDE</b> = 108°11'14.90" (108.187472)	<b>LONGITUDE</b> = 108°11'42.05" (108.195014)
<b>UTM NAD 27 (ZONE 12)</b>	<b>UTM NAD 27 (ZONE 12)</b>
N: 14357539.09 E: 2433828.19	N: 14358951.07 E: 2431654.16

THIS IS TO CERTIFY THAT THE ABOVE DATA WAS PREPARED AND LOCATION AS SHOWN WAS STAKED ON THE GROUND FROM FIELD NOTES OF ACTUAL SURVEYS MADE BY ME OR UNDER MY SUPERVISION AND THAT THE SAME ARE TRUE AND CORRECT TO THE BEST OF MY KNOWLEDGE AND BELIEF.

REGISTERED LAND SURVEYOR  
REGISTRATION NO. 38126  
STATE OF COLORADO  
2013-18

## BASIS OF BEARINGS

### BASIS OF ELEVATION

SPOT ELEVATION AT THE NORTHWEST CORNER OF SECTION 30, T5S, R95W, 6th P.M. TAKEN FROM THE FORKED GULCH QUADRANGLE, COLORADO, GARFIELD COUNTY, 7.5 MINUTE SERIES (TOPOGRAPHICAL MAP) PUBLISHED BY THE UNITED STATES DEPARTMENT OF THE INTERIOR, GEOLOGICAL SURVEY. SAID ELEVATION IS MARKED AS BEING 5966 FEET.

**UELS, LLC**

**Corporate Office \* 85 South 200 East  
Vernal, UT 84078 \* (435) 789-1017**

**Caerus Oil & Gas LLC**

**(AS-DRILLED) PUCKETT 13D-23 697**  
**SE 1/4 SW 1/4, SECTION 23, T6S, R97W, 6th P.M.**  
**GARFIELD COUNTY, COLORADO**

<b>SURVEYED BY</b>	BART HUNTING	02-07-18	<b>SCALE</b>
<b>DRAWN BY</b>	C.D.L.	02-08-18	1" = 1000'

## AS-DRILLED WELL LOCATION PLAT

